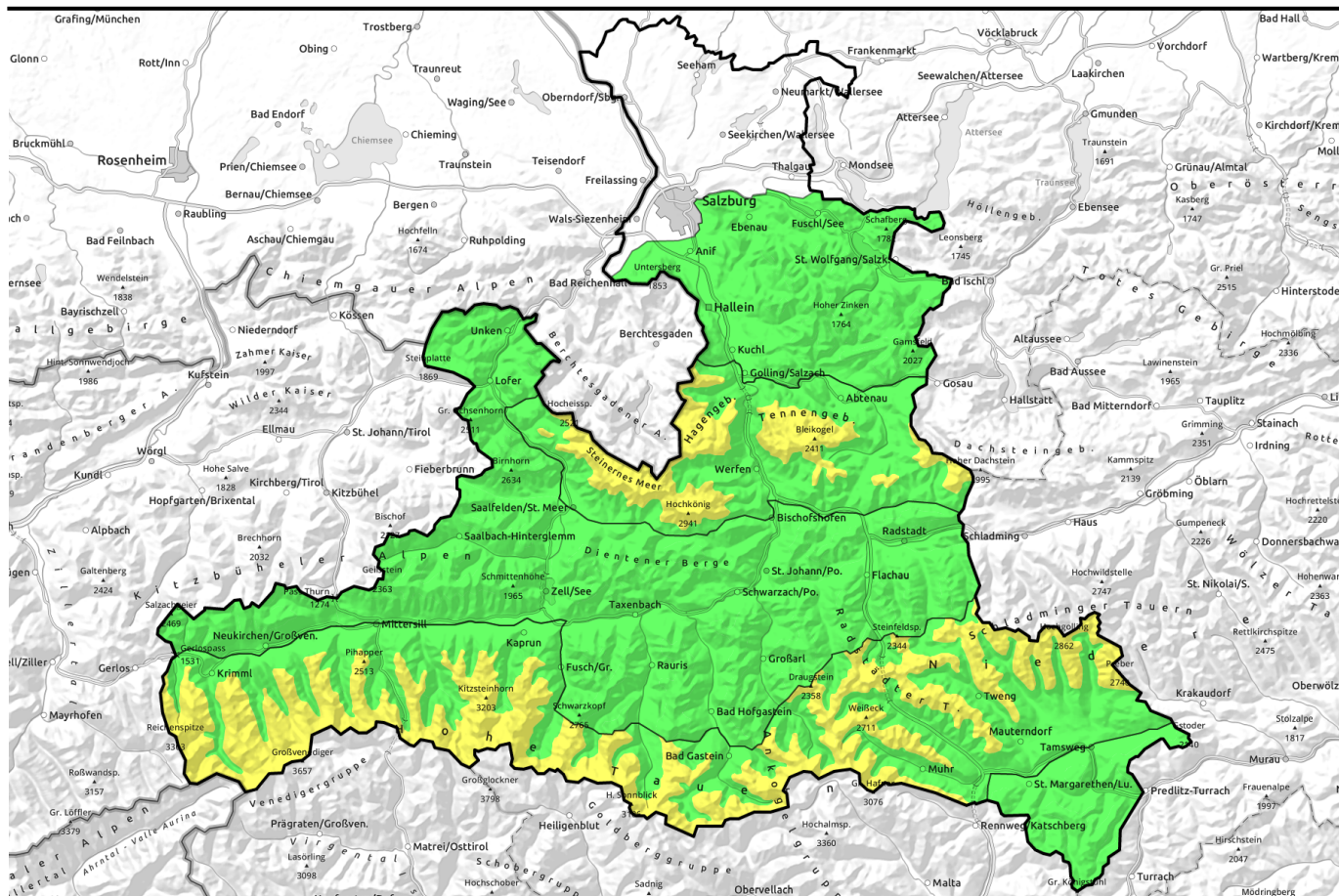


02.01.2022



Isolated glide-snow avalanches, persistent weak layer above 2200 m



Osterhorngruppe, Gamsfeldgruppe, Untersbergstock, Chiemgauer Alpen, Heutal, Reiteralpe, Loferer und Leoganger Steinberge, Kitzbüheler Alpen, Glemmtal, Oberpinzgauer Grasberge, Dientner Grasberge, Pongauer Grasberge, Niedere Tauern Nord, Goldberggruppe Nord

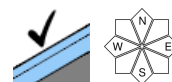


2200 m

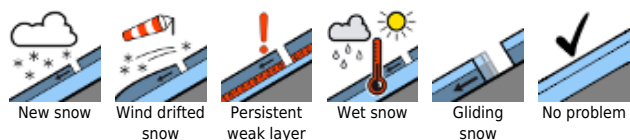
Steinernes Meer, Hochkönig, Hagengebirge, Göllstock, Tennengebirge, Gosaukamm, Glocknergruppe Nord, Großvenedigergruppe Nord, Großvenedigergruppe Alpenhauptkamm, Glocknergruppe Alpenhauptkamm, Goldberggruppe Alpenhauptkamm, Ankogelgruppe, Muhr, Niedere Tauern Alpenhauptkamm, Niedere Tauern Süd



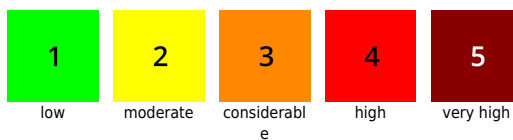
Nockberge



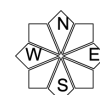
Avalanche problems



Danger ratings



Expositions

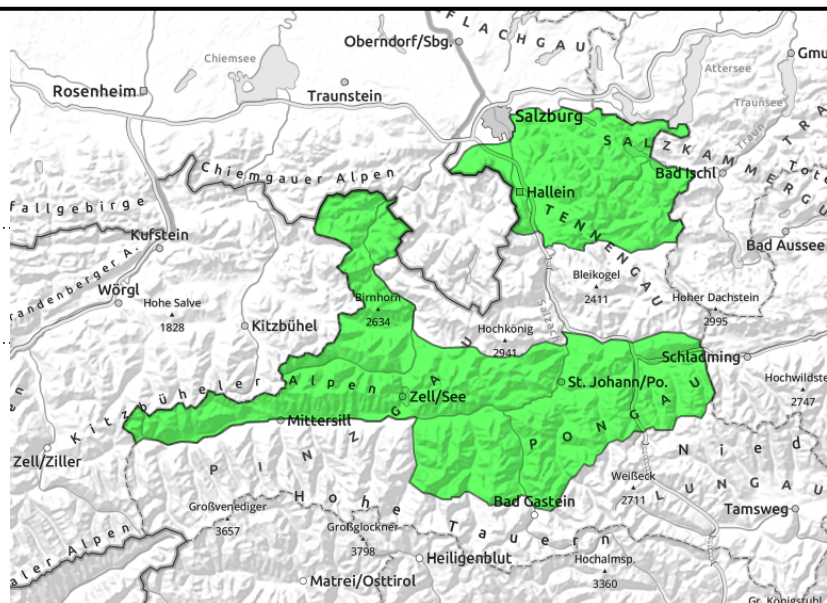


02.01.2022

Osterhorngruppe, Gamsfeldgruppe, Untersbergstock, Chiemgauer Alpen, Heutal, Reiteralpe, Loferer und Leoganger Steinberge, Kitzbüheler Alpen, Glemmtal, Oberpinzgauer Grasberge, Dientner Grasberge, Pongauer Grasberge, Niedere Tauern Nord, Goldberggruppe Nord



only very isolated, extremely steep grassy slopes



Hardly any danger zones

Avalanche danger is LOW. Hardly any danger zones. Isolated small glide-snow avalanches or superficial wet slides are sporadically possible.

Snowpack structure

Compact snowpack with melt-freeze crust, also breakable, which can soften on sunny slopes by midday

Weather

On **Sunday**, initially sunny, some high-altitude cirrus clouds, densifying as of midday, light conditions becoming more diffuse. Winds will slacken off noticeably, blow only at light to moderate strength. At 2000 m: from +9 cooling to +5 degrees, at 3000 m from +2 to -1 degree.

On **Monday**, strong-to-stormy westerly winds. Visibility mostly adequate. Precipitation will be minor, sporadic. At 2000 m: -2 degrees; at 3000 m: -8 degrees.

Outlook

No significant change on Monday.

Avalanche problems



Danger ratings

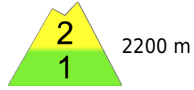
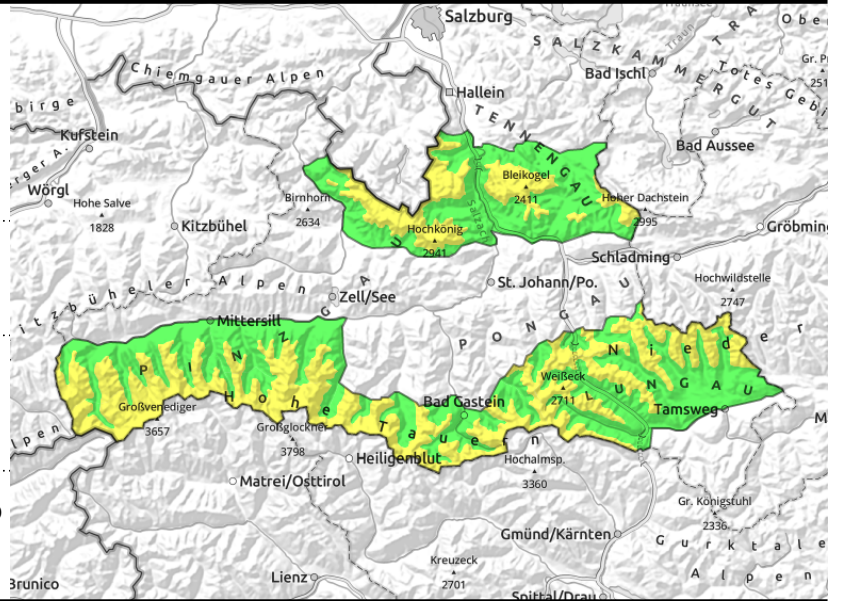


Expositions



02.01.2022

Steinernes Meer, Hochkönig, Hagengebirge, Göllstock, Tennengebirge, Gosaukamm, Glocknergruppe Nord, Großvenedigergruppe Nord, Großvenedigergruppe Alpenhauptkamm, Glocknergruppe Alpenhauptkamm, Goldberggruppe Alpenhauptkamm, Ankogelgruppe, Muhr, Niedere Tauern Alpenhauptkamm, Niedere Tauern Süd



2200 m



distant from ridgelines, transitions from shallow to deep snow



few danger zones in very steep grassy terrain

Danger zones for slab avalanches above 2200 m

Avalanche danger above 2200 m is generally MODERATE, below that altitude danger is LOW. Below 2200 m potential dangers of highly isolated glide-snow avalanches on extremely steep slopes. Mostly small-to-medium sized. Above 2200 m, dry-snow slab avalanches can be triggered by large additional loading. Caution in transitions from shallow to deep snow. Potential slabs can grow to dangerously large size. Treacherous: N/E/S aspects. Danger zones are often evident in areas distant from ridgelines. The snowpack surface remains mostly hardened in zones not directly exposed to sunlight. Danger of falling.

Snowpack structure

Up to 2200/2400 m the snow is moist and has a melt-freeze crust which is capable of bearing loads. On purely sunny slopes this crust softens somewhat, in the other aspects it remains hard. Above 2200/2400 m the terrain is utterly windblown. Potential fracture layer (faceted, soft) is located beneath the last melt-freeze crust from mid-December. Elsewhere the old snowpack is compact, not prone to triggering.

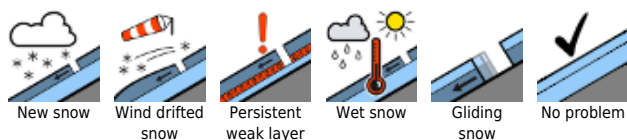
Weather

On **Sunday**, initially sunny, some high-altitude cirrus clouds, densifying as of midday, light conditions becoming more diffuse. Winds will slacken off noticeably, blow only at light to moderate strength. At 2000 m: from +9 cooling to +5 degrees, at 3000 m from +2 to -1 degree. On **Monday**, strong-to-stormy westerly winds. Visibility mostly adequate. Precipitation will be minor, sporadic. At 2000 m: -2 degrees; at 3000 m: -8 degrees.

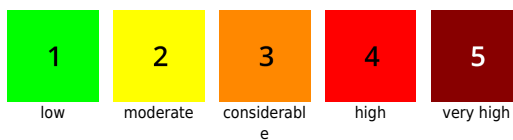
Outlook

No significant change on Monday.

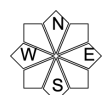
Avalanche problems



Danger ratings



Expositions

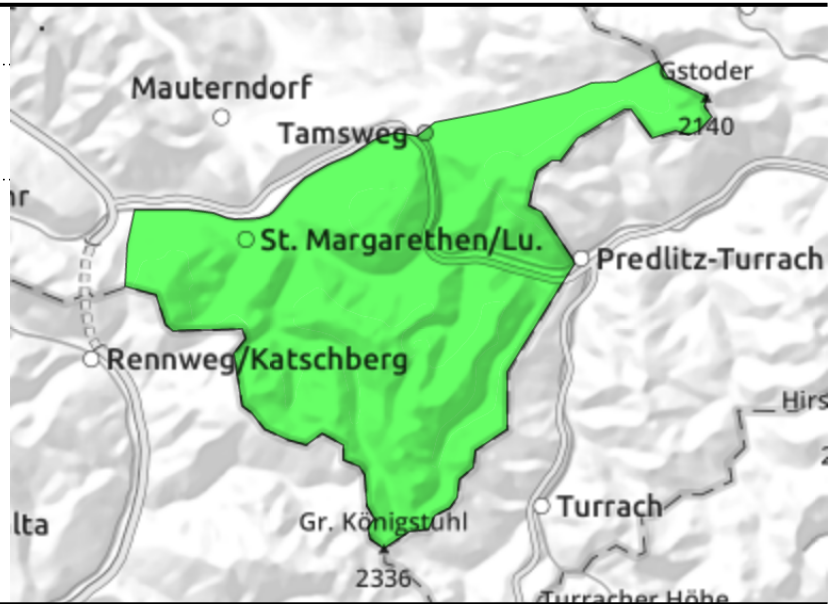


02.01.2022

Nockberge



very few danger zones



favorable conditions, hardly any avalanche prone locations

Avalanche danger is LOW. There are hardly any danger zones. Isolated small-sized glide-snow avalanches or superficial wet slides are possible.

Snowpack structure

Compact snowpack with melt-freeze crust, also breakable, which can soften on sunny slopes by midday

Weather

On **Sunday**, initially sunny, some high-altitude cirrus clouds, densifying as of midday, light conditions becoming more diffuse. Winds will slacken off noticeably, blow only at light to moderate strength. At 2000 m: +8.

On **Monday**, strong-to-stormy westerly winds. Visibility mostly adequate. Precipitation will be minor, sporadic. At 2000 m: +2 to -1 degree.

Outlook

No significant change on Monday.

Translated by Jeffrey McCabe, www.creativtrans.com

Avalanche problems



Danger ratings



Expositions

