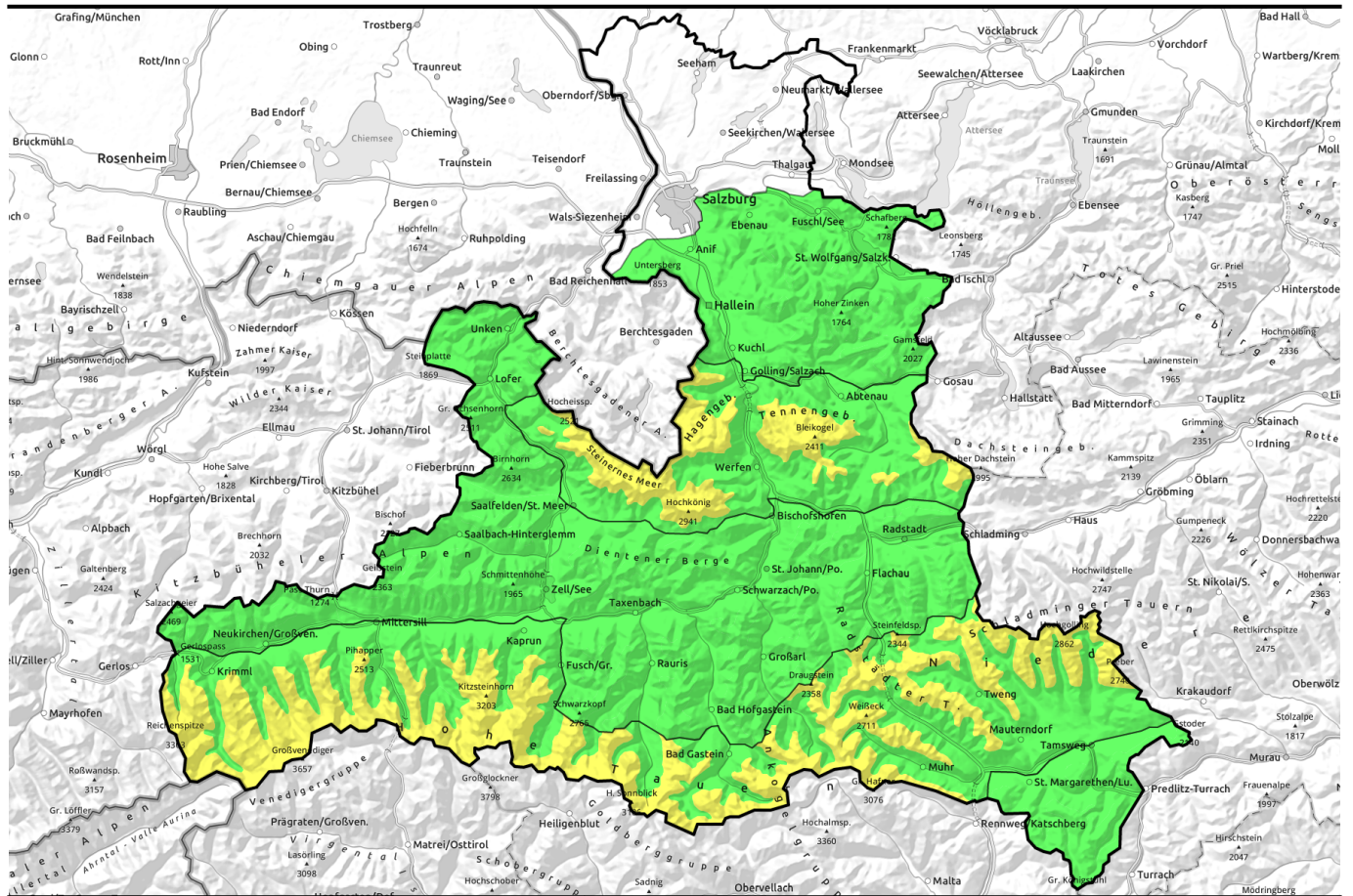


01.01.2022



Caution above 2200 m

	<p>Osterhorngruppe, Gamsfeldgruppe, Untersbergstock, Chiemgauer Alpen, Heutal, Reiteralpe, Loferer und Leoganger Steinberge, Kitzbüheler Alpen, Glemmtal, Oberpinzgauer Grasberge, Dientner Grasberge, Pongauer Grasberge, Niedere Tauern Nord, Goldberggruppe Nord</p>	
	<p>2200 m Steinernes Meer, Hochkönig, Hagengebirge, Göllstock, Tennengebirge, Gosaukamm, Glocknergruppe Nord, Großvenedigergruppe Nord, Großvenedigergruppe Alpenhauptkamm, Glocknergruppe Alpenhauptkamm, Goldberggruppe Alpenhauptkamm, Ankogelgruppe, Muhr, Niedere Tauern Alpenhauptkamm, Niedere Tauern Süd</p>	
	<p>Nockberge</p>	

Avalanche problems



Danger ratings



Expositions

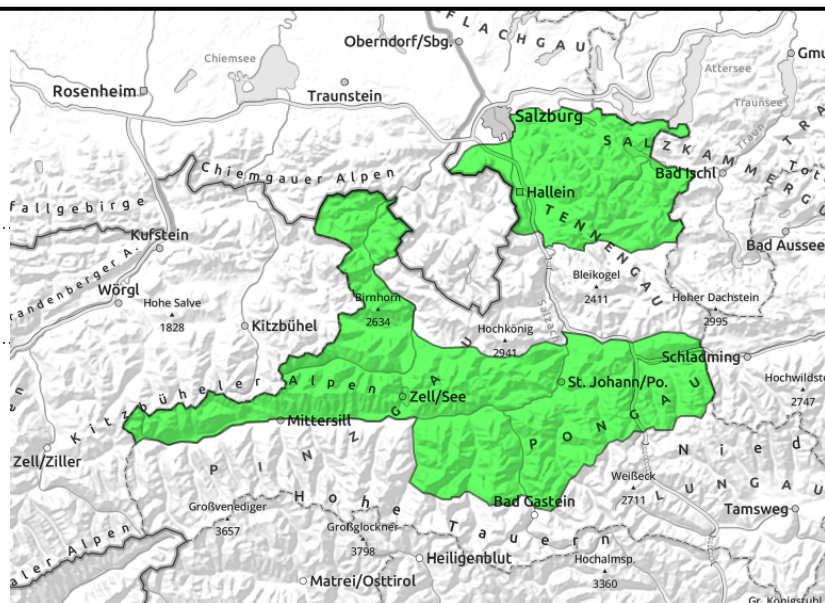


01.01.2022

Osterhorngruppe, Gamsfeldgruppe, Untersbergstock, Chiemgauer Alpen, Heutal, Reiteralpe, Loferer und Leoganger Steinberge, Kitzbüheler Alpen, Glemmtal, Oberpinzgauer Grasberge, Dientner Grasberge, Pongauer Grasberge, Niedere Tauern Nord, Goldberggruppe Nord



only very isolated, extremely steep grassy slopes



Hardly any danger zones

Avalanche danger is LOW. Hardly any danger zones. Isolated small glide-snow avalanches or superficial wet slides are sporadically possible.

Snowpack structure

Compact snowpack with melt-freeze crust, also breakable, which can soften on sunny slopes by midday

Weather

On **Saturday**, sunny, clear skies. Low air moisture. Not as warm as the day before. In the morning, brisk northerly winds (20-40 km/hr) at high altitudes, slackening off in the afternoon. At 2000 m: +4 degrees.

On **Sunday**, sunny, some high-altitude clouds. Winds will slacken off noticeably, blow only at light to moderate strength. At 2000 m: +6 degrees

Outlook

No change.

Avalanche problems



Danger ratings

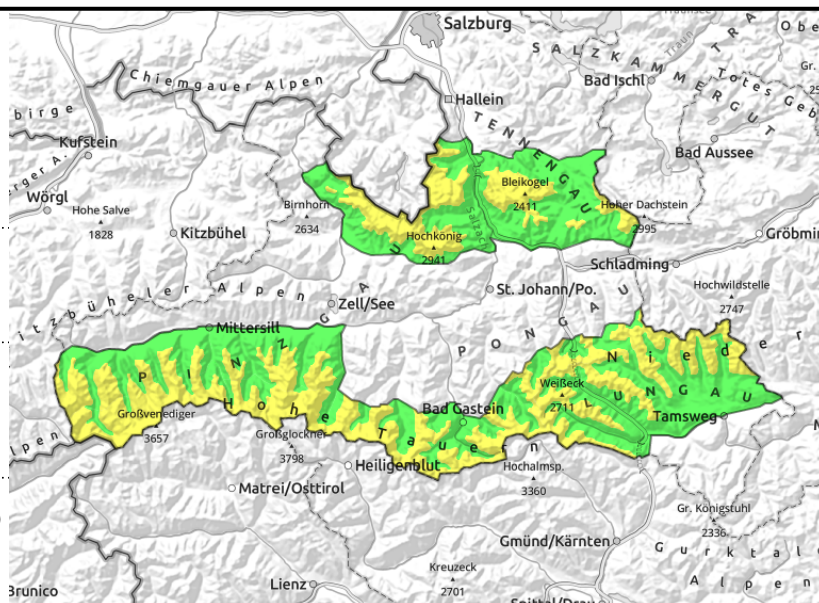


Expositions



01.01.2022

Steinernes Meer, Hochkönig, Hagengebirge, Göllstock, Tennengebirge, Gosaukamm, Glocknergruppe Nord, Großvenedigergruppe Nord, Großvenedigergruppe Alpenhauptkamm, Glocknergruppe Alpenhauptkamm, Goldberggruppe Alpenhauptkamm, Ankogelgruppe, Muhr, Niedere Tauern Alpenhauptkamm, Niedere Tauern Süd



2200 m



distant from ridgelines, transitions from shallow to deep snow



few danger zones in very steep grassy terrain

Persistent weak layer above 2200 m. Below that, isolated glide-snow avalanches

Avalanches above 2200 m is generally MODERATE, below that altitude danger is LOW. Below 2200 m potential dangers of highly isolated glide-snow avalanches on extremely steep slopes. Mostly small-to-medium sized. Above 2200 m, dry-snow slab avalanches can be triggered by large additional loading. Caution in transitions from shallow to deep snow. Potential slabs can grow to dangerously large size. Treacherous: N/E/S aspects. Danger zones are often evident in areas distant from ridgelines. The snowpack surface remains mostly hardened in zones not directly exposed to sunlight. Danger of falling.

Snowpack structure

Up to 2200/2400 m the snow is moist and has a melt-freeze crust which is capable of bearing loads. On purely sunny slopes this crust softens somewhat, in the other aspects it remains hard and dry due to low air moisture. Above 2200/2400 m the terrain is utterly windblown, often with compact layers of snowdrifts deposited atop soft intermediate layers beneath the last melt-freeze crust from mid-December. Elsewhere the old snowpack is compact by and large, and not susceptible to triggering. Most glide-snow and wet-snow avalanches discharged day before yesterday.

Weather

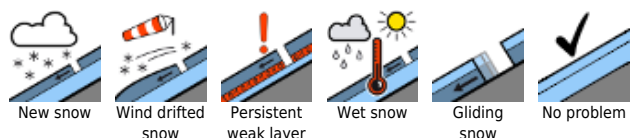
On **Saturday**, sunny, clear skies. Low air moisture. Not as warm as the day before. In the morning, brisk northerly winds (20-40 km/hr) at high altitudes, slackening off in the afternoon. At 2000 m: +4 degrees, at 3000 m 0 degrees.

On **Sunday**, sunny, some high-altitude clouds. Winds will slacken off noticeably, blow only at light to moderate strength. At 2000 m: +6 degrees, at 3000 m, 0 degrees.

Outlook

Little change on Sunday and Monday

Avalanche problems



Danger ratings



Expositions

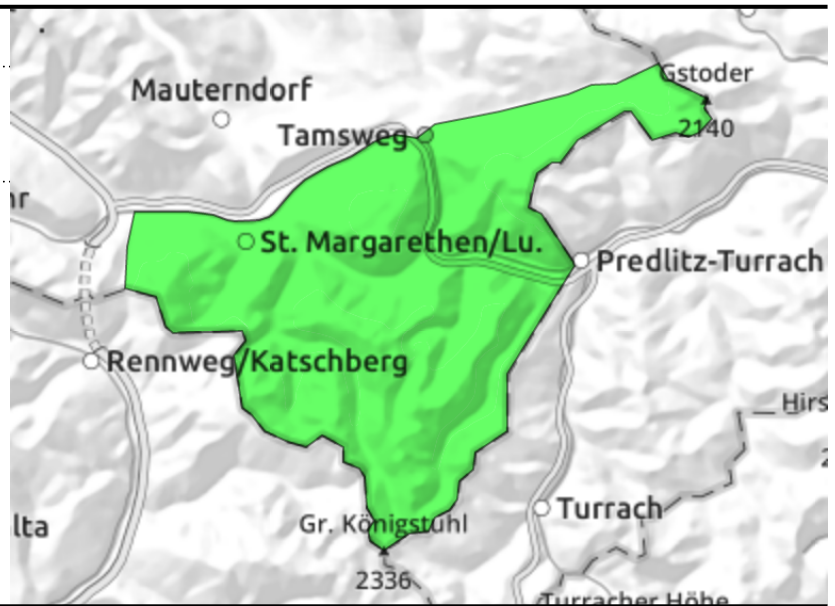


01.01.2022

Nockberge



very few danger zones



hardly any avalanche prone locations

Avalanche danger is LOW. There are hardly any danger zones. Isolated small-sized glide-snow avalanches or superficial wet slides are possible.

Snowpack structure

Compact snowpack with melt-freeze crust, breakable, can soften up during the day on sunny slopes.

Weather

On **Saturday**, sunny and clear. Moisture is low, not quite as warm as the day before. Stormy northerly winds in the morning (up to 60 km/hr), slackening off in the afternoon. At 2000 m: +4 degrees.

On **Sunday**, sunny, with high altitude clouds. Winds will ease, blowing only at light to moderate strength. At 2000 m: +6 degrees

Outlook

No change.

Translated by Jeffrey McCabe, www.creativtrans.com

Avalanche problems



Danger ratings



Expositions

