

Considerable wet-snow problem

	Chiemgauer Alpen, Heutal, Reiteralpe, Osterhorngruppe, Gamsfeldgruppe, Untersbergstock		
	1500 m Loferer und Leoganger Steinberge, Steinernes Meer, Hochkönig, Hagengebirge, Göllstock, Tennengebirge, Gosaukamm, Dientner Grasberge, Kitzbüheler Alpen, Glemmtal, Oberpinzgauer Grasberge, Pongauer Grasberge		
	1500 m Großvenedigergruppe Nord, Großvenedigergruppe Alpenhauptkamm, Glocknergruppe Nord, Glocknergruppe Alpenhauptkamm, Goldberggruppe Nord, Goldberggruppe Alpenhauptkamm, Ankogelgruppe, Muhr		
	Niedere Tauern Nord, Niedere Tauern Alpenhauptkamm, Niedere Tauern Süd		
	Nockberge		

Avalanche problems



Danger ratings



Expositions

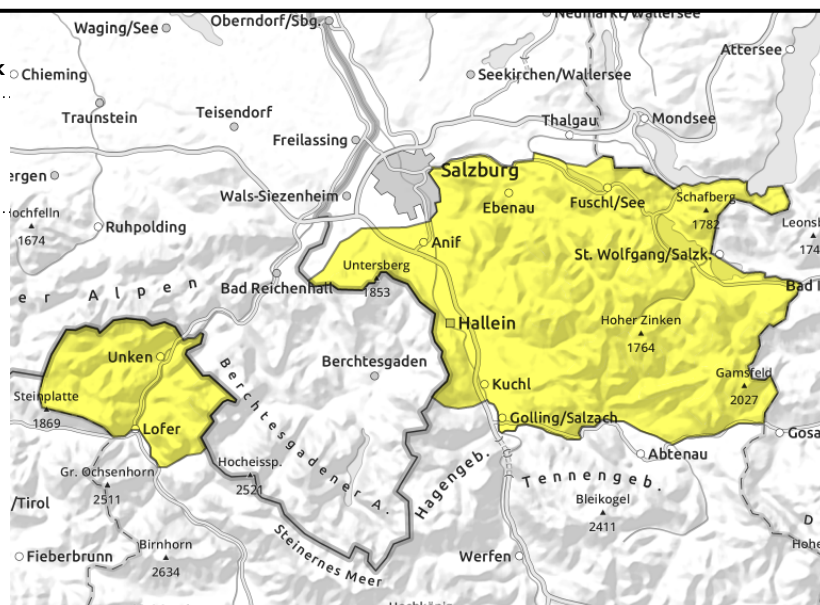


30.12.2021

Chiemgauer Alpen, Heutal, Reiteralpe, Osterhorngruppe, Gamsfeldgruppe, Untersbergstock



heavy rain and wet snowpack



Rain will make the snow just swim away

Avalanche danger is MODERATE. The wet-snow problem dominates. Small-to-medium wet-snow avalanches are possible wherever there is sufficient snow. Even isolated glide-snow avalanches can release where none have yet discharged.

Snowpack structure

The snowpack is thoroughly moist to wet.

Weather

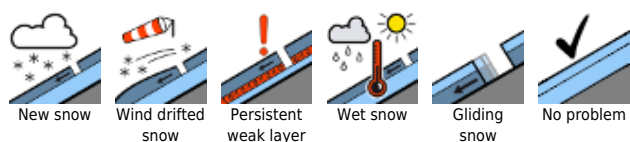
On Thursday, visibility will be reduced due to clouds and fog. Intermittent rainfall. Brisk westerly winds. At 2000 m: +2 degrees. On Thursday night the skies will clear.

On Friday, good visibility. Sunshine. At 2000 m: +7 degrees.

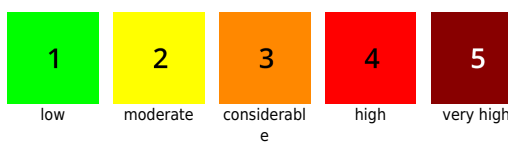
Outlook

Springtime conditions at the end of December.

Avalanche problems



Danger ratings

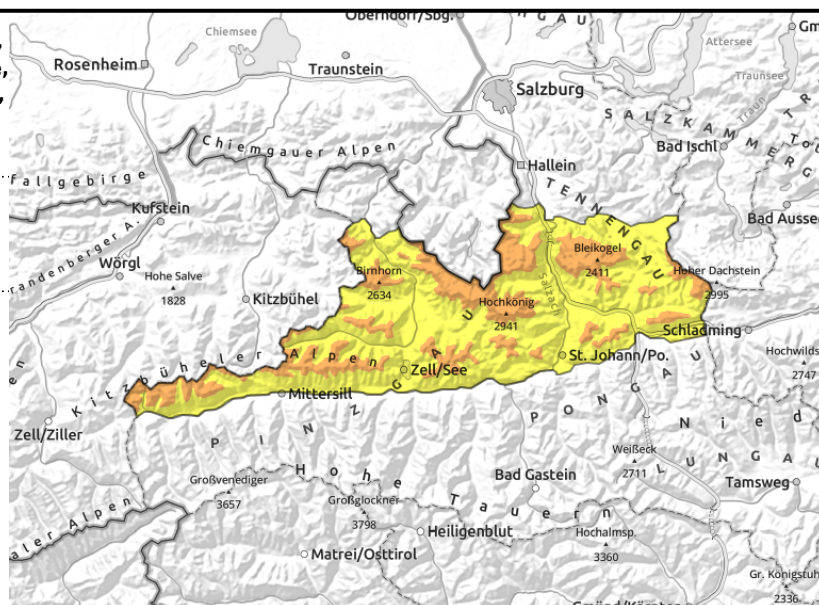
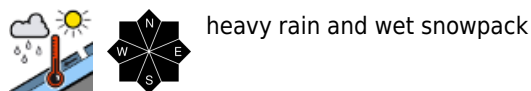


Expositions



30.12.2021

Loferer und Leoganger Steinberge, Steinernes Meer, Hochkönig, Hagengebirge, Göllstock, Tennengebirge, Gosaukamm, Dientner Grasberge, Kitzbüheler Alpen, Glemmtal, Oberpinzgauer Grasberge, Pongauer Grasberge



Wet-snow avalanches in all aspects

Avalanche danger above 1500 m is CONSIDERABLE, below that altitude danger is MODERATE. Wet-snow avalanches can release in all aspects, most small-to-medium, isolated large-sized avalanches, most between 1500 and 2400 m. Apart from wet loose-snow avalanches and isolated wet-slabs, glide-snow avalanches also have to be expected. As of about 2500 m, new snow and storm winds will generate fresh drifts which can often be triggered by minimum additional loading.

Snowpack structure

On the compact old snowpack with melt-freeze crusts, 10-30 cm of moist-to-wet snow has been deposited. As of about 2500 m there is also dry snow (mostly windblown).

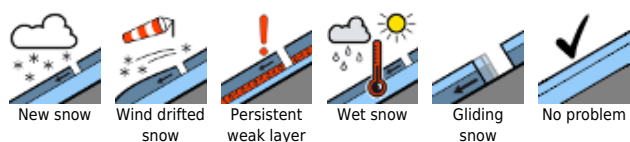
Weather

On Thursday, visibility will be reduced due to clouds and fog. Intermittent rainfall. Strong-to-stormy W/NW winds. At 2000 m: +2 degrees. On Thursday night the skies will clear. On Friday, good visibility. Sunshine. The strong winds will recede. At 2000 m: +7 degrees.

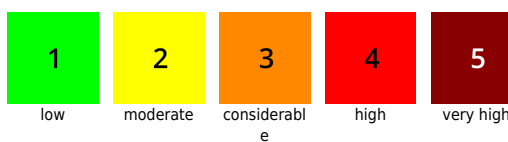
Outlook

Springtime conditions at the end of December.

Avalanche problems



Danger ratings

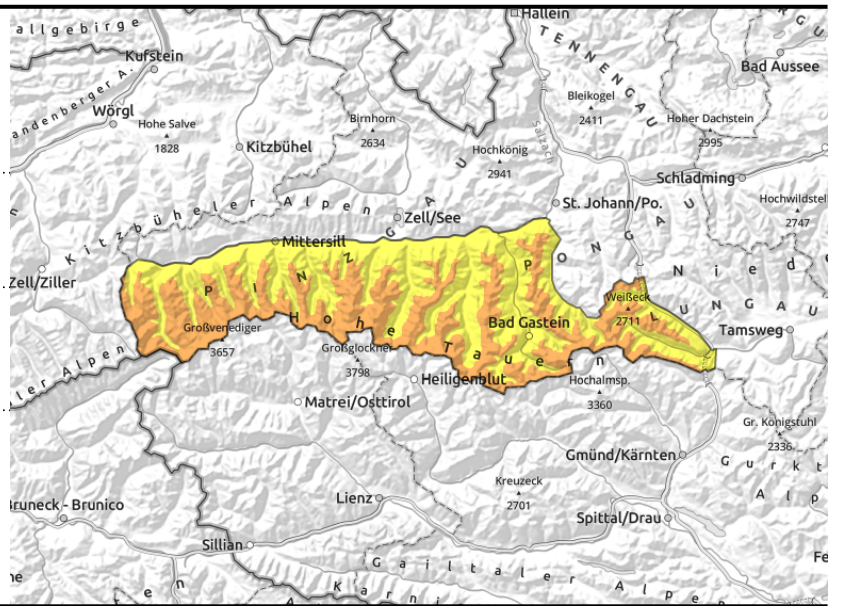
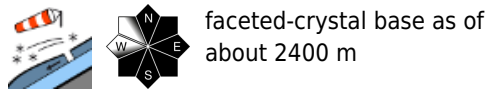


Expositions



30.12.2021

Großvenedigergruppe Nord, Großvenedigergruppe Alpenhauptkamm, Glocknergruppe Nord, Glocknergruppe Alpenhauptkamm, Goldberggruppe Nord, Goldberggruppe Alpenhauptkamm, Ankogelgruppe, Muhr



Also: considerable snowdrift problem at high altitude

Avalanche danger above 1500 m is CONSIDERABLE, below that altitude danger is MODERATE. Wet-snow avalanches can release in all aspects, most small-to-medium, isolated large-sized avalanches, most between 1500 and 2400 m. As of about 2400 m, new snow and storm winds will generate fresh drifts which can often be triggered by minimum additional loading. Naturally triggered dry slabs are possible on heavily wind-loaded high altitude slopes.

Snowpack structure

Atop a melt-freeze crust or a rain-ice layer (often with faceted crystals beneath) there is 10-40 cm of new snow. Up to about 2400 m the upper layer is moist-to-wet. On top of that: dry, often wind-impacted snow. The old snowpack is quite compact for the most part.

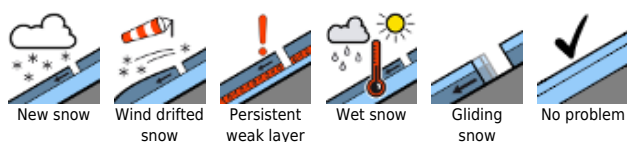
Weather

On Thursday, visibility will be reduced due to clouds and fog. Intermittent rainfall to far over 2000 m. Strong-to-stormy W/NW winds. At 2000 m: +2 degrees. On Thursday night the skies will clear. On Friday, good visibility. Sunshine. The strong winds will recede. At 2000 m: +8 degrees, at 3000 m +2 degrees..

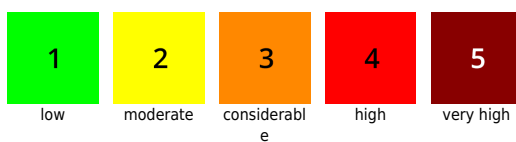
Outlook

Springtime conditions at the end of December.

Avalanche problems



Danger ratings



Expositions



30.12.2021

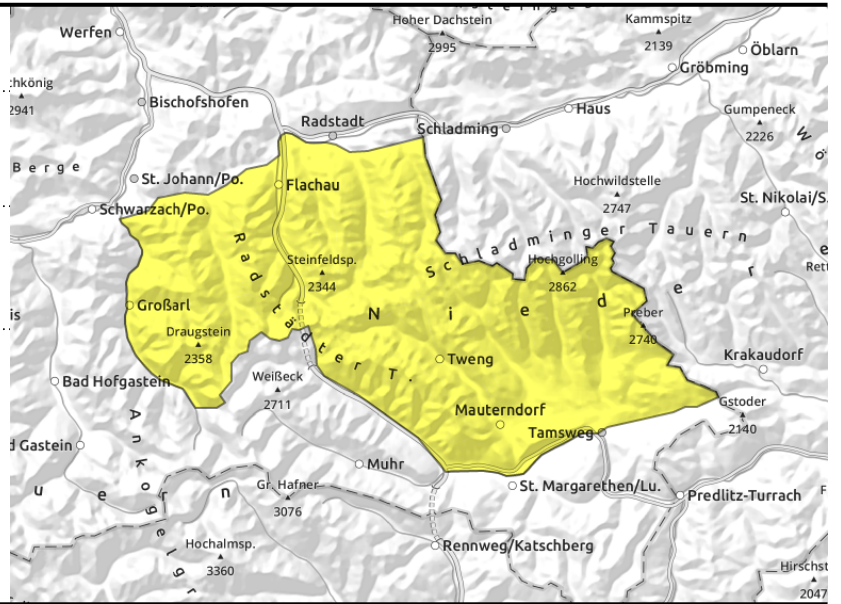
Niedere Tauern Nord, Niedere Tauern Alpenhauptkamm, Niedere Tauern Süd



due to rain



thin, small snowdrift accumulations



Wet-snow avalanches

Avalanche danger above 1500 m is MODERATE. Wet-snow avalanches (loose snow and slabs) can release in all aspects up to 2200 m. As of about 2200 m, moderate snowdrift problem. The drifts are mostly shallow but can often trigger even by the weight of one sole person.

Snowpack structure

Atop a compact old snowpack there is 10-20 cm of moist snow. As of 2200 m the snow can be dry, but is starkly wind-impacted.

Weather

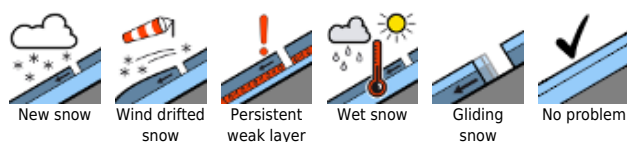
On Thursday, visibility will be reduced due to clouds and fog. Intermittent rainfall. Brisk westerly winds. At 2000 m: +2 degrees. On Thursday night the skies will clear.

On Friday, good visibility. Sunshine. The strong winds will recede. At 2000 m: +7 degrees.

Outlook

Springtime conditions at the end of December.

Avalanche problems



Danger ratings

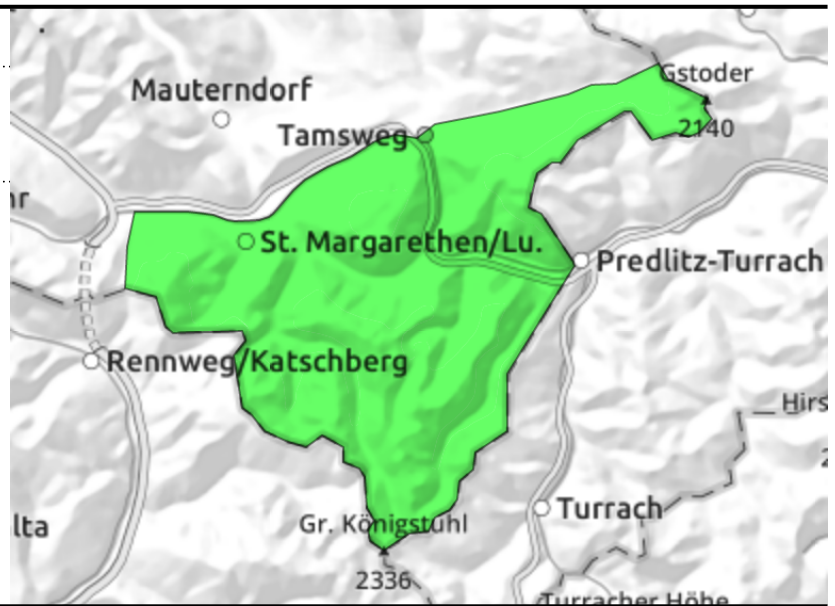
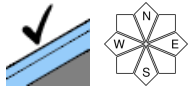


Expositions



30.12.2021

Nockberge



Hardened surfaces dominate

Avalanche danger is low. Isolated wet-snow slides and isolated glide-snow avalanches are possible.

Snowpack structure

Compact snowpack melt-freeze encrusted

Weather

On Thursday, very windy, the NW winds will intermittently disperse the clouds, visibility will vary. At 2000 m: +2 degrees. On Thursday night the skies will clear.

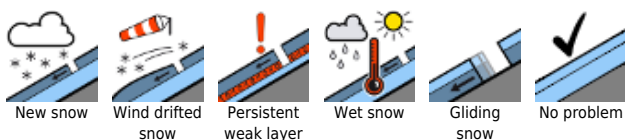
On Friday, good visibility. Sunshine. The strong winds will recede. At 2000 m: +8 degrees.

Outlook

Springtime conditions at the end of December.

Translated by Jeffrey McCabe, www.creativtrans.com

Avalanche problems



Danger ratings



Expositions

