

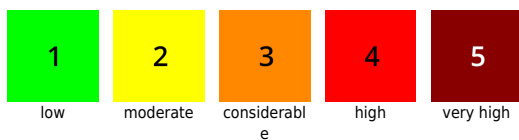
## Caution: fresh snowdrifts

	2000 m Loferer und Leoganger Steinberge, Steinernes Meer, Hochkönig, Hagengebirge, Göllstock, Tennengebirge, Gosaukamm		
	forestline Chiemgauer Alpen, Heutal, Reiteralpe, Untersbergstock, Osterhorngruppe, Gamsfeldgruppe, Kitzbüheler Alpen, Glemmtal, Oberpinzgauer Grasberge, Großvenedigergruppe Nord, Glocknergruppe Nord, Goldberggruppe Nord, Dientner Grasberge, Pongauer Grasberge, Niedere Tauern Nord, Niedere Tauern Alpenhauptkamm, Niedere Tauern Süd		
	forestline Großvenedigergruppe Alpenhauptkamm, Glocknergruppe Alpenhauptkamm, Goldberggruppe Alpenhauptkamm, Ankogelgruppe, Muhr		
	Nockberge		

### Avalanche problems



### Danger ratings



### Expositions

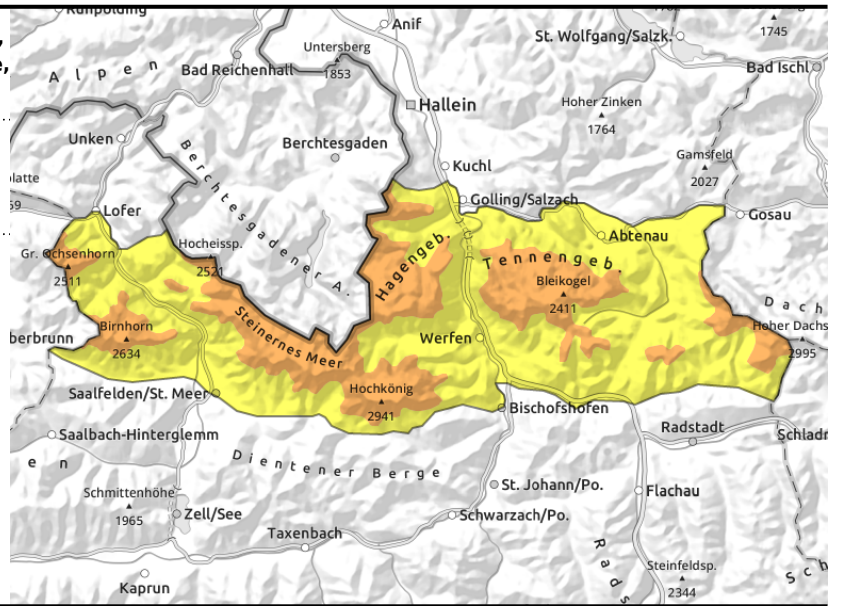


**29.12.2021**

**Loferer und Leoganger Steinberge, Steinernes Meer, Hochkönig, Hagengebirge, Göllstock, Tennengebirge, Gosaukamm**



distant from ridgelines, atop unfavorable base



**New snow and storm wind: fresh snowdrifts**

Avalanche danger above 2000 is CONSIDERABLE, below that altitude danger is LOW. Fresh snowdrift accumulations are the main peril. Most of the danger zones are distant from ridgelines in extended eastern aspects and wind-loaded gullies and bowls in all aspects. The drifts are generally easy to recognize and should be circumvented in steep terrain. Triggered slabs are generally small-to-medium sized.

**Snowpack structure**

A relatively stable old snowpack. On Tuesday night about 20 cm of fresh snow is anticipated, to be transported by storm-strength westerly winds. With increasing altitude, new snow / snowdrifts bond more poorly to the base with a melt-freeze crust.

**Weather**

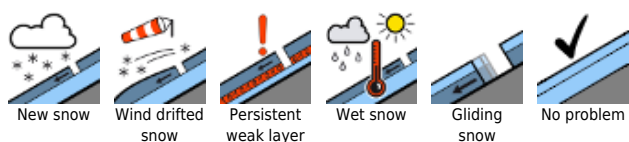
On Wednesday the snowfall (snowfall level at 1300 m) will come to an end in the morning. In afternoon, visibility will be quite good, some sunshine is expected. The W/NW winds will be strong-to-stormy. As evening approaches the cloud cover will become heavier, precipitation will again set in. At 2000 m: -3 degrees.

On Thursday visibility will be poor, rainfall is expected to reach up to over 2300 m. Strong to stormy W/NW winds will continue to rage. At 2000 m: +4 degrees.

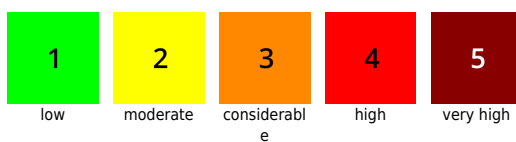
**Outlook**

On Thursday rainfall to over 2000 m due to a warm front. Considerable wet-snow problem.

**Avalanche problems**



**Danger ratings**



**Expositions**

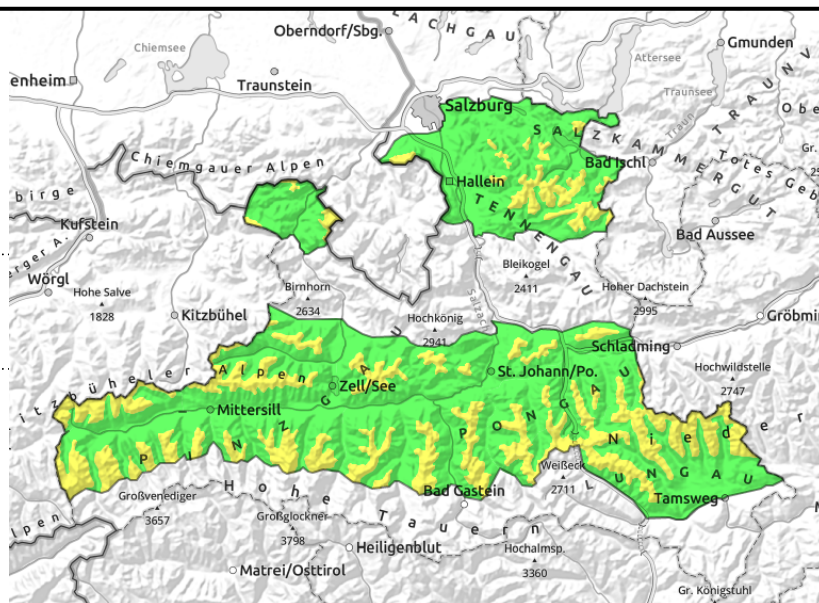


**29.12.2021**

**Chiemgauer Alpen, Heutal, Reiteralpe, Untersbergstock, Osterhorngruppe, Gamsfeldgruppe, Kitzbüheler Alpen, Glemmtal, Oberpinzgauer Grasberge, Großvenedigergruppe Nord, Glocknergruppe Nord, Goldberggruppe Nord, Dientner Grasberge, Pongauer Grasberge, Niedere Tauern Nord, Niedere Tauern Alpenhauptkamm, Niedere Tauern Süd**



thin, small snowdrift patches, near/far from ridgelines, often easily triggered



## Avoid fresh snowdrifts in steep terrain

Avalanche danger above the treeline is MODERATE, below that altitude danger is LOW. Fresh, thin snowdrift patches can often trigger even by minimum additional loading. Most slabs will remain small. Danger zones occur both near to and (with increasing altitude) distant from ridgelines in extended eastern aspects and in wind-loaded gullies and bowls. The drifts are generally easy to recognize and should be circumvented in very steep and extremely steep terrain.

## Snowpack structure

A relatively stable old snowpack. On Tuesday night about 5-10 cm of fresh snow is anticipated, to be transported by storm-strength westerly winds. With increasing altitude, new snow / snowdrifts bond more poorly to the base with a melt-freeze crust.

## Weather

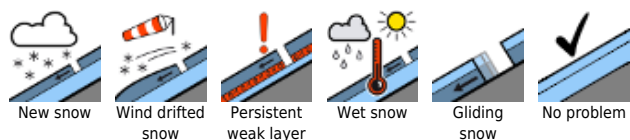
On Wednesday the snowfall (snowfall level at 1300 m) will come to an end in the morning. In afternoon, visibility will be quite good, some sunshine is expected. The W/NW winds will be strong-to-stormy. As evening approaches the cloud cover will become heavier, precipitation will again set in. At 2000 m: -3 degrees.

On Thursday visibility will be poor, rainfall is expected to reach up to over 2300 m. Strong to stormy W/NW winds will continue to rage. At 2000 m: +4 degrees.

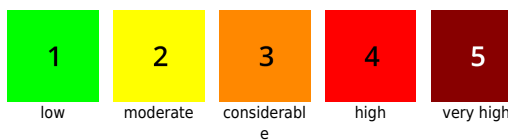
## Outlook

On Thursday rainfall to over 2000 m due to a warm front. Considerable wet-snow problem.

### Avalanche problems



### Danger ratings



### Expositions



**Großvenedigergruppe Alpenhauptkamm,  
Glocknergruppe Alpenhauptkamm, Goldberggruppe  
Alpenhauptkamm, Ankogelgruppe, Muhr**



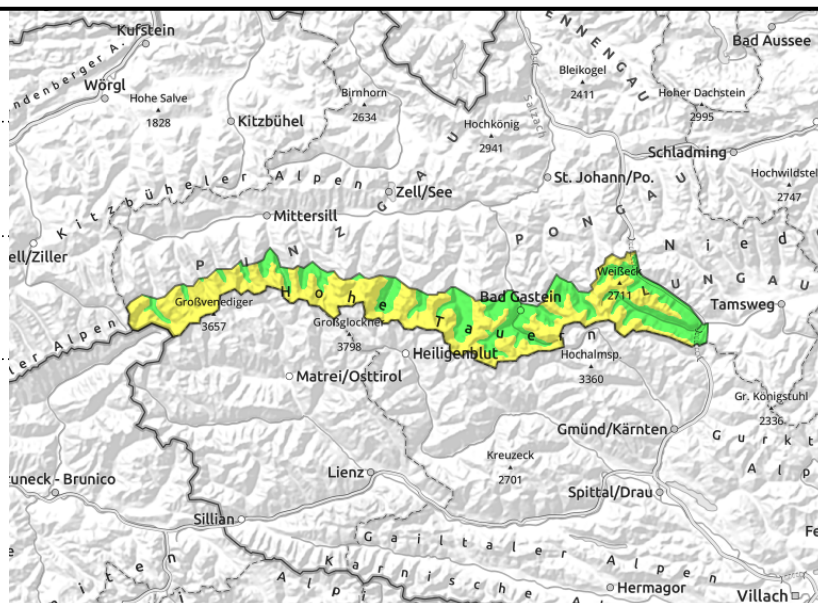
forestline



thin, small snowdrift patches



shady terrain, high alpine regions, steep and shallow-snow



**Avoid fresh snowdrifts in steep terrain**

Avalanche danger above the treeline is MODERATE, below that altitude danger is LOW. Fresh, thin snowdrift patches can often trigger even by minimum additional loading. Most slabs will remain small. Danger zones occur both near to and (with increasing altitude) distant from ridgelines in extended E/S aspects and in wind-loaded gullies and bowls. The drifts are generally easy to recognize and should be circumvented in very steep and extremely steep terrain. If one is unlucky, in shady terrain above 2300 m the old snowpack could fracture deeper down and unleash a large-sized slab.

**Snowpack structure**

On Tuesday night, about 10 cm of new snow is expected, to be transported by strong-to-stormy W/NW winds. With increasing altitude the bonding of new snow and drifts to the melt-freeze encrusted snowpack worsens. The old snowpack is relatively stable. A potential trigger-sensitive layer of facted and soft old snow is evident in the shallow-snow zones at high altitudes in the lower third of the snowpack.

**Weather**

On Wednesday the snowfall (snowfall level at 1300 m) will come to an end in the morning. In afternoon, visibility will be quite good, some sunshine is expected. The W/NW winds will be strong-to-stormy. As evening approaches the cloud cover will become heavier, precipitation will again set in. At 2000 m: -3 degrees, at 3000 m -9 degrees.

On Thursday visibility will be poor, rainfall is expected to reach up to over 2300 m. Strong to stormy W/NW winds will continue to rage. At 2000 m: +4 degrees, at 3000 m -1 degree.

**Outlook**

On Thursday rainfall to over 2000 m due to a warm front. Considerable wet-snow problem.

**Avalanche problems**



**Danger ratings**



**Expositions**

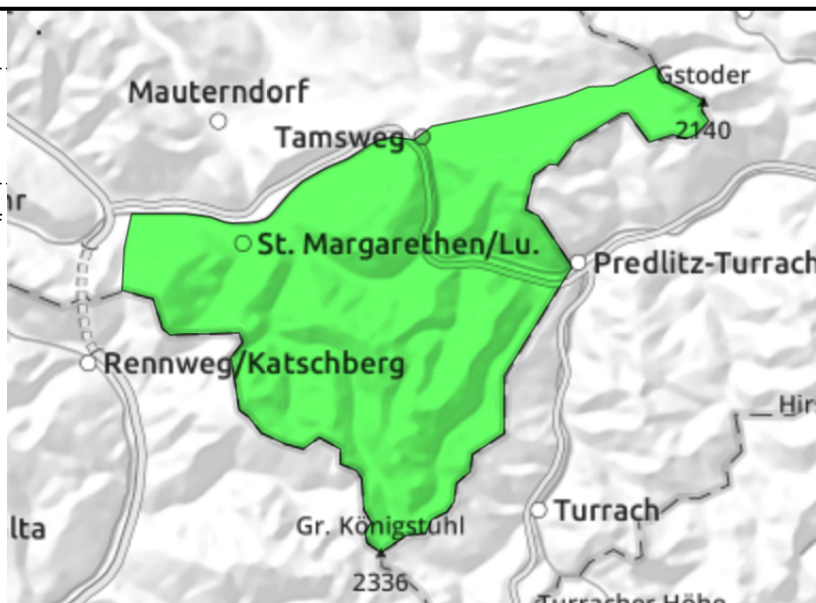


# 29.12.2021

## Nockberge



Risk of falling outweighs that of being caught in an avalanche



## Hardly any danger zones

The few cm of new snow / drifts do not change the basic situation. Avalanche danger is low. There are very few avalanche prone locations where a slab can be triggered by large additional loading.

## Snowpack structure

Melt-freeze encrusted surfaces dominate. The old snowpack is stable.

## Weather

On Wednesday visibility will improve during the day. As of midday, some sunshine. Strong NW winds will often be blowing. At 2000 m: -3 degrees.

On Thursday visibility will worsen, rainfall expected, plus strong winds. Mild: at 2000m +3 degrees.

## Outlook

Wet-snow problem due to rainfall and higher temperatures.

Translated by Jeffrey McCabe, [www.creativtrans.com](http://www.creativtrans.com)

### Avalanche problems



New snow



Wind drifted snow



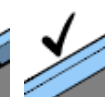
Persistent weak layer



Wet snow



Gliding snow



No problem

### Danger ratings



1

low



2

moderate



3

considerable



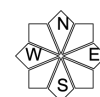
4

high



5

very high



### Expositions