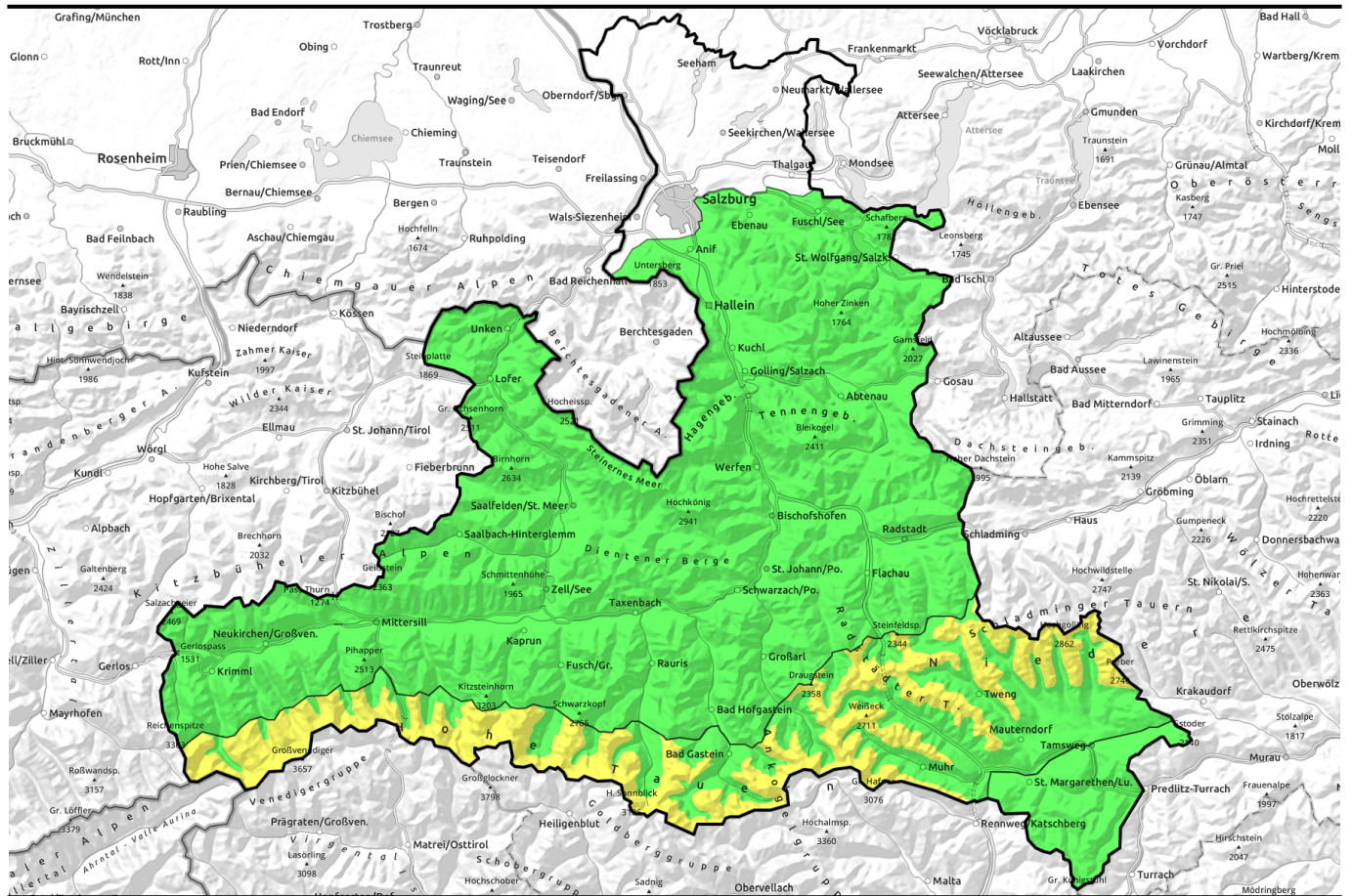


25.12.2021



Few danger zones, poor snow quality



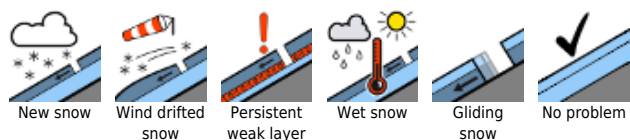
Osterhorngruppe, Gamsfeldgruppe, Untersbergstock, Tennengebirge, Gosaukamm, Steinernes Meer, Hochkönig, Hagengebirge, Göllstock, Chiemgauer Alpen, Heutal, Reiteralpe, Kitzbüheler Alpen, Glemmtal, Loferer und Leoganger Steinberge, Dientner Grasberge, Pongauer Grasberge, Niedere Tauern Nord, Goldberggruppe Nord, Glocknergruppe Nord, Großvenedigergruppe Nord, Oberpinzgauer Grasberge, Nockberge



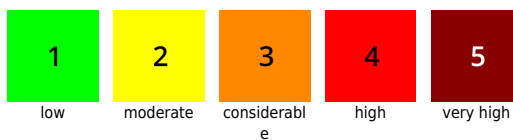
Niedere Tauern Alpenhauptkamm, Niedere Tauern Süd, Ankogelgruppe, Muhr, Goldberggruppe Alpenhauptkamm, Glocknergruppe Alpenhauptkamm, Großvenedigergruppe Alpenhauptkamm



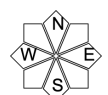
Avalanche problems



Danger ratings

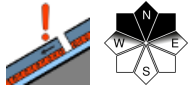
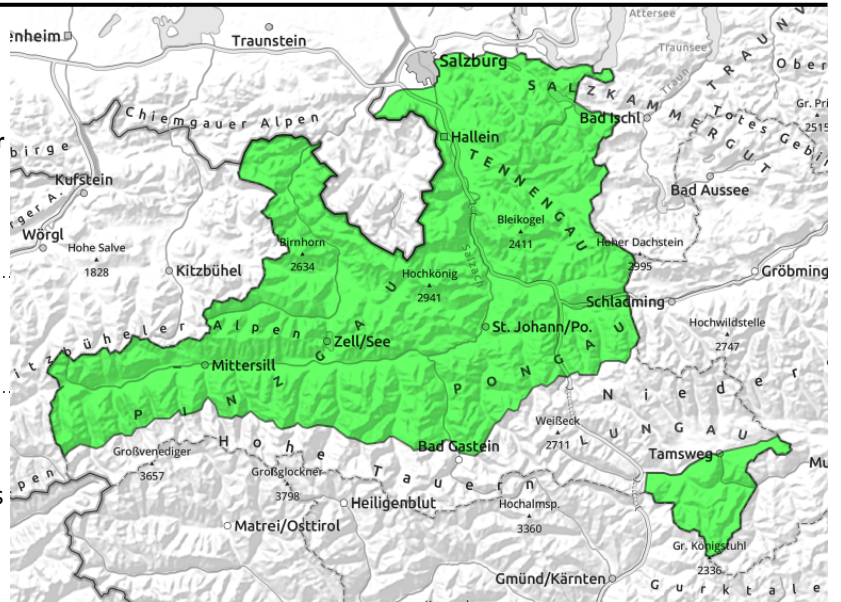


Expositions



25.12.2021

Osterhorngruppe, Gamsfeldgruppe, Untersbergstock, Tennengebirge, Gosaukamm, Steinernes Meer, Hochkönig, Hagengebirge, Göllstock, Chiemgauer Alpen, Heutal, Reiteralpe, Kitzbüheler Alpen, Glemmtal, Loferer und Leoganger Steinberge, Dientner Grasberge, Pongauer Grasberge, Niedere Tauern Nord, Goldberggruppe Nord, Glocknergruppe Nord, Großvenedigergruppe Nord, Oberpinzgauer Grasberge, Nockberge



few danger zones, very steep, shallow-snow north-facing slopes, treacherous: transitions from shallow to deeper snow

Very few danger zones, weak layer in old snow

Avalanche danger is low. There are very few potential avalanche prone locations where large additional loading can invariably trigger a slab from the persistent weak layer, most likely on extremely steep slopes with relatively shallow-snow above about 2200 m in E/N aspects. Shallow-snow and extremely steep slopes near ridgelines should be assessed critically or, even better, circumvented. The danger of taking a fall on steel-hard surface outweighs the danger of triggering an avalanche.

Snowpack structure

Strong, in some places stormy W/S winds, mild temperatures, minimum fresh snow at high altitudes (rain under 1700 m) have deteriorated snow quality. Melt-freeze encrusted surfaces (hard as steel, icy, breakable, snowdrift patches) dominate, crests and ridges are utterly windblown. Beneath the melt-freeze crusts is a weak layer.

A potential trigger-sensitive layer of faceted and soft snow is at high altitudes. Current stability tests show that the tendency towards fracture propagation is minimal, at least over surface-wide areas.

Weather

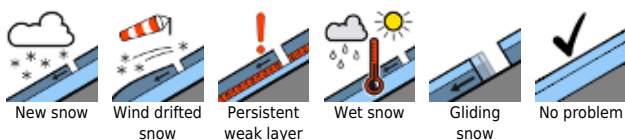
On **Saturday** on the northern rim of the Alps, initially more clouds, but hardly any precipitation and generally adequate visibility. Further south sunshine and cloud will alternate, with good visibility. Only in exposed terrain: moderate winds. At 2000 m: -2 to +1 degree; at 3000 m: -5 degrees.

On **Sunday**, visibility at high altitudes on the northern rim of the Alps is often impaired by fog, but hardly any precipitation is expected. Elsewhere visibility is generally adequate, though light conditions are diffuse. Winds mostly light. At 2000 m: 0 degrees; at 3000 m: -8 degrees.

Outlook

No significant change is expected.

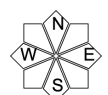
Avalanche problems



Danger ratings

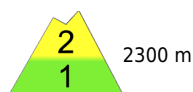


Expositions

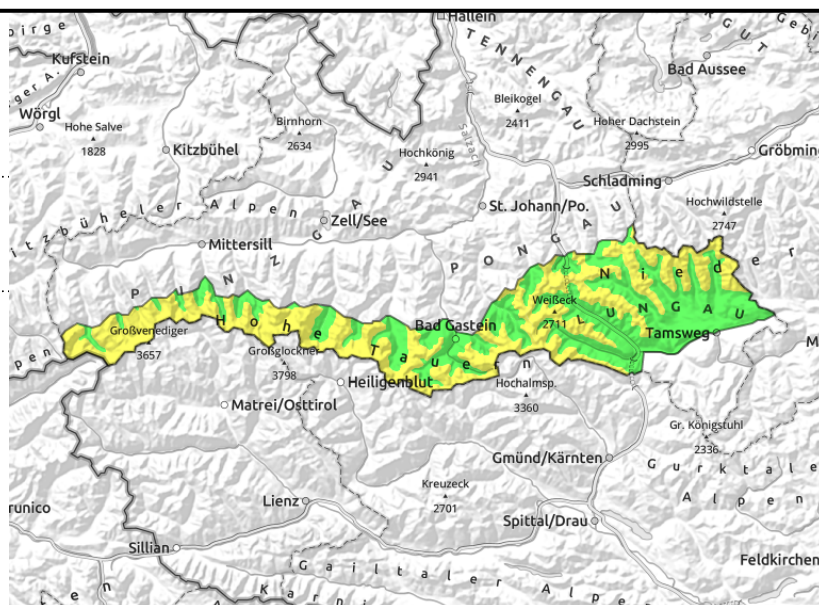


25.12.2021

Niedere Tauern Alpenhauptkamm, Niedere Tauern Süd, Ankogelgruppe, Muhr, Goldberggruppe Alpenhauptkamm, Glocknergruppe Alpenhauptkamm, Großvenedigergruppe Alpenhauptkamm



steep, shallow-snow in extended northern aspects above 2300 m



Continuing caution in northern aspects in high alpine regions

Moderate avalanche danger above 2300m, below 2300m danger is low.

Main problem: trigger-sensitive intermediate layers at ground-level in the old snow. Isolated slab avalanches can be triggered on shady steep slopes by large additional loading, particularly where the snow is shallow, i.e. at entries to gullies and bowls, particularly in places where there is relatively shallow snow compared to the immediate vicinity, i.e. at entries to gullies and bowls. Triggered avalanches can be of small-to-medium size.

Snowpack structure

Melt-freeze encrusted surfaces (hard as steel, icy, breakable, snowdrift patches, melt-freeze from the rain) dominate, recent mild temperatures and often storm-strength W/S winds have worsened snow quality. Inside the snowpack the recent layers are relatively well bonded. A potential trigger-sensitive layer of faceted and soft snow is at high altitudes. Current stability tests show that the tendency towards fracture propagation is minimal, at least over surface-wide areas.

Weather

On **Saturday** on the northern rim of the Alps, initially more clouds, but hardly any precipitation and generally adequate visibility. Further south sunshine and cloud will alternate, with good visibility. Only in exposed terrain: moderate winds. At 2000 m: -2 to +1 degree; at 3000 m: -5 degrees.

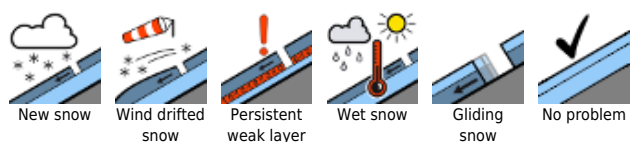
On **Sunday**, visibility at high altitudes on the northern rim of the Alps is often impaired by fog, but hardly any precipitation is expected. Elsewhere visibility is generally adequate, though light conditions are diffuse. Winds mostly light. At 2000 m: 0 degrees; at 3000 m: -8 degrees.

Outlook

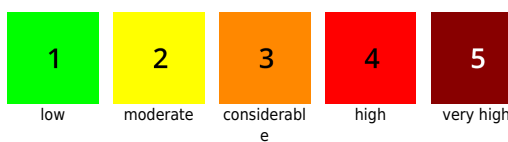
No significant change to begin with

Translated by Jeffrey McCabe, www.creativtrans.com

Avalanche problems



Danger ratings



Expositions

