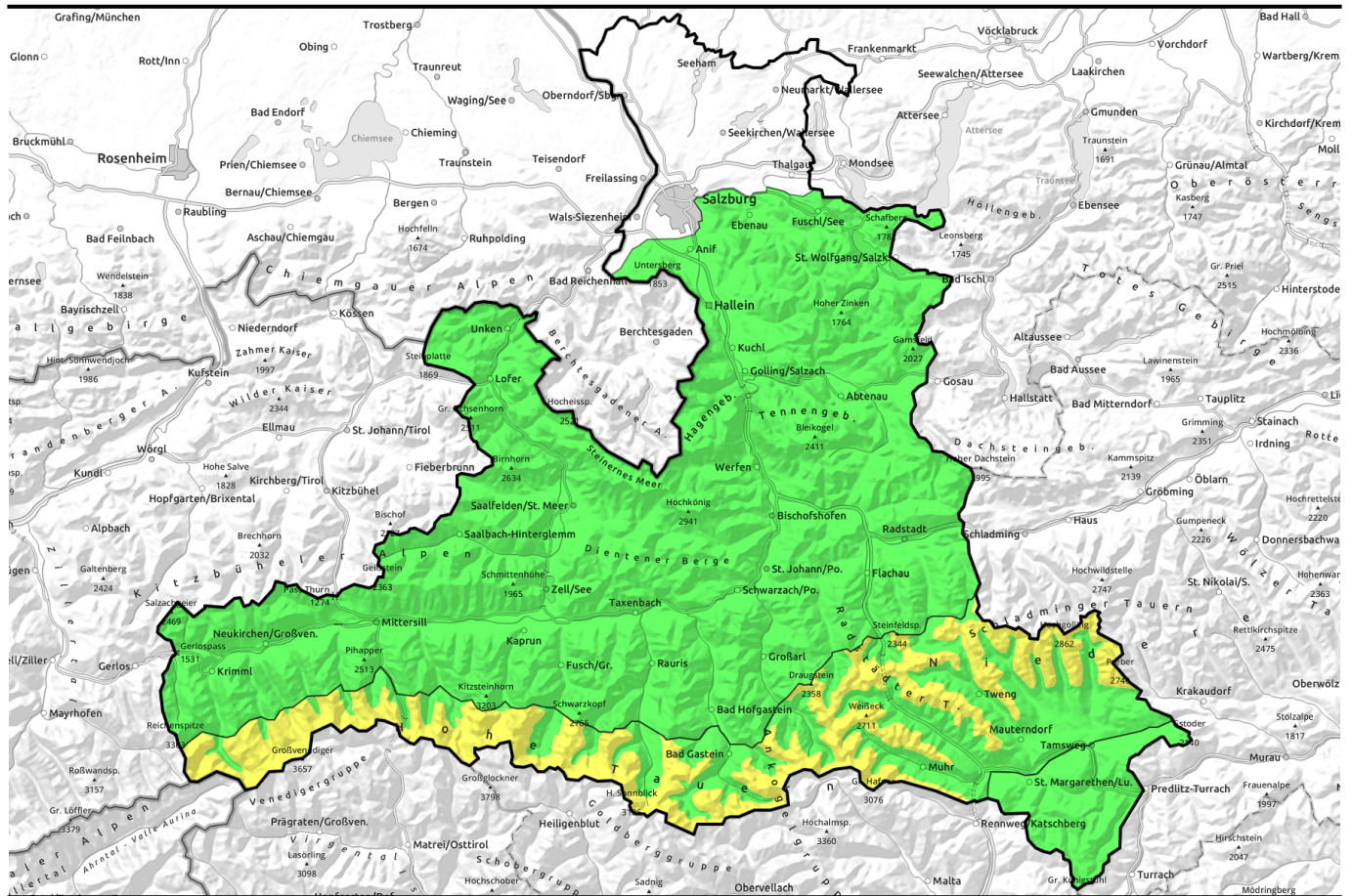


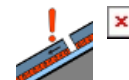
**23.12.2021**



## Unchanged situation: moderate persistent weak layer problem in high alpine regions

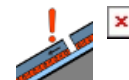


Osterhorngruppe, Gamsfeldgruppe, Untersbergstock, Tennengebirge, Gosaukamm, Steinernes Meer, Hochkönig, Hagengebirge, Göllstock, Chiemgauer Alpen, Heutal, Reiteralpe, Kitzbüheler Alpen, Glemmtal, Loferer und Leoganger Steinberge, Dientner Grasberge, Pongauer Grasberge, Niedere Tauern Nord, Goldberggruppe Nord, Glocknergruppe Nord, Großvenedigergruppe Nord, Oberpinzgauer Grasberge, Nockberge

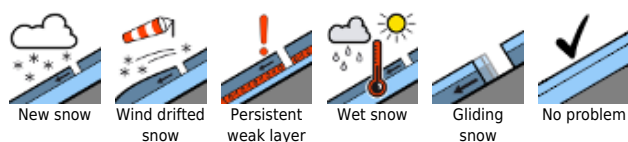


2300 m

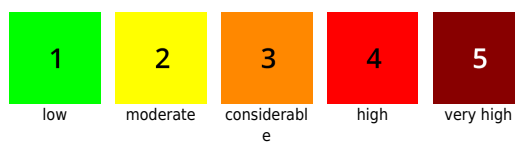
Niedere Tauern Alpenhauptkamm, Niedere Tauern Süd, Ankogelgruppe, Muhr, Goldberggruppe Alpenhauptkamm, Glocknergruppe Alpenhauptkamm, Großvenedigergruppe Alpenhauptkamm



### Avalanche problems



### Danger ratings

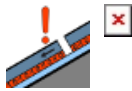
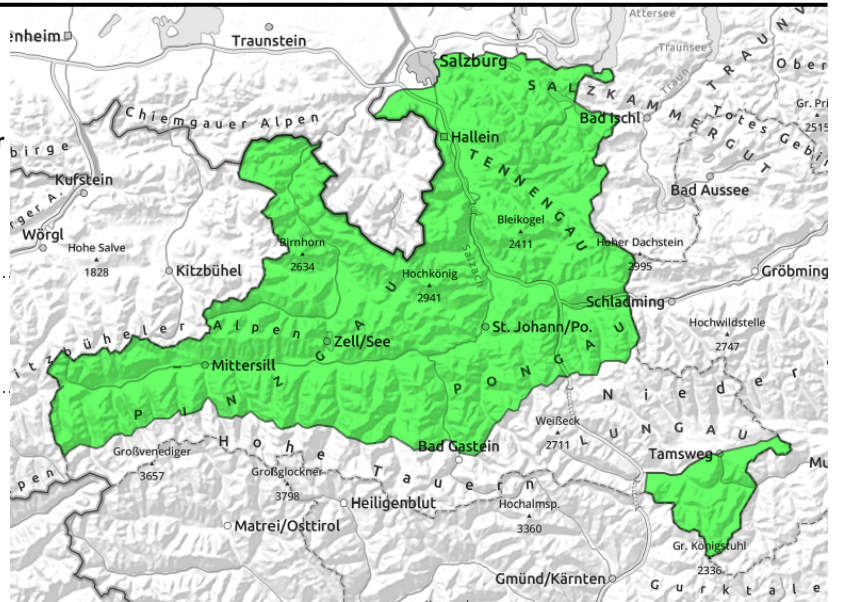


### Expositions



**23.12.2021**

**Osterhorngruppe, Gamsfeldgruppe, Untersbergstock, Tennengebirge, Gosaukamm, Steinernes Meer, Hochkönig, Hagengebirge, Göllstock, Chiemgauer Alpen, Heutal, Reiteralpe, Kitzbüheler Alpen, Glemmtal, Loferer und Leoganger Steinberge, Dientner Grasberge, Pongauer Grasberge, Niedere Tauern Nord, Goldberggruppe Nord, Glocknergruppe Nord, Großvenedigergruppe Nord, Oberpinzgauer Grasberge, Nockberge**



few danger zones, very steep, in shallow-snow north-facing terrain

## Few danger zones but very poor snow quality

Avalanche danger continues to be low. There are very few potential avalanche prone locations where large additional loading can invariably trigger a slab from the persistent weak layer, most likely on extremely steep slopes with relatively shallow-snow above about 2200 m in E/N aspects. Shallow-snow and extremely steep slopes near ridgelines should be circumvented. The danger of taking a fall on steel-hard surface outweighs the danger of triggering an avalanche.

### Snowpack structure

Melt-freeze encrusted surface (hard as steel, icy, breakable, snowdrift patches) dominate. Beneath this is a soft layer.

A potential trigger-sensitive layer of faceted and soft snow is evident starting at 2000/2200m in E/N aspects. This weak layer is currently not easily triggered or, if so, only over small spaces and is not area-wide.

### Weather

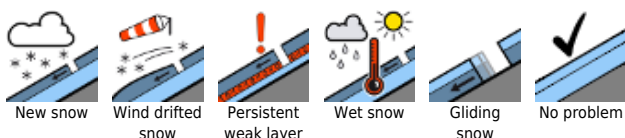
On **Thursday** clouds will pass through, the summit will remain free but light conditions will become diffuse. Milder: at 2000 m, 0 degrees. Westerly winds will reach 30-40 km/hr in exposed terrain, up to 60 km/hr on the Alpine rim in the afternoon

On **Friday** in the furthest north, a small amount of snowfall (rain below 1600 m) is possible, but soon thereafter dry weather will set in. Particularly in inneralpine regions the sun will come through. Strong W/NW winds in exposed terrain above the treeline. At 2000 m: 0 degrees, at 3000 m: -5 degrees.

### Outlook

Still no significant change

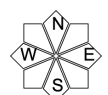
#### Avalanche problems




#### Danger ratings




#### Expositions



**23.12.2021**

Niedere Tauern Alpenhauptkamm, Niedere Tauern Süd, Ankogelgruppe, Muhr, Goldberggruppe Alpenhauptkamm, Glocknergruppe Alpenhauptkamm, Großvenedigergruppe Alpenhauptkamm 



steep, shallow-snow north-facing terrain above 2300 m 

## Caution urged on shallow-snow northern high alpine slopes

Moderate avalanche danger above 2300m, below 2300m danger is low.

Main problem: trigger-sensitive intermediate layers at ground-level in the old snow. Isolated slab avalanches can be triggered on shady steep slopes by large additional loading, particularly where the snow is shallow, i.e. at entries to gullies and bowls. Triggered avalanches can be of small-to-medium size.

### Snowpack structure

Melt-freeze encrusted surfaces (hard as steel, icy, breakable, snowdrift patches, melt-freeze from the rain) dominate. Inside the snowpack the recent layers are relatively well bonded. A potential trigger-sensitive layer of faceted and soft snow is at high altitudes. The tendency towards fracture propagation is moderate to strong.

### Weather

On **Thursday** clouds will pass through, the summit will remain free but light conditions will become diffuse. Milder: at 2000 m, 0 degrees. Westerly winds will reach 30-40 km/hr in exposed terrain, up to 60 km/hr on the Alpine rim in the afternoon

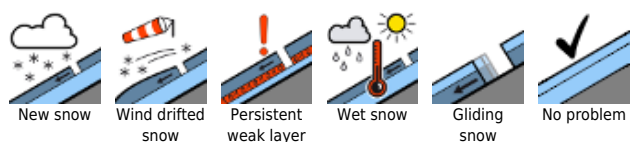
On **Friday** in the furthest north, a small amount of snowfall (rain below 1600 m) is possible, but soon thereafter dry weather will set in. Particularly in inneralpine regions the sun will come through. Strong W/NW winds in exposed terrain above the treeline. At 2000 m: 0 degrees, at 3000 m: -5 degrees.

### Outlook

Still no significant change. Only when the next round of snowfall arrives will the situation change significantly atop the unfavourable snow base.

Translated by Jeffrey McCabe, [www.creativtrans.com](http://www.creativtrans.com)

#### Avalanche problems



#### Danger ratings



#### Expositions

