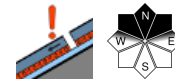


Moderate persistent weak layer problem in high alpine regions



Osterhorngruppe, Gamsfeldgruppe, Untersbergstock, Steinernes Meer, Hochkönig, Hagengebirge, Göllstock, Chiemgauer Alpen, Heutal, Reiteralpe, Loferer und Leoganger Steinberge, Kitzbüheler Alpen, Glemmtal, Oberpinzgauer Grasberge, Dientner Grasberge, Pongauer Grasberge, Niedere Tauern Nord, Goldberggruppe Nord, Tennengebirge, Gosaukamm, Glocknergruppe Nord, Großvenedigergruppe Nord, Nockberge

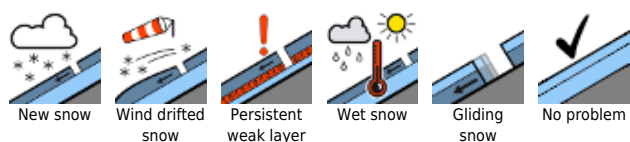


2300 m

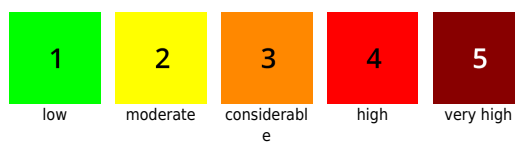
Großvenedigergruppe Alpenhauptkamm, Glocknergruppe Alpenhauptkamm, Goldberggruppe Alpenhauptkamm, Niedere Tauern Alpenhauptkamm, Ankogelgruppe, Muhr, Niedere Tauern Süd



Avalanche problems



Danger ratings

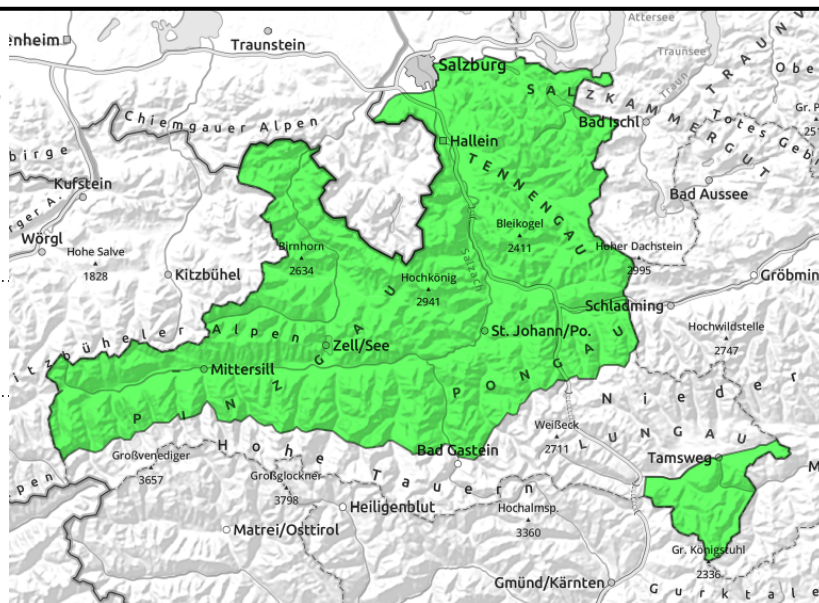


Expositions



22.12.2021

Osterhorngruppe, Gamsfeldgruppe, Untersbergstock, Steinernes Meer, Hochkönig, Hagengebirge, Göllstock, Chiemgauer Alpen, Heutal, Reiteralpe, Loferer und Leoganger Steinberge, Kitzbüheler Alpen, Glemmtal, Oberpinzgauer Grasberge, Dientner Grasberge, Pongauer Grasberge, Niedere Tauern Nord, Goldberggruppe Nord, Tennengebirge, Gosaukamm, Glocknergruppe Nord, Großvenedigergruppe Nord, Nockberge



few danger zones, very steep, in shallow-snow north-facing terrain

Few danger zones but very poor snow quality

Avalanche danger continues to be low. There are very few potential avalanche prone locations where large additional loading can invariably trigger a slab from the persistent weak layer, most likely on extremely steep slopes with relatively shallow-snow above about 2200 m in E/N aspects. Shallow-snow and extremely steep slopes near ridgelines should be circumvented. The danger of taking a fall on the thin layer of fresh snow (only a few centimetres) outweighs the danger of triggering an avalanche.

Snowpack structure

Melt-freeze encrusted surface (hard as steel, icy, breakable, snowdrift patches) dominate. Beneath this is a soft layer.

A potential trigger-sensitive layer of faceted and soft snow is evident starting at 2000/2200m in E/N aspects. This weak layer is currently not easily triggered or, if so, only over small spaces and is not area-wide.

Weather

On Wednesday, sunshine and outstanding visibility. Winds will be mostly light. At 2000 m: -3 degrees. Towards evening, thin cirrus clouds will move in.

On Thursday cloudbanks will pass through, the summits will remain free, but light conditions will become diffuse. Higher temperatures: at 2000 m about 0 degrees. Winds will be westerly, blowing often at brisk strength.

Outlook

No change.

Avalanche problems



New snow



Wind drifted snow



Persistent weak layer



Wet snow



Gliding snow



No problem

Danger ratings



1

low



2

moderate



3

considerable



4

high



5

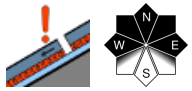
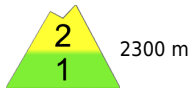
very high

Expositions

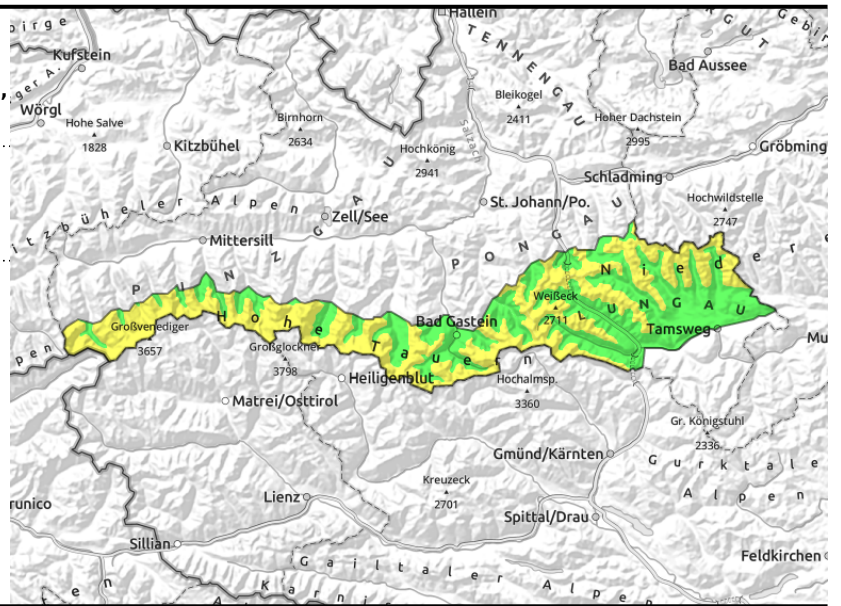


22.12.2021

**Großvenedigergruppe Alpenhauptkamm,
Glocknergruppe Alpenhauptkamm, Goldberggruppe
Alpenhauptkamm, Niedere Tauern Alpenhauptkamm,
Ankogelgruppe, Muhr, Niedere Tauern Süd**



steep, shallow-snow north-facing terrain above 2300 m



Caution urged on shallow-snow northern high alpine slopes

Moderate avalanche danger above 2300m, below 2300m danger is low.

Main problem: trigger-sensitive intermediate layers at ground-level in the old snow. Isolated slab avalanches can be triggered on shady steep slopes by large additional loading, particularly where the snow is shallow, i.e. at entries to gullies and bowls. Triggered avalanches can be of small-to-medium size.

Snowpack structure

Melt-freeze encrusted surfaces (hard as steel, icy, breakable, snowdrift patches, melt-freeze from the rain) dominate. Inside the snowpack the recent layers are relatively well bonded. A potential trigger-sensitive layer of faceted and soft snow is at high altitudes. The tendency towards fracture propagation is moderately strong.

Weather

On Wednesday, sunshine and outstanding visibility. Winds will be mostly light. At 2000 m: -3 degrees, at 3000 m -8 degrees.

On Thursday cloudbanks will pass through, the summits will remain free, but light conditions will become diffuse. Higher temperatures: at 2000 m about 0 degrees, at 3000 m -5 degrees. Winds will be northwesterly, blowing often at brisk strength.

Outlook

Little change.

Translated by Jeffrey McCabe, www.creativtrans.com

Avalanche problems



Danger ratings



Expositions

