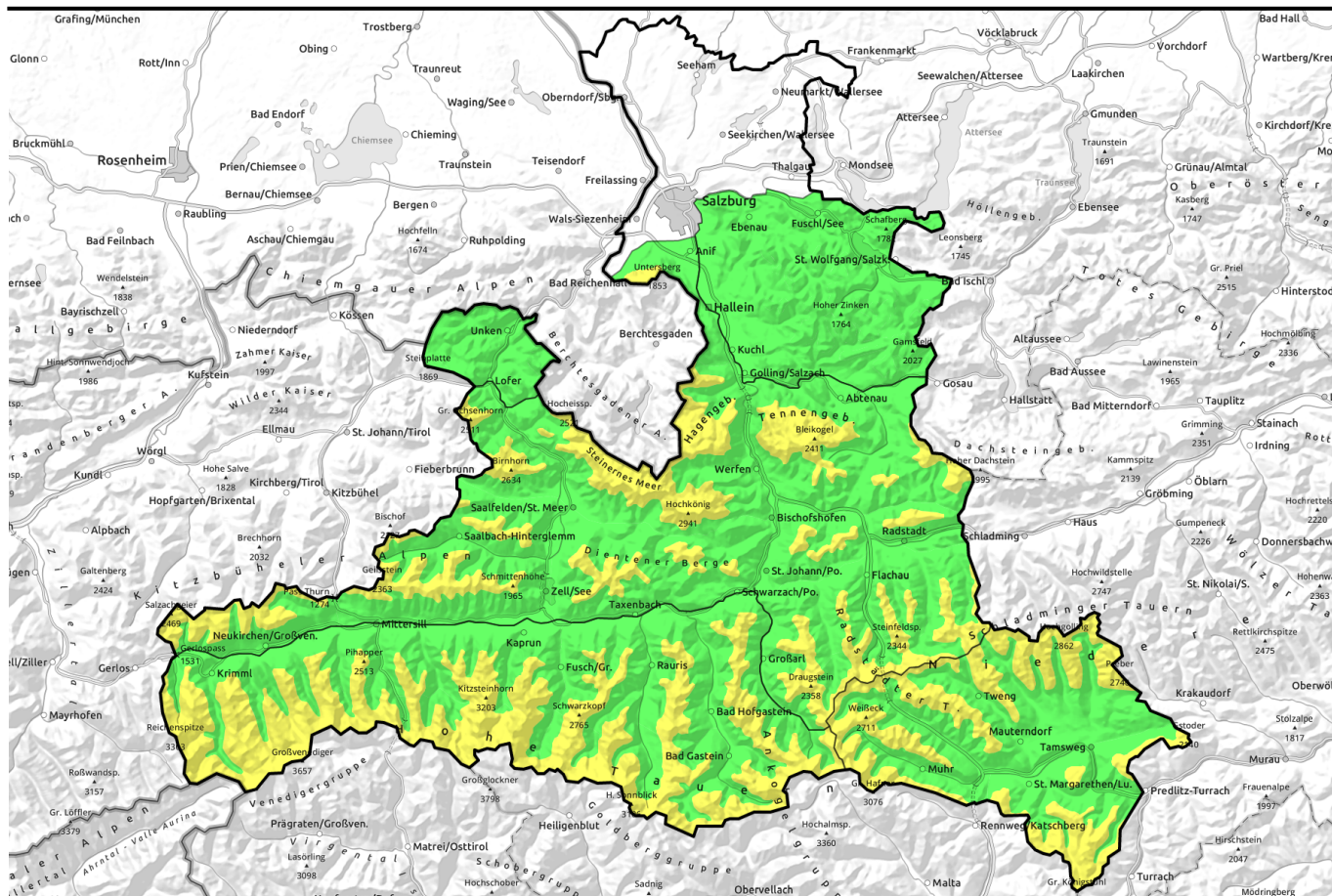


**18.12.2021**



## Older snowdrifts at high altitudes + gliding snow problem

	Osterhorngruppe, Gamsfeldgruppe, Chiemgauer Alpen, Heutal, Reiteralpe	
	1800 m Steinernes Meer, Hochkönig, Hagengebirge, Göllstock, Untersbergstock, Tennengebirge, Gosaukamm, Kitzbüheler Alpen, Glemmtal, Oberpinzgauer Grasberge, Loferer und Leoganger Steinberge, Dientner Grasberge, Pongauer Grasberge, Niedere Tauern Nord, Niedere Tauern Alpenhauptkamm	
	1800 m Glocknergruppe Alpenhauptkamm, Glocknergruppe Nord, Großvenedigergruppe Alpenhauptkamm, Goldberggruppe Nord, Goldberggruppe Alpenhauptkamm, Großvenedigergruppe Nord	
	1800 m Nockberge, Niedere Tauern Süd, Ankogelgruppe, Muhr	

### Avalanche problems



### Danger ratings



### Expositions



**18.12.2021**

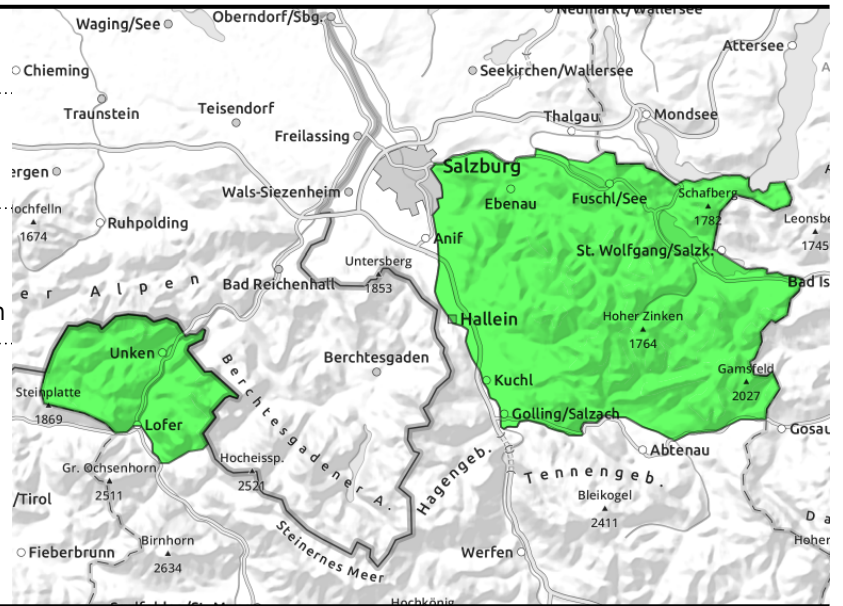
**Osterhorngruppe, Gamsfeldgruppe, Chiemgauer Alpen, Heutal, Reiteralpe**



in gullies, steep bowls, behind protruberances, above 1400 m triggerable in non-steep terrain



extremely steep or seldom used terrain



**Favourable conditions, few avalanche prone locations**

Avalanche danger is LOW. Avalanche prone locations are few. Triggering a small-to-medium slab is possible by large additional loading in the danger zones. In very steep areas, naturally triggered small-to-medium glide-snow avalanches are possible.

**Snowpack structure**

The moistened snowpack from Monday's rainfall has regained firmness through the nocturnal cooling and is often melt-freeze encrusted on the surface, though frequently soft at low altitudes. At high altitudes of the Gamsfeld Massif there is a few centimetres of snow lying deposited atop thin crusts, under which faceted crystals have formed. On steep smooth grass-covered ground the snowpack often glides away. Above the treeline there are compact snowdrifts in gullies and bowls.

**Weather**

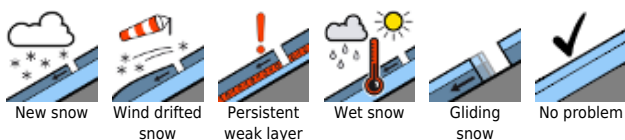
Saturday will have good visibility above the high fog, whose upper border will descend (compared to recent days). Winds will not disturb. Temperatures will be slightly lower. Zero-degree level at about 1500 m.

Also on Sunday, generally sunny (apart from the high fog). Somewhat milder, at 1500 m: up to +2 degrees.

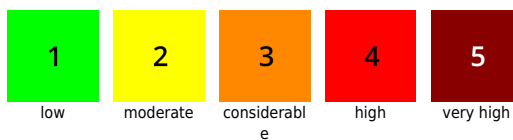
**Outlook**

Favourable conditions will continue.

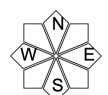
**Avalanche problems**



**Danger ratings**



**Expositions**



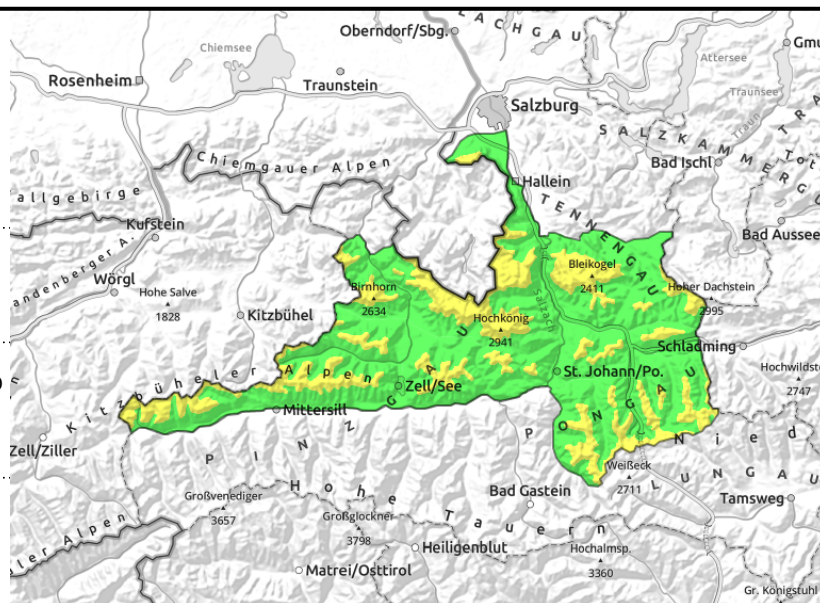
**18.12.2021**

**Steinernes Meer, Hochkönig, Hagengebirge, Göllstock, Untersbergstock, Tennengebirge, Gosaukamm, Kitzbüheler Alpen, Glemmtal, Oberpinzgauer Grasberge, Loferer und Leoganger Steinberge, Dientner Grasberge, Pongauer Grasberge, Niedere Tauern Nord, Niedere Tauern Alpenhauptkamm**



above treeline, in gullies, steep bowls, especially treacherous are rimlines of snowdrifts

in extremely steep grass-covered terrain below 2300 m



### Older drifts in gullies

Avalanche danger above the treeline is MODERATE, below that altitude danger is LOW. In very steep terrain below 2300 m, isolated naturally triggered glide-snow avalanches of medium size are possible. Above the treeline, moreover, there is moderate danger of slab avalanches. Danger zones focus on gullies in all aspects and wind-loaded steep terrain particularly in NW/E/S aspects. Triggering a small-to-medium slab is possible especially by large additional loading, i.e. a fall or stamping the snow.

### Snowpack structure

Warmth, rainfall (light drizzle up to 2700 m in places) and the subsequent cooling of the snowpack have led to a re-gain in firmness up to intermediate altitudes, the moistened snowpack is now superficially melt-freeze encrusted. The snowpack is gliding over steep, smooth grass-covered slopes over the ground, however, Above the treeline there are older snowdrifts in gullies and bowls which is now blanketed by a few centimetres of settled new snow (at high altitudes of the Tennen Massif and Gosaukamm, up to 10-20 cm). At higher altitudes in wind-protected terrain the loose old snow can serve as a weak layer beneath the lightly bonded fresh snow which has recently been deposited on top of it.

### Weather

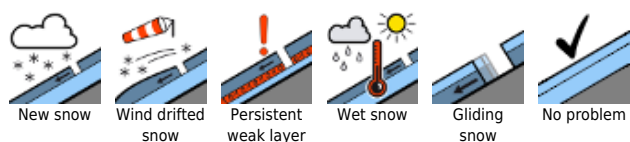
Saturday will start sunny in the mountains, it will still be foggy in the valleys. Cloudless skies will be far-reaching. Winds in the Tauern will be brisk from N/NW. At 2000 m: maximum -3 to -1 degree; at 3000 m: maximum -5 degrees.

On Sunday, similar conditions, mostly sunny with good visibility. At high altitudes often windy. Slightly milder.

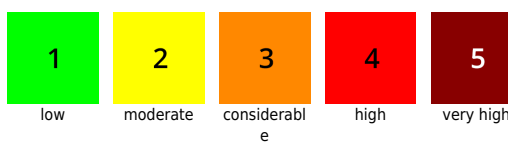
### Outlook

Little change.

#### Avalanche problems



#### Danger ratings

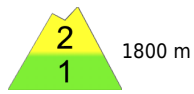


#### Expositions



**18.12.2021**

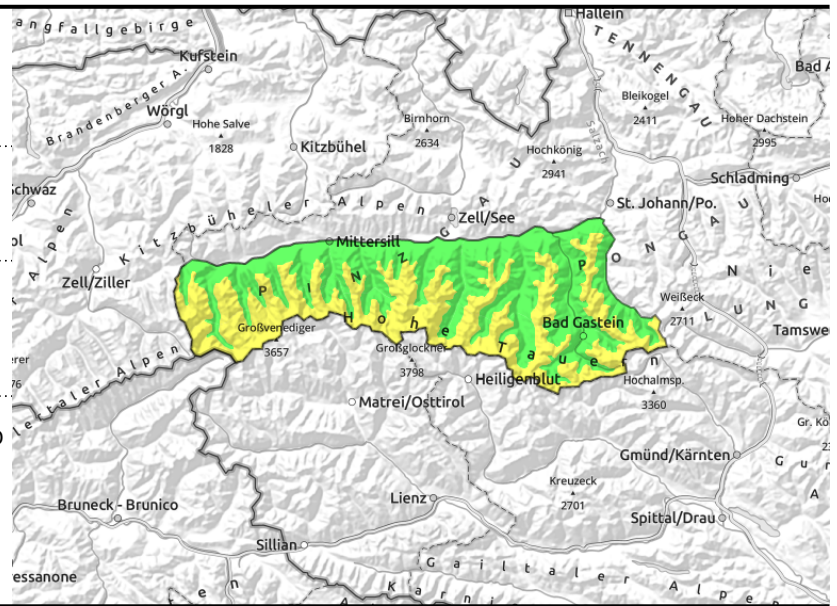
**Glocknergruppe Alpenhauptkamm, Glocknergruppe Nord, Großvenedigergruppe Alpenhauptkamm, Goldberggruppe Nord, Goldberggruppe Alpenhauptkamm, Großvenedigergruppe Nord**



wide-ranging snowdrifts above treeline in gullies and steep bowls



glide-snow avalanches in steep grassy terrain below 2300 m



## Fresh drifts esp. in high alpine regions

Danger of avalanches is MODERATE above 1800 m, LOW below that altitude. In very steep terrain below 2300 m, isolated naturally triggered glide-snow avalanches up to medium size are possible. Above the treeline, avalanche prone locations tend to increase with ascending altitude, due to snowdrift accumulations. Avalanche prone locations focus on gullies in all aspects, especially E/S aspects. Triggering a small-to-medium sized slab avalanche there is possible even by minimum additional loading. Transitions zones from shallow to deeper snow can be treacherous; the weak layers in the old snowpack can be triggered and fracture.

## Snowpack structure

Warmth, rainfall and the subsequent cooling of the snowpack have led to a re-gain in firmness up to intermediate altitudes, the moistened snowpack is now superficially melt-freeze encrusted, often up to 2700 m. The snowpack beneath 2300 m is gliding over steep, smooth grass-covered slopes over the ground, however. In high alpine regions, fresh thin snowdrift accumulations are being generated by NW winds. In exposed zones, wind-crusts dominate. In high alpine regions, particularly on shady slopes above about 2200 m, weak soft layers of faceted crystals are weakening the snowpack fundament.

## Weather

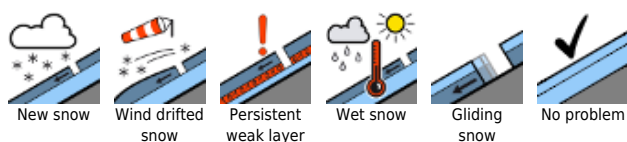
Saturday will start sunny in the mountains, it will still be foggy in the valleys. Cloudless skies will be far-reaching. Winds in the Tauern will be brisk from N/NW. At 2000 m: maximum -3 to -1 degree; at 3000 m: maximum -5 degrees.

On Sunday, similar conditions, mostly sunny with good visibility. At high altitudes often windy. Slightly milder.

## Outlook

Little change on Sunday. Fresh, shallow snowdrifts require attention at high altitudes. Danger of naturally triggered glide-snow releases.

### Avalanche problems



### Danger ratings



### Expositions



# 18.12.2021

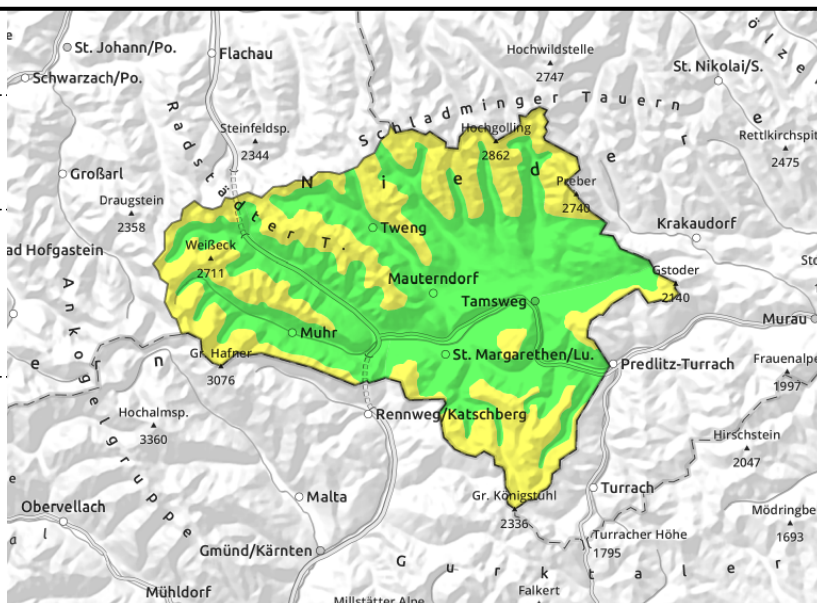
## Nockberge, Niedere Tauern Süd, Ankogelgruppe, Muhr



thin, small snowdrift masses behind protruberances, exposed terrain windblown, in gullies and steep bowls



in shady terrain above 2300 m, triggerable in transitions from shallow to deeper snow



## Fresh snowdrifts from northerly foehn wind

Danger of avalanches is MODERATE above 1800 m, LOW below that altitude. Avalanche prone locations focus on gullies in all aspects and wind-loaded steep terrain (drifts esp. in E/S/W aspects). The drifts are still thin, not area-wide, but are prone to triggering. Triggering a small-to-medium sized slab avalanche there is possible even by minimum additional loading in some places.

## Snowpack structure

Increasingly strong northerly foehn wind starting on Friday, new in high alpine regions. Potential fracture point: faceted crystals below the thin melt-freeze crust which formed through the higher temperatures and minor rainfall up to high alpine regions at the beginning of the week. Proneness to triggering of older snowdrift masses from last week in all aspects has diminished. Ground-level soft layers of faceted-crystal riddled layers are weakening the fundament on shady slopes above 2300 m.

## Weather

Saturday will start sunny in the mountains, it will still be foggy in the valleys. Cloudless skies will be far-reaching. Winds in the Tauern will be brisk from N/NW. At 2000 m: maximum -3 to -1 degree; at 3000 m: maximum -5 degrees.

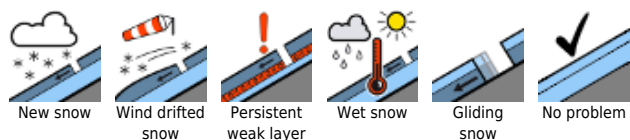
On Sunday, similar conditions, mostly sunny with good visibility. At high altitudes often windy. Slightly milder.

## Outlook

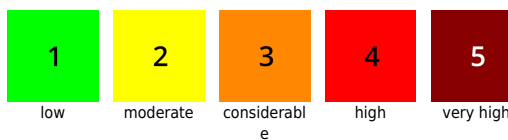
Little change on Sunday. Avoid fresh snowdrift accumulations!

Translated by Jeffrey McCabe, [www.creativtrans.com](http://www.creativtrans.com)

### Avalanche problems



### Danger ratings



### Expositions

