

Older snowdrifts at high altitudes + gliding snow problem

	forestline	Osterhorngruppe, Gamsfeldgruppe, Chiemgauer Alpen, Heutal, Reiteralpe	
	forestline	Steinernes Meer, Hochkönig, Hagengebirge, Göllstock, Untersbergstock, Tennengebirge, Gosaukamm, Kitzbüheler Alpen, Glemmtal, Oberpinzgauer Grasberge, Loferer und Leoganger Steinberge, Dientner Grasberge, Pongauer Grasberge, Niedere Tauern Nord, Niedere Tauern Alpenhauptkamm	
	1800 m	Glocknergruppe Alpenhauptkamm, Glocknergruppe Nord, Großvenedigergruppe Alpenhauptkamm, Goldberggruppe Nord, Goldberggruppe Alpenhauptkamm, Großvenedigergruppe Nord	
	1800 m	Nockberge, Niedere Tauern Süd, Ankogelgruppe, Muhr	

Avalanche problems



Danger ratings

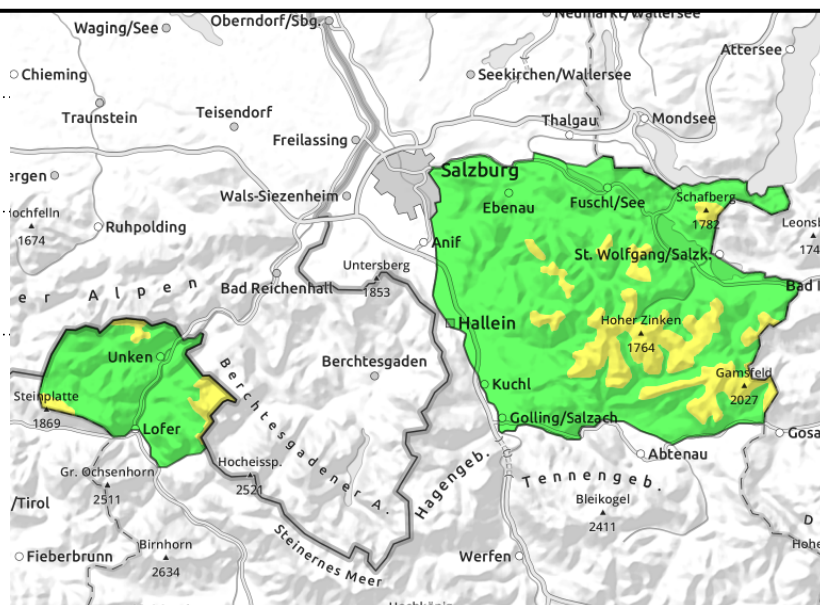
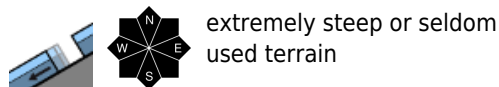
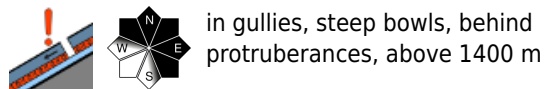


Expositions



17.12.2021

Osterhorngruppe, Gamsfeldgruppe, Chiemgauer Alpen, Heutal, Reiteralpe



Isolated naturally triggered glide-snow avalanches

The danger of avalanches above the timberline is MODERATE, below that altitude danger is low. Avalanche prone locations focus on gullies and wind-loaded steep slopes in NW/E/S aspects. Triggering a small-to-medium slab is possible there by large additional loading. In very steep zones, small-to-medium sized glide-snow avalanches can trigger naturally.

Snowpack structure

The moistened snowpack due to rainfall on Monday has swiftly re-gained firmness and is superficially melt-freeze encrusted, due to nighttime cooling. However, at low altitudes the snowpack is often soft. At higher altitudes of the Gamsfeld Massif, there is a few centimetres of fresh snow deposited atop thin crusts, beneath which faceted crystals have formed in places. On steep, smooth grass-covered slopes the snowpack is currently gliding over the ground. Above the timberline there are compact older snowdrifts in gullies and bowls.

Weather

On Friday, skies will initially be gloomy due to high fog extending up to 1300 m. Starting at midday the high fog can disperse here or there. Milder: at 1500 m: +2 degrees. On Saturday above the high fog the visibility will be adequate. The high-fog border will descend, compared to previous days. Winds will be no disturbance. Temperatures will drop slightly, the zero-degree level will lie at about 1500 m.

Outlook

Little change.

Avalanche problems



Danger ratings

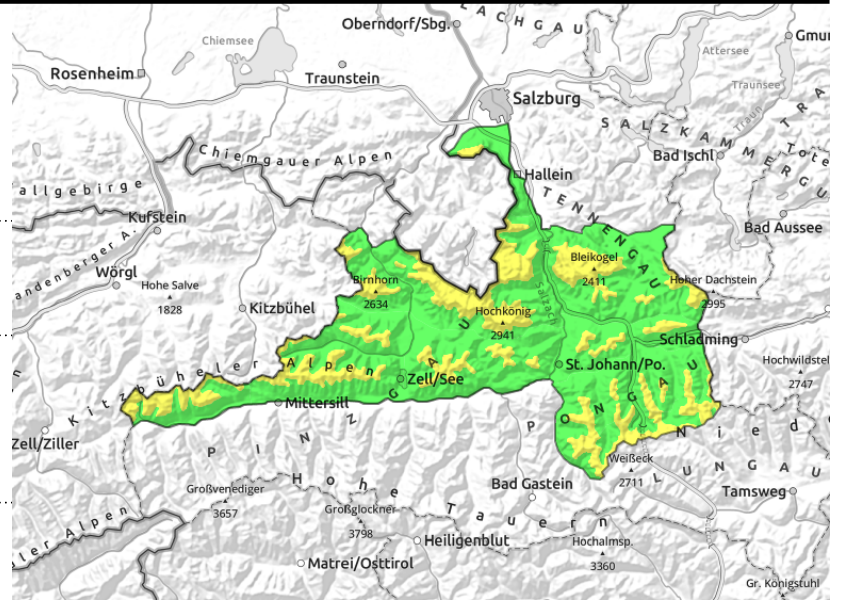


Expositions



17.12.2021

Steinernes Meer, Hochkönig, Hagengebirge, Göllstock, Untersbergstock, Tennengebirge, Gosaukamm, Kitzbüheler Alpen, Glemmtal, Oberpinzgauer Grasberge, Loferer und Leoganger Steinberge, Dientner Grasberge, Pongauer Grasberge, Niedere Tauern Nord, Niedere Tauern Alpenhauptkamm



forestline



above the treeline, in gullies and steep bowls, rimlines of snowdrifts are especially treacherous



in extremely steep grass-covered terrain below 2300 m

Older snowdrifts in gullies

Danger of avalanches is MODERATE above the timberline, LOW below that altitude. In very steep terrain below 2200 m, isolated naturally triggered glide-snow avalanches up to medium size are possible. Above the treeline there is moderate danger of slab avalanches. Avalanche prone locations focus on gullies in all aspects and wind-loaded steep slopes, increasingly in NW/E/S aspects. Triggering a small-to-medium sized slab avalanche there is possible especially by large additional loading, e.g. by a fall or stamping in the snow.

Snowpack structure

Warmth, rainfall (light drizzle up to 2700 m in places) and the subsequent cooling of the snowpack have led to a re-gain in firmness up to intermediate altitudes, the moistened snowpack is now superficially melt-freeze encrusted. The snowpack is gliding over steep, smooth grass-covered slopes over the ground, however, Above the treeline there are older snowdrifts in gullies and bowls which is now blanketed by a few centimetres of settled new snow (at high altitudes of the Tennen Massif and Gosaukamm, up to 10-20 cm). At higher altitudes in wind-protected terrain the loose old snow can serve as a weak layer beneath the lightly bonded fresh snow which has recently been deposited on top of it.

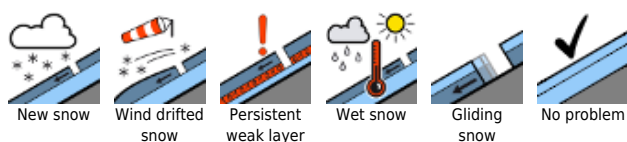
Weather

On Friday, visibility above the valley fog will be adequate. On the Main Tauern Ridge the northerly wind will intensify during the daytime and reach storm strength; in the Northern Alps the wind will disturb only in exposed summit terrain. At 3000 m: -4 degrees; at 1500 m: +2 degrees. Similar weather conditions to Saturday: on Sunday, good visibility above the high fog. On the Main Ridge, stormy NW winds. At 3000 m: -5 degrees; at 2000 m: -2 degrees.

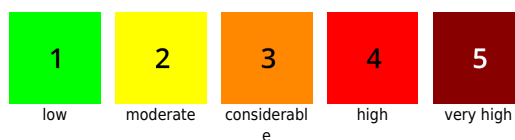
Outlook

Little change.

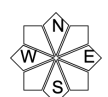
Avalanche problems



Danger ratings

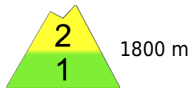


Expositions



17.12.2021

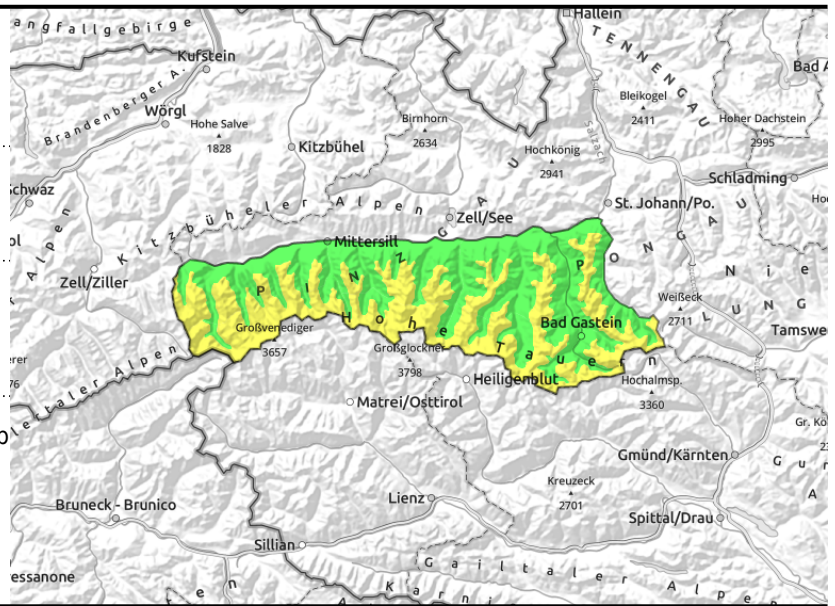
Glocknergruppe Alpenhauptkamm, Glocknergruppe Nord, Großvenedigergruppe Alpenhauptkamm, Goldberggruppe Nord, Goldberggruppe Alpenhauptkamm, Großvenedigergruppe Nord



wide-ranging snowdrifts above timberline, in gullies, steep bowls



glide-snow avalanches on steep grassy slopes below 2300 m



Fresh snowdrifts, esp. in high alpine regions

Danger of avalanches is MODERATE above 1800 m, LOW below that altitude. In very steep terrain below 2200 m, isolated naturally triggered glide-snow avalanches up to medium size are possible. Above the treeline, avalanche prone locations tend to increase with ascending altitude, due to snowdrift accumulations. Avalanche prone locations focus on gullies in all aspects, especially E/S aspects. Triggering a small-to-medium sized slab avalanche there is possible even by minimum additional loading. Transitions zones from shallow to deeper snow can be treacherous; the weak layers in the old snowpack can be triggered and fracture.

Snowpack structure

Warmth, rainfall (light drizzle up to 2700 m in places) and the subsequent cooling of the snowpack have led to a re-gain in firmness up to intermediate altitudes, the moistened snowpack is now superficially melt-freeze encrusted. The snowpack beneath 2300 m is gliding over steep, smooth grass-covered slopes over the ground, however. In high alpine regions, fresh thin snowdrift accumulations are being generated by NW winds. In exposed zones, wind-crusts dominate. In high alpine regions, particularly on shady slopes above about 2200 m, weak soft layers of faceted crystals are weakening the snowpack fundament.

Weather

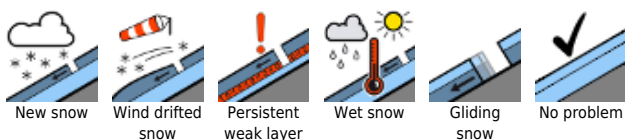
On Friday, little change. Sunshine above the valley fog. On the Main Tauern Ridge, northerly winds will intensify and become stormy. At 3000 m: -4 degrees; at 1500 m: +2 degrees.

Similar conditions on Saturday. Strong winds, storm-strength NW winds on the Main Tauern Ridge. Sunny and good visibility. At 3000 m: -5 degrees; at 2000 m: -2 degrees.

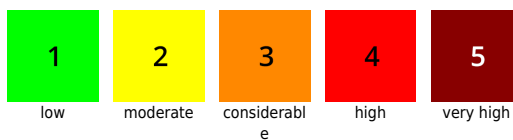
Outlook

Little change on Saturday. Freshly generated trigger-sensitive snowdrifts in high alpine regions remain the main problem. Plus: danger of naturally triggered glide-snow avalanches.

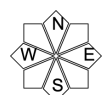
Avalanche problems



Danger ratings



Expositions



17.12.2021

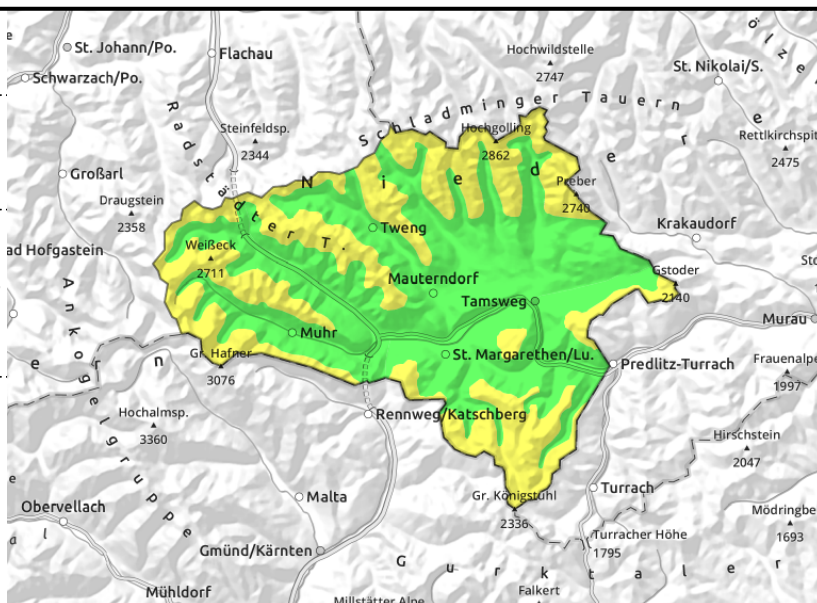
Nockberge, Niedere Tauern Süd, Ankogelgruppe, Muhr



thin, small-area snowdrift masses behind protruberances, exposed terrain windblown, gullies and bowls lots of snow



in shady terrain above 2300 m, triggerable in transitions from shallow to deeper snow



Fresh drifts generated by northerly foehn winds

Danger of avalanches is MODERATE above 1800 m, LOW below that altitude. Avalanche prone locations focus on gullies in all aspects, especially E/S/W aspects. The drifts are still thin, not area-wide, but are prone to triggering. Triggering a small-to-medium sized slab avalanche there is possible even by minimum additional loading in some places.

Snowpack structure

Increasingly strong northerly foehn wind starting on Friday, new in high alpine regions. Potential fracture point: faceted crystals below the thin melt-freeze crust which formed through the higher temperatures and minor rainfall up to high alpine regions at the beginning of the week. Proneness to triggering of older snowdrift masses from last week in all aspects has diminished. Ground-level soft layers of faceted-crystal riddled layers are weakening the fundament on shady slopes above 2300 m.

Weather

On Friday, increasingly stormy northerly foehn wind (50-70 km/hr) amid mostly sunny weather and good visibility. Temperature at 2000 m: -2 degrees.

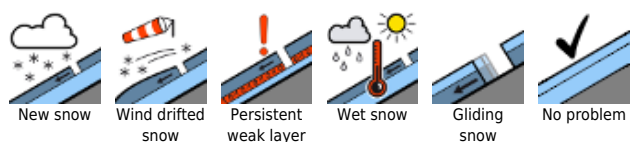
Also on Saturday, sunny and icy-cold northerly foehn wind. Temperatures will barely change.

Outlook

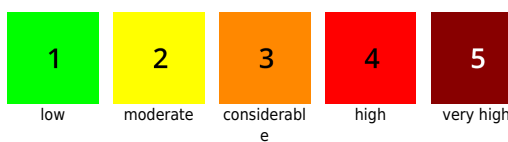
On Saturday, avalanche prone locations due to trigger-sensitive snowdrifts (generated by northerly foehn wind) in expanded southern aspects and in gullies. Depending on the magnitude of the drifts, possible rise in avalanche danger to CONSIDERABLE at high altitudes.

Translated by Jeffrey McCabe, www.creativtrans.com

Avalanche problems



Danger ratings



Expositions

