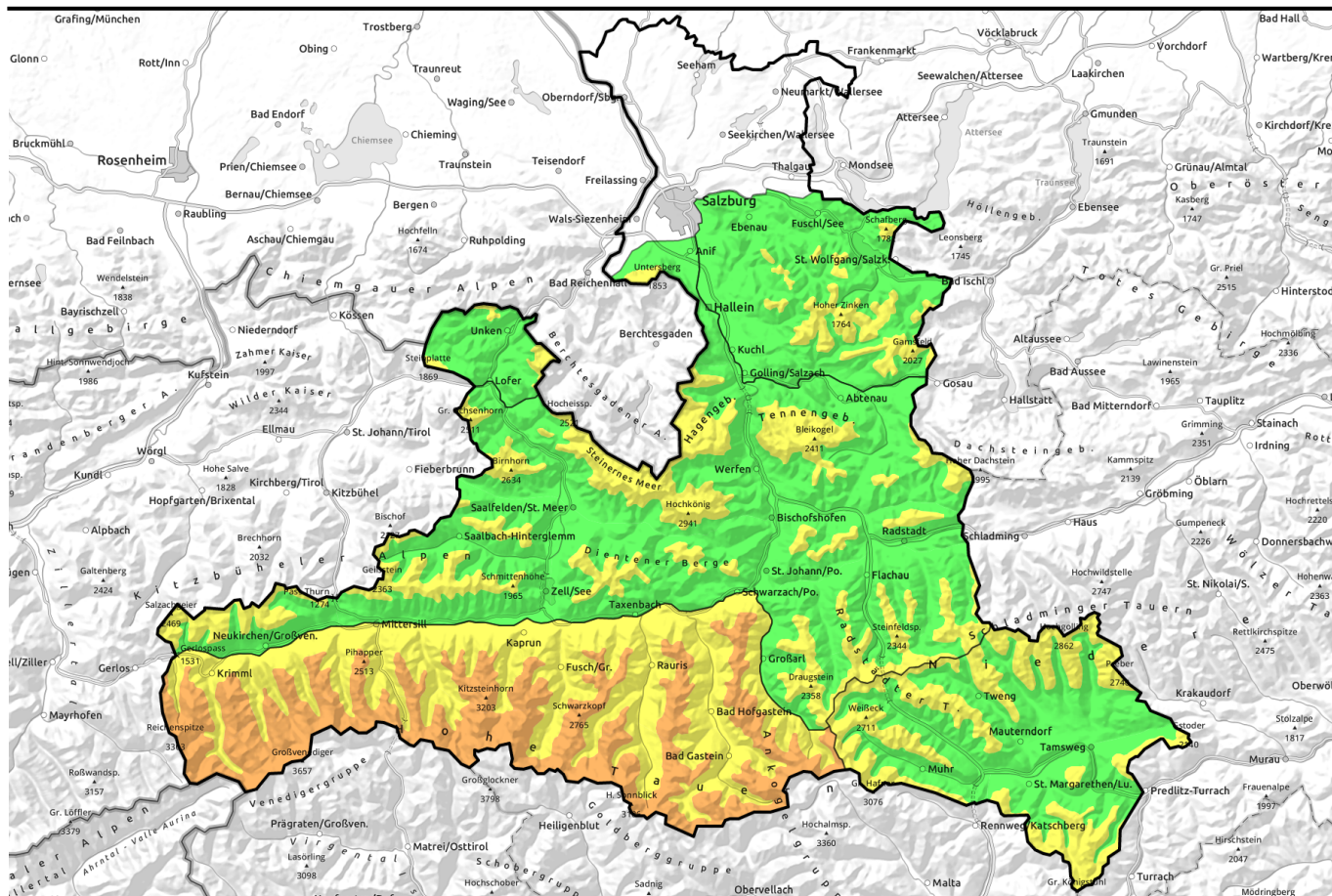


15.12.2021



Increasingly frequent danger zones at high altitudes, especially above 2300 m

	forestline	Osterhorngruppe, Gamsfeldgruppe, Chiemgauer Alpen, Heutal, Reiteralpe		
	forestline	Steinernes Meer, Hochkönig, Hagengebirge, Göllstock, Untersbergstock, Tennengebirge, Gosaukamm, Kitzbüheler Alpen, Glemmtal, Oberpinzgauser Grasberge, Loferer und Leoganger Steinerberge, Dientner Grasberge, Pongauer Grasberge, Niedere Tauern Nord, Niedere Tauern Alpenhauptkamm		
	forestline	Glocknergruppe Alpenhauptkamm, Glocknergruppe Nord, Großvenedigergruppe Alpenhauptkamm, Goldberggruppe Nord, Goldberggruppe Alpenhauptkamm, Großvenedigergruppe Nord		
	forestline	Nockberge, Niedere Tauern Süd, Ankogelgruppe, Muhr		

Avalanche problems



Danger ratings

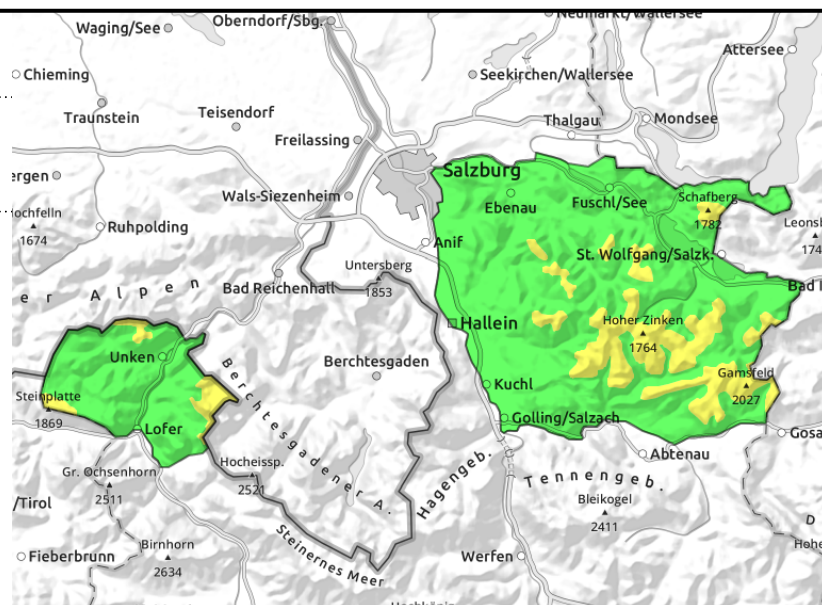
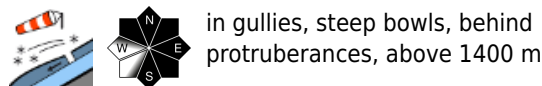


Expositions



15.12.2021

Osterhorngruppe, Gamsfeldgruppe, Chiemgauer Alpen, Heutal, Reiteralpe



Isolated glide-snow avalanches trigger naturally

Danger of avalanches above the timberline is MODERATE, below that altitude danger is low. Avalanche prone locations focus on gullies and wind-loaded steep zones in NW/E/W aspects. Triggering a small-to-medium sized slab avalanche is possible by large additional loading. On very steep slopes, isolated small-to-medium sized glide-snow avalanches can trigger naturally.

Snowpack structure

The snowpack has regained firmness through the rainfall of this month and on the surface is now melt-freeze encrusted. At high altitudes of the Osterhorn Massif there is a small amount of new snow deposited on a wind crust or in wind-protected zones often atop settled old snow. On steep, smooth grass-covered slopes, the snowpack glides over the ground in many places. Above the timberline there are compact older snowdrifts in gullies and bowls.

Weather

On Wednesday, dense cloud will persist to begin with, but little precipitation is anticipated. In the course of the afternoon the clouds will disperse. At all altitudes, temperatures will drop somewhat. At 1500 m: -1 degrees, winds will not disturb.

On Thursday mostly cloudy, only higher peaks might pierce through the sea of fog. A bit colder: at 1500 m: -3 degrees.

Outlook

Little change.

Avalanche problems



Danger ratings



Expositions



15.12.2021

Steinernes Meer, Hochkönig, Hagengebirge, Göllstock, Untersbergstock, Tennengebirge, Gosaukamm, Kitzbüheler Alpen, Glemmtal, Oberpinzgauer Grasberge, Loferer und Leoganger Steinberge, Dientner Grasberge, Pongauer Grasberge, Niedere Tauern Nord, Niedere Tauern Alpenhauptkamm



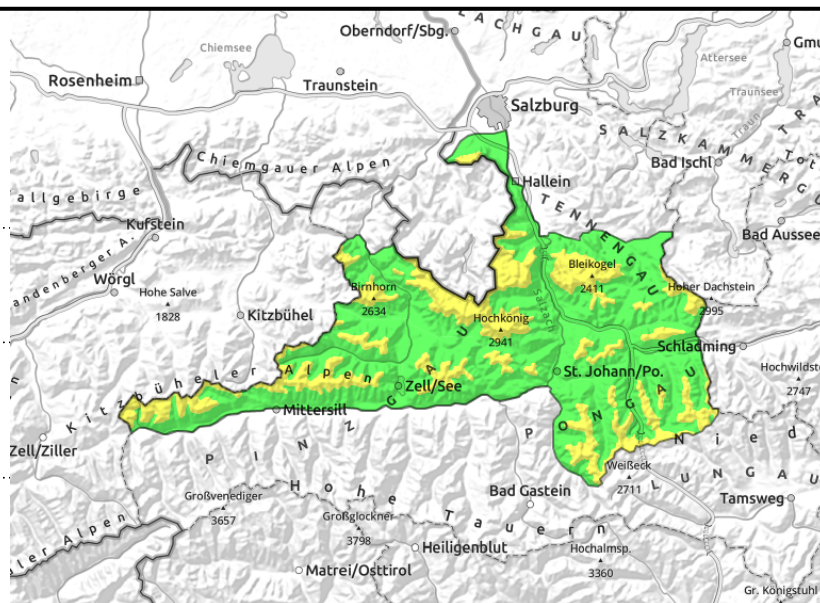
forestline



above timberline, in gullies, steep bowls, snowdrift rims especially treacherous



in extremely steep grassy terrain below 2200 m



Old snowdrifts in gullies

Danger of avalanches above the timberline is MODERATE, below that altitude LOW. On very steep slopes below 2200 m, naturally triggered glide-snow avalanches are possible. Above the timberline slab avalanches can trigger. Avalanche prone locations focus on gullies in all aspects and wind-loaded steep slopes, increasingly frequent in NW/E/S aspects. Triggering a small-to-medium sized slab avalanche is possible there by large additional loading, i.e. through a fall or stamping down the snow.

Snowpack structure

Warmth, rainfall (drizzle up to 2700 m) and subsequent nocturnal cooling have helped the snowpack to regain firmness at high altitudes. The moistened snowpack has a melt-freeze crust on the surface. The snowpack is gliding over smooth, grass-covered slopes. Above the timberline there are older drifts deposited in gullies and bowls which are blanketed a bit of new snow. In higher, wind-protected zones the loose snow can become a weak layer for the slightly-bonded new snow which is deposited on top of it.

Weather

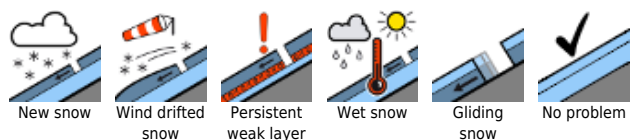
On Wednesday, dense cloud will persist to begin with, but little precipitation is anticipated. In the course of the afternoon the clouds will disperse, some sunshine is expected. Winds in exposed terrain will be moderate, in the Tauern region blowing at 30-40 km/hr from the north. At high altitudes uniform temperatures around -3 degrees.

On Thursday visibility will be good above the valley fog. From Steinberge to Tennen Massif, only the higher peaks will pierce through the fogbanks. In the afternoon, heavy cloud will move in from the north, limiting visibility in the Tauern region. Winds there will be brisk to strong from the north. Temperature: -3 degrees.

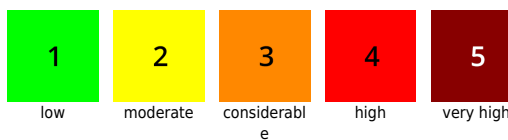
Outlook

Little change.

Avalanche problems



Danger ratings



Expositions



15.12.2021

Glocknergruppe Alpenhauptkamm, Glocknergruppe Nord, Großvenedigergruppe Alpenhauptkamm, Goldberggruppe Nord, Goldberggruppe Alpenhauptkamm, Großvenedigergruppe Nord



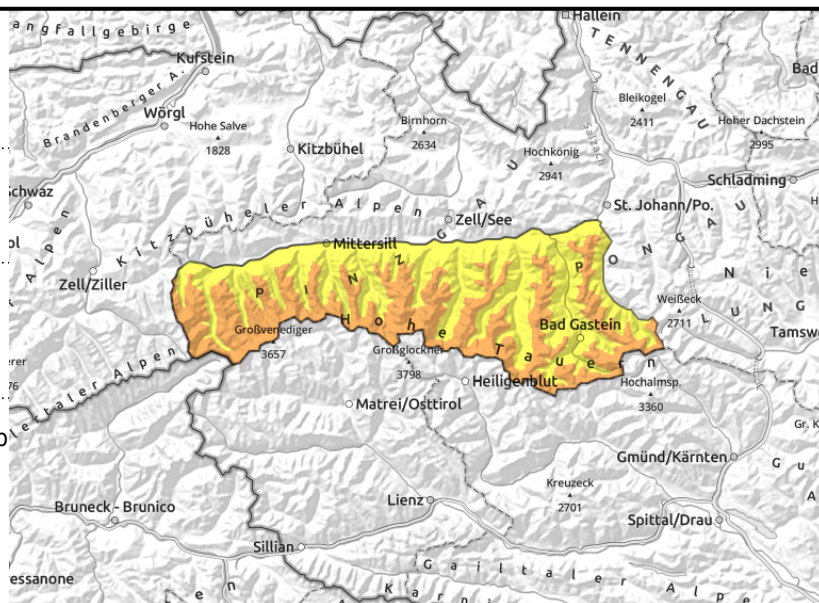
forestline



wide-ranging snowdrifts above timberline, in gullies, steep bowls



glide-snow avalanches on steep grass-covered slopes below 2200 m



Increased trigger-sensitivity of snowdrifts, esp. in high alpine regions

Danger of avalanches above about 2300 m is CONSIDERABLE, below that altitude to the treeline MODERATE. On very steep slopes below 2400 m, naturally triggered glide-snow avalanches are possible. Above the timberline slab avalanches can trigger. Avalanche prone locations focus on gullies in all aspects and wind-loaded steep slope and fresh snowdrifts in E/S aspects. Triggering a small-to-medium sized slab avalanche is possible there even by minimum additional loading. At high altitudes, slab avalanches can in isolated cases grow to large size.

Snowpack structure

Warmth, rainfall and subsequent nocturnal cooling have helped the snowpack to regain firmness at high altitudes. The moistened snowpack has a melt-freeze crust on the surface. Drizzle up to 2700 m on Monday has left a thin ice crust behind. The snowpack is gliding over smooth, grass-covered slopes below 2400 m. Above the timberline there are older drifts deposited in gullies and bowls which are blanketed by snow, in high alpine regions shallow drifts generated by northerly winds. In higher, wind-protected zones the loose snow can become a weak layer for the slightly-bonded new snow which is deposited on top of it. In high alpine regions, particularly on shady slopes above 2200 m, weak, soft layers of faceted crystals are evident in the snowpack fundament.

Weather

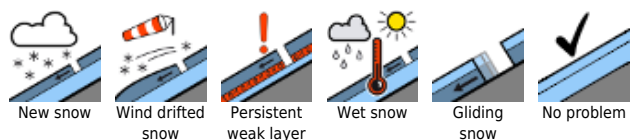
On Wednesday, low lying cloud and fog will initially limit visibility. From Oberpinzgau the visibility will improve towards midday, a bit of sunshine is expected. Winds will be blowing at 30-40 km/hr from the north. At high altitudes: -3 degrees.

On Thursday, visibility above the valley fog will initially be good. In the afternoon, clouds will move in from the north, limiting visibility in the Tauern. Winds will be brisk to strong from the north. Temperature: -3 degrees.

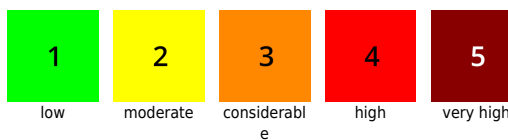
Outlook

Proneness of older snowdrifts triggering will incrementally recede.

Avalanche problems



Danger ratings



Expositions



15.12.2021

Nockberge, Niedere Tauern Süd, Ankogelgruppe, Muhr



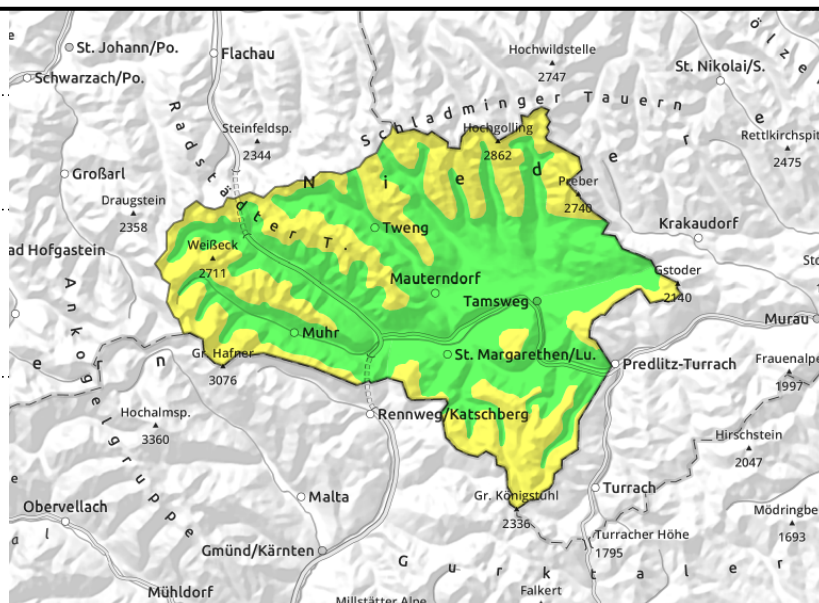
forestline



wide-ranging snowdrifts, in gullies in all aspects, triggerable at rims of snowdrift masses



in shady zones above 2300 m, triggerable in transitions from shallow to deeper snow



NW-wind generated snowdrift accumulations

Danger of avalanches is MODERATE. Avalanche prone locations focus on gullies in all aspects and wind-loaded steep slopes, fresh snowdrifts found increasingly frequent in E/S aspects. The shallow-snow transition zones are especially treacherous. Triggering a small-to-medium sized slab avalanche is possible there by large additional loading, where snow is shallow in transition zones even by minimum additional loading from the drifted zones.

Snowpack structure

The strong winds which frequently changed directions have left their marks on the snowpack, generated snowdrift accumulations in all aspects. Most recently, NW winds and rising temperatures have formed compact snowdrift masses. Snow quality is far better in wind-protected zones, here there is powder. Bonding of individual snowdrifts deteriorates with ascending altitude. Weak faceted layers are evident in the snowpack fundament on shady slopes above 2300 m.

Weather

On Wednesday, dense cloud and fog will persist to begin with. In the course of the afternoon the clouds will disperse, visibility improve and the sun come out. In exposed terrain, esp. in the Tauern regions, a moderate NW wind will be blowing at 30-40 km/hr. At 2000 m: -3 degrees.

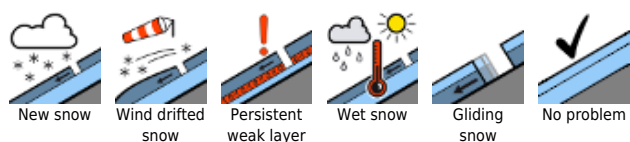
On Thursday, mostly adequate visibility. In the afternoon, heavy cloud cover will move in from the north, possibly limiting visibility in the Tauern region, the Nockberge will remain favourable. Winds at brisk to strong velocity from the north. At 2000 m: -3 degrees.

Outlook

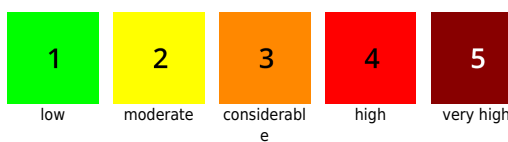
Little change.

Translated by Jeffrey McCabe, www.creativtrans.com

Avalanche problems



Danger ratings



Expositions

