

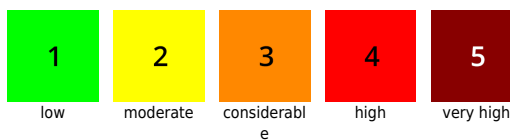
Main problem: rainfall above timberline

	<p>forestline</p>	<p>Osterhorngruppe, Gamsfeldgruppe, Chiemgauer Alpen, Heutal, Reiteralpe</p>	
	<p>1800 m</p>	<p>Steinernes Meer, Hochkönig, Hagengebirge, Göllstock, Untersbergstock, Tennengebirge, Gosaukamm, Kitzbüheler Alpen, Glemmtal, Oberpinzgauer Grasberge, Loferer und Leoganger Steinberge, Dientner Grasberge, Pongauer Grasberge</p>	
	<p>1800 m</p>	<p>Glocknergruppe Alpenhauptkamm, Glocknergruppe Nord, Großvenedigergruppe Alpenhauptkamm, Goldberggruppe Nord, Goldberggruppe Alpenhauptkamm, Niedere Tauern Nord, Niedere Tauern Alpenhauptkamm, Niedere Tauern Süd, Ankogelgruppe, Muhr, Großvenedigergruppe Nord</p>	
	<p>Nockberge</p>		

Avalanche problems



Danger ratings

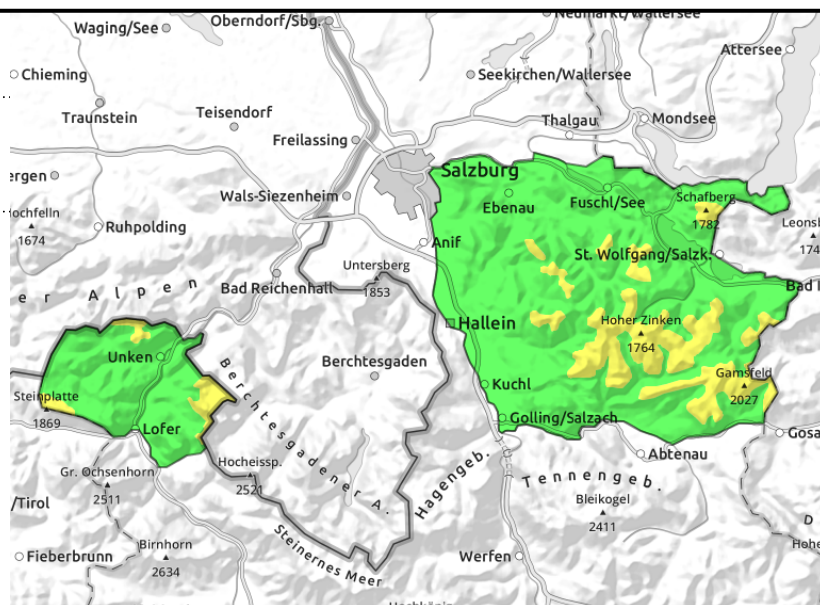
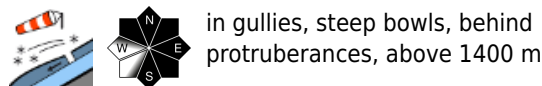


Expositions



14.12.2021

Osterhorngruppe, Gamsfeldgruppe, Chiemgauer Alpen, Heutal, Reiteralpe



Isolated glide-snow avalanches trigger naturally

Danger of avalanches above the timberline is MODERATE, below that altitude danger is low. Avalanche prone locations focus on gullies and wind-loaded steep zones in NW/E/W aspects. Triggering a small-to-medium sized slab avalanche is possible by large additional loading. On very steep slopes, isolated small-to-medium sized glide-snow avalanches can trigger naturally.

Snowpack structure

The snowpack has regained firmness through the rainfall of this month and on the surface is now melt-freeze encrusted. At higher altitudes there is 5-10 cm of new snow deposited on a wind crust or in wind-protected zones often atop settled old snow. On steep, smooth grass-covered slopes, the snowpack glides over the ground in many places. Above the timberline there are compact older snowdrifts in gullies and bowls.

Weather

On Tuesday, visibility will be generally good, accompanied by intermittent sunshine. In the afternoon dense cloud cover will move in, creating diffuse light conditions above the summits, while the summits themselves remain free. Fog will lie over the valleys. Winds (only in summit zones) will be blowing at moderate to strong velocity from the northwest. At 1500 m: +3 degrees. On Wednesday, skies will be predominantly overcast, but hardly any precipitation is anticipated. Temperatures dropping slightly.

Outlook

Little change is anticipated.

Avalanche problems



Danger ratings



Expositions



14.12.2021

Steinernes Meer, Hochkönig, Hagengebirge, Göllstock, Untersbergstock, Tennengebirge, Gosaukamm, Kitzbüheler Alpen, Glemmtal, Oberpinzgauer Grasberge, Loferer und Leoganger Steinberge, Dientner Grasberge, Pongauer Grasberge



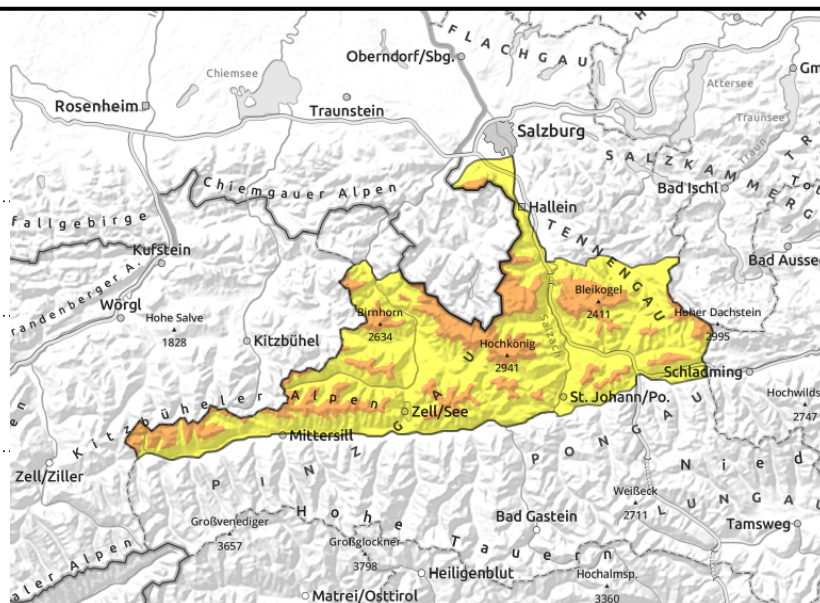
1800 m



above timberline, in gullies, steep bowls, snowdrift rims especially treacherous



in extremely steep grassy terrain below 2200 m



Snowdrift problem above the treeline

Danger of avalanches above about 1800 m is CONSIDERABLE, below that altitude MODERATE. On very steep slopes below 2200 m, naturally triggered glide-snow avalanches are possible. Above the timberline slab avalanches can trigger. Avalanche prone locations focus on gullies in all aspects and wind-loaded steep slopes, increasingly frequent in NW/E/S aspects. Triggering a small-to-medium sized slab avalanche is possible there even by minimum additional loading. At high altitudes, slab avalanches can in isolated cases grow to large size.

Snowpack structure

Warmth, rainfall and subsequent nocturnal cooling have helped the snowpack to regain firmness at high altitudes. The moistened snowpack has a melt-freeze crust on the surface. The snowpack is gliding over smooth, grass-covered slopes. Above the timberline there are older drifts deposited in gullies and bowls which are blanketed by maximum 10 cm of new snow. In higher, wind-protected zones the loose snow can become a weak layer for the slightly-bonded new snow which is deposited on top of it.

Weather

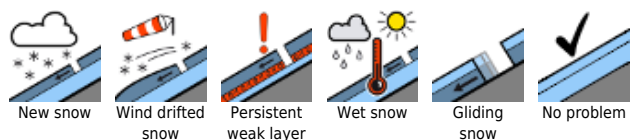
On Tuesday, visibility will be good, intermittent sunshine is expected. In the afternoon, dense cloud cover will move in over summit level and create diffuse light conditions (although the summits themselves will remain free). Fog will lie above the valleys. At high altitudes, a brisk northerly wind will arise, elsewhere winds will be light. At 2000 m: +1 degree; at 3000 m: -4 degrees.

On Wednesday, visibility will initially be limited by clouds and fog. In the afternoon, the visibility will improve and the sun will come out, particularly in the grassy mountains. Winds will not be a disturbance. At 2000 m: -2 degrees; at 3000 m: -4 degrees.

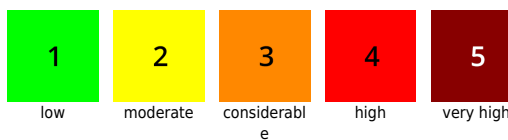
Outlook

Gradually decreasing avalanche danger

Avalanche problems



Danger ratings

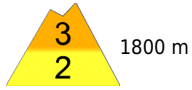


Expositions



14.12.2021

Glocknergruppe Alpenhauptkamm, Glocknergruppe Nord, Großvenedigergruppe Alpenhauptkamm, Goldberggruppe Nord, Goldberggruppe Alpenhauptkamm, Niedere Tauern Nord, Niedere Tauern Alpenhauptkamm, Niedere Tauern Süd, Ankogelgruppe, Muhr, Großvenedigergruppe Nord



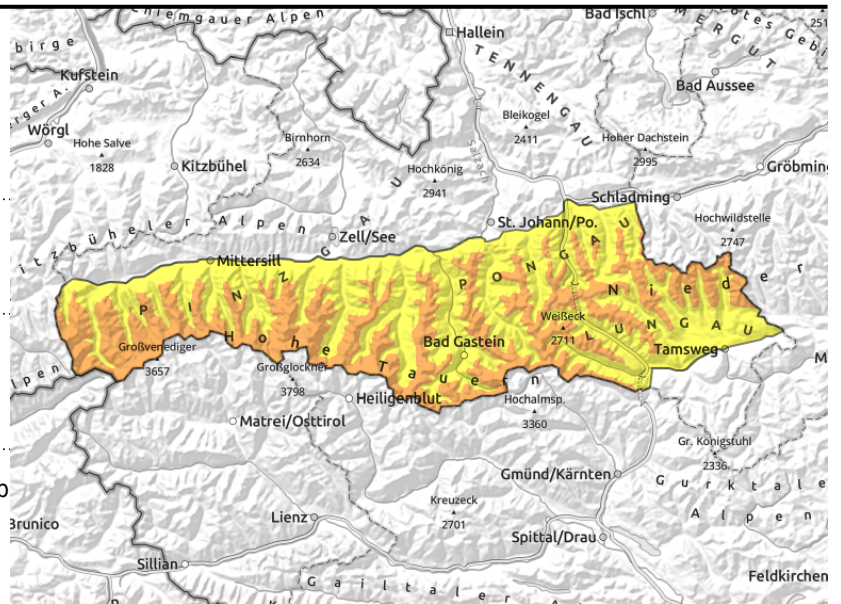
1800 m



wide-ranging snowdrifts above timberline, in gullies, steep bowls



glide-snow avalanches on steep grass-covered slopes below 2200 m



Snowdrift problem above the treeline

Danger of avalanches above about 1800 m is CONSIDERABLE, below that altitude MODERATE. On very steep slopes below 2200 m, naturally triggered glide-snow avalanches are possible. Above the timberline slab avalanches can trigger. Avalanche prone locations focus on gullies in all aspects and wind-loaded steep slopes, increasingly frequent in NW/E/S aspects. Triggering a small-to-medium sized slab avalanche is possible there even by minimum additional loading. At high altitudes, slab avalanches can in isolated cases grow to large size.

Snowpack structure

Warmth, rainfall and subsequent nocturnal cooling have helped the snowpack to regain firmness at high altitudes. The moistened snowpack has a melt-freeze crust on the surface. The snowpack is gliding over smooth, grass-covered slopes. Above the timberline there are older drifts deposited in gullies and bowls which are blanketed by maximum 10 cm of new snow. In higher, wind-protected zones the loose snow can become a weak layer for the slightly-bonded new snow which is deposited on top of it. In high alpine regions, particularly on shady slopes above 2200 m, weak, soft layers of faceted crystals are evident in the snowpack fundament.

Weather

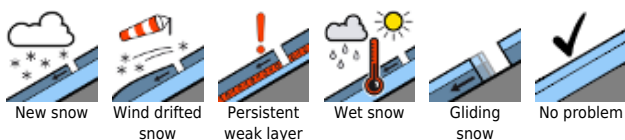
On Tuesday, visibility will be good, intermittent sunshine is expected. In the afternoon, dense cloud cover will move in over summit level and create diffuse light conditions (although the summits themselves will remain free). Fog will lie above the valleys. At high altitudes, a brisk northerly wind will arise, elsewhere winds will be light. At 2000 m: +1 degree; at 3000 m: -4 degrees.

On Wednesday, visibility will initially be limited by clouds and fog. In the afternoon, the visibility will improve and the sun will come out, particularly in the grassy mountains. Winds will not be a disturbance. At 2000 m: 2 degrees; at 3000 m: -4 degrees.

Outlook

Gradually decreasing avalanche danger at high altitudes

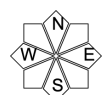
Avalanche problems



Danger ratings



Expositions

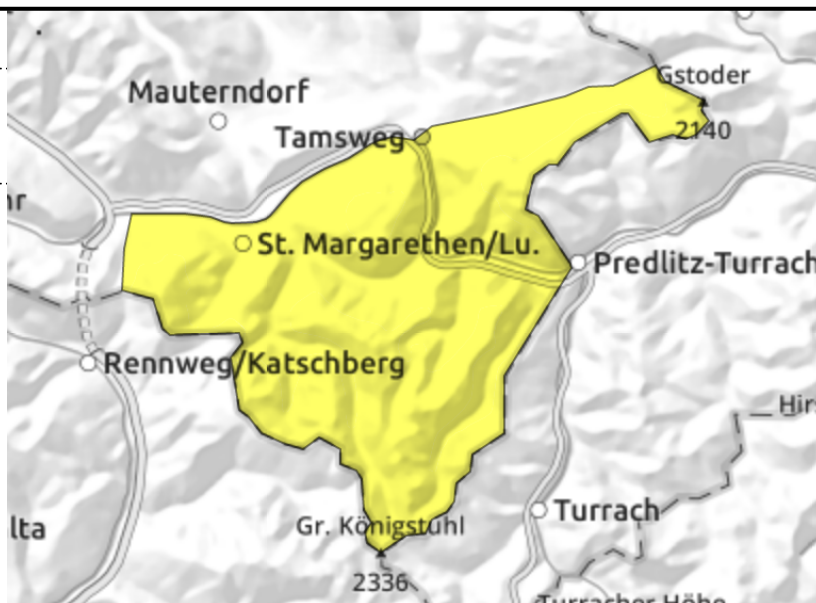


14.12.2021

Nockberge



wide-ranging snowdrifts, in gullies in all aspects, triggerable at rims of snowdrift masses



NW-wind generated snowdrift accumulations

Danger of avalanches is MODERATE. Avalanche prone locations focus on gullies in all aspects and wind-loaded steep slopes, fresh snowdrifts found increasingly frequent in E/S aspects. The shallow-snow transition zones are especially treacherous. Triggering a small-to-medium sized slab avalanche is possible there by large additional loading, where snow is shallow in transition zones even by minimum additional loading from the drifted zones.

Snowpack structure

The strong winds which frequently changed directions have left their marks on the snowpack, generated snowdrift accumulations in all aspects. Most recently, NW winds and rising temperatures have formed compact snowdrift masses. Snow quality is far better in wind-protected zones, here there is powder. Bonding of individual snowdrifts deteriorates with ascending altitude.

Weather

On Tuesday, frequent sunshine, some fogbanks at low altitudes. It will remain free of precipitation. At high altitudes, brisk NW winds will be blowing. At 2000 m: +1 degree.

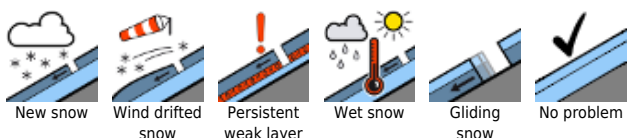
On Wednesday, visibility will initially be limited by clouds and fog. In the afternoon, the visibility will improve and the sun will come out. Winds in exposed terrain, NW winds will be blowing at moderate strength. At 2000 m: -2 degrees.

Outlook

The likelihood of avalanches triggering will gradually diminish.

Translated by Jeffrey McCabe, www.creativtrans.com

Avalanche problems



Danger ratings



Expositions

