

Rainfall up to intermediate altitudes

	Osterhorngruppe, Gamsfeldgruppe, Chiemgauer Alpen, Heutal, Reiteralpe	
	1800 m Steinernes Meer, Hochkönig, Hagengebirge, Göllstock, Untersbergstock, Tennengebirge, Gosaukamm, Kitzbüheler Alpen, Glemmtal, Oberpinzgauer Grasberge, Loferer und Leoganger Steinberge, Dientner Grasberge, Pongauer Grasberge	
	1800 m Glocknergruppe Alpenhauptkamm, Glocknergruppe Nord, Großvenedigergruppe Alpenhauptkamm, Goldberggruppe Nord, Goldberggruppe Alpenhauptkamm, Niedere Tauern Nord, Niedere Tauern Alpenhauptkamm, Niedere Tauern Süd, Ankogelgruppe, Muhr, Großvenedigergruppe Nord	
	Nockberge	

Avalanche problems



Danger ratings



Expositions



13.12.2021

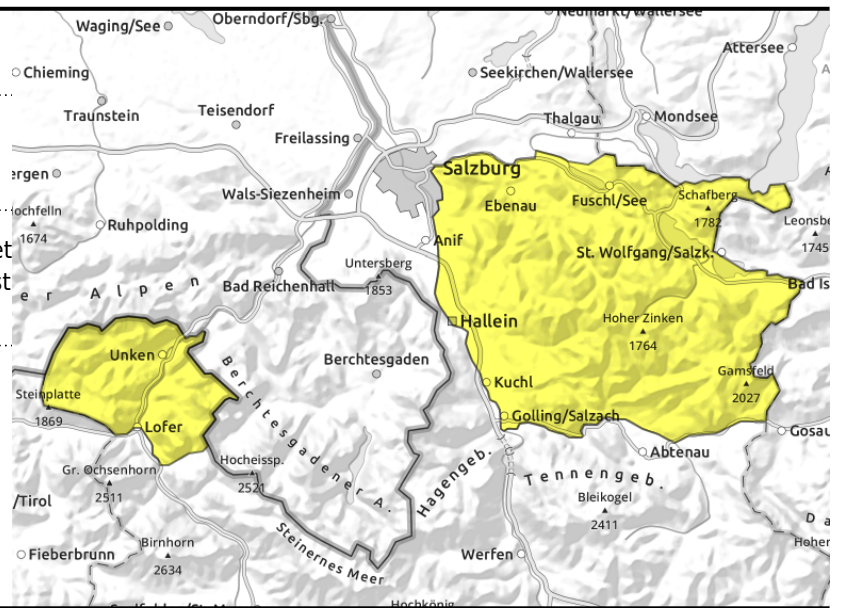
Osterhorngruppe, Gamsfeldgruppe, Chiemgauer Alpen, Heutal, Reiteralpe



loss of firmness due to rain, wet loose-snow avalanches in forest zones



in gullies, steep bowls, behind protruberances, above 1400 m



Snowpack firmness gone due to rain. Intensified gliding snow.

Endangerment from avalanches is MODERATE from the start and will increase within this danger level as precipitation continues during the day. In very steep zones (also forests) naturally triggered small-to-medium wet loose-snow avalanches and glide-snow avalanches are possible. Above about 1400 m, moreover, there is MODERATE danger of slab avalanches. Avalanche prone locations focus on gullies and wind-loaded steep slopes in NW/E/S aspects. Triggering a small-to-medium slab avalanche is possible even by minimum additional loading.

Snowpack structure

The snowpack is being moistened superficially, forfeits its firmness thereby. At low altitudes it is already thoroughly wet and is gliding over smooth ground. Above the timberline there are snowdrift accumulations in gullies and bowls, in exposed terrain there are mostly wind-crusts. In high-altitude wind-protected zones, loose old snow is a potential weak layer for the bonded snowfall which is deposited on top of it.

Weather

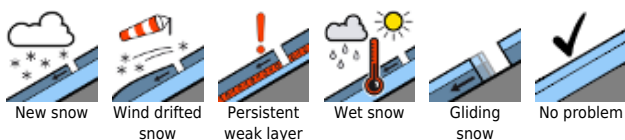
On Monday, visibility will be limited by clouds, fog, rain and snow. The snowfall level will ascend during the daytime, briefly reaching nearly 2000 m. At 1500 m, +1 degree. The strong NW winds will ease during the day.

On Tuesday it will frequently be sunny. At low altitudes, foggy. It will be free of precipitation.

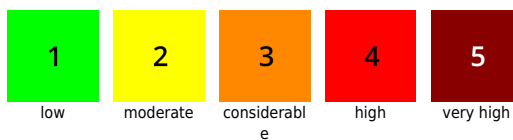
Outlook

At high altitudes, MODERATE avalanche danger will continue. Elsewhere, danger will diminish.

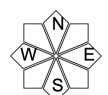
Avalanche problems



Danger ratings



Expositions



13.12.2021

Steinernes Meer, Hochkönig, Hagengebirge, Göllstock, Untersbergstock, Tennengebirge, Gosaukamm, Kitzbüheler Alpen, Glemmtal, Oberpinzgauer Grasberge, Loferer und Leoganger Steinberge, Dientner Grasberge, Pongauer Grasberge



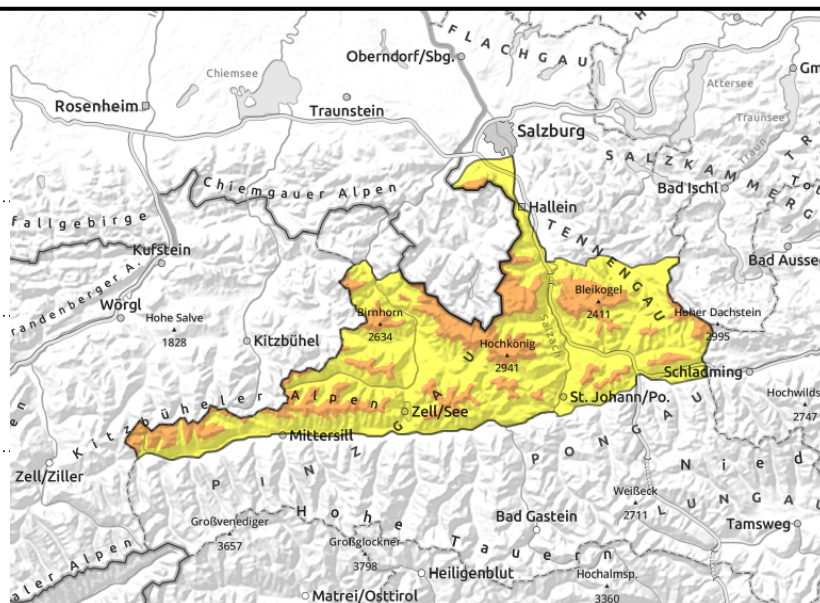
1800 m



as rain continues wet-snow avalanches from forest zones below 1500 m



above treeline in gullies and steep bowls, triggerable at snowdrift rims



Snowdrift problem above timberline

Above 1800 m, danger of avalanches is CONSIDERABLE, below that altitude MODERATE. In very steep areas (including forests) naturally triggered small-to-medium wet loose-snow avalanches and glide-snow avalanches are possible. Above the timberline there is also the danger of slab avalanches triggering. Danger zones focus on gullies in all aspects and wind-loaded steep slopes (fresh drifts being deposited mostly in E/S aspects). Triggering a small-to-medium sized slab avalanche is possible even be minimum additional loading. At high altitudes, slab avalanches can in isolated cases grow to large size.

Snowpack structure

The snowpack is being moistened superficially, forfeits its firmness thereby. At low altitudes it is already thoroughly wet and is gliding over smooth ground. Above the timberline there are snowdrift accumulations in gullies and bowls, in exposed terrain there are mostly wind-crusts. In high-altitude wind-protected zones, loose old snow is a potential weak layer for the bonded snowfall which is deposited on top of it.

Weather

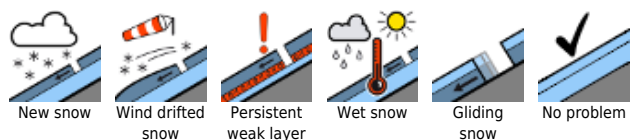
On Monday, visibility will be limited by clouds, fog, rain and snow. The snowfall level will ascend during the daytime, briefly reaching nearly 2000 m. At 1500 m, +1 degree. The strong NW winds will ease during the day.

On Tuesday it will frequently be sunny. At low altitudes, foggy. It will be free of precipitation. Brisk NW winds at high altitudes.

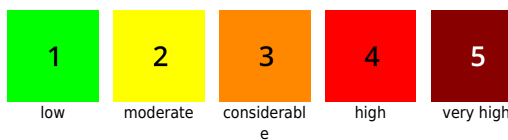
Outlook

Below the timberline, avalanche danger is diminishing. At high altitudes, CONSIDERABLE danger due to snowdrifts also on Tuesday.

Avalanche problems



Danger ratings



Expositions



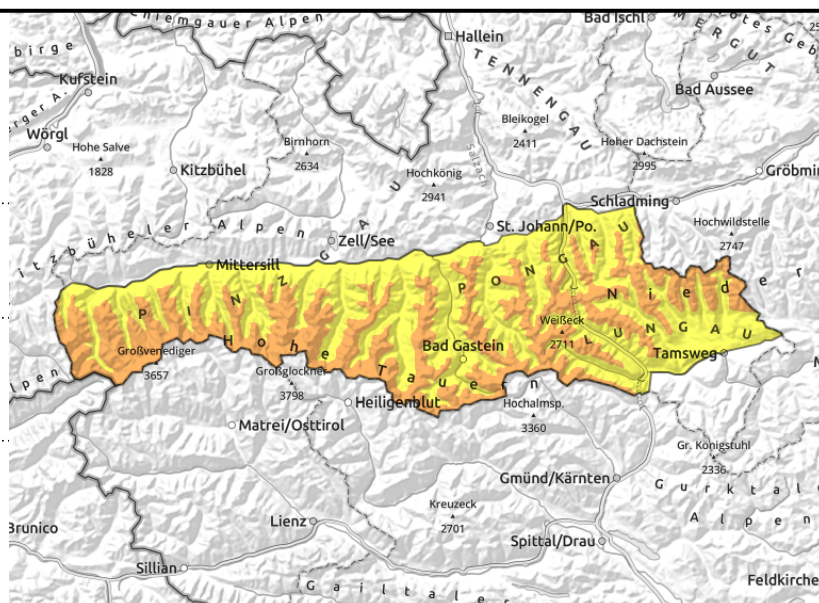
13.12.2021

Glocknergruppe Alpenhauptkamm, Glocknergruppe Nord, Großvenedigergruppe Alpenhauptkamm, Goldberggruppe Nord, Goldberggruppe Alpenhauptkamm, Niedere Tauern Nord, Niedere Tauern Alpenhauptkamm, Niedere Tauern Süd, Ankogelgruppe, Muhr, Großvenedigergruppe Nord



far-reaching snowdrifts, exposed terrain is windblown

more naturally triggered avalanches as rain continues, wet loose-snow avalanches from forests, glide-snow avalanches on steep grassy slopes below 2200 m



Snowdrift problem above timberline

Above 1800 m, danger of avalanches is CONSIDERABLE, below that altitude MODERATE. In very steep areas (including forests) naturally triggered small-to-medium wet loose-snow avalanches and glide-snow avalanches are possible. Above the timberline there is also the danger of slab avalanches triggering. Danger zones focus on gullies in all aspects and wind-loaded steep slopes (fresh drifts being deposited mostly in E/S aspects). Triggering a small-to-medium sized slab avalanche is possible even be minimum additional loading. At high altitudes, slab avalanches can in isolated cases grow to large size.

Snowpack structure

The snowpack is being moistened superficially, forfeits its firmness thereby. At low altitudes it is already thoroughly wet and is gliding over smooth ground. Above the timberline there are snowdrift accumulations in gullies and bowls, in exposed terrain there are mostly wind-crusts. In high-altitude wind-protected zones, loose old snow is a potential weak layer for the bonded snowfall which is deposited on top of it. In high alpine regions, particularly on shady slopes above 2200 m, soft layers of faceted crystals are weakening the snowpack fundament.

Weather

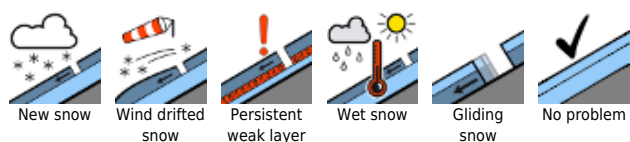
On Monday, visibility will be limited by clouds, fog, rain and snow. The snowfall level will ascend during the daytime, briefly reaching nearly 2000 m. At high altitudes, 10-20 cm of new snow is anticipated. At 2000 m, 0 degree, at 3000 m -5 degrees. The strong NW winds will ease during the day, but at high altitudes still be blowing at 40-60 km/hr.

On Tuesday it will frequently be sunny. At low altitudes, fogbanks are expected. Brisk NW winds at high altitude.

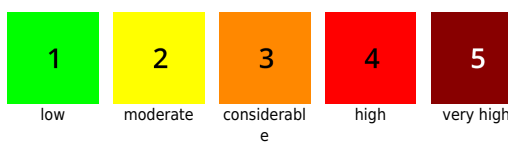
Outlook

Below the timberline, avalanche danger is diminishing. At high altitudes, CONSIDERABLE danger due to snowdrifts also on Tuesday.

Avalanche problems



Danger ratings



Expositions

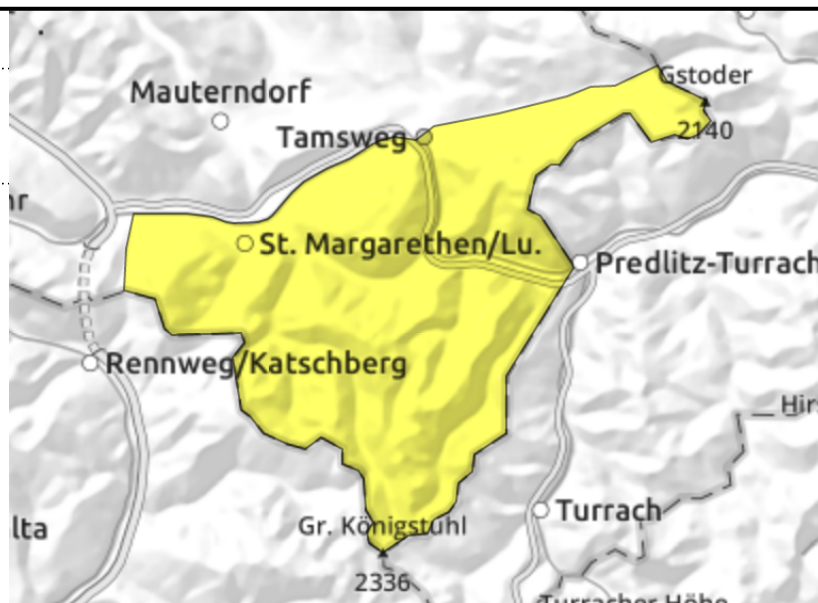


13.12.2021

Nockberge



far-reaching snowdrifts, in gullies of all aspects, triggerable at rims of the snowdrift masses



Fresh snowdrifts from NW winds

Avalanche danger is MODERATE. Avalanche prone locations focus on gullies in all aspects and wind-loaded steep slopes (fresh drifts being deposited mostly in E/S aspects). Shallow-snow transition zones are especially treacherous. Triggering a small-to-medium sized slab avalanche is possible even be minimum additional loading in some places.

Snowpack structure

Strong winds which frequently shifted direction have left their mark on the snowpack, generated snowdrifts in all aspects, most recently transported by NW winds. Snow quality is much better in wind-protected zones, where there is settled powder. Up to intermediate altitudes the snowpack is superficially moist. Bonding of individual drifts worsens with ascending altitude.

Weather

On Monday, visibility will be limited by low lying clouds to start with, later the clouds will disperse amid strong NW winds (30-50 km/hr). At 2000 m: -1 degree. Minor precipitation at most.

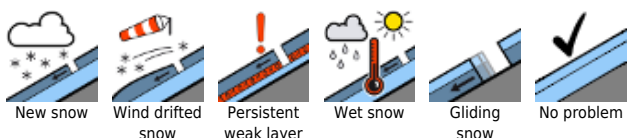
On Tuesday, frequent sunshine, fog in some low-altitude areas. No precipitation. Brisk NW winds at high altitudes.

Outlook

No significant change is anticipated.

Translated by Jeffrey McCabe, www.creativtrans.com

Avalanche problems



Danger ratings



Expositions

