

## Main Problem: snowdrifts

	forestline Osterhorngruppe, Gamsfeldgruppe	
	forestline Niedere Tauern Alpenhauptkamm, Niedere Tauern Süd, Ankogelgruppe, Muhr, Goldberggruppe Alpenhauptkamm, Glocknergruppe Alpenhauptkamm, Großvenedigergruppe Alpenhauptkamm, Nockberge	
	forestline Tennengebirge, Gosaukamm, Steinernes Meer, Hochkönig, Hagengebirge, Göllstock, Dientner Grasberge, Loferer und Leoganger Steinberge, Chiemgauer Alpen, Heutal, Reiteralpe, Kitzbüheler Alpen, Glemmtal, Oberpinzgauer Grasberge, Pongauer Grasberge, Untersbergstock, Niedere Tauern Nord, Goldberggruppe Nord, Glocknergruppe Nord, Großvenedigergruppe Nord	

### Avalanche problems



### Danger ratings

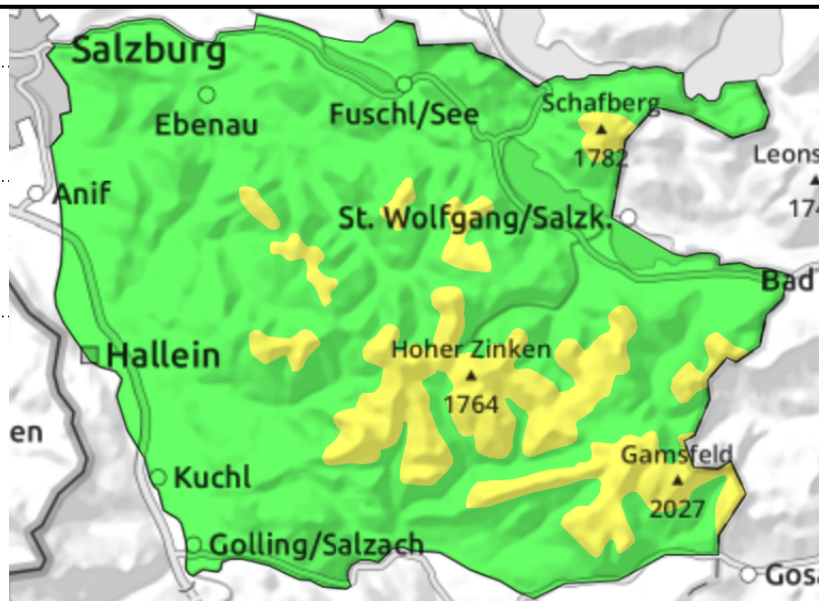
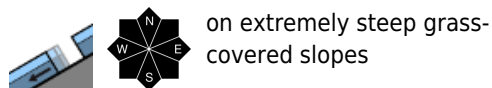
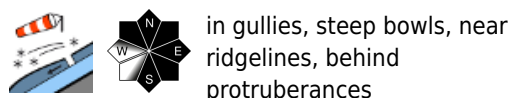


### Expositions



**12.12.2021**

**Osterhorngruppe, Gamsfeldgruppe**



**Caution urged towards drifts above timberline**

Avalanche danger depends on wind influence. Above the treeline: MODERATE.

Avalanche prone locations are concentrated on leeward ridgeline steep slopes in NW/E/S aspects and in steep gullies. Danger zones become more frequent with ascending altitude above the treeline. Triggering is especially possible by large additional loading (a group, a fall), and in transitions from shallow to deep snow a triggering is possible even by the weight of one sole person. Small-to-medium sized slab avalanches are possible.

On extremely steep grass-covered slopes, small glide-snow avalanches are releasing.

**Snowpack structure**

Where winds do not reach, fine powder lies atop a hardened snowbase. At low altitudes the snow is sticky or slightly moist. With wind impact (on Friday southerly, on Saturday northwesterly again) the snowdrifts and wind-crusts will predominate. The old snowpack is compact.

**Weather**

On Sunday, visibility will improve during the morning, some intermittent sunshine is expected over midday. Towards evening cloud cover will move in. Winds will remain mostly light. At 1500 m: -5 degrees.

On Monday temperatures will be noticeably higher due to a warm front. Rainfall is expected to extend gradually up to nearly 2000 m. Visibility will be poor.

**Outlook**

On Monday, higher temperatures and rainfall, helping the snowpack to settle measurably.

**Avalanche problems**



**Danger ratings**

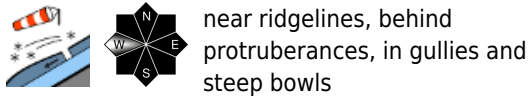


**Expositions**

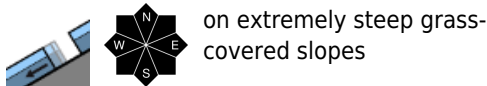


**12.12.2021**

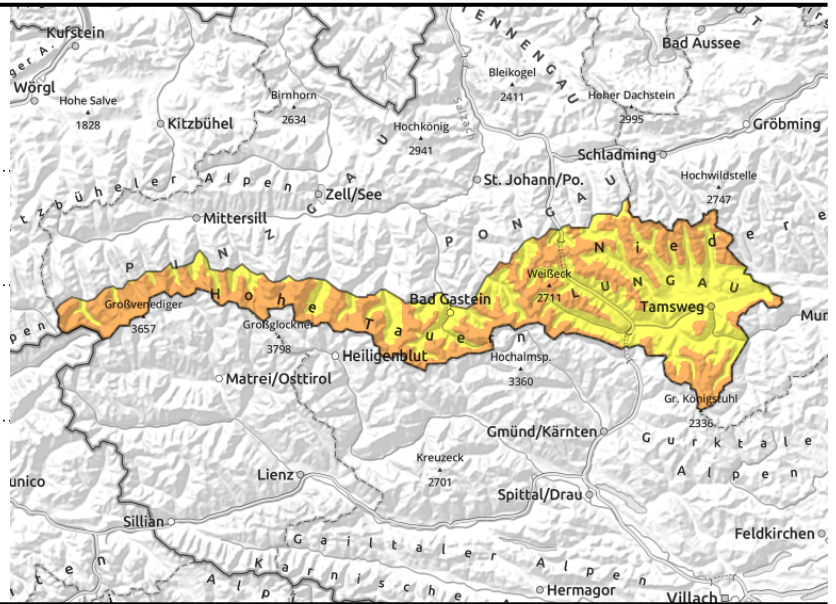
**Niedere Tauern Alpenhauptkamm, Niedere Tauern Süd, Ankogelgruppe, Muhr, Goldberggruppe Alpenhauptkamm, Glocknergruppe Alpenhauptkamm, Großvenedigergruppe Alpenhauptkamm, Nockberge**



near ridgelines, behind protruberances, in gullies and steep bowls



on extremely steep grass-covered slopes



## Avoid snowdrifts whenever possible

Avalanche danger above the timberline is CONSIDERABLE, below that altitude MODERATE. The major danger: fresh snowdrifts, not always adequately bonded with the snowpack beneath them. Most avalanche prone locations are in N/E aspects, with ascending altitude also in southern aspects. Triggering a medium-to-large slab avalanche is possible even by the weight of one single person. At intermediate and low altitudes, small glide-snow avalanches are releasing on extremely steep grassy slopes.

## Snowpack structure

Winds have left marked effects on the snowpack, generated numerous snowdrift accumulations. Snow quality is much better in wind-protected terrain. Sink-in depths about 30 cm. Bonding of individual snowdrift masses worsens with ascending altitude.

Above 2200 m, particularly in northern aspects beneath the melt-freeze crust from mid-November there are soft, weak layers (persistent weak layer) which can be triggered by large additional loading, e.g. from a superficial triggering.

## Weather

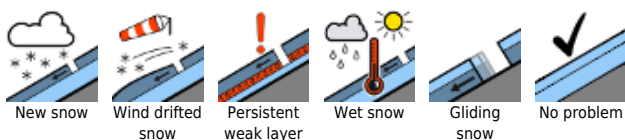
On Sunday, visibility will improve during the morning, some intermittent sunshine is expected in the afternoon. Northerly winds will be blowing at strong to storm strength. Temperatures will rise at all altitudes. At midday at 2000 m: -7 degrees, at 3000 m: -10 degrees.

On Monday temperatures will be noticeably higher due to a warm front passing through. Rainfall is expected to extend gradually up to nearly 2000 m.

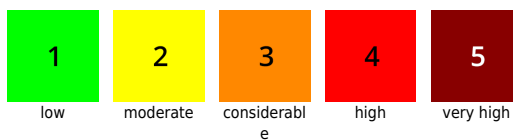
## Outlook

On Monday, higher temperatures and rainfall, helping the snowpack to settle measurably. This settling can be accompanied by naturally triggered avalanches: glide-snow avalanches will release increasingly frequently at low and intermediate altitudes, isolated slab avalanches in heavily wind-loaded high altitude zones.

### Avalanche problems



### Danger ratings

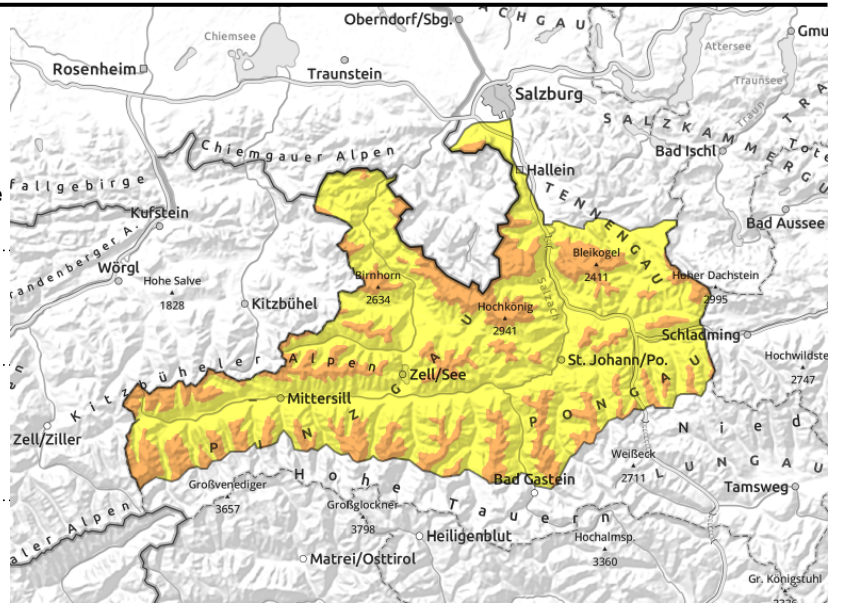


### Expositions



**12.12.2021**

**Tennengebirge, Gosaukamm, Steinernes Meer, Hochkönig, Hagengebirge, Göllstock, Dientner Grasberge, Loferer und Leoganger Steinberge, Chiemgauer Alpen, Heutal, Reiteralpe, Kitzbüheler Alpen, Glemmtal, Oberpinzgauer Grasberge, Pongauer Grasberge, Untersbergstock, Niedere Tauern Nord, Goldberggruppe Nord, Glocknergruppe Nord, Großvenedigergruppe Nord**



forestline



near ridgelines, behind protruberances, in gullies and steep bowls



on extremely steep grass-covered slopes

## Fresh and older snowdrifts

Avalanche danger above the timberline is **CONSIDERABLE**, below that altitude **MODERATE**.

Avalanche prone locations are concentrated on leeward ridgeline steep slopes in NW/E/S aspects and in steep gullies. Danger zones become more frequent with ascending altitude above the treeline.

Triggering is possible by minimum additional loading, i.e. the weight of one sole person, particularly in transitions from shallow to deep snow and behind protruberances in the landscape. Small-to-medium sized slab avalanches are possible.

On extremely steep grass-covered slopes, small glide-snow avalanches are releasing.

## Snowpack structure

Where winds do not reach, fine powder lies atop a hardened snowbase, in wind-exposed terrain the snowdrifts and wind-crusts dominate. On Friday strong southerly winds generated new drifts on north-facing slopes. On Saturday the NW winds deposited drifts on east-facing slopes.

## Weather

On Sunday, visibility will improve during the morning, some intermittent sunshine is expected over midday. Towards evening cloud cover will move in. Brisk NW winds at summit levels and on ridges, elsewhere the winds will remain light. At 2000 m: -9 to -4 degrees.

On Monday temperatures rainfall is expected to extend gradually up to nearly 2000 m. Visibility will be poor.

## Outlook

On Monday, higher temperatures and rainfall, helping the snowpack to settle measurably.

Translated by Jeffrey McCabe, [www.creativtrans.com](http://www.creativtrans.com)

### Avalanche problems



New snow



Wind drifted snow



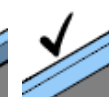
Persistent weak layer



Wet snow



Gliding snow



No problem

### Danger ratings



1

low



2

moderate



3

considerable



4

high



5

very high

### Expositions

