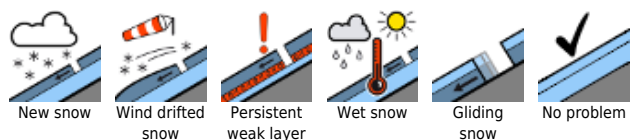


## Caution: fresh snowdrifts

	forestline	Osterhorngruppe, Gamsfeldgruppe	 
	forestline	Großvenedigergruppe Nord, Glocknergruppe Nord, Niedere Tauern Alpenhauptkamm, Niedere Tauern Süd, Ankogelgruppe, Muhr, Goldberggruppe Alpenhauptkamm, Glocknergruppe Alpenhauptkamm, Großvenedigergruppe Alpenhauptkamm, Goldberggruppe Nord, Niedere Tauern Nord	   
	forestline	Tennengebirge, Gosaukamm, Steinernes Meer, Hochkönig, Hagengebirge, Göllstock, Dientner Grasberge, Loferer und Leoganger Steinberge, Chiemgauer Alpen, Heutal, Reiteralpe, Kitzbüheler Alpen, Glemmtal, Oberpinzgauer Grasberge, Pongauer Grasberge, Untersbergstock	 
	forestline	Nockberge	 

### Avalanche problems



### Danger ratings

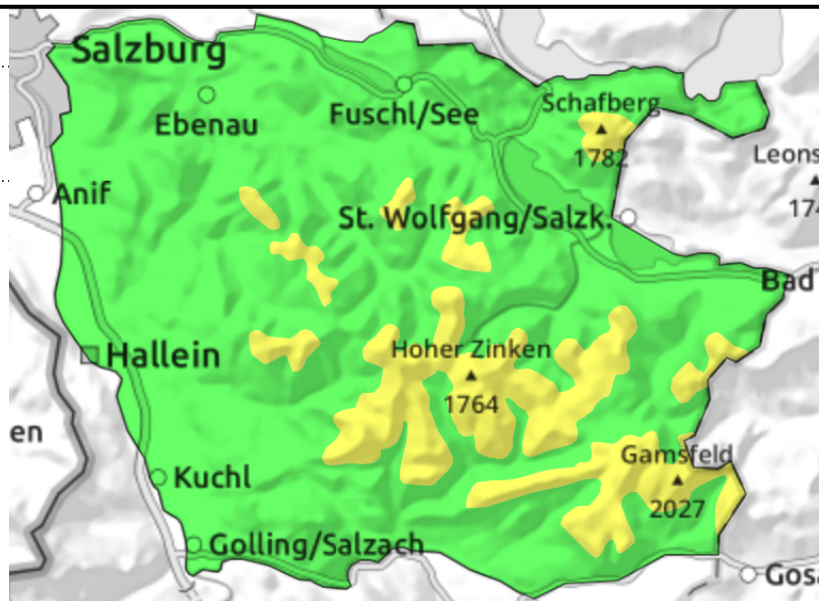
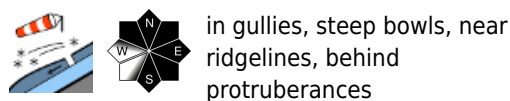


### Expositions



**11.12.2021**

**Osterhorngruppe, Gamsfeldgruppe**



**Caution urged towards drifts above timberline**

Avalanche danger depends on wind influence. Above the treeline: MODERATE.

Avalanche prone locations are concentrated on leeward ridgeline steep slopes in NW/E/S aspects and in steep gullies. Danger zones become more frequent with ascending altitude above the treeline. Triggering is especially possible by large additional loading (a group, a fall), and in transitions from shallow to deep snow a triggering is possible even by the weight of one sole person. Small-to-medium sized slab avalanches are possible.

**Snowpack structure**

Where winds do not reach, fine powder lies atop a hardened snowbase. With wind impact (on Friday southerly, on Saturday northwesterly again) the snowdrifts and wind-crusts will predominate. The old snowpack is relatively compact, in the classic December backcountry touring regions there are no pronounced or relevant weak layers evident.

**Weather**

On Saturday the peaks will frequently be shrouded in cloud, visibility will often be limited by snowfall (10 cm fresh snow anticipated). Brisk W/NW winds will be blowing. Temperature at 1500 m: -6 degrees.

On Sunday, visibility will improve in the morning, intermittent sunshine expected over the midday hours. Towards evening cloud cover will move in. Winds will remain mostly light. At 1500 m: -5 degrees.

**Outlook**

Little change in the avalanche situation on Sunday.

**Avalanche problems**



**Danger ratings**

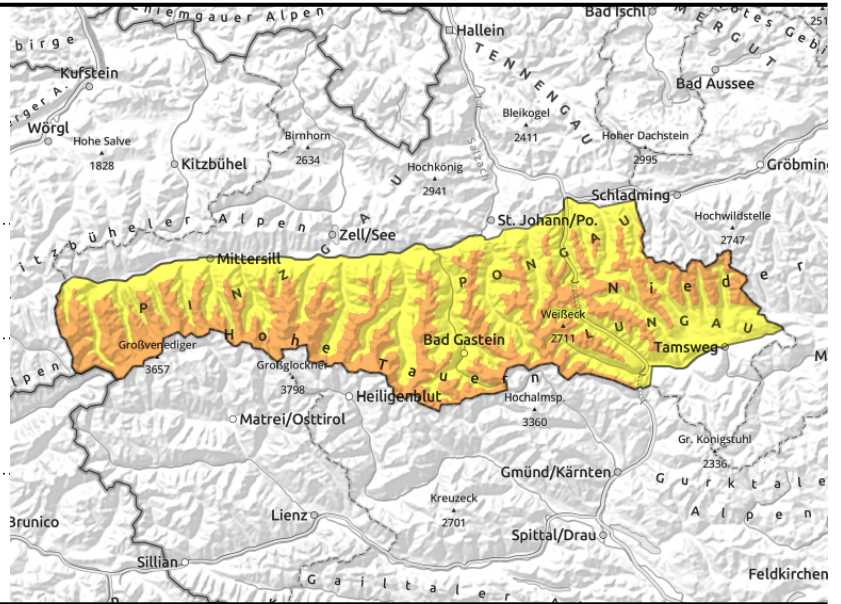


**Expositions**



**11.12.2021**

**Großvenedigergruppe Nord, Glocknergruppe Nord, Niedere Tauern Alpenhauptkamm, Niedere Tauern Süd, Ankogelgruppe, Muhr, Goldberggruppe Alpenhauptkamm, Glocknergruppe Alpenhauptkamm, Großvenedigergruppe Alpenhauptkamm, Goldberggruppe Nord, Niedere Tauern Nord**



forestline



near ridgelines, behind protruberances, in gullies and steep bowls



high alpine regions and shady zones above 2200 m

## Foehn winds blew on Friday, on Saturday strong northerly winds again

Avalanche danger above the timberline is CONSIDERABLE, below that altitude MODERATE. Wind impact and unfavourable layering in the old snow have created many danger zones, their number and their spread increasing with ascending altitude. Triggering a medium-to-large slab avalanche is possible even by the weight of one single person.

At intermediate and low altitudes, also naturally triggered glide-snow avalanches are possible on steep grass-covered slopes.

### Snowpack structure

Exposed terrain is often utterly windblown, gullies and bowls are filled to the brim with drifts. Wind-crusts often dominate. Snow quality is much better in wind-protected terrain. Bonding of individual snowdrift masses worsens with ascending altitude.

Above 2200 m, particularly in northern aspects beneath the melt-freeze crust from mid-November there are soft, weak layers (persistent weak layer) which can be triggered by large additional loading, e.g. from a superficial triggering.

### Weather

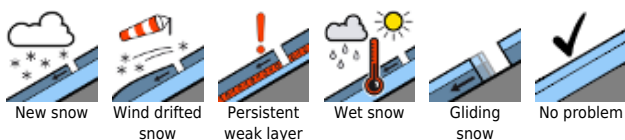
On Saturday the peaks will frequently be shrouded in cloud, visibility will often be limited by snowfall (10 cm fresh snow). Brisk W/NW winds will be blowing. Temperature at 2000 m: -8 degrees; at 3000 m: -13 degrees..

On Sunday, visibility will improve in the morning, intermittent sunshine expected over the midday hours. Towards evening cloud cover will move in. Winds will remain mostly light. At 2000 m: -7 degrees; at 3000 m: -10 degrees.

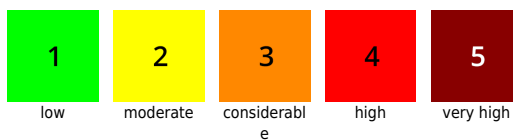
### Outlook

Little change in the avalanche situation on Sunday.

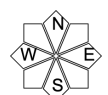
#### Avalanche problems



#### Danger ratings

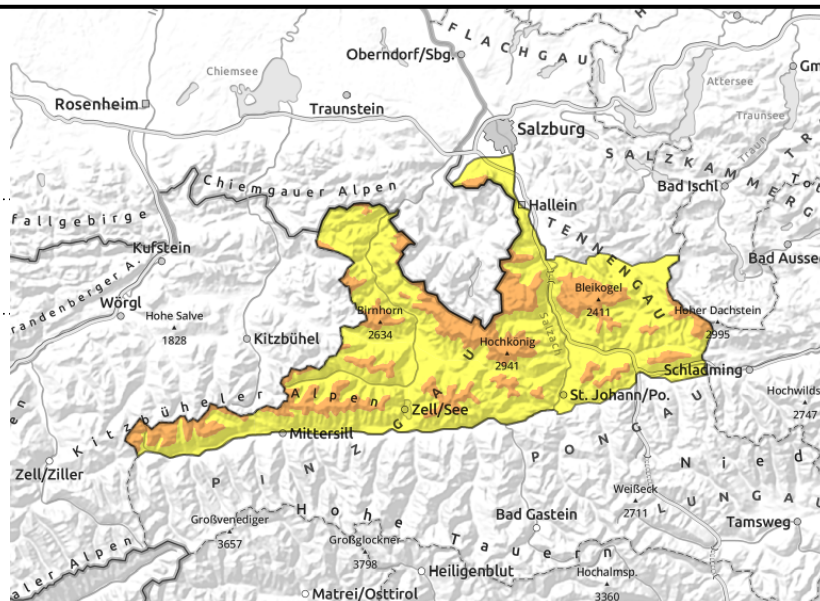
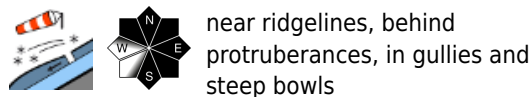


#### Expositions



**11.12.2021**

**Tennengebirge, Gosaukamm, Steinernes Meer, Hochkönig, Hagengebirge, Göllstock, Dientner Grasberge, Loferer und Leoganger Steinberge, Chiemgauer Alpen, Heutal, Reiteralpe, Kitzbüheler Alpen, Glemmtal, Oberpinzgauer Grasberge, Pongauer Grasberge, Untersbergstock**



## Fresh and older snowdrifts

Avalanche danger depends on wind influence. Above the treeline: CONSIDERABLE, below that altitude MODERATE.

Avalanche prone locations are concentrated on leeward ridgeline steep slopes in NW/E/S aspects and in steep gullies. Danger zones rapidly become more frequent with ascending altitude above the treeline. Triggering is especially possible by large additional loading (a group, a fall), and in transitions from shallow to deep snow a triggering is possible even by the weight of one sole person. Small-to-medium sized slab avalanches predominate.

Isolated small-sized glide-snow avalanches are possible on steep hillsides.

## Snowpack structure

Winds are ongoingly generating fresh snowdrift accumulations. On Friday, strong southerly winds deposited drifts on north-facing slopes. On Saturday the snow will be blown to east-facing slopes by northerly winds. Exposed terrain is windblown, dominated by melt-freeze crusts and drifted masses. Snow quality is far better in wind-protected terrain; that is where to enjoy powder snow.

The old snowpack is relatively compact, in the classic December backcountry touring regions there are no pronounced or relevant weak layers evident. A potential persistent weak layer is evident on north-facing slopes above 2200 m.

## Weather

On Saturday the peaks will frequently be shrouded in cloud, visibility often limited by snowfall (10 cm fresh snow). Brisk W/NW winds will be blowing. Temperature at 2000 m: -9 degrees.

On Sunday, visibility will improve in the morning, intermittent sunshine expected over the midday hours. Towards evening cloud cover will move in. Winds will remain mostly light. At 2000 m: -9 to -4 degrees.

## Outlook

Little change in the avalanche situation on Sunday.

### Avalanche problems



### Danger ratings

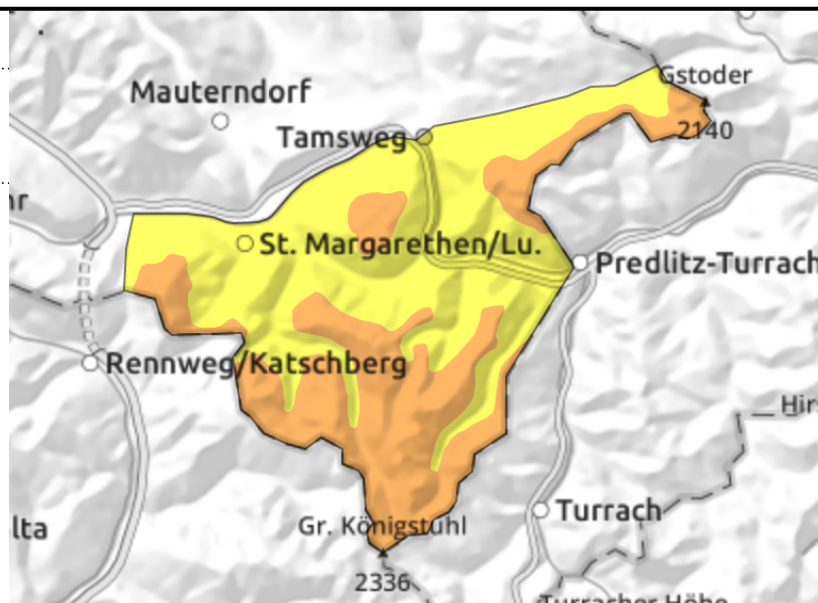
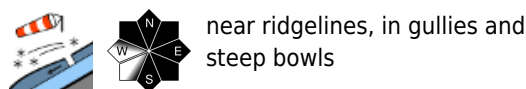


### Expositions



**11.12.2021**

**Nockberge**



**Fresh and older snowdrifts**

Avalanche danger depends on wind influence. Above the treeline: CONSIDERABLE, below that altitude MODERATE.

Avalanche prone locations are concentrated on leeward ridgeline steep slopes in NW/E/S aspects and in steep gullies. Danger zones rapidly become more frequent with ascending altitude above the treeline. Triggering is especially possible by large additional loading (a group, a fall), and in transitions from shallow to deep snow a triggering is possible even by the weight of one sole person. Small-to-medium sized slab avalanches predominate.

**Snowpack structure**

Winds are ongoingly generating fresh snowdrift accumulations. On Friday, strong southerly winds deposited drifts on north-facing slopes. On Saturday the snow will be blown to east-facing slopes by northerly winds. Exposed terrain is windblown, dominated by melt-freeze crusts and drifted masses. Snow quality is far better in wind-protected terrain; that is where to enjoy powder snow. The old snowpack is relatively compact, in the classic December backcountry touring regions there are no pronounced or relevant weak layers evident.

**Weather**

On Saturday, visibility will be adequate, intermittent sunshine expected over the midday hours. Strong NW winds in the afternoon will gradually ease. Temperatures will rise during the daytime at all altitudes, at 2000 m from -9 to -5 degrees.

On Sunday, visibility will improve in the morning, intermittent sunshine expected over the midday hours. Towards evening cloud cover will move in. At 2000 m: -9 to -5 degrees.

**Outlook**

Little change in the avalanche situation on Sunday.

Translated by Jeffrey McCabe, [www.creativtrans.com](http://www.creativtrans.com)

**Avalanche problems**



**Danger ratings**



**Expositions**

