

Caution: snowdrifts

	<p>forestline Untersbergstock, Chiemgauer Alpen, Heutal, Reiteralpe, Loferer und Leoganger Steinberge, Steinernes Meer, Hochkönig, Hagengebirge, Göllstock, Kitzbüheler Alpen, Glemmtal, Oberpinzgauer Grasberge, Osterhorngruppe, Gamsfeldgruppe, Dientner Grasberge, Pongauer Grasberge</p>	
	<p>forestline Großvenedigergruppe Nord, Glocknergruppe Nord, Niedere Tauern Alpenhauptkamm, Niedere Tauern Süd, Ankogelgruppe, Muhr, Goldberggruppe Alpenhauptkamm, Glocknergruppe Alpenhauptkamm, Großvenedigergruppe Alpenhauptkamm, Goldberggruppe Nord, Niedere Tauern Nord</p>	
	<p>forestline Nockberge</p>	
	<p>forestline Tennengebirge, Gosaukamm</p>	

Avalanche problems



Danger ratings

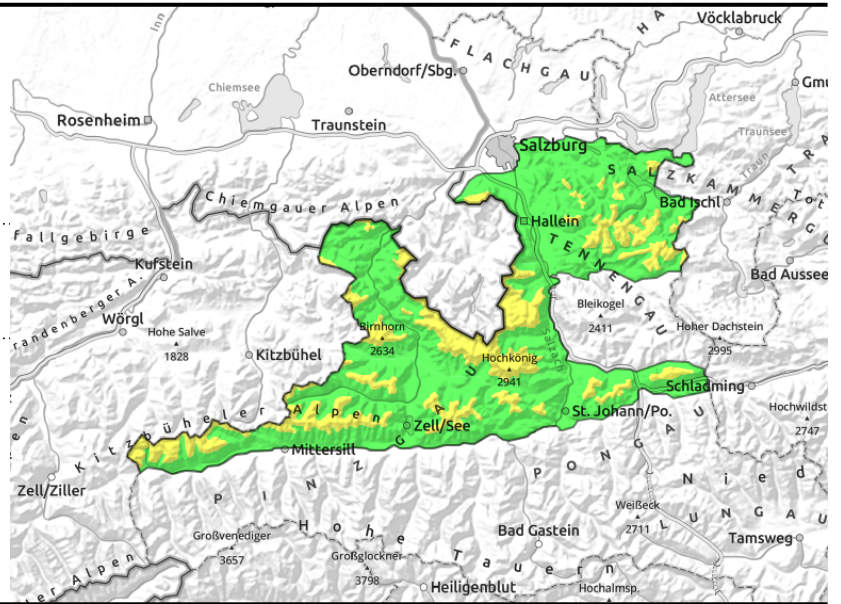


Expositions

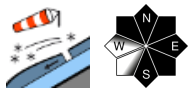


10.12.2021

Untersbergstock, Chiemgauer Alpen, Heutal, Reiteralpe, Loferer und Leoganger Steinberge, Steinernes Meer, Hochkönig, Hagengebirge, Göllstock, Kitzbüheler Alpen, Glemmtal, Oberpinzgauer Grasberge, Osterhorngruppe, Gamsfeldgruppe, Dientner Grasberge, Pongauer Grasberge



forestline



in gullies and steep bowls

Heed snowdrifts above timberline

Avalanche danger depends on wind influence. Above the treeline: MODERATE.

Avalanche prone locations are concentrated on leeward steep slopes in NW/E/S aspects and in steep gullies. Danger zones rapidly become more frequent with ascending altitude above the treeline. Triggering is especially possible by large additional loading (a group, a fall), and in transitions from shallow to deep snow a triggering is possible even by the weight of one sole person. Small-to-medium sized slab avalanches are possible.

Snowpack structure

Higher temperatures on Wednesday, following by dropping temperatures, will bring about a settling of the snowpack and consolidation of the uppermost layers. On Thursday, another 10-20 cm of cold, fresh snow was deposited on this amid increasingly intense wind impact. Bonding to the snow base is predominantly favourable.

The old snowpack is relatively compact, in the classic December backcountry touring regions there are no pronounced or relevant weak layers evident. A potential old snow problem exists on north-facing slopes above 2200 m.

Weather

On Friday, frequent sunshine and good visibility. In the afternoon, high-altitude clouds will move in from the west, creating diffuse light conditions. Southerly foehn winds will intensify during the daytime, reaching the summits, ridges and plateaus, blowing at 50 km/hr. Temperature at 2000 m: -6 degrees; at 3000 m: -12 degrees.

On Saturday, the peaks will often be shrouded in cloud, visibility will be reduced by snowfall (about 10 cm). Strong NW winds will be blowing. Temperature at 2000 m: -9 degrees; at 3000 m: -15 degrees.

Outlook

Fresh snowdrift accumulations will continually be formed. On Saturday, strong W/N winds will intensify this process, particularly in eastern aspects.

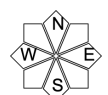
Avalanche problems



Danger ratings

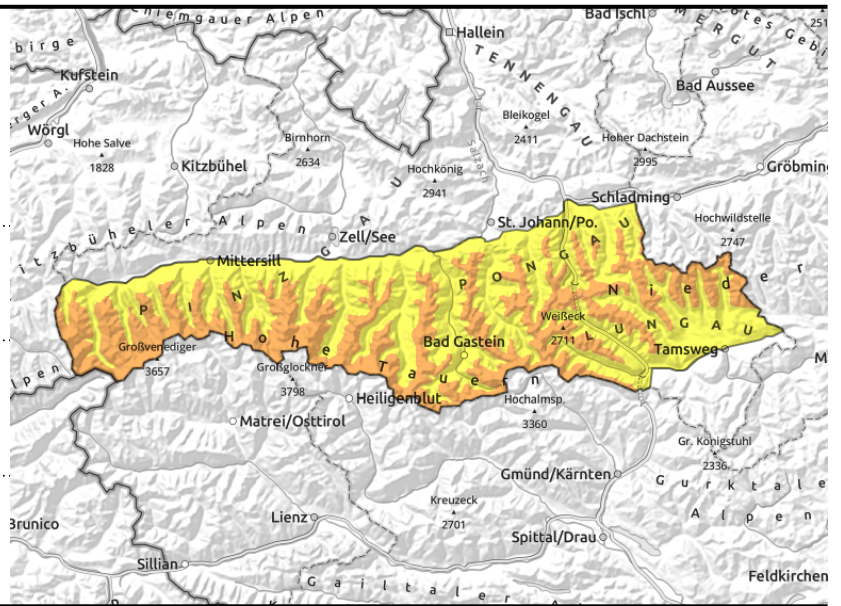


Expositions



10.12.2021

Großvenedigergruppe Nord, Glocknergruppe Nord, Niedere Tauern Alpenhauptkamm, Niedere Tauern Süd, Ankogelgruppe, Muhr, Goldberggruppe Alpenhauptkamm, Glocknergruppe Alpenhauptkamm, Großvenedigergruppe Alpenhauptkamm, Goldberggruppe Nord, Niedere Tauern Nord



forestline



esp. distant from ridgelines, behind protruberances, at forest edges



high alpine regions and shady zones above 2200 m

Heed fresh and older snowdrifts

A serious snowdrift situation: danger above the timberline is CONSIDERABLE, below that altitude MODERATE. Wind impact and unfavourable layering of the old snow has created numerous avalanche prone locations, their number and spread increasing with ascending altitude. Triggering a medium-to-large slab avalanche is possible even by the weight of one single person. At intermediate and low altitudes, naturally triggered glide-snow avalanches are possible on steep grass-covered slopes.

Snowpack structure

Southerly winds on Friday (as occurred on Wednesday) will generate fresh snowdrift accumulations on north-facing slopes. On Thursday the cold fresh snow was transported by NW winds mostly to eastern aspects. Exposed terrain is frequently windblown, gullies and bowls filled to the brim with drifts. Bonding of individual snowdrift masses worsens with ascending altitude.

Above 2200 m, particularly in northern aspects beneath the melt-freeze crust from mid-November there are soft, weak layers (old-snow problem) which can be triggered by large additional loading, e.g. from a superficial triggering.

Weather

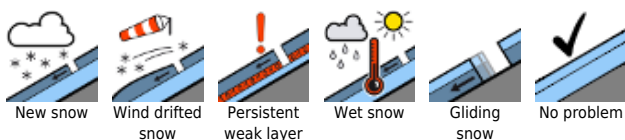
On Friday, good visibility, frequent sunshine. In the afternoon, high-altitude clouds will move in from the west, create diffuse light conditions. During the day, foehn southerly winds will reach 50-70 km/hr. Temperature at 2000 m: -9 degrees; at 3000 m: -14 degrees.

On Saturday, the peaks will often be shrouded in clouds, visibility will be limited by snowfall (5-20 cm of fresh snow anticipated). Strong to storm-strength NW winds expected. Temperature at 2000 m: -8 degrees; at 3000 m: -14 degrees.

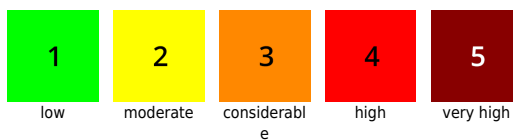
Outlook

Fresh snowdrifts will accumulate repeatedly. On Saturday from increasingly strong NW/N winds, depositing drifts on east-facing and south-facing slopes.

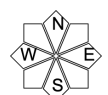
Avalanche problems



Danger ratings

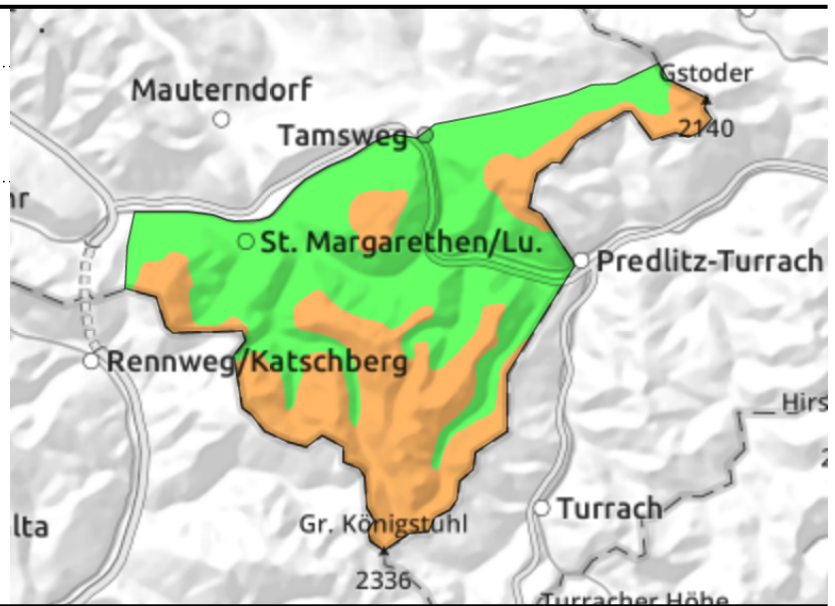
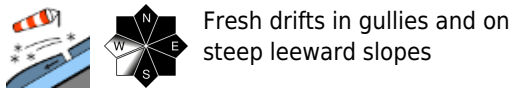


Expositions



10.12.2021

Nockberge



Repeated generation of fresh snowdrifts

Avalanche danger above the timberline is CONSIDERABLE, below that altitude MODERATE. Dangers focus on wind-loaded gullies adjacent to windblown zones and on steep leeward slopes, also on forest edges. Due to repeatedly shifting winds, all aspects are struck. Triggering a medium-to-large slab avalanche is possible even by minimum additional loading - the weight of one sole person.

Snowpack structure

On Friday, strong southerly winds will be blowing (just as on Wednesday) which will generate fresh snowdrifts and deposit them on north-facing slopes. On Thursday the cold fresh snow was transported by NW winds.

Weather

On Friday, frequent sunshine. In the afternoon, high-altitude clouds will move in from the west, create diffuse light conditions. Winds will shift to SW and reach transport strength. Temperature at 2000 m: -10 degrees.

On Saturday, strong NW winds. Visibility variable. Intermittent bright intervals. At 2000 m: -8 degrees.

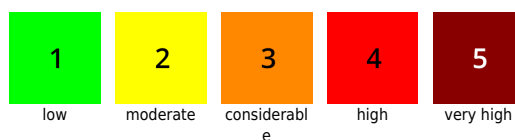
Outlook

No significant change. CONSIDERABLE danger of slab avalanches above the treeline.

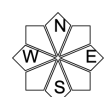
Avalanche problems



Danger ratings

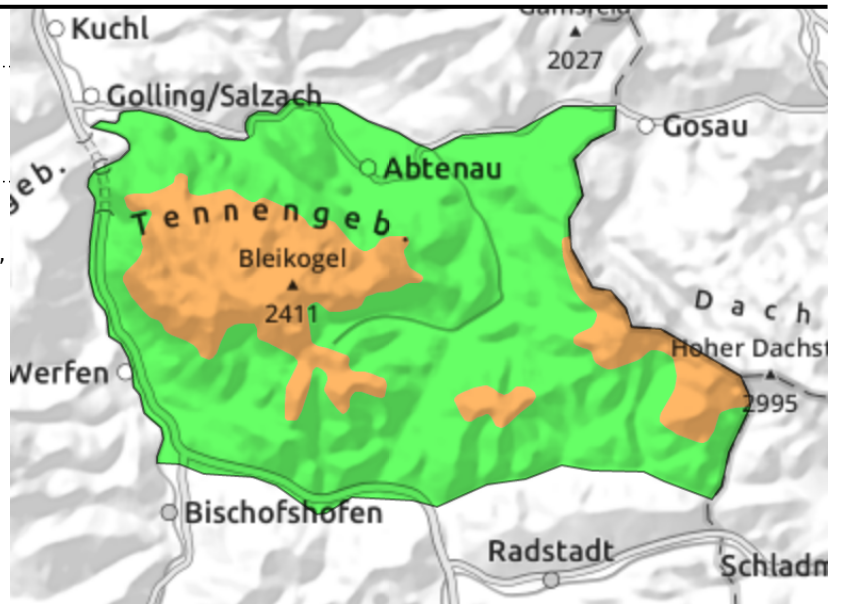
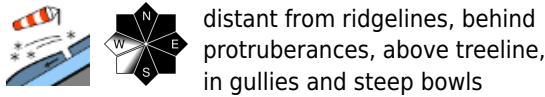


Expositions



10.12.2021

Tennengebirge, Gosaukamm



Fresh and older snowdrifts

Avalanche danger levels are the result of recent and current wind impact. Above the treeline: **CONSIDERABLE.**

Avalanche prone locations focus on leeward steep NW/E/S facing slopes and on steep gullies. Danger zones tend to increase frequently in number with ascending altitude above the treeline. Triggering is possible even by minimum additional loading, i.e. the weight of one sole person. Triggerings are especially likely in transitions from shallow to deep snow and behind high-altitude protruberances in the landscape. Small-to-medium (in isolated cases, large) slab avalanches are possible.

Snowpack structure

On Friday, strong southerly winds will be blowing (just as on Wednesday) which will generate fresh snowdrifts and deposit them on north-facing slopes. On Thursday the cold fresh snow (10-20 cm) was transported by NW winds, deposited on east-facing slopes.

The old snowpack is relatively compact, in the classic December backcountry touring regions there are no pronounced or relevant weak layers evident. A potential old snow problem exists on north-facing slopes above 2200 m.

Weather

On Friday, frequent sunshine. In the afternoon, high-altitude clouds will move in from the west, create diffuse light conditions. Winds will shift to southerly and reach 40-60 km/hr. Temperature at 2000 m: -8 degrees.

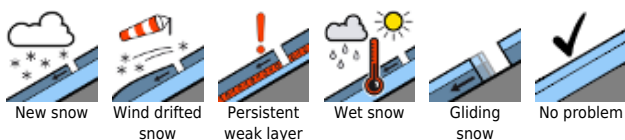
On Saturday, strong NW winds. Visibility limited. At 2000 m: -9 degrees.

Outlook

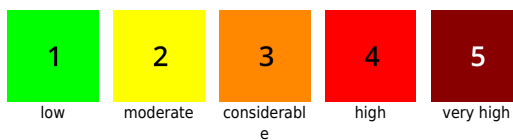
Snowdrift accumulations will be generated repeatedly, sometimes deposited on north-facing slopes, sometimes on east-facing slopes.

Translated by Jeffrey McCabe, www.creativtrans.com

Avalanche problems



Danger ratings



Expositions

