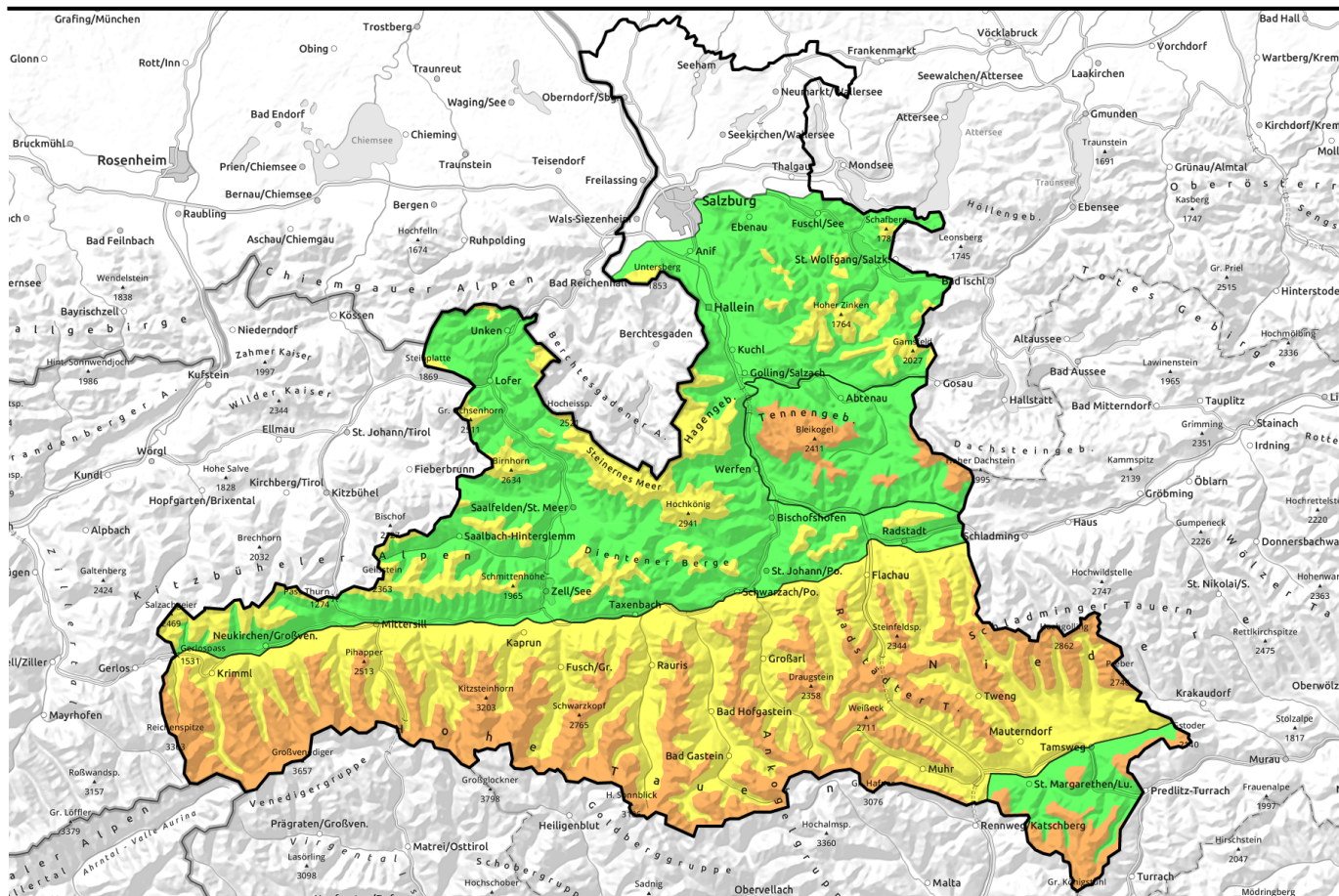


**09.12.2021**



## Fresh snow, intensifying NW winds

	forestline	Untersbergstock, Chiemgauer Alpen, Heutal, Reiteralpe, Loferer und Leoganger Steinberge, Steinernes Meer, Hochkönig, Hagengebirge, Göllstock, Kitzbüheler Alpen, Glemmtal, Oberpinzgauer Grasberge, Osterhorngruppe, Gamsfeldgruppe, Dientner Grasberge, Pongauer Grasberge	
	forestline	Großvenedigergruppe Nord, Glocknergruppe Nord, Niedere Tauern Alpenhauptkamm, Niedere Tauern Süd, Ankogelgruppe, Muhr, Goldberggruppe Alpenhauptkamm, Glocknergruppe Alpenhauptkamm, Großvenedigergruppe Alpenhauptkamm, Goldberggruppe Nord, Niedere Tauern Nord	
	forestline	Nockberge	
	forestline	Tennengebirge, Gosaukamm	

### Avalanche problems



### Danger ratings

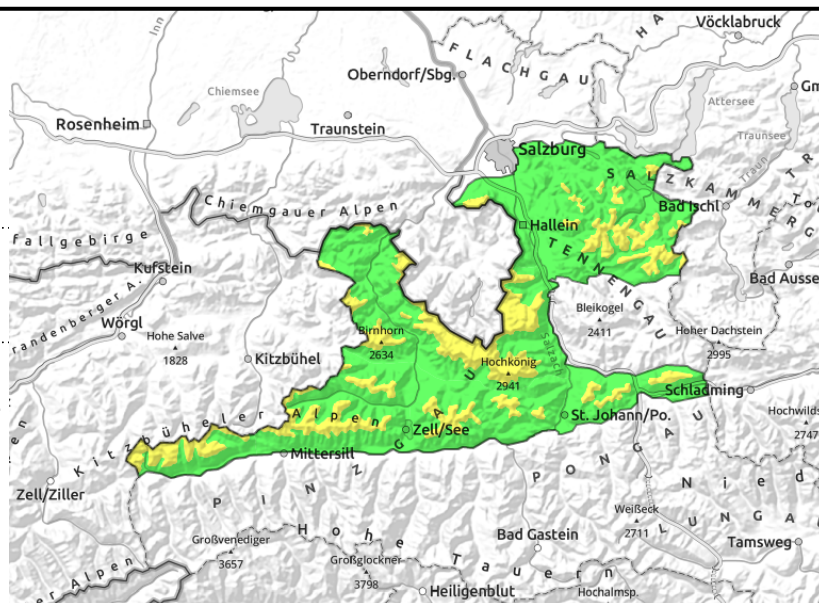
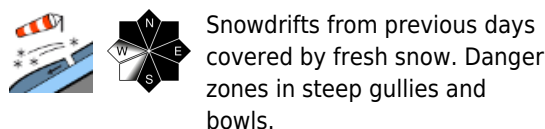


### Expositions



**09.12.2021**

**Untersbergstock, Chiemgauer Alpen, Heutal, Reiteralpe, Loferer und Leoganger Steinberge, Steinernes Meer, Hochkönig, Hagengebirge, Göllstock, Kitzbüheler Alpen, Glemmtal, Oberpinzgauer Grasberge, Osterhorngruppe, Gamsfeldgruppe, Dientner Grasberge, Pongauer Grasberge**



## Fresh snow blankets older drifts

Avalanche danger, the result of recent and current wind impact, is MODERATE above the timberline. Avalanche prone locations focus on leeward steep slopes in NW/E/S aspects and on steep gullies. Danger zones become more frequent with ascending altitude above the treeline. An avalanche can be triggered especially by large additional loading (a group, a fall), in transition zones from shallow to deep snow and in isolated cases by the weight of one sole person. Small-to-medium sized avalanches are possible.

## Snowpack structure

On Wednesday, rising temperatures, then dropping again, led to a settling and consolidating of the snowpack layers. On Thursday, 10-20 cm of fresh snow will fall amid increasing wind impact from W/NW. Bonding to the lower snowpack layers is expected to be favourable. The old snowpack is relatively compact. In the classic backcountry ski touring regions there are no pronounced or relevant weak layers. A potential old snow problem exists in northern aspects above 2200 m.

## Weather

On Thursday, visibility in the mountains will frequently be limited by heavy cloud and snowfall. During the day, weather conditions will improve, the snowfall will slacken off in the afternoon. Brisk to strong W/NW winds will be blowing. Temperature at 2000 m: -9 degrees; at 3000 m, -15 degrees. On Friday, good visibility, frequent sunshine. In the afternoon, high altitude cloud cover will move in from the west, create diffuse light conditions. Foehn-induced southerly winds will arise, reach 40-60 km/hr at high altitude. Temperature at 2000 m: -7 degrees; at 3000 m: -12 degrees.

## Outlook

Amid intensifying southerly wind, fresh snowdrift accumulations will be generated, deposited on north-facing slopes atop a cold/loose base and be prone to triggering. Avalanche danger will increase on Friday.

### Avalanche problems



### Danger ratings

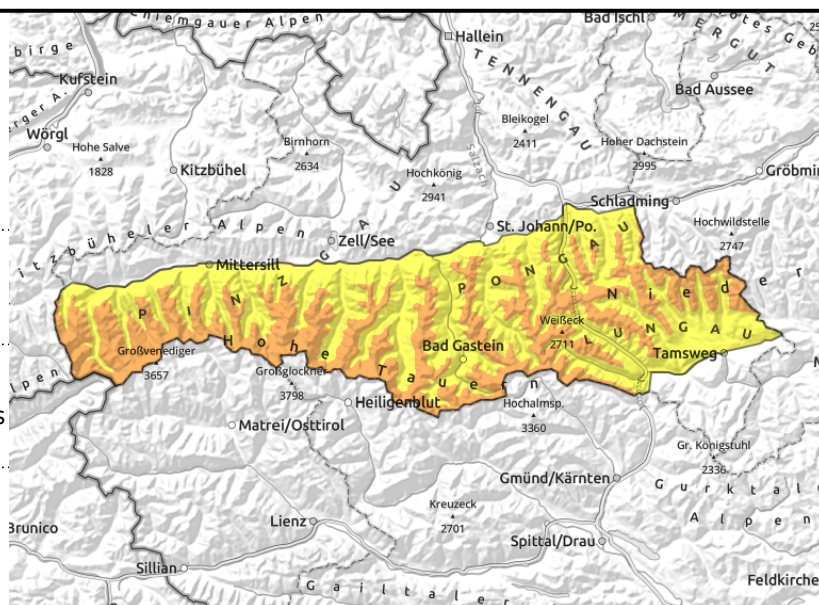


### Expositions



**09.12.2021**

**Großvenedigergruppe Nord, Glocknergruppe Nord, Niedere Tauern Alpenhauptkamm, Niedere Tauern Süd, Ankogelgruppe, Muhr, Goldberggruppe Alpenhauptkamm, Glocknergruppe Alpenhauptkamm, Großvenedigergruppe Alpenhauptkamm, Goldberggruppe Nord, Niedere Tauern Nord**



forestline



esp. distant from ridges, behind protruberances, at forest edges



high-alpine regions, shady slopes above 2200 m

## Fresh snow blankets foehn-induced drifts

A serious snowdrift situation, **CONSIDERABLE** danger above the timberline, **MODERATE** danger below that altitude. Wind impact and unfavourable layering of the old snow have created numerous avalanche prone locations, their frequency and distribution increasing with ascending altitude. Triggering a medium-to-large slab avalanche is possible even by minimum additional loading, i.e. the weight of one single person. At intermediate and low altitudes on steep grassy slopes, naturally triggered glide-snow avalanches are possible.

Caution and restraint urged in all aspects. Fresh snow covers the effects of the foehn, makes assessment more difficult.

### Snowpack structure

On Wednesday, rising temperatures (due to southerly foehn), then dropping again, led to a superficial consolidating of the snowpack layers. Exposed zones are windblown, drifts found mainly distant from ridgelines in gullies, bowls and behind steep protruberances, trigger-sensitive on the loosely-packed base. On Thursday, amid heavy wind impact (W/NW) 10-20 cm of cold fresh snow is expected by afternoon.

Above 2200 m, particularly on north-facing slopes beneath the melt-freeze crust from mid-November there are thin, soft layers (old-snow problem) which can be triggered by large additional loading, i.e. if there is a superficial triggering.

### Weather

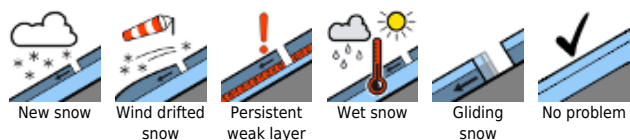
On Thursday, visibility in the mountains will frequently be limited by heavy cloud and snowfall. During the day, weather conditions will improve, snowfall slacken off in the afternoon. Brisk to strong W/NW winds will be blowing. Temperature at 2000 m: -9 degrees; at 3000 m, -15 degrees.

On Friday, good visibility, frequent sunshine. In the afternoon, high altitude cloud cover will move in from the west, create diffuse light conditions. Foehn-induced southerly winds will arise, reach 50-70 km/hr at high altitude. Temperature at 2000 m: -8 degrees; at 3000 m: -13 degrees.

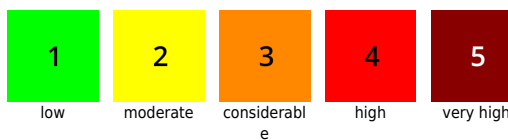
### Outlook

No significant change. Freshly generated snowdrifts at high altitudes in all aspects on Friday demand

#### Avalanche problems



#### Danger ratings



#### Expositions

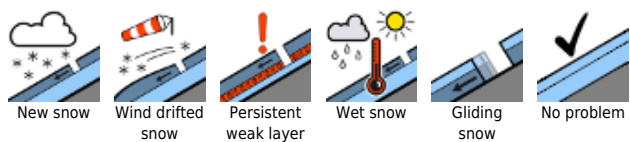


**09.12.2021**

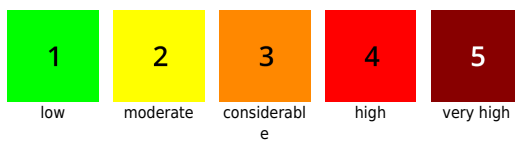
experience in avalanche assessment on-site.

---

**Avalanche problems**



**Danger ratings**

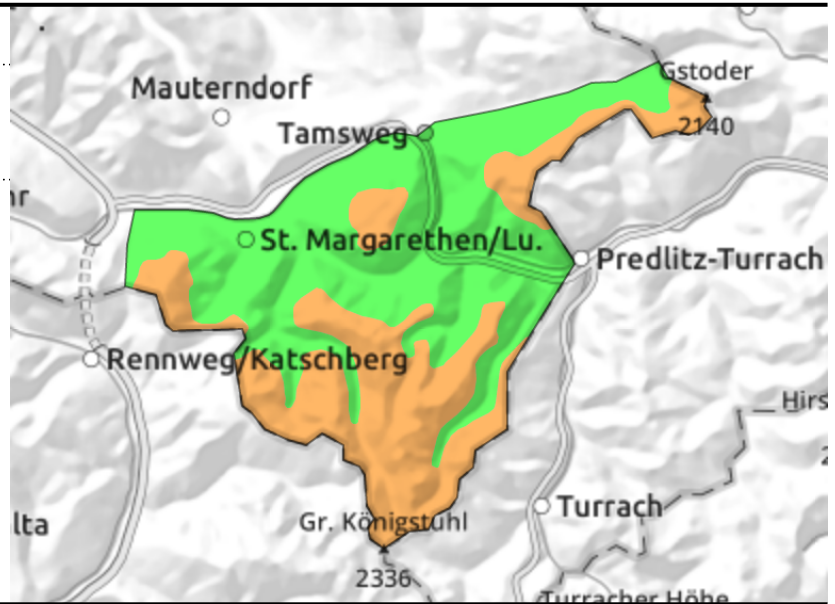
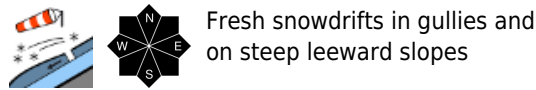


**Expositions**



**09.12.2021**

**Nockberge**



**Trigger-sensitive snowdrifts in gullies and on leeward slopes distant from ridges**

Avalanche danger above the timberline is CONSIDERABLE, below that altitude LOW. Dangers focus on wind-loaded gullies directly adjacent to windblown zones and steep leeward slopes, also at forest edges. Due to repeatedly shifting wind influence, all aspects are at peril. Fresh snow covers the foehn-induced drifts from Wednesday and makes assessing the situation more difficult. Triggering a medium-to-large sized slab avalanche is possible even by minimum additional loading, i.e. the weight of one sole person.

**Snowpack structure**

Strong southerly foehn winds on Wednesday transported the fresh snow and created windblown zones. Snowdrifts deposited atop loosely-packed snow are prone to triggering. On Wednesday night, an additional 10-20 cm of fresh cold snow is anticipated which will again be transported, this time by strong NW winds.

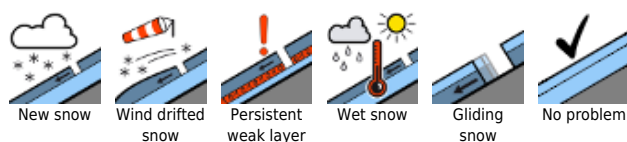
**Weather**

On Thursday, visibility in the mountains will frequently be limited by heavy cloud and snowfall. Brisk to strong W/NW winds will be blowing. Temperature at 2000 m: -8 degrees. On Friday, good visibility, frequent sunshine. In the afternoon, high altitude cloud cover will move in from the west, create diffuse light conditions. Winds will shift to southwesterly, reach transport strength at high altitude. Temperature at 2000 m: -10 degrees.

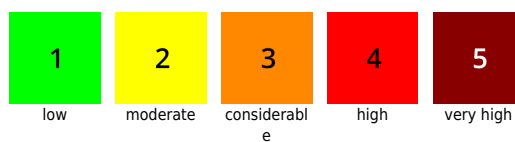
**Outlook**

No significant change. CONSIDERABLE slab avalanche danger above the timberline.

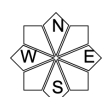
**Avalanche problems**



**Danger ratings**

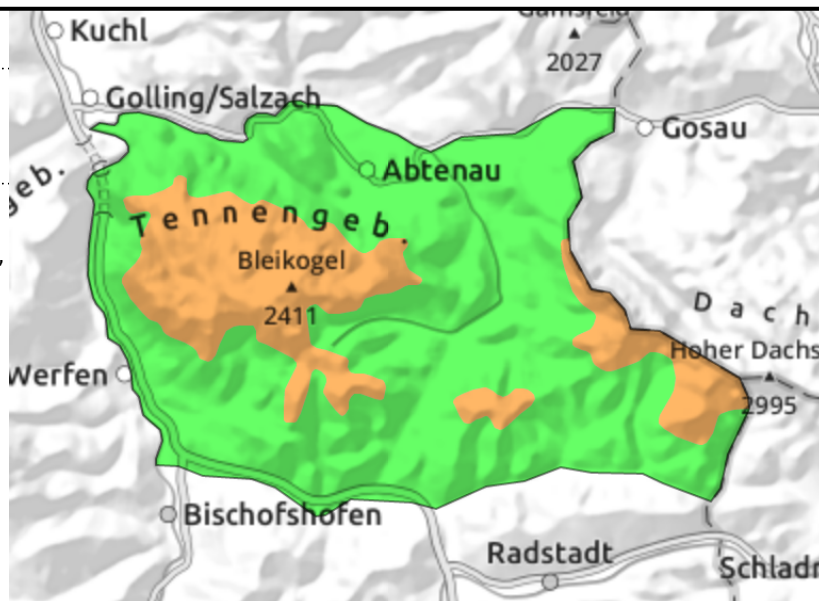
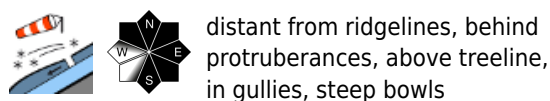


**Expositions**



**09.12.2021**

**Tennengebirge, Gosaukamm**



**Fresh snow blankets older drifts**

Avalanche danger is the result of recent and current wind impact. Above timberline: CONSIDERABLE. Avalanche prone locations focus on leeward steep slopes in NW/E/S aspects and on steep gullies. Danger zones become more frequent with ascending altitude above the treeline. An avalanche can be triggered especially by large additional loading (a group, a fall), in transition zones from shallow to deep snow and in isolated cases by the weight of one sole person. Small-to-medium sized avalanches are possible.

**Snowpack structure**

Amid rising temperatures, strong southerly foehn winds on Wednesday transported the fresh snow and created windblown zones. Snowdrifts deposited atop loosely-packed snow are prone to triggering. On Wednesday night, an additional 10-20 cm of fresh cold snow is anticipated which will again be transported, this time by strong W/NW winds. The old snowpack is relatively compact. In the classic backcountry ski touring regions there are not pronounced or relevant weak layers. A potential old snow problem exists in northern aspects above 2200 m.

**Weather**

On Thursday, visibility in the mountains will frequently be limited by heavy cloud and snowfall. During the day, weather conditions will improve, the snowfall slacken off in the afternoon. Brisk to strong W/NW winds will be blowing. Temperature at 2000 m: -9 degrees; at 3000 m, -15 degrees. On Friday, good visibility, frequent sunshine. In the afternoon, high altitude cloud cover will move in from the west, create diffuse light conditions. Foehn-induced southerly winds will arise, reach 40-60 km/hr at high altitude. Temperature at 2000 m: -7 degrees; at 3000 m: -12 degrees.

**Outlook**

Amid intensifying southerly wind, fresh snowdrift accumulations will be generated, deposited on north-facing slopes atop a cold/loose base and be prone to triggering. Avalanche danger on Friday will probably remain CONSIDERABLE.

Translated by Jeffrey McCabe, [www.creativtrans.com](http://www.creativtrans.com)

**Avalanche problems**



**Danger ratings**



**Expositions**

