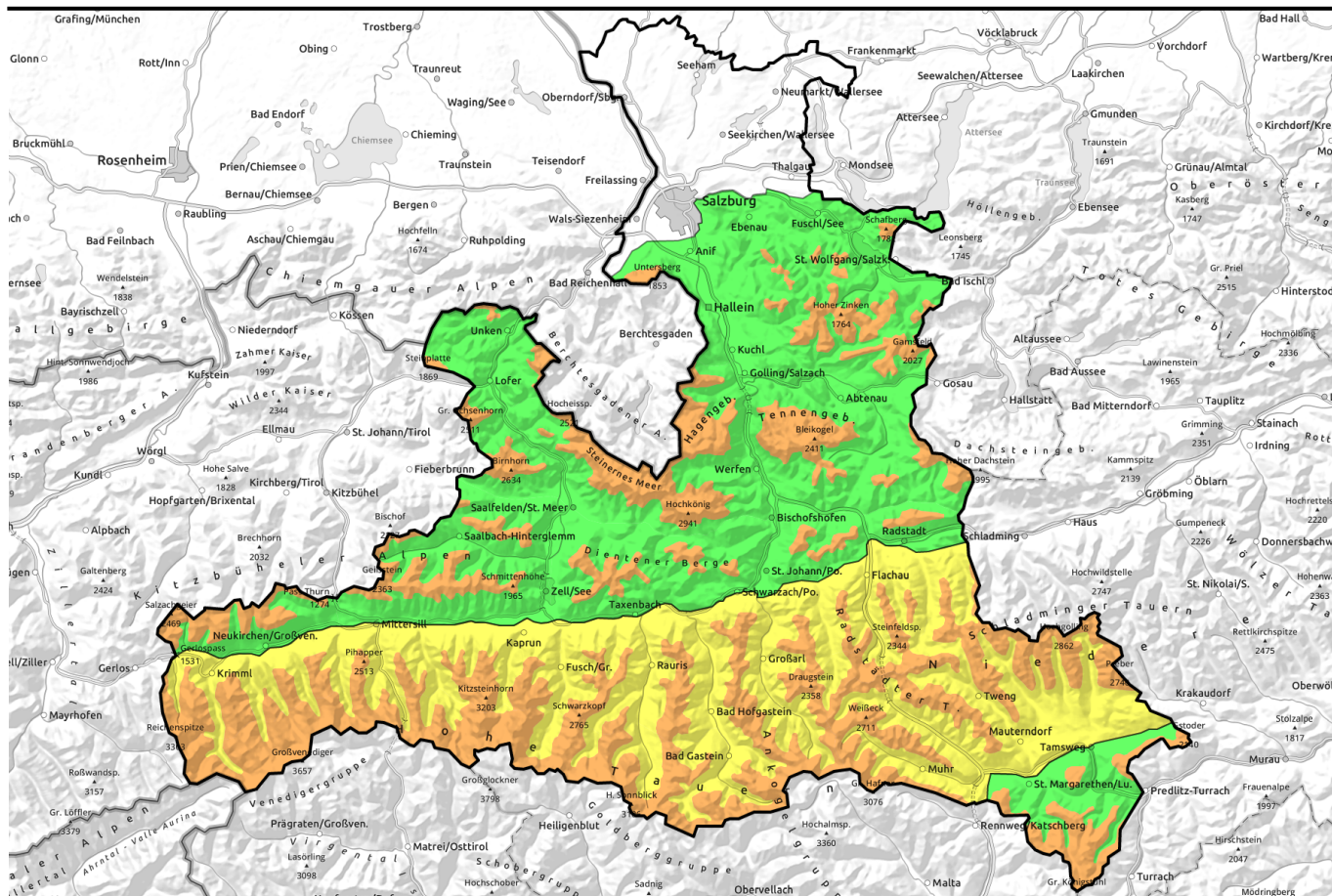


08.12.2021



Foehn wind, higher temperatures: treacherous avalanche situation



forestline

Osterhorngruppe, Gamsfeldgruppe, Untersbergstock, Tennengebirge, Gosaukamm, Chiemgauer Alpen, Heutal, Reiteralpe, Loferer und Leoganger Steinberge, Pongauer Grasberge, Dientner Grasberge, Steinernes Meer, Hochkönig, Hagengebirge, Göllstock, Kitzbüheler Alpen, Glemmtal, Oberpinzgauer Grasberge



forestline

Großenedigergruppe Nord, Glocknergruppe Nord, Niedere Tauern Alpenhauptkamm, Niedere Tauern Süd, Ankogelgruppe, Muhr, Goldberggruppe Alpenhauptkamm, Glocknergruppe Alpenhauptkamm, Großenedigergruppe Alpenhauptkamm, Goldberggruppe Nord, Niedere Tauern Nord

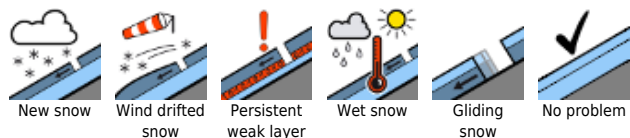


forestline

Nockberge



Avalanche problems



Danger ratings



Expositions



08.12.2021

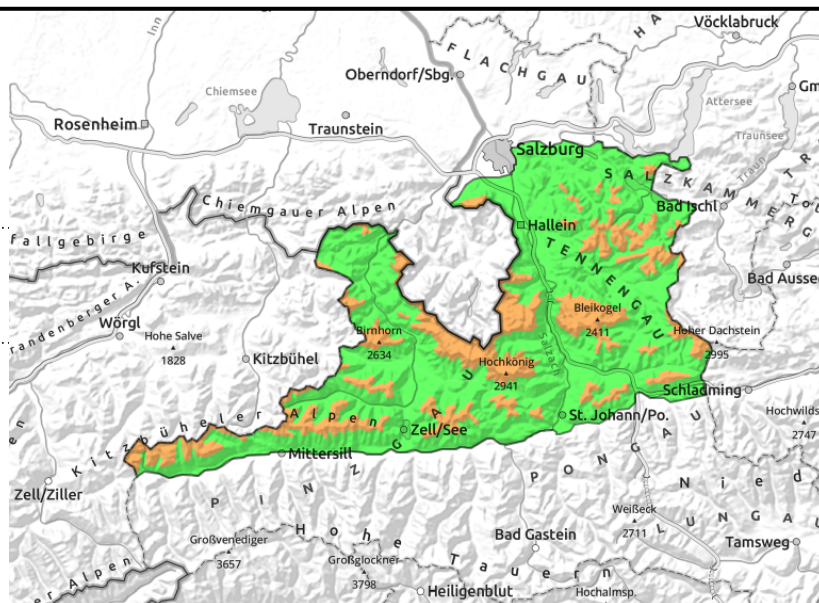
Osterhorngruppe, Gamsfeldgruppe, Untersbergstock, Tennengebirge, Gosaukamm, Chiemgauer Alpen, Heutal, Reiteralpe, Loferer und Leoganger Steinberge, Pongauer Grasberge, Dientner Grasberge, Steinernes Meer, Hochkönig, Hagengebirge, Göllstock, Kitzbüheler Alpen, Glemmtal, Oberpinzgauer Grasberge



forestline



fresh snowdrifts above timberline, easily triggered, small-to-medium size



Freshly generated, trigger-sensitive snowdrifts

Avalanche danger is the direct result of recent and current wind impact: **CONSIDERABLE** danger above treeline.

Avalanche prone locations focus on leeward steep slopes in NW/E/SW aspects and on steep gullies. Danger zones increase rapidly above the treeline. Even the weight of one sole skier can trigger an avalanche. Small-to-medium sized releases (large-sized ones in isolated cases) are possible.

Snowpack structure

The most recent fresh snow was transported on Tuesday by strong W/NW winds. Accompanied by higher temperatures, compact snowdrift accumulations will be generated on Wednesday which will be easily triggerable on the loosely-packed and cold snow.

The old snowpack is relatively compact. In the classic December backcountry touring regions there are no pronounced or relevant weak layers. A potential old snow problem prevails at high altitudes in northern aspects above about 2200 m.

Weather

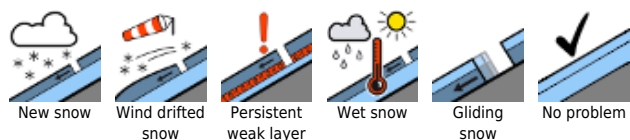
On Wednesday, high-altitude clouds will frequently veil the sun, but summits will mostly remain free. Intermittent sunshine is possible. At high altitudes from Steinberge to the Gosaukamm, strong SW winds will be blowing. It will be noticeably milder: temperatures at 2000 m between -4 and -1 degree; at 3000 m at -7 degrees.

On Thursday, visibility in the mountains will initially be reduced due to heavy cloud and snowfall. During the course of the day conditions will improve, dry weather is anticipated in the afternoon with somewhat better visibility. A moderate to brisk W/NW wind will be blowing. Temperatures at 2000 m: -9 degrees; at 3000 m: -15 degrees.

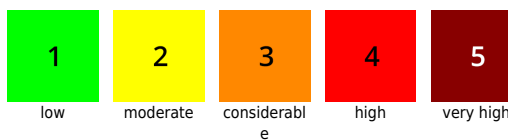
Outlook

No significant change in avalanche danger levels is anticipated. Lower temperatures and westerly winds will not make the avalanche situation any better on Thursday.

Avalanche problems



Danger ratings

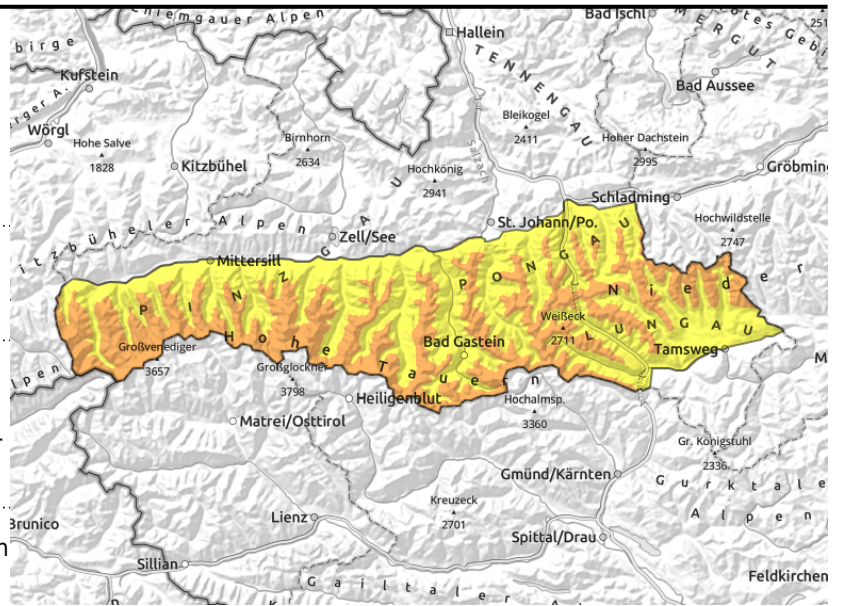


Expositions



08.12.2021

Großvenedigergruppe Nord, Glocknergruppe Nord, Niedere Tauern Alpenhauptkamm, Niedere Tauern Süd, Ankogelgruppe, Muhr, Goldberggruppe Alpenhauptkamm, Glocknergruppe Alpenhauptkamm, Großvenedigergruppe Alpenhauptkamm, Goldberggruppe Nord, Niedere Tauern Nord



forestline



near to and distant from ridgelines, behind abrupt changes in the landscape, near forest edges



in shady and high-alpine terrain (starting at 2200 m)

Unfavourable conditions in foehn-impacted lanes

A treacherous snowdrift situation: danger above the treeline is **CONSIDERABLE**, below that altitude danger is **MODERATE**. Wind impact and unfavourable layering of the old snow have created many avalanche prone locations, frequency and spread of these danger zones increasing with ascending altitude. Triggering a medium-to-large slab avalanche is possible even by the weight of one single skier. Also naturally triggered avalanches are possible on steep slopes which have been heavily wind-loaded by foehn wind. At intermediate and low altitudes on steep grass-covered slopes, naturally triggered glide-snow avalanches are possible.

Caution and restraint are required in all aspects, but as a result of southerly foehn wind particularly the NW/N/NE aspects are treacherous. Due to windblown terrain and the generally rough ground surface in backcountry touring regions, avalanche prone locations are easy to underestimate.

Snowpack structure

The most recent cold fresh snow was transported by intensifying NW winds. Through the higher temperatures and southerly foehn wind on Wednesday, wide ranging snowdrift accumulations will be generated, deposited on top of loose and cold snow, which will be easily triggerable.

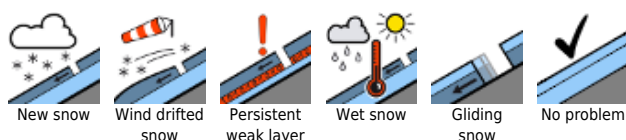
Above 2200 m, particularly in northern aspects, there are thin, soft layers beneath the melt-freeze crust (old-snow problem) which can be triggered by large additional loading, i.e. by a superficial triggering.

Weather

On Wednesday, high-altitude clouds will veil the sun repeatedly, summits will mostly remain free. Intermittent sunshine is possible. At high altitudes from Steinberge to the Gosaukamm, strong SW winds will be blowing. It will be noticeably milder: temperatures at 2000 m between -4 and -1 degree; at 3000 m at -7 degrees.

On Thursday, visibility in the mountains will initially be reduced due to heavy cloud and snowfall. During the course of the day, conditions will improve, dry weather is anticipated in the afternoon with somewhat better visibility. A moderate to brisk W/NW wind will be blowing. Temperatures at 2000 m: -9 degrees; at 3000 m: -15 degrees.

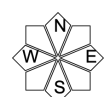
Avalanche problems



Danger ratings



Expositions

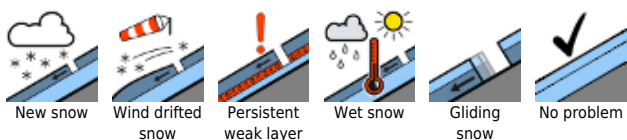


08.12.2021

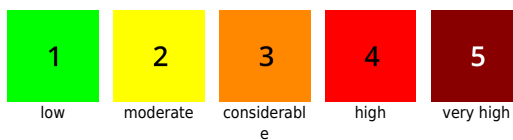
Outlook

No significant change in avalanche danger levels is anticipated. Still a treacherous snowdrift situation on Thursday.

Avalanche problems



Danger ratings

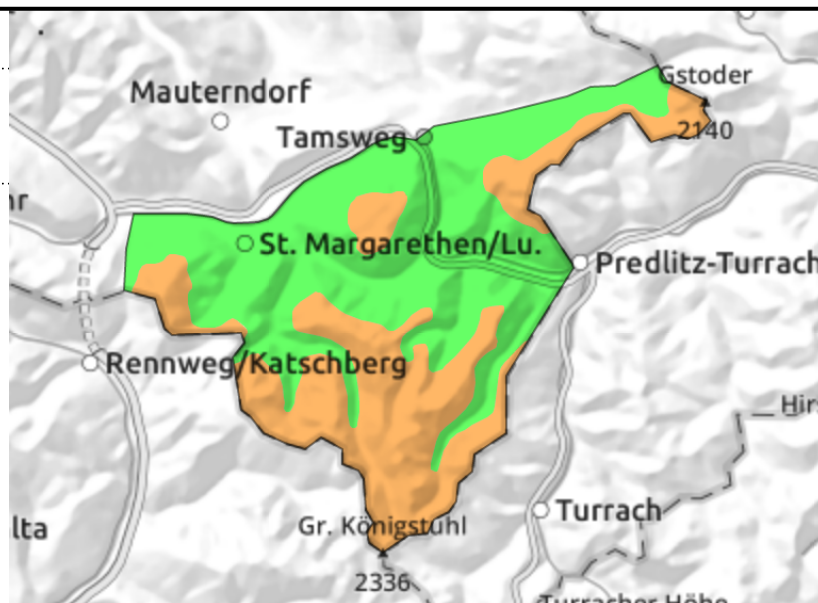
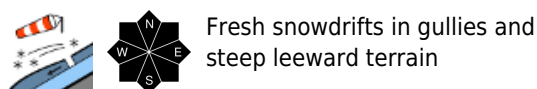


Expositions



08.12.2021

Nockberge



Trigger-sensitive snowdrifts in gullies and leeward terrain

Avalanche danger above the treeline is CONSIDERABLE, below that altitude mostly LOW. Dangers focus on wind-loaded gullies lying directly adjacent to windblown zones and on steep leeward slopes, also at forest edges. Due to repeatedly changing wind impact, all aspects are endangered, but the fresh snowdrifts are concentrated in NW/N/NE aspects. Triggering a medium-to-large slab is possible even by the additional loading of one single person.

Snowpack structure

The most recent snowfall was transported over far-reaching areas, deposited in gullies and on leeward slopes. Due to the somewhat milder temperatures, fresh snowdrift accumulations on the still cold snow base are still extremely prone to triggering. Wind-exposed terrain has little snow, is often completely windblown.

Weather

On Wednesday, strong-to-stormy foehn wind. High-altitude clouds will impede the sunshine, peaks will often be free but in the afternoon disappear in cloud. And gradually, snowfall will set in. Above the treeline: 40 to 60 km/hr southerly winds. At 2000 m: -7 degrees.

On Thursday, limited visibility due to heavy cloud cover, which will disperse somewhat during the course of the day. A strong-to-stormy W/NW wind will be blowing at 40 to 60 km/hr. Temperature at 2000 m: -9 degrees.

Outlook

No significant change. Intensifying NW winds will transport the snow anew.

Translated by Jeffrey McCabe, www.creativtrans.com

Avalanche problems



Danger ratings



Expositions

