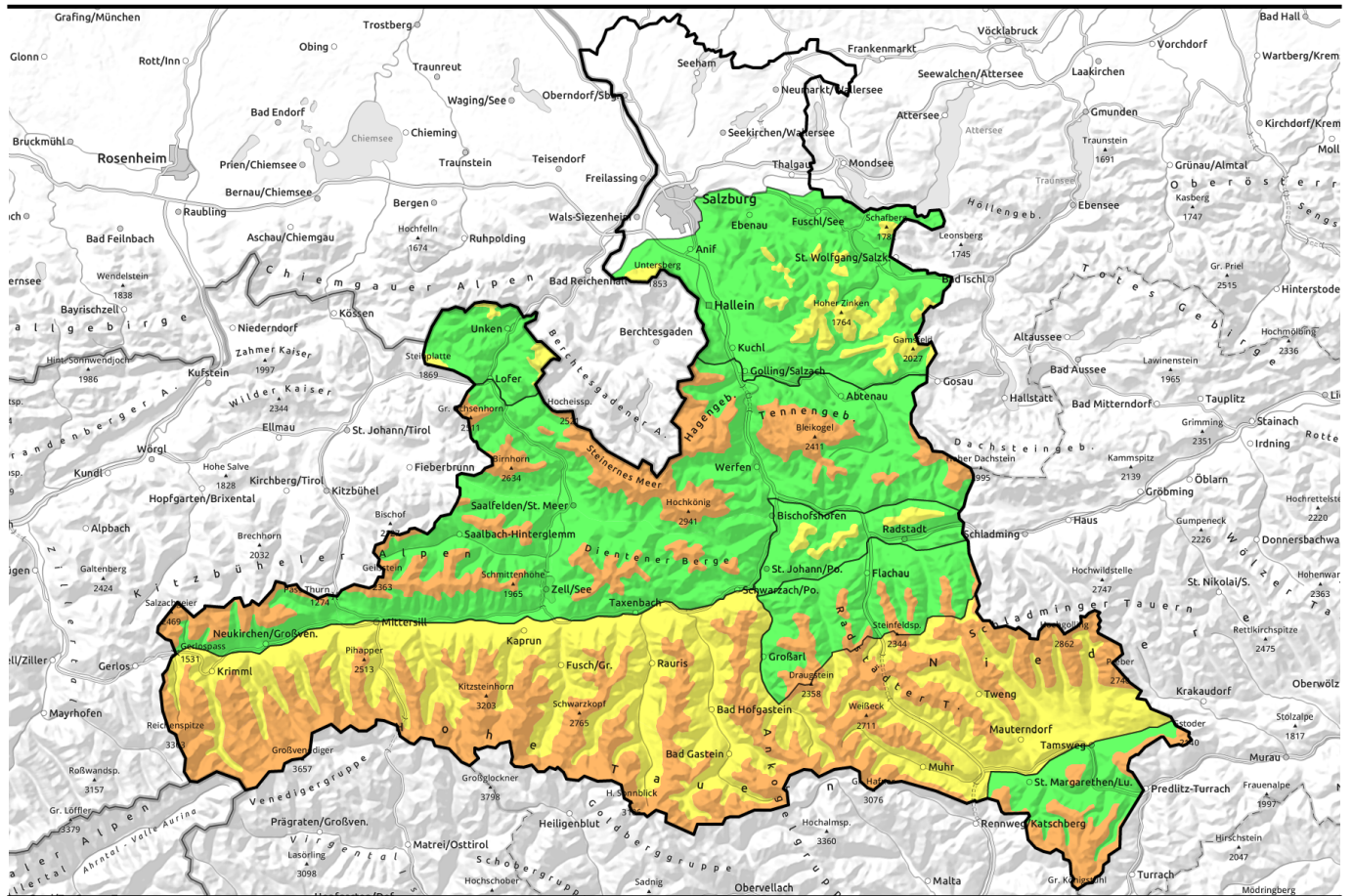


06.12.2021



Attention: northerly winds transporting the cold powder. Especially treacherous: Tauern and Lungau.

	forestline	Chiemgauer Alpen, Heutal, Reiteralpe, Osterhorngruppe, Gamsfeldgruppe, Untersbergstock, Pongauer Grasberge		
	1900 m	Loferer und Leoganger Steinberge, Steinernes Meer, Hochkönig, Hagengebirge, Göllstock, Tennengebirge, Gosaukamm, Niedere Tauern Nord, Oberpinzgauer Grasberge, Kitzbüheler Alpen, Glemmtal, Dientner Grasberge		
	forestline	Großvenedigergruppe Nord, Glocknergruppe Nord, Goldberggruppe Nord, Niedere Tauern Alpenhauptkamm, Niedere Tauern Süd, Ankogelgruppe, Muhr, Goldberggruppe Alpenhauptkamm, Glocknergruppe Alpenhauptkamm, Großvenedigergruppe Alpenhauptkamm		
	forestline	Nockberge		

Avalanche problems



Danger ratings

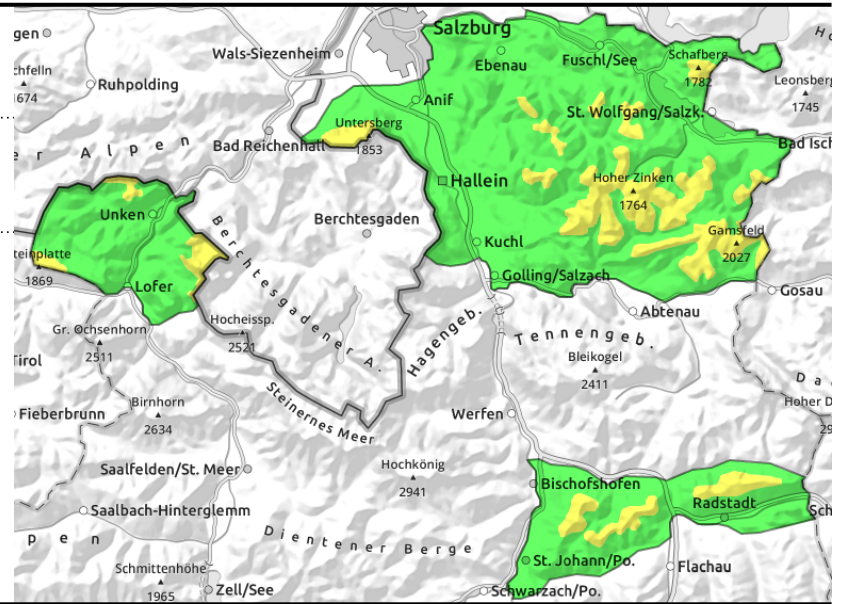
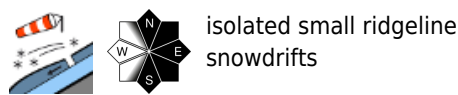


Expositions



06.12.2021

Chiemgauer Alpen, Heutal, Reiteralpe, Osterhorngruppe, Gamsfeldgruppe, Untersbergstock, Pongauer Grasberge



Loosely-packed powder, small ridgeline drifts possible

Avalanche danger is LOW nearly up to the treeline, MODERATE above that altitude. Potential danger zones are focused on steep ridgeline terrain in N/W/S aspects where in some places fresh drifts can trigger. Even the weight of one single person is sufficient to set off a release. Avalanche prone locations are small, strictly delineated; potential slab avalanches are small-to-medium sized.

Snowpack structure

Fresh snow (20-30 cm) loosely-packed and very cold, lies deposited on a relatively compact old snowpack which has next to no pronounced and relevant weak layers. Due to brief spells of wind impact, soft drifted masses are embedded towards the surface, deposited atop the cold, loose snow.

Weather

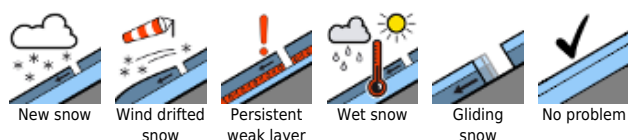
On Monday the peaks will often be veiled in cloud, minor snowfall is possible. In the afternoon the clouds will gradually begin to disperse, a bit of sunshine will make itself felt. As of 2000 m, an intermittently moderate strength NW wind will be blowing at 20-30 km/hr. At 1500 m: -3 degrees; at 2000 m: -10 degrees.

On Tuesday, heavy cloud cover will move in, snowfall is anticipated (about 5 cm). Above the treeline, a W/NW wind will be blowing strongly enough to transport the snow. Ongoingly cold.

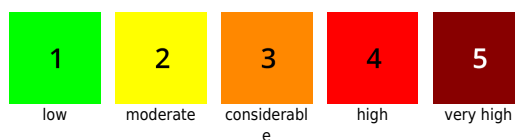
Outlook

The somewhat stronger winds at high altitude will raise the danger of slab avalanches another notch.

Avalanche problems



Danger ratings

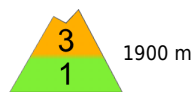


Expositions

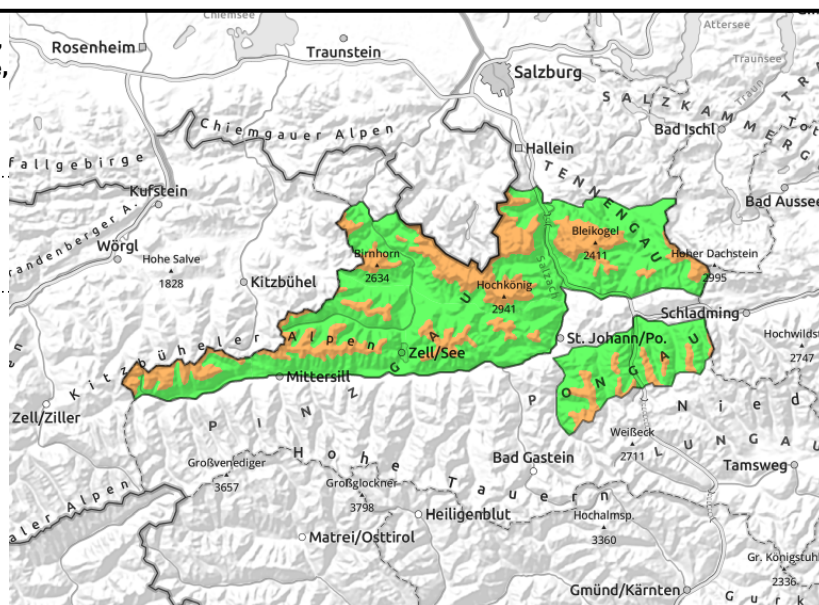


06.12.2021

Loferer und Leoganger Steinberge, Steinernes Meer, Hochkönig, Hagengebirge, Göllstock, Tennengebirge, Gosaukamm, Niedere Tauern Nord, Oberpinzgauer Grasberge, Kitzbüheler Alpen, Glemmtal, Dientner Grasberge



ridgeline snowdrifts, easily triggered, potential avalanches small-to-large



Loosely-packed fresh snow, ridgeline drifts

Avalanche danger is LOW nearly up to the treeline, CONSIDERABLE (due to wind impact) above 1900 m.

Potential danger zones are focused on steep ridgeline terrain in N/E/SW aspects where in some places fresh drifts can trigger. With ascending altitude and wind, the frequency of danger zones increases. Even the weight of one single person is sufficient to set off a release. Small to (isolated) large releases possible. The drifted masses can be covered by quietly falling fresh snow.

Snowpack structure

Fresh snow (30-40 cm) loosely-packed and very cold, lies deposited on a relatively compact old snowpack which has next to no pronounced and relevant weak layers in the classic backcountry skiing regions. A potential old-snow problem in northern aspects at high altitude (above 2200 m in Hochkönig, Steinberge). Due to brief spells of wind impact, soft drifted masses are embedded towards the surface, deposited atop the cold, loose snow, easily triggered.

Weather

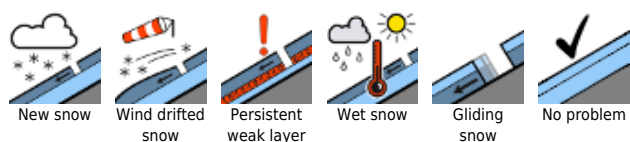
On Monday the peaks will often be veiled in cloud, minor snowfall is possible. In the afternoon the clouds will gradually begin to disperse, a bit of sunshine will make itself felt. As of 2000 m, an intermittently moderate strength NW wind will be blowing at 20-30 km/hr. At 1500 m: -3 degrees; at 2000 m: -10 degrees.

On Tuesday, heavy cloud cover will move in, snowfall is anticipated (about 5 cm). Above the treeline, a W/NW wind will be blowing strongly enough to transport the snow. Ongoingly cold.

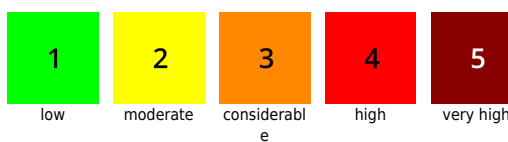
Outlook

The somewhat stronger winds at high altitude will raise the danger of slab avalanches another notch.

Avalanche problems



Danger ratings

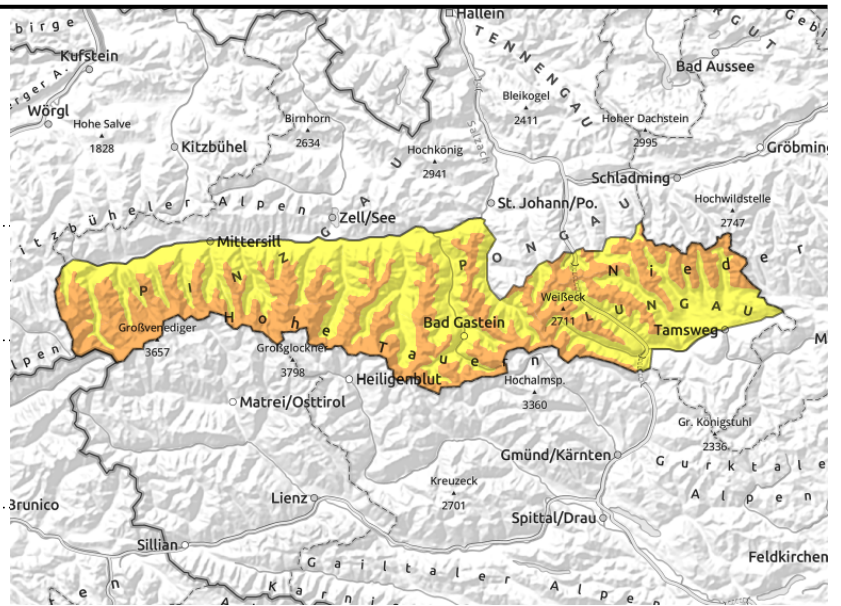


Expositions



06.12.2021

Großvenedigergruppe Nord, Glocknergruppe Nord, Goldberggruppe Nord, Niedere Tauern Alpenhauptkamm, Niedere Tauern Süd, Ankogelgruppe, Muhr, Goldberggruppe Alpenhauptkamm, Glocknergruppe Alpenhauptkamm, Großvenedigergruppe Alpenhauptkamm



forestline



near to and distant from ridgelines, behind abrupt changes in the terrain, near forest edges



shady zones and high alpine regions (starting at 2200 m)

Still treacherous! Lots of snowdrift accumulations in open terrain.

Restraint is imperative. Strong winds and the concealed old-snow problem (intensifying with ascending altitude) have created numerous danger zones which can be triggered even by the weight of one single person. Above the treeline, avalanche danger is **CONSIDERABLE**. Caution and restraint applies to all aspects, but NE/S/SW aspects are particularly treacherous. The triggered slabs can be large-sized. Due to windblown terrain and the general roughness of the ground in backcountry touring zones, avalanche prone locations can easily be underestimated.

Snowpack structure

Fresh snow (30-50 cm) loosely-packed and very cold, lies deposited on a relatively compact old snowpack. Winds are strong, generating wide-ranging snowdrift masses which are easily triggered on the loose and cold snow. Above 2200 m, at least in northern aspects, there is a thin fracturable layer of old snow from mid-November beneath the melt-freeze crust.

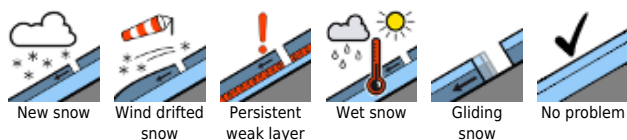
Weather

On Monday the peaks will often be veiled in cloud, minor snowfall is possible. In the afternoon the clouds will gradually begin to disperse, starting in the Pinzgau, some sunshine will make itself felt, more in the south. As of 2000 m and in the saddles on the Main Alpine Ridge an intermittently moderate strength NW wind will be blowing at 40-60 km/hr. At 2000 m: -10 degrees, at 3000 m: -16 degrees. On Tuesday, heavy cloud cover will move in, snowfall is anticipated (about 5 cm). Above the treeline, a W/NW wind will be blowing strongly enough to transport the snow. Ongoingly cold.

Outlook

The tense situation will persist. Lots of drifts in open terrain, easily triggered. Experience and restraining remain essential.

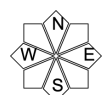
Avalanche problems



Danger ratings

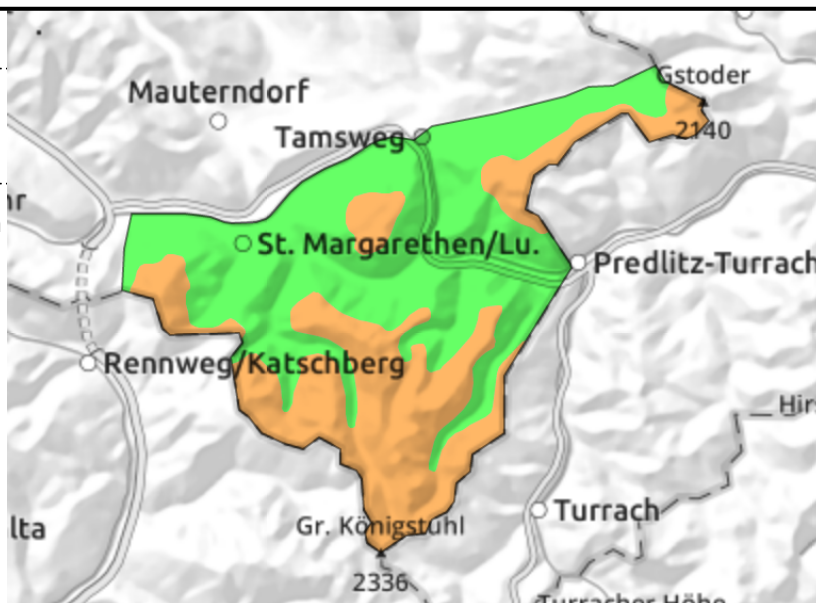
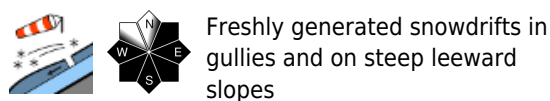


Expositions



06.12.2021

Nockberge



Strong NW winds, instable drifts in gullies and on leeward slopes

Avalanche danger below the timberline is LOW, at forest edges and above that altitude danger is CONSIDERABLE.

Potential danger zones are focused on wind-loaded gullies lying immediately adjacent to windblown zones; and on leeward steep slopes, also at forest edges. This applies particularly to NE/E/S/SW aspects where the freshly generated snowdrift accumulations can easily be triggered. Medium, some large-sized slabs are possible.

Snowpack structure

Fresh snow (20-30 cm) loosely-packed and very cold, was transported by northerly winds, deposited in gullies and on leeward slopes. Exposed terrain is often windblown. The snowdrift accumulations are wide-ranging in places, deposited on loose and cold snow - easily triggered.

Weather

On Monday it will be sunny, but very windy. An icy NW wind will reach 40-60 km/hr. At 2000 m: -10 degrees, at 3000 m: -16 degrees.

On Tuesday, heavy cloud cover will move in, snowfall is anticipated and a strong NW wind will be blowing, enough to transport the snow. Ongoingly cold.

Outlook

Little change. Wind-loaded leeward slopes and gullies remain treacherous.

Translated by Jeffrey McCabe, www.creativtrans.com

Avalanche problems



Danger ratings



Expositions

