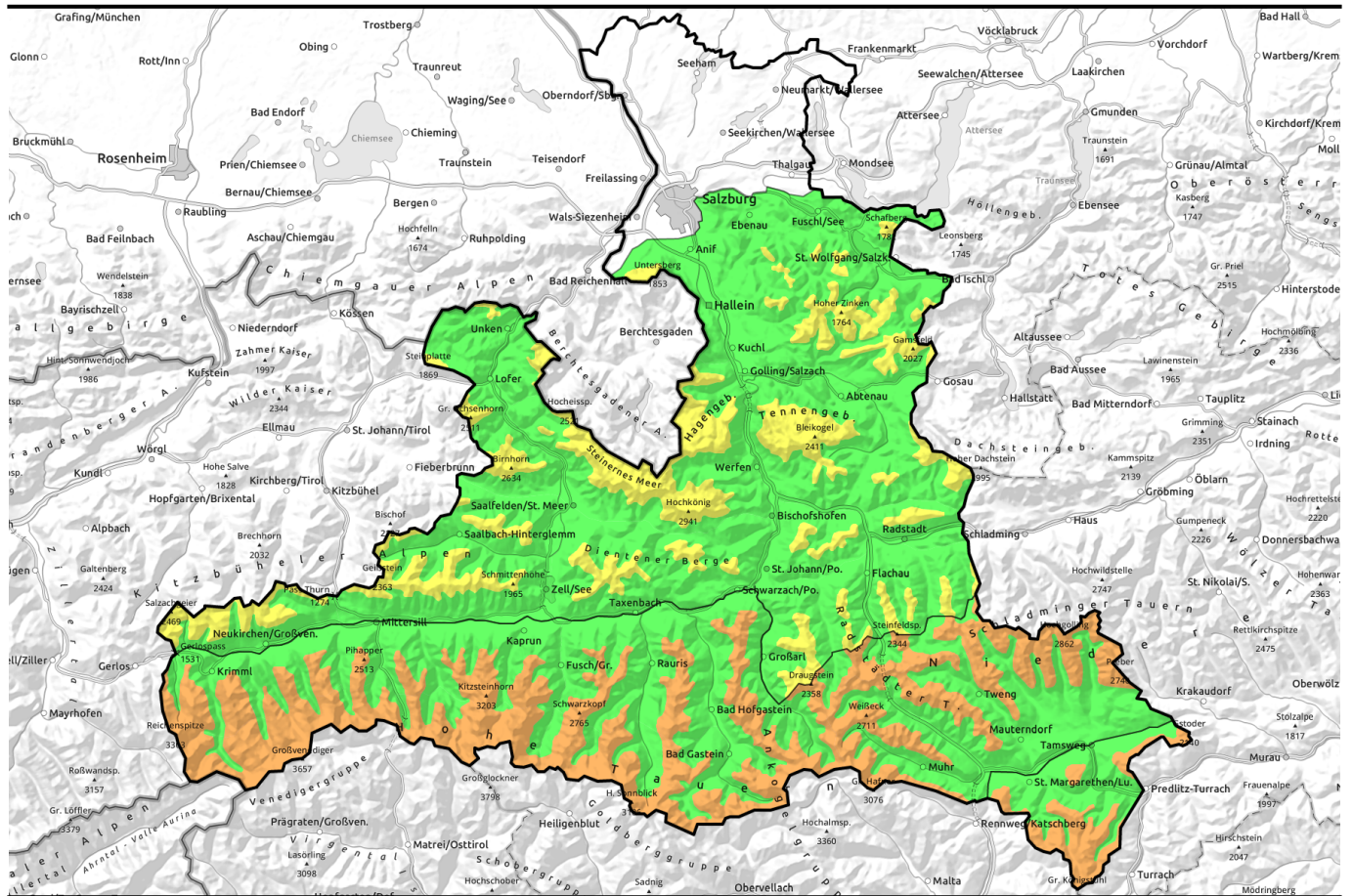


05.12.2021



Cold fresh snow and, in places, strong winds. Treacherous in Tauern and Lungau.

	<p>forestline Osterhorngruppe, Gamsfeldgruppe, Untersbergstock, Tennengebirge, Gosaukamm, Steinernes Meer, Hochkönig, Hagengebirge, Göllstock, Chiemgauer Alpen, Heutal, Reiteralpe, Loferer und Leoganger Steinberge, Kitzbüheler Alpen, Glemmtal, Oberpinzgauer Grasberge, Dientner Grasberge, Pongauer Grasberge, Niedere Tauern Nord</p>	
	<p>forestline Großvenedigergruppe Nord, Glocknergruppe Nord, Goldberggruppe Nord, Niedere Tauern Alpenhauptkamm, Niedere Tauern Süd, Ankogelgruppe, Muhr, Goldberggruppe Alpenhauptkamm, Glocknergruppe Alpenhauptkamm, Großvenedigergruppe Alpenhauptkamm</p>	
	<p>forestline Nockberge</p>	

Avalanche problems



Danger ratings

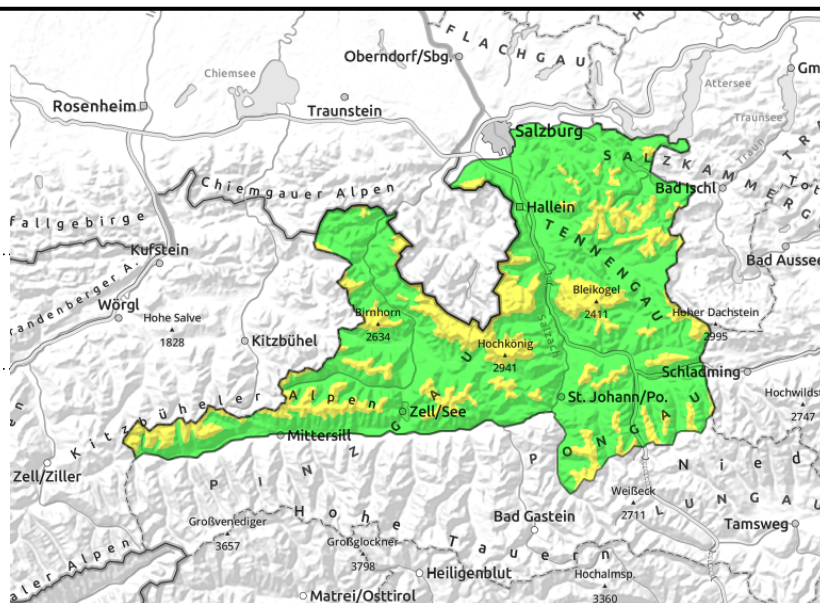


Expositions



05.12.2021

Osterhorngruppe, Gamsfeldgruppe, Untersbergstock, Tennengebirge, Gosaukamm, Steinernes Meer, Hochkönig, Hagengebirge, Göllstock, Chiemgauer Alpen, Heutal, Reiteralpe, Loferer und Leoganger Steinberge, Kitzbüheler Alpen, Glemmtal, Oberpinzgauer Grasberge, Dientner Grasberge, Pongauer Grasberge, Niedere Tauern Nord



forestline



ridgeline snowdrifts, extended eastern aspects

Quiet, loose fresh snow, but snowdrift accumulations near ridgelines

Avalanche danger is LOW; above the timberline, danger is MODERATE.

Dangers focus on steep ridgeline zones in N/E/S aspects, where freshly generated snowdrifts can be triggered. Avalanche prone locations are generally small-sized, but small-to-medium slabs are nonetheless possible. Drifted snow masses can be blanketed over by fresh snowfall.

Snowpack structure

The milder foehn phase on Saturday helped the snowpack to settle. The old snow is relatively compact, without pronounced or relevant weak layers. The fresh fallen snow is cold, mostly loosely packed. Ridgeline snowdrifts can lie atop loose snow.

Weather

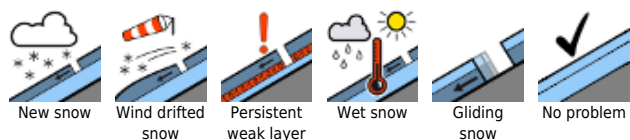
On Saturday night and during the day on Sunday, 10-20 cm of fresh snow is anticipated. Briefly there will be wind impact, but most of the snow will fall cold and quiet. On Sunday the peaks will often be veiled in cloud, intermittent snowfall is anticipated. Temperatures will drop noticeably: at 1500 m to -5 degrees, at 2000 m to -9 degrees.

On Monday, low lying clouds and fog, occasional light snowfall. Still cold.

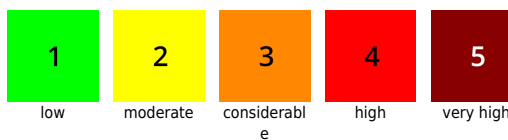
Outlook

Little change expected on Monday.

Avalanche problems



Danger ratings

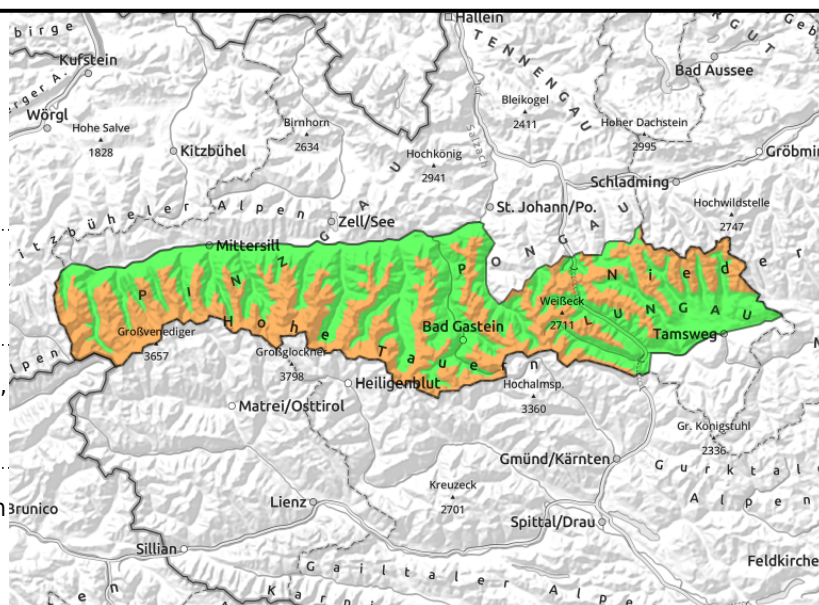


Expositions



05.12.2021

Großvenedigergruppe Nord, Glocknergruppe Nord, Goldberggruppe Nord, Niedere Tauern Alpenhauptkamm, Niedere Tauern Süd, Ankogelgruppe, Muhr, Goldberggruppe Alpenhauptkamm, Glocknergruppe Alpenhauptkamm, Großvenedigergruppe Alpenhauptkamm



forestline



near to and distant from ridges, at forest edges



above appx. 2200 m, at least in extended northern aspects

Caution: instable snowdrifts and (often) old-snow problem

Restraint is still called for! Foehn wind on Saturday, the concealed old-snow problem at high altitude and now, the freshly generated, frequently widespread snowdrift accumulations are creating numerous danger zones which can frequently be triggered even by the weight of one sole person. Avalanche danger is **CONSIDERABLE** above the timberline.

All aspects are treacherous, but today NE/S/SW in particular. Due to windblown terrain and generally rough ground surfaces in backcountry touring zones, avalanche prone locations can be easily underestimated.

Snowpack structure

The milder foehn phase on Saturday helped the snowpack to settle. In the foehn zones on north-facing slopes, trigger-sensitive snowdrift accumulations have been deposited. The very cold fresh snow on Sunday will frequently be accompanied by strong winds. These newly generated drifts can be deposited on top of loosely-packed snow.

Above about 2200 m, at least in extended northern aspects, there is a thin fracturable melt-freeze crust from November (old-snow problem).

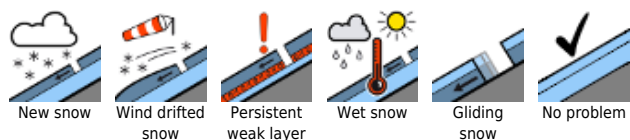
Weather

On Saturday night and during the day on Sunday, 20-40 cm of fresh snow is anticipated. Intermittent very strong winds of 30-40 km/hr, up to 50 km/hr on the Main Alpine Ridge. Poor visibility, the peaks will be shrouded in fog, frequent snowfall is anticipated. Temperatures will drop noticeably: at 2000 m to -9 degrees, at 3000 m -16 degrees. On Monday, low lying clouds and fog, occasional light snowfall. Still cold.

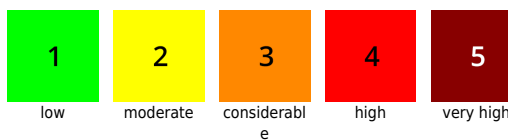
Outlook

Treacherous ongoingly! Numerous snowdrift accumulations in backcountry which can be relatively easily triggered. Experience and restraint are still essential.

Avalanche problems



Danger ratings

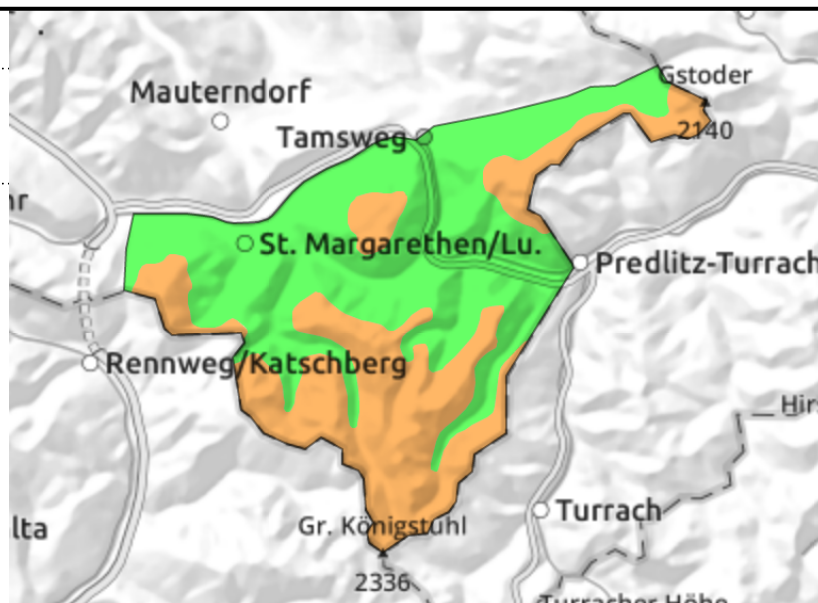
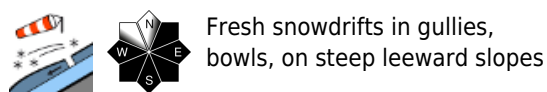


Expositions



05.12.2021

Nockberge



Strong NW winds generating fresh drifts above timberline

Avalanche danger below the timberline is LOW. Above (and at forest edges) danger is CONSIDERABLE.

Dangers focus on drifted gullies immediately adjacent to windblown zones and on steep leeward slopes, particularly in NE/E/S/W aspects where fresh drifts can often be triggered with ease. Medium, and some large-sized slab avalanches are possible.

Snowpack structure

The milder foehn phase on Saturday helped the snowpack to settle to over 2000 m. At higher altitudes, snowdrifts were generated which are prone to triggering in places. The very cold fresh snow on Sunday will frequently be accompanied by strong winds. The newly generated drifts can be deposited on top of loosely-packed snow.

Weather

On Saturday night and during the day on Sunday, 10-20 cm of fresh snow is anticipated. There will be wind impact (NW, 30-40 km/hr, briefly at 50 km/hr). The summits will often be free during the day, higher altitude clouds will persist. Temperatures will drop noticeably: at 2000 m to -9 degrees, at 3000 m -16 degrees.

On Monday, low lying clouds and fog, occasional light snowfall. Still cold.

Outlook

Little change. Wind-loaded leeward slopes and gullies remain treacherous.

Translated by Jeffrey McCabe, www.creativtrans.com

Avalanche problems



Danger ratings



Expositions

