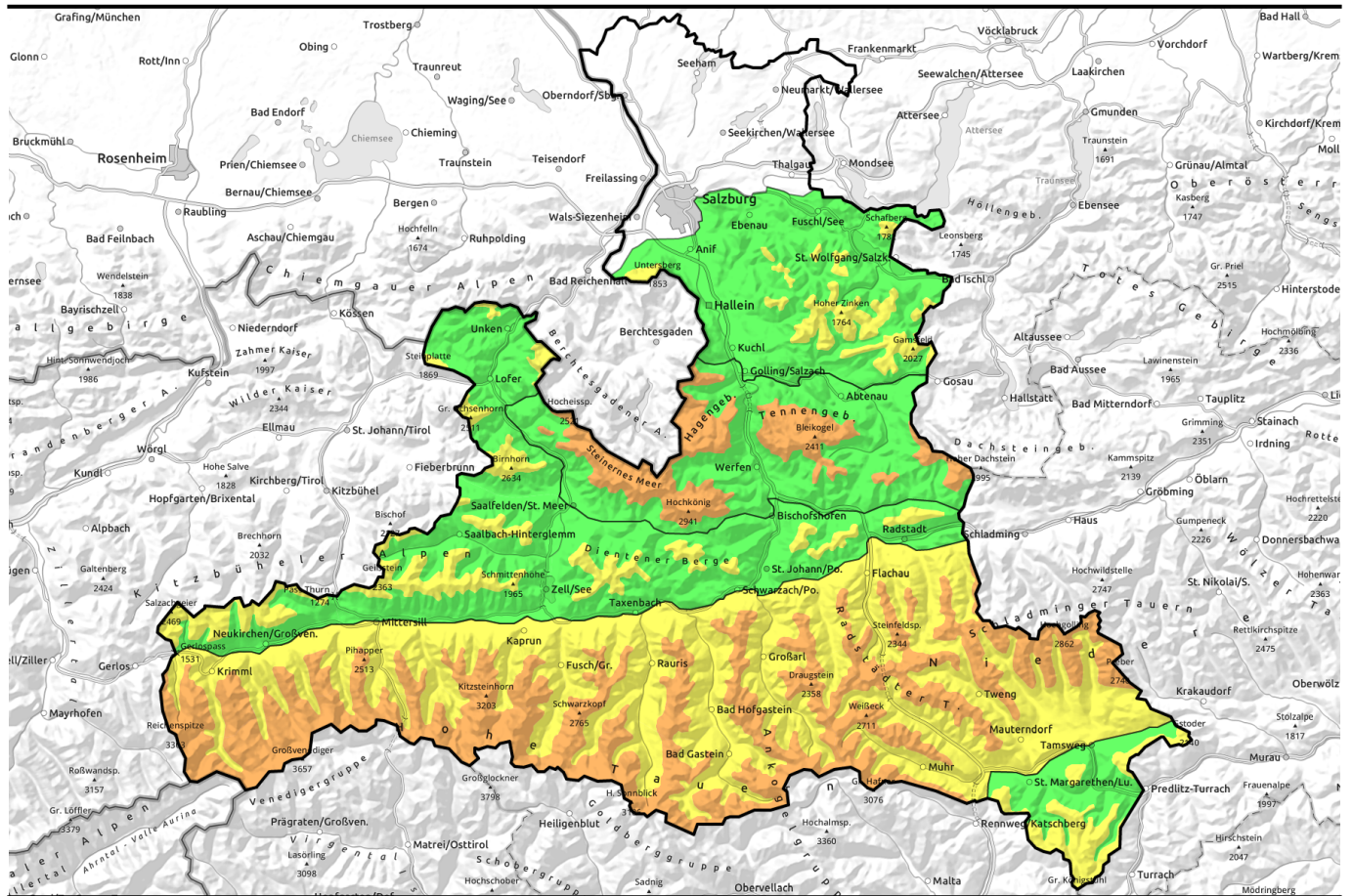


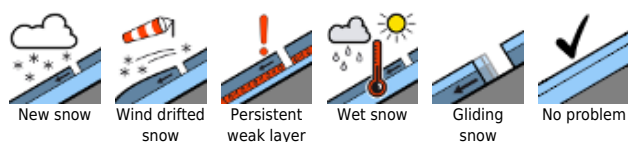
04.12.2021



Rising temperatures, foehn wind, treacherous snowdrifts especially in the Tauern

	<p>forestline</p>	<p>Osterhorngruppe, Gamsfeldgruppe, Untersbergstock, Chiemgauer Alpen, Heutal, Reiteralpe, Loferer und Leoganger Steinberge, Kitzbüheler Alpen, Glemmtal, Oberpinzgauer Grasberge, Dientner Grasberge, Pongauer Grasberge</p>	
	<p>forestline</p>	<p>Großvenedigergruppe Nord, Großvenedigergruppe Alpenhauptkamm, Glocknergruppe Nord, Glocknergruppe Alpenhauptkamm, Goldberggruppe Nord, Niedere Tauern Nord, Niedere Tauern Alpenhauptkamm, Goldberggruppe Alpenhauptkamm, Ankogelgruppe, Muhr, Niedere Tauern Süd</p>	
	<p>2000 m</p>	<p>Steinernes Meer, Hochkönig, Hagengebirge, Göllstock, Tennengebirge, Gosaukamm</p>	
	<p>forestline</p>	<p>Nockberge</p>	

Avalanche problems



Danger ratings

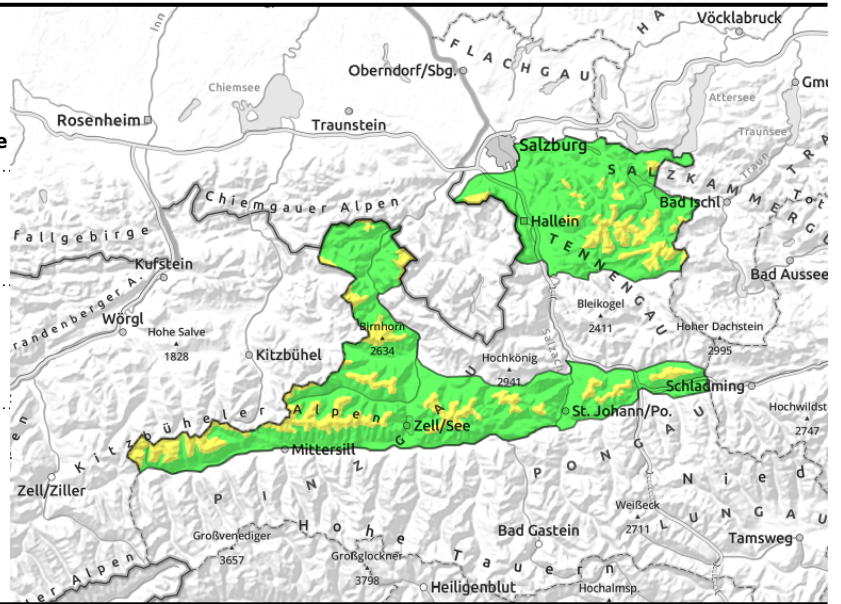
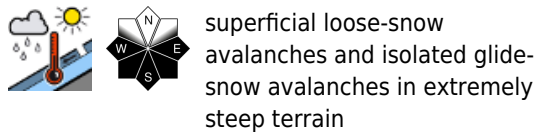
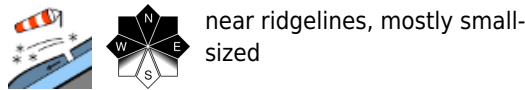


Expositions



04.12.2021

Osterhorngruppe, Gamsfeldgruppe, Untersbergstock, Chiemgauer Alpen, Heutal, Reiteralpe, Loferer und Leoganger Steinberge, Kitzbüheler Alpen, Glemmtal, Oberpinzgauer Grasberge, Dientner Grasberge, Pongauer Grasberge



AVOID snowdrift accumulations near ridgelines

Avalanche danger is LOW, but in the exposed zones near ridgelines MODERATE. Dangers are focused on steep zones near ridgelines in extended northern aspects (W/N/W) where fresh drifts can often be easily triggered. Small-to-medium sized slabs are possible.

Naturally triggered shallow loose-snow avalanches (small-sized) in steep terrain and, on grassy slopes, isolated glide-snow avalanches are possible.

Snowpack structure

The cold fresh snow from Thursday daytime and Thursday night (10-20 cm) will be transported by southerly winds to north-facing slopes on Friday. The freshly generated drifts will lie atop cold and loose snow. At low and intermediate altitudes the snow will become superficially moist. The old snow beneath it is relatively compact and evidences no pronounced weak layers. The snowpack is gliding somewhat over the warm, smooth ground.

Weather

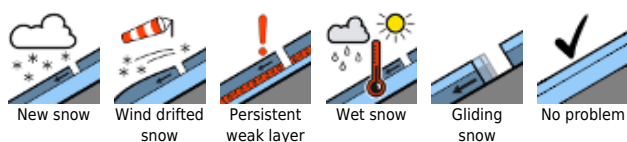
Overcast skies from the start. Summits are free of cloud, only the highest peaks are in fog. Further north, intermittent snowfall is possible, snowfall level ascending to over 1600 m. At 1500 m, temperatures rising to +2 degrees; at 2000 m to +1 degree. Southerly winds at 30-40 km/hr will prevail above the timberline.

On Saturday night and during the daytime on Sunday, 10-20 cm of fresh snow is anticipated. On Sunday the peaks will often be veiled in cloud, intermittent snowfall is anticipated. At high altitudes, a strong NW wind will be blowing which will slacken off somewhat in the afternoon. Temperatures will drop: at 2000 m to -9 degrees.

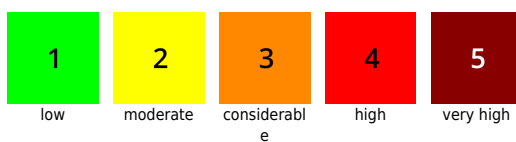
Outlook

As a result of fresh snow and westerly winds, fresh snowdrifts will accumulate. Avalanche danger levels will rise.

Avalanche problems



Danger ratings

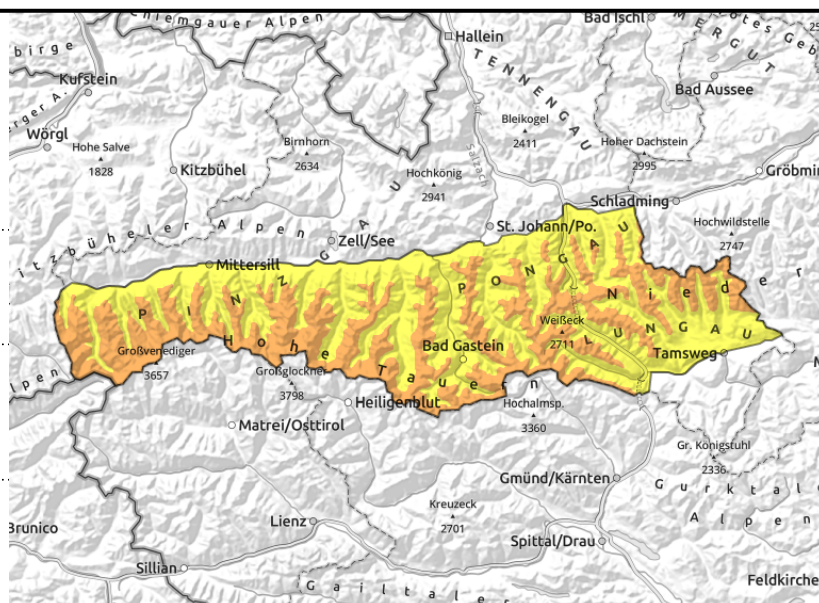


Expositions



04.12.2021

Großvenedigergruppe Nord, Großvenedigergruppe Alpenhauptkamm, Glocknergruppe Nord, Glocknergruppe Alpenhauptkamm, Goldberggruppe Nord, Niedere Tauern Nord, Niedere Tauern Alpenhauptkamm, Goldberggruppe Alpenhauptkamm, Ankogelgruppe, Muhr, Niedere Tauern Süd



forestline



near to and distant from ridgelines, wide-ranging in foehn lanes



superficial loose-snow avalanches and isolated glide-snow avalanches in extremely steep terrain

Caution! Wide ranging foehn-induced snowdrifts in places - easily triggered!

Restraint is imperative. Foehn winds are changing the conditions before our eyes, avalanche prone locations are different from what they were yesterday. Above the timberline, fresh snowdrifts are easily triggered, even the impulse of one sole person can trigger a medium-to-large slab avalanche. All aspects are treacherous, but particularly the northern aspects (W/N/E). Due to windblown terrain and high degree of roughness of the ground, the danger zones can easily be underestimated. Second danger: very steep terrain, where small-to-medium superficial loose-snow avalanches and isolated glide-snow avalanches can trigger naturally as a result of the higher temperatures.

Snowpack structure

The cold fresh snow from Thursday daytime and Thursday night (20-40 cm) will be transported by southerly winds to north-facing slopes on Friday. The freshly generated drifts will lie atop cold and loose snow. At low and intermediate altitudes the snow will become superficially moist. Starting at 2200 m, there is a thin fracturable melt-freeze crust from mid-November (old-snow problem) at least in extended northern aspects.

Weather

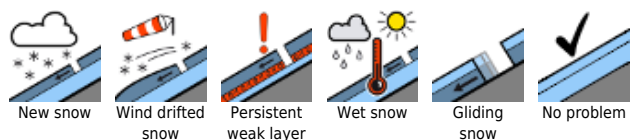
Overcast skies from the start. Summits are free of cloud, only the highest peaks are in fog. Further north, intermittent snowfall is possible. At 2000 m temperatures rising to +1 degree, at 3000 m to -6 degrees. Southerly winds at 40-60 km/hr will prevail.

On Saturday night and during the daytime on Sunday, 20-30 cm of fresh snow is anticipated. On Sunday the peaks will often be veiled in cloud, intermittent snowfall is anticipated. At high altitudes, a strong NW wind will be blowing (40-60 km/hr) which will slacken off somewhat in the afternoon. Temperatures will drop: at 2000 m to -9 degrees, at 3000 m -16 degrees.

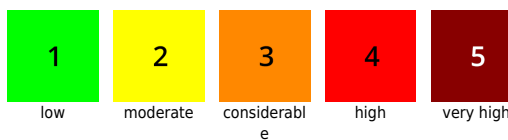
Outlook

Unchanged: great caution urged! As a result of fresh snow and westerly winds, fresh and wide-ranging snowdrift masses will form, deposited again on east-facing and south-facing slopes.

Avalanche problems



Danger ratings

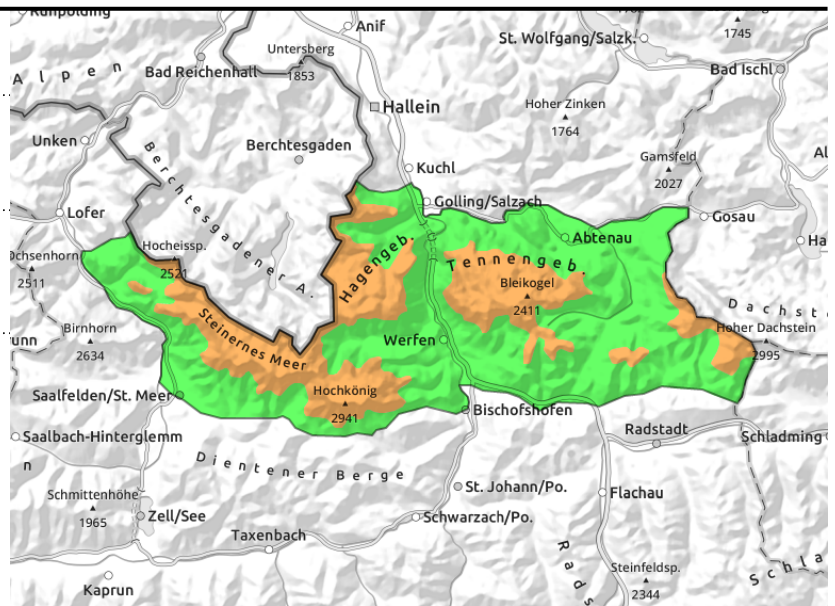
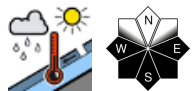
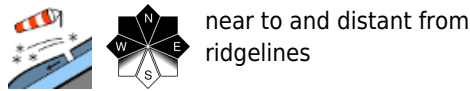
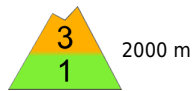


Expositions



04.12.2021

Steinernes Meer, Hochkönig, Hagengebirge, Göllstock, Tennengebirge, Gosaukamm



Foehn wind generating fresh snowdrifts onto north-facing slopes

Fresh snowdrifts occur as of the timberline in places. Starting at 2000 m in northern aspects they are easily triggered. The impulse of one single person can trigger a medium-to-large slab avalanche. Especially treacherous are W/N/E aspects. Due to windblown terrain and the generally rough ground in backcountry touring zones, avalanche prone locations are easy to underestimate. Second danger: very steep terrain, where small-to-medium superficial loose-snow avalanches and isolated glide-snow avalanches can trigger naturally as a result of the higher temperatures.

Snowpack structure

The cold fresh snow from Thursday daytime and Thursday night (15-30 cm) will be transported by southerly winds to north-facing slopes on Friday. In classic foehn lanes these will be deposited atop cold and loosely-packed snow. At low and intermediate altitudes the snow will become superficially moist.

Weather

Overcast skies from the start. Summits are free of cloud, only the highest peaks are in fog. Further north, intermittent snowfall is possible, snowfall level ascending to over 1600 m. At 2000 m temperatures rising to +1 degree, at 3000 m to -6 degrees. Southerly winds at 40 km/hr will prevail above 2000 m.

On Saturday night and during the daytime on Sunday, 10-20 cm of fresh snow is anticipated. On Sunday the peaks will often be veiled in cloud, intermittent snowfall is anticipated. At high altitudes, a strong NW wind will be blowing (40-60 km/hr) which will slacken off somewhat in the afternoon. Temperatures will drop: at 2000 m to -9 degrees.

Outlook

As a result of fresh snowfall and westerly winds, fresh snowdrift accumulations will be generated. Avalanche danger levels will increase.

Avalanche problems



Danger ratings

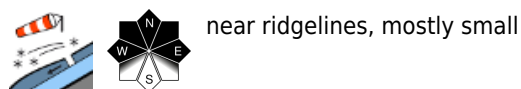


Expositions

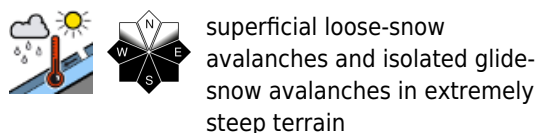


04.12.2021

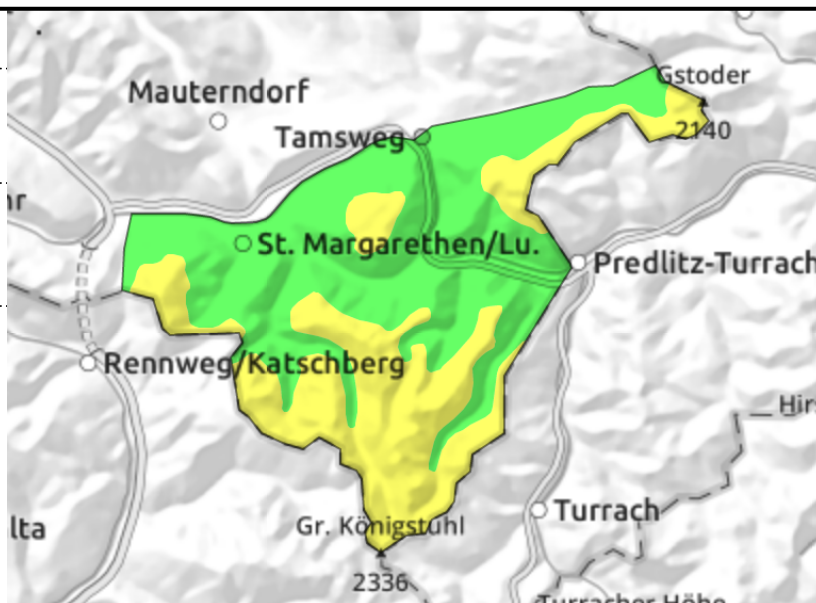
Nockberge



near ridgelines, mostly small



superficial loose-snow avalanches and isolated glide-snow avalanches in extremely steep terrain



AVOID ridgeline snowdrift accumulations

Avalanche danger is LOW, but in the exposed zones near ridgelines MODERATE. Dangers are focused on steep zones near ridgelines in extended northern aspects (W/N/W) where the fresh drifts can often be easily triggered. Small-to-medium sized slabs are possible.

Naturally triggered shallow loose-snow avalanches (small-sized) in steep terrain and, on grassy slopes, isolated glide-snow avalanches are possible.

Snowpack structure

The cold fresh snow from Thursday daytime and Thursday night (10-20 cm) will be transported by southerly winds to north-facing ridgeline sectors on Friday. The freshly generated drifts will lie atop cold and loose snow. At low and intermediate altitudes the snow will become superficially moist. The old snow beneath it is relatively compact and evidences no pronounced weak layers. The snowpack is gliding somewhat over the warm, smooth ground.

Weather

Overcast skies from the start. Summits are free of cloud, only the highest peaks are in fog, a bit of sunshine is possible. Later on, intermittent snowfall is possible. At 2000 m temperatures rising to +1 degree, at 3000 m to -6 degrees. Southerly winds at 40 km/hr will prevail.

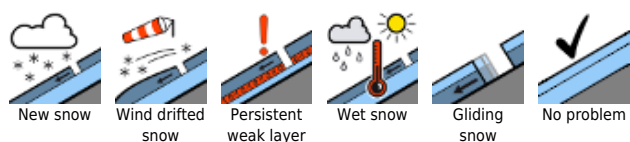
On Saturday night and during the daytime on Sunday, 10-20 cm of fresh snow is anticipated. On Sunday the peaks will often be veiled in cloud, intermittent snowfall is anticipated. At high altitudes, a strong NW wind will be blowing (40-50 km/hr) which will slacken off somewhat in the afternoon. Temperatures will drop: at 2000 m to -9 degrees, at 3000 m, -6 degrees.

Outlook

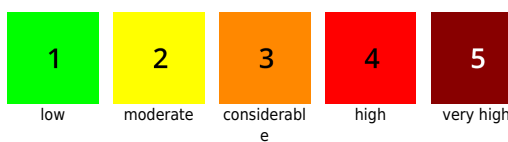
As a result of fresh snow and NW winds, fresh snowdrifts will accumulate. Avalanche danger levels will rise.

Translated by Jeffrey McCabe, www.creativtrans.com

Avalanche problems



Danger ratings



Expositions

