

Fresh snow and NW wind: freshly generated snowdrifts

	Osterhorngruppe, Gamsfeldgruppe, Untersbergstock, Chiemgauer Alpen, Heutal, Reiteralpe, Dientner Grasberge	
	2000 m Großvenedigergruppe Nord, Großvenedigergruppe Alpenhauptkamm, Glocknergruppe Nord, Glocknergruppe Alpenhauptkamm, Goldberggruppe Nord, Goldberggruppe Alpenhauptkamm, Niedere Tauern Alpenhauptkamm, Niedere Tauern Süd, Ankogelgruppe, Muhr	
	2000 m Tennengebirge, Gosaukamm, Steinernes Meer, Hochkönig, Hagengebirge, Göllstock, Oberpinzgauer Grasberge	
	1800 m Loferer und Leoganger Steinberge, Kitzbüheler Alpen, Glemmtal, Niedere Tauern Nord, Pongauer Grasberge, Nockberge	

Avalanche problems



Danger ratings



Expositions



03.12.2021

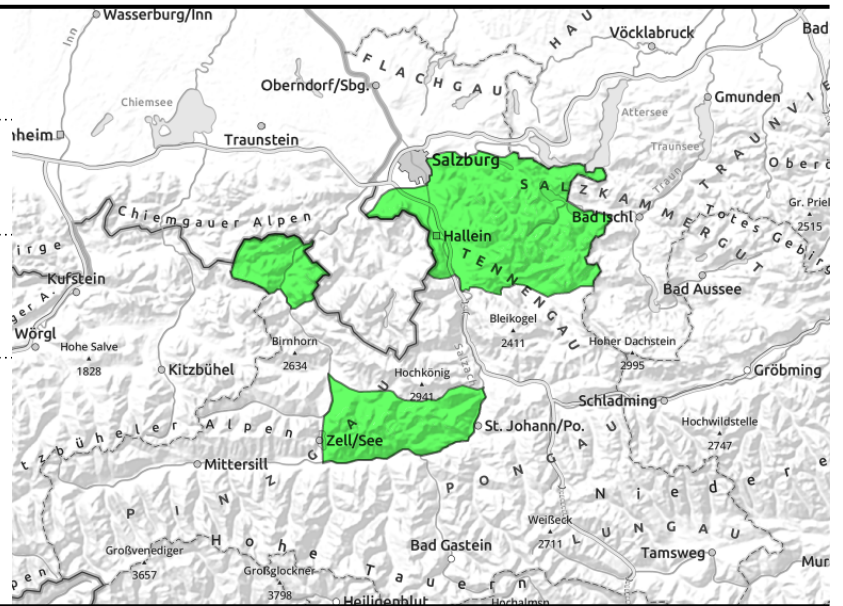
**Osterhorngruppe, Gamsfeldgruppe,
Untersbergstock, Chiemgauer Alpen, Heutal,
Reiteralpe, Dientner Grasberge**



thin, small snowdrift masses



from extremely steep grassy slopes



Shallow snowdrift accumulations above timberline

Avalanche danger is LOW. The few danger spots focus on small, mostly thin snowdrift patches above the treeline (N/E/S). Here and there, a small or medium-sized glide-snow avalanche can trigger naturally in extremely steep terrain.

Snowpack structure

The snowfall from the last few days has settled well. Strikingly weak layers are not evident. The fresh snow (5-15 cm) is being transported by NW winds above the treeline. Freshly generated snowdrifts can be deposited on loosely-packed fresh snow in some places. The snowpack is gliding slightly over warm and smooth ground.

Weather

On Friday, snowfall with interims, heavy cloud cover and residual fog will also hinder visibility. As of midday the cloud cover will disperse somewhat, in afternoon it will turn sunny. In the morning, brisk winds (30 km/hr), slackening off in the afternoon. At 1500 m: -7 degrees; at 2000 m: -11 degrees. On Saturday, overcast skies, most summits will be in the clear. Possible light snowfall at midday. Moderate southerly winds.

Outlook

Little change. Mostly LOW avalanche danger.

Avalanche problems



New snow



Wind drifted snow



Persistent weak layer



Wet snow



Gliding snow



No problem

Danger ratings



1

low



2

moderate



3

considerable



4

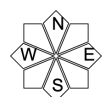
high



5

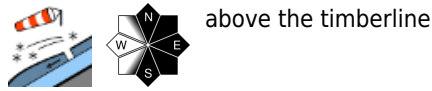
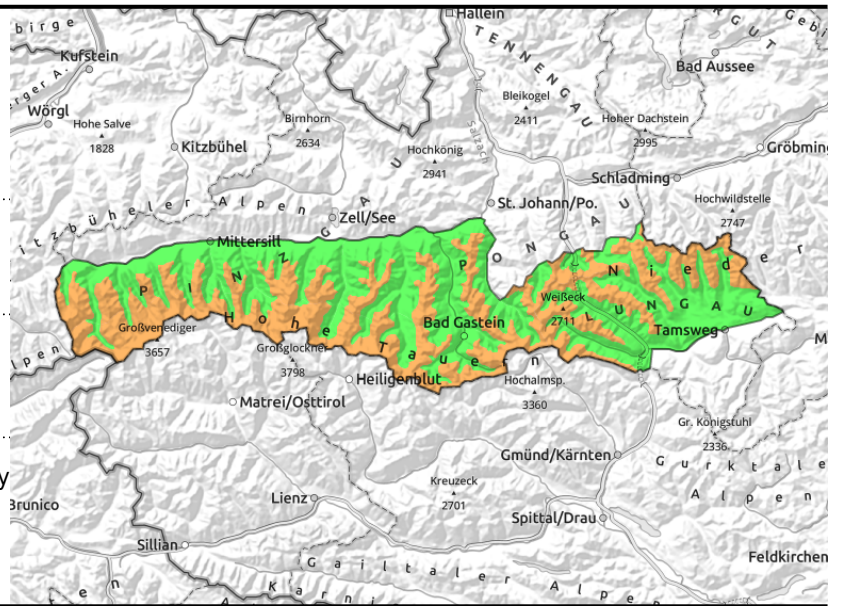
very high

Expositions

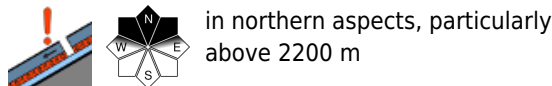


03.12.2021

Großvenedigergruppe Nord, Großvenedigergruppe Alpenhauptkamm, Glocknergruppe Nord, Glocknergruppe Alpenhauptkamm, Goldberggruppe Nord, Goldberggruppe Alpenhauptkamm, Niedere Tauern Alpenhauptkamm, Niedere Tauern Süd, Ankogelgruppe, Muhr



above the timberline



in northern aspects, particularly above 2200 m

Fresh snowdrifts, old snow problem in some places

Restraint is the word of the day! Freshly generated snowdrifts are found starting at the treeline. As of 2000 m they are easily triggered. The impulse of one single person can trigger a medium or large-sized slab. Particularly sensitive: N/E/S aspects. The avalanche prone locations are easy to underestimate due to windblown terrain and generally rough ground surfaces in backcountry touring zones.

Second danger: very steep grassy slopes, where medium-sized glide-snow avalanches can trigger naturally.

Snowpack structure

The temperature fluctuations - first cold, then warm, then cold again - are stabilizing the snowpack. Nevertheless, there are two relevant weak layers: (1) the last bout of fresh snowfall (15-30 cm) was deposited on cold powder snow by NW winds; (2) in the Tauern above 2200 m there is a fracturable layer beneath the melt freeze crust from mid-November (old snow problem) at least in extended northern aspects.

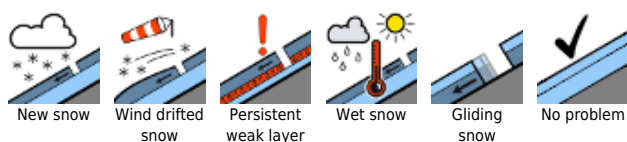
Weather

On Friday, snowfall with interims, heavy cloud cover and residual fog will also hinder visibility. As of midday the cloud cover will disperse somewhat, in afternoon it will turn sunny. In the morning, brisk winds (40-50 km/hr), slackening off in the afternoon. At 2000 m: -11 degrees, at 3000 m: -18 degrees. On Saturday, overcast skies, southerly foehn wind blowing at 40-50 km/hr. Most summits will be free. In the afternoon, light snowfall is possible.

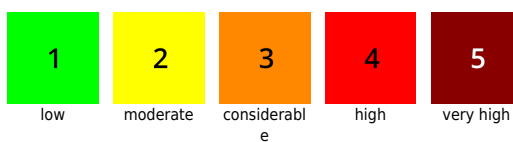
Outlook

Caution continues to be imperative! Snowdrift problem persists above 2000 m. Moderate gliding snow activity below 2000 m.

Avalanche problems



Danger ratings



Expositions



03.12.2021

Tennengebirge, Gosaukamm, Steinernes Meer, Hochkönig, Hagengebirge, Göllstock, Oberpinzgauer Grasberge



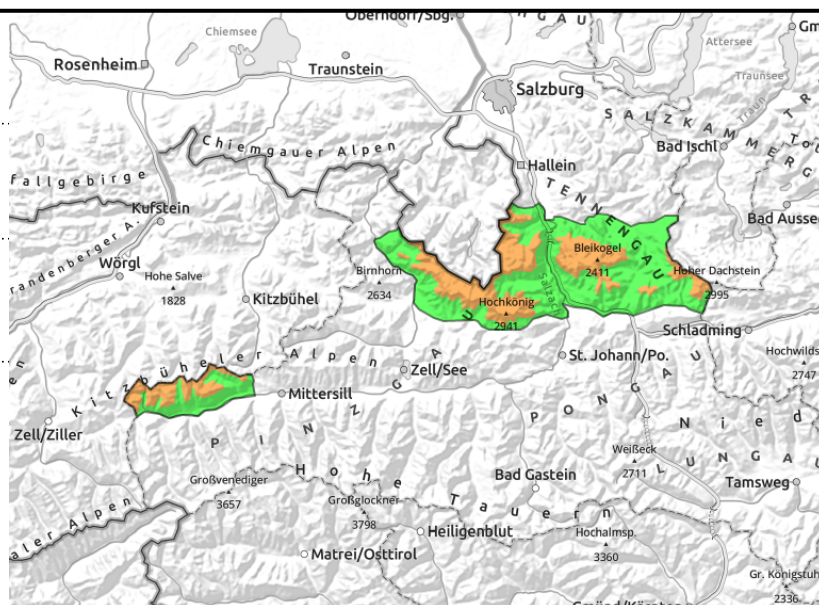
2000 m



easily triggerable in places above the timberline



from extremely steep grassy slopes



AVOID fresh snowdrifts in steep terrain

Fresh snowdrifts are found starting at the treeline in places. Above 2000 m they are often easily triggered. Even the impulse of one single person can trigger a medium-to-large sized slab. Aspects N/E/S are the most treacherous. The avalanche prone locations are easy to underestimate due to windblown terrain and generally rough ground surfaces in backcountry touring zones.

Second danger: very steep grassy slopes, where medium-sized glide-snow avalanches can trigger naturally.

Snowpack structure

The temperature fluctuations - first cold, then warm, then cold again - are stabilizing the snowpack. The problem today is the most recent snowfall (10-30 cm) which was transported by NW winds and deposited on top of cold powder snow.

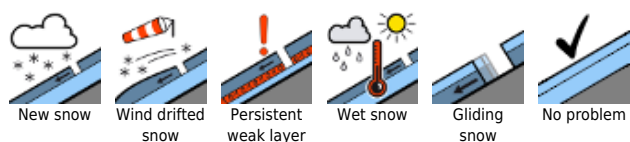
Weather

On Friday, snowfall with interims, also heavy cloud cover and residual fog will hinder visibility. As of midday the cloud cover will disperse somewhat, in afternoon it will turn sunny. In the morning, brisk winds (30 km/hr), slackening off in the afternoon. At 2000 m: -11 degrees, at 3000 m -18 degrees. On Saturday, overcast skies, most summits will be in the clear. Possible light snowfall at midday. Moderate southerly winds.

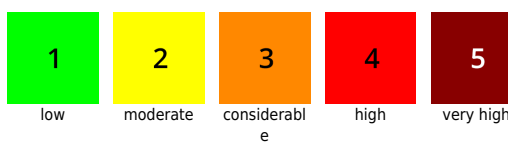
Outlook

Snowdrift problem will persist above about 2000 m. Moderate glide-snow activity below 2000 m.

Avalanche problems



Danger ratings

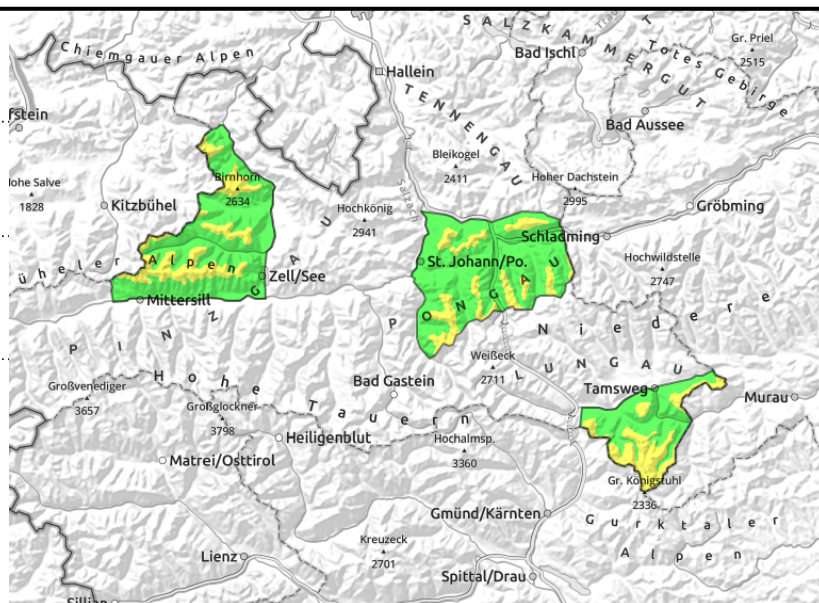
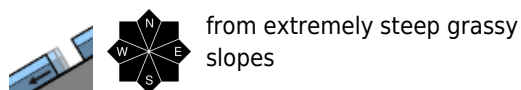


Expositions



03.12.2021

Loferer und Leoganger Steinberge, Kitzbüheler Alpen, Glemmtal, Niedere Tauern Nord, Pongauer Grasberge, Nockberge



Fresh snowdrifts above the treeline in steep gullies and bowls

Fresh snowdrifts are found starting at the treeline in places. With increasing altitude they are often easily triggered. Even the impulse of one single person can trigger a medium-to-large sized slab. But at least the snowdrift masses are easily recognized. Aspects N/E/S are the most treacherous. The avalanche prone locations are easy to underestimate due to windblown terrain and generally rough ground surfaces in backcountry touring zones.

Second danger: very steep grassy slopes, where medium-sized glide-snow avalanches can trigger naturally.

Snowpack structure

The temperature fluctuations - first cold, then warm, then cold again - are stabilizing the snowpack. The problem today is the most recent snowfall (10-20 cm) which was transported by NW winds and deposited on top of cold powder snow.

Weather

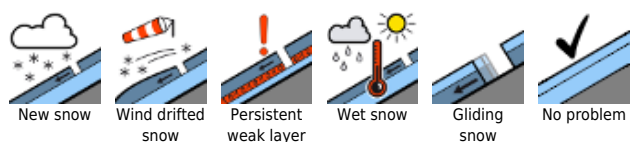
On Friday, snowfall with interims, also heavy cloud cover and residual fog will hinder visibility. As of midday the cloud cover will disperse somewhat, in afternoon it will turn sunny. In the morning, brisk winds (30 km/hr), slackening off in the afternoon. At 2000 m: -11 degrees, at 3000 m -18 degrees. On Saturday, overcast skies, most summits will be in the clear. Possible light snowfall at midday. Moderate southerly winds.

Outlook

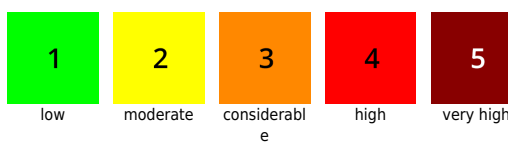
Snowdrift problem will persist above about 2000 m. Moderate glide-snow activity below 2000 m will persist.

Translated by Jeffrey McCabe, www.creativtrans.com

Avalanche problems



Danger ratings



Expositions

