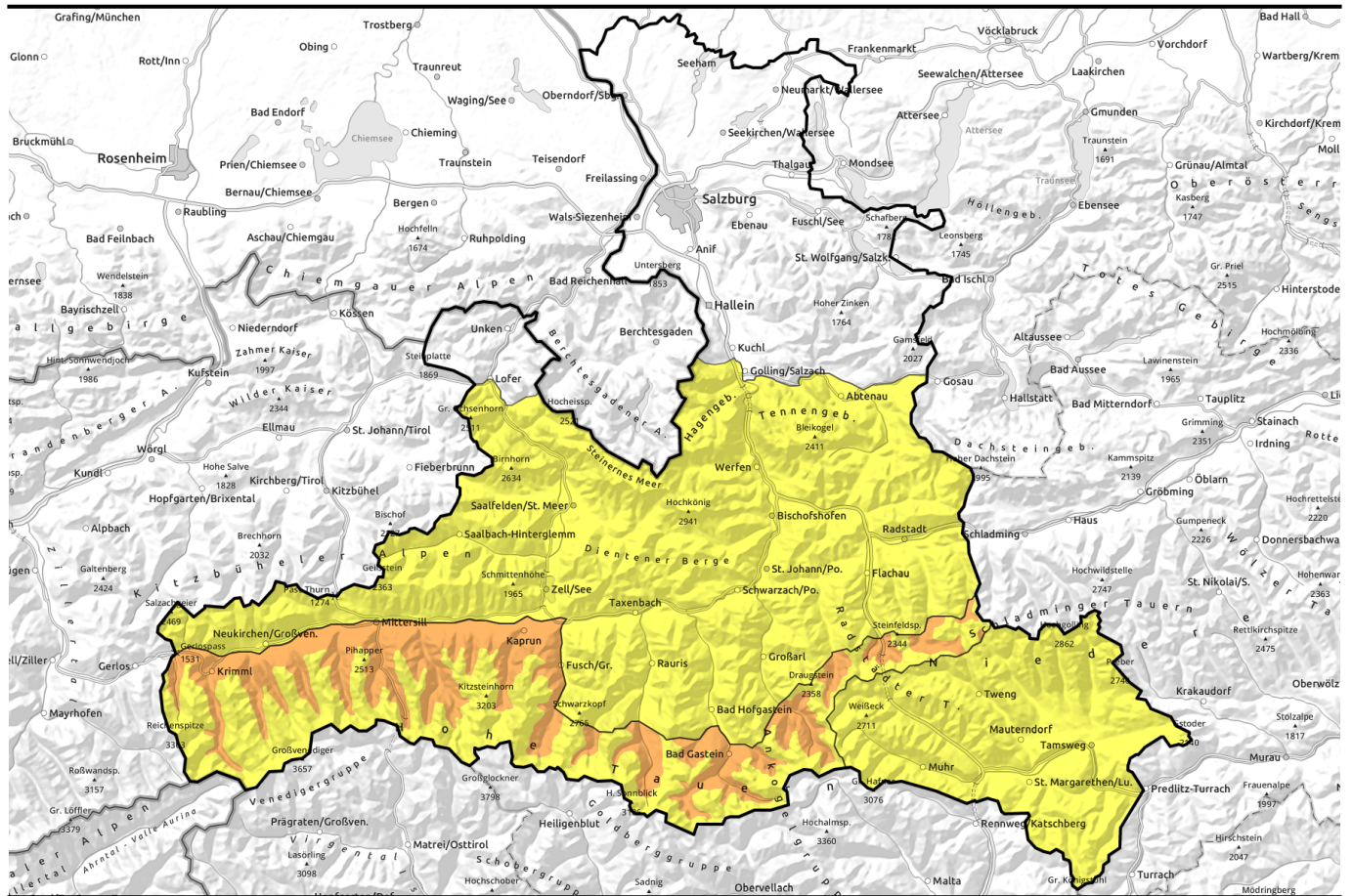


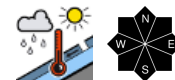
01.05.2021



Final avalanche bulletin of the season. Wet snow, very warm, unfavourable, cloudy nighttime skies.

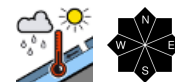


Loferer und Leoganger Steinberge, Steinernes Meer, Hochkönig, Hagengebirge, Göllstock, Tennengebirge, Gosaukamm, Pongauer Grasberge, Dientner Grasberge, Kitzbüheler Alpen, Glemmtal, Oberpinzgauer Grasberge, Niedere Tauern Nord, Goldberggruppe Nord, Niedere Tauern Süd, Nockberge, Ankogelgruppe, Muhr

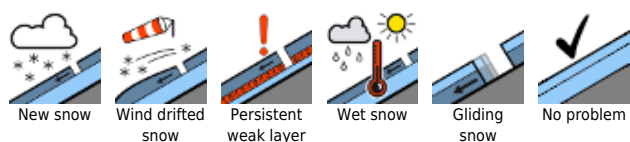


2700 m

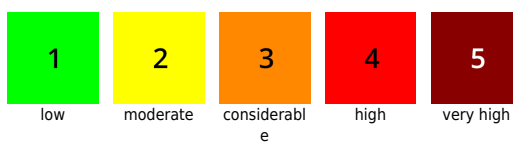
Großvenedigergruppe Nord, Glocknergruppe Nord, Großvenedigergruppe Alpenhauptkamm, Glocknergruppe Alpenhauptkamm, Goldberggruppe Alpenhauptkamm, Niedere Tauern Alpenhauptkamm



Avalanche problems



Danger ratings

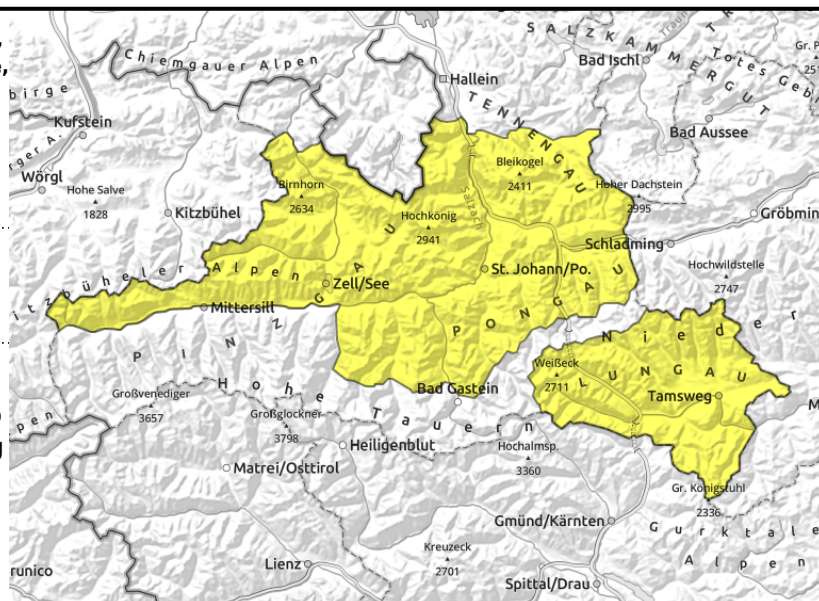


Expositions



01.05.2021

Loferer und Leoganger Steinberge, Steinernes Meer, Hochkönig, Hagengebirge, Göllstock, Tennengebirge, Gosaukamm, Pongauer Grasberge, Dientner Grasberge, Kitzbüheler Alpen, Glemmtal, Oberpinzgauer Grasberge, Niedere Tauern Nord, Goldberggruppe Nord, Niedere Tauern Süd, Nockberge, Ankogelgruppe, Muhr



due to heavy melting, additional water is seeping into the moist snowpack; no cooling off at night

Isolated wet-snow avalanches in very steep zones which have not yet discharged

Avalanche danger is MODERATE all day long. Slightly more favourable above 2600 m

Wet-snow problem: small-to-medium naturally triggered avalanches are possible in very-steep and extremely-steep terrain. Applies to zones which have not yet discharged and where there is still ample snow, in principle in all aspects below 2600 m, further up primarily in W-S-E aspects. A large-sized avalanche cannot be ruled out, but is likely only in W-N-E aspects.

Dry-snow avalanches: not relevant

Snowpack structure

Surface snow is soft already in early morning. Inside the snowpack, thoroughly moist up to high altitudes, and wet where there has been rainfall. With solar radiation and further rain showers, more water will seep into the snowpack.

Weather

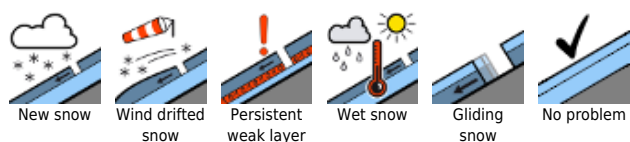
Following a mild night of overcast skies, **Saturday** will be foehn-influenced with scattered clouds, somewhat limited visibility due to residual fog or cloudbanks. Intermittent sunshine. In the afternoon, some massive convective clouds, a few rain showers are possible. Southerly foehn wind in the Tauern (50 km/hr, elsewhere at 30 km/hr). Temperature at 2000 m: 6 degrees; at 3000 m: -1 degree.

On Saturday night, rainfall up to 2400 m. On **Sunday**, poor visibility. Fog and clouds will dominate. Frequent rain/snow, the snowfall level descending to nearly 1400 m by evening. Winds will be strong from west to northwest. At 2000 m: -2 degrees; at 3000 m: -7 degrees.

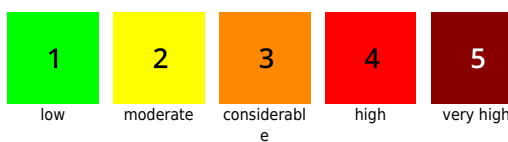
Outlook

On Sunday, unfavourable conditions. **Wet-snow situation**. The coming week will also be unfavourable. The nights are generally overcast. Warm and cool days will alternate. Possibly on Tuesday and Wednesday morning, decent conditions.

Avalanche problems



Danger ratings



Expositions



01.05.2021

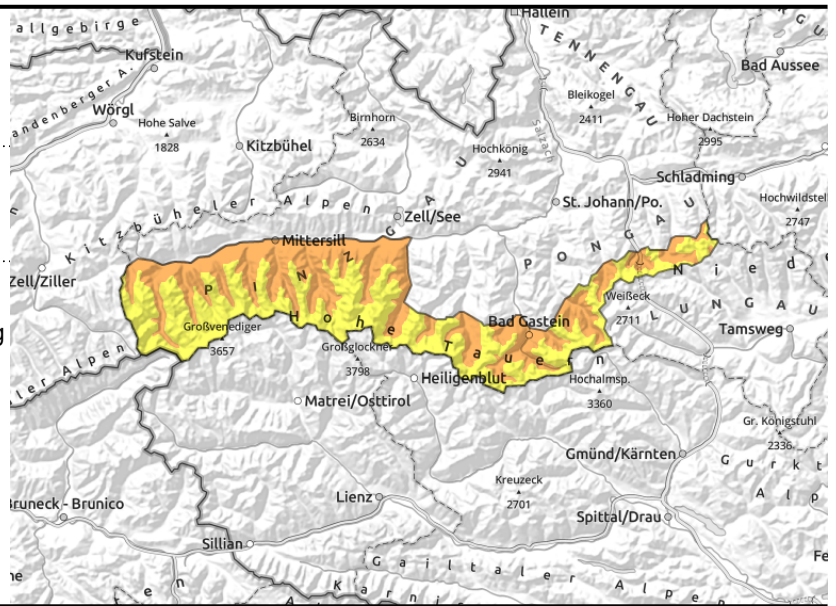
**Großvenedigergruppe Nord, Glocknergruppe Nord,
Großvenedigergruppe Alpenhauptkamm,
Glocknergruppe Alpenhauptkamm, Goldberggruppe
Alpenhauptkamm, Niedere Tauern Alpenhauptkamm**



2700 m



nighttime skies overcast, little cooling, heavy melting creating more water seepage into the moist snowpack



Naturally triggered avalanches possible on very steep slopes that have not yet discharged

Avalanche danger is CONSIDERABLE below 2700m. Further up, danger is MODERATE.

Wet-snow problem: small-to-medium naturally triggered avalanches are possible in very-steep and extremely-steep terrain. Applies to zones which have not yet discharged and where there is still ample snow (2000-2700m), in principle in all aspects below 2400 m, further up primarily in W-S-E aspects. A large-sized avalanche cannot be ruled out, but is likely only in W-N-E aspects.

Dry-snow avalanches: not relevant, apart from isolated snowdrift patches generated by foehn wind above 3400m in the Grossvenediger and Reichenspitze Massifs.

Snowpack structure

Surface snow is soft already in early morning. Inside the snowpack, thoroughly moist up to high altitudes, wet where there has been rainfall. With solar radiation and further rain showers, more water will seep into the snowpack.

Weather

Following a mild night of overcast skies, **Saturday** will be foehn-influenced with scattered clouds, somewhat limited visibility due to residual fog or cloudbanks. Intermittent sunshine. In the afternoon, a few massive convective clouds, a few rain showers are possible. Southerly foehn wind in the Tauern (50 km/hr, elsewhere at 30 km/hr). Temperature at 2000 m: 6 degrees; at 3000 m: -1 degree.

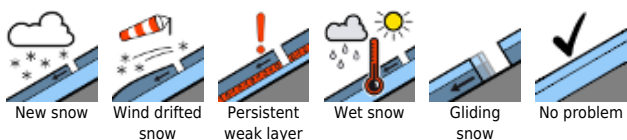
On Saturday night, rainfall up to 2400 m. On **Sunday**, poor visibility. Fog and clouds will dominate. Frequent rain/snow, the snowfall level descending to nearly 1400 m by evening. Winds will be strong from west to northwest. At 2000 m: -2 degrees; at 3000 m: -7 degrees.

Outlook

On Sunday, unfavourable conditions. **Wet-snow / moist-snow situation**. The coming week will also be unfavourable. The nights are generally overcast. Warm and cool days will alternate. Possibly on Tuesday and Wednesday morning, decent conditions.

Translated by Jeffrey McCabe, www.creativtrans.com

Avalanche problems



Danger ratings



Expositions

