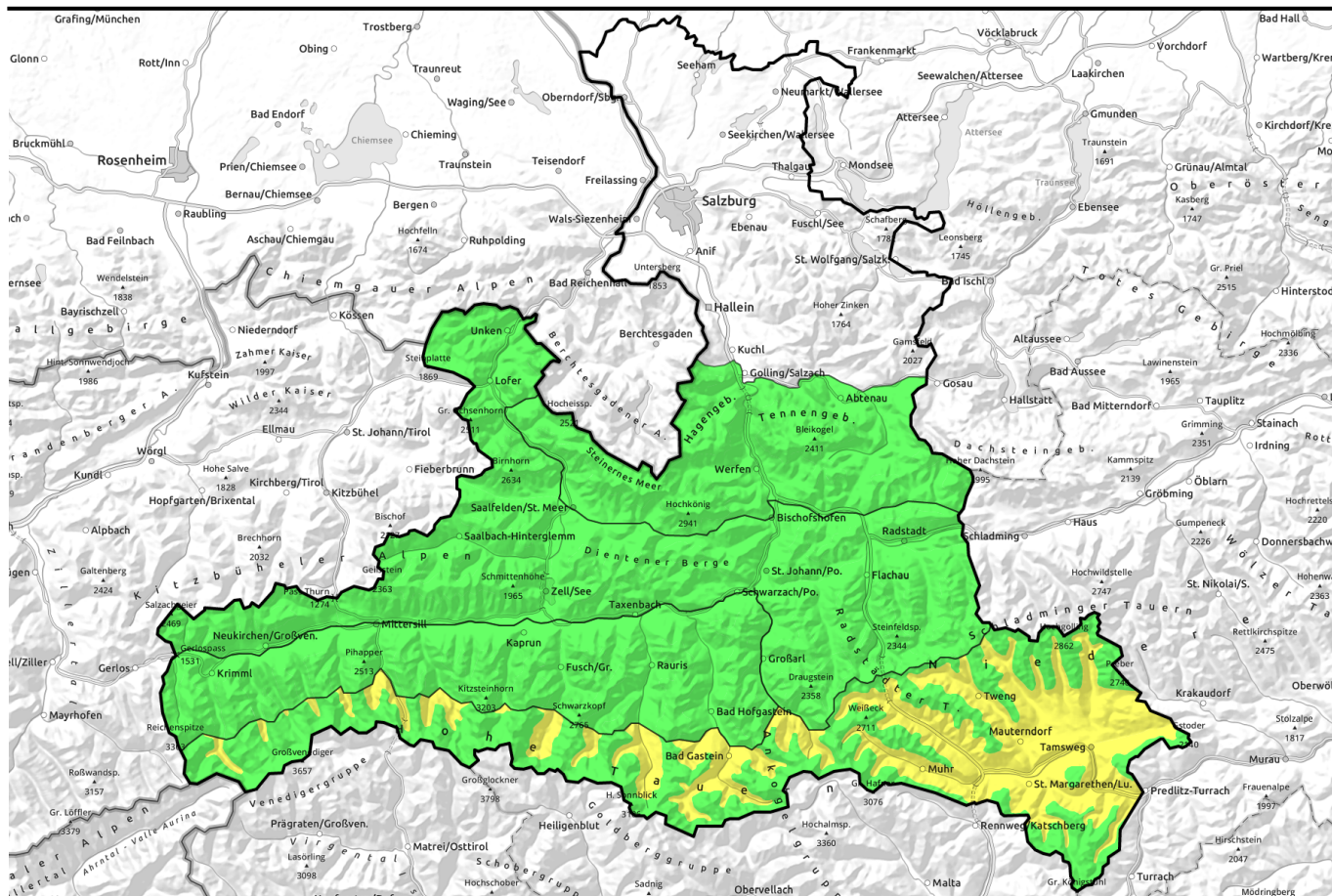


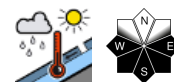
# 29.04.2021, morning



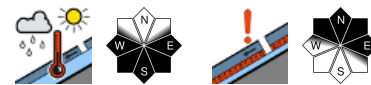
## Few reserves of cold in southern regions, initially more favourable north of the Tauern



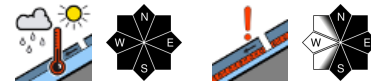
Loferer und Leoganger Steinberge, Kitzbüheler Alpen, Glemmtal, Oberpinzgauer Grasberge, Dientner Grasberge, Pongauer Grasberge, Niedere Tauern Nord, Chiemgauer Alpen, Heutal, Reiteralpe, Niedere Tauern Alpenhauptkamm



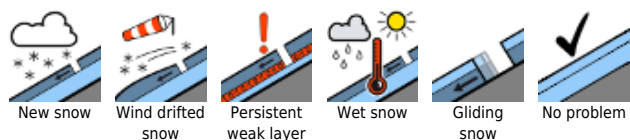
Steinernes Meer, Hochkönig, Hagengebirge, Göllstock, Tennengebirge, Gosaukamm, Großvenedigergruppe Nord, Glocknergruppe Nord, Goldberggruppe Nord



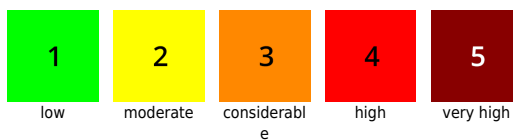
2000 m  
Ankogelgruppe, Muhr, Niedere Tauern Süd, Nockberge, Großvenedigergruppe Alpenhauptkamm, Goldberggruppe Alpenhauptkamm, Glocknergruppe Alpenhauptkamm



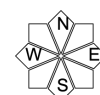
### Avalanche problems



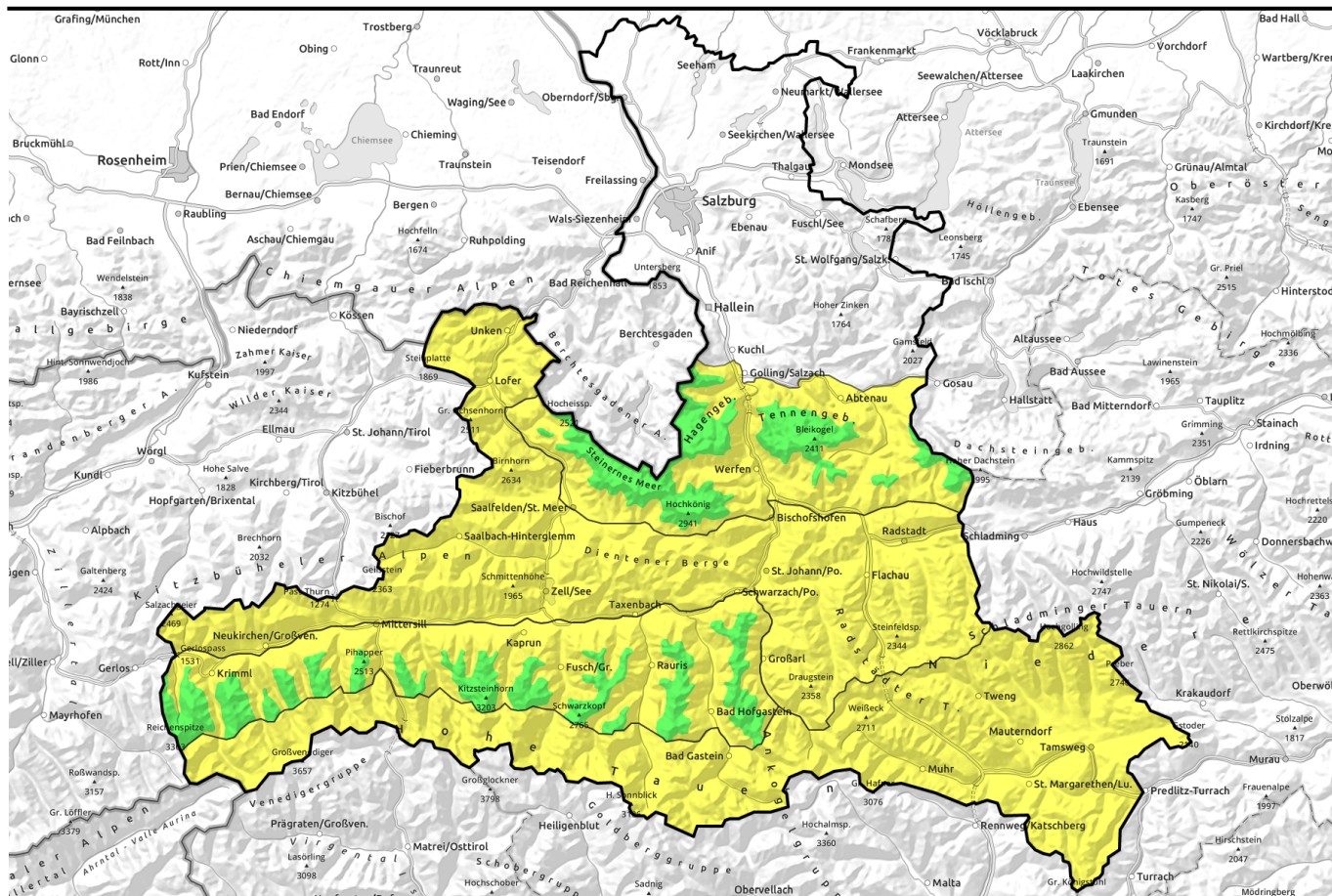
### Danger ratings



### Expositions



# 29.04.2021, afternoon



## Im Süden nur geringe Kälterereserve, nördlich der Tauern zunächst günstiger



Loferer und Leoganger Steinberge, Kitzbüheler Alpen, Glemmtal, Oberpinzgauer Grasberge, Dientner Grasberge, Pongauer Grasberge, Niedere Tauern Nord, Chiemgauer Alpen, Heutal, Reiteralpe, Niedere Tauern Alpenhauptkamm



Steinernes Meer, Hochkönig, Hagengebirge, Göllstock, Tennengebirge, Gosaukamm, Großvenedigergruppe Nord, Glocknergruppe Nord, Goldberggruppe Nord



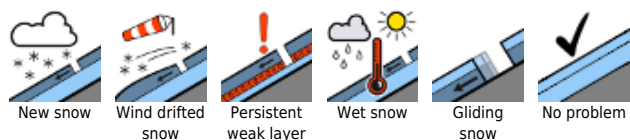
2500 m



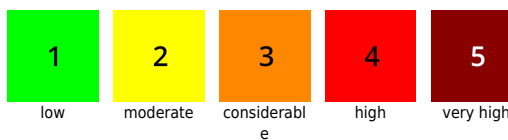
Ankogelgruppe, Muhr, Niedere Tauern Süd, Nockberge, Großvenedigergruppe Alpenhauptkamm, Goldberggruppe Alpenhauptkamm, Glocknergruppe Alpenhauptkamm



### Avalanche problems



### Danger ratings

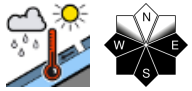
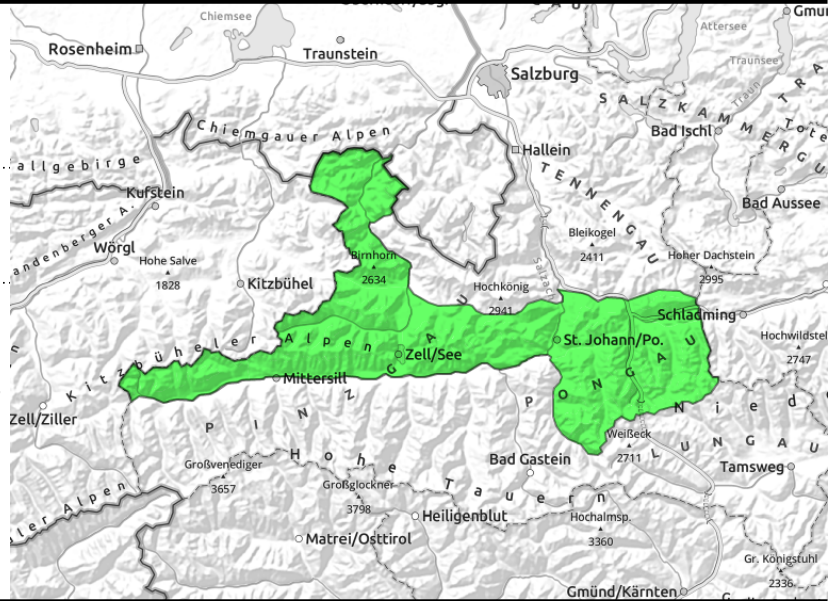


### Expositions



# 29.04.2021, morning

**Loferer und Leoganger Steinberge, Kitzbüheler Alpen, Glemmtal, Oberpinzgauer Grasberge, Dientner Grasberge, Pongauer Grasberge, Niedere Tauern Nord, Chiemgauer Alpen, Heutal, Reiteralpe, Niedere Tauern Alpenhauptkamm**



loss of snowpack firmness due to sunshine, timing and intensity depend on steepness, altitude and aspect

## Transformation to firn snow often delayed due to clouds

Avalanche danger in the morning is LOW, then rises to MODERATE at midday.

Wet-snow problem: the main problem persists. A few small-to-medium naturally triggered avalanches in very-steep to extremely-steep terrain, limited to W-S-E aspects up to 1800m. An isolated large-sized avalanche cannot be ruled out, but will be rare.

Dry-snow avalanches: slightly raised risk in extremely-steep and ridgeline terrain, particularly where the snow is shallow in northern and eastern aspects above 2400 m.

## Snowpack structure

In early morning, melt-freeze crusts capable of bearing loads dominate, on north-facing slopes there is also breakable melt-freeze snow. As a result of solar radiation, the uppermost layers then soften up on sunny slopes and at lower altitudes with varying speed and varying depth.

Fracture points for slab avalanches lie near the melt-freeze crusts between the latest rounds of snowfall above 2400 m.

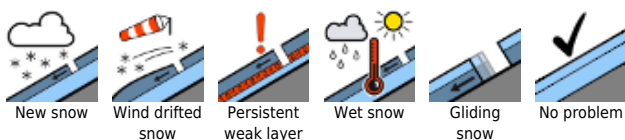
## Weather

On **Thursday** following a night of clear skies, initially good visibility and intermittent sunshine, accompanied by phases of heavy clouds. Southerly foehn winds will continue (30-50 km/hr) in the Tauern, elsewhere winds will not disturb. Temperatures ongoingly mild: at 2000 m from 0 to 5 degrees; at 3000 m, at -3 degrees. Towards evening, rising danger of showers and thunderstorms. On **Thursday night**, a weak cold front will bring rain showers to high altitude regions. During the daytime on Friday, further showers, snowfall starting at 2200 m. Southerly foehn winds will persist.

## Outlook

On Friday, lots of breakable crusts and a marked wet-snow problem below at least 2200 m.

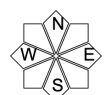
### Avalanche problems



### Danger ratings

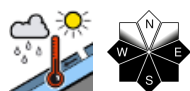


### Expositions

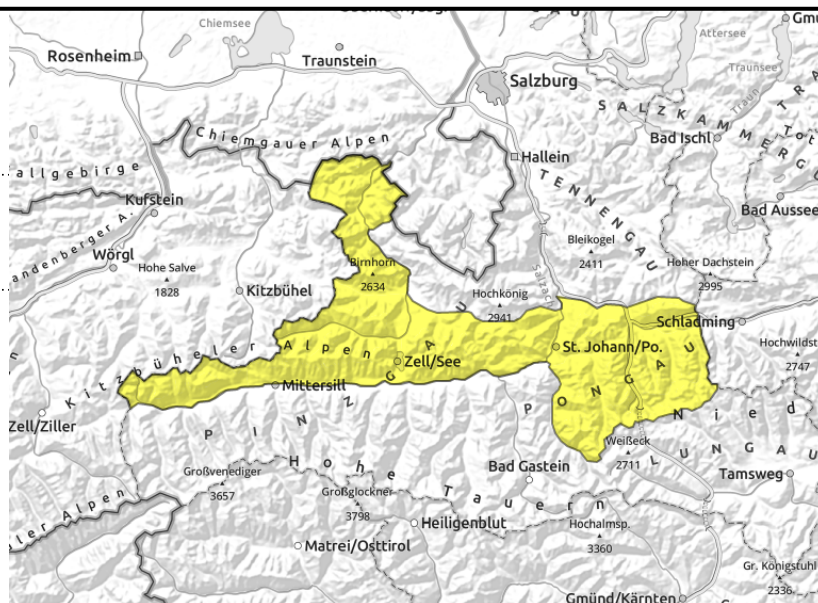


# 29.04.2021, afternoon

**Loferer und Leoganger Steinberge, Kitzbüheler Alpen, Glemmtal, Oberpinzgauer Grasberge, Dientner Grasberge, Pongauer Grasberge, Niedere Tauern Nord, Chiemgauer Alpen, Heutal, Reiteralpe, Niedere Tauern Alpenhauptkamm**



loss of snowpack firmness due to sunshine, timing and intensity depend on steepness, altitude and aspect



## Transformation to firn snow often delayed due to clouds

Avalanche danger in the morning is LOW, then rises to MODERATE at midday.

Wet-snow problem: the main problem persists. A few small-to-medium naturally triggered avalanches in very-steep to extremely-steep terrain, limited to W-S-E aspects up to 1800m. An isolated large-sized avalanche cannot be ruled out, but will be rare.

Dry-snow avalanches: slightly raised risk in extremely-steep and ridgeline terrain, particularly where the snow is shallow in northern and eastern aspects above 2400 m.

## Snowpack structure

In early morning, melt-freeze crusts capable of bearing loads dominate, on north-facing slopes there is also breakable melt-freeze snow. As a result of solar radiation, the uppermost layers then soften up on sunny slopes and at lower altitudes with varying speed and varying depth.

Fracture points for slab avalanches lie near the melt-freeze crusts between the latest rounds of snowfall above 2400 m.

## Weather

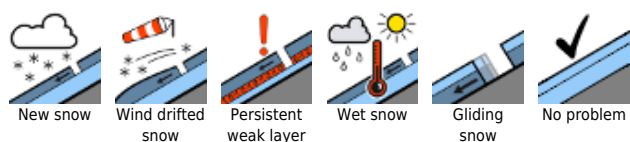
On **Thursday** following a night of clear skies, initially good visibility and intermittent sunshine, accompanied by phases of heavy clouds. Southerly foehn winds will continue (30-50 km/hr) in the Tauern, elsewhere winds will not disturb. Temperatures ongoingly mild: at 2000 m from 0 to 5 degrees; at 3000 m, at -3 degrees. Towards evening, rising danger of showers and thunderstorms.

On **Thursday night**, a weak cold front will bring rain showers to high altitude regions. During the daytime on Friday, further showers, snowfall starting at 2200 m. Southerly foehn winds will persist.

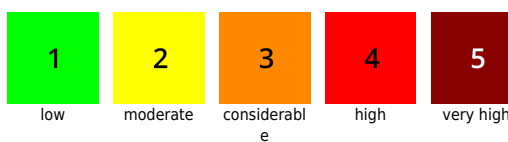
## Outlook

On Friday, lots of breakable crusts and a marked wet-snow problem below at least 2200 m.

### Avalanche problems



### Danger ratings



### Expositions



# 29.04.2021, morning

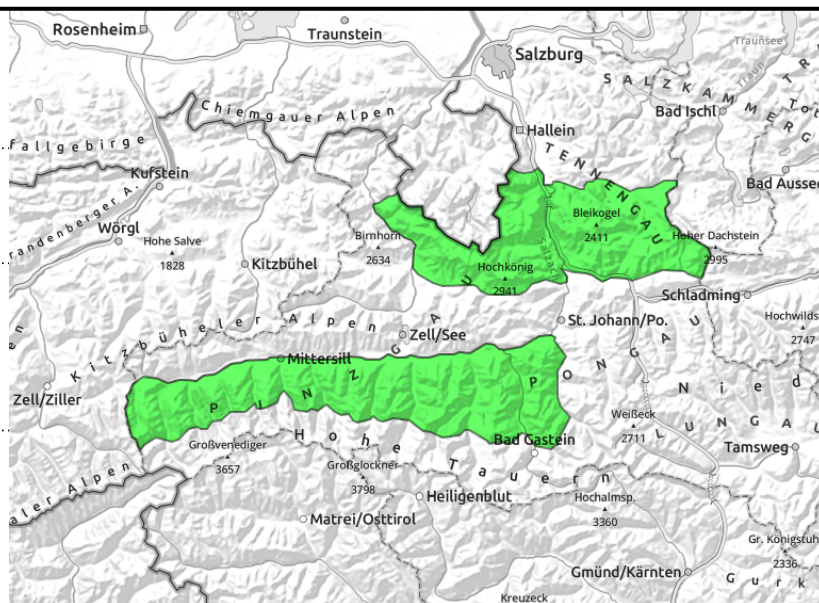
**Steinernes Meer, Hochkönig, Hagengebirge, Göllstock, Tennengebirge, Gosaukamm, Großvenedigergruppe Nord, Glocknergruppe Nord, Goldberggruppe Nord**



Loss of snowpack firmness up to 2500 m due to sunshine, timing and intensity depend on steepness, altitude and aspect



few spots, near ridges, shady terrain, above 2400 m



## Daytime loss of firmness up to 2500 m

Avalanche danger in the morning is LOW, then rises to MODERATE below 2500 m at midday. In high alpine regions avalanche danger is LOW all day long, with only few avalanche prone locations. Wet-snow problem: the main problem persists. A few small-to-medium naturally triggered avalanches in very-steep to extremely-see terrain, limited to W-S-E aspects up to 1800m. An isolated large-sized naturally triggered avalanche cannot be ruled out.

Dry-snow avalanches: a secondary theme, striking only few spots in high alpine terrain. Triggering points exist above 2400 m in very steep and ridgeline terrain. Caution urged in transitions from shallow to deep snow, where snow is shallow, especially in extended N-E aspects.

## Snowpack structure

On south-facing slopes and north-facing slopes below 2000 m, the snow is hard in early morning. A few hundred metres further up there are breakable crusts, also dry powder on north-facing and high-alpine slopes. As a result of solar radiation the uppermost layers soften up varyingly quickly and varyingly deeply.

Slight weak layers for potential fractures in slab avalanche releases exist in high alpine regions in the uppermost 20-30 cm of the snowpack near melt-freeze crusts between the lasted rounds of recent snowfall.

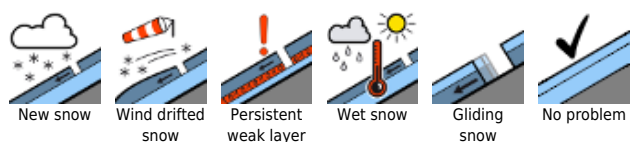
## Weather

On **Thursday** following a night of clear skies, initially good visibility and intermittent sunshine, accompanied by phases of heavy clouds. Southerly foehn winds will continue (30-50 km/hr) in the Tauern, elsewhere winds will not disturb. Temperatures ongoingly mild: at 2000 m from 0 to 5 degrees; at 3000 m, at -3 degrees. Towards evening, rising danger of showers and thunderstorms. On **Thursday night**, a weak cold front will bring rain showers to high altitude regions. During the daytime on Friday, further showers, snowfall starting at 2200 m. Southerly foehn winds will persist.

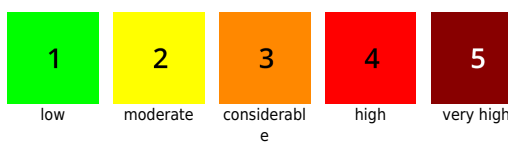
## Outlook

On Friday, lots of breakable crusts and a marked wet-snow problem below at least 2200 m.

### Avalanche problems



### Danger ratings





### Expositions





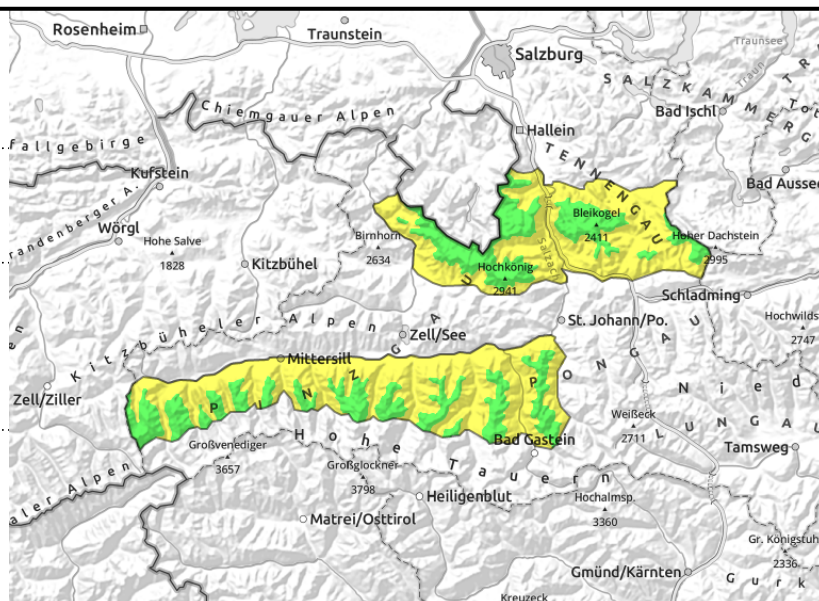
# 29.04.2021, afternoon

**Steinernes Meer, Hochkönig, Hagengebirge, Göllstock, Tennengebirge, Gosaukamm, Großvenedigergruppe Nord, Glocknergruppe Nord, Goldberggruppe Nord**



  Loss of snowpack firmness up to 2500 m due to sunshine, timing and intensity depend on steepness, altitude and aspect

  few spots, near ridges, shady terrain, above 2400 m



## Daytime loss of firmness up to 2500 m

Avalanche danger in the morning is LOW, then rises to MODERATE below 2500 m at midday. In high alpine regions avalanche danger is LOW all day long, with only few avalanche prone locations. Wet-snow problem: the main problem persists. A few small-to-medium naturally triggered avalanches in very-steep to extremely-see terrain, limited to W-S-E aspects up to 1800m. An isolated large-sized naturally triggered avalanche cannot be ruled out.

Dry-snow avalanches: a secondary theme, striking only few spots in high alpine terrain. Triggering points exist above 2400 m in very steep and ridgeline terrain. Caution urged in transitions from shallow to deep snow, where snow is shallow, especially in extended N-E aspects.

## Snowpack structure

On south-facing slopes and north-facing slopes below 2000 m, the snow is hard in early morning. A few hundred metres further up there are breakable crusts, also dry powder on north-facing and high-alpine slopes. As a result of solar radiation the uppermost layers soften up varyingly quickly and varyingly deeply.

Slight weak layers for potential fractures in slab avalanche releases exist in high alpine regions in the uppermost 20-30 cm of the snowpack near melt-freeze crusts between the lasted rounds of recent snowfall.

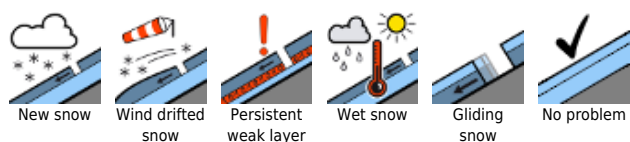
## Weather

On **Thursday** following a night of clear skies, initially good visibility and intermittent sunshine, accompanied by phases of heavy clouds. Southerly foehn winds will continue (30-50 km/hr) in the Tauern, elsewhere winds will not disturb. Temperatures ongoingly mild: at 2000 m from 0 to 5 degrees; at 3000 m, at -3 degrees. Towards evening, rising danger of showers and thunderstorms. On **Thursday night**, a weak cold front will bring rain showers to high altitude regions. During the daytime on Friday, further showers, snowfall starting at 2200 m. Southerly foehn winds will persist.

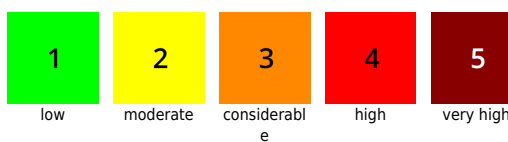
## Outlook

On Friday, lots of breakable crusts and a marked wet-snow problem below at least 2200 m.

### Avalanche problems



### Danger ratings

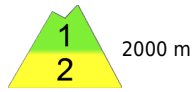


### Expositions



# 29.04.2021, morning

**Ankogelgruppe, Muhr, Niedere Tauern Süd, Nockberge, Großvenedigergruppe Alpenhauptkamm, Goldberggruppe Alpenhauptkamm, Glocknergruppe Alpenhauptkamm**



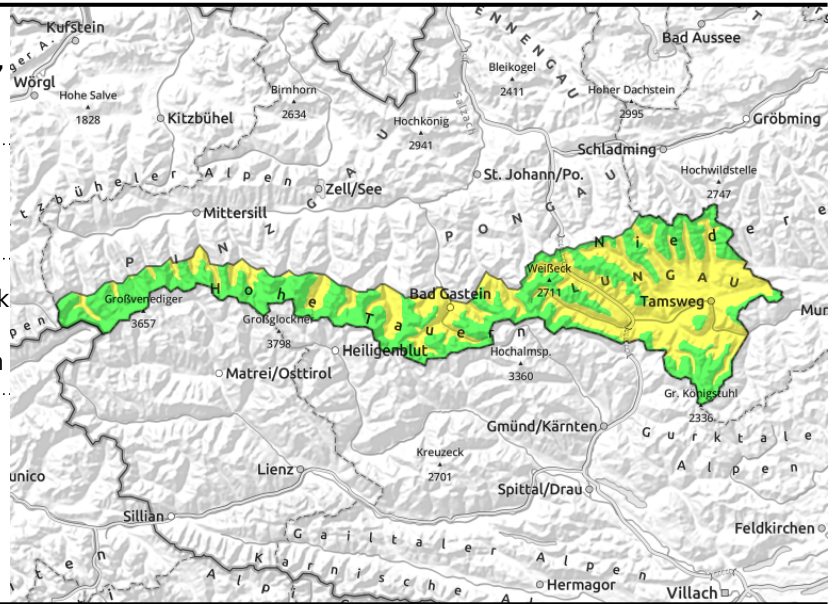
2000 m



Inadequate nocturnal snowpack cooling: loss of snowpack daytime firmness up to 2500 m



few spots, above 2400 m



## Moderate wet-snow problem already in the morning

Avalanche danger in the morning is LOW, then rises to MODERATE up to 2500 m at midday.

Wet-snow problem: the main problem persists. A few small-to-medium naturally triggered avalanches in very-steep to extremely-steep terrain, limited to W-S-E aspects up to 1800m. An isolated large-sized avalanche cannot be ruled out, but will be rare.

Dry-snow avalanches: slightly raised risk in extremely-steep and ridgeline terrain, particularly where the snow is shallow in S-E-N aspects.

### Snowpack structure

Below 2000 m the snow in early morning is often breakable, reserves of cold are low. At high altitudes there is still dry powder. The snowpack softens up varyingly quickly and varyingly deeply in accord with the path of the sun.

Slight weak layers for potential fractures in slab avalanche releases exist in high alpine regions in the uppermost 20-30 cm of the snowpack near melt-freeze crusts between the lasted rounds of recent snowfall.

### Weather

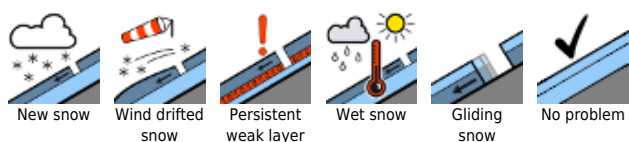
On **Thursday** following a night of clear skies, initially good visibility and intermittent sunshine, accompanied by phases of heavy clouds. Southerly foehn winds will continue (30-50 km/hr) in the Tauern, elsewhere winds will not disturb. Temperatures ongoingly mild: at 2000 m from 0 to 5 degrees; at 3000 m, at -3 degrees. Towards evening, rising danger of showers and thunderstorms.

On **Thursday night**, a weak cold front will bring rain showers to high altitude regions. During the daytime on Friday, further showers, snowfall starting at 2200 m. Southerly foehn winds will persist at 40-60-km/hr.

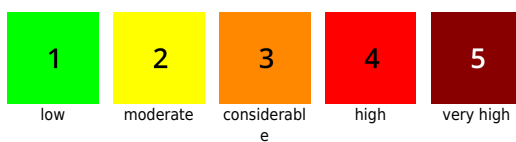
### Outlook

On Friday, lots of breakable crusts and a marked wet-snow problem below at least 2200 m.

#### Avalanche problems



#### Danger ratings



#### Expositions



# 29.04.2021, afternoon

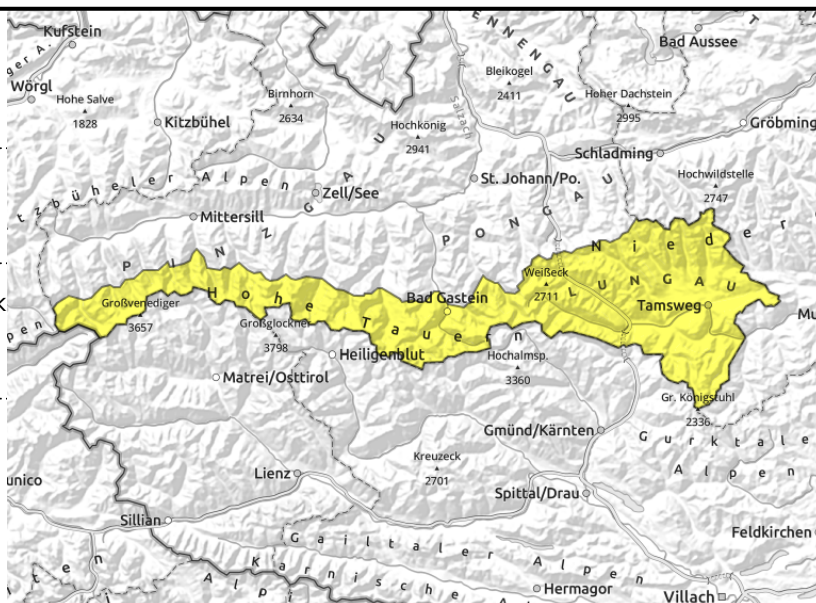
**Ankogelgruppe, Muhr, Niedere Tauern Süd, Nockberge, Großvenedigergruppe Alpenhauptkamm, Goldberggruppe Alpenhauptkamm, Glocknergruppe Alpenhauptkamm**



Inadequate nocturnal snowpack cooling: loss of snowpack daytime firmness up to 2500 m



few spots, above 2400 m



## Moderate wet-snow problem already in the morning

Avalanche danger in the morning is LOW, then rises to MODERATE up to 2500 m at midday.

Wet-snow problem: the main problem persists. A few small-to-medium naturally triggered avalanches in very-steep to extremely-steep terrain, limited to W-S-E aspects up to 1800m. An isolated large-sized avalanche cannot be ruled out, but will be rare.

Dry-snow avalanches: slightly raised risk in extremely-steep and ridgeline terrain, particularly where the snow is shallow in S-E-N aspects.

### Snowpack structure

Below 2000 m the snow in early morning is often breakable, reserves of cold are low. At high altitudes there is still dry powder. The snowpack softens up varyingly quickly and varyingly deeply in accord with the path of the sun.

Slight weak layers for potential fractures in slab avalanche releases exist in high alpine regions in the uppermost 20-30 cm of the snowpack near melt-freeze crusts between the lasted rounds of recent snowfall.

### Weather

On **Thursday** following a night of clear skies, initially good visibility and intermittent sunshine, accompanied by phases of heavy clouds. Southerly foehn winds will continue (30-50 km/hr) in the Tauern, elsewhere winds will not disturb. Temperatures ongoingly mild: at 2000 m from 0 to 5 degrees; at 3000 m, at -3 degrees. Towards evening, rising danger of showers and thunderstorms.

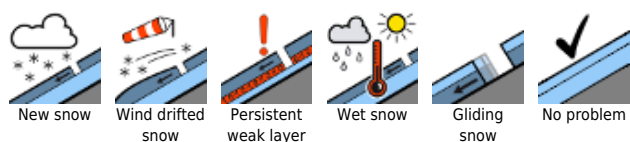
On **Thursday night**, a weak cold front will bring rain showers to high altitude regions. During the daytime on Friday, further showers, snowfall starting at 2200 m. Southerly foehn winds will persist at 40-60-km/hr.

### Outlook

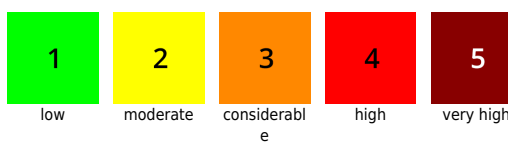
On Friday, lots of breakable crusts and a marked wet-snow problem below at least 2200 m.

Translated by Jeffrey McCabe, [www.creativtrans.com](http://www.creativtrans.com)

#### Avalanche problems



#### Danger ratings



#### Expositions

