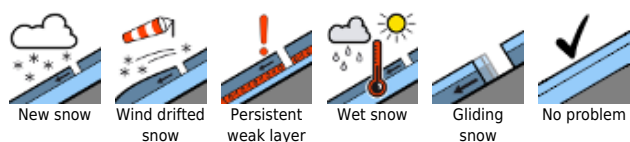


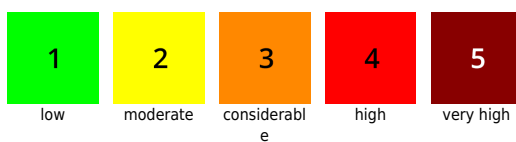
## In the Lungau only few reserves of cold, initially more favourable north of Main Tauern Ridge

	<p>Loferer und Leoganger Steinberge, Kitzbüheler Alpen, Glemmtal, Oberpinzgauer Grasberge, Dientner Grasberge, Pongauer Grasberge, Niedere Tauern Nord, Chiemgauer Alpen, Heutal, Reiteralpe, Niedere Tauern Alpenhauptkamm</p>				
	<p>Steinernes Meer, Hochkönig, Hagengebirge, Göllstock, Tennengebirge, Gosaukamm, Großvenedigergruppe Nord, Glocknergruppe Nord, Goldberggruppe Nord, Großvenedigergruppe Alpenhauptkamm, Glocknergruppe Alpenhauptkamm, Goldberggruppe Alpenhauptkamm</p>				
	<p>Ankogelgruppe, Muhr, Niedere Tauern Süd, Nockberge</p>				

### Avalanche problems



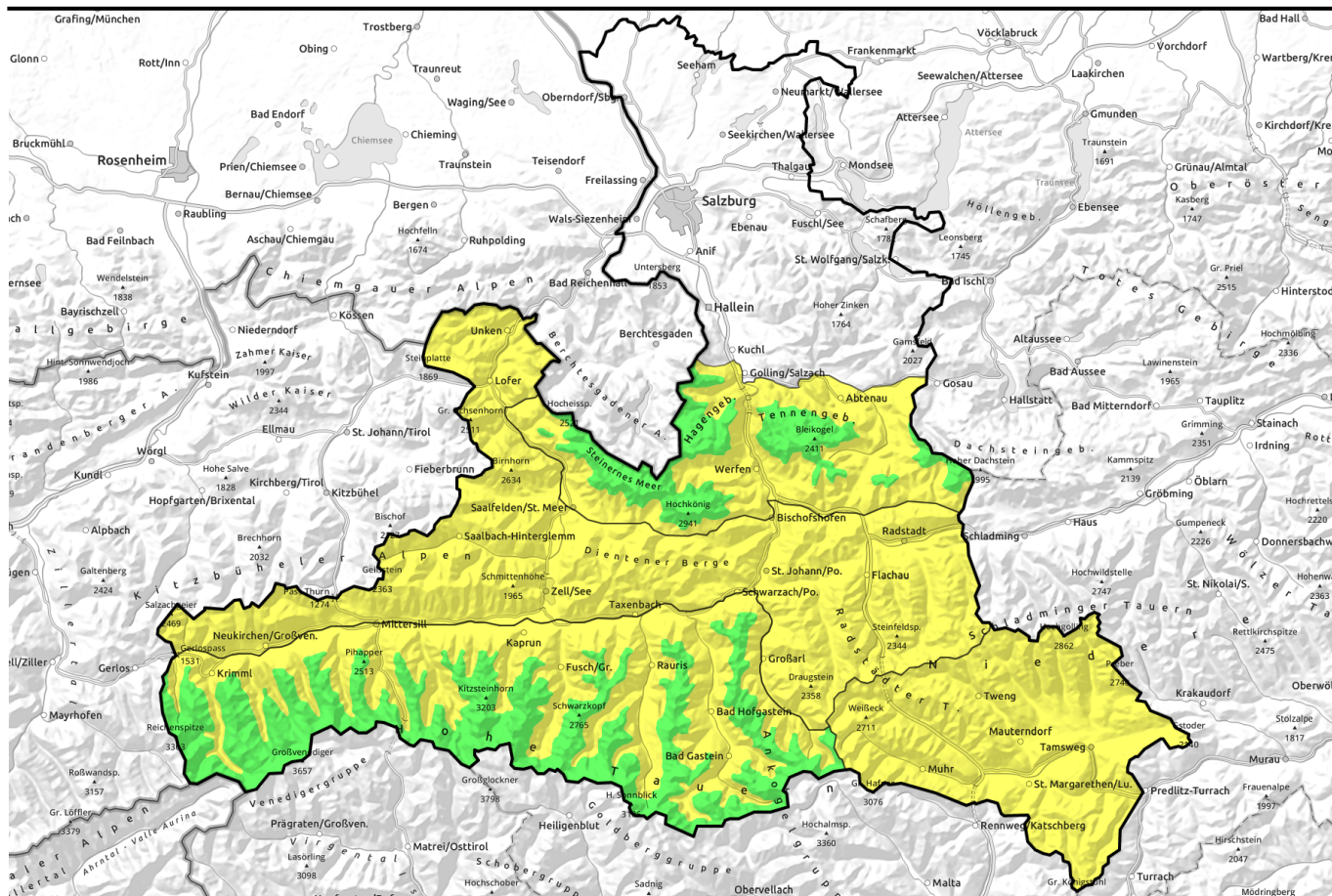
### Danger ratings



### Expositions



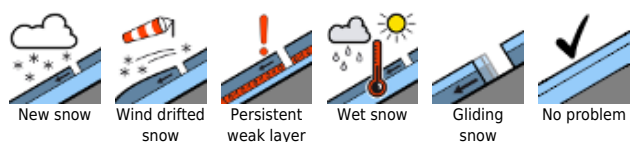
# 28.04.2021 through 29.04.2021, afternoon



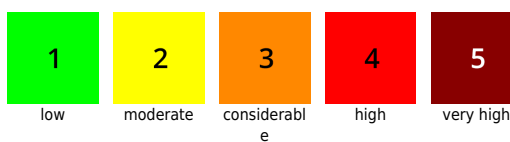
## Im Lungau nur geringe Kältereserve, vom Tauernhauptkamm nordwärts zunächst günstiger

	<p>Loferer und Leoganger Steinberge, Kitzbüheler Alpen, Glemmtal, Oberpinzgauer Grasberge, Dientner Grasberge, Pongauer Grasberge, Niedere Tauern Nord, Chiemgauer Alpen, Heutal, Reiteralpe, Niedere Tauern Alpenhauptkamm</p>	
<p>2500 m</p>	<p>Steinernes Meer, Hochkönig, Hagengebirge, Göllstock, Tennengebirge, Gosaukamm, Großvenedigergruppe Nord, Glocknergruppe Nord, Goldberggruppe Nord, Großvenedigergruppe Alpenhauptkamm, Glocknergruppe Alpenhauptkamm, Goldberggruppe Alpenhauptkamm</p>	
	<p>Ankogelgruppe, Muhr, Niedere Tauern Süd, Nockberge</p>	

### Avalanche problems



### Danger ratings

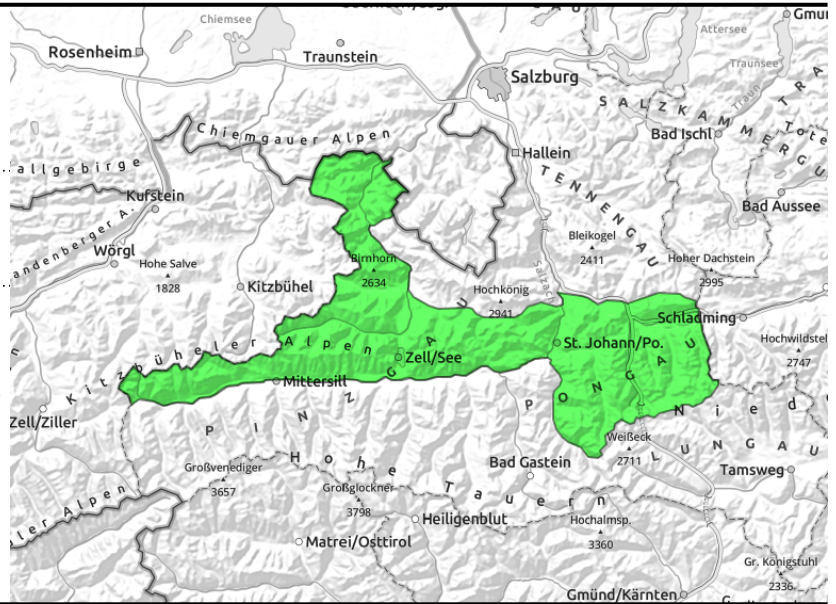


### Expositions



# 28.04.2021 through 29.04.2021, morning

**Loferer und Leoganger Steinberge, Kitzbüheler Alpen, Glemmtal, Oberpinzgauer Grasberge, Dientner Grasberge, Pongauer Grasberge, Niedere Tauern Nord, Chiemgauer Alpen, Heutal, Reiteralpe, Niedere Tauern Alpenhauptkamm**



loss of snowpack firmness due to sunshine, timing and intensity depend on steepness, altitude and aspect

## Marked daytime cycle, more intense than on previous days

Avalanche danger in the morning is LOW, then rises to MODERATE at midday.

Wet-snow problem: the main problem persists. A few small-to-medium naturally triggered avalanches in very-steep to extremely-steep terrain, limited to W-S-E aspects up to 1800m. An isolated large-sized avalanche cannot be ruled out, but will be rare.

Dry-snow avalanches: slightly raised risk in extremely-steep and ridgeline terrain, particularly where the snow is shallow in northern and eastern aspects above 2400 m.

### Snowpack structure

In early morning, melt-freeze crusts capable of bearing loads dominate, on north-facing slopes there is also breakable melt-freeze snow. As a result of solar radiation, the uppermost layers then soften up on sunny slopes and at lower altitudes with varying speed and varying depth.

Fracture points for slab avalanches lie near the melt-freeze crusts between the latest rounds of snowfall above 2400 m.

### Weather

Following a night with only scattered clouds and adequate outgoing longwave radiation, on **Wednesday** sunshine and convective clouds will alternate. It is expected to remain dry. Mostly light winds, in the Niedere Tauern southerly foehn wind will blow at 30-40 km/hr. At 2000 m 2-6 degrees; at 3000 m, -3 degrees.

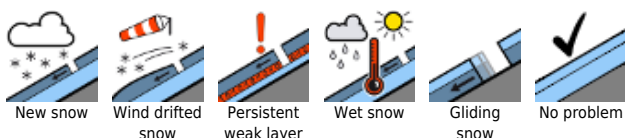
On **Thursday**, following a night of clear skies, initially good visibility and intermittent sunshine, but phases of dense high-altitude cloudbanks. Southerly foehn winds will continue in the Tauern.

Temperatures will remain mild. On **Thursday night** a weak cold front with rain showers will pass through the high altitude regions. During the daytime, initially lots of clouds and light showers (snowfall level above 1600-2000 m), more pleasant conditions are expected in the afternoon.

### Outlook

On Thursday, no significant change is anticipated. Amid dense high-altitude cloudbanks, the snow will transform to firm somewhat later.

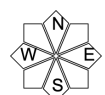
#### Avalanche problems



#### Danger ratings

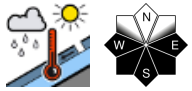
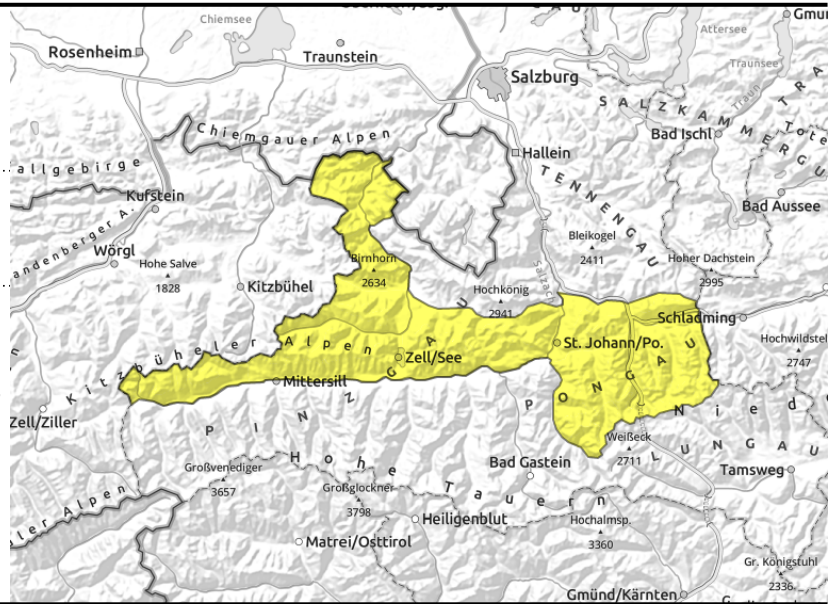


#### Expositions



# 28.04.2021 through 29.04.2021, afternoon

**Loferer und Leoganger Steinberge, Kitzbüheler Alpen, Glemmtal, Oberpinzgauer Grasberge, Dientner Grasberge, Pongauer Grasberge, Niedere Tauern Nord, Chiemgauer Alpen, Heutal, Reiteralpe, Niedere Tauern Alpenhauptkamm**



loss of snowpack firmness due to sunshine, timing and intensity depend on steepness, altitude and aspect

## Marked daytime cycle, more intense than on previous days

Avalanche danger in the morning is LOW, then rises to MODERATE at midday.

Wet-snow problem: the main problem persists. A few small-to-medium naturally triggered avalanches in very-steep to extremely-steep terrain, limited to W-S-E aspects up to 1800m. An isolated large-sized avalanche cannot be ruled out, but will be rare.

Dry-snow avalanches: slightly raised risk in extremely-steep and ridgeline terrain, particularly where the snow is shallow in northern and eastern aspects above 2400 m.

### Snowpack structure

In early morning, melt-freeze crusts capable of bearing loads dominate, on north-facing slopes there is also breakable melt-freeze snow. As a result of solar radiation, the uppermost layers then soften up on sunny slopes and at lower altitudes with varying speed and varying depth.

Fracture points for slab avalanches lie near the melt-freeze crusts between the latest rounds of snowfall above 2400 m.

### Weather

Following a night with only scattered clouds and adequate outgoing longwave radiation, on **Wednesday** sunshine and convective clouds will alternate. It is expected to remain dry. Mostly light winds, in the Niedere Tauern southerly foehn wind will blow at 30-40 km/hr. At 2000 m 2-6 degrees; at 3000 m, -3 degrees.

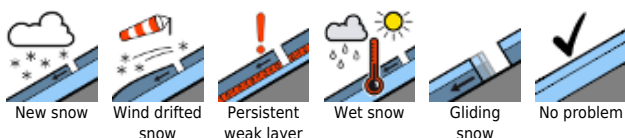
On **Thursday**, following a night of clear skies, initially good visibility and intermittent sunshine, but phases of dense high-altitude cloudbanks. Southerly foehn winds will continue in the Tauern.

Temperatures will remain mild. On **Thursday night** a weak cold front with rain showers will pass through the high altitude regions. During the daytime, initially lots of clouds and light showers (snowfall level above 1600-2000 m), more pleasant conditions are expected in the afternoon.

### Outlook

On Thursday, no significant change is anticipated. Amid dense high-altitude cloudbanks, the snow will transform to firm somewhat later.

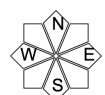
#### Avalanche problems



#### Danger ratings

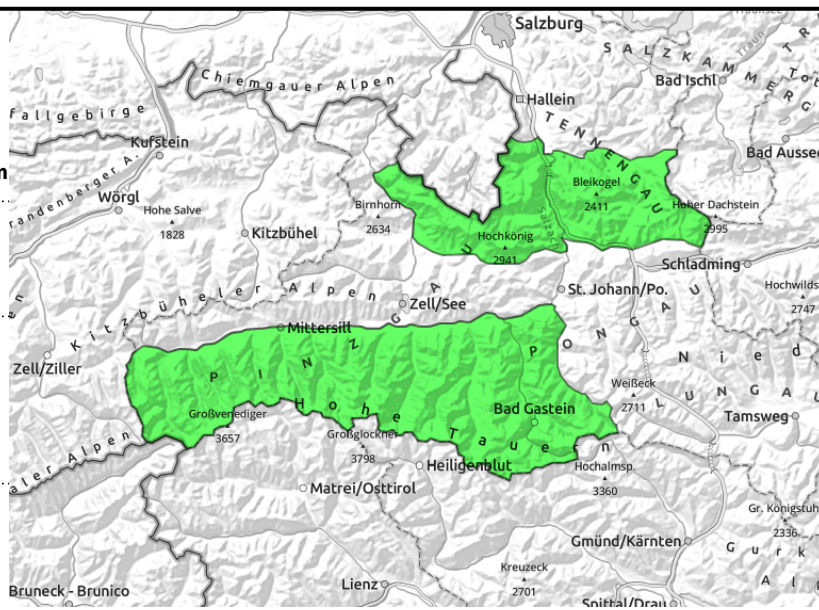


#### Expositions



# 28.04.2021 through 29.04.2021, morning

Steinernes Meer, Hochkönig, Hagengebirge, Göllstock, Tennengebirge, Gosaukamm, Großvenedigergruppe Nord, Glocknergruppe Nord, Goldberggruppe Nord, Großvenedigergruppe Alpenhauptkamm, Glocknergruppe Alpenhauptkamm, Goldberggruppe Alpenhauptkamm



Loss of snowpack firmness up to 2500 m due to sunshine, timing and intensity depend on steepness, altitude and aspect



few spots, relatively close to ridgelines and in shady zones above 2400 m

## Daytime loss of firmness up to 2500 m

Avalanche danger in the morning is **LOW**, then rises to **MODERATE** below 2500 m at midday. In high alpine regions avalanche danger remains **LOW** all day long, with only isolated avalanche prone locations.

Wet-snow problem: the main problem persists. A few small-to-medium naturally triggered avalanches in very-steep to extremely-steep terrain, limited to W-S-E aspects up to 1800m. An isolated large-sized avalanche cannot be ruled out, but will be rare.

Dry-snow avalanches: slightly raised risk in extremely-steep and ridgeline terrain, particularly where the snow is shallow in northern and eastern aspects above 2400 m.

## Snowpack structure

On south-facing and north-facing slopes below 2000 m the snow is hard in early morning. A few hundred metres higher up there is breakable crust, on north-facing slopes and in high-alpine regions also dry powder. As a result of solar radiation, the uppermost layers then soften up on sunny slopes and at lower altitudes with varying speed and varying depth.

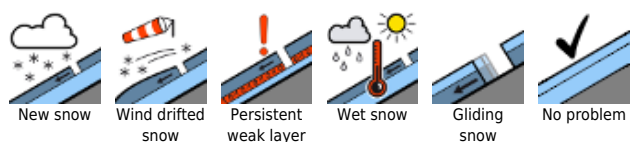
Very slight weak layers for potential fractures of slab avalanches in high alpine regions in the uppermost 20-30 cm of the snowpack near the melt-freeze crusts between the latest rounds of snowfall.

## Weather

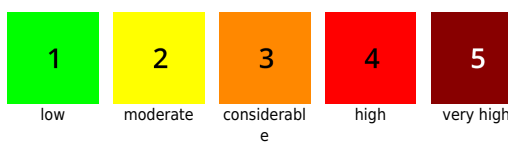
Following a night with only scattered clouds and adequate outgoing longwave radiation, on **Wednesday** sunshine and convective clouds will alternate. It is expected to remain dry. Mostly light winds, in the Niedere Tauern southerly foehn wind will blow at 30-40 km/hr. At 2000 m 2-6 degrees; at 3000 m, -3 degrees.

On **Thursday**, following a night of clear skies, initially good visibility and intermittent sunshine, but phases of dense high-altitude cloudbanks. Southerly foehn winds will continue in the Tauern. Temperatures will remain mild. On **Thursday night** a weak cold front with rain showers will pass through the high altitude regions. During the daytime, initially lots of clouds and light showers (snowfall level above 1600-2000 m), more pleasant conditions are expected in the afternoon.

### Avalanche problems



### Danger ratings



### Expositions



## 28.04.2021 through 29.04.2021, morning

### Outlook

On Thursday, no significant change is anticipated. Amid dense high-altitude cloudbanks, the snow will transform to firn somewhat later.

---

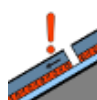
#### Avalanche problems



New snow



Wind drifted  
snow



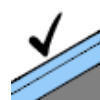
Persistent  
weak layer



Wet snow



Gliding  
snow



No problem

#### Danger ratings



1

low



2

moderate



3

considerabl  
e



4

high



5

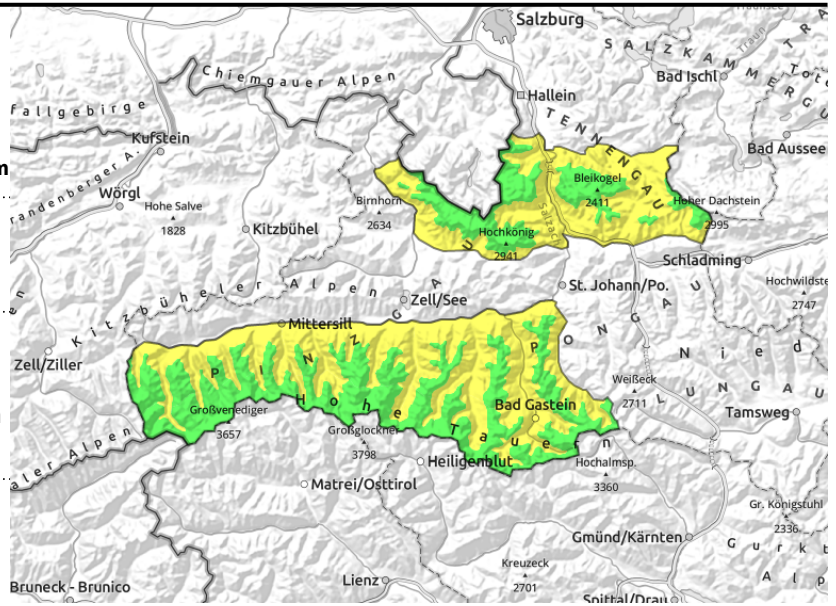
very high

#### Expositions



# 28.04.2021 through 29.04.2021, afternoon

**Steinernes Meer, Hochkönig, Hagengebirge, Göllstock, Tennengebirge, Gosaukamm, Großvenedigergruppe Nord, Glocknergruppe Nord, Goldberggruppe Nord, Großvenedigergruppe Alpenhauptkamm, Glocknergruppe Alpenhauptkamm, Goldberggruppe Alpenhauptkamm**



Loss of snowpack firmness up to 2500 m due to sunshine, timing and intensity depend on steepness, altitude and aspect



few spots, relatively close to ridgelines and in shady zones above 2400 m

## Daytime loss of firmness up to 2500 m

Avalanche danger in the morning is **LOW**, then rises to **MODERATE** below 2500 m at midday. In high alpine regions avalanche danger remains **LOW** all day long, with only isolated avalanche prone locations.

Wet-snow problem: the main problem persists. A few small-to-medium naturally triggered avalanches in very-steep to extremely-steep terrain, limited to W-S-E aspects up to 1800m. An isolated large-sized avalanche cannot be ruled out, but will be rare.

Dry-snow avalanches: slightly raised risk in extremely-steep and ridgeline terrain, particularly where the snow is shallow in northern and eastern aspects above 2400 m.

## Snowpack structure

On south-facing and north-facing slopes below 2000 m the snow is hard in early morning. A few hundred metres higher up there is breakable crust, on north-facing slopes and in high-alpine regions also dry powder. As a result of solar radiation, the uppermost layers then soften up on sunny slopes and at lower altitudes with varying speed and varying depth.

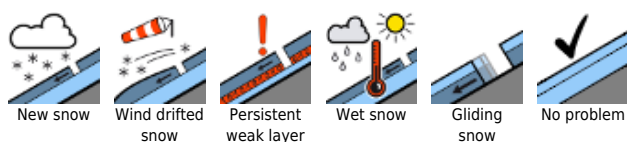
Very slight weak layers for potential fractures of slab avalanches in high alpine regions in the uppermost 20-30 cm of the snowpack near the melt-freeze crusts between the latest rounds of snowfall.

## Weather

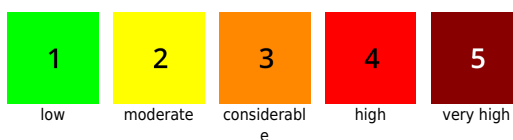
Following a night with only scattered clouds and adequate outgoing longwave radiation, on **Wednesday** sunshine and convective clouds will alternate. It is expected to remain dry. Mostly light winds, in the Niedere Tauern southerly foehn wind will blow at 30-40 km/hr. At 2000 m 2-6 degrees; at 3000 m, -3 degrees.

On **Thursday**, following a night of clear skies, initially good visibility and intermittent sunshine, but phases of dense high-altitude cloudbanks. Southerly foehn winds will continue in the Tauern. Temperatures will remain mild. On **Thursday night** a weak cold front with rain showers will pass through the high altitude regions. During the daytime, initially lots of clouds and light showers (snowfall level above 1600-2000 m), more pleasant conditions are expected in the afternoon.

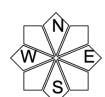
### Avalanche problems



### Danger ratings



### Expositions



## 28.04.2021 through 29.04.2021, afternoon

### Outlook

On Thursday, no significant change is anticipated. Amid dense high-altitude cloudbanks, the snow will transform to firn somewhat later.

---

#### Avalanche problems



New snow



Wind drifted  
snow



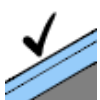
Persistent  
weak layer



Wet snow

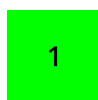


Gliding  
snow



No problem

#### Danger ratings



1

low



2

moderate



3

considerabl  
e



4

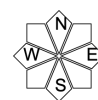
high



5

very high

#### Expositions



# 28.04.2021 through 29.04.2021, morning

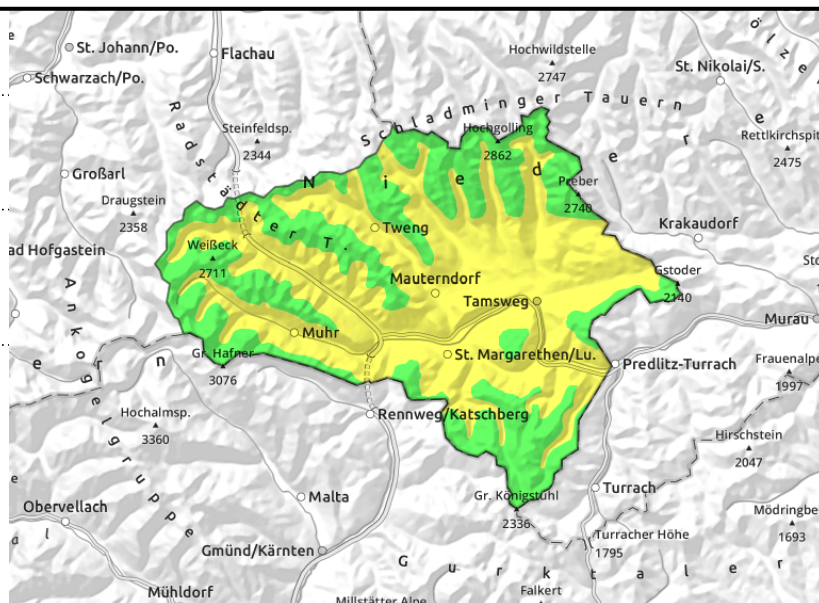
## Ankogelgruppe, Muhr, Niedere Tauern Süd, Nockberge



Only slight cooling at night. Loss of firmness up to 2500 m during the day.



few spots, above 2400 m



## Moderate wet-snow problem already during the morning.

Avalanche danger in the morning is LOW below 2000 m, then rises to MODERATE at midday, and the area of moderate danger expands.

Wet-snow problem: the main problem persists. A few small-to-medium naturally triggered avalanches in very-steep to extremely-see terrain, limited to W-S-E aspects up to 1800m. An isolated large-sized avalanche cannot be ruled out, but will be rare.

Dry-snow avalanches: slightly raised risk in extremely-steep and ridgeline terrain, particularly where the snow is shallow in northern and eastern aspects above 2400 m.

### Snowpack structure

Below 2000 m the snow in early morning is often breakable, the reserves of cold are minimal. At high altitudes there is still dry powder. In accordance with the arc of the sun, the snow softens at varying speeds and varyingly deep.

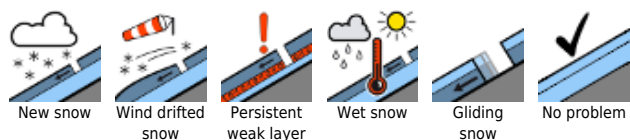
Minor weak layers for potential fractures of slab avalanches in high alpine regions in the uppermost 20-30 cm of the snowpack near the melt-freeze crusts between the latest rounds of snowfall. Very isolated danger indicators (stability tests and released slab avalanches) were last observed on south-facing and east-facing slopes above 2400 m.

### Weather

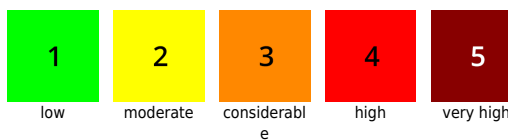
Following a night with only scattered clouds and adequate outgoing longwave radiation, on **Wednesday** sunshine and convective clouds will alternate. It is expected to remain dry. Mostly light winds, in the Niedere Tauern southerly foehn wind will blow at 30-40 km/hr. At 2000 m 2-6 degrees; at 3000 m, -3 degrees.

On **Thursday**, following a night of clear skies, initially good visibility and intermittent sunshine, but phases of dense high-altitude cloudbanks. Southerly foehn winds will continue in the Tauern. Temperatures will remain mild. On **Thursday night** a weak cold front with rain showers will pass through the high altitude regions. During the daytime, initially lots of clouds and light showers (snowfall level above 1600-2000 m), more pleasant conditions are expected in the afternoon.

### Avalanche problems



### Danger ratings



### Expositions



## 28.04.2021 through 29.04.2021, morning

### Outlook

On Thursday, no significant change is anticipated. Amid dense high-altitude cloudbanks, the snow will transform to firn somewhat later.

---

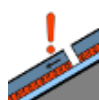
#### Avalanche problems



New snow



Wind drifted  
snow



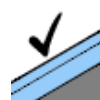
Persistent  
weak layer



Wet snow

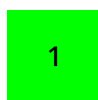


Gliding  
snow



No problem

#### Danger ratings



1

low



2

moderate



3

considerabl  
e



4

high



5

very high

#### Expositions



# 28.04.2021 through 29.04.2021, afternoon

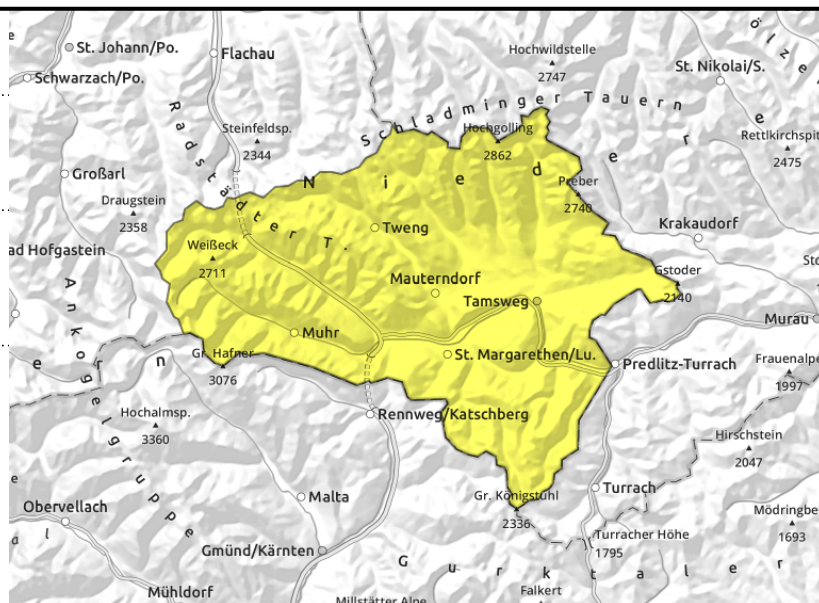
## Ankogelgruppe, Muhr, Niedere Tauern Süd, Nockberge



Only slight cooling at night.  
Loss of firmness up to 2500 m during the day.



few spots, above 2400 m



## Moderate wet-snow problem already during the morning.

Avalanche danger in the morning is LOW below 2000 m, then rises to MODERATE at midday, and the area of moderate danger expands.

Wet-snow problem: the main problem persists. A few small-to-medium naturally triggered avalanches in very-steep to extremely-see terrain, limited to W-S-E aspects up to 1800m. An isolated large-sized avalanche cannot be ruled out, but will be rare.

Dry-snow avalanches: slightly raised risk in extremely-steep and ridgeline terrain, particularly where the snow is shallow in northern and eastern aspects above 2400 m.

### Snowpack structure

Below 2000 m the snow in early morning is often breakable, the reserves of cold are minimal. At high altitudes there is still dry powder. In accordance with the arc of the sun, the snow softens at varying speeds and varyingly deep.

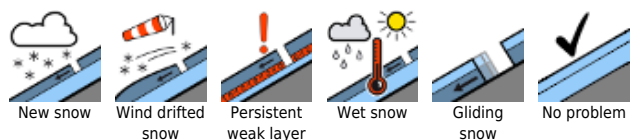
Minor weak layers for potential fractures of slab avalanches in high alpine regions in the uppermost 20-30 cm of the snowpack near the melt-freeze crusts between the latest rounds of snowfall. Very isolated danger indicators (stability tests and released slab avalanches) were last observed on south-facing and east-facing slopes above 2400 m.

### Weather

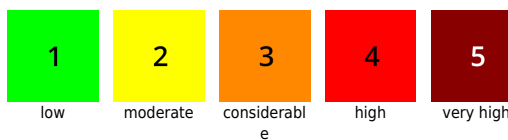
Following a night with only scattered clouds and adequate outgoing longwave radiation, on **Wednesday** sunshine and convective clouds will alternate. It is expected to remain dry. Mostly light winds, in the Niedere Tauern southerly foehn wind will blow at 30-40 km/hr. At 2000 m 2-6 degrees; at 3000 m, -3 degrees.

On **Thursday**, following a night of clear skies, initially good visibility and intermittent sunshine, but phases of dense high-altitude cloudbanks. Southerly foehn winds will continue in the Tauern. Temperatures will remain mild. On **Thursday night** a weak cold front with rain showers will pass through the high altitude regions. During the daytime, initially lots of clouds and light showers (snowfall level above 1600-2000 m), more pleasant conditions are expected in the afternoon.

### Avalanche problems



### Danger ratings



### Expositions



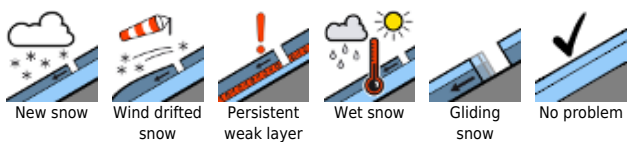
## 28.04.2021 through 29.04.2021, afternoon

### Outlook

On Thursday, no significant change is anticipated. Amid dense high-altitude cloudbanks, the snow will transform to firn somewhat later.

Translated by Jeffrey McCabe, [www.creativtrans.com](http://www.creativtrans.com)

#### Avalanche problems



#### Danger ratings



#### Expositions

