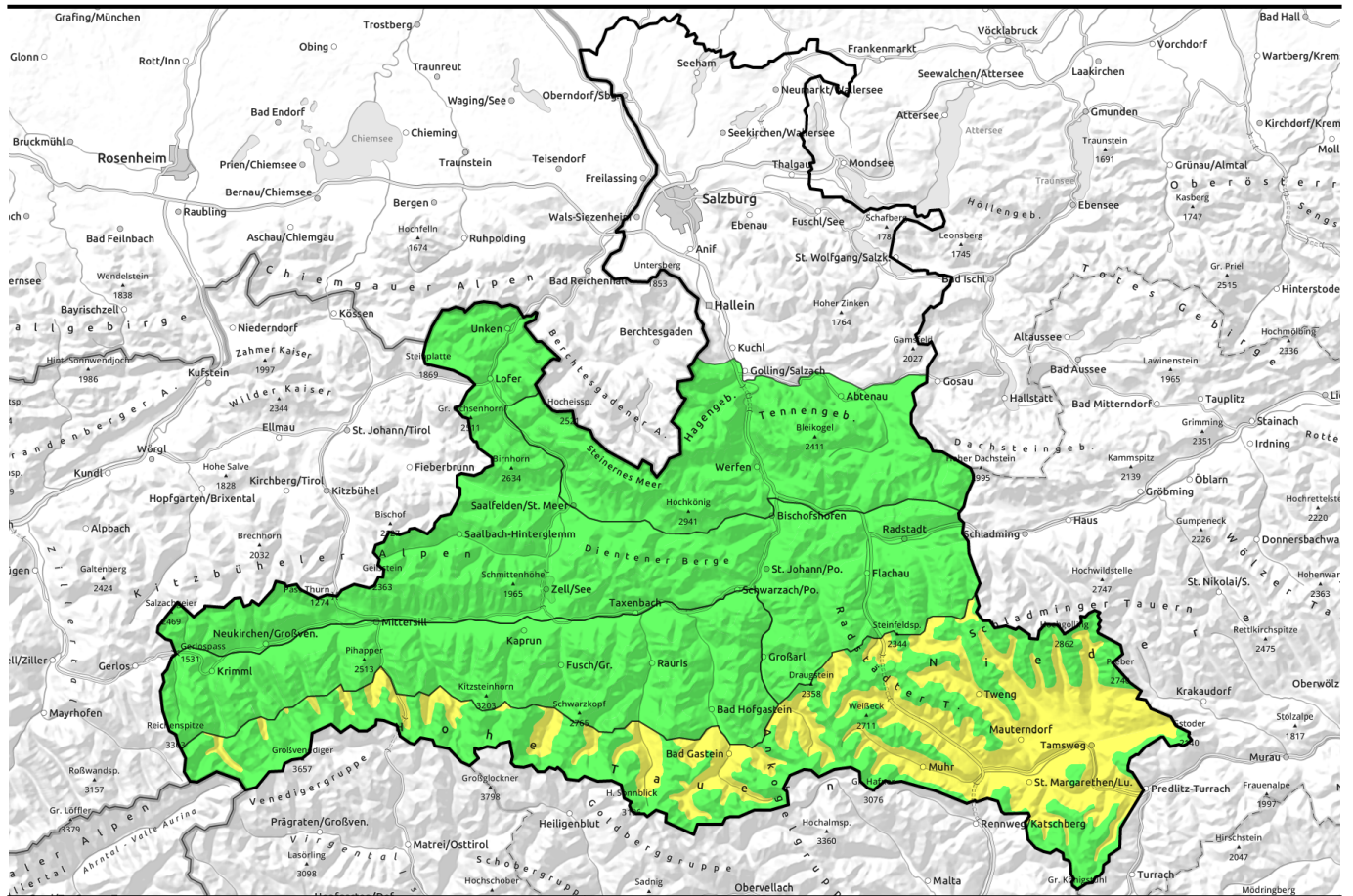



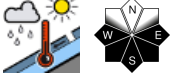

# 27.04.2021, morning





## In southern regions few possibilities due to foehn and cloud, better in northern regions

- 


Loferer und Leoganger Steinberge, Kitzbüheler Alpen, Glemmtal, Oberpinzgauer Grasberge, Dientner Grasberge, Pongauer Grasberge, Niedere Tauern Nord, Chiemgauer Alpen, Heutal, Reiteralpe


- 

Steinernes Meer, Hochkönig, Hagengebirge, Göllstock, Tennengebirge, Gosaukamm, Großvenedigergruppe Nord, Glocknergruppe Nord, Goldberggruppe Nord


-  2200 m
 

Großvenedigergruppe Alpenhauptkamm, Glocknergruppe Alpenhauptkamm, Goldberggruppe Alpenhauptkamm, Niedere Tauern Alpenhauptkamm, Ankogelgruppe, Muhr, Niedere Tauern Süd, Nockberge



### Avalanche problems



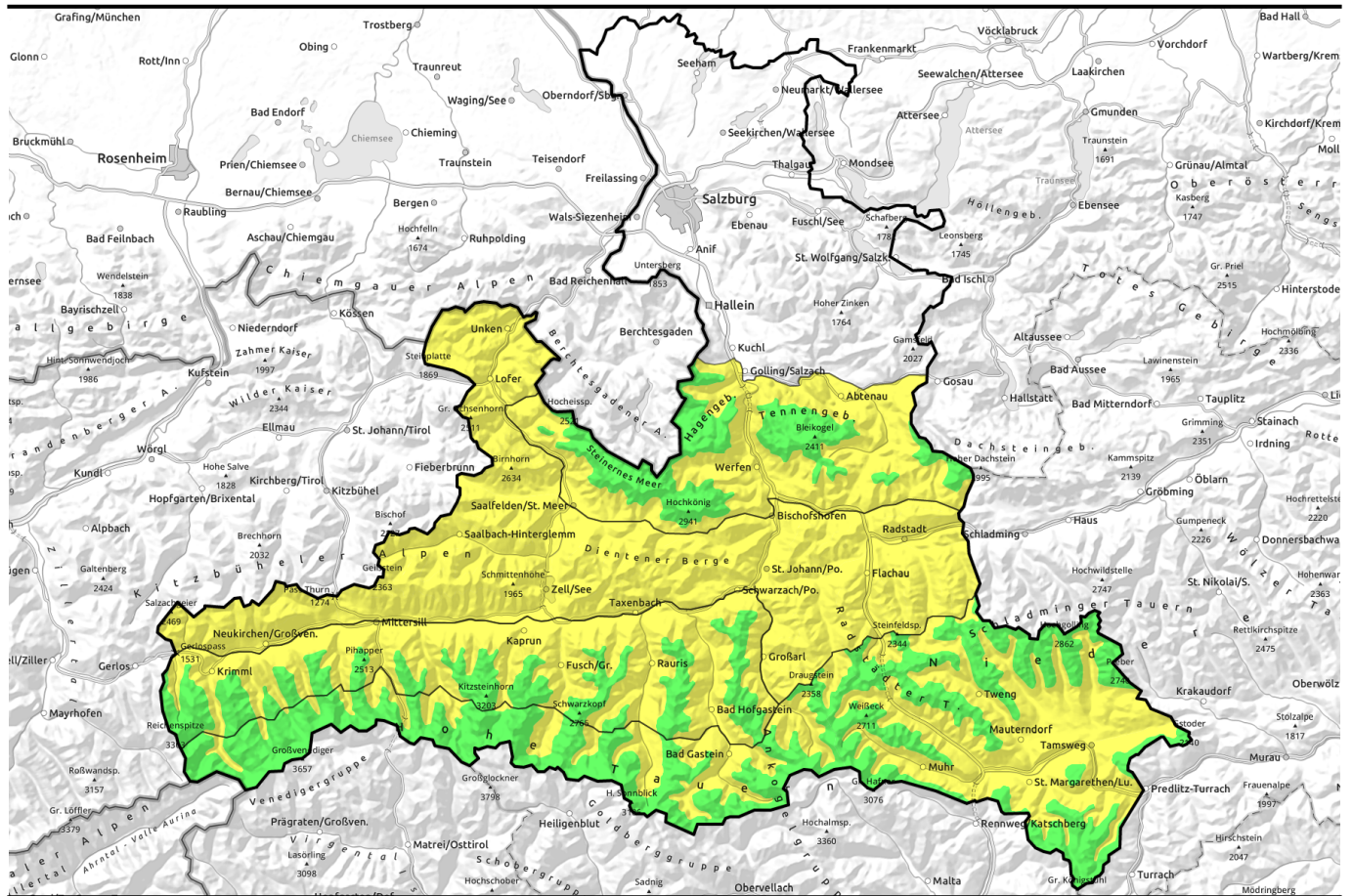
### Danger ratings



### Expositions



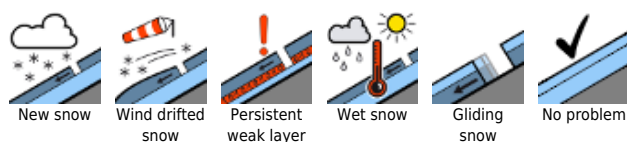
# 27.04.2021, afternoon



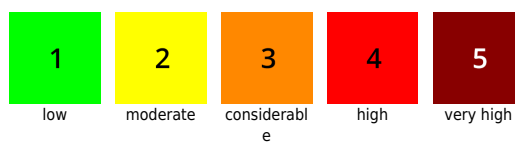
## Im Süden weniger Möglichkeiten wegen Föhn und Wolken, im Norden besser

	<p>Loferer und Leoganger Steinberge, Kitzbüheler Alpen, Glemmtal, Oberpinzgauer Grasberge, Dientner Grasberge, Pongauer Grasberge, Niedere Tauern Nord, Chiemgauer Alpen, Heutal, Reiteralpe</p>	
	<p>Steinernes Meer, Hochkönig, Hagengebirge, Göllstock, Tennengebirge, Gosaukamm, Großvenedigergruppe Nord, Glocknergruppe Nord, Goldberggruppe Nord</p>	
<p>2200 m</p>		
	<p>Großvenedigergruppe Alpenhauptkamm, Glocknergruppe Alpenhauptkamm, Goldberggruppe Alpenhauptkamm, Niedere Tauern Alpenhauptkamm, Ankogelgruppe, Muhr, Niedere Tauern Süd, Nockberge</p>	
<p>2200 m</p>		

### Avalanche problems



### Danger ratings



### Expositions

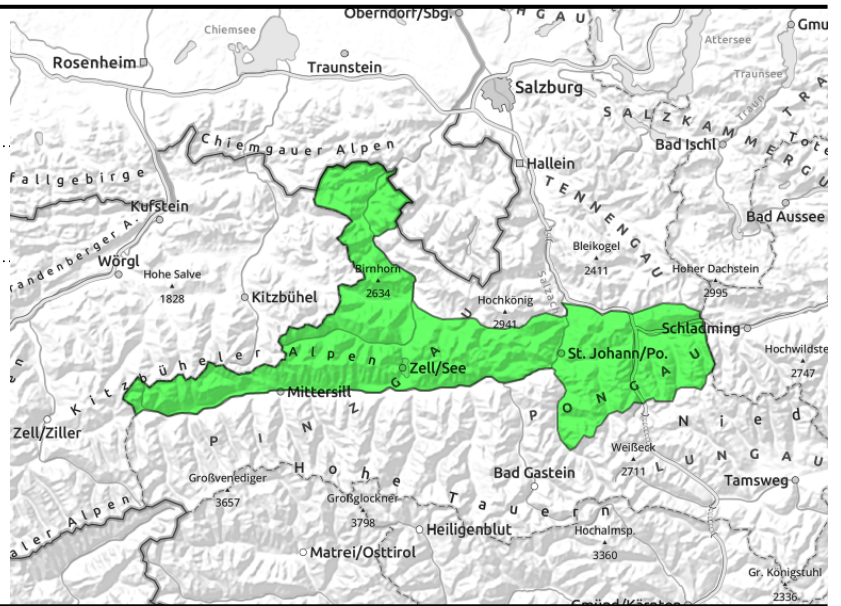


# 27.04.2021, morning

**Loferer und Leoganger Steinberge, Kitzbüheler Alpen, Glemmtal, Oberpinzgauer Grasberge, Dientner Grasberge, Pongauer Grasberge, Niedere Tauern Nord, Chiemgauer Alpen, Heutal, Reiteralpe**



Sunshine causing loss of firmness, timing and intensity depend on steepness, altitude and aspect



## Ongoing favourable conditions, but heed daytime cycle

Avalanche danger in the morning is LOW, then rises to MODERATE at midday.

Wet-snow problem: the main problem persists. Limited to W-S-W aspects up to 1800m. Further up it is still winter, the snow still dry. In the afternoon and evening, some small-to-medium naturally triggered releases are possible on very-steep to extremely-steep slopes. An isolated large avalanche cannot be ruled out, but will be rare.

Dry-snow avalanches: currently these are hardly to be triggered up to 2400 m. Slight risk on extremely steep and ridgeline slopes, particularly in N-E aspects where snow is shallow.

### Snowpack structure

In early morning the snow is hard, In ridgeline areas on north-facing slopes there is breakable crusts. With solar radiation the uppermost layers on sunny slopes and at lower altitudes soften at varyingly high speeds, and to varying depth.

Other potential fracture points near melt-freeze crusts between recent snowfall are hardly relevant at this altitude.

### Weather

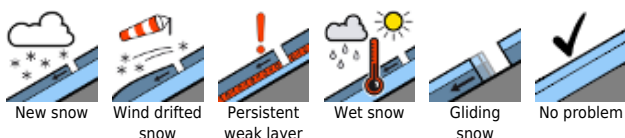
On **Tuesday**, following a night of clear skies, convective cloud build-up is anticipated in the course of the day. Moderat southerly winds, at 20-30 km/hr in exposed terrain. At 2000 m. 0 to 3 degrees, at 3000 m, -5 degrees.

On **Wednesday**, sunshine and convective cloud formations will alternate. It is expected to remain dry. Light winds. Warmer than recently: about 4 degrees at 2000 m; at 3000 m, -3 degrees.

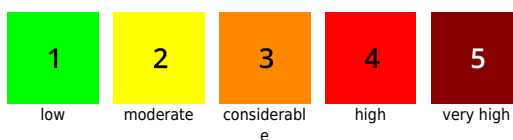
### Outlook

On Wednesday, somewhat more market daytime warming. Backcountry endeavors would be launches earlier than on previous days.

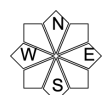
#### Avalanche problems



#### Danger ratings



#### Expositions

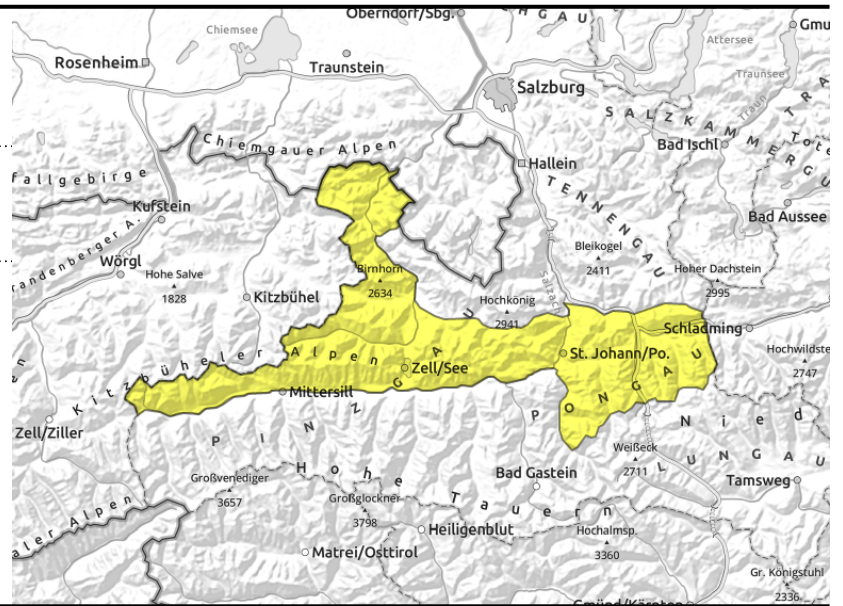


# 27.04.2021, afternoon

**Loferer und Leoganger Steinberge, Kitzbüheler Alpen, Glemmtal, Oberpinzgauer Grasberge, Dientner Grasberge, Pongauer Grasberge, Niedere Tauern Nord, Chiemgauer Alpen, Heutal, Reiteralpe**



Sunshine causing loss of firmness, timing and intensity depend on steepness, altitude and aspect



## Ongoing favourable conditions, but heed daytime cycle

Avalanche danger in the morning is LOW, then rises to MODERATE at midday.

Wet-snow problem: the main problem persists. Limited to W-S-W aspects up to 1800m. Further up it is still winter, the snow still dry. In the afternoon and evening, some small-to-medium naturally triggered releases are possible on very-steep to extremely-steep slopes. An isolated large avalanche cannot be ruled out, but will be rare.

Dry-snow avalanches: currently these are hardly to be triggered up to 2400 m. Slight risk on extremely steep and ridgeline slopes, particularly in N-E aspects where snow is shallow.

### Snowpack structure

In early morning the snow is hard, in ridgeline areas on north-facing slopes there is breakable crusts. With solar radiation the uppermost layers on sunny slopes and at lower altitudes soften at varying high speeds, and to varying depth.

Other potential fracture points near melt-freeze crusts between recent snowfall are hardly relevant at this altitude.

### Weather

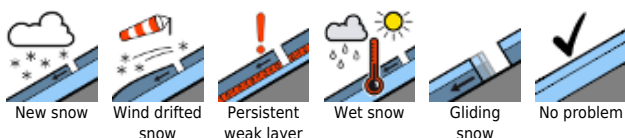
On **Tuesday**, following a night of clear skies, convective cloud build-up is anticipated in the course of the day. Moderat southerly winds, at 20-30 km/hr in exposed terrain. At 2000 m. 0 to 3 degrees, at 3000 m, -5 degrees.

On **Wednesday**, sunshine and convective cloud formations will alternate. It is expected to remain dry. Light winds. Warmer than recently: about 4 degrees at 2000 m; at 3000 m, -3 degrees.

### Outlook

On Wednesday, somewhat more market daytime warming. Backcountry endeavors would be launches earlier than on previous days.

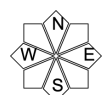
#### Avalanche problems



#### Danger ratings



#### Expositions



# 27.04.2021, morning

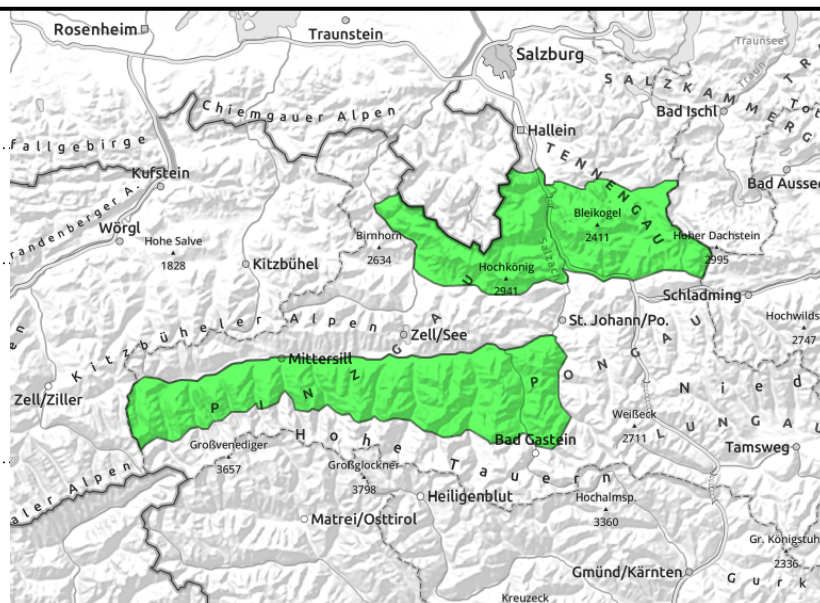
**Steinernes Meer, Hochkönig, Hagengebirge, Göllstock, Tennengebirge, Gosaukamm, Großvenedigergruppe Nord, Glocknergruppe Nord, Goldberggruppe Nord**



Loss of snowpack firmness through sunshine below 2200 m, timing and intensity depend on steepness, altitude and aspect



few spots, near ridgelines, above 2400 m



## Favourable conditions. Daytime warming up to 2200 m

Avalanche danger in the morning is LOW, then rises to MODERATE below 2200 m at midday. In high alpine regions, danger remains low all day long.

Wet-snow problem: the main problem persists. Limited to E-S-W aspects up to 1800m. Further up, the snow still dry. In the afternoon and evening, some small-to-medium naturally triggered releases are possible on very-steep to extremely-steep slopes. An isolated large avalanche cannot be ruled out, but will be rare.

Dry-snow avalanches: currently these are hardly to be triggered up to 2400 m. Slight risk on extremely steep and ridgeline slopes, particularly in N-E aspects where snow is shallow.

## Snowpack structure

In early morning the snow is hard below 2000 m on south-facing and north-facing slopes, a few hundred metres higher up there are breakable crusts on north-facing slopes and in high alpine regions dry powder. Due to solar radiation, the uppermost layers of the snowpack soften up to varying degrees, swiftly and deeply.

Very weak layers as potential fracture points for slab avalanches exist in high alpine regions in the uppermost 20-30 cm of the snowpack near melt-freeze crusts between the latest rounds of recent snowfall.

## Weather

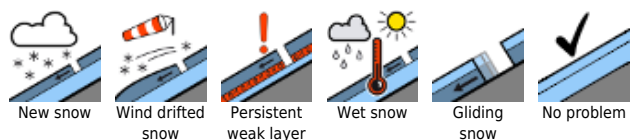
On **Tuesday**, following a night of clear skies, sunshine will reign, convective cloud build-up will occur in the course of the day. Moderate southerly winds, at 20-30 km/hr in exposed terrain. At 2000 m, 0 to 3 degrees; at 3000 m, -5 degrees.

On **Wednesday**, sunshine and convective cloud will alternate. It is expected to remain dry. Light winds. At 2000 m, +4 degrees; at 3000 m, -3 degrees

## Outlook

On Wednesday, daytime warming will be more intensive. Endeavors should be launched earlier in the day.

### Avalanche problems



### Danger ratings



### Expositions



# 27.04.2021, afternoon

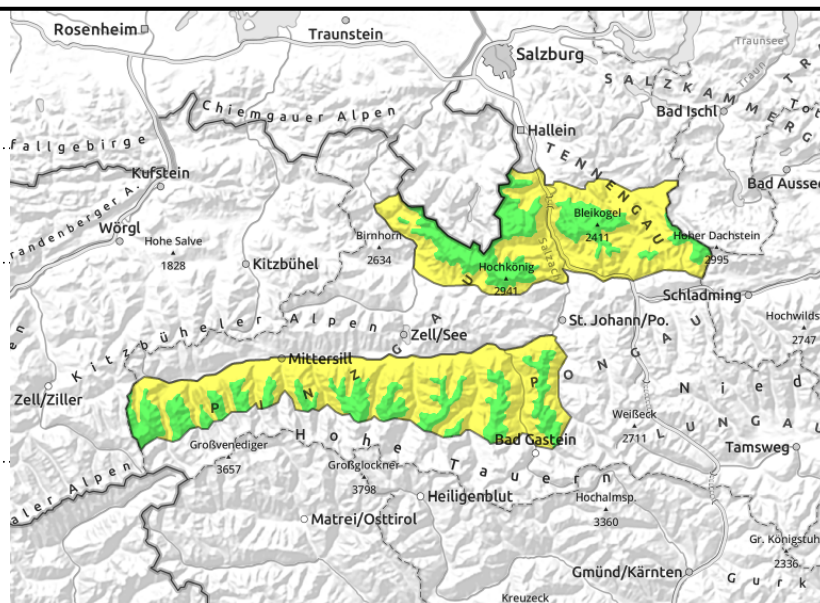
**Steinernes Meer, Hochkönig, Hagengebirge, Göllstock, Tennengebirge, Gosaukamm, Großvenedigergruppe Nord, Glocknergruppe Nord, Goldberggruppe Nord**



Loss of snowpack firmness through sunshine below 2200 m, timing and intensity depend on steepness, altitude and aspect



few spots, near ridgelines, above 2400 m



## Favourable conditions. Daytime warming up to 2200 m

Avalanche danger in the morning is LOW, then rises to MODERATE below 2200 m at midday. In high alpine regions, danger remains low all day long.

Wet-snow problem: the main problem persists. Limited to E-S-W aspects up to 1800m. Further up, the snow still dry. In the afternoon and evening, some small-to-medium naturally triggered releases are possible on very-steep to extremely-steep slopes. An isolated large avalanche cannot be ruled out, but will be rare.

Dry-snow avalanches: currently these are hardly to be triggered up to 2400 m. Slight risk on extremely steep and ridgeline slopes, particularly in N-E aspects where snow is shallow.

## Snowpack structure

In early morning the snow is hard below 2000 m on south-facing and north-facing slopes, a few hundred metres higher up there are breakable crusts on north-facing slopes and in high alpine regions dry powder. Due to solar radiation, the uppermost layers of the snowpack soften up to varying degrees, swiftly and deeply.

Very weak layers as potential fracture points for slab avalanches exist in high alpine regions in the uppermost 20-30 cm of the snowpack near melt-freeze crusts between the latest rounds of recent snowfall.

## Weather

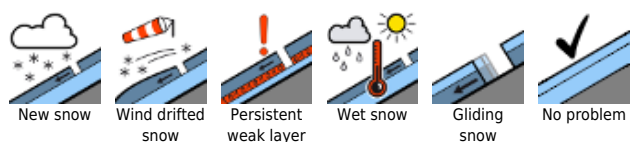
On **Tuesday**, following a night of clear skies, sunshine will reign, convective cloud build-up will occur in the course of the day. Moderate southerly winds, at 20-30 km/hr in exposed terrain. At 2000 m, 0 to 3 degrees; at 3000 m, -5 degrees.

On **Wednesday**, sunshine and convective cloud will alternate. It is expected to remain dry. Light winds. At 2000 m, +4 degrees; at 3000 m, -3 degrees

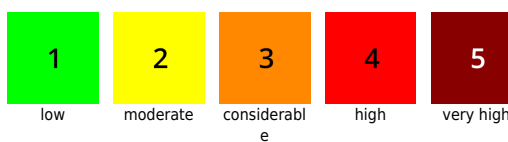
## Outlook

On Wednesday, daytime warming will be more intensive. Endeavors should be launched earlier in the day.

### Avalanche problems



### Danger ratings




### Expositions




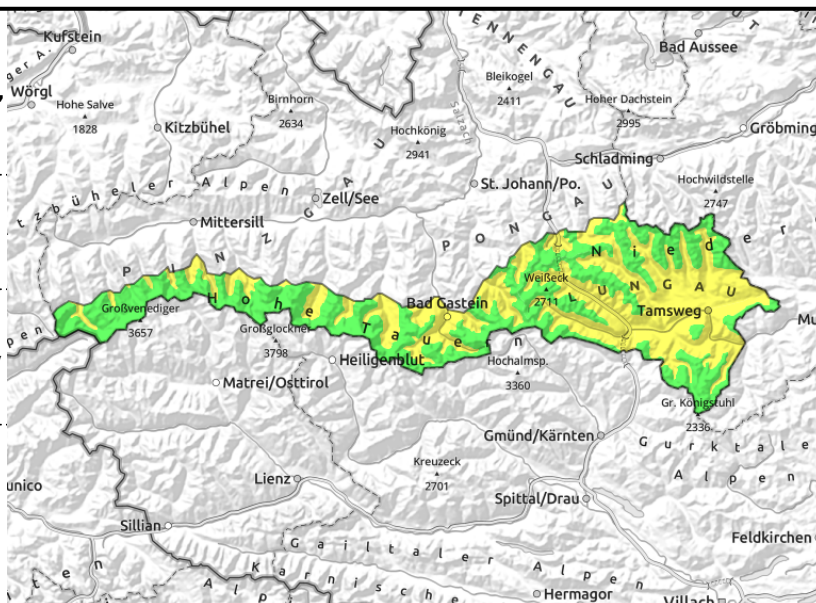
**27.04.2021**

**Großvenedigergruppe Alpenhauptkamm, Glocknergruppe Alpenhauptkamm, Goldberggruppe Alpenhauptkamm, Niedere Tauern Alpenhauptkamm, Ankogelgruppe, Muhr, Niedere Tauern Süd, Nockberge**



 Moist snow below 2200m, poor nocturnal radiation, snow is dry at high altitude

 few spots, above 2400 m



## Moderate wet-snow problem below 2200 m, minor old-snow problem in high alpine regions

Avalanche danger is MODERATE below 2200 m all day long. In high alpine regions avalanche danger is mostly LOW.

Wet-snow problem: Basically limited to the altitude level at about 2200 m. Further up, it is still winter. Some small to medium naturally triggered avalanches are possible in very steep terrain. A large-sized avalanche cannot be ruled out, but will be rare.

Dry-snow avalanches: currently these are hardly to be triggered up to 2400 m. Slight risk on extremely steep and ridgeline slopes, particularly in S-W-N aspects where snow is shallow.

### Snowpack structure

In early morning the snow is hard below 2000 m on south-facing and north-facing slopes, A few hundred metres higher up there are breakable crusts on north-facing slopes and in high alpine regions dry powder. Due to solar radiation, the uppermost layers of the snowpack soften up to varying degrees, swiftly and deeply.

Very weak layers as potential fracture points for slab avalanches exist in high alpine regions in the uppermost 20-30 cm of the snowpack near melt-freeze crusts between the latest rounds of recent snowfall. Isolated danger zones (acc. to stability tests and a slab avalanche triggering) exist in S-E aspects above 2400 m.

### Weather

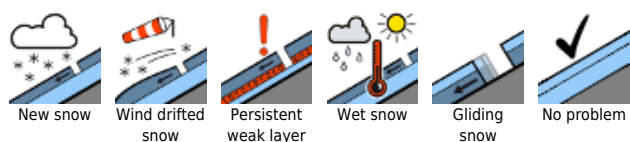
On **Tuesday**, following a night of clear skies, sunshine will reign, convective cloud build-up will occur in the course of the day. Moderate southerly winds, at 20-30 km/hr in exposed terrain. At 2000 m, 0 to 3 degrees; at 3000 m, -5 degrees.

On **Wednesday**, sunshine and convective cloud will alternate. It is expected to remain dry. Light winds. At 2000 m, +4 degrees; at 3000 m, -3 degrees

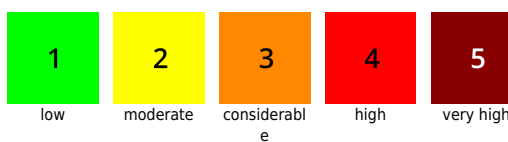
### Outlook

On Wednesday, daytime warming will be more intensive, includes the zone up to 2500 m. Nighttime skies on Tuesday night will be more heavily overcast, thus, not as optimal as in recent days.

#### Avalanche problems



#### Danger ratings



#### Expositions



**27.04.2021**

Translated by Jeffrey McCabe, [www.creativtrans.com](http://www.creativtrans.com)

---

**Avalanche problems**



New snow



Wind drifted  
snow



Persistent  
weak layer



Wet snow



Gliding  
snow



No problem

**Danger ratings**



1

low



2

moderate



3

considerabl  
e



4

high



5

very high

**Expositions**

