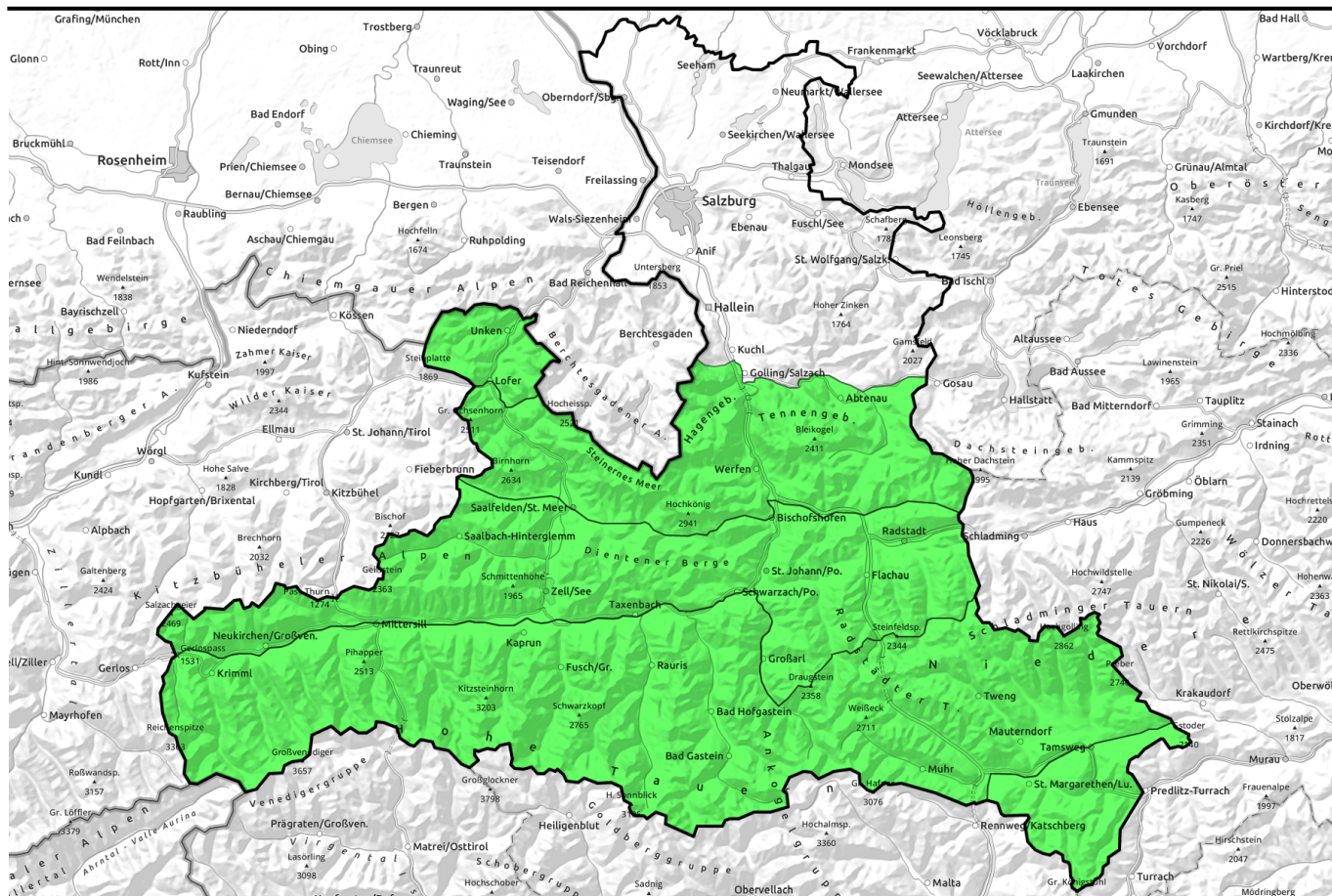


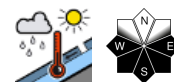
26.04.2021, morning



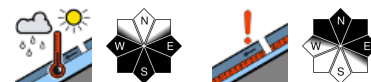
Slight daytime danger cycle below 2200 m, minor old-snow problem in high alpine regions



Chiemgauer Alpen, Heutal, Reiteralpe, Kitzbüheler Alpen, Glemmtal, Oberpinzgauer Grasberge, Dientner Grasberge, Pongauer Grasberge, Niedere Tauern Nord, Nockberge



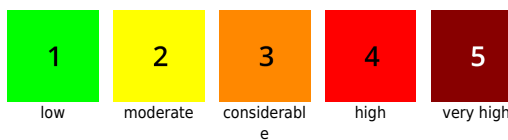
Steinernes Meer, Hochkönig, Hagengebirge, Göllstock, Loferer und Leoganger Steinberge, Tennengebirge, Gosaukamm, Niedere Tauern Alpenhauptkamm, Niedere Tauern Süd, Ankogelgruppe, Goldberggruppe Nord, Glocknergruppe Nord, Großvenedigergruppe Nord, Großvenedigergruppe Alpenhauptkamm, Glocknergruppe Alpenhauptkamm, Goldberggruppe Alpenhauptkamm



Avalanche problems



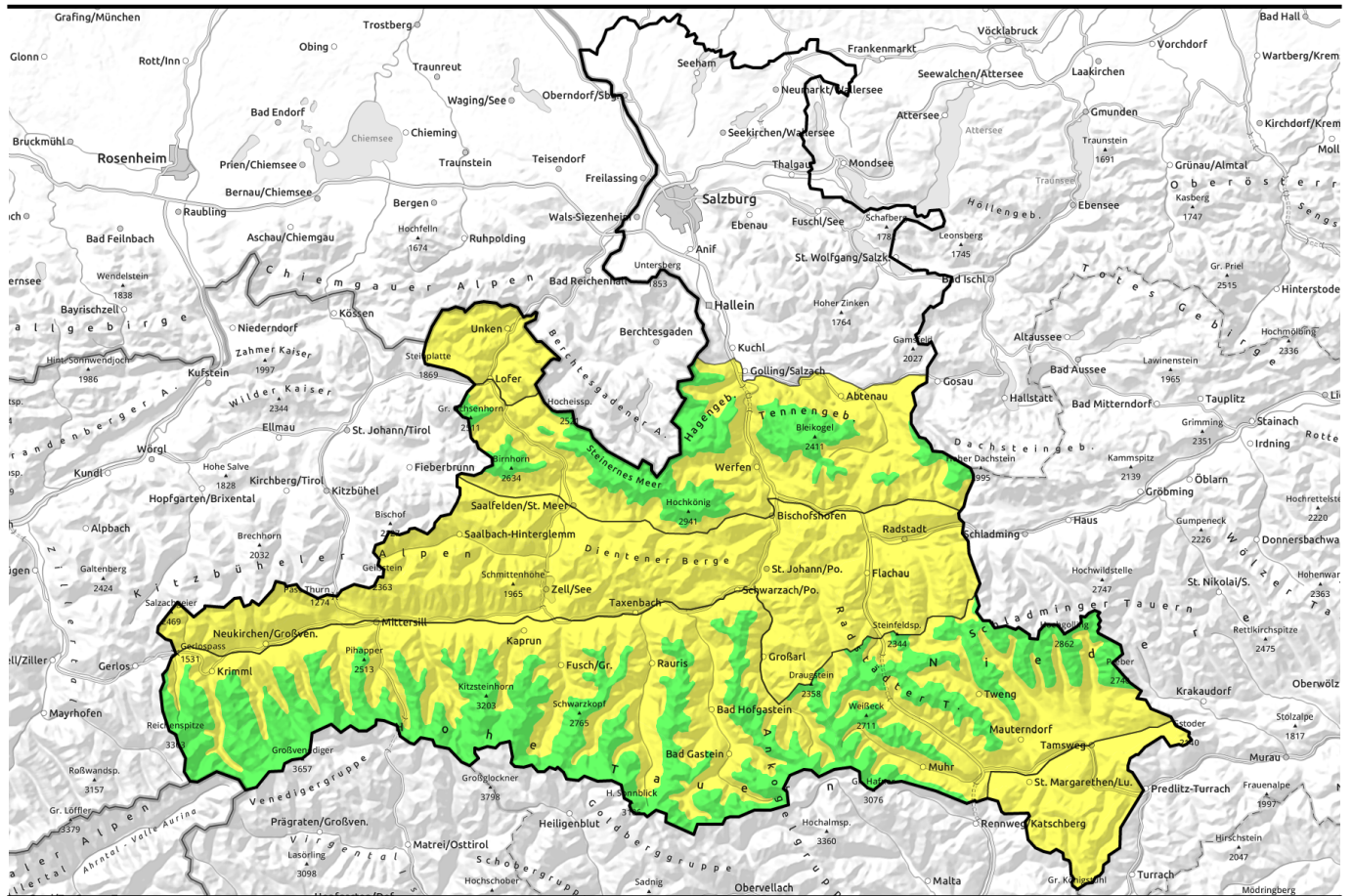
Danger ratings



Expositions



26.04.2021, afternoon



Leichter Tagesgang unter 2200 m, hochalpin kleines Altschneeproblem



Chiemgauer Alpen, Heutal, Reiteralpe, Kitzbüheler Alpen, Glemmtal, Oberpinzgauer Grasberge, Dientner Grasberge, Pongauer Grasberge, Niedere Tauern Nord, Nockberge

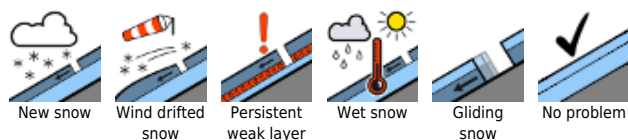


Steinernes Meer, Hochkönig, Hagengebirge, Göllstock, Loferer und Leoganger Steinberge, Tennengebirge, Gosaukamm, Niedere Tauern Alpenhauptkamm, Niedere Tauern Süd, Ankogelgruppe, Muhr, Goldberggruppe Nord, Glocknergruppe Nord, Großvenedigergruppe Nord, Großvenedigergruppe Alpenhauptkamm, Glocknergruppe Alpenhauptkamm, Goldberggruppe Alpenhauptkamm

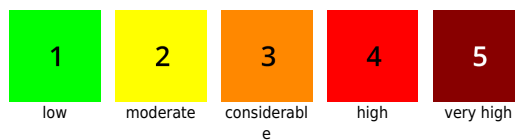


2200 m

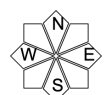
Avalanche problems



Danger ratings



Expositions

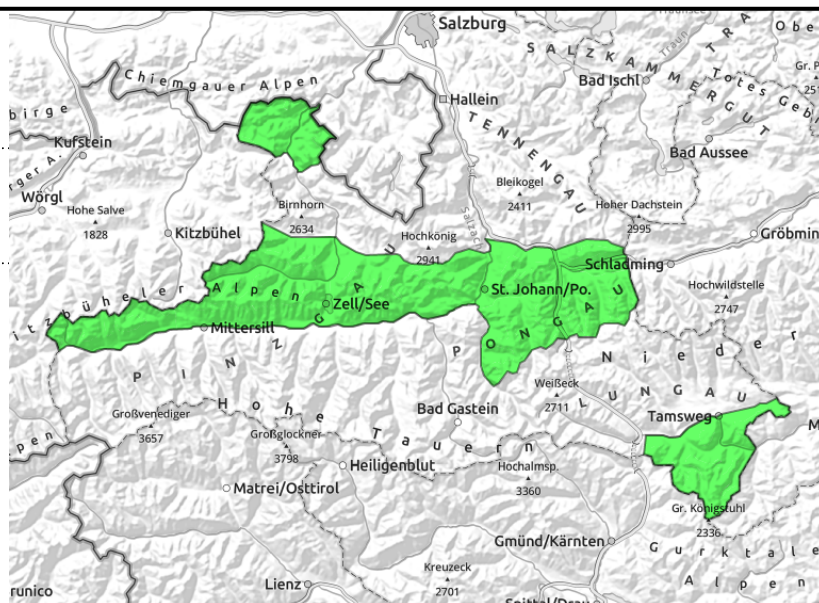


26.04.2021, morning

Chiemgauer Alpen, Heutal, Reiteralpe, Kitzbüheler Alpen, Glemmtal, Oberpinzgauer Grasberge, Dientner Grasberge, Pongauer Grasberge, Niedere Tauern Nord, Nockberge



Loss of snowpack firmness below 2200 m; timing depends on steepness, altitude, aspect



Favourable conditions continue. Mind daytime cycle.

Avalanche danger in the morning is LOW, rises to MODERATE at midday.

Wet-snow problem: the main problem currently. Limited to E-S-W aspects up to 2200m. Further up it is still winter, the snow still dry. In the afternoon and evening, some small-to-medium naturally triggered releases are possible on very-steep to extremely-steep slopes. An isolated large avalanche cannot be ruled out, but will be rare.

Dry-snow avalanches: currently these are hardly to be triggered up to 2400 m. Slight risk on extremely steep and ridgeline slopes, particularly in N-E aspects where snow is shallow.

Snowpack structure

Below 2500 m on south-facing slopes, below 1800 m on north-facing slopes the snow is hard in early morning. A few hundred metres further up, breakable crusts and (on north-facing slopes and in high alpine regions) dry powder. As a result of solar radiation, the uppermost layers soften up with differing quickness, on shady slopes the snow remains dry for longer. On very steep grassy slopes the snowpack is gliding over the ground.

Slightly weak layers, potential fracture points for slab avalanches exist between the most recently formed melt-freeze crusts between the last rounds of snowfall, are hardly relevant.

Weather

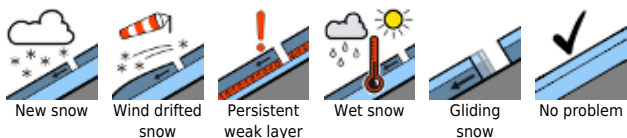
Monday: after a night of clear skies, initial sunshine, very little cloud. Starting at midday, more cloud will move in, most on the Main Alpine Ridge and Lungau. Minor rain showers are possible. Northerly winds at 30 km/hr. At 2000 m: 0 to 2 degrees.

Tuesday: a north-south gradient: in the Nockberge and on the southern flank of the Tauern, cloudy and foggy with some precipitation. North of the Tauern, sunshine and convective clouds in the afternoon. Strong southern winds in the Tauern; warmer

Outlook

On Tuesday, only a slightly changed situation. Daytime warming remains the main theme, and will be more marked than on previous days.

Avalanche problems



Danger ratings



Expositions

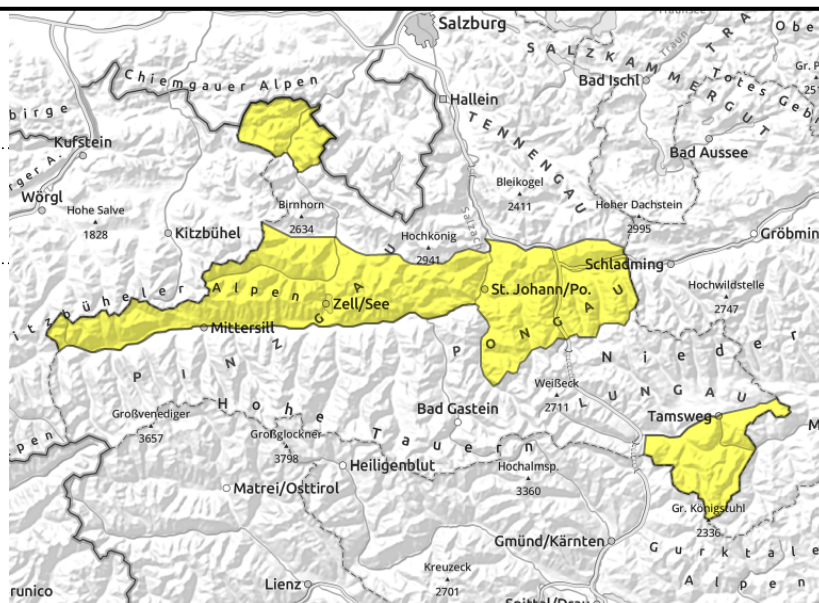


26.04.2021, afternoon

Chiemgauer Alpen, Heutal, Reiteralpe, Kitzbüheler Alpen, Glemmtal, Oberpinzgauer Grasberge, Dientner Grasberge, Pongauer Grasberge, Niedere Tauern Nord, Nockberge



Loss of snowpack firmness below 2200 m; timing depends on steepness, altitude, aspect



Favourable conditions continue. Mind daytime cycle.

Avalanche danger in the morning is LOW, rises to MODERATE at midday.

Wet-snow problem: the main problem currently. Limited to E-S-W aspects up to 2200m. Further up it is still winter, the snow still dry. In the afternoon and evening, some small-to-medium naturally triggered releases are possible on very-steep to extremely-steep slopes. An isolated large avalanche cannot be ruled out, but will be rare.

Dry-snow avalanches: currently these are hardly to be triggered up to 2400 m. Slight risk on extremely steep and ridgeline slopes, particularly in N-E aspects where snow is shallow.

Snowpack structure

Below 2500 m on south-facing slopes, below 1800 m on north-facing slopes the snow is hard in early morning. A few hundred metres further up, breakable crusts and (on north-facing slopes and in high alpine regions) dry powder. As a result of solar radiation, the uppermost layers soften up with differing quickness, on shady slopes the snow remains dry for longer. On very steep grassy slopes the snowpack is gliding over the ground.

Slightly weak layers, potential fracture points for slab avalanches exist between the most recently formed melt-freeze crusts between the last rounds of snowfall, are hardly relevant.

Weather

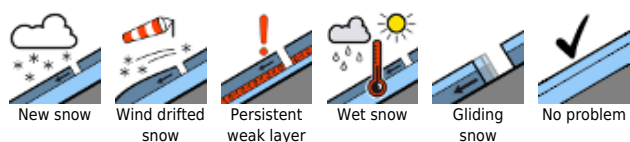
Monday: after a night of clear skies, initial sunshine, very little cloud. Starting at midday, more cloud will move in, most on the Main Alpine Ridge and Lungau. Minor rain showers are possible. Northerly winds at 30 km/hr. At 2000 m: 0 to 2 degrees.

Tuesday: a north-south gradient: in the Nockberge and on the southern flank of the Tauern, cloudy and foggy with some precipitation. North of the Tauern, sunshine and convective clouds in the afternoon. Strong southern winds in the Tauern; warmer

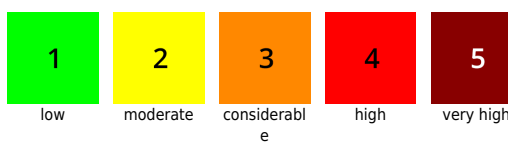
Outlook

On Tuesday, only a slightly changed situation. Daytime warming remains the main theme, and will be more marked than on previous days.

Avalanche problems



Danger ratings

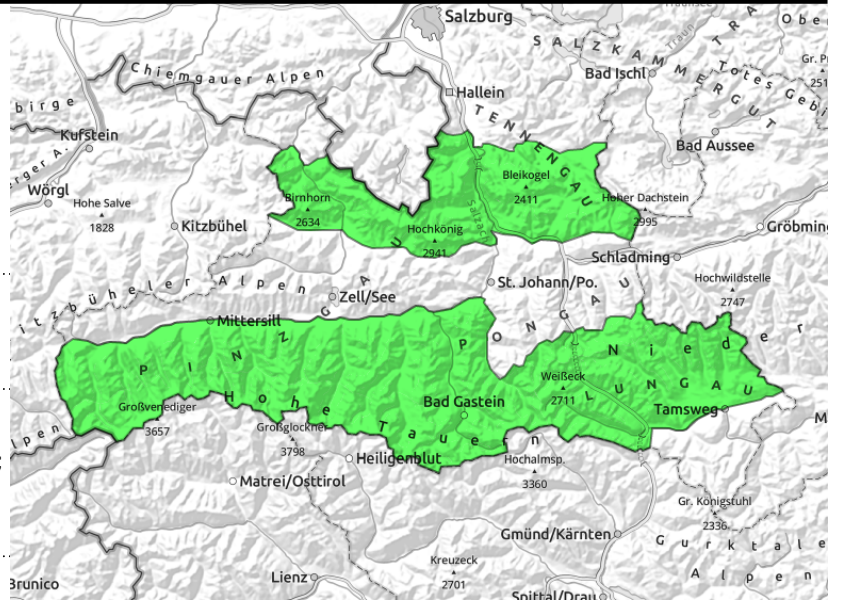


Expositions



26.04.2021, morning

Steinernes Meer, Hochkönig, Hagengebirge, Göllstock, Loferer und Leoganger Steinberge, Tennengebirge, Gosaukamm, Niedere Tauern Alpenhauptkamm, Niedere Tauern Süd, Ankongelgruppe, Muhr, Goldberggruppe Nord, Glocknergruppe Nord, Großvenedigergruppe Nord, Großvenedigergruppe Alpenhauptkamm, Glocknergruppe Alpenhauptkamm, Goldberggruppe Alpenhauptkamm



loss of snowpack firmness below 2200m, due to sunshine; timing depends on steepness, altitude, aspect



few spots, near ridgelines, above 2400 m

Favourable conditions. Main problem: daytime warming up to 2200m.

Avalanche danger in the morning is LOW, rises to MODERATE at midday.

Wet-snow problem: the main problem currently. Limited to E-S-W aspects up to 2200m. Further up it is still winter, the snow still dry. In the afternoon and evening, some small-to-medium naturally triggered releases are possible on very-steep to extremely-steep slopes. An isolated large avalanche cannot be ruled out, but will be rare.

Dry-snow avalanches: currently these are hardly to be triggered up to 2400 m. Slight risk on extremely steep and ridgeline slopes, particularly in N-E aspects where snow is shallow.

Snowpack structure

Below 2500 m on south-facing slopes, below 1800 m on north-facing slopes the snow is hard in early morning. A few hundred metres further up, breakable crusts and (on north-facing slopes and in high alpine regions) dry powder. As a result of solar radiation, the uppermost layers soften up with differing quickness, on shady slopes the snow remains dry for longer. On very steep grassy slopes the snowpack is gliding over the ground.

Slightly weak layers, potential fracture points for slab avalanches exist in the upper 20-30 cm of the snowpack between the most recently formed melt-freeze crusts between the last rounds of snowfall.

Weather

Monday: after a night of clear skies, initial sunshine, very little cloud. Starting at midday, more cloud will move in, most on the Main Alpine Ridge and in Lungau. Minor rain showers are possible. Northerly winds at 30 km/hr. At 2000 m: 0 to 2 degrees.

Tuesday: a north-south gradient: in the Nockberge and on the southern flank of the Tauern, cloudy and foggy with some precipitation. North of the Tauern, sunshine and convective clouds in the afternoon. Strong southern winds in the Tauern; warmer.

Outlook

On Tuesday, only a slightly changed situation. Daytime warming remains the main theme, and will be

Avalanche problems



New snow



Wind drifted snow



Persistent weak layer



Wet snow



Gliding snow



No problem

Danger ratings



1

low



2

moderate



3

considerable



4

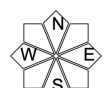
high



5

very high

Expositions



26.04.2021, morning

more marked than on previous days.

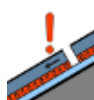
Avalanche problems



New snow



Wind drifted
snow



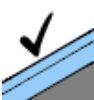
Persistent
weak layer



Wet snow

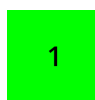


Gliding
snow



No problem

Danger ratings



1

low



2

moderate



3

considerabl
e



4

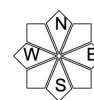
high



5

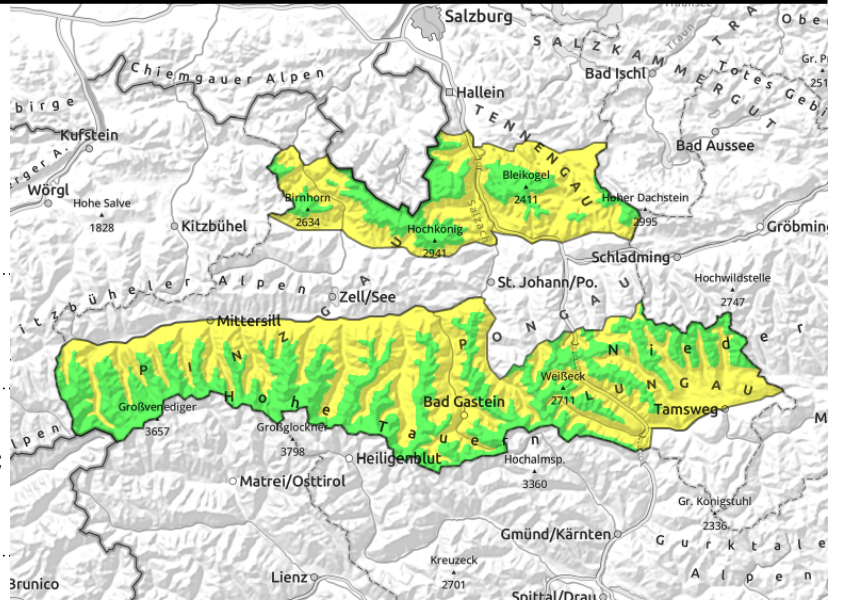
very high

Expositions



26.04.2021, afternoon

Steinernes Meer, Hochkönig, Hagengebirge, Göllstock, Loferer und Leoganger Steinberge, Tennengebirge, Gosaukamm, Niedere Tauern Alpenhauptkamm, Niedere Tauern Süd, Ankogelgruppe, Muhr, Goldberggruppe Nord, Glocknergruppe Nord, Großvenedigergruppe Nord, Großvenedigergruppe Alpenhauptkamm, Glocknergruppe Alpenhauptkamm, Goldberggruppe Alpenhauptkamm



2200 m



loss of snowpack firmness below 2200m, due to sunshine; timing depends on steepness, altitude, aspect



few spots, near ridgelines, above 2400 m

Favourable conditions. Main problem: daytime warming up to 2200m.

Avalanche danger in the morning is LOW, rises to MODERATE at midday.

Wet-snow problem: the main problem currently. Limited to E-S-W aspects up to 2200m. Further up it is still winter, the snow still dry. In the afternoon and evening, some small-to-medium naturally triggered releases are possible on very-steep to extremely-steep slopes. An isolated large avalanche cannot be ruled out, but will be rare.

Dry-snow avalanches: currently these are hardly to be triggered up to 2400 m. Slight risk on extremely steep and ridgeline slopes, particularly in N-E aspects where snow is shallow.

Snowpack structure

Below 2500 m on south-facing slopes, below 1800 m on north-facing slopes the snow is hard in early morning. A few hundred metres further up, breakable crusts and (on north-facing slopes and in high alpine regions) dry powder. As a result of solar radiation, the uppermost layers soften with differing quickness, on shady slopes the snow remains dry for longer. On very steep grassy slopes the snowpack is gliding over the ground.

Slightly weak layers, potential fracture points for slab avalanches exist in the upper 20-30 cm of the snowpack between the most recently formed melt-freeze crusts between the last rounds of snowfall.

Weather

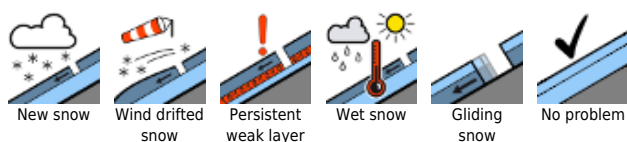
Monday: after a night of clear skies, initial sunshine, very little cloud. Starting at midday, more cloud will move in, most on the Main Alpine Ridge and in Lungau. Minor rain showers are possible. Northerly winds at 30 km/hr. At 2000 m: 0 to 2 degrees.

Tuesday: a north-south gradient: in the Nockberge and on the southern flank of the Tauern, cloudy and foggy with some precipitation. North of the Tauern, sunshine and convective clouds in the afternoon. Strong southern winds in the Tauern; warmer.

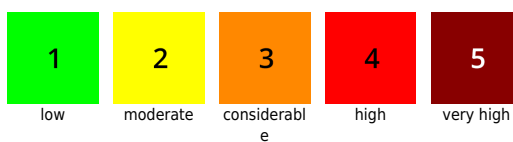
Outlook

On Tuesday, only a slightly changed situation. Daytime warming remains the main theme, and will be

Avalanche problems



Danger ratings



Expositions



26.04.2021, afternoon

more marked than on previous days.

Translated by Jeffrey McCabe, www.creativtrans.com

Avalanche problems



New snow



Wind drifted
snow



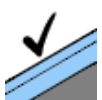
Persistent
weak layer



Wet snow

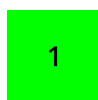


Gliding
snow



No problem

Danger ratings



1

low



2

moderate



3

considerabl
e



4

high



5

very high

Expositions

