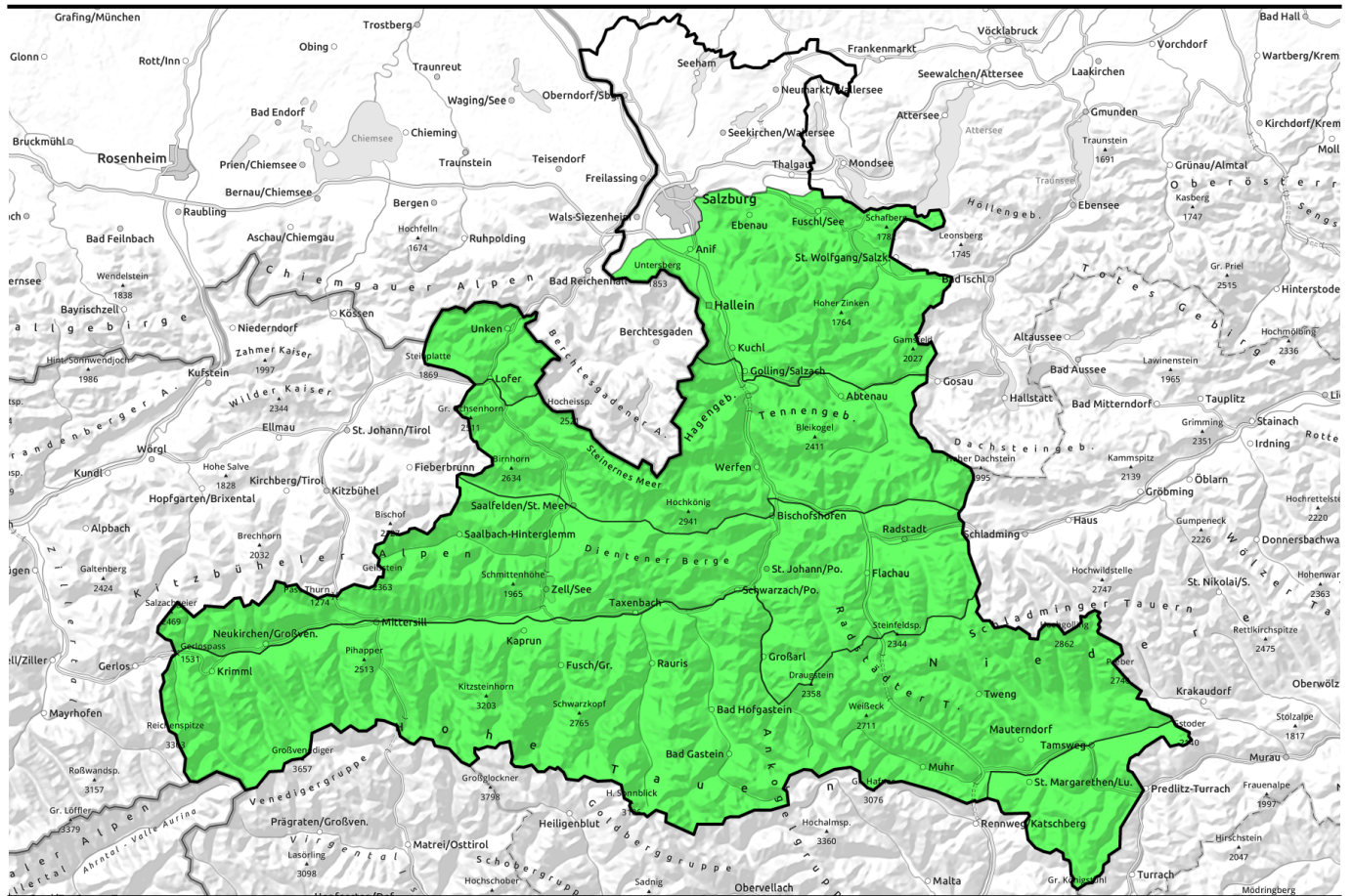


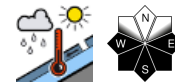
25.04.2021, morning



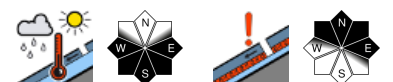
Minor daytime danger cycle on sunny slopes below 2200 m



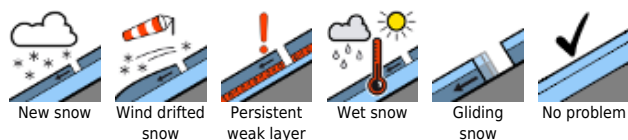
Untersbergstock, Osterhorngruppe, Gamsfeldgruppe, Chiemgauer Alpen, Heutal, Reiteralpe, Pongauer Grasberge, Niedere Tauern Nord, Dientner Grasberge, Kitzbüheler Alpen, Glemmtal, Oberpinzgauer Grasberge, Nockberge



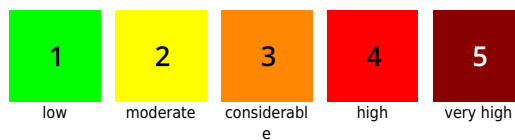
Tennengebirge, Gosaukamm, Steinernes Meer, Hochkönig, Hagengebirge, Göllstock, Loferer und Leoganger Steinberge, Großvenedigergruppe Nord, Großvenedigergruppe Alpenhauptkamm, Glocknergruppe Nord, Glocknergruppe Alpenhauptkamm, Goldberggruppe Nord, Goldberggruppe Alpenhauptkamm, Niedere Tauern Alpenhauptkamm, Ankogelgruppe, Muhr, Niedere Tauern Süd



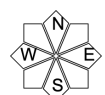
Avalanche problems



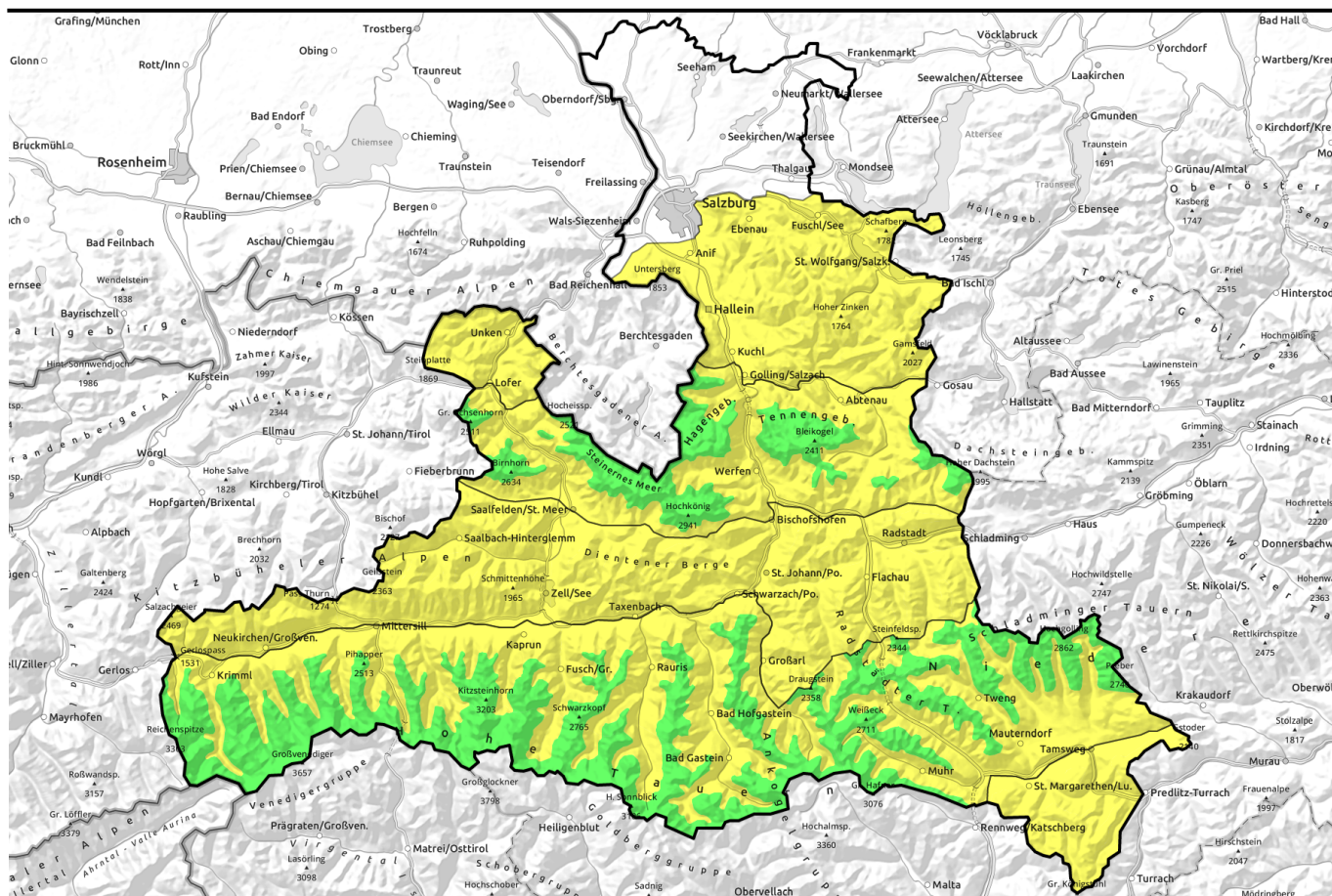
Danger ratings



Expositions



25.04.2021, afternoon



Kleiner Tagesgang an den Sonnenhängen unter 2200 m



Untersbergstock, Osterhorngruppe, Gamsfeldgruppe, Chiemgauer Alpen, Heutal, Reiteralpe, Pongauer Grasberge, Niedere Tauern Nord, Dientner Grasberge, Kitzbüheler Alpen, Glemmtal, Oberpinzgauer Grasberge, Nockberge

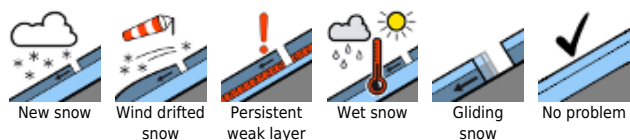


Tennengebirge, Gosaukamm, Steinernes Meer, Hochkönig, Hagengebirge, Göllstock, Loferer und Leoganger Steinberge, Großvenedigergruppe Nord, Großvenedigergruppe Alpenhauptkamm, Glocknergruppe Nord, Glocknergruppe Alpenhauptkamm, Goldberggruppe Nord, Goldberggruppe Alpenhauptkamm, Niedere Tauern Alpenhauptkamm, Ankogelgruppe, Muhr, Niedere Tauern Süd

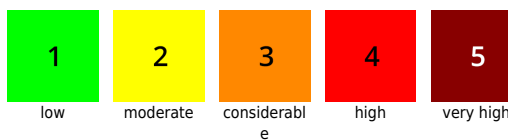


2200 m

Avalanche problems



Danger ratings



Expositions

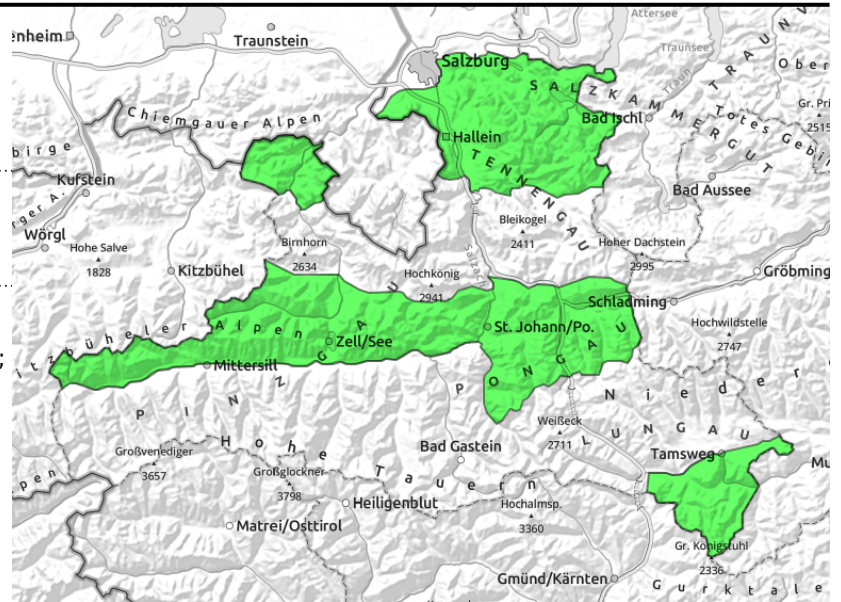


25.04.2021, morning

Untersbergstock, Osterhorngruppe, Gamsfeldgruppe, Chiemgauer Alpen, Heutal, Reiteralpe, Pongauer Grasberge, Niedere Tauern Nord, Dientner Grasberge, Kitzbüheler Alpen, Glemmtal, Oberpinzgauer Grasberge, Nockberge



loss of snowpack firmness below 2200m, due to sunshine; timing depends on steepness, altitude, aspect



Favourable conditions! Mind daytime cycle!

Avalanche danger in the morning is LOW, rises to MODERATE at midday.

Wet-snow problem: the main problem currently. Limited to E-S-W aspects up to 2200m. Further up it is still winter, the snow still dry. In the afternoon and evening, some small-to-medium naturally triggered releases are possible on very-steep to extremely-steep slopes. An isolated large avalanche cannot be ruled out, but will be rare.

Dry-snow avalanches: currently these are hardly to be triggered up to 2400 m. Slight risk on extremely steep and ridgeline slopes, particularly in N-E aspects where snow is shallow.

Snowpack structure

Below 2500 m on south-facing slopes, below 1800 m on north-facing slopes the snow is hard in early morning. A few hundred metres further up, breakable crusts and (on north-facing slopes and in high alpine regions) dry powder. As a result of solar radiation, the uppermost layers soften up with differing quickness, on shady slopes the snow remains dry for longer. On very steep grassy slopes the snowpack is gliding over the ground.

Slightly weak layers, potential fracture points for slab avalanches exist in the uppermost 20-30 cm of the snowpack near the melt-freeze crusts between the last rounds of snowfall and near the recently formed snowdrift accumulations near ridgelines.

Weather

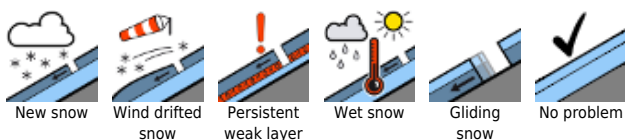
Sunday: initially sunshine over widespread areas, convective clouds will spread in late morning, veiling some of the peaks in early afternoon. The NW winds will be blowing at 30-40 km/hr in exposed terrain. Temperatures will be slightly lower: 0-2 degrees at 2000 m, -6 degrees at 3000 m.

Monday: some clouds from the south. Temperatures will recede slightly. At 2000 m: 0 degrees.

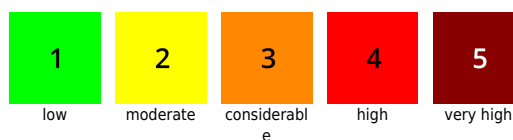
Outlook

On Monday and Tuesday, somewhat lower temperatures, but no significant change in the situation. Main concern: the minor daytime danger cycle.

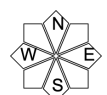
Avalanche problems



Danger ratings

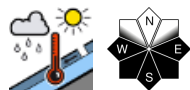


Expositions

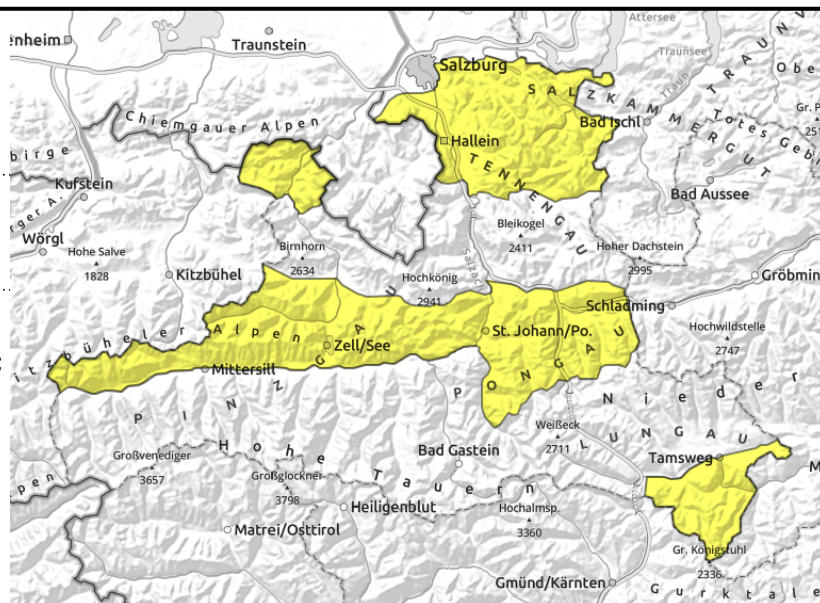


25.04.2021, afternoon

Untersbergstock, Osterhorngruppe, Gamsfeldgruppe, Chiemgauer Alpen, Heutal, Reiteralpe, Pongauer Grasberge, Niedere Tauern Nord, Dientner Grasberge, Kitzbüheler Alpen, Glemmtal, Oberpinzgauer Grasberge, Nockberge



loss of snowpack firmness below 2200m, due to sunshine; timing depends on steepness, altitude, aspect



Favourable conditions! Mind daytime cycle!

Avalanche danger in the morning is LOW, rises to MODERATE at midday.

Wet-snow problem: the main problem currently. Limited to E-S-W aspects up to 2200m. Further up it is still winter, the snow still dry. In the afternoon and evening, some small-to-medium naturally triggered releases are possible on very-steep to extremely-steep slopes. An isolated large avalanche cannot be ruled out, but will be rare.

Dry-snow avalanches: currently these are hardly to be triggered up to 2400 m. Slight risk on extremely steep and ridgeline slopes, particularly in N-E aspects where snow is shallow.

Snowpack structure

Below 2500 m on south-facing slopes, below 1800 m on north-facing slopes the snow is hard in early morning. A few hundred metres further up, breakable crusts and (on north-facing slopes and in high alpine regions) dry powder. As a result of solar radiation, the uppermost layers soften up with differing quickness, on shady slopes the snow remains dry for longer. On very steep grassy slopes the snowpack is gliding over the ground.

Slightly weak layers, potential fracture points for slab avalanches exist in the uppermost 20-30 cm of the snowpack near the melt-freeze crusts between the last rounds of snowfall and near the recently formed snowdrift accumulations near ridgelines.

Weather

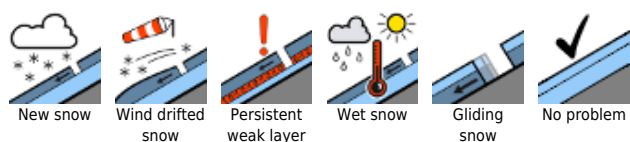
Sunday: initially sunshine over widespread areas, convective clouds will spread in late morning, veiling some of the peaks in early afternoon. The NW winds will be blowing at 30-40 km/hr in exposed terrain. Temperatures will be slightly lower: 0-2 degrees at 2000 m, -6 degrees at 3000 m.

Monday: some clouds from the south. Temperatures will recede slightly. At 2000 m: 0 degrees.

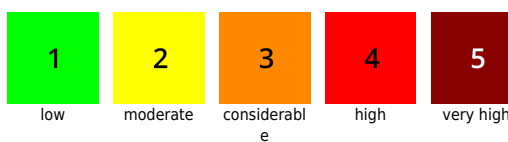
Outlook

On Monday and Tuesday, somewhat lower temperatures, but no significant change in the situation. Main concern: the minor daytime danger cycle.

Avalanche problems



Danger ratings

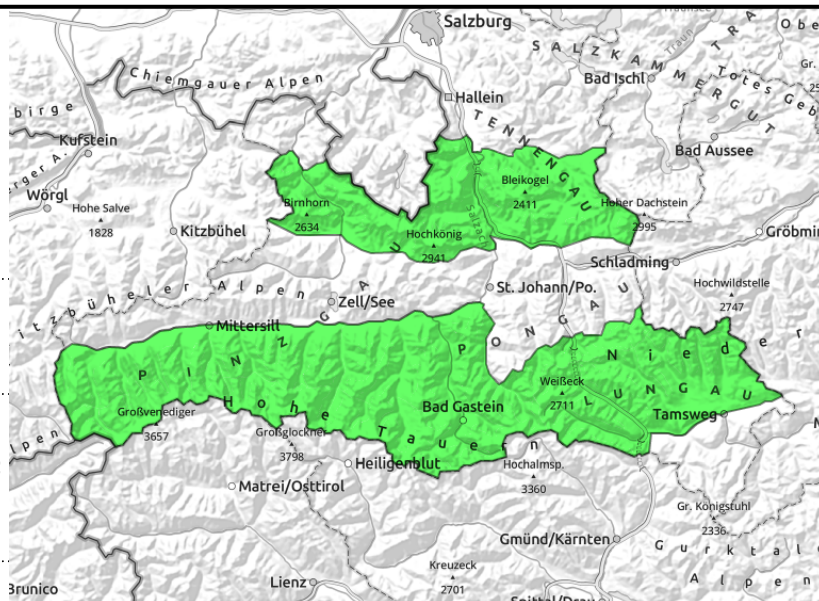


Expositions



25.04.2021, morning

Tennengebirge, Gosaukamm, Steinernes Meer, Hochkönig, Hagengebirge, Göllstock, Loferer und Leoganger Steinberge, Großvenedigergruppe Nord, Großvenedigergruppe Alpenhauptkamm, Glocknergruppe Nord, Glocknergruppe Alpenhauptkamm, Goldberggruppe Nord, Goldberggruppe Alpenhauptkamm, Niedere Tauern Alpenhauptkamm, Ankogelgruppe, Muhr, Niedere Tauern Süd



loss of snowpack firmness below 2200m, due to sunshine; timing depends on steepness, altitude, aspect



few spots, near ridgelines, above 2400 m

Favourable conditions. Main problem: daytime warming.

Avalanche danger in the morning is LOW, rises to MODERATE at midday.

Wet-snow problem: the main problem currently. Limited to E-S-W aspects up to 2200m. Further up it is still winter, the snow still dry. In the afternoon and evening, some small-to-medium naturally triggered releases are possible on very-steep to extremely-steep slopes. An isolated large avalanche cannot be ruled out, but will be rare.

Dry-snow avalanches: currently these are hardly to be triggered up to 2400 m. Slight risk on extremely steep and ridgeline slopes, particularly in N-E aspects where snow is shallow.

Snowpack structure

Below 2500 m on south-facing slopes, below 1800 m on north-facing slopes the snow is hard in early morning. A few hundred metres further up, breakable crusts and (on north-facing slopes and in high alpine regions) dry powder. As a result of solar radiation, the uppermost layers soften up with differing quickness, on shady slopes the snow remains dry for longer. On very steep grassy slopes the snowpack is gliding over the ground.

Slightly weak layers, potential fracture points for slab avalanches exist in the uppermost 20-30 cm of the snowpack near the melt-freeze crusts between the last rounds of snowfall and near the recently formed snowdrift accumulations near ridgelines.

Weather

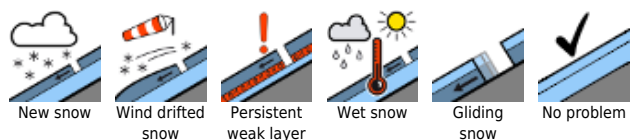
Sunday: initially sunshine over widespread areas, convective clouds will spread in late morning, veiling some of the peaks in early afternoon. The NW winds will be blowing at 30-40 km/hr in exposed terrain. Temperatures will be slightly lower: 0-2 degrees at 2000 m, -6 degrees at 3000 m.

Monday: some clouds from the south. Temperatures will recede slightly. At 2000 m: 0 degrees.

Outlook

On Monday and Tuesday, somewhat lower temperatures, but no significant change in the situation. Main concern: the minor daytime danger cycle below 2200 m.

Avalanche problems



Danger ratings

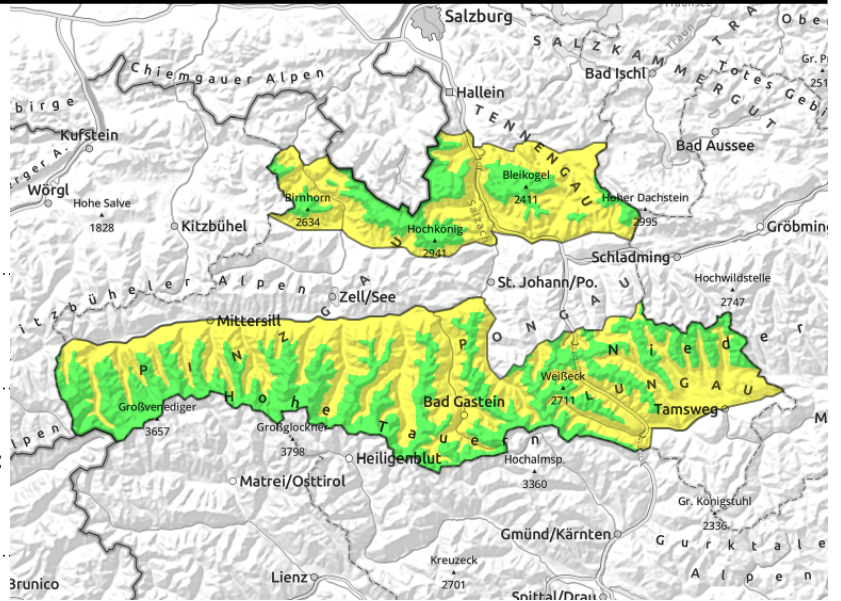


Expositions



25.04.2021, afternoon

Tennengebirge, Gosaukamm, Steinernes Meer, Hochkönig, Hagengebirge, Göllstock, Loferer und Leoganger Steinberge, Großvenedigergruppe Nord, Großvenedigergruppe Alpenhauptkamm, Glocknergruppe Nord, Glocknergruppe Alpenhauptkamm, Goldberggruppe Nord, Goldberggruppe Alpenhauptkamm, Niedere Tauern Alpenhauptkamm, Ankogelgruppe, Muhr, Niedere Tauern Süd



loss of snowpack firmness below 2200m, due to sunshine; timing depends on steepness, altitude, aspect

few spots, near ridgelines, above 2400 m

Favourable conditions. Main problem: daytime warming.

Avalanche danger in the morning is LOW, rises to MODERATE at midday.

Wet-snow problem: the main problem currently. Limited to E-S-W aspects up to 2200m. Further up it is still winter, the snow still dry. In the afternoon and evening, some small-to-medium naturally triggered releases are possible on very-steep to extremely-steep slopes. An isolated large avalanche cannot be ruled out, but will be rare.

Dry-snow avalanches: currently these are hardly to be triggered up to 2400 m. Slight risk on extremely steep and ridgeline slopes, particularly in N-E aspects where snow is shallow.

Snowpack structure

Below 2500 m on south-facing slopes, below 1800 m on north-facing slopes the snow is hard in early morning. A few hundred metres further up, breakable crusts and (on north-facing slopes and in high alpine regions) dry powder. As a result of solar radiation, the uppermost layers soften up with differing quickness, on shady slopes the snow remains dry for longer. On very steep grassy slopes the snowpack is gliding over the ground.

Slightly weak layers, potential fracture points for slab avalanches exist in the uppermost 20-30 cm of the snowpack near the melt-freeze crusts between the last rounds of snowfall and near the recently formed snowdrift accumulations near ridgelines.

Weather

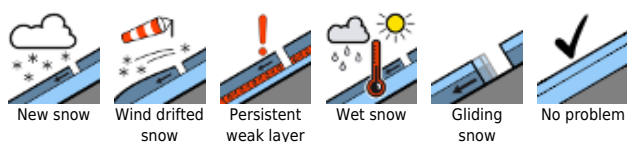
Sunday: initially sunshine over widespread areas, convective clouds will spread in late morning, veiling some of the peaks in early afternoon. The NW winds will be blowing at 30-40 km/hr in exposed terrain. Temperatures will be slightly lower: 0-2 degrees at 2000 m, -6 degrees at 3000 m.

Monday: some clouds from the south. Temperatures will recede slightly. At 2000 m: 0 degrees.

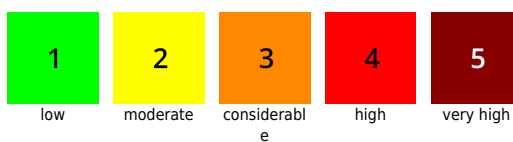
Outlook

On Monday and Tuesday, somewhat lower temperatures, but no significant change in the situation. Main concern: the minor daytime danger cycle below 2200 m.

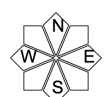
Avalanche problems



Danger ratings



Expositions



25.04.2021, afternoon

Translated by Jeffrey McCabe, www.creativtrans.com

Avalanche problems



New snow



Wind drifted
snow



Persistent
weak layer



Wet snow



Gliding
snow



No problem

Danger ratings



1

low



2

moderate



3

considerabl
e



4

high



5

very high

Expositions

