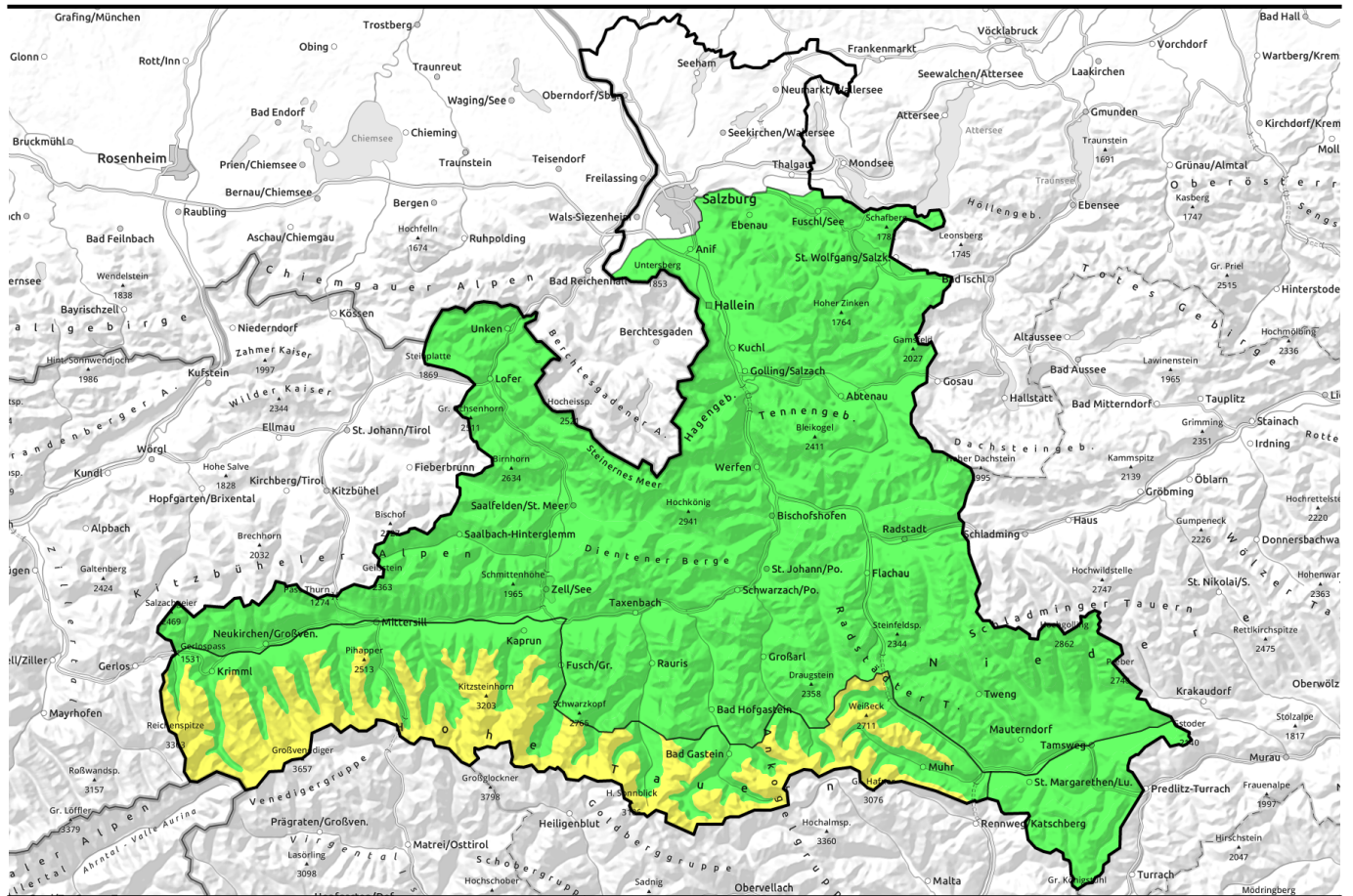


24.04.2021, morning



Favourable springtime conditions

	<p>Osterhorngruppe, Gamsfeldgruppe, Untersbergstock, Steinernes Meer, Hochkönig, Hagengebirge, Göllstock, Tennengebirge, Gosaukamm, Chiemgauer Alpen, Heutal, Reiteralpe, Loferer und Leoganger Steinberge, Kitzbüheler Alpen, Glemmtal, Oberpinzgauer Grasberge, Dientner Grasberge, Goldberggruppe Nord, Niedere Tauern Nord, Pongauer Grasberge, Niedere Tauern Alpenhauptkamm, Niedere Tauern Süd</p>	
	<p>2400 m Großvenedigergruppe Nord, Glocknergruppe Nord, Großvenedigergruppe Alpenhauptkamm, Glocknergruppe Alpenhauptkamm, Goldberggruppe Alpenhauptkamm, Ankogelgruppe, Muhr</p>	
	<p>Nockberge</p>	

Avalanche problems



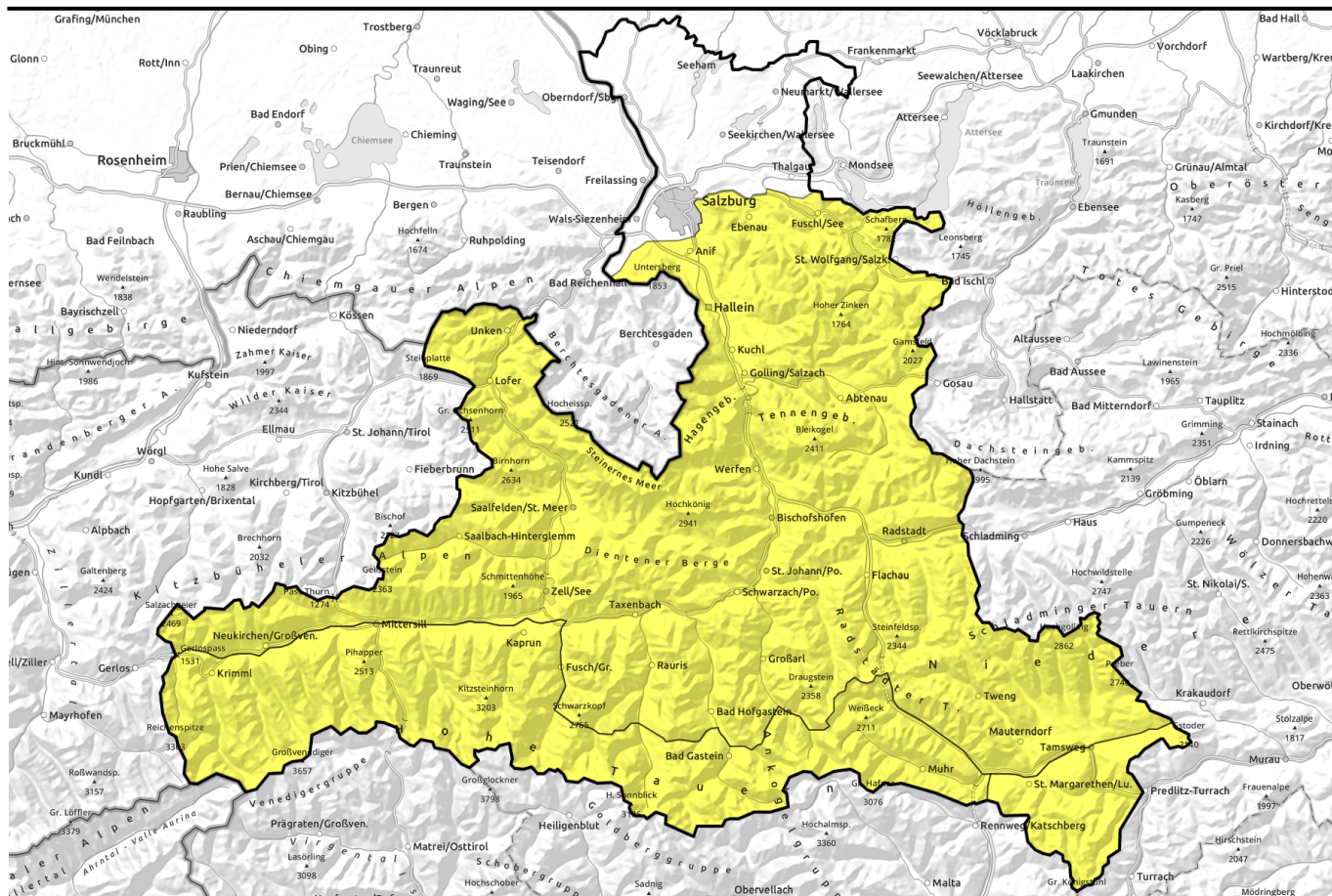
Danger ratings



Expositions



24.04.2021, afternoon



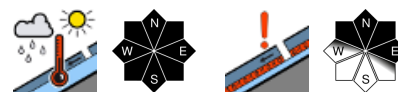
Günstige Frühjahrsverhältnisse



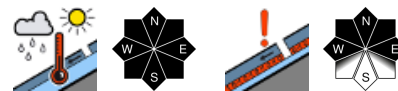
Osterhorngruppe, Gamsfeldgruppe, Untersbergstock, Steinernes Meer, Hochkönig, Hagengebirge, Göllstock, Tennengebirge, Gosaukamm, Chiemgauer Alpen, Heutal, Reiteralpe, Loferer und Leoganger Steinberge, Kitzbüheler Alpen, Glemmtal, Oberpinzgauer Grasberge, Dientner Grasberge, Goldberggruppe Nord, Niedere Tauern Nord, Pongauer Grasberge, Niedere Tauern Alpenhauptkamm, Niedere Tauern Süd



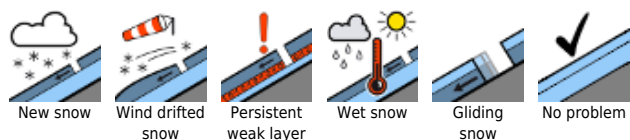
Großvenedigergruppe Nord, Glocknergruppe Nord, Großvenedigergruppe Alpenhauptkamm, Glocknergruppe Alpenhauptkamm, Goldberggruppe Alpenhauptkamm, Ankogelgruppe, Muhr



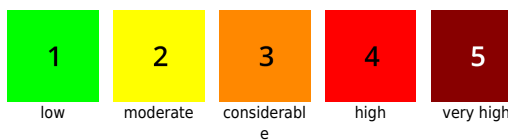
Nockberge



Avalanche problems



Danger ratings

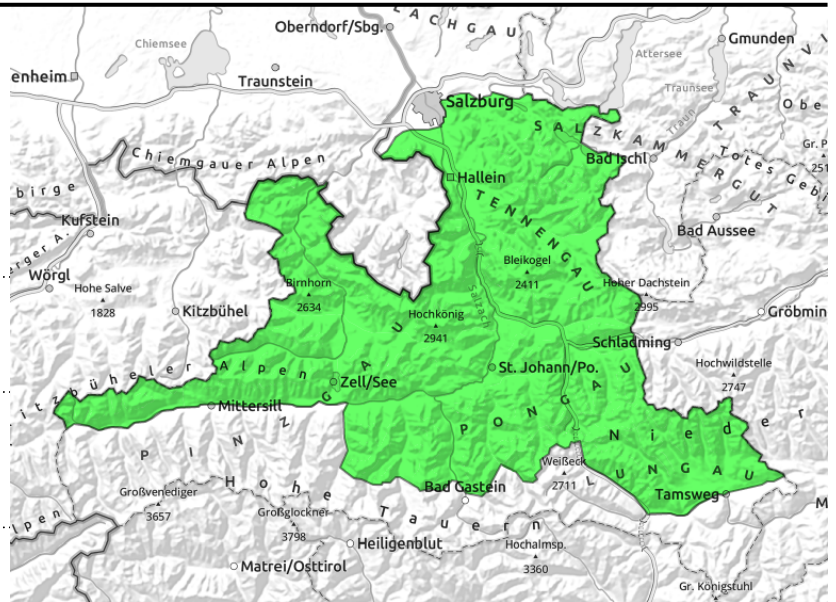


Expositions



24.04.2021, morning

Osterhorngruppe, Gamsfeldgruppe, Untersbergstock, Steinernes Meer, Hochkönig, Hagengebirge, Göllstock, Tennengebirge, Gosaukamm, Chiemgauer Alpen, Heutal, Reiteralpe, Loferer und Leoganger Steinberge, Kitzbüheler Alpen, Glemmtal, Oberpinzgauer Grasberge, Dientner Grasberge, Goldberggruppe Nord, Niedere Tauern Nord, Pongauer Grasberge, Niedere Tauern Alpenhauptkamm, Niedere Tauern Süd



superficial loss of firmness, timing dependent on steepness, altitude, aspect



few ridgeline spots, in gullies, above 2400 m

Plan daytime danger cycle in your tour!

Avalanche danger in the morning is LOW, later rises to MODERATE.

Wet-snow problem: some small-to-medium naturally triggered avalanches are possible in steep to extremely-steep terrain in the afternoon and evening. Isolated large-sized avalanches cannot be ruled out, but will be seldom. On sunny slopes in southern and western aspects up to high altitudes the snow is soft. Also isolated medium-sized glide-snow avalanches in extremely steep grass-covered terrain are possible.

Dry-snow avalanches: seldom triggerable. Isolated danger spots above 2400 m in extremely steep ridgeline terrain due to slight old-snow problem. Unfavourable spots: transitions from shallow to deep snow, esp. in northern aspects.

Snowpack structure

Below 2400m on south-facing slopes, below 1600m on north-facing slopes, the snow in early morning is hard. A few hundred metres further up, breakable crusts and (on north-facing slopes and in high alpine regions) dry powder. As a result of solar radiation, the uppermost layers soften up with differing quickness, on shady slopes the snow remains dry for longer. On very steep grassy slopes the snowpack is gliding over the ground.

Weak layers, potential fracture points for slab avalanches exist in the uppermost 20-30 cm of the snowpack near the melt-freeze crusts between the last rounds of snowfall and near the recently formed snowdrift accumulations near ridgelines.

Weather

Saturday: sunny and clear, excellent visibility. Intermittent paper-thin high-altitude clouds well above summit level. Nearly no wind. Warmer than recently, and low air moisture. At 2000 m, 0 to 4 degrees; at 3000 m, -4 degrees.

Sunday: no longer quite as sunny. Convective cloud build-up at differing speeds, even the peaks could disappear in fog. In inneralpine regions, the first few hours could be clear. In the afternoon, short rain showers are possible. NW winds at 30 km/hr, temperatures slightly lower.

Avalanche problems



New snow



Wind drifted snow



Persistent weak layer



Wet snow



Gliding snow



No problem

Danger ratings



1

low



2

moderate



3

considerable



4

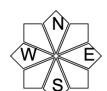
high



5

very high

Expositions

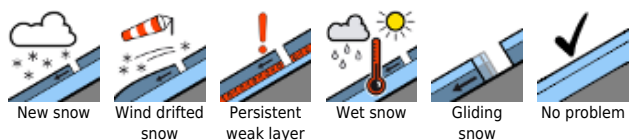


24.04.2021, morning

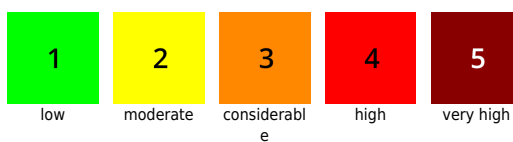
Outlook

On Sunday and Monday, no significant change is expected. Heed the daytime danger cycle!
Enjoyment, risk of falling and potential dangers due to wet-snow releases need to be seen in that perspective.

Avalanche problems



Danger ratings

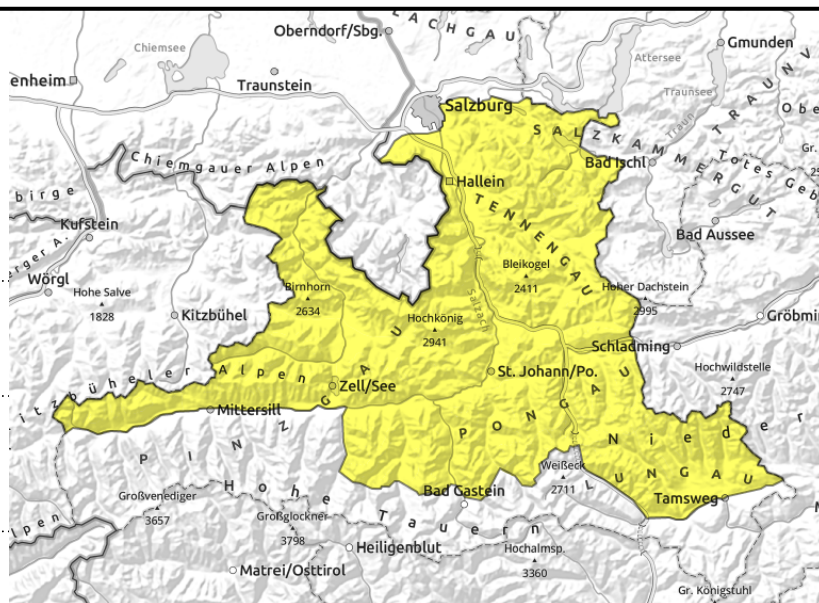


Expositions



24.04.2021, afternoon

Osterhorngruppe, Gamsfeldgruppe, Untersbergstock, Steinernes Meer, Hochkönig, Hagengebirge, Göllstock, Tennengebirge, Gosaukamm, Chiemgauer Alpen, Heutal, Reiteralpe, Loferer und Leoganger Steinberge, Kitzbüheler Alpen, Glemmtal, Oberpinzgauer Grasberge, Dientner Grasberge, Goldberggruppe Nord, Niedere Tauern Nord, Pongauer Grasberge, Niedere Tauern Alpenhauptkamm, Niedere Tauern Süd



superficial loss of firmness, timing dependent on steepness, altitude, aspect



few ridgeline spots, in gullies, above 2400 m

Plan daytime danger cycle in your tour!

Avalanche danger in the morning is LOW, later rises to MODERATE.

Wet-snow problem: some small-to-medium naturally triggered avalanches are possible in steep to extremely-steep terrain in the afternoon and evening. Isolated large-sized avalanches cannot be ruled out, but will be seldom. On sunny slopes in southern and western aspects up to high altitudes the snow is soft. Also isolated medium-sized glide-snow avalanches in extremely steep grass-covered terrain are possible.

Dry-snow avalanches: seldom triggerable. Isolated danger spots above 2400 m in extremely steep ridgeline terrain due to slight old-snow problem. Unfavourable spots: transitions from shallow to deep snow, esp. in northern aspects.

Snowpack structure

Below 2400m on south-facing slopes, below 1600m on north-facing slopes, the snow in early morning is hard. A few hundred metres further up, breakable crusts and (on north-facing slopes and in high alpine regions) dry powder. As a result of solar radiation, the uppermost layers soften up with differing quickness, on shady slopes the snow remains dry for longer. On very steep grassy slopes the snowpack is gliding over the ground.

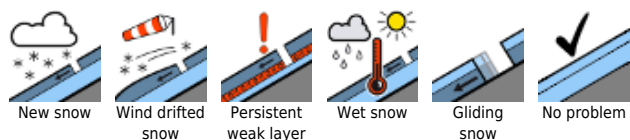
Weak layers, potential fracture points for slab avalanches exist in the uppermost 20-30 cm of the snowpack near the melt-freeze crusts between the last rounds of snowfall and near the recently formed snowdrift accumulations near ridgelines.

Weather

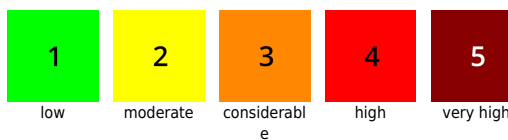
Saturday: sunny and clear, excellent visibility. Intermittent paper-thin high-altitude clouds well above summit level. Nearly no wind. Warmer than recently, and low air moisture. At 2000 m, 0 to 4 degrees; at 3000 m, -4 degrees.

Sunday: no longer quite as sunny. Convective cloud build-up at differing speeds, even the peaks could disappear in fog. In inneralpine regions, the first few hours could be clear. In the afternoon, short rain showers are possible. NW winds at 30 km/hr, temperatures slightly lower.

Avalanche problems



Danger ratings



Expositions



24.04.2021, afternoon

Outlook

On Sunday and Monday, no significant change is expected. Heed the daytime danger cycle!
Enjoyment, risk of falling and potential dangers due to wet-snow releases need to be seen in that perspective.

Avalanche problems



New snow



Wind drifted
snow



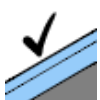
Persistent
weak layer



Wet snow



Gliding
snow



No problem

Danger ratings



1

low



2

moderate



3

considerabl
e



4

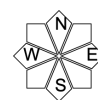
high



5

very high

Expositions



24.04.2021, morning

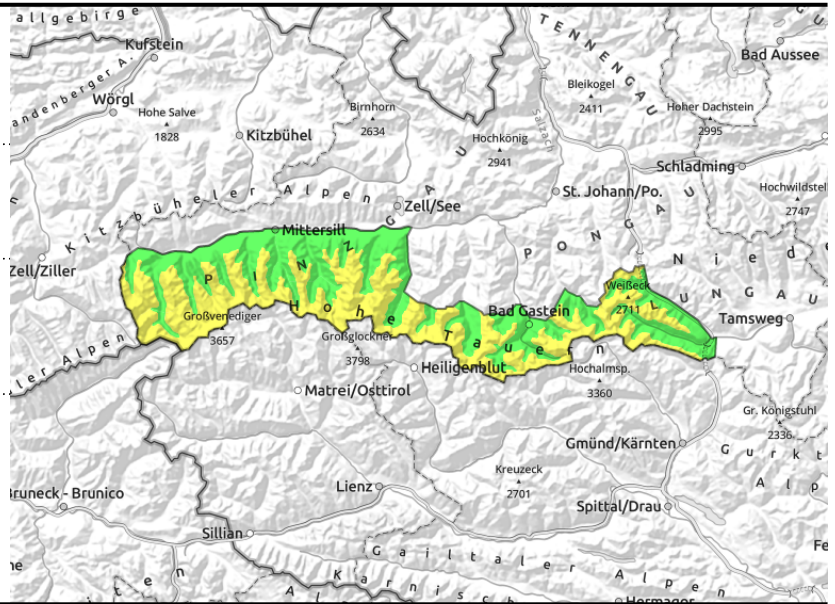
Großvenedigergruppe Nord, Glocknergruppe Nord, Großvenedigergruppe Alpenhauptkamm, Glocknergruppe Alpenhauptkamm, Goldberggruppe Alpenhauptkamm, Ankogelgruppe, Muhr



superficial loss of firmness, timing dependent on steepness, altitude, aspect



few ridgeline spots, in gullies, above 2400 m



Main problem: daytime warming

Avalanche danger above 2400 m is MODERATE all day long. Below 2400 m, daytime cycle of LOW to MODERATE.

Wet-snow problem: some small-to-medium naturally triggered avalanches are possible in steep to extremely-steep terrain in the afternoon and evening. Isolated large-sized avalanches cannot be ruled out, but will be seldom. On sunny slopes in southern and western aspects up to high altitudes the snow is soft. Also isolated medium-sized glide-snow avalanches in extremely steep grass-covered terrain are possible.

Dry-snow avalanches: seldom triggerable. Isolated danger spots above 2400 m in extremely steep ridgeline terrain due to slight old-snow problem. Unfavourable spots: transitions from shallow to deep snow, esp. in extended northern aspects.

Snowpack structure

Below 2400m on south-facing slopes, below 1600m on north-facing slopes, the snow in early morning is hard. A few hundred metres further up, breakable crusts and (on north-facing slopes and in high alpine regions) dry powder. As a result of solar radiation, the uppermost layers soften up with differing quickness, on shady slopes the snow remains dry for longer. On very steep grassy slopes the snowpack is gliding over the ground.

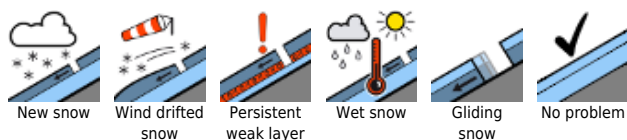
Weak layers, potential fracture points for slab avalanches exist in the uppermost 20-30 cm of the snowpack near the melt-freeze crusts between the last rounds of snowfall and near the recently formed snowdrift accumulations near ridgelines.

Weather

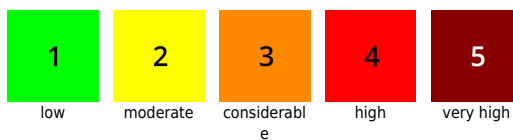
Saturday: sunny and clear, excellent visibility. Intermittent paper-thin high-altitude clouds well above summit level. Nearly no wind. Warmer than recently, and low air moisture. At 2000 m, 0 to 4 degrees; at 3000 m, -4 degrees.

Sunday: no longer quite as sunny. Convective cloud build-up at differing speeds, even the peaks could disappear in fog. In inneralpine regions, the first few hours could be clear. In the afternoon, short rain showers are possible. NW winds at 30 km/hr, temperatures slightly lower.

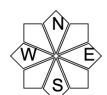
Avalanche problems



Danger ratings



Expositions

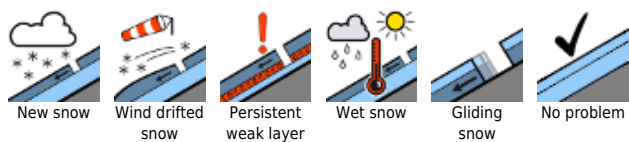


24.04.2021, morning

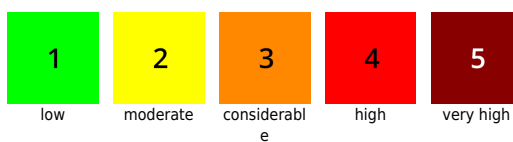
Outlook

On Sunday and Monday, no significant change is expected. Heed the daytime danger cycle!
Enjoyment, risk of falling and potential dangers due to wet-snow releases need to be seen in that perspective.

Avalanche problems



Danger ratings

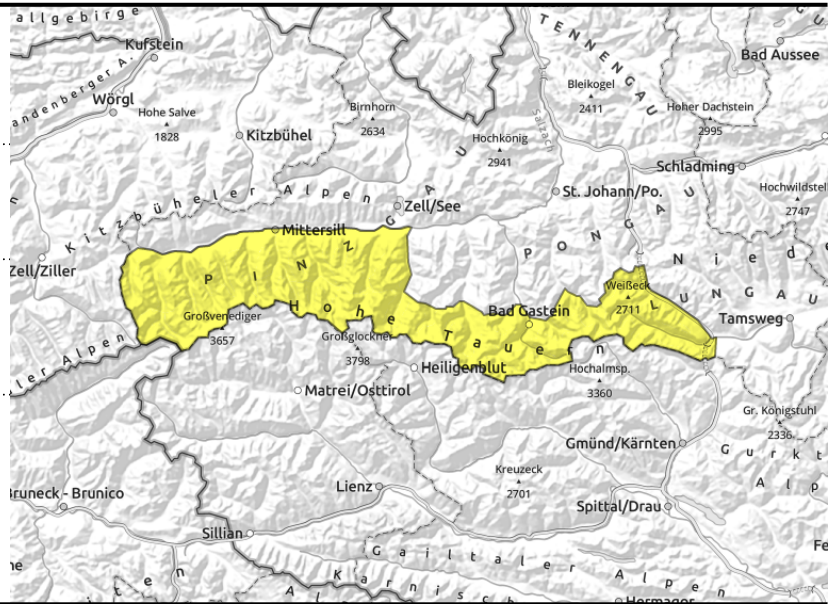


Expositions



24.04.2021, afternoon

Großvenedigergruppe Nord, Glocknergruppe Nord,
Großvenedigergruppe Alpenhauptkamm,
Glocknergruppe Alpenhauptkamm, Goldberggruppe
Alpenhauptkamm, Ankogelgruppe, Muhr



superficial loss of firmness,
timing dependent on
steepness, altitude, aspect



few ridgeline spots, in gullies,
above 2400 m

Main problem: daytime warming

Avalanche danger above 2400 m is MODERATE all day long. Below 2400 m, daytime cycle of LOW to MODERATE.

Wet-snow problem: some small-to-medium naturally triggered avalanches are possible in steep to extremely-steep terrain in the afternoon and evening. Isolated large-sized avalanches cannot be ruled out, but will be seldom. On sunny slopes in southern and western aspects up to high altitudes the snow is soft. Also isolated medium-sized glide-snow avalanches in extremely steep grass-covered terrain are possible.

Dry-snow avalanches: seldom triggerable. Isolated danger spots above 2400 m in extremely steep ridgeline terrain due to slight old-snow problem. Unfavourable spots: transitions from shallow to deep snow, esp. in extended northern aspects.

Snowpack structure

Below 2400m on south-facing slopes, below 1600m on north-facing slopes, the snow in early morning is hard. A few hundred metres further up, breakable crusts and (on north-facing slopes and in high alpine regions) dry powder. As a result of solar radiation, the uppermost layers soften up with differing quickness, on shady slopes the snow remains dry for longer. On very steep grassy slopes the snowpack is gliding over the ground.

Weak layers, potential fracture points for slab avalanches exist in the uppermost 20-30 cm of the snowpack near the melt-freeze crusts between the last rounds of snowfall and near the recently formed snowdrift accumulations near ridgelines.

Weather

Saturday: sunny and clear, excellent visibility. Intermittent paper-thin high-altitude clouds well above summit level. Nearly no wind. Warmer than recently, and low air moisture. At 2000 m, 0 to 4 degrees; at 3000 m, -4 degrees.

Sunday: no longer quite as sunny. Convective cloud build-up at differing speeds, even the peaks could disappear in fog. In inneralpine regions, the first few hours could be clear. In the afternoon, short rain showers are possible. NW winds at 30 km/hr, temperatures slightly lower.

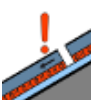
Avalanche problems



New snow



Wind drifted
snow



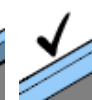
Persistent
weak layer



Wet snow

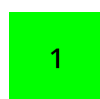


Gliding
snow



No problem

Danger ratings



1

low



2

moderate



3

considerabl
e



4

high



5

very high

Expositions

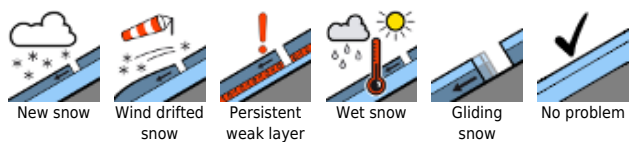


24.04.2021, afternoon

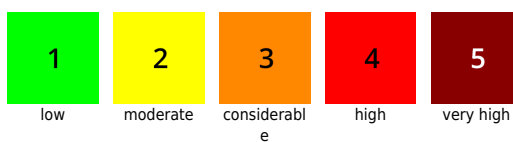
Outlook

On Sunday and Monday, no significant change is expected. Heed the daytime danger cycle!
Enjoyment, risk of falling and potential dangers due to wet-snow releases need to be seen in that perspective.

Avalanche problems



Danger ratings



Expositions



24.04.2021, morning

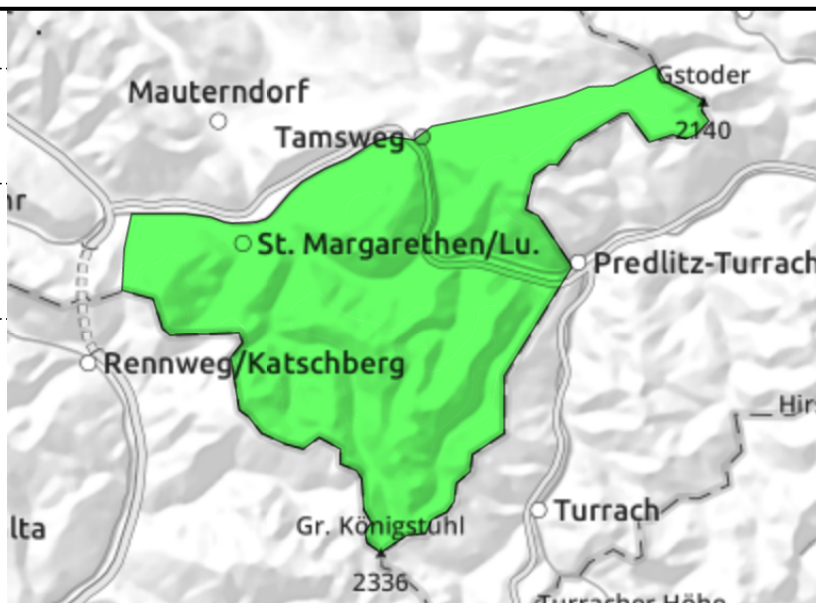
Nockberge



Daytime cycle of wet-snow avalanche danger, small-to-medium sized



old ridgeline snowdrift patches, small, only very few spots in extremely steep terrain



Daytime danger cycle, snow often very soft in afternoon

Danger of avalanches is LOW, but increases by midday to MODERATE due to solar radiation and daytime warming. Both additional loading and naturally, small-to-medium wet loose-snow avalanches are possible in very steep terrain.

Both naturally and through additional loading, small-to-medium wet-snow avalanches are possible in very steep terrain.

In ridgeline extremely-steep terrain, in addition, there are isolated avalanche prone locations for dry-snow slab avalanches (including medium-sized ones). Particularly treacherous: transitions from shallow to deeper snow (or vice-versa).

Snowpack structure

The snowpack is compact and melt-freeze encrusted (capable of bearing loads on sunny slopes). also with breakable wind crusts. With solar radiation the snowpack turns to firn on sunny slopes, losing firmness on very steep slopes. In the afternoon, the loss of firmness intensifies due to melt-water. Near ridgelines there are older, mostly very compact snowdrift patches generated by northerly winds.

Weather

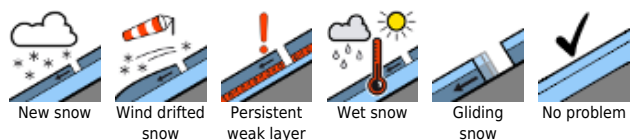
Saturday: sunny and clear, excellent visibility. Intermittent paper-thin high-altitude clouds well above summit level. Nearly no wind. Warmer than recently, and low air moisture. At 2000 m, 0 to 4 degrees.

Sunday: no longer quite as sunny. Convective cloud build-up at differing speeds. Strong northerly wind. A bit cooler.

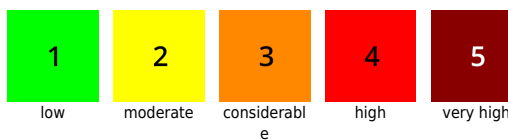
Outlook

No significant change is expected.

Avalanche problems



Danger ratings



Expositions



24.04.2021, afternoon

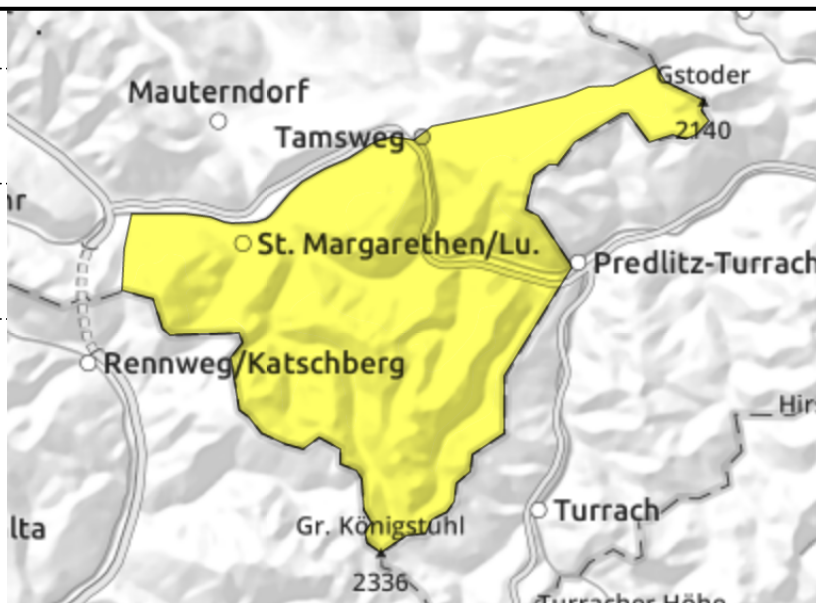
Nockberge



Daytime cycle of wet-snow avalanche danger, small-to-medium sized



old ridgeline snowdrift patches, small, only very few spots in extremely steep terrain



Daytime danger cycle, snow often very soft in afternoon

Danger of avalanches is LOW, but increases by midday to MODERATE due to solar radiation and daytime warming. Both additional loading and naturally, small-to-medium wet loose-snow avalanches are possible in very steep terrain.

Both naturally and through additional loading, small-to-medium wet-snow avalanches are possible in very steep terrain.

In ridgeline extremely-steep terrain, in addition, there are isolated avalanche prone locations for dry-snow slab avalanches (including medium-sized ones). Particularly treacherous: transitions from shallow to deeper snow (or vice-versa).

Snowpack structure

The snowpack is compact and melt-freeze encrusted (capable of bearing loads on sunny slopes). also with breakable wind crusts. With solar radiation the snowpack turns to firn on sunny slopes, losing firmness on very steep slopes. In the afternoon, the loss of firmness intensifies due to melt-water. Near ridgelines there are older, mostly very compact snowdrift patches generated by northerly winds.

Weather

Saturday: sunny and clear, excellent visibility. Intermittent paper-thin high-altitude clouds well above summit level. Nearly no wind. Warmer than recently, and low air moisture. At 2000 m, 0 to 4 degrees.

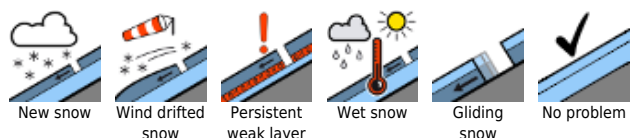
Sunday: no longer quite as sunny. Convective cloud build-up at differing speeds. Strong northerly wind. A bit cooler.

Outlook

No significant change is expected.

Translated by Jeffrey McCabe, www.creativtrans.com

Avalanche problems



Danger ratings



Expositions

