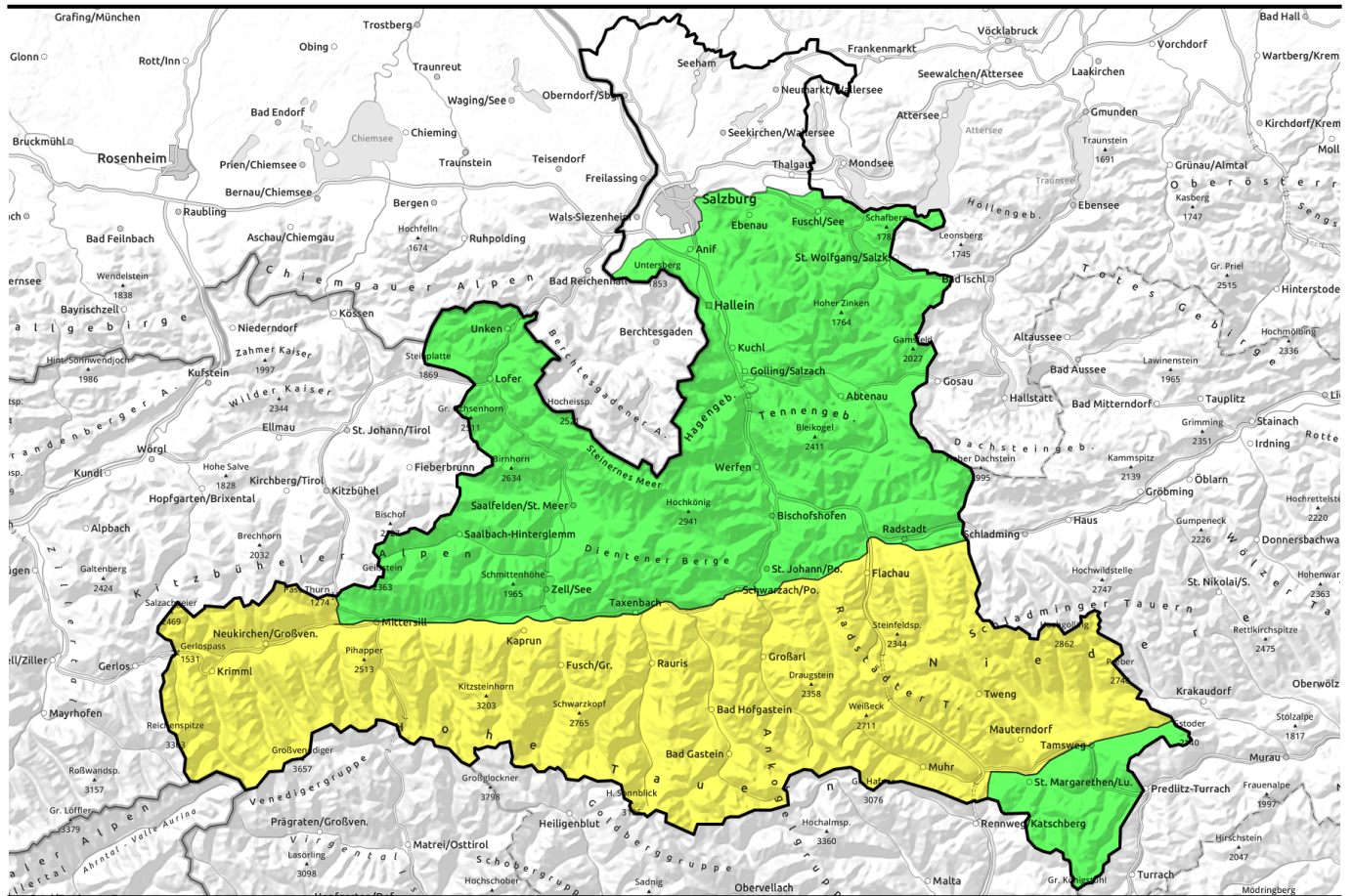


23.04.2021, morning



Varyingly hardened crusts soften up

	<p>Niedere Tauern Nord, Niedere Tauern Alpenhauptkamm, Goldberggruppe Alpenhauptkamm, Oberpinzgauer Grasberge, Goldberggruppe Nord, Glocknergruppe Nord, Großvenedigergruppe Nord, Großvenedigergruppe Alpenhauptkamm, Glocknergruppe Alpenhauptkamm, Ankogelgruppe, Muhr, Niedere Tauern Süd</p>	
	<p>Untersbergstock, Osterhorngruppe, Gamsfeldgruppe, Chiemgauer Alpen, Heutal, Reiteralpe, Leoganger Steinberge, Steinernes Meer, Hochkönig, Hagengebirge, Göllstock, Tennengebirge, Gosaukamm, Kitzbüheler Alpen, Glemmtal, Dientner Grasberge, Pongauer Grasberge</p>	
	<p>Nockberge</p>	

Avalanche problems



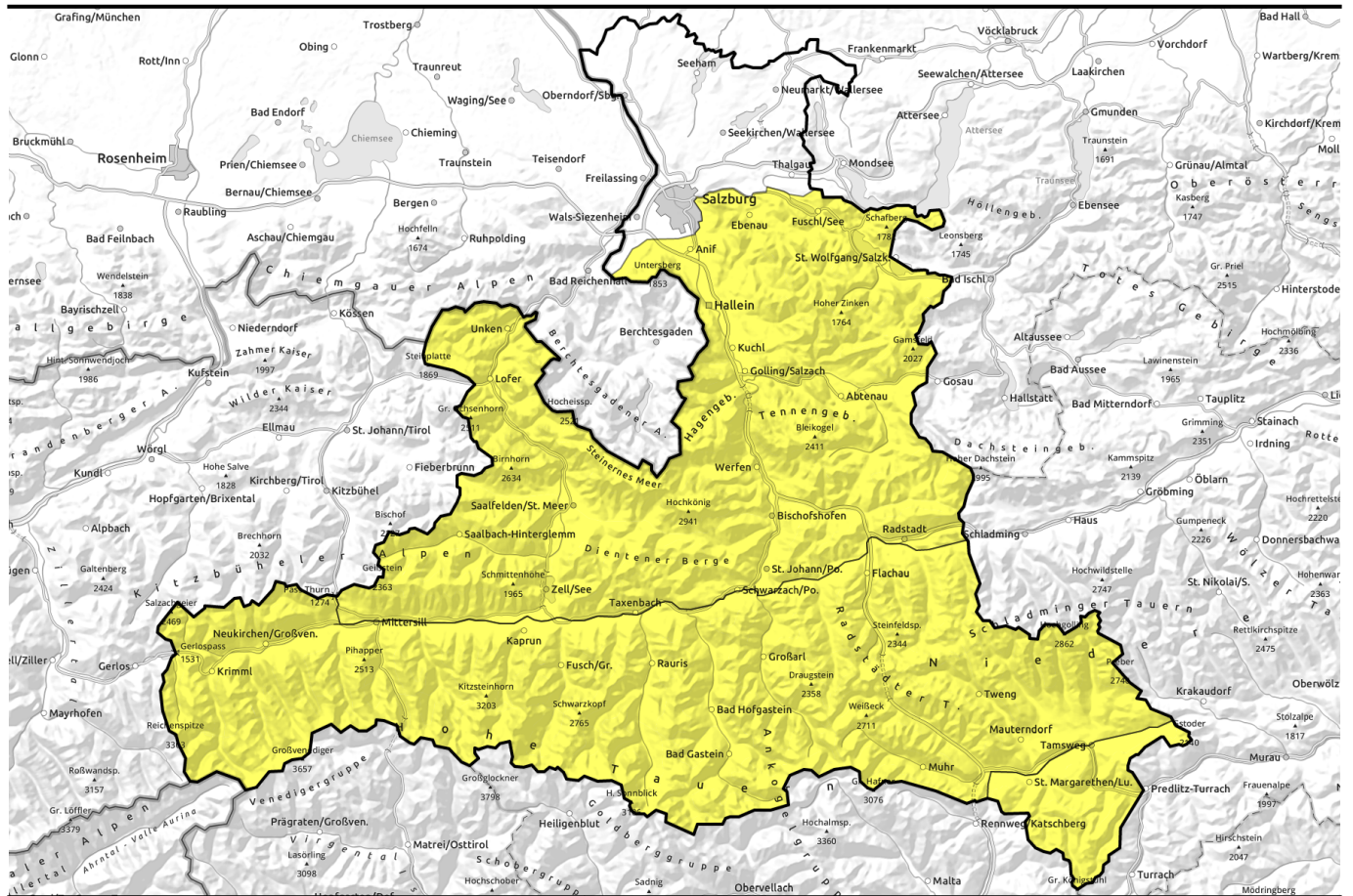
Danger ratings



Expositions



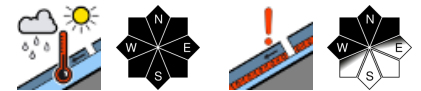
23.04.2021, afternoon



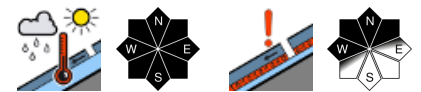
Unterschiedlich tragfähiger Harsch weicht auf



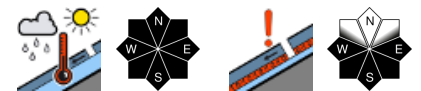
Niedere Tauern Nord, Niedere Tauern Alpenhauptkamm, Goldberggruppe Alpenhauptkamm, Oberpinzgauer Grasberge, Goldberggruppe Nord, Glocknergruppe Nord, Großvenedigergruppe Nord, Großvenedigergruppe Alpenhauptkamm, Glocknergruppe Alpenhauptkamm, Ankogelgruppe, Muhr, Niedere Tauern Süd



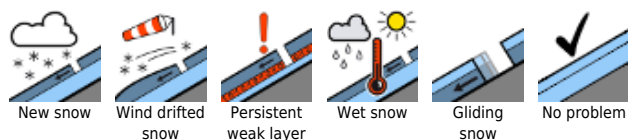
Untersbergstock, Osterhorngruppe, Gamsfeldgruppe, Chiemgauer Alpen, Heutal, Reiteralpe, Loferer und Leoganger Steinberge, Steinernes Meer, Hochkönig, Hagengebirge, Göllstock, Tennengebirge, Gosaukamm, Kitzbüheler Alpen, Glemmtal, Dientner Grasberge, Pongauer Grasberge



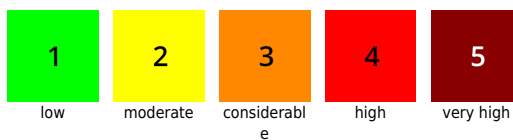
Nockberge



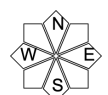
Avalanche problems



Danger ratings

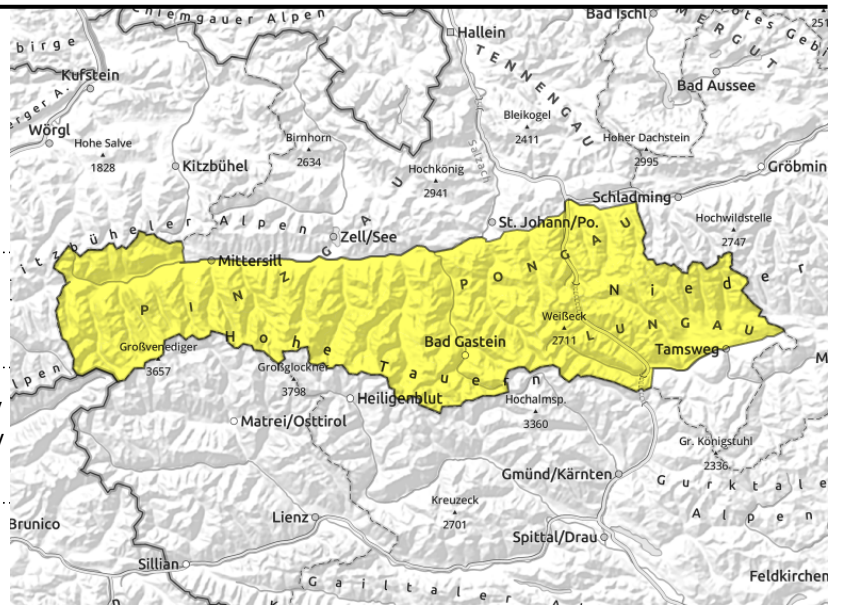


Expositions



23.04.2021

Niedere Tauern Nord, Niedere Tauern Alpenhauptkamm, Goldberggruppe Alpenhauptkamm, Oberpinzgauer Grasberge, Goldberggruppe Nord, Glocknergruppe Nord, Großvenedigergruppe Nord, Großvenedigergruppe Alpenhauptkamm, Glocknergruppe Alpenhauptkamm, Ankogelgruppe, Muhr, Niedere Tauern Süd



swift daytime cycle of naturally triggered avalanches, on sunny slopes up to 2500 m



above 2500m, triggerable in transitions from shallow to deep snow

Naturally triggered avalanches early on sunny slopes

Avalanche danger will rise to MODERATE already during the morning.

Wet-snow problem: numerous small-to-medium (isolated large-sized) naturally triggered wet loose-snow avalanches in very-steep to extremely-steep terrain, on sunny slopes up to 2500m. Also medium-sized glide-snow avalanches are possible on extremely steep grassy slopes.

Dry-snow avalanches: above 2000m in isolated spots in extremely steep and ridgeline terrain where a medium-to-large dry-snow slab avalanche can be triggered (old-snow problem, large additional loading, transitions from shallow to deeper snow). In steep ridgeline terrain at high altitude, in addition, caution urged towards fresh, thin snowdrifts: danger of falling.

Snowpack structure

Below 1500-1800m the snowpack is generally much moistened and only thinly capable of bearing loads, losing firmness swiftly during the daytime due to solar radiation. At higher altitudes, 510 cm of graupel on Thursday, on sunny slopes the snowpack is thoroughly wet. On shady slopes the fresh snow was deposited atop a dry, loosely-packed old-snowpack crust above 2200 m. On very steep grassy slopes the snowpack glides over the ground. Potential fracture points for slab avalanches exist in the near-surface layers of the melt-freeze encrusted old snowpack above 2000 m, esp. in western aspects in high alpine regions large-area triggerings have been observed recently. In exposed ridgeline terrain at high altitude, there are thin snowdrift patches which were generated by strong W/N winds.

Weather

Last night the skies were partly cloudy, remaining low lying residual clouds dispersed in early morning hours. During the daytime on Friday there will be unperturbed touring weather in backcountry, sunshine in the morning, as of midday a few harmless convective clouds, but visibility will be nearly unlimited. A light to moderate NW wind will be blowing. At 2000 m: from -5 to 0 degrees; at 3000 m, from -9 to -5 degrees.

Following a night of clear skies on Friday night, lots of sunshine on Saturday and merely a few thin cirrus clouds. Moderate (at most) northerly winds. Temperature at all altitudes 2 to 3 degrees milder

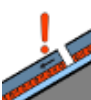
Avalanche problems



New snow



Wind drifted snow



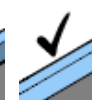
Persistent weak layer



Wet snow

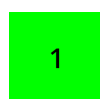


Gliding snow



No problem

Danger ratings



1

low



2

moderate



3

considerable



4

high



5

very high

Expositions



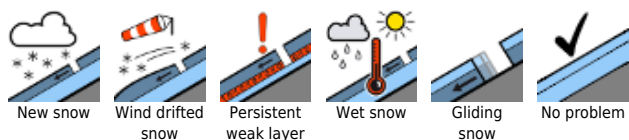
23.04.2021

than on the previous day.

Outlook

Favourable springtime conditions, with melt-freeze crusts and firn on Saturday in early morning and until midday. Daytime cycle of avalanche danger should be heeded. Naturally triggered avalanches are possible on steep south-facing slopes up to high altitudes.

Avalanche problems



Danger ratings

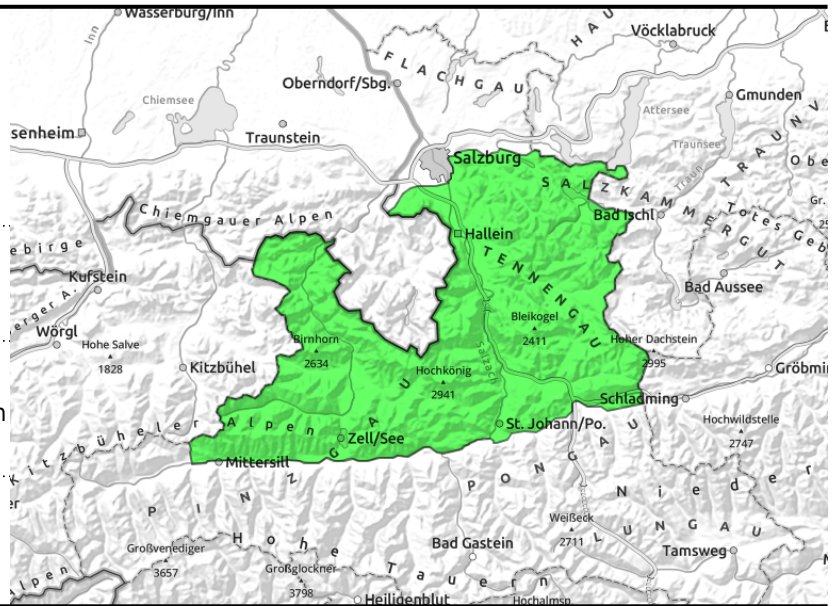


Expositions



23.04.2021, morning

Untersbergstock, Osterhorngruppe, Gamsfeldgruppe, Chiemgauer Alpen, Heutal, Reiteralpe, Loferer und Leoganger Steinberge, Steinernes Meer, Hochkönig, Hagengebirge, Göllstock, Tennengebirge, Gosaukamm, Kitzbüheler Alpen, Glemmtal, Dientner Grasberge, Pongauer Grasberge



depending on solar radiation and showers, lost of firmness in the morning



near ridges, in gullies, above 2000 m

Caution: observe daily cycle of avalanche danger

Avalanche danger is initially LOW, then rises to MODERATE as of midday:

Wet-snow problem: numerous small-to-medium (isolated large-sized) naturally triggered wet loose-snow avalanches in very-steep to extremely-steep terrain, on sunny slopes up to 2500m. Also medium-sized glide-snow avalanches are possible on extremely steep grassy slopes.

Dry-snow avalanches: above 2000m in isolated spots in extremely steep and ridgeline terrain where a medium-to-large dry-snow slab avalanche can be triggered (old-snow problem, large additional loading, transitions from shallow to deeper snow). In steep ridgeline terrain at high altitude, in addition, caution urged towards fresh, thin snowdrifts: danger of falling.

Snowpack structure

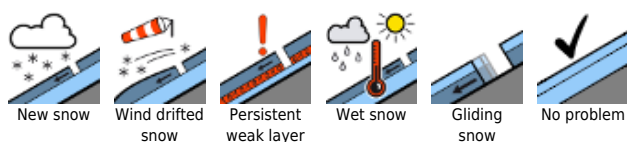
Below 1400-1600m the snowpack is generally much moistened and only thinly capable of bearing loads, losing firmness swiftly during the daytime due to solar radiation. At higher altitudes, 510 cm of graupel on Thursday, on sunny slopes the snowpack is thoroughly wet. On shady slopes the fresh snow was deposited atop a dry, loosely-packed old-snowpack crust above 2200 m. On very steep grassy slopes the snowpack glides over the ground. Potential fracture points for slab avalanches exist in the near-surface layers of the melt-freeze encrusted old snowpack above 2000 m, esp. in western aspects in high alpine regions large-area triggerings have been observed recently. In exposed ridgeline terrain at high altitude, there are thin snowdrift patches which were generated by strong W/N winds.

Weather

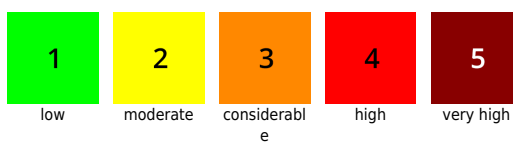
Last night the skies were partly cloudy, remaining low lying residual clouds dispersed in early morning hours. During the daytime on Friday there will be unperturbed touring weather in backcountry, sunshine in the morning, as of midday a few harmless convective clouds, but visibility will be nearly unlimited. A light to moderate NW wind will be blowing. At 2000 m: from -5 to 0 degrees; at 3000 m, from -9 to -5 degrees.

Following a night of clear skies on Friday night, lots of sunshine on Saturday and merely a few thin cirrus clouds. Moderate (at most) northerly winds. Temperature at all altitudes 2 to 3 degrees milder than on the previous day.

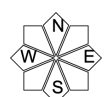
Avalanche problems



Danger ratings



Expositions

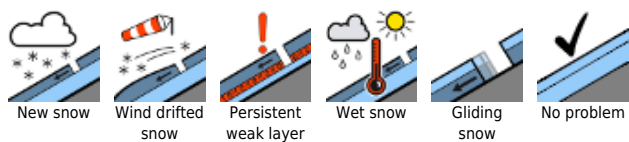


23.04.2021, morning

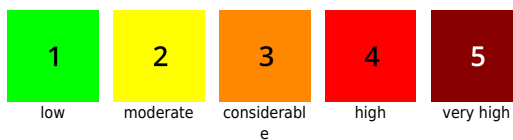
Outlook

Favourable springtime conditions, with melt-freeze crusts and firn on Saturday in early morning and until midday. Daytime cycle of avalanche danger should be heeded. Naturally triggered avalanches are possible on steep south-facing slopes up to high altitudes.

Avalanche problems



Danger ratings

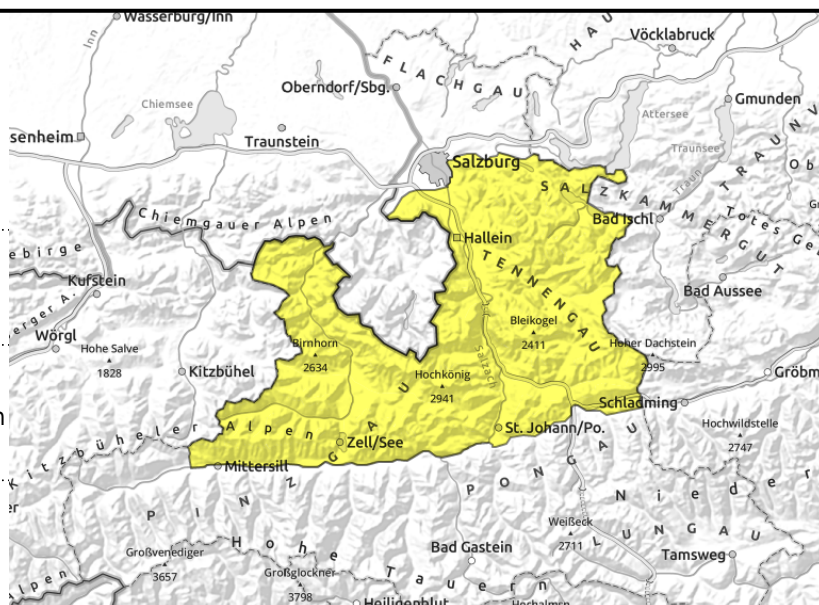


Expositions



23.04.2021, afternoon

Untersbergstock, Osterhorngruppe, Gamsfeldgruppe, Chiemgauer Alpen, Heutal, Reiteralpe, Loferer und Leoganger Steinberge, Steinernes Meer, Hochkönig, Hagengebirge, Göllstock, Tennengebirge, Gosaukamm, Kitzbüheler Alpen, Glemmtal, Dientner Grasberge, Pongauer Grasberge



depending on solar radiation and showers, lost of firmness in the morning



near ridges, in gullies, above 2000 m

Caution: observe daily cycle of avalanche danger

Avalanche danger is initially LOW, then rises to MODERATE as of midday:

Wet-snow problem: numerous small-to-medium (isolated large-sized) naturally triggered wet loose-snow avalanches in very-steep to extremely-steep terrain, on sunny slopes up to 2500m. Also medium-sized glide-snow avalanches are possible on extremely steep grassy slopes.

Dry-snow avalanches: above 2000m in isolated spots in extremely steep and ridgeline terrain where a medium-to-large dry-snow slab avalanche can be triggered (old-snow problem, large additional loading, transitions from shallow to deeper snow). In steep ridgeline terrain at high altitude, in addition, caution urged towards fresh, thin snowdrifts: danger of falling.

Snowpack structure

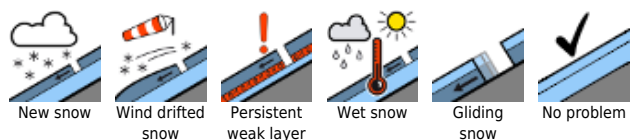
Below 1400-1600m the snowpack is generally much moistened and only thinly capable of bearing loads, losing firmness swiftly during the daytime due to solar radiation. At higher altitudes, 510 cm of graupel on Thursday, on sunny slopes the snowpack is thoroughly wet. On shady slopes the fresh snow was deposited atop a dry, loosely-packed old-snowpack crust above 2200 m. On very steep grassy slopes the snowpack glides over the ground. Potential fracture points for slab avalanches exist in the near-surface layers of the melt-freeze encrusted old snowpack above 2000 m, esp. in western aspects in high alpine regions large-area triggerings have been observed recently. In exposed ridgeline terrain at high altitude, there are thin snowdrift patches which were generated by strong W/N winds.

Weather

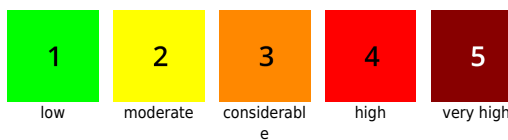
Last night the skies were partly cloudy, remaining low lying residual clouds dispersed in early morning hours. During the daytime on Friday there will be unperturbed touring weather in backcountry, sunshine in the morning, as of midday a few harmless convective clouds, but visibility will be nearly unlimited. A light to moderate NW wind will be blowing. At 2000 m: from -5 to 0 degrees; at 3000 m, from -9 to -5 degrees.

Following a night of clear skies on Friday night, lots of sunshine on Saturday and merely a few thin cirrus clouds. Moderate (at most) northerly winds. Temperature at all altitudes 2 to 3 degrees milder than on the previous day.

Avalanche problems



Danger ratings



Expositions

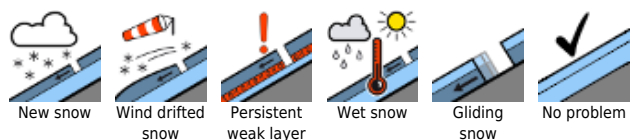


23.04.2021, afternoon

Outlook

Favourable springtime conditions, with melt-freeze crusts and firn on Saturday in early morning and until midday. Daytime cycle of avalanche danger should be heeded. Naturally triggered avalanches are possible on steep south-facing slopes up to high altitudes.

Avalanche problems



Danger ratings



Expositions



23.04.2021, morning

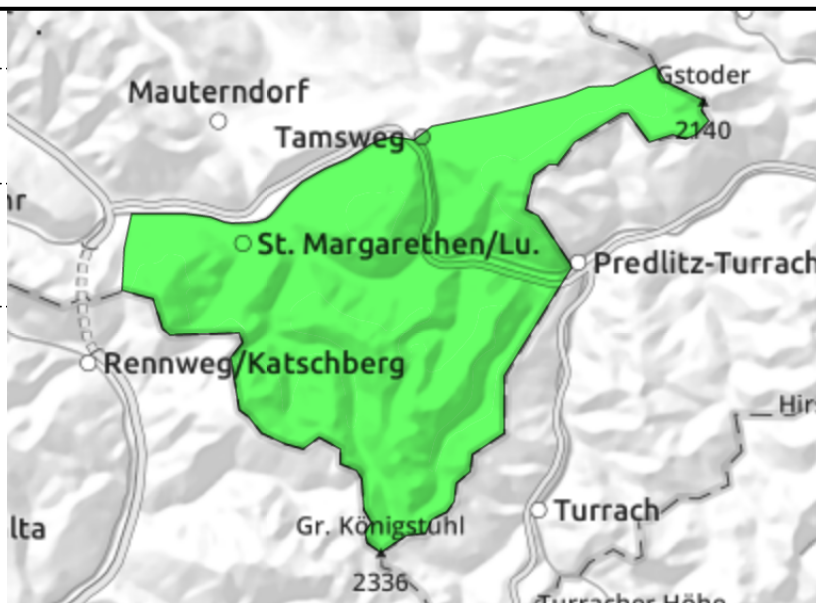
Nockberge



daytime cycle of wet-snow avalanche danger



old ridgeline snowdrift patches, small, only very few spots in extremely steep terrain



Small to medium wet-snow avalanches in daytime cycle

Snowpack structure

Danger of avalanches is LOW, but increases by midday to MODERATE due to solar radiation and daytime warming. Both additional loading and naturally, small-to-medium wet loose-snow avalanches are possible in very steep terrain. In ridgeline extremely-steep terrain, in addition, there are isolated avalanche prone locations for dry-snow slab avalanches (including medium-sized ones). Triggering points are likeliest in E-S-W aspects above 2000 m. usually by large additional loading. Particularly treacherous: transitions from shallow to deeper snow (or vice-versa).

Weather

Nocturnal skies were still overcast. Friday will start with clear skies, then comes unperturbed backcountry touring weather for winter sports enthusiasts, with sunshine all morning long. As of midday, a few harmless convective clouds, but visibility will remain nearly unlimited. Brisk NW winds (30-40 km/hr). At 2000 m: rising from -3 to +3 degrees.

Following a night of clear skies on Friday night, lots of sunshine on Saturday and merely a few thin cirrus clouds. Moderate (at most) northerly winds. Temperature at all altitudes 2 to 3 degrees milder than on the previous day.

Outlook

No significantly change is expected.

Avalanche problems



Danger ratings



Expositions



23.04.2021, afternoon

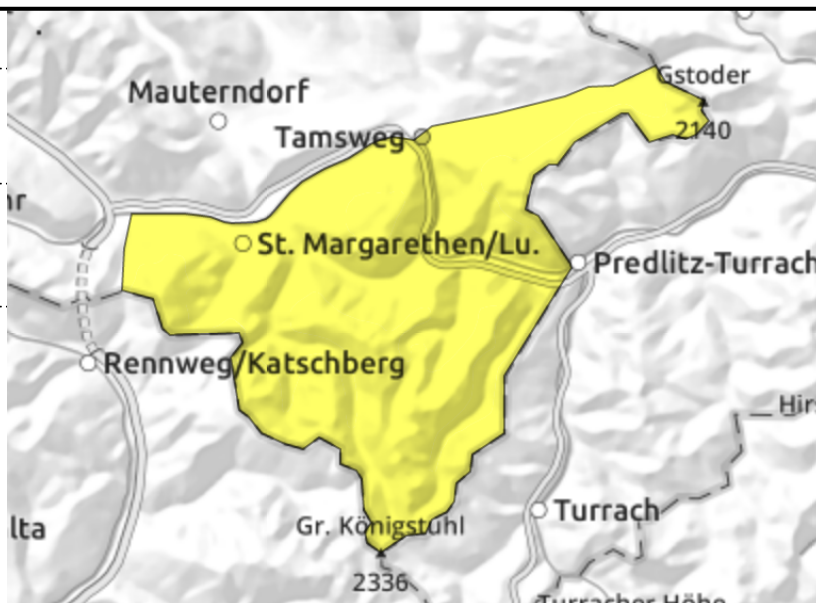
Nockberge



daytime cycle of wet-snow avalanche danger



old ridgeline snowdrift patches, small, only very few spots in extremely steep terrain



Small to medium wet-snow avalanches in daytime cycle

Snowpack structure

Danger of avalanches is LOW, but increases by midday to MODERATE due to solar radiation and daytime warming. Both additional loading and naturally, small-to-medium wet loose-snow avalanches are possible in very steep terrain. In ridgeline extremely-steep terrain, in addition, there are isolated avalanche prone locations for dry-snow slab avalanches (including medium-sized ones). Triggering points are likeliest in E-S-W aspects above 2000 m. usually by large additional loading. Particularly treacherous: transitions from shallow to deeper snow (or vice-versa).

Weather

Nocturnal skies were still overcast. Friday will start with clear skies, then comes unperturbed backcountry touring weather for winter sports enthusiasts, with sunshine all morning long. As of midday, a few harmless convective clouds, but visibility will remain nearly unlimited. Brisk NW winds (30-40 km/hr). At 2000 m: rising from -3 to +3 degrees.

Following a night of clear skies on Friday night, lots of sunshine on Saturday and merely a few thin cirrus clouds. Moderate (at most) northerly winds. Temperature at all altitudes 2 to 3 degrees milder than on the previous day.

Outlook

No significantly change is expected.

Translated by Jeffrey McCabe, www.creativtrans.com

Avalanche problems



Danger ratings



Expositions

