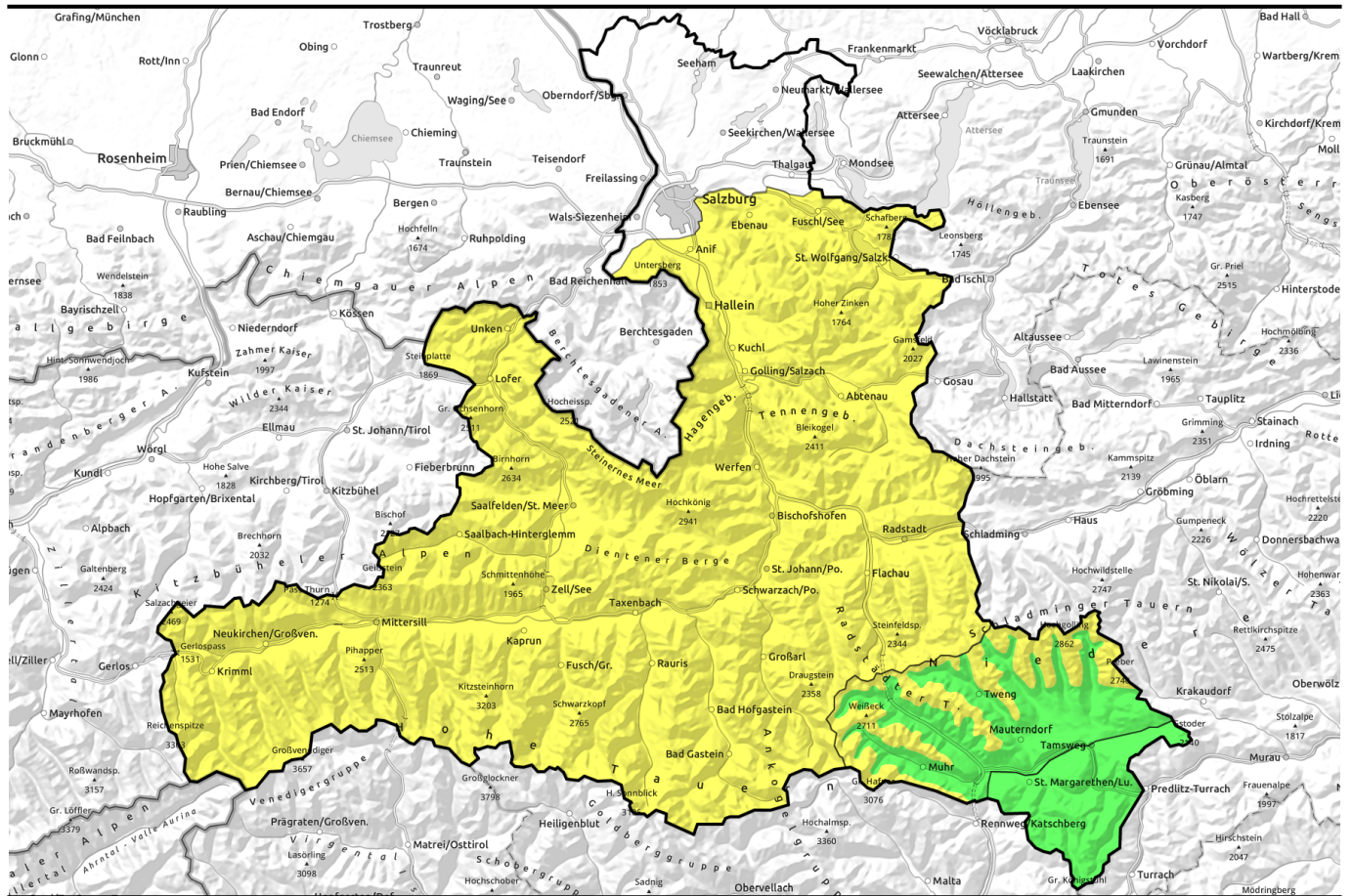


19.04.2021



Awful visibility, moist snow, avoid extremely steep terrain



Osterhorngruppe, Gamsfeldgruppe, Tennengebirge, Gosaukamm, Untersbergstock, Chiemgauer Alpen, Heutal, Reiteralpe, Steinernes Meer, Hochkönig, Hagengebirge, Göllstock, Loferer und Leoganger Steinberge, Kitzbüheler Alpen, Glemmtal, Oberpinzgauer Grasberge, Großvenedigergruppe Nord, Dientner Grasberge, Pongauer Grasberge, Goldberggruppe Nord, Niedere Tauern Alpenhauptkamm, Niedere Tauern Nord, Goldberggruppe Alpenhauptkamm, Glocknergruppe Nord, Glocknergruppe Alpenhauptkamm, Großvenedigergruppe Alpenhauptkamm



2200 m

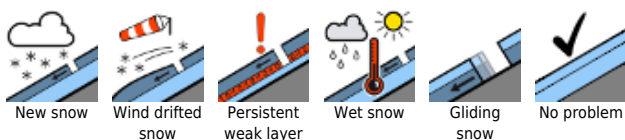
Niedere Tauern Süd, Ankogelgruppe, Muhr



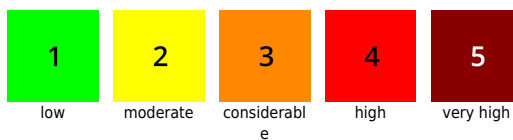
Nockberge



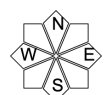
Avalanche problems



Danger ratings

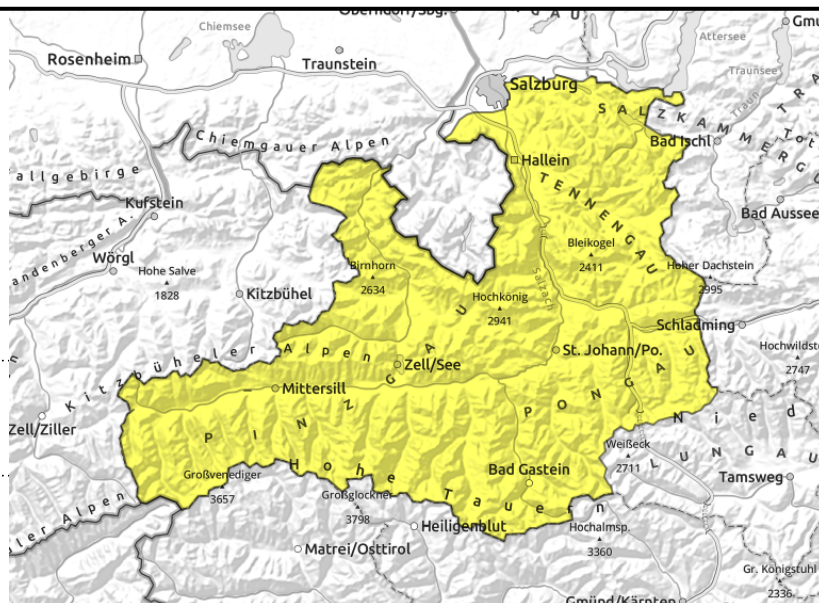


Expositions



19.04.2021

Osterhorngruppe, Gamsfeldgruppe, Tennengebirge, Gosaukamm, Untersbergstock, Chiemgauer Alpen, Heutal, Reiteralpe, Steinernes Meer, Hochkönig, Hagengebirge, Göllstock, Loferer und Leoganger Steinberge, Kitzbüheler Alpen, Glemmtal, Oberpinzgauer Grasberge, Großvenedigergruppe Nord, Dientner Grasberge, Pongauer Grasberge, Goldberggruppe Nord, Niedere Tauern Alpenhauptkamm, Niedere Tauern Nord, Goldberggruppe Alpenhauptkamm, Glocknergruppe Nord, Glocknergruppe Alpenhauptkamm, Großvenedigergruppe Alpenhauptkamm



moist/wet avalanches below 2200m in very steep terrain, small



old-snow problem above 2200m (N-E-SE) plus fresh small ridgeline drifts (W-S-E)

Wet-snow problem intensifying

Wet-snow problem: numerous small-to-medium wet snow avalanches can be expected, isolated large-sized ones cannot be ruled out but will be the exception. This applies only to very-steep to extremely-steep terrain. These will be superficial wet-snow avalanches and moist slab avalanches at high altitudes, either triggering naturally or by skiers. The active altitude band is up to 2200 m in the afternoon. Where there was lots of snow last week, medium-sized glide-snow avalanches are possible where the ground was bare prior to the snowfall.

Dry-snow avalanches: above 2200 m in isolated spots in extremely steep ridgeline terrain a medium-to-large dry-snow slab avalanche can be triggered (old-snow problem, large additional loading, N-E-SE, in transitions from shallow to deeper snow. In addition, with fresh snow and wind, there are new ridgeline snowdrifts (small, mostly shallow, W-S-E, danger of being swept along).

Snowpack structure

The fresh snow of last week has settled well, is bonded with the old snowpack. Potential fracture points exist only in isolated cases beneath the upper layer of melt-freeze crusts above about 2200m. More relevant for the current situation: the mixture of moist surface snow (rain, lacking nocturnal radiation) and increasingly wet fresh snow. This can easily begin to slide on a melt-freeze crust (usually breakable). Atop previously bare grassy slopes the entire snowpack begins to slide downhill (creeping and gliding).

Weather

Monday: The peaks will be shrouded in fog, lower fog border at 1500-1800m. Snowfall and rainfall, light to moderate, the snowfall level initially at 900m, then ascending to 1600m in the afternoon. Powerful diffuse radiation! By Tuesday morning, depending on altitude: 5-15 cm of fresh snow anticipated. In exposed terrain winds will be northerly, blowing at up to 40 km/hr. At 1500 m, +1 degree; at 2000 m, -4 degrees; at 3000 m, -10 degrees.

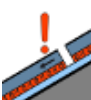
Avalanche problems



New snow



Wind drifted snow



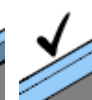
Persistent weak layer



Wet snow

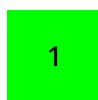


Gliding snow



No problem

Danger ratings



1

low



2

moderate



3

considerable



4

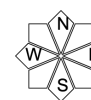
high



5

very high

Expositions



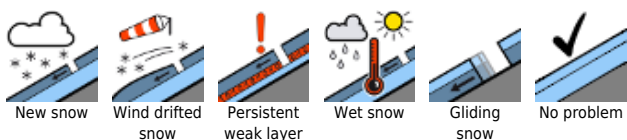
19.04.2021

Also on **Tuesday**, fog, clouds, some rainfall and snowfall, terrible visibility at least until afternoon.
Snowfall level 1800m.

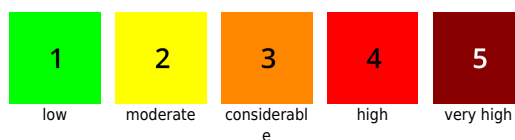
Outlook

With the daytime warming, the daily danger cycle comes more and more to the foreground, together with the pulsating wet-snow problem. Mostly MODERATE danger on Tuesday. Visibility and backcountry possibilities will be better on Wednesday.

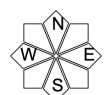
Avalanche problems



Danger ratings



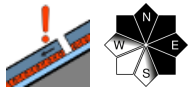
Expositions

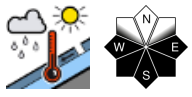


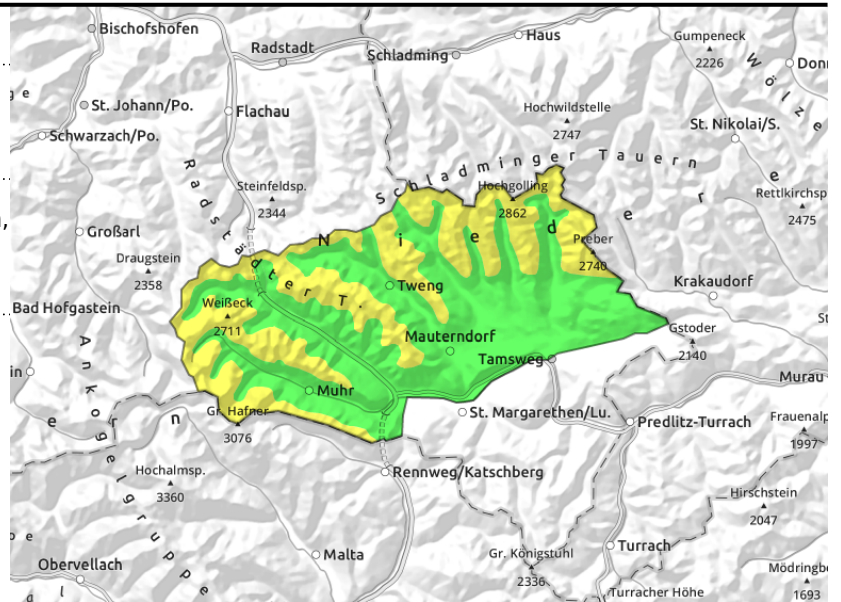
19.04.2021

Niedere Tauern Süd, Ankogelgruppe, Muhr



 old snowdrifts, ridgeline terrain, in gullies, small, mostly above 2200m

 few, small-to-medium avalanches possible below 2000m



Caution urged above 2200m

Artificial triggering: in some spots in very steep ridgeline terrain, a medium-to-large dry-snow slab avalanche can be triggered. Danger points most likely in N-E-SE aspects above 2200m. Mostly large additional loading is necessary to trigger an avalanche (group not maintaining distances, a fall, going on foot). Caution urged at rims of snowdrift masses where the snow becomes shallower.

Naturally triggered avalanches are secondary: glide-snow avalanche possible in isolated cases. In extremely-steep grassy terrain where the slopes were bare in March. Superficial loose-snow avalanches and slides also possible in extremely steep, mostly rocky terrain, mostly below 2000 m.

Snowpack structure

The most recent snowfall has settled well due to diffuse radiation. Bonding to the compact old snowpack is good. Potential fracture points exist in isolated cases beneath the uppermost melt-freeze crust of the old snowpack above 2200m. Breakable crusts dominate. The fresh snow from the north is not avalanche-relevant. Atop grassy slopes which were bare prior to the snowfall, the fresh snow is gliding away.

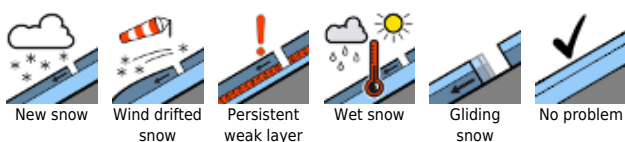
Weather

Monday: The northern peaks will be veiled in fog, further south the peaks will often be free. Occasional snowfall from the Tauern is possible, only minor amounts. Powerful diffuse radiation! Northerly winds at 40 km/hr. At 1500 m, +1 degrees, at 2000 m -3 degrees, at 3000m -10 degrees. On **Tuesday** morning, similar conditions. In the afternoon, the sun will come out somewhat more. Temperatures will rise slightly.

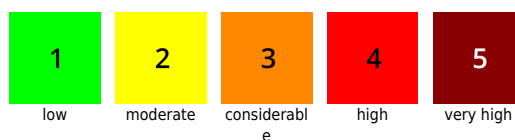
Outlook

Little change. With the daytime warming, the daily danger cycle comes more and more to the foreground, together with the pulsating wet-snow problem. Mostly MODERATE danger on Tuesday. Visibility and backcountry possibilities will be better on Wednesday.

Avalanche problems



Danger ratings



Expositions

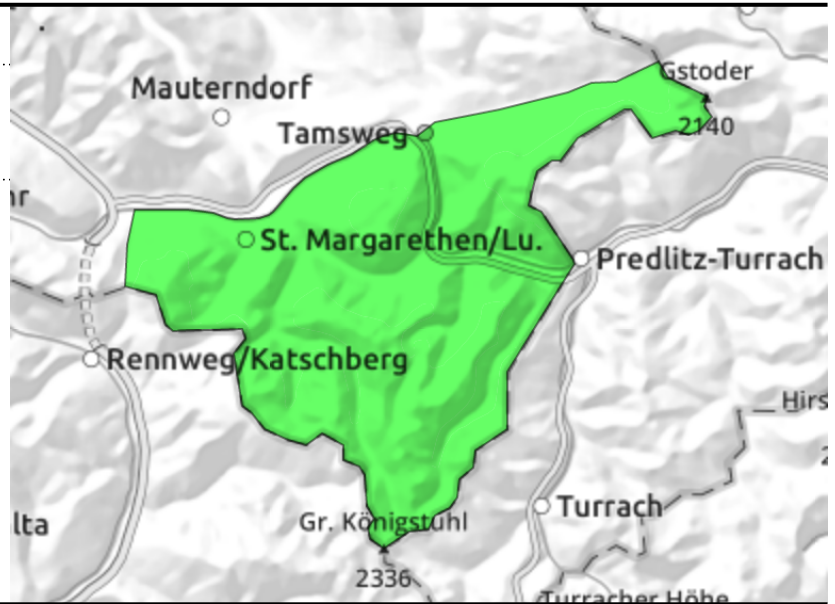


19.04.2021

Nockberge



older ridgeline snowdrifts, small, very few spots



Avalanche danger is LOW.

In very few places and some bad luck, a small dry-snow slab avalanche can be triggered. Danger spots are most likely in W-S-E aspects above 2000 m (large additional loading, extremely steep terrain, very few spots, triggerable in transitions from shallow to deeper snow). On sunny slopes near valley level, small superficial wet-snow slides are possible.

Snowpack structure

Compact surfaces dominate, sometimes breakable crusts. On steep sunny slopes the snow is softer. The fresh snow from the beginning of the week has settled well due to radiation, and transformed. Bonding to the compact old snowpack surface is generally good. Near ridgelines there are older snowdrifts from last Wednesday.

Weather

Monday: Mostly overcast skies, intermittent sunshine. Fog lower borderline at 2200m. Powerful diffuse radiation. Northerly winds at 40 km/hr. At 1500 m, +1 degrees, at 2000 m -3 degrees, at 3000m -10 degrees.

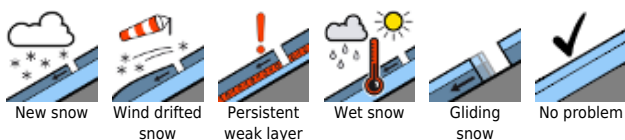
On **Tuesday** morning, similar conditions. In the afternoon, the sun will come forth somewhat more. Temperatures will rise slightly.

Outlook

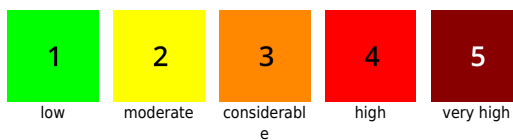
Little change. When temperatures rise at mid-week, snow and general situation can be expected to change slightly.

Translated by Jeffrey McCabe, www.creativtrans.com

Avalanche problems



Danger ratings



Expositions

