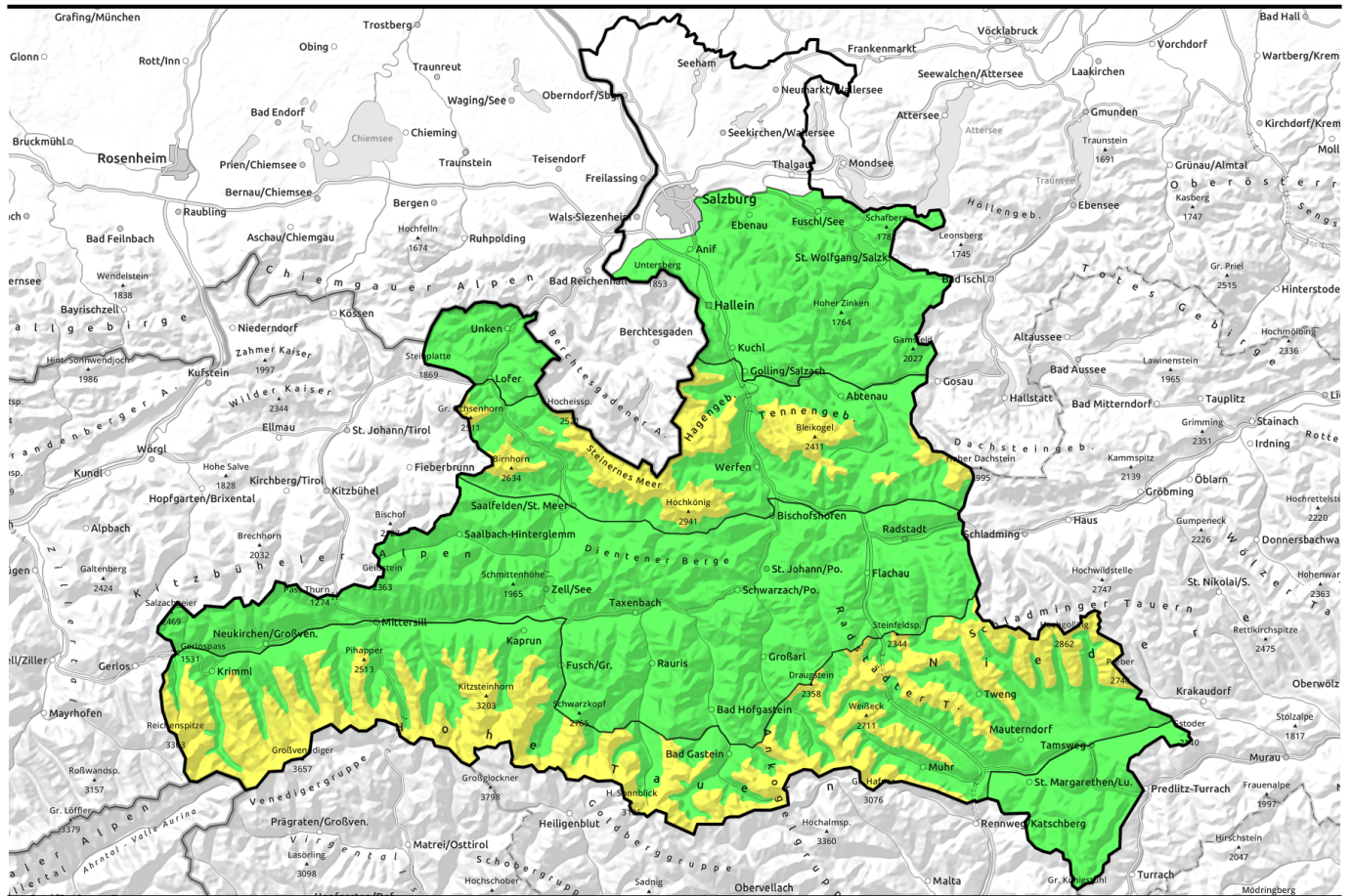



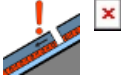
18.04.2021




Much fog, no firn, often breakable crusts

- 

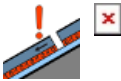
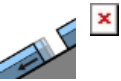
Osterhorngruppe, Gamsfeldgruppe, Untersbergstock, Chiemgauer Alpen, Heutal, Reiteralpe, Kitzbüheler Alpen, Glemmtal, Oberpinzgauer Grasberge, Pongauer Grasberge, Niedere Tauern Nord, Dientner Grasberge, Goldberggruppe Nord




- 

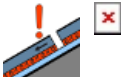
2200 m

Tennengebirge, Gosaukamm, Steinernes Meer, Hochkönig, Hagengebirge, Göllstock, Loferer und Leoganger Steinberge, Glocknergruppe Nord, Großvenedigergruppe Alpenhauptkamm, Großvenedigergruppe Nord, Niedere Tauern Alpenhauptkamm, Goldberggruppe Alpenhauptkamm, Glocknergruppe Alpenhauptkamm, Ankogelgruppe, Muhr, Niedere Tauern Süd

- 

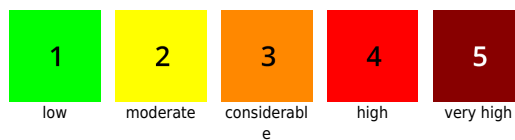
Nockberge



Avalanche problems



Danger ratings



Expositions

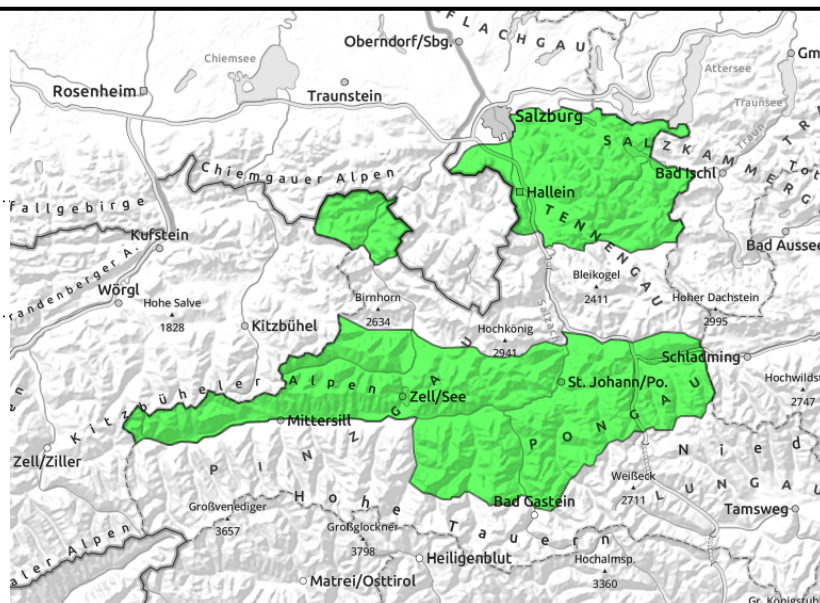


18.04.2021

Osterhorngruppe, Gamsfeldgruppe, Untersbergstock, Chiemgauer Alpen, Heutal, Reiteralpe, Kitzbüheler Alpen, Glemmtal, Oberpinzgauer Grasberge, Pongauer Grasberge, Niedere Tauern Nord, Dientner Grasberge, Goldberggruppe Nord



old snowdrifts, near ridges and in gullies, small, few danger zones



Very few avalanche prone locations

In few spots is it possible to trigger a small-to-medium dry-snow slab avalanche in ridgeline terrain. Fracture points most likely in N-E aspects through large additional loading / steep terrain, triggerable in transitions from shallow to deeper snow.

Snowpack structure

The latest fresh snow (Tuesday/Wednesday) has settled well due to diffuse radiation. Bonding to the compact old snowpack is generally good. On north-facing slopes there is still powder above 1500 m. In other aspects, breakable crusts. On grass-covered slopes where were bare prior to the snowfall, the fresh snow is gliding away.

Weather

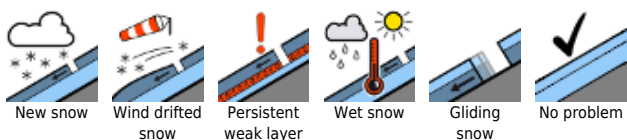
Sunday: Low-lying cloud, peaks veiled in fog (fog lower borderline at 1500-1800m), powerful diffuse radiation. Occasional precipitation. By Monday morning, about 5 cm of fresh snow expected. Light wind (in exposed terrain up to 30 km/hr from the north). At 1500 m: -2 degrees; at 2000 m; -4 degrees.

Monday: No better. Lots of fog, occasional minor snowfall, similar temperatures. Light-to-moderate northerly winds.

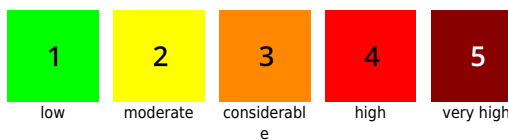
Outlook

Little change. The small amount of fresh snow has no effect in April. Only with rising temperatures (mid-week) will the snow and general situation alter somewhat.

Avalanche problems



Danger ratings

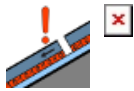
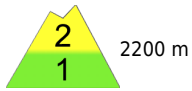
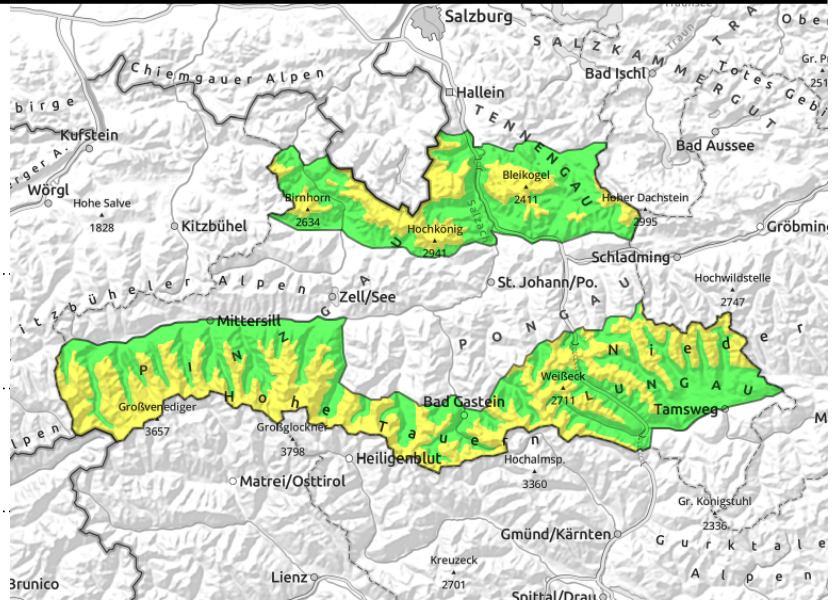


Expositions

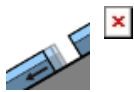


18.04.2021

Tennengebirge, Gosaukamm, Steinernes Meer, Hochkönig, Hagengebirge, Göllstock, Loferer und Leoganger Steinberge, Glocknergruppe Nord, Großvenedigergruppe Alpenhauptkamm, Großvenedigergruppe Nord, Niedere Tauern Alpenhauptkamm, Goldberggruppe Alpenhauptkamm, Glocknergruppe Alpenhauptkamm, Ankogelgruppe, Muhr, Niedere Tauern Süd



old snowdrift masses, near ridges, in gullies, small



few, mostly small naturally triggered avalanches possible below 2000m

Caution above 2200m

Artificial triggering: in isolated post on very steep ridgeline slopes a medium-to-large dry slab avalanche can be triggered. Avalanche prone locations occur in N-E-SE aspects above about 2200 m. Ordinarily, large additional loading is required to trigger a release, i.e. no distances, a fall, going on foot. Caution urged at rims of snowdrift masses where snow becomes more shallow.

Naturally triggered, a secondary theme: caution is urged in extremely steep rocky terrain in extremely steep slopes which were bare in March. There, small-to-medium dry loose-snow avalanches can trigger naturally. The likelihood of triggering is highest at midday and in early afternoon.

Snowpack structure

The latest fresh snow (Tuesday/Wednesday) has settled well due to diffuse radiation. Bonding to the compact old snowpack is generally good. On north-facing slopes there is still powder above 1500 m. In other aspects, breakable crusts. On grass-covered slopes where were bare prior to the snowfall, the fresh snow is gliding away.

Weather

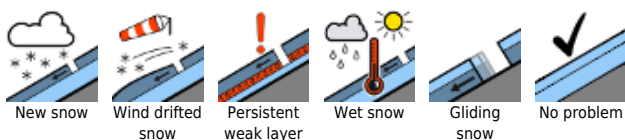
Sunday: Low-lying cloud, peaks veiled in fog (fog lower borderline at 1500-1800m), powerful diffuse radiation. Occasional precipitation. By Monday morning, about 5 cm of fresh snow expected. Light wind (in exposed terrain up to 30 km/hr from the north). At 1500 m: -2 degrees; at 2000 m; -4 degrees, at 3000 m -10 degrees.

Monday: No better. Lots of fog, occasional minor snowfall, similar temperatures. Light-to-moderate northerly winds.

Outlook

Little change. The small amount of fresh snow has no effect in April. Only with rising temperatures (mid-week) will the snow and general situation alter somewhat.

Avalanche problems



Danger ratings

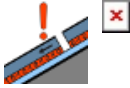


Expositions



18.04.2021

Nockberge 



near ridges, in gullies, small,
few spots above 2000m

Avalanche danger is LOW

In few spots is it possible to trigger a small-to-medum dry-snow slab avalanche in ridgeline terrain. Fracture points most likely in N-E aspects through large additional loading / steep terrain, triggerable in transitions from shallow to deeper snow.

Snowpack structure

The small amount of fresh snow from the beginning of the week has settled well due to solar radiation, to some extent transformed. Bonding to the compact old snowpack is generally good. Near ridgelines there are older snowdrifts from Wednesday.

Weather

Sunday: Low-lying cloud, peaks veiled in fog, occasional bright intervals. Northerly winds up to 30 km/hr). At 1500 m: +1degree; at 2000 m; -4 degrees.

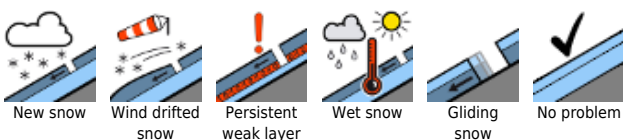
Monday: Similar conditions. Northerly winds will intensify (40 km/hr). Temperatures will be the same.

Outlook

Little change. The small amount of fresh snow has no effect in April. Only with rising temperatures (mid-week) will the snow and general situation alter somewhat.

Translated by Jeffrey McCabe, www.creativtrans.com

Avalanche problems



Danger ratings



Expositions

