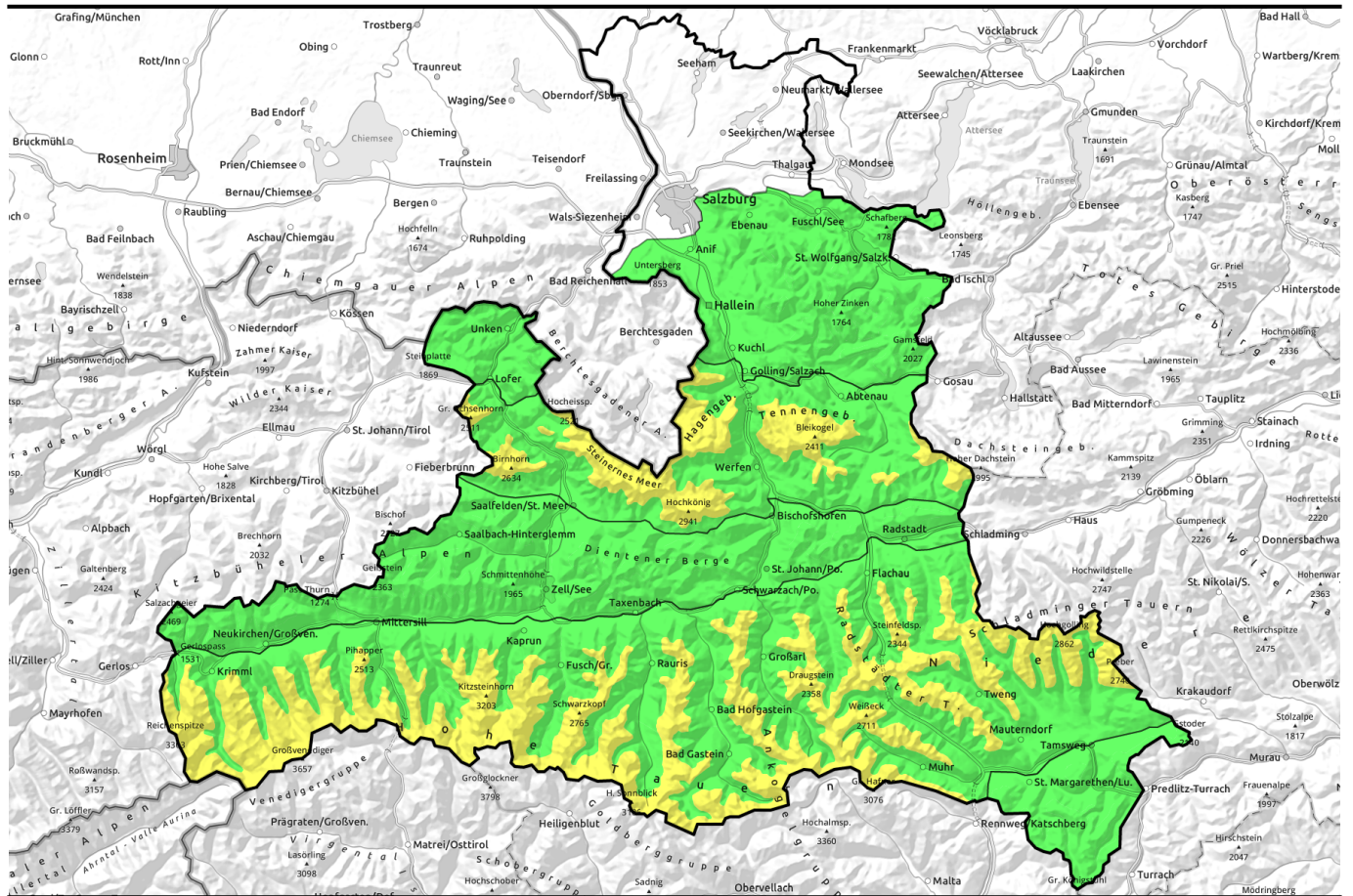


17.04.2021



Favourable conditions but no firm and lots of breakable crusts

	Osterhorngruppe, Gamsfeldgruppe, Untersbergstock, Chiemgauer Alpen, Heutal, Reiteralpe		
	Kitzbüheler Alpen, Glemmtal, Oberpinzgauer Grasberge, Dientner Grasberge, Pongauer Grasberge		
	2200 m Loferer und Leoganger Steinberge, Steinernes Meer, Hochkönig, Hagengebirge, Göllstock, Tennengebirge, Gosaukamm		
	2000 m Niedere Tauern Nord, Niedere Tauern Alpenhauptkamm, Niedere Tauern Süd, Ankogelgruppe, Muhr, Goldberggruppe Nord, Glocknergruppe Nord, Glocknergruppe Alpenhauptkamm, Großvenedigergruppe Nord, Großvenedigergruppe Alpenhauptkamm, Goldberggruppe Alpenhauptkamm		
	Nockberge		

Avalanche problems



Danger ratings



Expositions

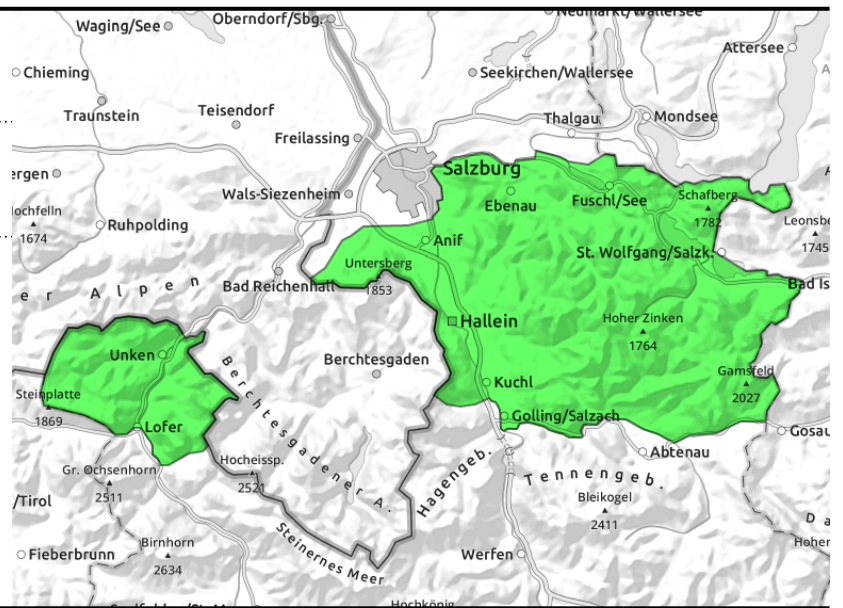


17.04.2021

**Osterhorngruppe, Gamsfeldgruppe,
Untersbergstock, Chiemgauer Alpen, Heutal,
Reiteralpe**



old snowdrifts, near ridges, in gullies, small



Hardly any avalanche prone locations

On few spots and a bit of bad luck, a small-to-medium dry snow slab can be triggered in ridgeline terrain. Danger zones are most likely in N-E aspects. By large additional loading on extremely steep slopes, triggerable in transitions from shallow to deep snow.

Snowpack structure

The latest round of fresh snow (Tuesday and Wednesday) has significantly settled with the diffuse radiation. Bonding to the compact old snowpack surface is mostly good.

Weather

Saturday: Zones above 1500 m will be veiled in fog either from the start or in early morning. Low-lying clouds dominate. Winds will be light, mostly at 20 km/hr, from the north. Not warm. At 2000 m: -7 degrees.

Sunday: Clouds will be hanging low. The peaks will mostly be shrouded in fog. Occasional precipitation is possible. By Monday morning, up to 5 cm of fresh snow anticipated above 2000 m. Temperatures are not expected to change much. Moderate-strength northerly winds.

Outlook

Little change. No firm, some breakable crusts, slight daytime cycle.

Avalanche problems



New snow



Wind drifted snow



Persistent weak layer



Wet snow



Gliding snow



No problem

Danger ratings



1

low



2

moderate



3

considerable



4

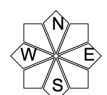
high



5

very high

Expositions



17.04.2021

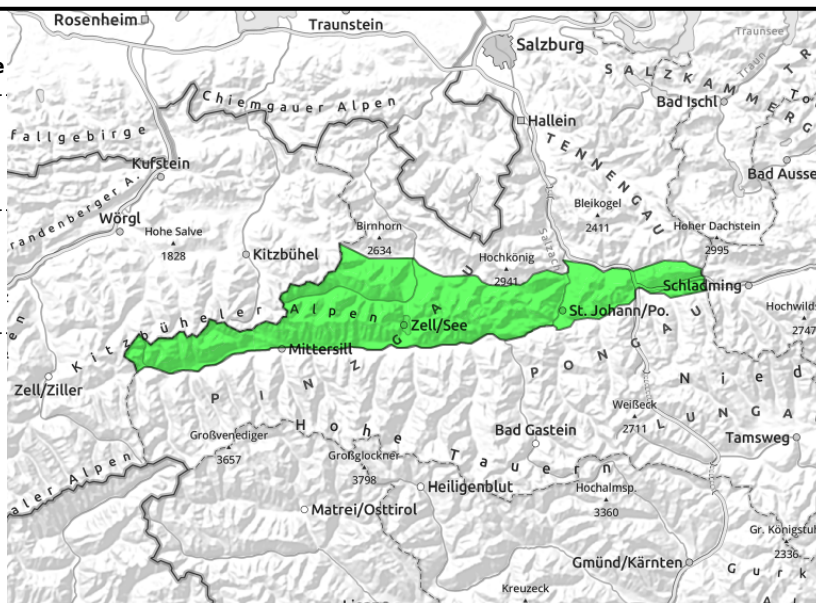
Kitzbüheler Alpen, Glemmtal, Oberpinzgauer Grasberge, Dientner Grasberge, Pongauer Grasberge



old snowdrift masses, near ridges, in gullies, small



few, mostly small naturally triggered avalanches due to sunshine



Hardly any avalanche prone locations

On few spots and a bit of bad luck, a small-to-medium dry snow slab can be triggered in ridgeline terrain. Danger zones are most likely in N-E aspects. By large additional loading on extremely steep slopes, triggerable in transitions from shallow to deep snow.

Caution is urged on extremely steep rocky slopes. There, naturally triggered slides can be triggered, either naturally or by skiers. Most likely towards midday.

Snowpack structure

The latest round of fresh snow (Tuesday and Wednesday) has significantly settled with the diffuse radiation. Bonding to the compact old snowpack surface is mostly good.

Weather

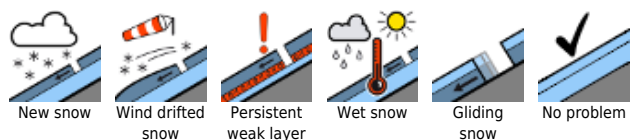
Saturday: Zones above 1500 m will be veiled in fog either from the start or in early morning. Low-lying clouds dominate. Winds will be light, mostly at 20 km/hr, from the north. Not warm. At 2000 m: -7 degrees.

Sunday: Clouds will be hanging low. The peaks will mostly be shrouded in fog. Occasional precipitation is possible. By Monday morning, up to 5 cm of fresh snow anticipated above 2000 m. Temperatures are not expected to change much. Moderate-strength northerly winds.

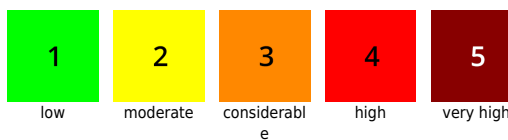
Outlook

Little change. No firn, some breakable crusts, slight daytime cycle.

Avalanche problems



Danger ratings

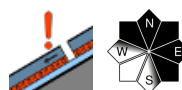


Expositions

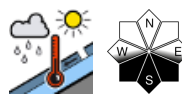


17.04.2021

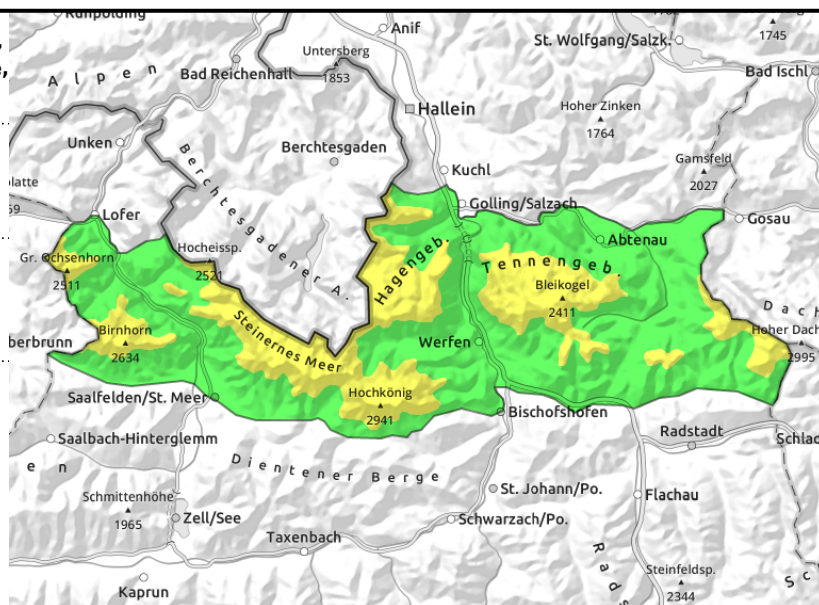
Loferer und Leoganger Steinberge, Steinernes Meer, Hochkönig, Hagengebirge, Göllstock, Tennengebirge, Gosaukamm

old snowdrift masses, near ridges, in gullies, small



few, mostly small naturally triggered avalanches due to sunshine



Careful tracking urged at high altitudes

Artificial triggering: in isolated post on very steep ridgeline slopes a medium-to-large dry slab avalanche can be triggered. Avalanche prone locations occur in N-E-SE aspects above about 2200 m. Ordinarily, large additional loading is required to trigger a release, i.e. no distances, a fall, going on foot. Caution urged at rims of snowdrift masses where snow becomes more shallow.

Naturally triggered, with sunshine, a secondary theme: caution is urged in extremely steep rocky terrain. There, small-to-medium dry loose-snow avalanches can trigger naturally. The likelihood of triggering is highest at midday and in early afternoon.

Snowpack structure

The latest round of fresh snow (Tuesday and Wednesday) has significantly settled with the diffuse radiation. Bonding to the compact old snowpack surface is mostly good. Potential fracture points are found beneath the uppermost melt-freeze encrusted layers. The moistening is superficial, dependent on altitude and aspect.

Weather

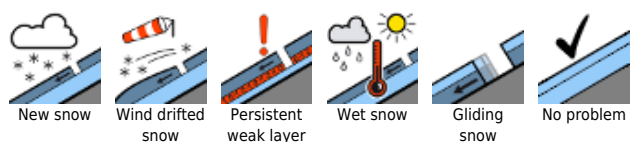
Saturday: Zones above 1500 m will be veiled in fog either from the start or in early morning. Low-lying clouds dominate. Winds will be light, mostly at 20 km/hr, from the north. Not warm. At 2000 m: -7 degrees, on Hochkönig, -12 degrees.

Sunday: Clouds will be hanging low. The peaks will mostly be shrouded in fog. Occasional precipitation is possible. By Monday morning, up to 5 cm of fresh snow anticipated above 2000 m. Temperatures are not expected to change much. Moderate-strength northerly winds.

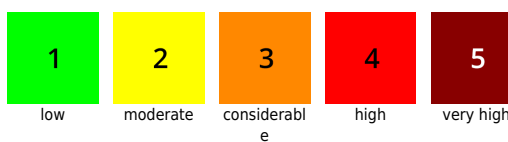
Outlook

Little change. No firm, some breakable crusts, slight daytime cycle.

Avalanche problems



Danger ratings



Expositions



17.04.2021

**Niedere Tauern Nord, Niedere Tauern
Alpenhauptkamm, Niedere Tauern Süd,
Ankogelgruppe, Muhr, Goldberggruppe Nord,
Glocknergruppe Nord, Glocknergruppe
Alpenhauptkamm, Großenedigergruppe Nord,
Großenedigergruppe Alpenhauptkamm,
Goldberggruppe Alpenhauptkamm**



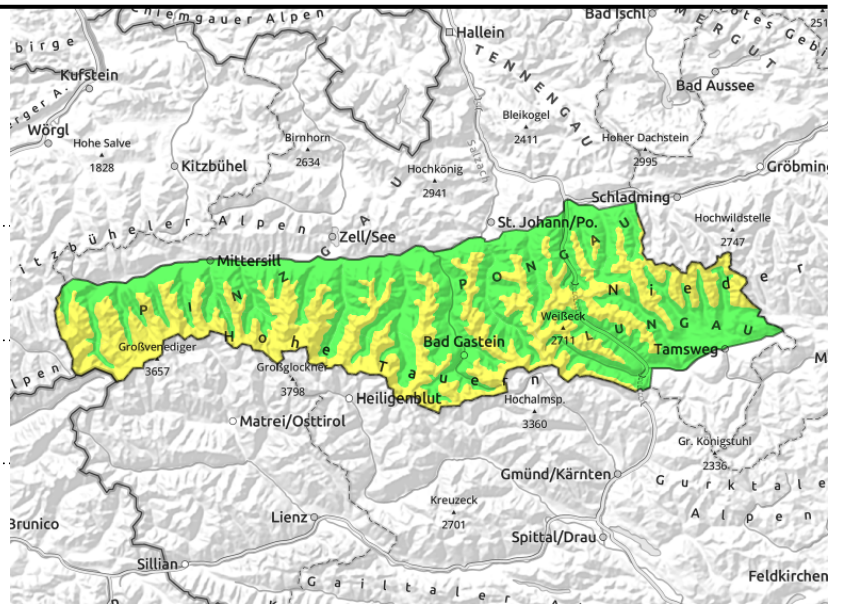
2000 m



near ridges, in gullies, large additional loading



isolated naturally triggered avalanches, small-to-medium, in rocky terrain



Caution urged above 2000 m

Artificial triggering: in isolated post on very steep ridgeline slopes a medium-to-large dry slab avalanche can be triggered. Avalanche prone locations occur in N-E-SE aspects above about 2200 m. Ordinarily, large additional loading is required to trigger a release, i.e. no distances, a fall, going on foot. Caution urged at rims of snowdrift masses where snow becomes more shallow.

Naturally triggered, with sunshine, a secondary theme: caution is urged in extremely steep rocky terrain. There, small-to-medium dry loose-snow avalanches can trigger naturally. The likelihood of triggering is highest at midday and in early afternoon.

Snowpack structure

The latest round of fresh snow (Tuesday and Wednesday) has significantly settled with the diffuse radiation. Bonding to the compact old snowpack surface is mostly good. Potential fracture points are found beneath the uppermost melt-freeze encrusted layers. The moistening is superficial, dependent on altitude and aspect.

Weather

Saturday: Zones above 1500 m will be veiled in fog either from the start or in early morning. Low-lying clouds dominate. Winds will be light, mostly at 20 km/hr, from the north. Not warm. At 2000 m: -7 degrees, at 3000 m, -12 degrees.

Sunday: Clouds will be hanging low. The peaks will mostly be shrouded in fog. Occasional precipitation is possible. By Monday morning, up to 5 cm of fresh snow anticipated above 2000 m. Temperatures are not expected to change much. Moderate-strength northerly winds.

Outlook

Little change. No firm, some breakable crusts, slight daytime cycle.

Avalanche problems



New snow



Wind drifted snow



Persistent weak layer



Wet snow



Gliding snow



No problem

Danger ratings



1

low



2

moderate



3

considerable



4

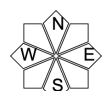
high



5

very high

Expositions

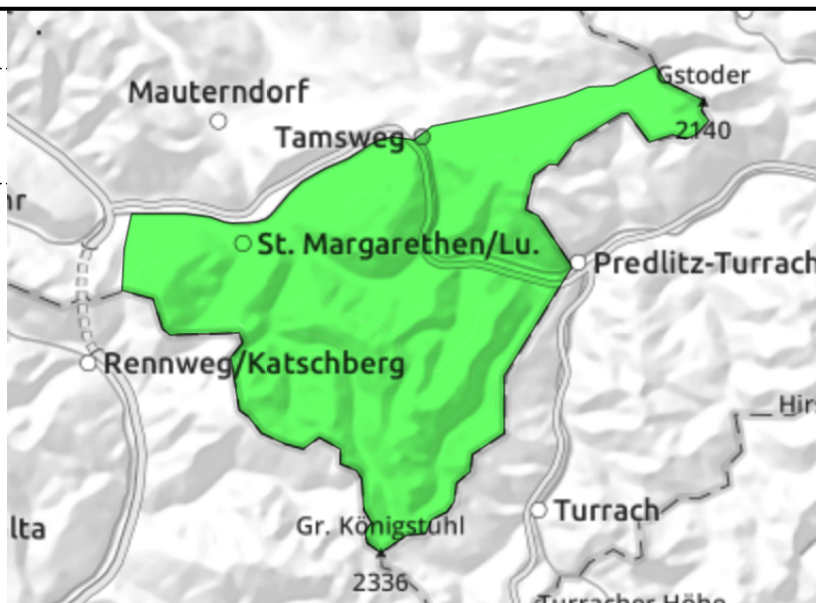


17.04.2021

Nockberge



near ridges, small, very few spots



Avalanche danger is LOW

On few spots and a bit of bad luck, a small-to-medium dry snow slab can be triggered in ridgeline terrain. Danger zones are most likely in W-S-E aspects above 2000 m, large additional loading, extremely steep terrain, very few spots, triggerable in transitions from shallow to deep snow.

Snowpack structure

The small amount of fresh snow from the beginning of the week has settled well as a result of diffuse radiation. Bonding to the compact old snowpack surface is generally good. In ridgeline terrain there are still old snowdrifts from Wednesday.

Weather

Saturday: Zones above 1500 m will be veiled in fog either from the start or in early morning. Low-lying clouds dominate. Winds will be light, mostly at 30 km/hr, from the north. Not warm. At 2000 m: -7 degrees.

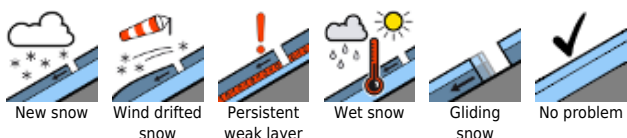
Sunday: Clouds will be hanging low. The peaks will mostly be shrouded in fog. Occasional precipitation is possible. By Monday morning, up to 5 cm of fresh snow anticipated above 2000 m. Temperatures will change little. Moderate-strength northerly winds.

Outlook

Little change. No firm, some breakable crusts, slight daytime cycle.

Translated by Jeffrey McCabe, www.creativtrans.com

Avalanche problems



Danger ratings



Expositions

