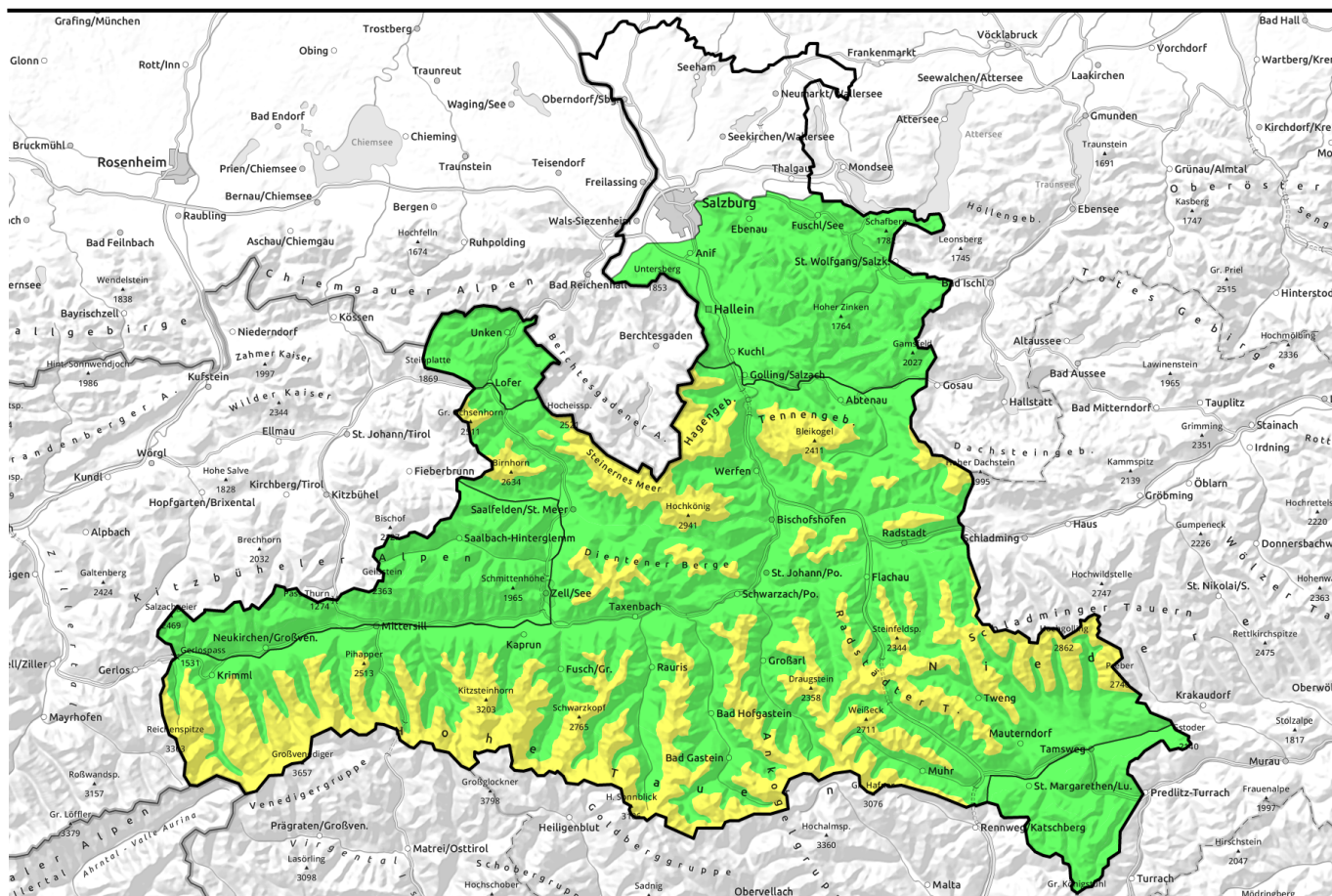


16.04.2021



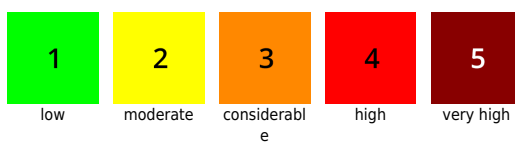
Favourable conditions. Careful tracking urged at high altitude

| | | |
|--|---|--|
| | Osterhorngruppe, Gamsfeldgruppe, Untersbergstock, Chiemgauer Alpen, Heutal, Reiteralpe, Kitzbüheler Alpen, Glemmtal, Oberpinzgauer Grasberge | |
| | Nockberge | |
| | 2000 m Loferer und Leoganger Steinberge, Steinernes Meer, Hochkönig, Hagengebirge, Göllstock, Tennengebirge, Gosaukamm, Pongauer Grasberge, Dientner Grasberge, Goldberggruppe Nord, Glocknergruppe Nord, Großvenedigergruppe Nord, Großvenedigergruppe Alpenhauptkamm, Niedere Tauern Alpenhauptkamm, Niedere Tauern Süd, Ankogelgruppe, Muhr, Goldberggruppe Alpenhauptkamm, Glocknergruppe Alpenhauptkamm | |

Avalanche problems



Danger ratings



Expositions



16.04.2021

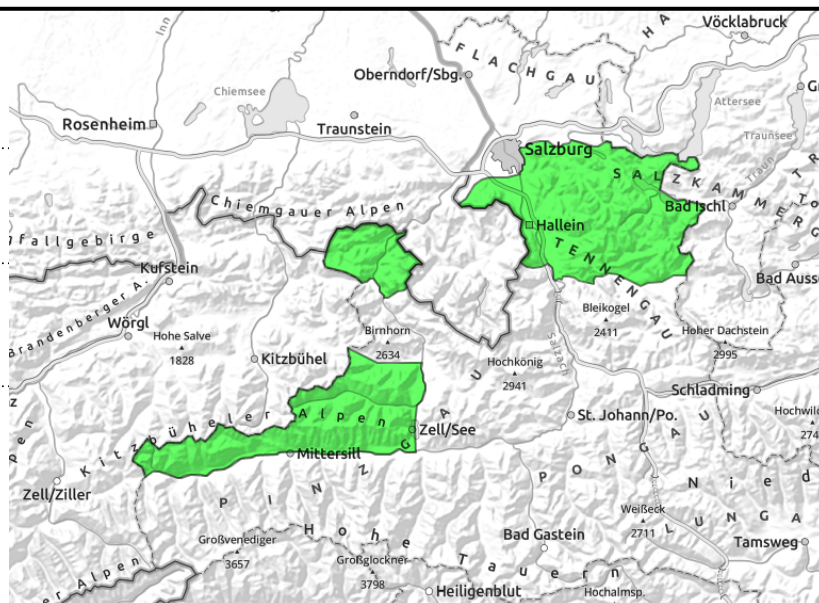
**Osterhorngruppe, Gamsfeldgruppe,
Untersbergstock, Chiemgauer Alpen, Heutal,
Reiteralpe, Kitzbüheler Alpen, Glemmtal,
Oberpinzgauer Grasberge**



near ridges, small-sized



dry naturally triggered
avalanches, mostly small,
isolated medium, in sunny
rocky terrain



Avalanche danger is LOW, few danger zones

Caution is necessary in extremely steep rocky terrain, where solar radiation can trigger small-to-medium loose-snow avalanches (or they trigger naturally) most likely at midday or in the afternoon. In a few spots in extremely steep ridgeline terrain, a small-to-medium dry slab can be triggered. The most likely danger point is in N-E-S aspects above 2000 m (large additional loading, few spots, triggerable in transitions from shallow to deeper snow).

Snowpack structure

The fresh snow from Tuesday and Wednesday (15-40 cm) has settled somewhat, due to diffuse radiation. Bonding to the compact old snowpack is good. Potential fracture points exist in isolated cases beneath the melt-freeze crust of the old snow, but the snow is not easily triggerable. Near ridges there are older drifts from Wednesday.

Weather

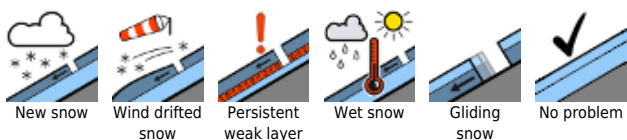
Following a night of partly clear skies, there will often be sunshine on **Friday**, a bit of residual fog will cling to the mountain flanks. In the afternoon, convective cloud build-up is anticipated, the peaks could become veiled. No tenacious fog, visibility will be variable, by evening clear skies are again expected. Powerful radiation, often diffuse. Little wind at high altitude blowing at 30 km/hr from the northwest. At 2000 m rising from -10 to -5 degrees.

On **Saturday**, initially sunny, later cloudy. No wind. Temperatures will remain unchanged.

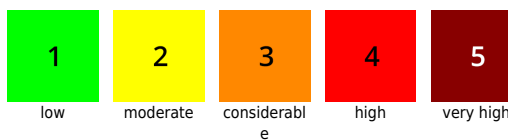
Outlook

Little change on the weekend. Favourable conditions, but no firm snow and very minor daytime cycle.

Avalanche problems



Danger ratings



Expositions

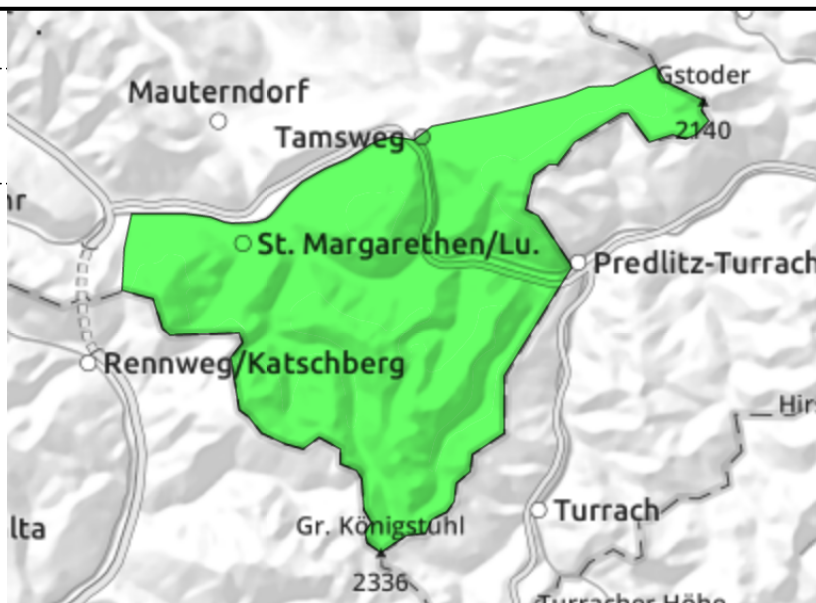


16.04.2021

Nockberge



near ridges, in gullies, steep bowls, small



Avalanche danger is LOW, hardly any avalanche prone locations

In very few spots in extremely steep ridgeline terrain a small to medium slab avalanche can be triggered. The most likely danger point is in N-E-S aspects above 2000 m (large additional loading, few spots, triggerable in transitions from shallow to deeper snow).

Snowpack structure

The fresh snow from Tuesday and Wednesday (10-20 cm) has settled somewhat, due to diffuse radiation. Bonding to the compact old snowpack is good. Potential fracture points exist in isolated cases beneath the melt-freeze crust of the old snow, but the snow is not easily triggerable. Near ridges there are older drifts from Wednesday.

Weather

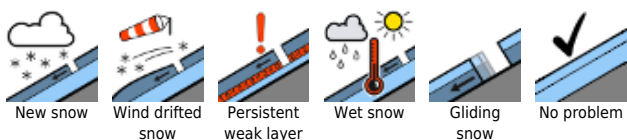
Following a night of partly clear skies, there will often be sunshine on **Friday**, a bit of residual fog will cling to the mountain flanks. In the afternoon, convective cloud build-up is anticipated, the peaks could become veiled. No tenacious fog, visibility will be variable, by evening clear skies are again expected. Powerful radiation, often diffuse. Little wind at high altitude blowing at 30 km/hr from the northwest. At 2000 m rising from -9 to -4 degrees.

On **Saturday**, initially sunny, later cloudy. No wind. Temperatures will remain unchanged.

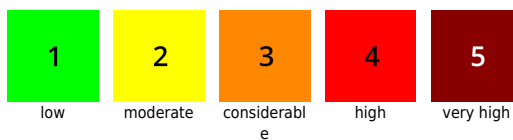
Outlook

Little change on the weekend. Favourable conditions, but no firn snow and very minor daytime cycle.

Avalanche problems



Danger ratings

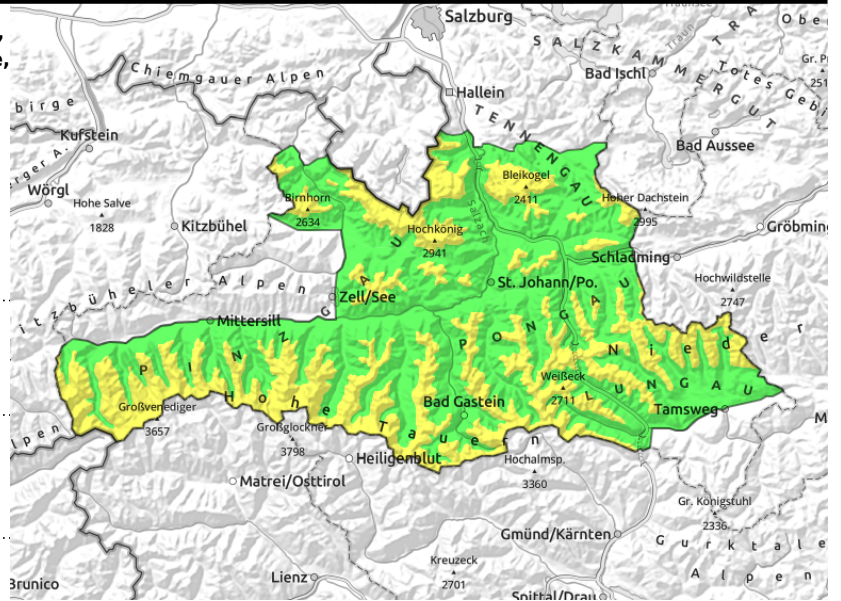


Expositions



16.04.2021

Loferer und Leoganger Steinberge, Steinernes Meer, Hochkönig, Hagengebirge, Göllstock, Tennengebirge, Gosaukamm, Pongauer Grasberge, Dientner Grasberge, Goldberggruppe Nord, Glocknergruppe Nord, Großvenedigergruppe Alpenhauptkamm, Niedere Tauern Nord, Niedere Tauern Alpenhauptkamm, Niedere Tauern Süd, Ankogelgruppe, Muhr, Goldberggruppe Alpenhauptkamm, Glocknergruppe Alpenhauptkamm



2000 m



near ridges, in gullies, steep bowls, large additional loading



dry naturally triggered avalanches, small-to-medium, isolated large, in rocky sunny terrain, isolated gliding snow

Caution required above 2000 m

Naturally triggered sunny-slope avalanches: caution urged on extremely steep and rocky terrain, where small-to-medium dry loose-snow avalanches can trigger. Also isolated naturally triggered wet slabs are possible in extremely steep terrain; also glide-snow avalanches. Such releases could grow to large size. Likelihood of unleashing is greatest at midday and in the afternoon.

Artificial triggering: in isolated spots in very steep and ridgeline terrain, a medium-to-large dry slab can be triggered. Danger spots are most likely in N-E-SW aspects above 2000 m. Mostly large additional loading is necessary, i.e. no distances, a fall, going on foot. The rims of snowdrift accumulations are most treacherous, where the snow becomes shallower.

Snowpack structure

The fresh snow from Tuesday and Wednesday (30-80 cm on Main Alpine Ridge and in Hohe Tauern) has settled somewhat, due to diffuse radiation. Potential fracture points exist in isolated cases beneath the melt-freeze crust of the old snow. Due to brisk to stormy NW winds on Wednesday, there are often wide-ranging older snowdrifts which have consolidated somewhat.

Weather

Following a night of partly clear skies, there will often be sunshine on **Friday**, a bit of residual fog will cling to the mountain flanks. In the afternoon, convective cloud build-up is anticipated, the peaks could become veiled. No tenacious fog, visibility will be variable, by evening clear skies are again expected. Powerful radiation, often diffuse. Little wind at high altitude blowing at 30 km/hr from the northwest. At 2000 m rising from -10 to -5 degrees, at 3000 m -13 degrees.

On **Saturday**, initially sunny, later cloudy. No wind. Temperatures will remain unchanged.

Outlook

Little change on the weekend. Favourable conditions, but no firm snow and very minor daytime cycle.

Translated by Jeffrey McCabe, www.creativtrans.com

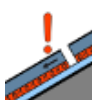
Avalanche problems



New snow



Wind drifted snow



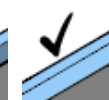
Persistent weak layer



Wet snow



Gliding snow



No problem

Danger ratings



1

low



2

moderate



3

considerable



4

high



5

very high

Expositions

