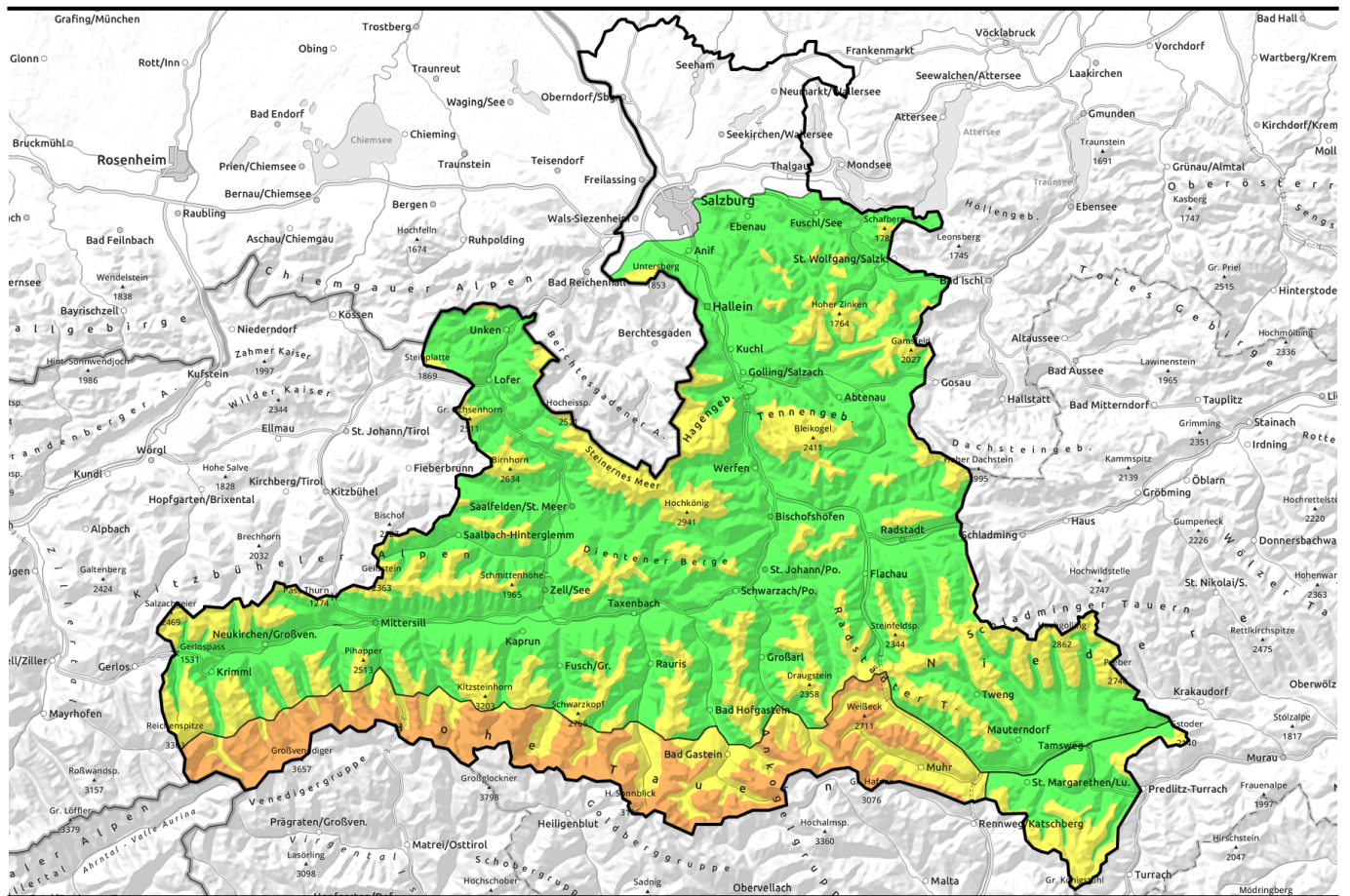


15.04.2021



Amounts of fresh snow rapidly increase with ascending altitude



forestline

Osterhorngruppe, Gamsfeldgruppe, Untersbergstock, Chiemgauer Alpen, Heutal, Reiteralpe, Loferer und Leoganger Steinberge, Steinernes Meer, Hochkönig, Hagengebirge, Göllstock, Tennengebirge, Gosaukamm, Kitzbüheler Alpen, Glemmtal, Oberpinzgauer Grasberge, Großvenedigergruppe Nord, Glocknergruppe Nord, Dientner Grasberge, Goldberggruppe Nord, Pongauer Grasberge, Niedere Tauern Nord, Niedere Tauern Alpenhauptkamm, Niedere Tauern Süd



2300 m

Großvenedigergruppe Alpenhauptkamm, Glocknergruppe Alpenhauptkamm, Goldberggruppe Alpenhauptkamm, Ankogelgruppe, Muhr

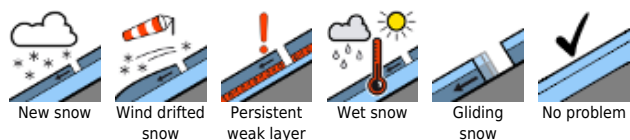


forestline

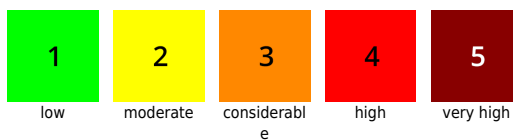
Nockberge



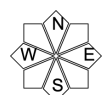
Avalanche problems



Danger ratings

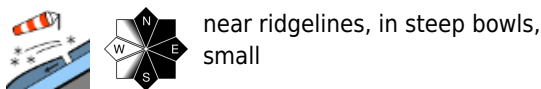
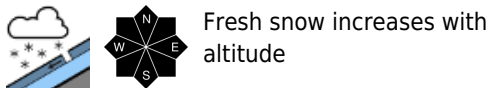
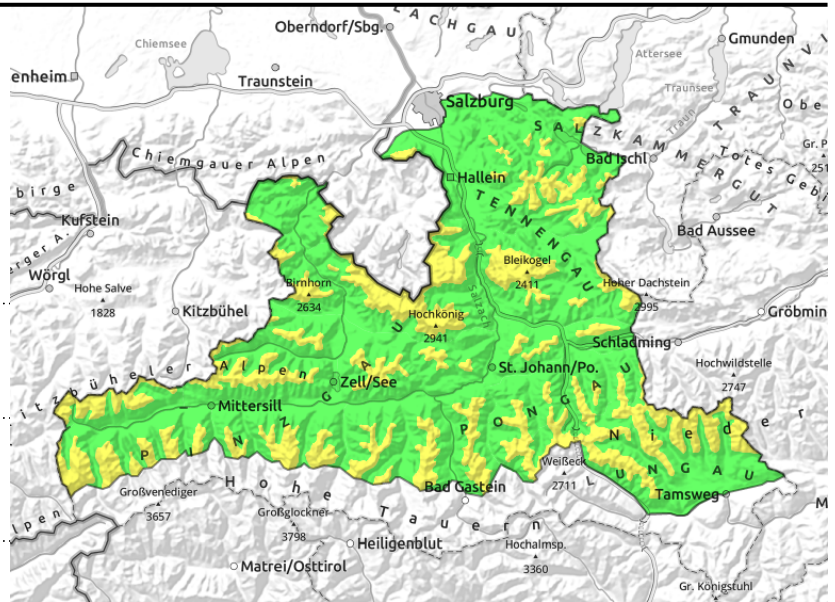


Expositions



15.04.2021

Osterhorngruppe, Gamsfeldgruppe, Untersbergstock, Chiemgauer Alpen, Heutal, Reiteralpe, Loferer und Leoganger Steinberge, Steinernes Meer, Hochkönig, Hagengebirge, Göllstock, Tennengebirge, Gosaukamm, Kitzbüheler Alpen, Glemmtal, Oberpinzgauer Grasberge, Großvenedigergruppe Nord, Glocknergruppe Nord, Dientner Grasberge, Goldberggruppe Nord, Pongauer Grasberge, Niedere Tauern Nord, Niedere Tauern Alpenhauptkamm, Niedere Tauern Süd



Loose-snow avalanches, ridgeline snowdrifts

Avalanche danger above the treeline is MODERATE, below that altitude danger is LOW.

In extremely steep rocky terrain, especially during sunny weather. small-to-medium loose-snow avalanches can trigger. Small loose-snow avalanches can be triggered in very-steep to extremely-steep terrain even by winter sports enthusiasts.

Snowdrifts occur primarily near ridgelines in steep N-E-S aspects and in wind-loaded gullies.

Frequency of danger zones increases with ascending altitude. For triggering a small-to-medium slab avalanche, large additional loading is generally necessary, or else it occurs in extremely steep terrain. Avalanches and the snow masses which are swept along generally come to a stop rather quickly.

Snowpack structure

Atop a well settled and compact old snowpack surface 15-40 cm of loosely-packed fresh snow has been registered. Particularly at high altitudes, NW winds have generated fresh small snowdrifts.

Weather

Fog and convective clouds disperse continually and let a bit of sunshine through. Brief minor snow showers continue. The NW winds are blowing on high plateaus, summits and ridges often at moderate strength, particularly where there are showers. At 1500 m, -6 to -3 degrees; at 2000 m, -9 degrees.

Outlook

Little change.

Avalanche problems



Danger ratings



Expositions



15.04.2021

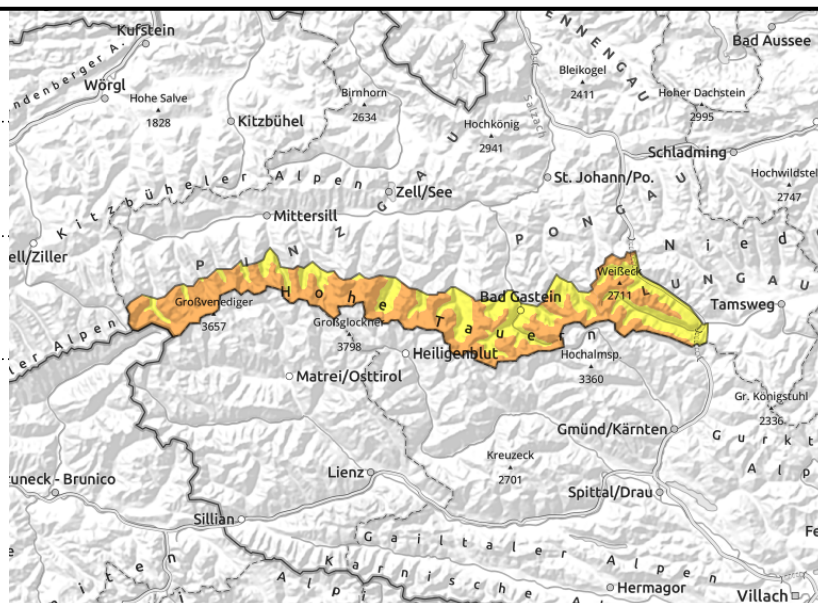
Großvenedigergruppe Alpenhauptkamm, Glocknergruppe Alpenhauptkamm, Goldberggruppe Alpenhauptkamm, Ankogelgruppe, Muhr



Fresh snow increases with altitude



near ridgelines, in steep bowls



Loose-snow avalanches, slab avalanches

Avalanche danger above 2300 m is CONSIDERABLE, below that altitude danger is MODERATE.

In extremely steep rocky terrain, especially during sunny weather, small-to-medium loose-snow avalanches can trigger. Small loose-snow avalanches can be triggered in very-steep to extremely-steep terrain even by winter sports enthusiasts.

Small-to-medium slab avalanches can trigger in steep E-S aspects even by minimum additional loading. Most danger zones occur near ridgelines and in wind-loaded gullies. Frequency of avalanche prone locations increases with ascending altitude.

Snowpack structure

Atop a well settled and compact old snowpack surface 40-90 cm of loosely-packed fresh snow has been registered. Particularly at high altitudes, NW winds have generated fresh small snowdrifts. Slab avalanches generally fracture inside the fresh snow.

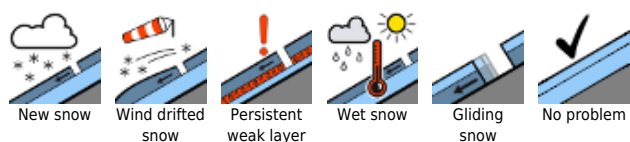
Weather

Fog and convective clouds disperse continually and let a bit of sunshine through. Brief minor snow showers continue. The NW winds are blowing on high plateaus, summits and ridges often at moderate strength, particularly where there are showers. At 2000 m, -10 to -6 to degrees; at 3000 m, -15 degrees.

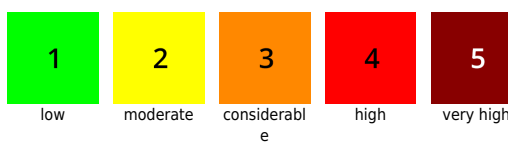
Outlook

Avalanche danger will recede.

Avalanche problems



Danger ratings

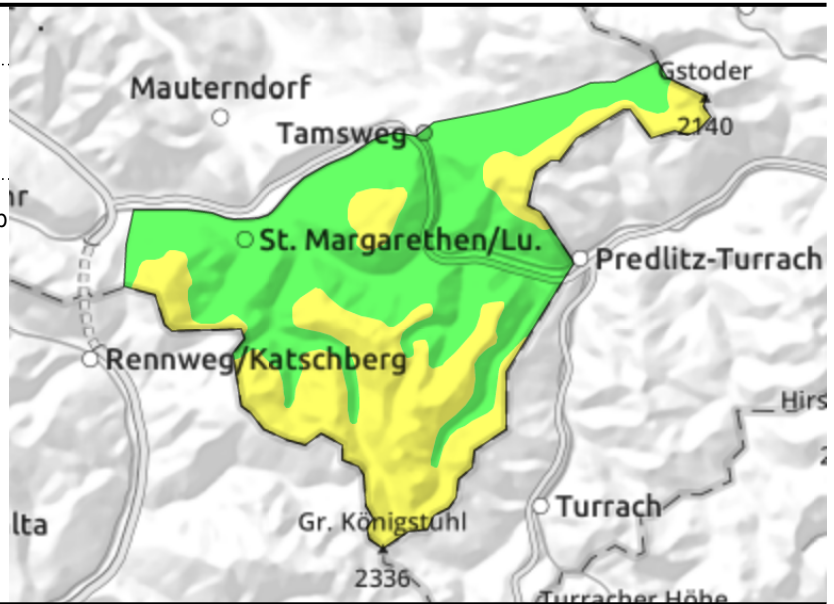
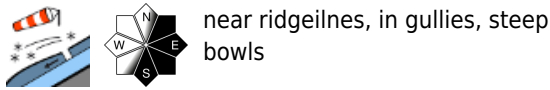


Expositions



15.04.2021

Nockberge



Caution: snowdrifts

Avalanche danger above the treeline is MODERATE, below that altitude LOW. Snowdrifts can trigger as a small-to-medium slab avalanche primarily in E-S steep terrain and in wind-loaded gullies. Generally, large additional loading (or extremely steep terrain) is necessary.

Snowpack structure

Atop a compact old snowpack surface, 10-25 cm of fresh snow has been registered, most of which was transported by strong NW winds, generating new snowdrift accumulations.

Weather

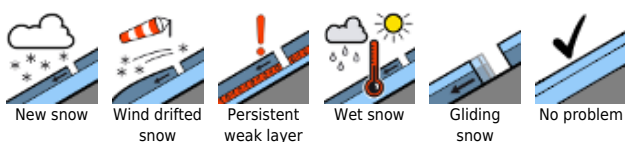
Visibility is generally good, intermittent sunshine is expected. The NW winds will be blowing at moderate strength. At 2000 m: -10 to -6 degrees.

Outlook

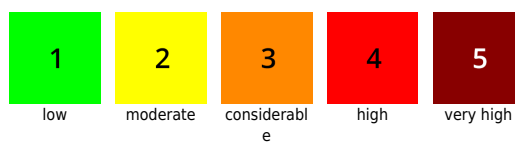
Little change.

Translated by Jeffrey McCabe, www.creativtrans.com

Avalanche problems



Danger ratings



Expositions

