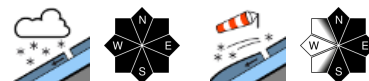


Wintery conditions, 50 cm of fresh powder in some places



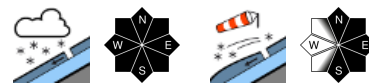
forestline

Osterhorngruppe, Gamsfeldgruppe, Untersbergstock, Chiemgauer Alpen, Heutal, Reiteralpe, Loferer und Leoganger Steinberge, Kitzbüheler Alpen, Glemmtal, Oberpinzgauer Grasberge, Steinernes Meer, Hochkönig, Hagengebirge, Göllstock, Dientner Grasberge, Tennengebirge, Gosaukamm, Pongauer Grasberge, Niedere Tauern Nord, Großvenedigergruppe Nord, Goldberggruppe Nord



2000 m

Glocknergruppe Nord, Großvenedigergruppe Alpenhauptkamm, Glocknergruppe Alpenhauptkamm, Goldberggruppe Alpenhauptkamm, Niedere Tauern Alpenhauptkamm, Ankogelgruppe, Muhr, Niedere Tauern Süd

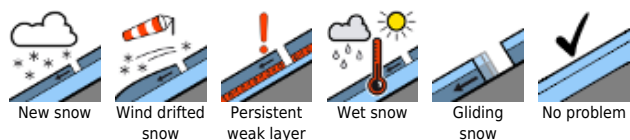


forestline

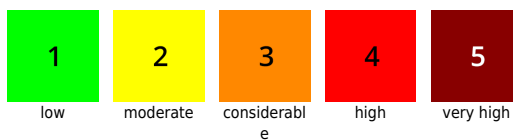
Nockberge



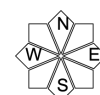
Avalanche problems



Danger ratings

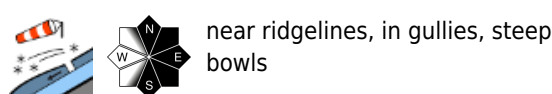
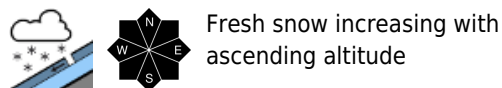
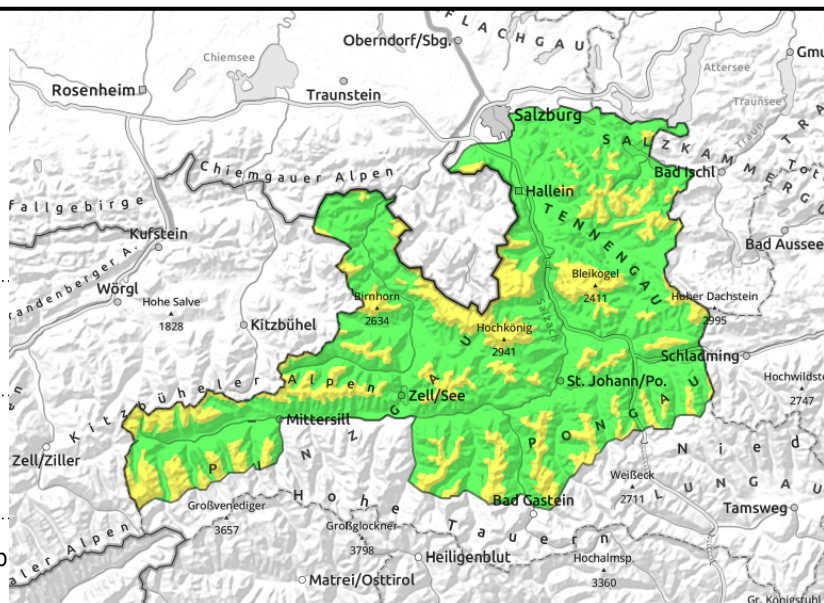


Expositions



14.04.2021

Osterhorngruppe, Gamsfeldgruppe, Untersbergstock, Chiemgauer Alpen, Heutal, Reiteralpe, Loferer und Leoganger Steinberge, Kitzbüheler Alpen, Glemmtal, Oberpinzgauer Grasberge, Steinernes Meer, Hochkönig, Hagengebirge, Göllstock, Dientner Grasberge, Tennengebirge, Gosaukamm, Pongauer Grasberge, Niedere Tauern Nord, Großvenedigergruppe Nord, Goldberggruppe Nord



Loose-snow avalanches and ridgeline snowdrifts

Avalanche danger above the timberline is MODERATE, below that altitude LOW. In extremely steep rocky terrain, particularly on sunny slopes (where even in April the diffuse radiation is intense in April) small-to-medium loose-snow avalanches can trigger. Snowdrifts occur primarily in steep ridgeline terrain in N-E-S aspects and in wind-loaded gullies. Frequency of danger zones increases with ascending altitude. Ordinarily, large additional loading is necessary to trigger a small-to-medium slab avalanche, or else in extremely steep terrain.

Snowpack structure

Atop a well settled and compact old snowpack, 10-30 cm of loosely-packed fresh snow has been deposited. In high altitude terrain the NW winds have generated new snowdrifts.

Weather

Fog and convective cloud often open and let some sunshine through. Isolated minor snow showers are possible but will be the exception. Winds will be moderate from the northwest. At 1500 m, -7 to -3 degrees; at 2000 m, -9 degrees.

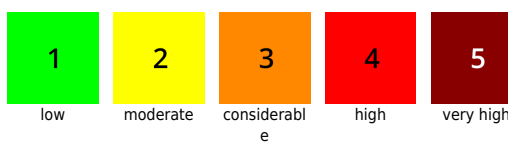
Outlook

The process of the snowpack settling progresses apace. Avalanche danger will gradually recede.

Avalanche problems



Danger ratings




Expositions

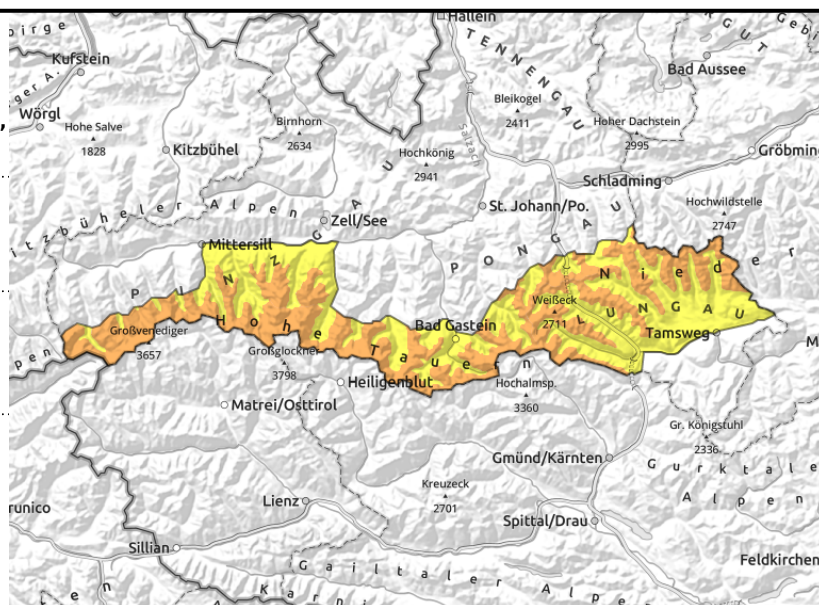
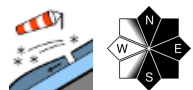


14.04.2021

**Glocknergruppe Nord, Großvenedigergruppe
Alpenhauptkamm, Glocknergruppe
Alpenhauptkamm, Goldberggruppe
Alpenhauptkamm, Niedere Tauern Alpenhauptkamm,
Ankogelgruppe, Muhr, Niedere Tauern Süd**



 Fresh snow increasing with ascending altitude



Avalanche danger is **CONSIDERABLE** above 2000 m, **MODERATE** below that altitude. Loose-snow avalanches (isolated large-sized ones) can be triggered especially in sunshine (diffuse radiation is intensive in April) in extremely steep rocky terrain. Small-to-medium (in isolated cases large-sized) slab avalanches can trigger primarily in N-E-S aspects by minimum additional loading. Most of the avalanche prone locations occur near ridgelines and in wind-loaded gullies. Frequency of danger zones increases with ascending altitude.

Snowpack structure

Atop a generally compact and well-settled old snowpack, 30-50 cm of fresh snow has been deposited. This was transported by brisk-to-stormy NW winds and generated new bonded snowdrifts. Slabs fracture either at the border to the old snowpack crust or inside the fresh snow.

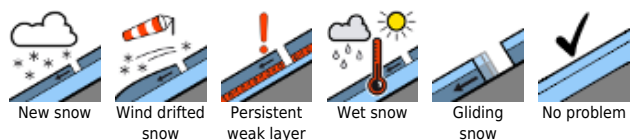
Weather

Fog and convective cloud often open and let some sunshine through. Isolated minor snow showers are possible but will be the exception. Winds will be moderate from the northwest. At 2000 m, -8 degrees. at 3000 m, 16 degrees.

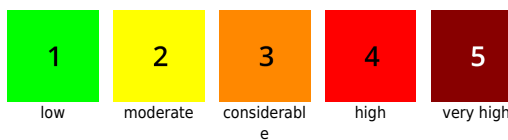
Outlook

The process of the snowpack settling progresses apace. Avalanche danger will gradually recede.

Avalanche problems



Danger ratings

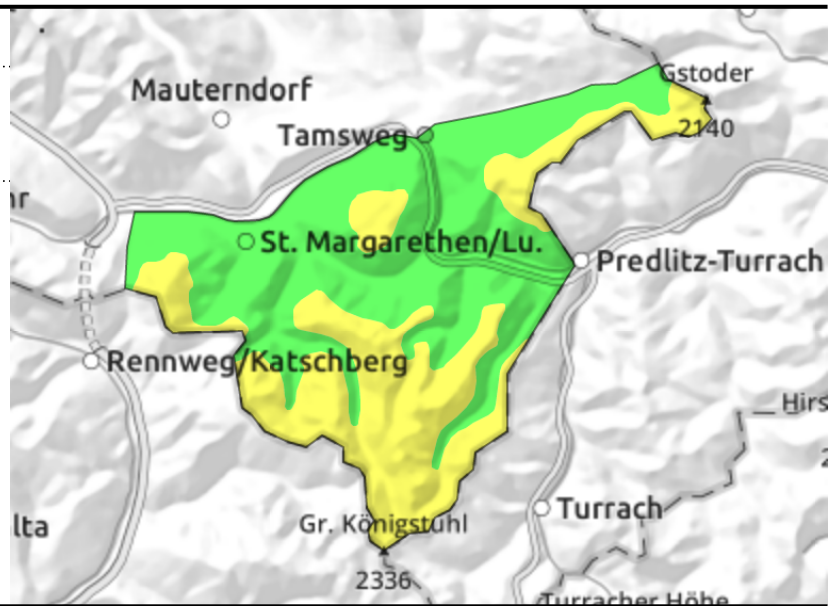
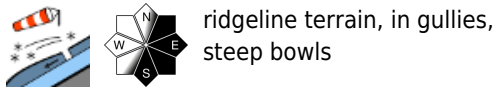


Expositions



14.04.2021

Nockberge



Caution: fresh snowdrifts

Avalanche danger above the timberline is MODERATE, below that altitude LOW. Fresh snowdrifts can trigger a small-to-medium slab in E-S facing steep terrain and in wind-loaded gullies. Most often, large additional loading is necessary, or else in extremely steep terrain.

Snowpack structure

Atop a well settled and compact old snowpack, 10-25 cm of loosely-packed fresh snow has been deposited. In high altitude terrain the NW winds have generated new snowdrifts.

Weather

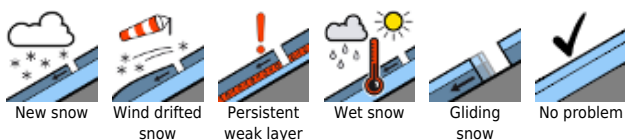
The strong NW winds will slacken off significantly during the course of the day. Visibility is generally adequate, intermittent sunshine is expected. At 2000 m, -8 degrees.

Outlook

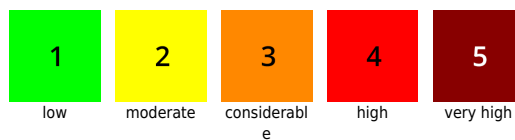
Avalanche danger will gradually recede.

Translated by Jeffrey McCabe, www.creativtrans.com

Avalanche problems



Danger ratings



Expositions

