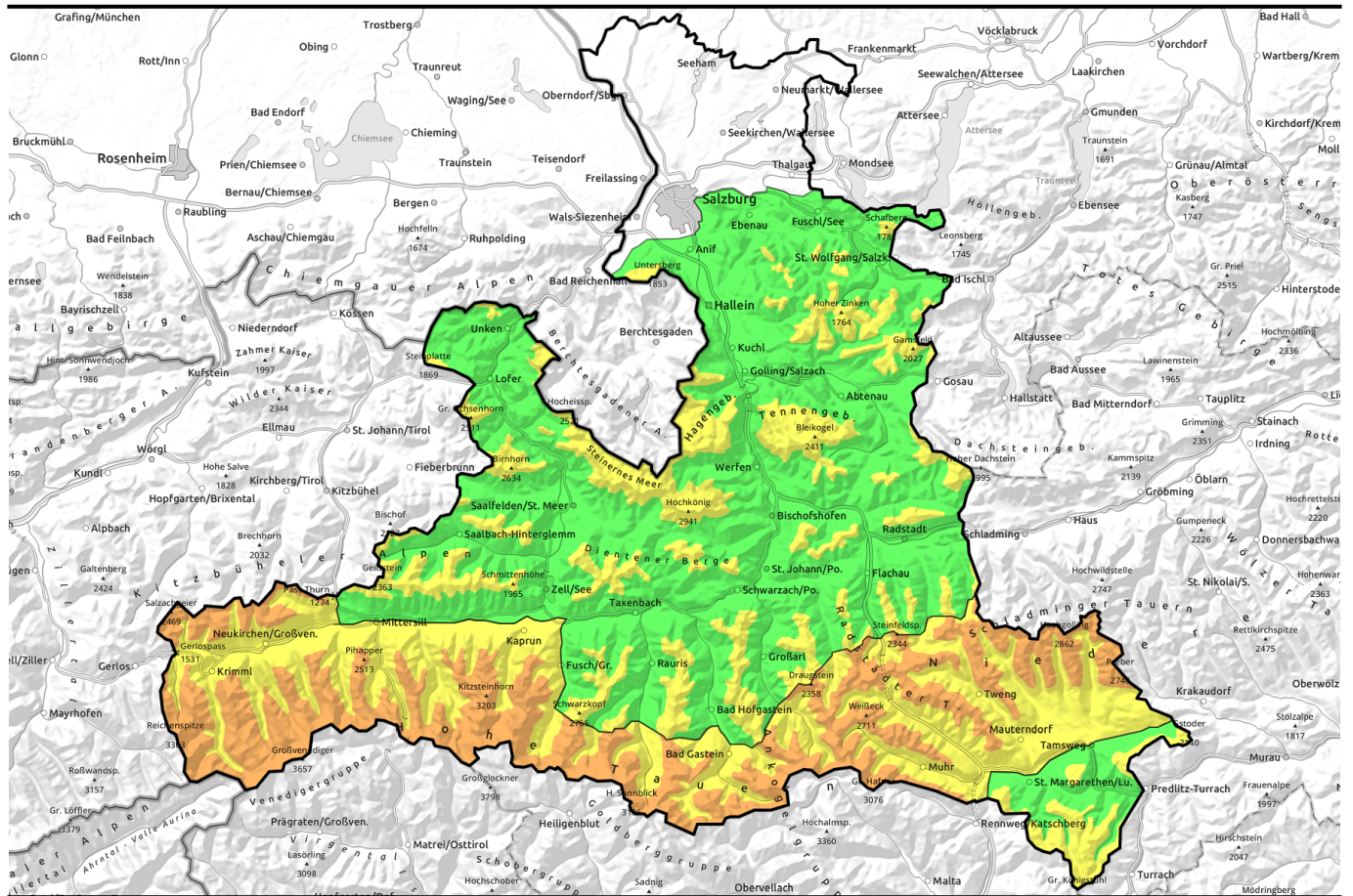


13.04.2021



Caution: fresh ridgeline snowdrifts



forestline

Untersbergstock, Osterhorngruppe, Gamsfeldgruppe, Tennengebirge, Gosaukamm, Steinernes Meer, Hochkönig, Hagengebirge, Göllstock, Chiemgauer Alpen, Heutal, Reiteralpe, Loferer und Leoganger Steinberge, Kitzbüheler Alpen, Glemmtal, Dientner Grasberge, Pongauer Grasberge, Nockberge, Niedere Tauern Nord, Goldberggruppe Nord

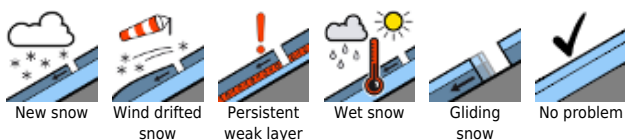


2000 m

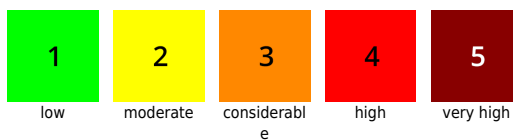
Oberpinzgauer Grasberge, Großvenedigergruppe Nord, Großvenedigergruppe Alpenhauptkamm, Glocknergruppe Nord, Glocknergruppe Alpenhauptkamm, Goldberggruppe Alpenhauptkamm, Niedere Tauern Alpenhauptkamm, Niedere Tauern Süd, Ankogelgruppe, Muhr



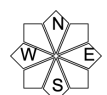
Avalanche problems



Danger ratings

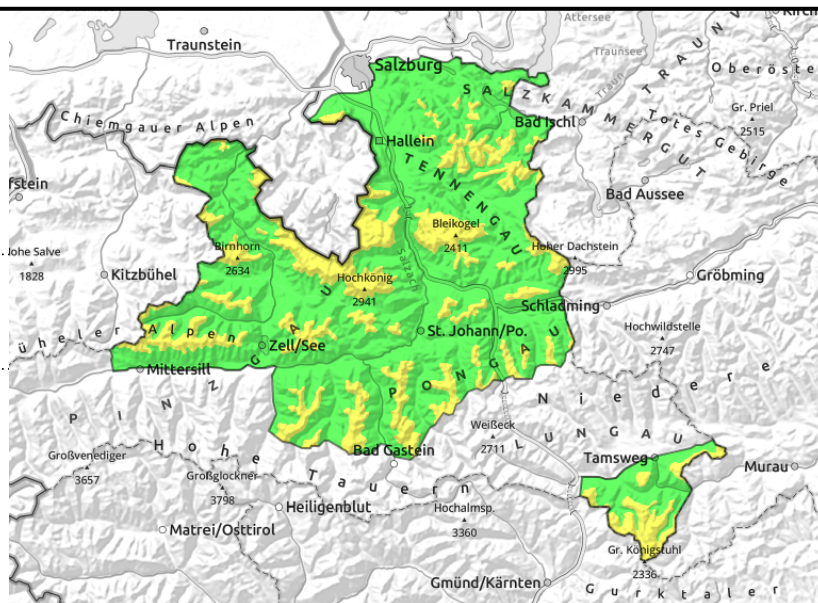
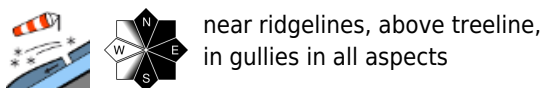


Expositions



13.04.2021

Untersbergstock, Osterhorngruppe, Gamsfeldgruppe, Tennengebirge, Gosaukamm, Steinernes Meer, Hochkönig, Hagengebirge, Göllstock, Chiemgauer Alpen, Heutal, Reiteralpe, Loferer und Leoganger Steinberge, Kitzbüheler Alpen, Glemmtal, Dientner Grasberge, Pongauer Grasberge, Nockberge, Niedere Tauern Nord, Goldberggruppe Nord



Fresh snowdrift above treeline

Avalanche danger above the treeline is MODERATE, below that altitude LOW. Main problem: fresh snowdrifts which have been generated near ridgelines behind protruberances. This applies particularly to east-facing steep terrain and wind-loaded gullies. A small-to-medium slab can be triggered by large additional loading, in extremely steep terrain often by minimum additional loading. Avalanche prone locations are easily recognized, visibility permitting. The frequency of danger zones increases with ascending altitude. In wind-protected zones there is powder snow atop a hardened base.

Snowpack structure

Atop a well-settled snow base there is 10-30 cm of fresh powder snow deposited. This is generally well bonded with the old snowpack, but bonding deteriorates with ascending altitude. Brisk NW winds are transporting the snow near ridgelines.

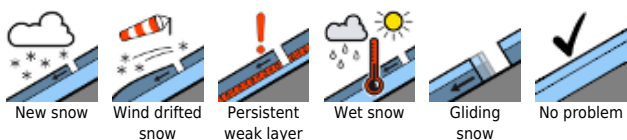
Weather

Visibility is often limited due to clouds and fog. Intermittent snowfall continues. Most of the fresh snow is being deposited on Monday night. The NW winds are brisk. At 1500 m: -5 degrees; at 2000 m: -10 degrees.

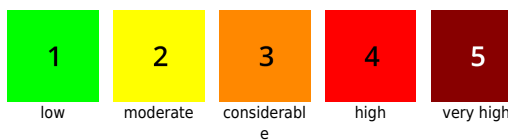
Outlook

Little change

Avalanche problems



Danger ratings




Expositions




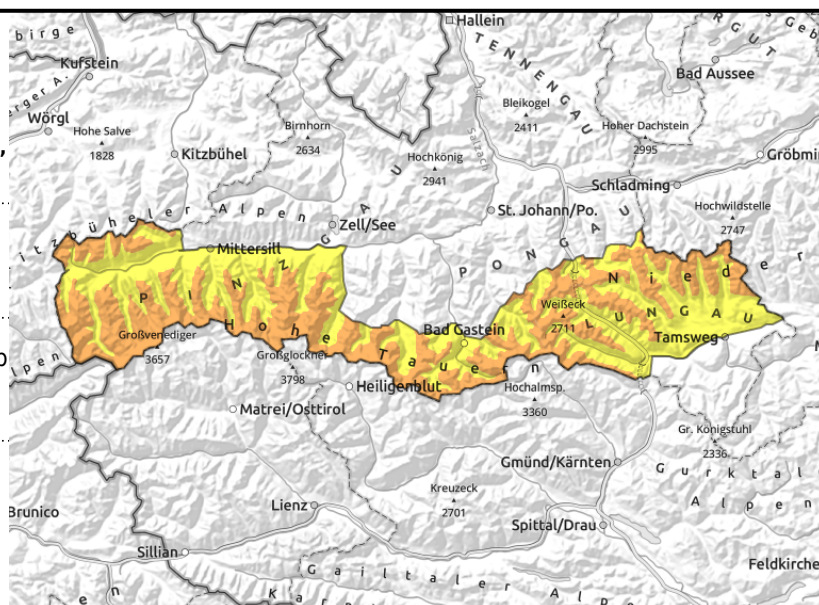
13.04.2021

Oberpinzgauer Grasberge, Großvenedigergruppe Nord, Großvenedigergruppe Alpenhauptkamm, Glocknergruppe Nord, Glocknergruppe Alpenhauptkamm, Goldberggruppe Alpenhauptkamm, Niedere Tauern Alpenhauptkamm, Niedere Tauern Süd, Ankogelgruppe, Muhr



 near ridgelines, in gullies, steep bowls

 fresh snow rapidly increasing with ascending altitude



Lots of fresh snow and wind

Avalanche danger above 2000 m is CONSIDERABLE, below that altitude MODERATE. Slab avalanches and loose-snow avalanches can grow to large size at high and high-alpine altitude. A slab on E-S facing slopes can often be triggered by minimum additional loading. In very-steep to extremely-steep terrain, isolated loose-snow avalanches can trigger naturally.

Snowpack structure

Atop a generally well settled and compact old snowpack, 30-50 cm of fresh snow lies deposited. The NW winds are generating fresh snowdrifts. With ascending altitude the bonding of fresh snow and drifts to the old snowpack deteriorates.

Weather

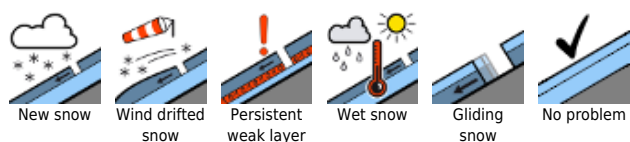
On Tuesday, visibility will be limited by clouds and fog. Intermittent snowfall will continue. Most of the snow will fall on Monday night. Winds will often be stormy from the northwest. Cold: at 2000 m, -9 degrees; at 3000 m, -15 degrees.

Outlook

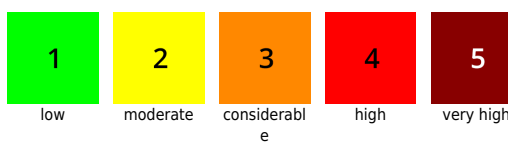
Avalanche danger will slowly recede.

Translated by Jeffrey McCabe, www.creativtrans.com

Avalanche problems



Danger ratings



Expositions

