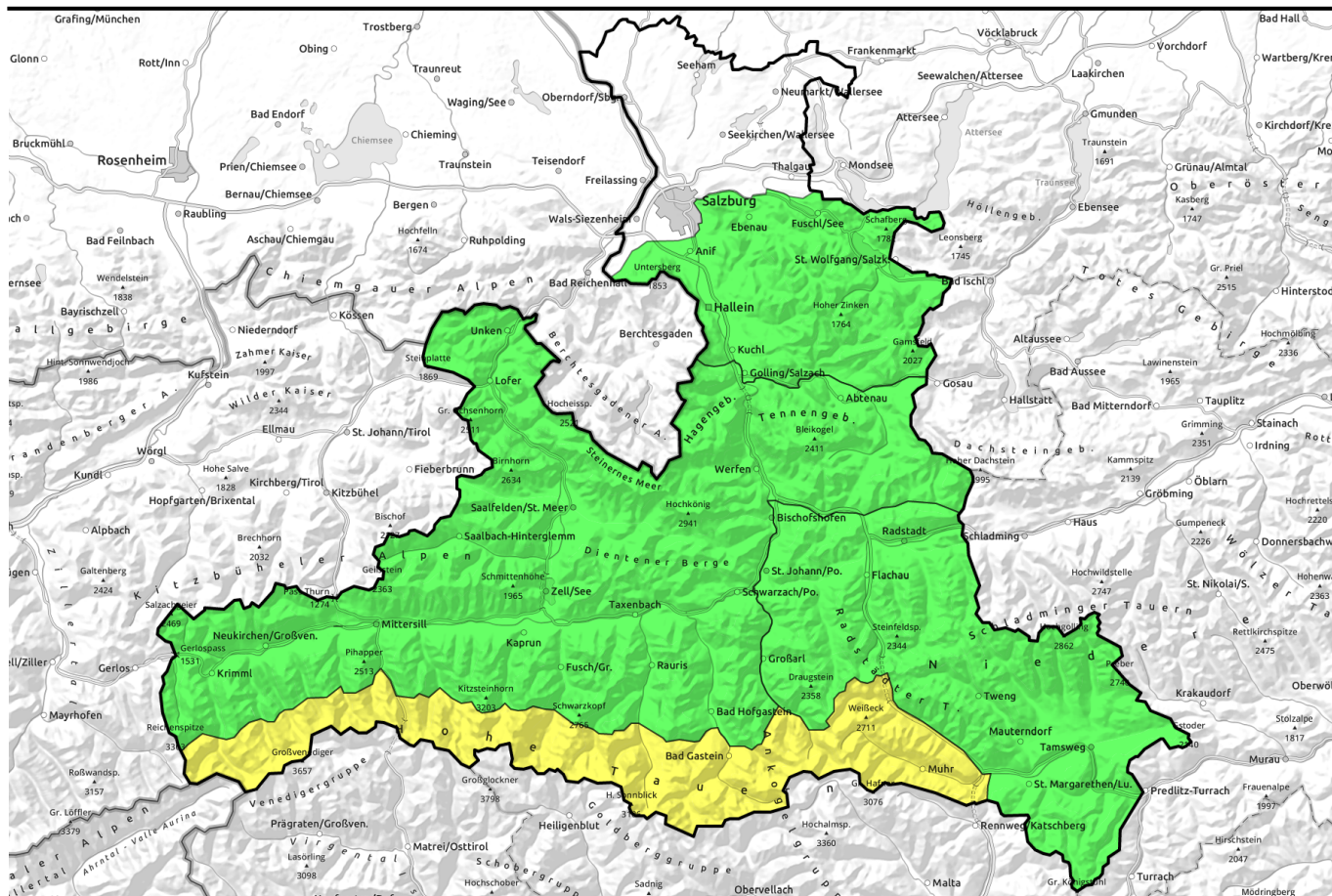


12.04.2021, morning



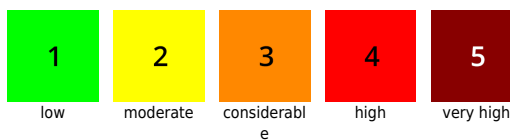
Onset of winter

	Osterhorngruppe, Gamsfeldgruppe, Untersbergstock		
	Chiemgauer Alpen, Heutal, Reiteralpe, Loferer und Leoganger Steinberge, Steinernes Meer, Hochkönig, Hagengebirge, Göllstock, Tennengebirge, Gosaukamm, Dientner Grasberge, Kitzbüheler Alpen, Glemmtal, Oberpinzgauer Grasberge, Großvenedigergruppe Nord, Glocknergruppe Nord, Goldberggruppe Nord		
	Pongauer Grasberge, Niedere Tauern Nord, Niedere Tauern Alpenhauptkamm, Niedere Tauern Süd, Nockberge		
	Großvenedigergruppe Alpenhauptkamm, Glocknergruppe Alpenhauptkamm, Goldberggruppe Alpenhauptkamm, Ankogelgruppe, Muhr		

Avalanche problems



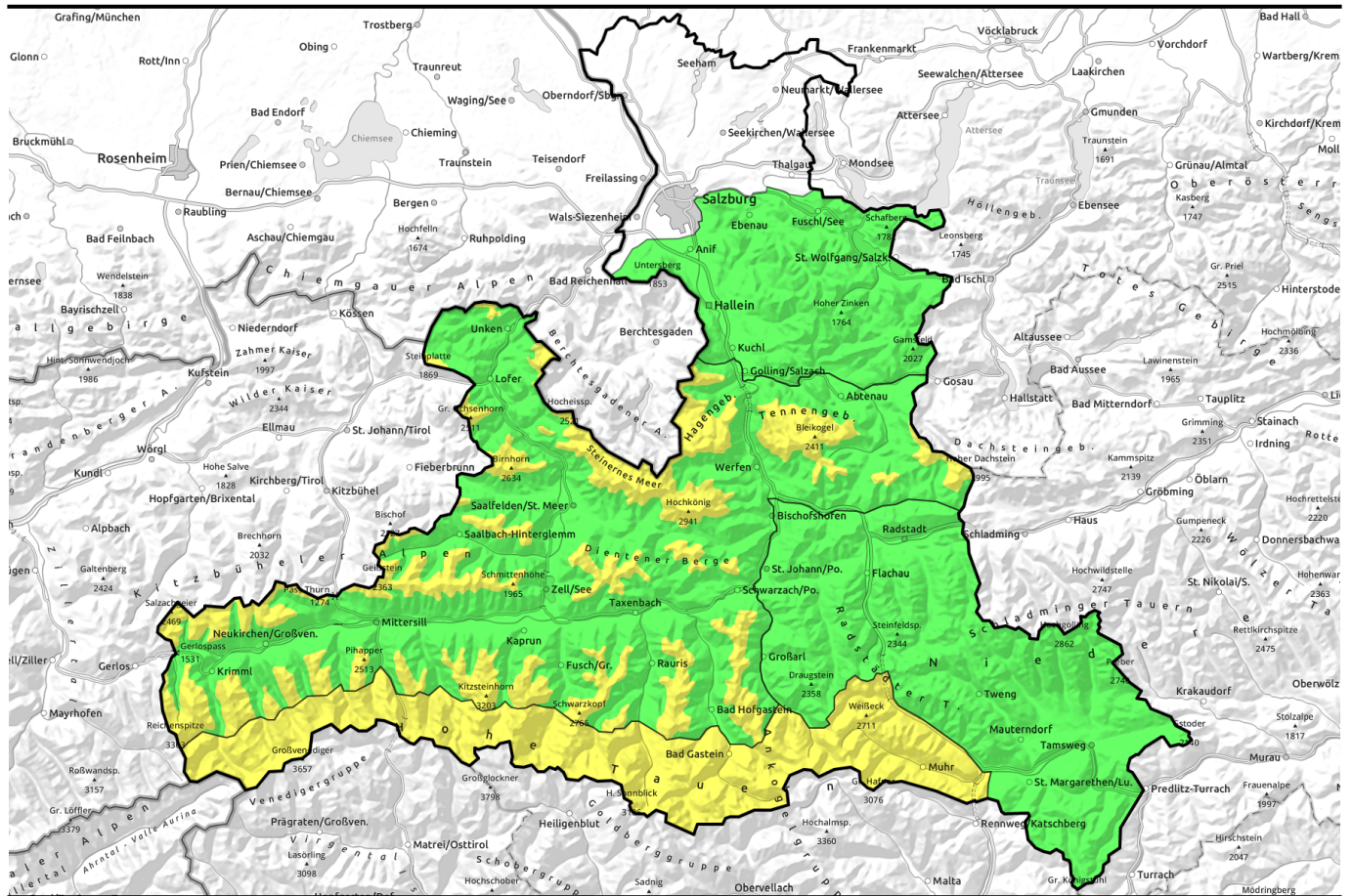
Danger ratings



Expositions



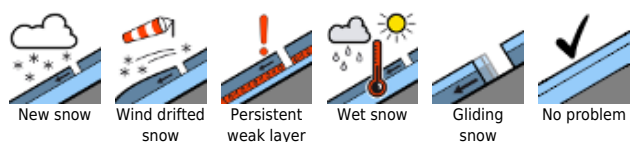
12.04.2021, afternoon



Neuerlicher Wintereinbruch

	<p>Osterhorngruppe, Gamsfeldgruppe, Untersbergstock</p>		
<p>1800 m</p>	<p>Chiemgauer Alpen, Heutal, Reiteralpe, Loferer und Leoganger Steinberge, Steinernes Meer, Hochkönig, Hagengebirge, Göllstock, Tennengebirge, Gosaukamm, Dientner Grasberge, Kitzbüheler Alpen, Glemmtal, Oberpinzgauer Grasberge, Großvenedigergruppe Nord, Glocknergruppe Nord, Goldberggruppe Nord</p>		
	<p>Pongauer Grasberge, Niedere Tauern Nord, Niedere Tauern Alpenhauptkamm, Niedere Tauern Süd, Nockberge</p>		
	<p>Großvenedigergruppe Alpenhauptkamm, Glocknergruppe Alpenhauptkamm, Goldberggruppe Alpenhauptkamm, Ankogelgruppe, Muhr</p>		

Avalanche problems



Danger ratings

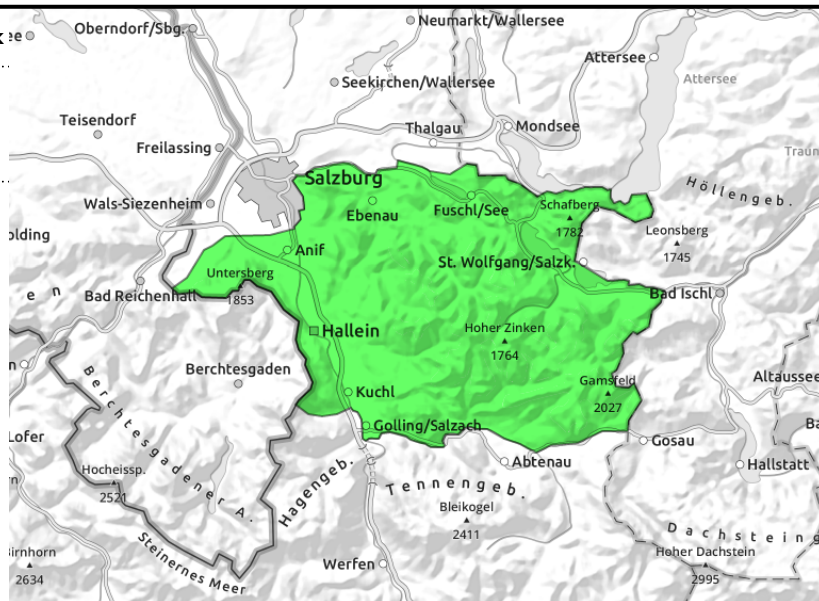
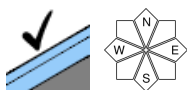


Expositions



12.04.2021

Osterhorngruppe, Gamsfeldgruppe, Untersbergstock



Cooling temperatures during the day, a few centimetres of fresh snow

Favourable avalanche situation. Danger zones are isolated. In the morning, small wet-snow or glide-snow avalanches are possible. In the afternoon, isolated snowdrift accumulations will be generated near ridges.

Snowpack structure

Well settled, compact snowpack

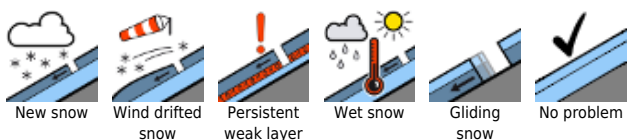
Weather

On Monday, a bit of sunshine only in early morning. At 1500 m, +4 degrees. Quickly a brisk westerly wind will spread heavy clouds, shroud the peaks in fog. Isolated rain showers are possible in the morning, these will rapidly turn to snowfall as the temperatures descend 5-10 degrees. In the afternoon, intermittent snowfall, bringing 3-10 cm of fresh snow.

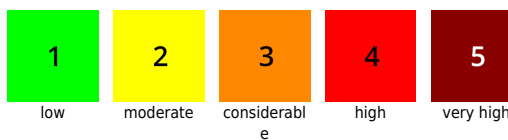
Outlook

As a result of fresh snow and wind, avalanche danger will increase. Snowdrift problem

Avalanche problems



Danger ratings

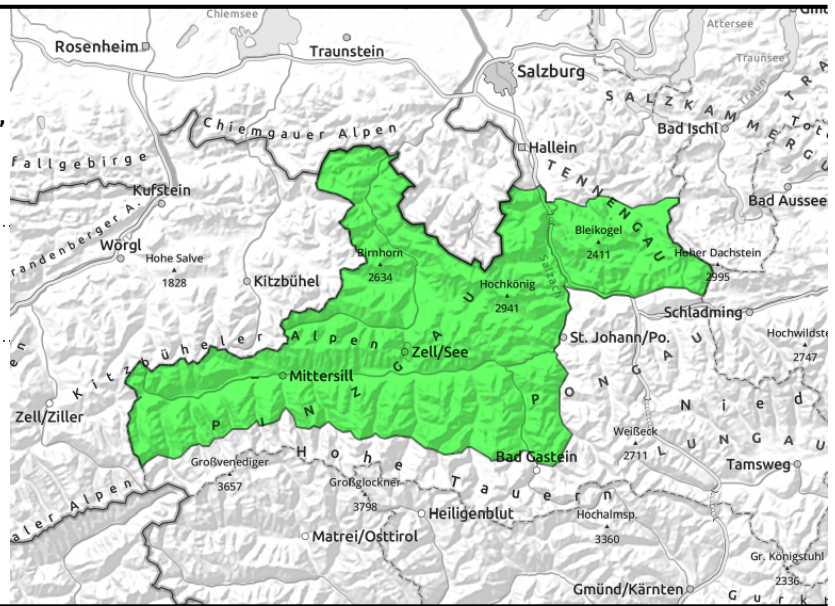


Expositions



12.04.2021, morning

Chiemgauer Alpen, Heutal, Reiteralpe, Loferer und Leoganger Steinberge, Steinernes Meer, Hochkönig, Hagengebirge, Göllstock, Tennengebirge, Gosaukamm, Dientner Grasberge, Kitzbüheler Alpen, Glemmtal, Oberpinzgauer Grasberge, Großvenedigergruppe Nord, Glocknergruppe Nord, Goldberggruppe Nord



frequency of danger zones increasing during daytime, ridgeline zones, gullies, bowls

Frequency of avalanche prone locations is expected to increase during the course of the day.

In the morning, LOW avalanche danger. Isolated small wet-snow or glide-snow avalanches. At high altitudes on north-facing slopes, a minor snowdrift problem.

In the afternoon, avalanche danger above 1800 m will rise to MODERATE. Fresh snow and winds will generate new snowdrift accumulations, deposit them near ridgelines in N-E-S aspects and in wind-loaded gullies. These can be triggered as a thin slab or snowdrift patch.

Snowpack structure

The snowpack has settled well, is compact, often melt-freeze encrusted. Atop this base, 5-10 cm of fresh snow will be deposited during the course of the day accompanied by much wind impact. Fresh snow and drifts will generally bond well with the old snowpack up to intermediate altitudes. With ascending altitude the bonding will deteriorate.

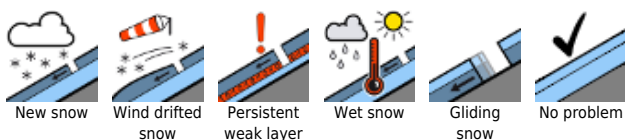
Weather

A cold front moving through in late morning and over midday. The peaks will rapidly disappear in clouds and fog. Rainfall, some snowfall, but the rain will soon turn to snow, and snow showers become more frequent in the afternoon. At the start of the day, 0 degrees at 2000 m. Strong NW winds will intensify and make temperatures drop from 5 to 10 degrees.

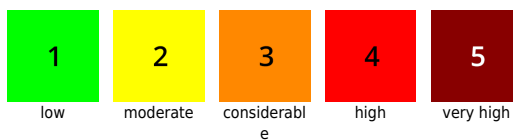
Outlook

As a result of fresh snow and wind, avalanche danger will increase. Snowdrift problem

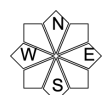
Avalanche problems



Danger ratings



Expositions

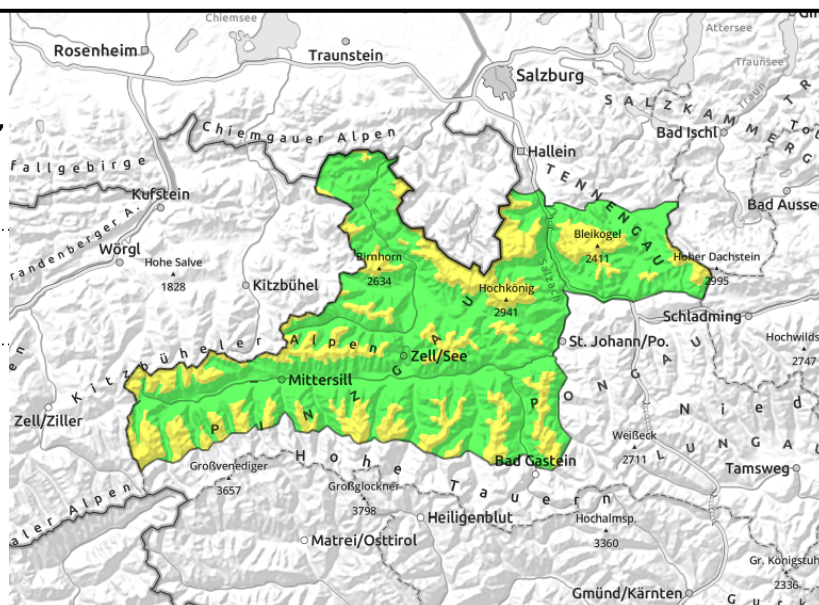


12.04.2021, afternoon

Chiemgauer Alpen, Heutal, Reiteralpe, Loferer und Leoganger Steinberge, Steinernes Meer, Hochkönig, Hagengebirge, Göllstock, Tennengebirge, Gosaukamm, Dientner Grasberge, Kitzbüheler Alpen, Glemmtal, Oberpinzgauer Grasberge, Großvenedigergruppe Nord, Glocknergruppe Nord, Goldberggruppe Nord



frequency of danger zones increasing during daytime, ridgeline zones, gullies, bowls



Frequency of avalanche prone locations is expected to increase during the course of the day.

In the morning, LOW avalanche danger. Isolated small wet-snow or glide-snow avalanches. At high altitudes on north-facing slopes, a minor snowdrift problem.

In the afternoon, avalanche danger above 1800 m will rise to MODERATE. Fresh snow and winds will generate new snowdrift accumulations, deposit them near ridgelines in N-E-S aspects and in wind-loaded gullies. These can be triggered as a thin slab or snowdrift patch.

Snowpack structure

The snowpack has settled well, is compact, often melt-freeze encrusted. Atop this base, 5-10 cm of fresh snow will be deposited during the course of the day accompanied by much wind impact. Fresh snow and drifts will generally bond well with the old snowpack up to intermediate altitudes. With ascending altitude the bonding will deteriorate.

Weather

A cold front moving through in late morning and over midday. The peaks will rapidly disappear in clouds and fog. Rainfall, some snowfall, but the rain will soon turn to snow, and snow showers become more frequent in the afternoon. At the start of the day, 0 degrees at 2000 m. Strong NW winds will intensify and make temperatures drop from 5 to 10 degrees.

Outlook

As a result of fresh snow and wind, avalanche danger will increase. Snowdrift problem

Avalanche problems



Danger ratings

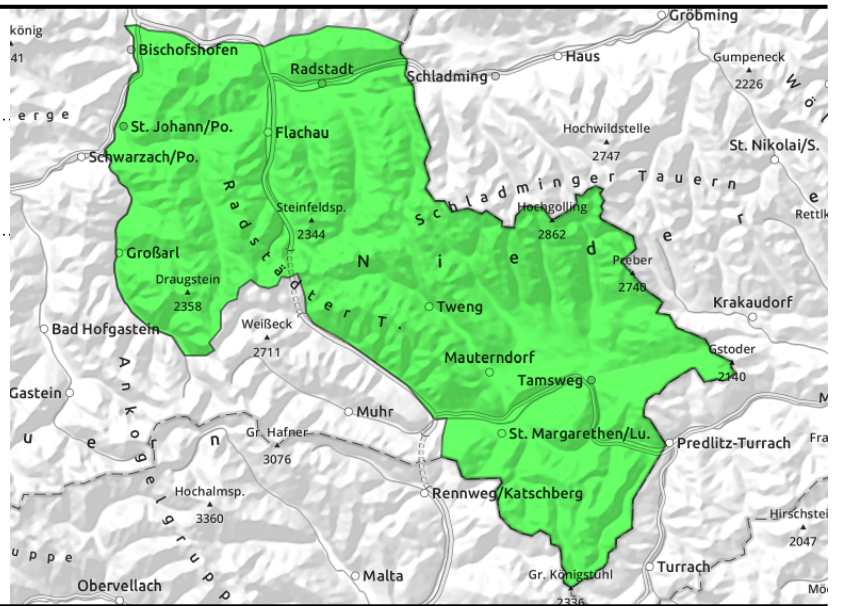
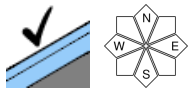


Expositions



12.04.2021

Pongauer Grasberge, Niedere Tauern Nord, Niedere Tauern Alpenhauptkamm, Niedere Tauern Süd, Nockberge



Cooling temperatures during the day, a few centimetres of fresh snow

Favourable avalanche situation. Avalanche prone locations are isolated. In the morning, small wet-snow and glide-snow avalanches are possible. In the afternoon, isolated snowdrifts will accumulate in ridge-line zones.

Snowpack structure

Well settled, compact snowpack.

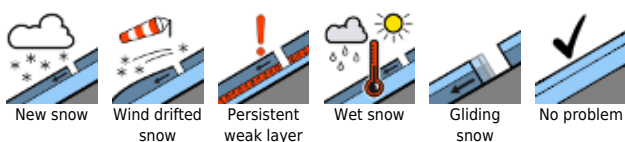
Weather

On Monday, some sunshine is possible until midday. In the afternoon, cloud cover will become heavier, the peaks will be shrouded in fog. Strong NW winds and rapidly dropping temperature, then snow showers.

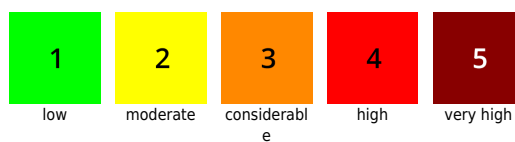
Outlook

As a result of fresh snow and wind, avalanche danger will increase. Snowdrift problem

Avalanche problems



Danger ratings



Expositions



12.04.2021

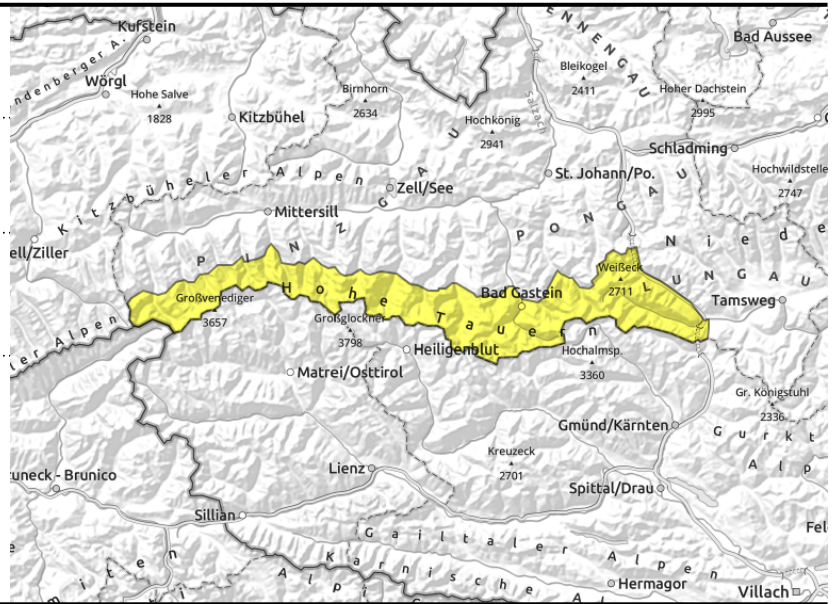
**Großvenedigergruppe Alpenhauptkamm,
Glocknergruppe Alpenhauptkamm, Goldberggruppe
Alpenhauptkamm, Ankogelgruppe, Muhr**



in gullies, steep bowls, near
ridgelines



in case of rainfall



The foehn wind will collapse.

Avalanche danger is MODERATE. At intermediate altitudes, especially where there is rainfall, small-to-medium wet-snow and glide-snow avalanches can trigger. At high and high-alpine altitudes the snowdrifts demand high caution. On north-facing slopes, the foehn-generated snowdrifts of recent days plus the freshly generated snowdrifts deposited on E-S facing slopes will be the danger. The foehn-induced drifts generally require large additional loading to trigger a slab. The fresh drifts can be triggered even by minimum additional loading. However, to start with they will be shallow.

Snowpack structure

Compact, well settled snowpack. Melt-freeze crusts dominate.

Weather

The foehn wind will collapse by midday. In the afternoon, strong NW winds will arise. Visibility will often be limited. Intermittent snowfall (rainfall until midday at intermediate altitudes). Temperatures at 2000 m will drop from 0 to -8 degrees; at 3000 m from -5 to -13 degrees.

Outlook

Heavy snowfall and winds will make avalanche danger levels rise significantly at high altitude.

Translated by Jeffrey McCabe, www.creativtrans.com

Avalanche problems



New snow



Wind drifted
snow



Persistent
weak layer



Wet snow



Gliding
snow



No problem

Danger ratings



1

low



2

moderate



3

considerabl

e



4

high



5

very high



Expositions