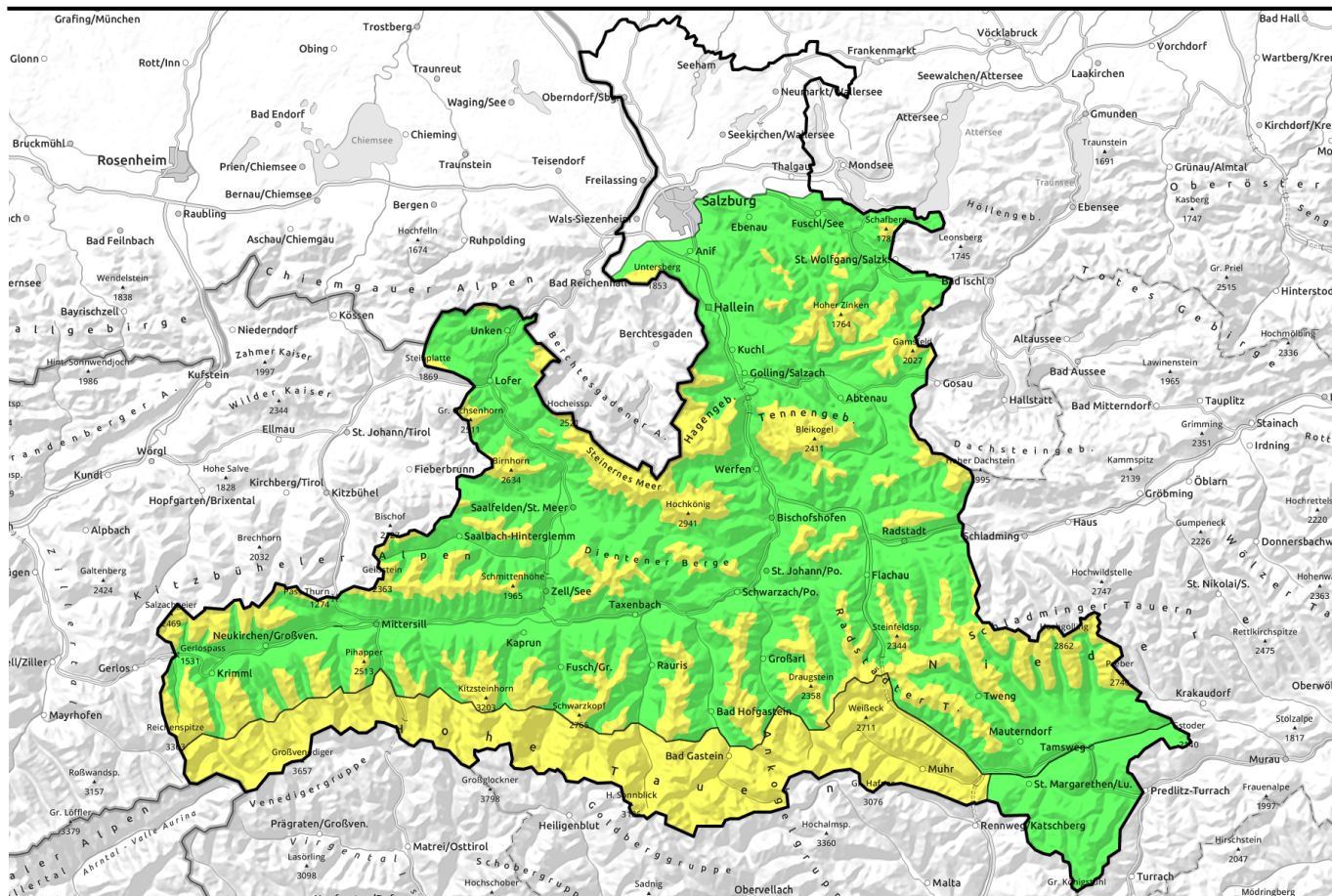


11.04.2021, morning



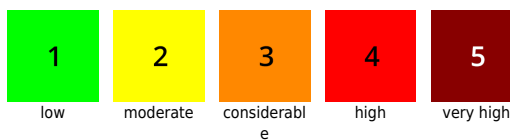
Fresh foehn-generated snowdrifts + daytime cycle

	Großvenedigergruppe Alpenhauptkamm, Glocknergruppe Alpenhauptkamm, Goldberggruppe Alpenhauptkamm, Ankogelgruppe, Muhr	
	Nockberge	
	2000 m Osterhorngruppe, Gamsfeldgruppe, Untersbergstock, Chiemgauer Alpen, Heutal, Reiteralpe, Kitzbüheler Alpen, Glemmtal, Oberpinzgauer Grasberge, Dientner Grasberge, Pongauer Grasberge, Niedere Tauern Nord, Niedere Tauern Alpenhauptkamm, Niedere Tauern Süd, Loferer und Leoganger Steinberge, Steinernes Meer, Hochkönig, Hagengebirge, Göllstock, Tennengebirge, Gosaukamm, Großvenedigergruppe Nord, Glocknergruppe Nord, Goldberggruppe Nord	

Avalanche problems



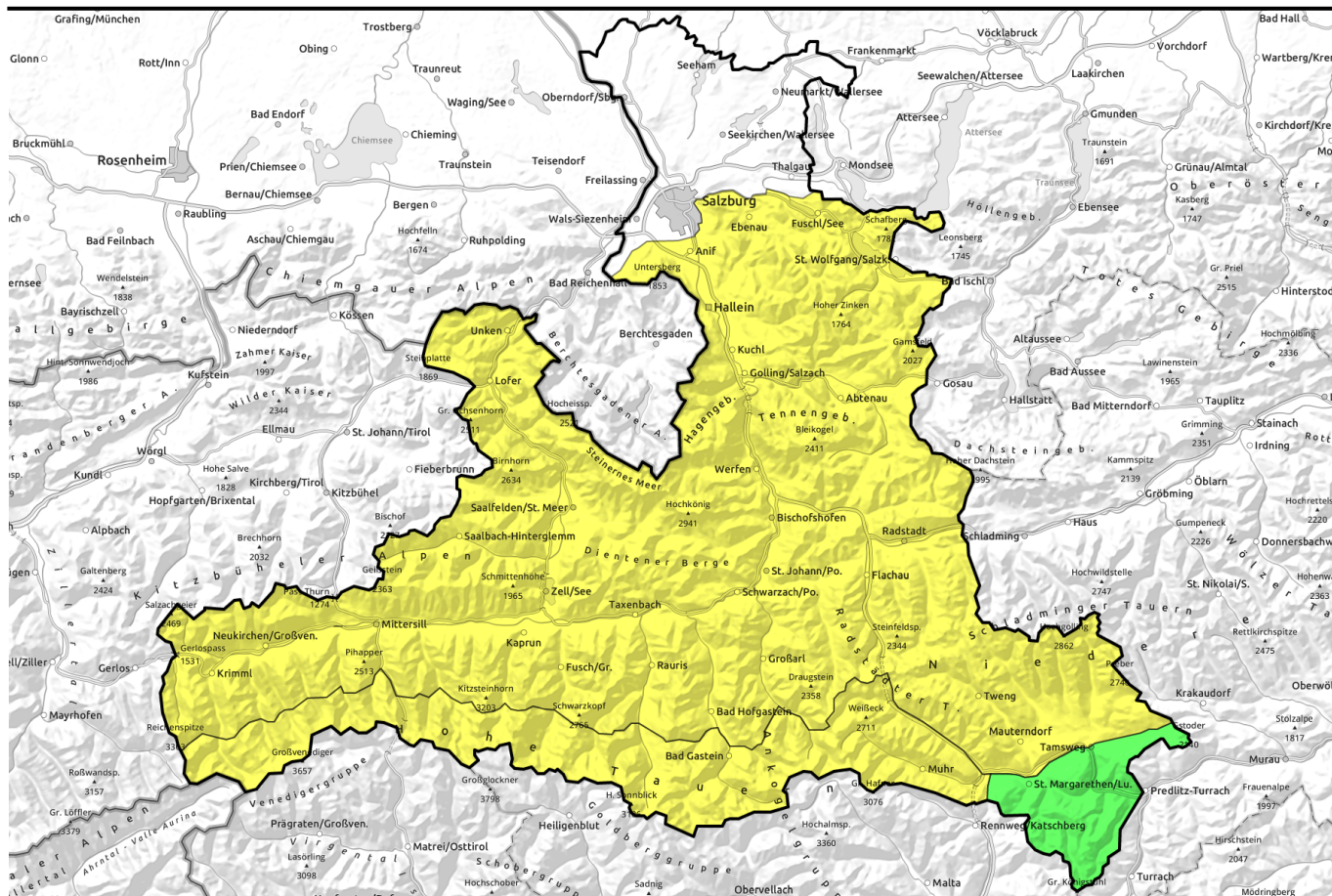
Danger ratings



Expositions



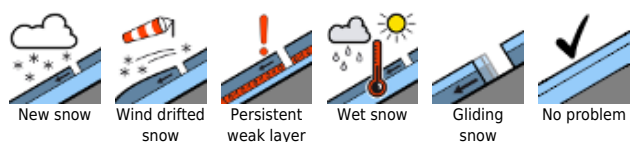
11.04.2021, afternoon



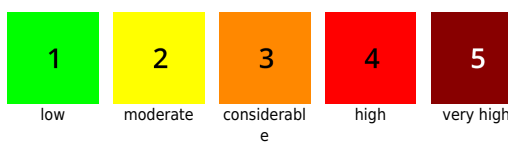
Frischer Föhntriebschnee und Tagesgang

	<p>Großvenedigergruppe Alpenhauptkamm, Glocknergruppe Alpenhauptkamm, Goldberggruppe Alpenhauptkamm, Ankogelgruppe, Muhr</p>	
	<p>Nockberge</p>	
	<p>Osterhorngruppe, Gamsfeldgruppe, Untersbergstock, Chiemgauer Alpen, Heutal, Reiteralpe, Kitzbüheler Alpen, Glemmtal, Oberpinzgauer Grasberge, Dientner Grasberge, Pongauer Grasberge, Niedere Tauern Nord, Niedere Tauern Alpenhauptkamm, Niedere Tauern Süd, Loferer und Leoganger Steinberge, Steinernes Meer, Hochkönig, Hagengebirge, Göllstock, Tennengebirge, Gosaukamm, Großvenedigergruppe Nord, Glocknergruppe Nord, Goldberggruppe Nord</p>	

Avalanche problems



Danger ratings



Expositions



11.04.2021

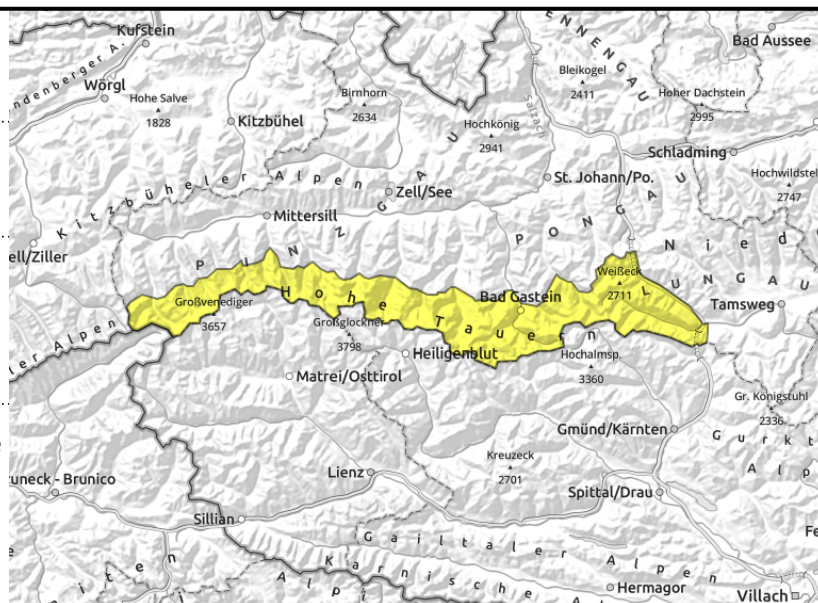
Großvenedigergruppe Alpenhauptkamm, Glocknergruppe Alpenhauptkamm, Goldberggruppe Alpenhauptkamm, Ankogelgruppe, Muhr



near to and distant from ridgelines behind protruberances, fresh, thin snowdrifts



warmth impulse, daytime cycle of naturally triggered avalanches



Caution: foehn-induced snowdrifts and daytime loss of snowpack firmness

Avalanche danger is MODERATE, there are two threats:

1. Snowdrift problem: avalanche prone locations above 2000 m in steep ridgeline terrain and behind protruberances distant from ridges in steep NW-N-E aspects and in steep gullies. Proneness to triggering increases with ascending altitude. Fresh foehn-generated drifts can be easily triggered as a medium-sized slab by minimum additional loading.
2. Daytime loss of snowpack firmness: on sun-drenched rocky steep slopes, naturally triggered small-to-medium (wet) loose-snow avalanches are possible. This applies to some steep slopes below 2500 m. On very steep grassy slopes below 1800 m also naturally triggered medium-sized glide-snow avalanches are possible in isolated cases. Caution in ridgeline terrain: cornices are breakable.

Snowpack structure

The fresh snow from Tuesday and Wednesday has settled significantly in the noticeably higher temperatures, primarily below 2500 m, and has become moistened on sunny slopes, is still dry on shady slopes, At high altitudes there are still trigger-sensitive snowdrifts (weak layer inside the latest round of fresh snow or beneath the melt-freeze crust below that) which stormy W-N winds (and, currently, southerly foehn winds) have generated. Thin melt-freeze crusts soften during the daytime, depending on sunshine. At low and intermediate altitudes the daytime warmth and water seepage cause the snowpack to lose its firmness. On very steep slopes (and where the ground was bare before the recent round of snowfall) the fresh snow can glide over the ground.

Weather

Following a night of overcast skies, the Main Tauern Ridge will be shrouded in clouds from the south, some light snowfall is possible. Further north, visibility is still good. Foehn wind will intensify during the day, be blowing at stormy 60-90 km/hr. At 2000 m, +1 degree; at 3000 m, -4 degrees. On Monday morning, foehn influence will come to an end, with rain showers and subsequently plummeting temperatures plus fresh snowfall.

Avalanche problems



New snow



Wind drifted snow



Persistent weak layer



Wet snow



Gliding snow



No problem

Danger ratings



1

low



2

moderate



3

considerabl

e



4

high



5

very high

Expositions

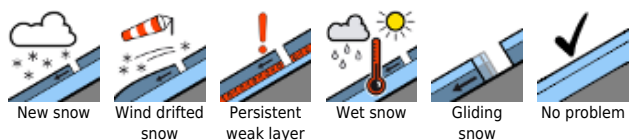


11.04.2021

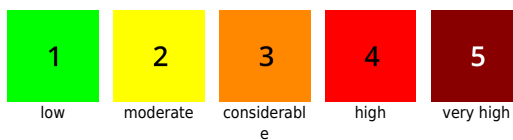
Outlook

On Monday: rainfall. Moderate danger of medium-sized naturally triggered wet-snow avalanches up to 1800 m for a short time.

Avalanche problems



Danger ratings



Expositions



11.04.2021

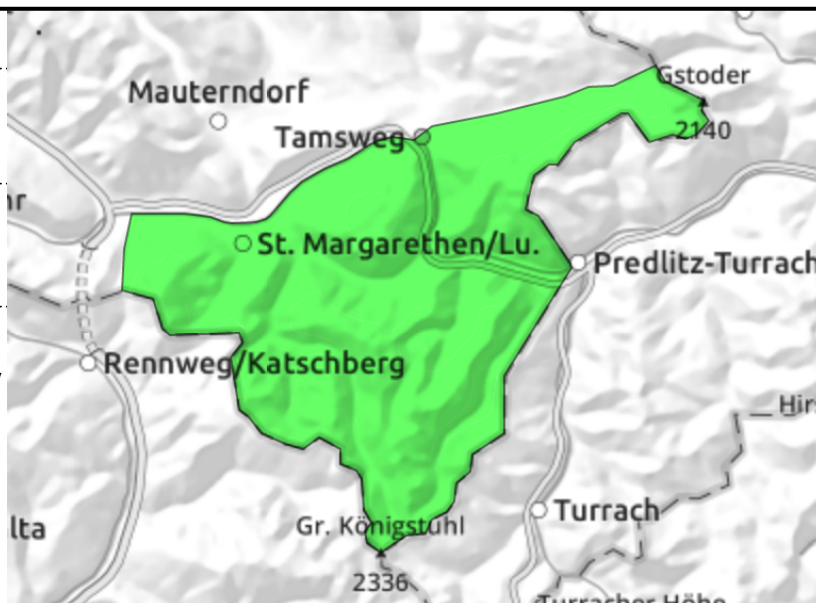
Nockberge



isolated danger zones behind protruberances and in gullies



small superficial loose-snow avalanches in very steep sunny terrain in the afternoon



Small avalanche prone locations due to snowdrifts

Avalanche danger is LOW. Only very isolated danger zones for mostly small dry slabs behind very steep protruberances and in gullies. There, triggering a snowdrift patch could lead to a fall.

Snowpack structure

Well-settled, compact old snowpack, in wind-protected shady terrain a few centimetres of settled fresh snow atop of it. On sunny slopes, breakable crusts dominate. Small thin drifts are trigger-sensitive on north-facing slopes.

Weather

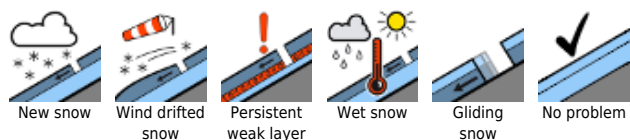
Following a night of overcast skies, the peaks on Sunday will be veiled in low-lying cloud from the south. On the Carinthian border, some light snowfall is possible. Snowfall level at 1600 m. Southerly winds will be blowing at 40-60 km/hr. At 2000 m, -1 degree.

On Monday, rainfall to start with up to 1800 m. then lower temperatures and fresh snowfall.

Outlook

On Monday, moderate danger of naturally triggered avalanches.

Avalanche problems



Danger ratings

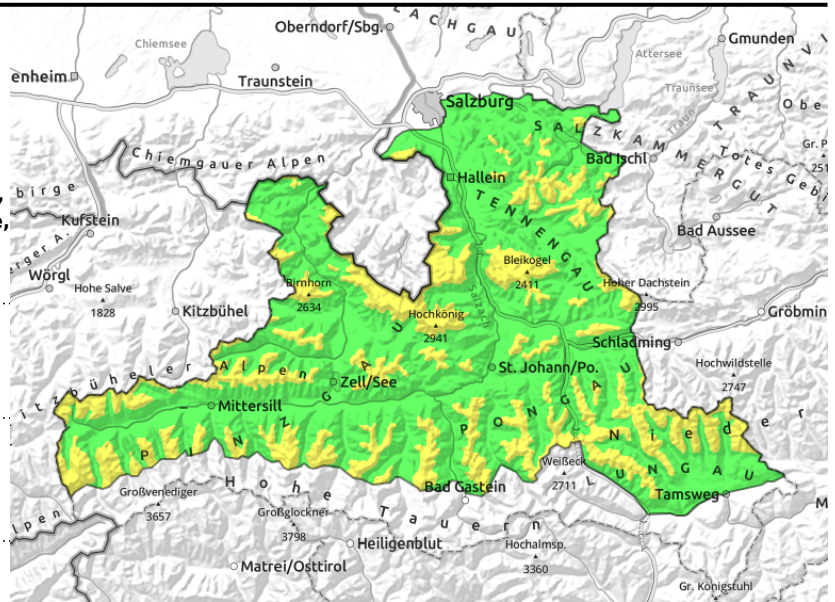


Expositions



11.04.2021, morning

Osterhorngruppe, Gamsfeldgruppe, Untersbergstock, Chiemgauer Alpen, Heutal, Reiteralpe, Kitzbüheler Alpen, Glemmtal, Oberpinzgauer Grasberge, Dientner Grasberge, Pongauer Grasberge, Niedere Tauern Nord, Niedere Tauern Alpenhauptkamm, Niedere Tauern Süd, Loferer und Leoganger Steinberge, Steinernes Meer, Hochkönig, Hagengebirge, Göllstock, Tennengebirge, Gosaukamm, Großvenedigergruppe Nord, Glocknergruppe Nord, Goldberggruppe Nord



warmth impulse, reinforced by solar radiation, below 2400 m



behind protruberances, in gullies, steep bowls

Daytime loss of firmness. Caution: snowdrifts at high altitudes.

Avalanche danger is subject to a daytime cycle and rises during the day to MODERATE, there are two threats:

1. Snowdrift problem: avalanche prone locations above 2000 m in steep ridgeline terrain and behind protruberances distant from ridges in steep NW-N-E aspects and in steep gullies. Proneness to triggering increases with ascending altitude. Fresh foehn-generated drifts can be easily triggered as a medium-sized slab by minimum additional loading.
2. Daytime loss of snowpack firmness: on sun-drenched rocky steep slopes, naturally triggered small-to-medium (wet) loose-snow avalanches are possible. This applies to some steep slopes below 2500 m. On very steep grassy slopes below 1800 m also naturally triggered medium-sized glide-snow avalanches are possible in isolated cases. Caution in ridgeline terrain: cornices are breakable.

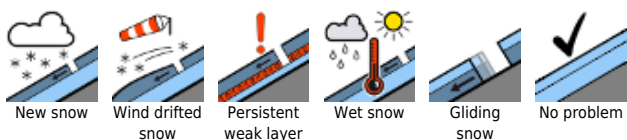
Snowpack structure

The fresh snow from Tuesday and Wednesday has settled significantly in the noticeably higher temperatures, primarily below 2500 m, and has become moistened on sunny slopes, is still dry on shady slopes, At high altitudes there are still trigger-sensitive snowdrifts (weak layer inside the latest round of fresh snow or beneath the melt-freeze crust below that) which stormy W-N winds (and, currently, southerly foehn winds) have generated. Thin melt-freeze crusts soften during the daytime, depending on sunshine. At low and intermediate altitudes the daytime warmth and water seepage cause the snowpack to lose its firmness. On very steep slopes (and where the ground was bare before the recent round of snowfall) the fresh snow can glide over the ground.

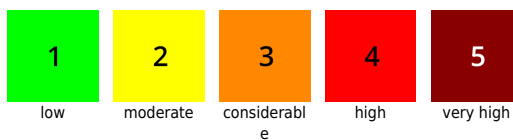
Weather

Following a night of overcast skies, the Main Tauern Ridge is shrouded in clouds from the south, some light snowfall is possible. Further north, visibility is still good. Foehn wind will intensify during the day, be blowing at stormy 60-90 km/hr. At 2000 m, +1 degree; at 3000 m, -4 degrees. On Monday morning, foehn influence will come to an end, with rain showers and subsequently plummeting temperatures plus fresh snowfall.

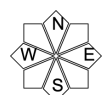
Avalanche problems



Danger ratings



Expositions

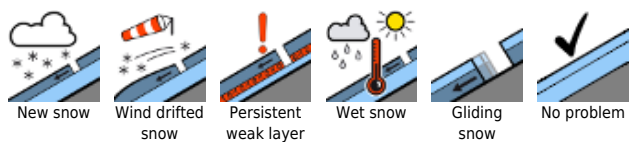


11.04.2021, morning

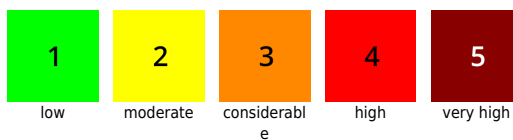
Outlook

On Monday, rainfall, short-term danger of medium-sized naturally triggered wet-snow avalanches up to nearly 1800 m.

Avalanche problems



Danger ratings

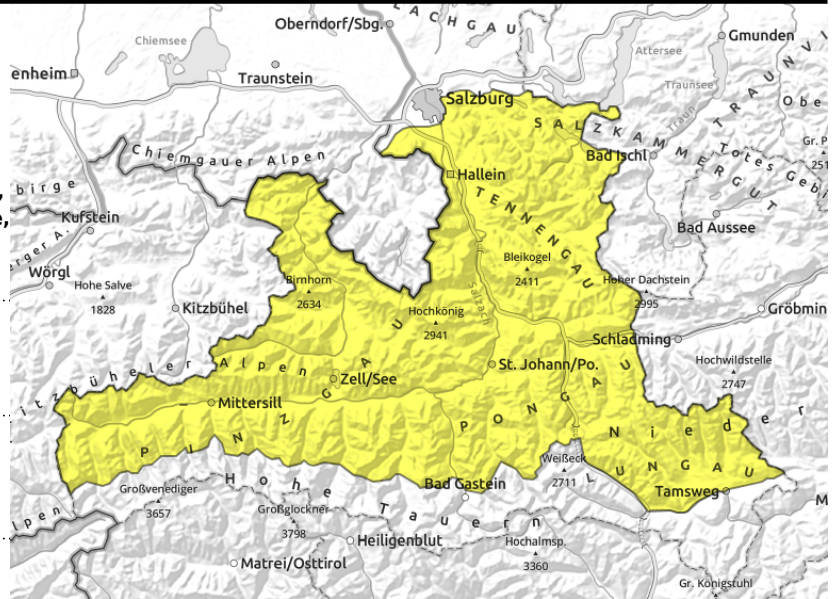


Expositions



11.04.2021, afternoon

Osterhorngruppe, Gamsfeldgruppe, Untersbergstock, Chiemgauer Alpen, Heutal, Reiteralpe, Kitzbüheler Alpen, Glemmtal, Oberpinzgauer Grasberge, Dientner Grasberge, Pongauer Grasberge, Niedere Tauern Nord, Niedere Tauern Alpenhauptkamm, Niedere Tauern Süd, Loferer und Leoganger Steinberge, Steinernes Meer, Hochkönig, Hagengebirge, Göllstock, Tennengebirge, Gosaukamm, Großvenedigergruppe Nord, Glocknergruppe Nord, Goldberggruppe Nord



warmth impulse, reinforced by solar radiation, below 2400 m



behind protruberances, in gullies, steep bowls

Daytime loss of firmness. Caution: snowdrifts at high altitudes.

Avalanche danger is subject to a daytime cycle and rises during the day to MODERATE, there are two threats:

1. Snowdrift problem: avalanche prone locations above 2000 m in steep ridgeline terrain and behind protruberances distant from ridges in steep NW-N-E aspects and in steep gullies. Proneness to triggering increases with ascending altitude. Fresh foehn-generated drifts can be easily triggered as a medium-sized slab by minimum additional loading.
2. Daytime loss of snowpack firmness: on sun-drenched rocky steep slopes, naturally triggered small-to-medium (wet) loose-snow avalanches are possible. This applies to some steep slopes below 2500 m. On very steep grassy slopes below 1800 m also naturally triggered medium-sized glide-snow avalanches are possible in isolated cases. Caution in ridgeline terrain: cornices are breakable.

Snowpack structure

The fresh snow from Tuesday and Wednesday has settled significantly in the noticeably higher temperatures, primarily below 2500 m, and has become moistened on sunny slopes, is still dry on shady slopes, At high altitudes there are still trigger-sensitive snowdrifts (weak layer inside the latest round of fresh snow or beneath the melt-freeze crust below that) which stormy W-N winds (and, currently, southerly foehn winds) have generated. Thin melt-freeze crusts soften during the daytime, depending on sunshine. At low and intermediate altitudes the daytime warmth and water seepage cause the snowpack to lose its firmness. On very steep slopes (and where the ground was bare before the recent round of snowfall) the fresh snow can glide over the ground.

Weather

Following a night of overcast skies, the Main Tauern Ridge is shrouded in clouds from the south, some light snowfall is possible. Further north, visibility is still good. Foehn wind will intensify during the day, be blowing at stormy 60-90 km/hr. At 2000 m, +1 degree; at 3000 m, -4 degrees. On Monday morning, foehn influence will come to an end, with rain showers and subsequently plummeting temperatures plus fresh snowfall.

Avalanche problems



Danger ratings



Expositions



11.04.2021, afternoon

Outlook

On Monday, rainfall, short-term danger of medium-sized naturally triggered wet-snow avalanches up to nearly 1800 m.

Translated by Jeffrey McCabe, www.creativtrans.com

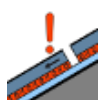
Avalanche problems



New snow



Wind drifted
snow



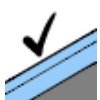
Persistent
weak layer



Wet snow

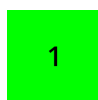


Gliding
snow



No problem

Danger ratings



1

low



2

moderate



3

considerabl
e



4

high



5

very high

Expositions

