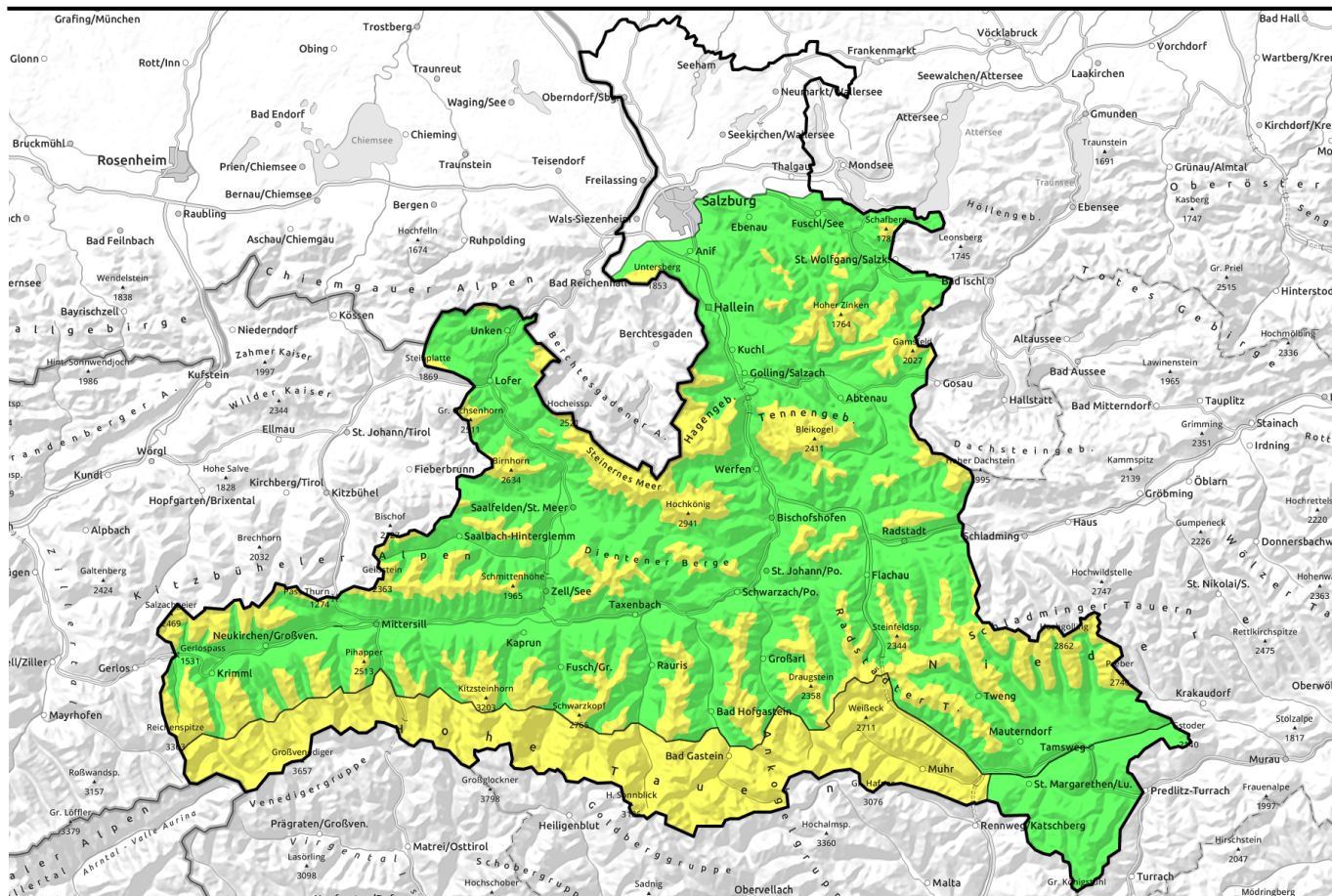


10.04.2021, morning



Fresh foehn-generated snowdrifts + daytime cycle

	Großenedigergruppe Alpenhauptkamm, Glocknergruppe Alpenhauptkamm, Goldberggruppe Alpenhauptkamm, Ankogelgruppe, Muhr	
	Nockberge	
	2000 m Osterhorngruppe, Gamsfeldgruppe, Untersbergstock, Chiemgauer Alpen, Heutal, Reiteralpe, Kitzbüheler Alpen, Glemmtal, Oberpinzgauer Grasberge, Dientner Grasberge, Pongauer Grasberge, Niedere Tauern Nord, Niedere Tauern Alpenhauptkamm, Niedere Tauern Süd, Loferer und Leoganger Steinberge, Steinernes Meer, Hochkönig, Hagengebirge, Göllstock, Tennengebirge, Gosaukamm, Großenedigergruppe Nord, Glocknergruppe Nord, Goldberggruppe Nord	

Avalanche problems



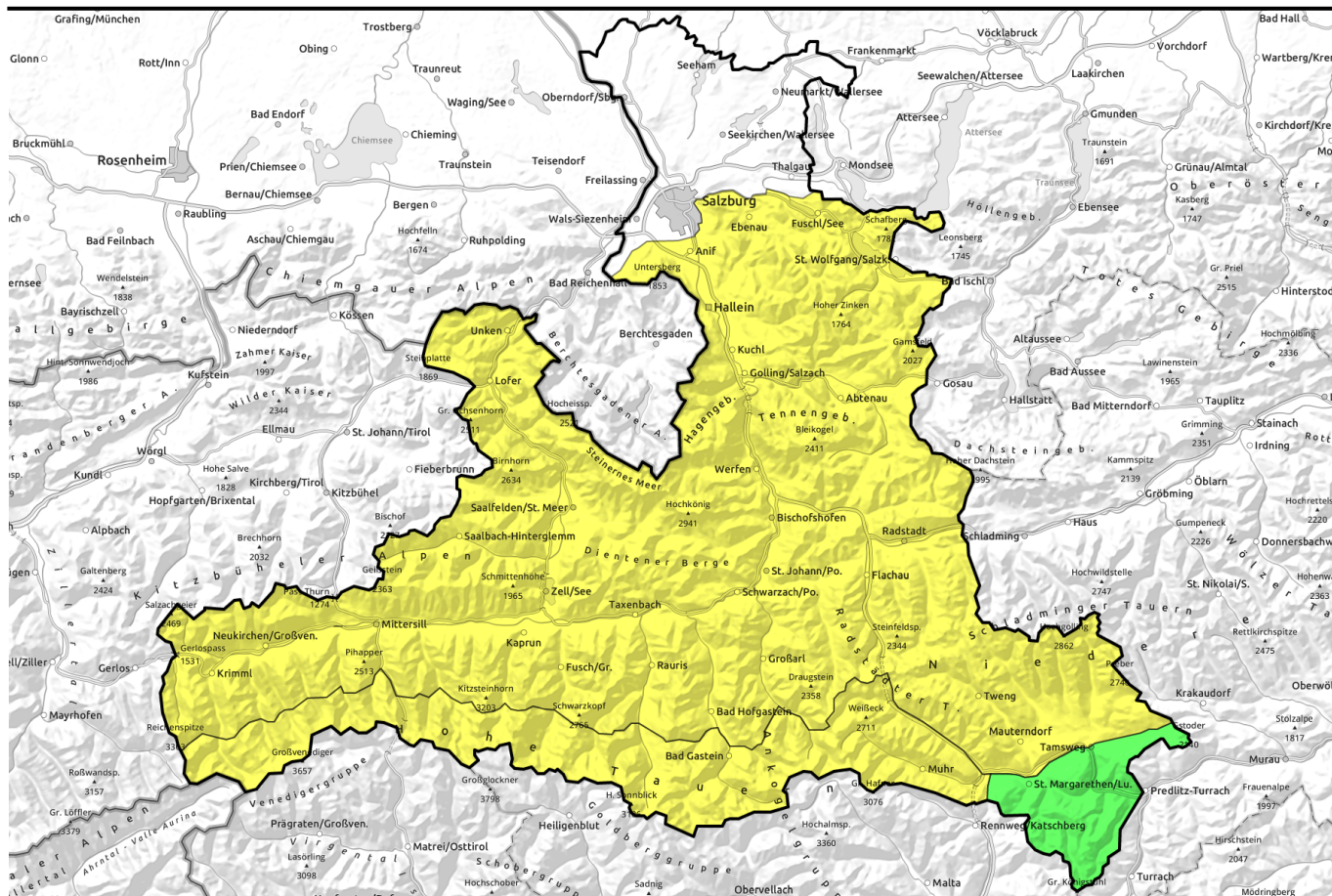
Danger ratings



Expositions



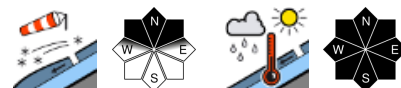
10.04.2021, afternoon



Frischer Föhntriebschnee und Tagesgang



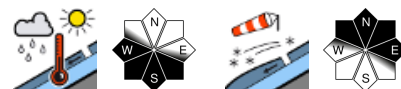
Großvenedigergruppe Alpenhauptkamm, Glocknergruppe Alpenhauptkamm, Goldberggruppe Alpenhauptkamm, Ankogelgruppe, Muhr



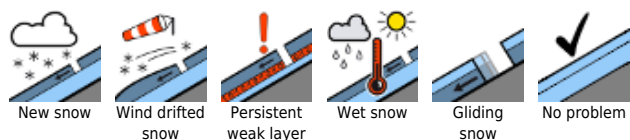
Nockberge



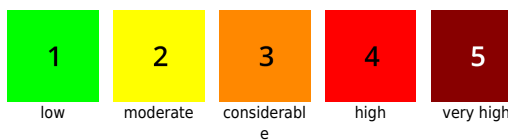
Osterhorngruppe, Gamsfeldgruppe, Untersbergstock, Chiemgauer Alpen, Heutal, Reiteralpe, Kitzbüheler Alpen, Glemmtal, Oberpinzgauer Grasberge, Dientner Grasberge, Pongauer Grasberge, Niedere Tauern Nord, Niedere Tauern Alpenhauptkamm, Niedere Tauern Süd, Loferer und Leoganger Steinberge, Steinernes Meer, Hochkönig, Hagengebirge, Göllstock, Tennengebirge, Gosaukamm, Großvenedigergruppe Nord, Glocknergruppe Nord, Goldberggruppe Nord



Avalanche problems



Danger ratings



Expositions



10.04.2021

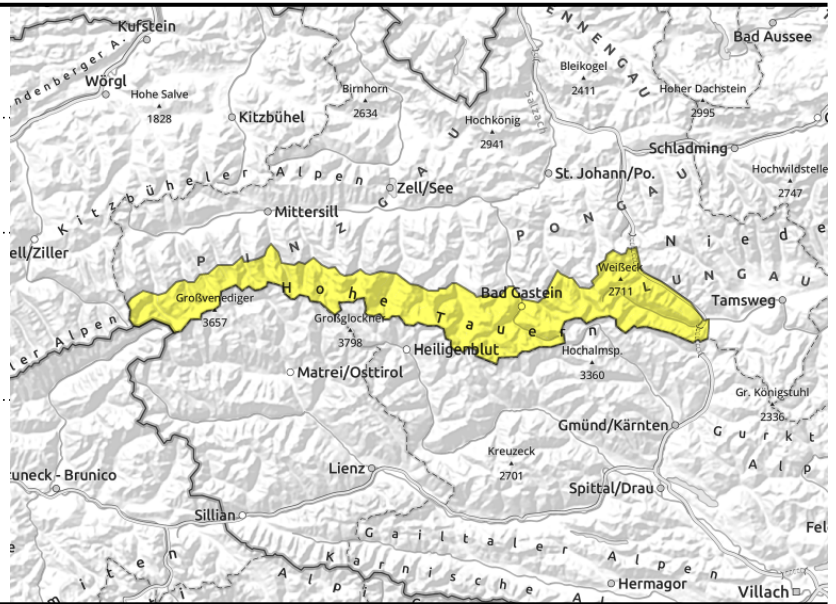
Großvenedigergruppe Alpenhauptkamm, Glocknergruppe Alpenhauptkamm, Goldberggruppe Alpenhauptkamm, Ankogelgruppe, Muhr



near to and distant from ridgelines, behind protruberances, fresh thin snowdrifts



strong warmth impulse, daytime cycle of naturally triggered avalanches



Avoid snowdrifts. Caution: loss of snowpack firmness.

Avalanche danger is MODERATE. Two threats prevail:

1. Snowdrift problem: avalanche prone locations esp. above 2000 m in steep ridgeline terrain and behind protruberances distant from ridgelines in NW-N-E aspects and steep gullies. The proneness to triggering increases with ascending altitude. Fresh drifts can be easily triggered by minimum additional loading as small (in isolated cases as medium-sized) slab avalanches.
2. Daytime loss of snowpack firmness: on sun-drenched steep rocky slopes, naturally triggered small-to-medium (wet) loose-snow avalanches are possible. This applies to some steep slopes below 2400 m. On very steep grassy slopes below 1800 m, also isolated naturally triggered medium-sized glide-snow avalanches are possible. Caution in ridgeline areas: cornices can break.

Snowpack structure

The fresh snow of recent days has settled well below 2500 m amid the significant warming, and on sunny slopes has moistened, on shady slopes it is still dry above intermediate altitudes. At high altitudes the snowdrifts generated by stormy W-N winds are often still prone to triggering (weak layer inside the latest round of fresh snow or beneath the melt-freeze crust). Thin melt-freeze crusts soften up during the day, depending on the intensity of sunshine. At low and intermediate altitudes, warmth also causes water seepage and loss of firmness in the fresh snow. On very steep and previously bare slopes, the fresh snow can glide across the ground.

Weather

Following a night of partly-clear, partly-cloudy skies, the sun on Saturday morning will be hampered in phases by clouds passing through, light conditions can be diffuse. In the afternoon, more sunshine is anticipated. The southerly foehn wind will be blowing at 50-70 km/hr. At 2000 m: -1 to +3 degrees; at 3000 m: -5 degrees.

On Sunday, foehn winds will intensify. Summits on the Main Alpine Ridge will be veiled from the south.

Outlook

On Sunday, little change. Fresh foehn-generated snowdrifts still require caution. Also, the daytime loss of snowpack firmness.

Avalanche problems



New snow



Wind drifted snow



Persistent weak layer



Wet snow



Gliding snow



No problem

Danger ratings



1

low



2

moderate



3

considerabl

e



4

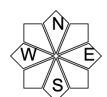
high



5

very high

Expositions



10.04.2021

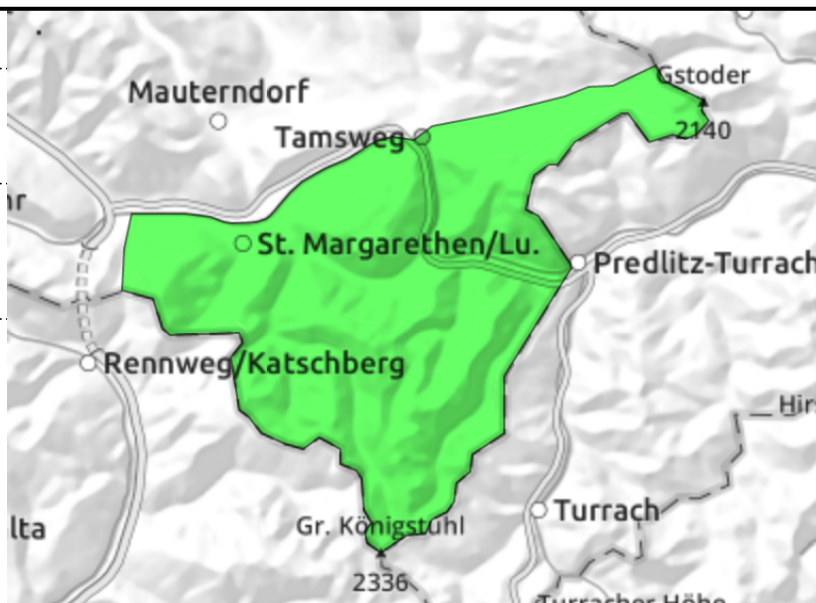
Nockberge



isolated avalanche prone locations behind protruberances and in gullies



small afternoon superficial loose-snow avalanches in very steep sunny terrain



Small avalanche prone locations due to drifts, small loose-snow avalanches in the afternoon

Avalanche danger is LOW. Only isolated avalanche prone locations exist for primarily small, dry slab avalanches triggering behind very steep protruberances and in gullies. There, triggering a snowdrift could force a fall. Superficial (wet) loose-snow naturally triggered avalanches are possible in sun-drenched steep terrain, they will remain small.

Snowpack structure

Well-settled, compact old snowpack. In wind-protected shady terrain there is a small amount of fresh snow atop of it. On steep sunny slopes, the melt-freeze crust is often capable of bearing loads; this slowly turns to firn snow. Small, thin, easily recognized snowdrifts in northern aspects can be prone to triggering.

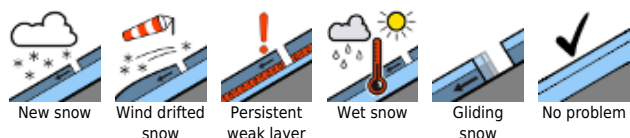
Weather

Following a night of partly-clear, partly-cloudy skies, the sun on Saturday morning will be hampered in phases by clouds passing through, light conditions can be diffuse. In the afternoon, more sunshine is anticipated. The southerly foehn wind will be blowing at 40-50 km/hr. At 2000 m: -0 degrees. On Sunday, low-lying clouds. Sunday will have next to no sunshine, it will remain mostly dry.

Outlook

Following a night of cloudy skies, thin melt-freeze crusts which will not soften (due to lack of daytime solar radiation).

Avalanche problems



Danger ratings

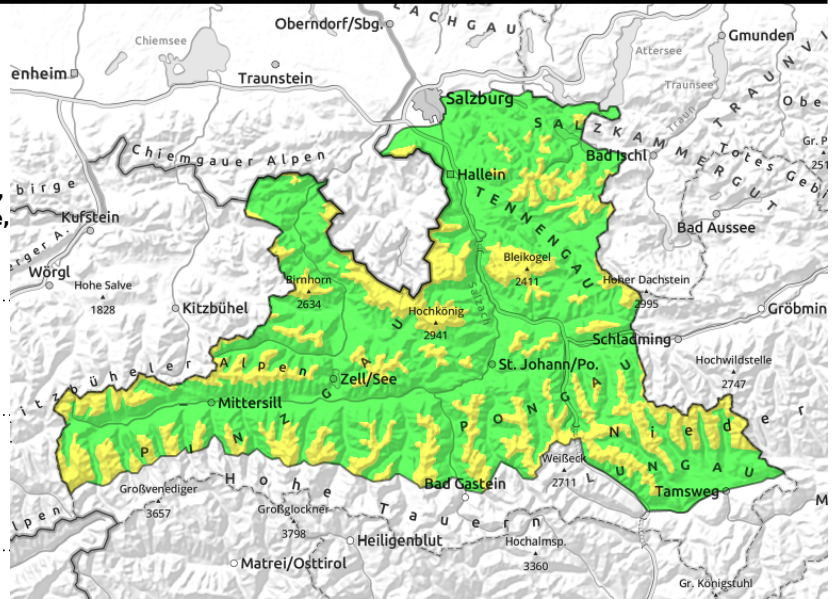




Expositions





10.04.2021, morning

Osterhorngruppe, Gamsfeldgruppe, Untersbergstock, Chiemgauer Alpen, Heutal, Reiteralpe, Kitzbüheler Alpen, Glemmtal, Oberpinzgauer Grasberge, Dientner Grasberge, Pongauer Grasberge, Niedere Tauern Nord, Niedere Tauern Alpenhauptkamm, Niedere Tauern Süd, Loferer und Leoganger Steinberge, Steinernes Meer, Hochkönig, Hagengebirge, Göllstock, Tennengebirge, Gosaukamm, Großvenedigergruppe Nord, Glocknergruppe Nord, Goldberggruppe Nord

warmth impulse, reinforced by solar radiation in the afternoon below 2400 m

behind protruberances, in gullies, steep bowls

Daytime loss of firmness. Avoid snowdrifts at high altitudes.

Avalanche danger is subject to a daytime danger cycle, will rise in the afternoon to MODERATE. There are two threats:

1. Snowdrift problem: avalanche prone locations esp. above 2000 m in steep ridgeline terrain and behind protruberances distant from ridgelines in NE-E aspects and steep gullies. The proneness to triggering increases with ascending altitude. Fresh drifts can be easily triggered by minimum additional loading as small (in isolated cases as medium-sized) slab avalanches.
2. Daytime loss of snowpack firmness: on sun-drenched steep rocky slopes, naturally triggered small-to-medium (wet) loose-snow avalanches are possible. This applies to some steep slopes below 2400 m. On very steep grassy slopes below 1800 m, also isolated naturally triggered medium-sized glide-snow avalanches are possible. Caution in ridgeline areas: cornices can break.

Snowpack structure

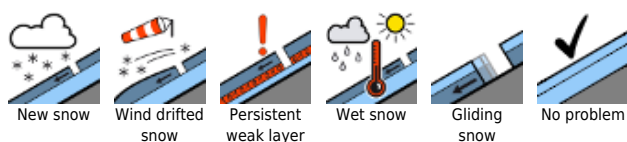
The fresh snow of recent days has settled well below 2500 m amid the significant warming, and on sunny slopes has moistened, on shady slopes it is still dry above intermediate altitudes. At high altitudes the snowdrifts generated by stormy W-N winds are often still prone to triggering (weak layer inside the latest round of fresh snow or beneath the melt-freeze crust). Thin melt-freeze crusts soften up during the day, depending on the intensity of sunshine. At low and intermediate altitudes, warmth also causes water seepage and loss of firmness in the fresh snow. On very steep and previously bare slopes, the fresh snow can glide across the ground.

Weather

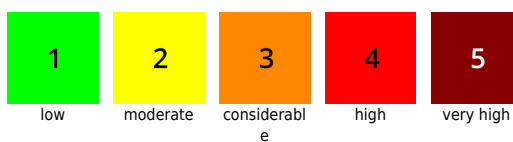
Following a night of partly-clear, partly-cloudy skies, the sun on Saturday morning will be hampered in phases by clouds passing through, light conditions can be diffuse. In the afternoon, more sunshine is anticipated. The southerly foehn wind will be blowing at 50-70 km/hr. At 2000 m: -1 to +3 degrees; at 3000 m: -5 degrees.

On Sunday, foehn winds will intensify, reaching the high altitude zones of the Northern Alps. In southern regions, barrier cloud will accumulate, intermittently sunny north of the Tauern.

Avalanche problems



Danger ratings



Expositions



10.04.2021, morning

Outlook

On Sunday, little change. Fresh foehn-generated snowdrifts still require caution. Also, the daytime loss of snowpack firmness.

Avalanche problems



New snow



Wind drifted
snow



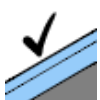
Persistent
weak layer



Wet snow



Gliding
snow



No problem

Danger ratings



1

low



2

moderate



3

considerabl
e



4

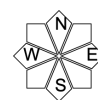
high



5

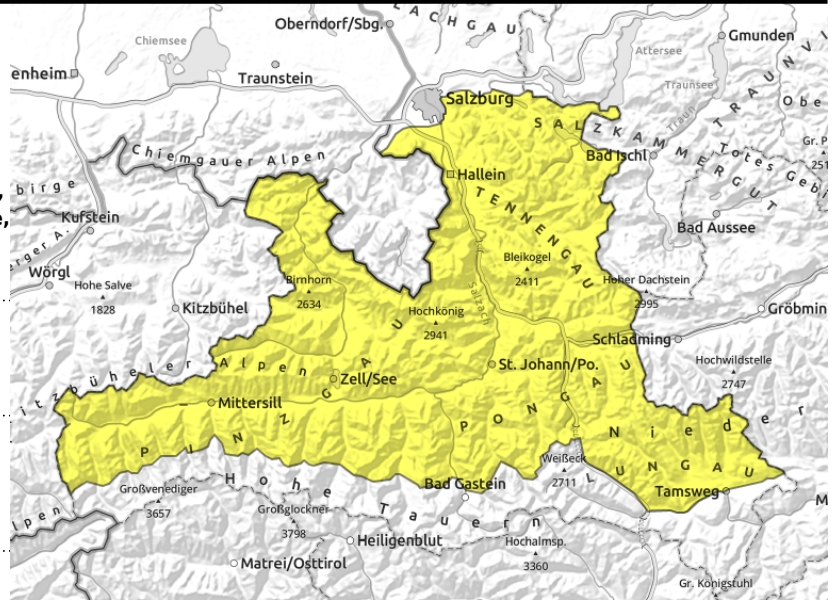
very high

Expositions



10.04.2021, afternoon

Osterhorngruppe, Gamsfeldgruppe, Untersbergstock, Chiemgauer Alpen, Heutal, Reiteralpe, Kitzbüheler Alpen, Glemmtal, Oberpinzgauer Grasberge, Dientner Grasberge, Pongauer Grasberge, Niedere Tauern Nord, Niedere Tauern Alpenhauptkamm, Niedere Tauern Süd, Loferer und Leoganger Steinberge, Steinernes Meer, Hochkönig, Hagengebirge, Göllstock, Tennengebirge, Gosaukamm, Großvenedigergruppe Nord, Glocknergruppe Nord, Goldberggruppe Nord



warmth impulse, reinforced by solar radiation in the afternoon below 2400 m



behind protruberances, in gullies, steep bowls

Daytime loss of firmness. Avoid snowdrifts at high altitudes.

Avalanche danger is subject to a daytime danger cycle, will rise in the afternoon to MODERATE. There are two threats:

1. Snowdrift problem: avalanche prone locations esp. above 2000 m in steep ridgeline terrain and behind protruberances distant from ridgelines in NE-E aspects and steep gullies. The proneness to triggering increases with ascending altitude. Fresh drifts can be easily triggered by minimum additional loading as small (in isolated cases as medium-sized) slab avalanches.
2. Daytime loss of snowpack firmness: on sun-drenched steep rocky slopes, naturally triggered small-to-medium (wet) loose-snow avalanches are possible. This applies to some steep slopes below 2400 m. On very steep grassy slopes below 1800 m, also isolated naturally triggered medium-sized glide-snow avalanches are possible. Caution in ridgeline areas: cornices can break.

Snowpack structure

The fresh snow of recent days has settled well below 2500 m amid the significant warming, and on sunny slopes has moistened, on shady slopes it is still dry above intermediate altitudes. At high altitudes the snowdrifts generated by stormy W-N winds are often still prone to triggering (weak layer inside the latest round of fresh snow or beneath the melt-freeze crust). Thin melt-freeze crusts soften up during the day, depending on the intensity of sunshine. At low and intermediate altitudes, warmth also causes water seepage and loss of firmness in the fresh snow. On very steep and previously bare slopes, the fresh snow can glide across the ground.

Weather

Following a night of partly-clear, partly-cloudy skies, the sun on Saturday morning will be hampered in phases by clouds passing through, light conditions can be diffuse. In the afternoon, more sunshine is anticipated. The southerly foehn wind will be blowing at 50-70 km/hr. At 2000 m: -1 to +3 degrees; at 3000 m: -5 degrees.

On Sunday, foehn winds will intensify, reaching the high altitude zones of the Northern Alps. In southern regions, barrier cloud will accumulate, intermittently sunny north of the Tauern.

Avalanche problems



Danger ratings



Expositions



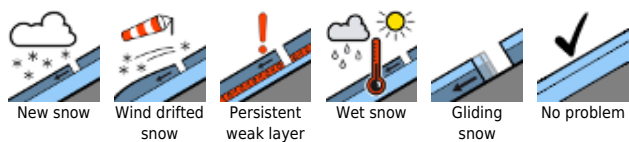
10.04.2021, afternoon

Outlook

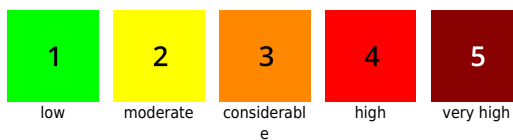
On Sunday, little change. Fresh foehn-generated snowdrifts still require caution. Also, the daytime loss of snowpack firmness.

Translated by Jeffrey McCabe, www.creativtrans.com

Avalanche problems



Danger ratings



Expositions

