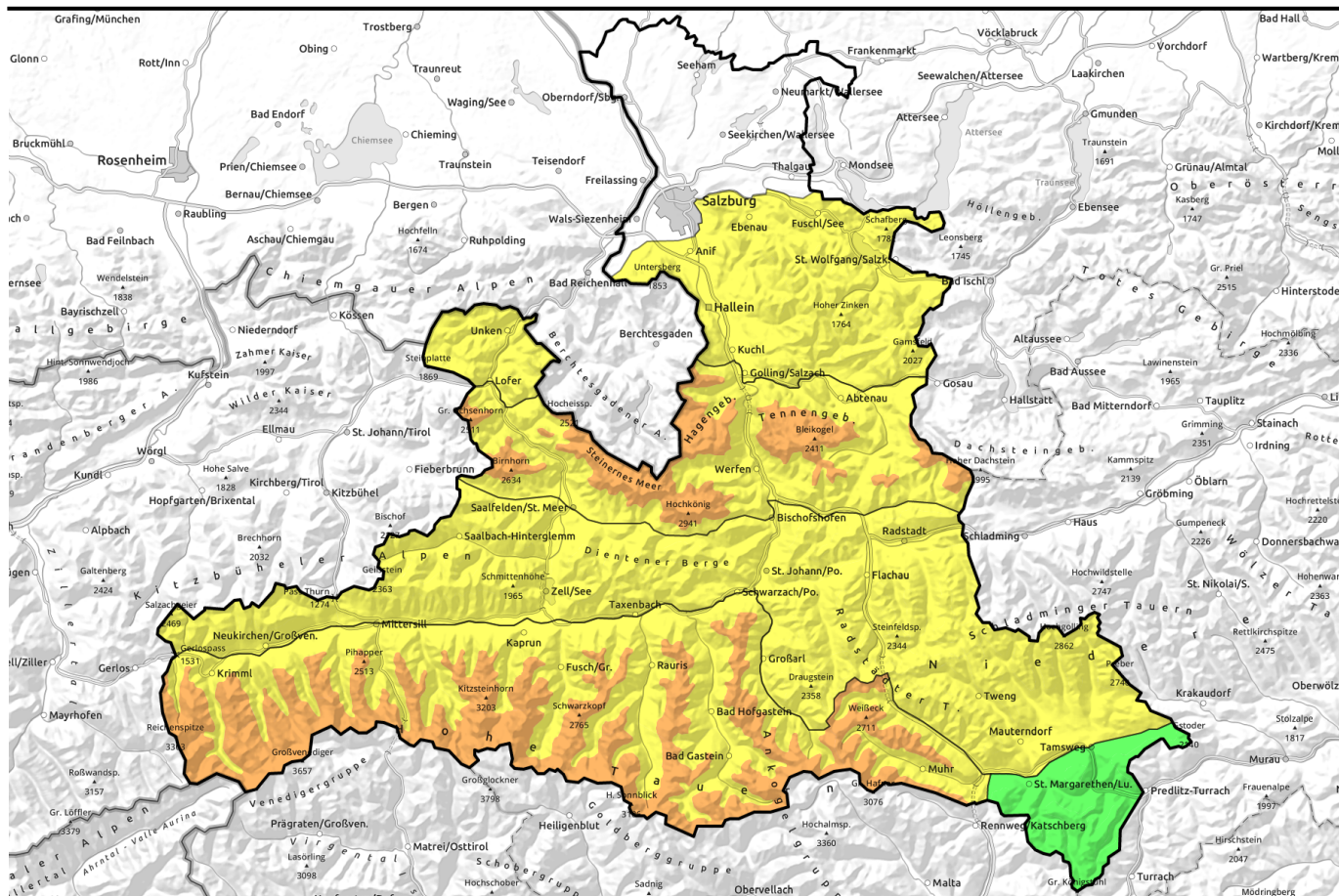


09.04.2021



Sunshine, warmth, southerly foehn

	<p>2400 m Steinernes Meer, Hochkönig, Hagengebirge, Göllstock, Tennengebirge, Gosaukamm, Großvenedigergruppe Nord, Glocknergruppe Nord, Goldberggruppe Nord, Großvenedigergruppe Alpenhauptkamm, Glocknergruppe Alpenhauptkamm, Goldberggruppe Alpenhauptkamm, Ankogelgruppe, Muhr, Loferer und Leoganger Steinberge</p>	
	<p>Nockberge</p>	
	<p>Osterhorngruppe, Gamsfeldgruppe, Untersbergstock, Chiemgauer Alpen, Heutal, Reiteralpe, Kitzbüheler Alpen, Glemmtal, Oberpinzgauer Grasberge, Dientner Grasberge, Pongauer Grasberge, Niedere Tauern Nord, Niedere Tauern Alpenhauptkamm, Niedere Tauern Süd</p>	

Avalanche problems



Danger ratings

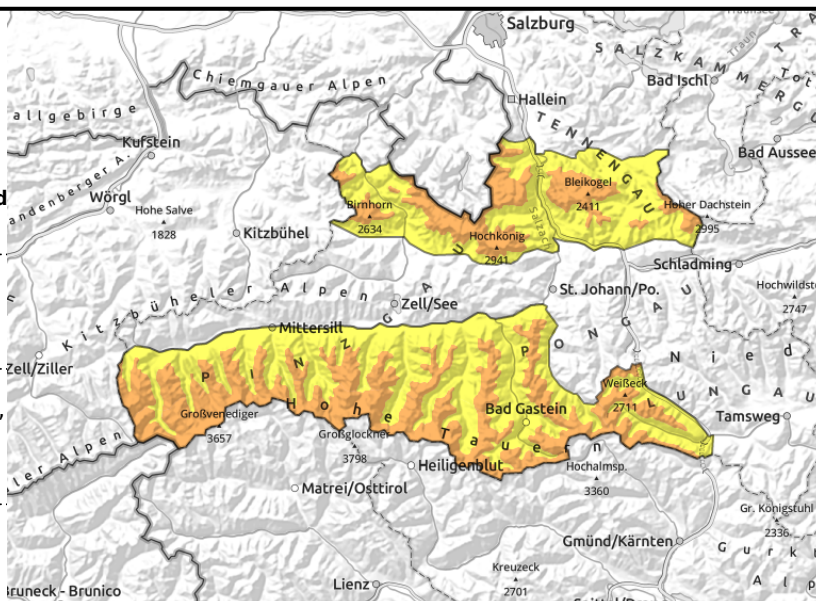


Expositions



09.04.2021

Steinernes Meer, Hochkönig, Hagengebirge, Göllstock, Tennengebirge, Gosaukamm, Großvenedigergruppe Nord, Glocknergruppe Nord, Goldberggruppe Nord, Großvenedigergruppe Alpenhauptkamm, Glocknergruppe Alpenhauptkamm, Goldberggruppe Alpenhauptkamm, Ankogelgruppe, Muhr, Loferer und Leoganger Steinberge



near to and distant from ridges, behind protruberances: soft, easily triggered snowdrifts



impulse from warmth, daytime cycle of naturally triggered avalanches

Snowpack more prone to triggering with ascending altitude

Avalanche danger above 2400 m is CONSIDERABLE, below that altitude MODERATE. Two problems threaten:

1. Snowdrift threat: avalanche prone locations primarily above the treeline behind protruberances near to and distant from ridgelines in steep N-E-S aspects and in steep gullies in all aspects. Proneness to triggering increases with ascending altitude, in high/high-alpine regions even the weight of one single skier is sufficient to release a small-to-medium slab avalanche. Most treacherous of all: extended eastern aspects where isolated naturally triggered medium-sized slab avalanches are possible.
2. Daytime loss of firmness: on sun-drenched steep rocky slopes, naturally triggered small-to-medium sized (wet) loose-snow avalanches are possible. On very steep grassy slopes below about 1800 m, also naturally triggered small-to (in isolated cases) medium sized glide-snow avalanches are possible.

Snowpack structure

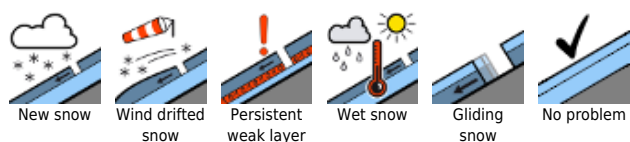
The fresh snow of recent days (20-40 cm widespread, 60-70 cm in barrier cloud regions) has settled somewhat and is moistened at least superficially up to altitudes of 2000 m. At high altitudes there is still trigger-sensitive snowdrift (deposited atop a loosely-packed base) which was formed by storm-strength W/N winds and has settled somewhat. At low and intermediate altitudes, the warmth and melt-water seepage has caused a loss of firmness in the fresh snow. On very steep slopes (and at the beginning of the week, already snow-bare slopes) the fresh snow is gliding away as a mass.

Weather

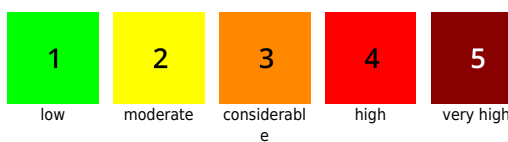
On Friday, initially sunny weather with good visibility. Starting at midday, high-altitude cloudbanks will pass through, visibility can become diffuse. In the Tauern, southerly foehn wind will be blowing (40-50 km/hr), in the Northern Alps the winds will be moderately strong. Warmth is anticipated at all altitudes. At 2000 m: -3 to +2 degrees; at 3000 m: -8 to -5 degrees.

On Saturday, following a night of variably cloud skies, initially rather overcast. Starting at midday, sunny. Foehn-influence will continue, amid similar temperatures.

Avalanche problems



Danger ratings



Expositions

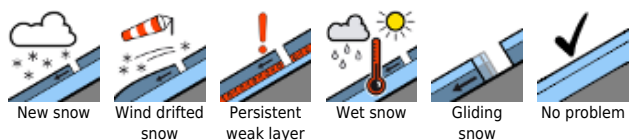


09.04.2021

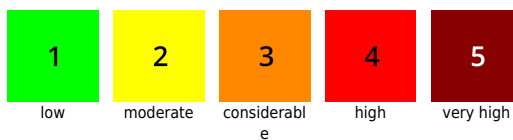
Outlook

On Saturday, caution urged towards foehn-induced snowdrifts on north-facing slopes. Elsewhere the trigger-sensitivity of snowdrifts will recede. At intermediate altitudes, daytime cycle of naturally triggered avalanches.

Avalanche problems



Danger ratings



Expositions



09.04.2021

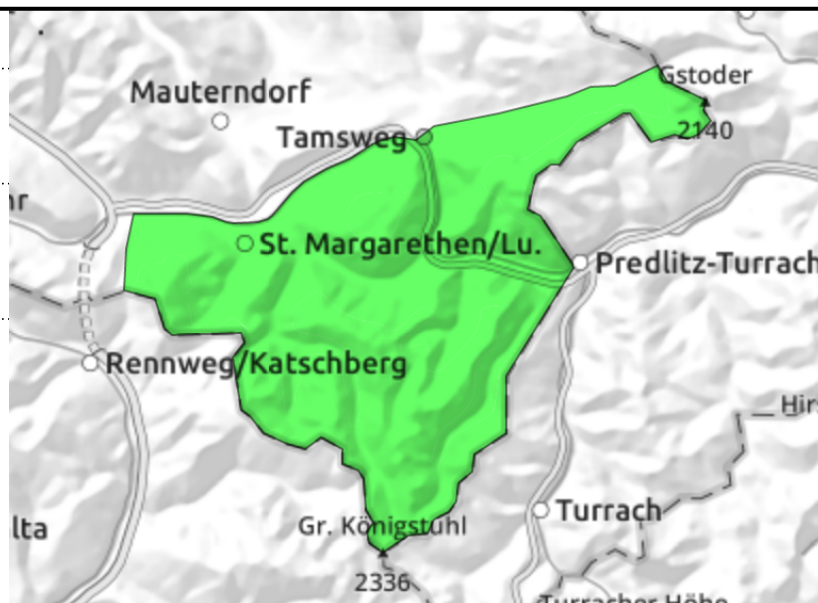
Nockberge



isolated avalanche prone locations behind protruberances and in gullies



small, superficial loose-snow avalanches on very steep sunny slopes



Small danger zones due to snowdrifts, small naturally triggered loose-snow avalanches

Avalanche danger is LOW. Only isolated avalanche prone locations exist for mostly small, dry-snow slabs behind very steep protruberances and in gullies. There, triggering an avalanche can force a fall. Superficial naturally triggered (wet) loose-snow avalanches are possible in sun-drenched steep terrain, they will remain small-sized.

Snowpack structure

Well-settled, compact old snowpack. In wind-protected terrain, only a few centimetres of fresh snow on top of this. In wind-exposed zones, intermittently strong-velocity NW winds transported the snow, depositing thin drifts on leeward slopes. Solar radiation and daytime warmth will moisten the snowpack's upper layers.

Weather

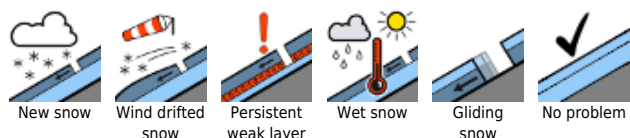
On Friday, sunny weather will initially dominate, with good visibility. Starting at midday, high-altitude cloudbanks will increase, visibility can become diffuse. A foehn-induced southerly wind will arise (30-50 km/hr). Warmth is anticipated at all altitudes. At 2000 m: -5 to +1 degree.

On Saturday, following a night of variably cloudy skies, initially rather overcast. Starting at midday it will turn sunny. Foehn wind influence will continue, with similar temperatures.

Outlook

On Saturday, caution urged towards foehn-induced snowdrifts on north-facing slopes (small danger zones, easily recognized). Hardened surfaces at intermediate altitude will turn to firm snow with the sunshine.

Avalanche problems



Danger ratings

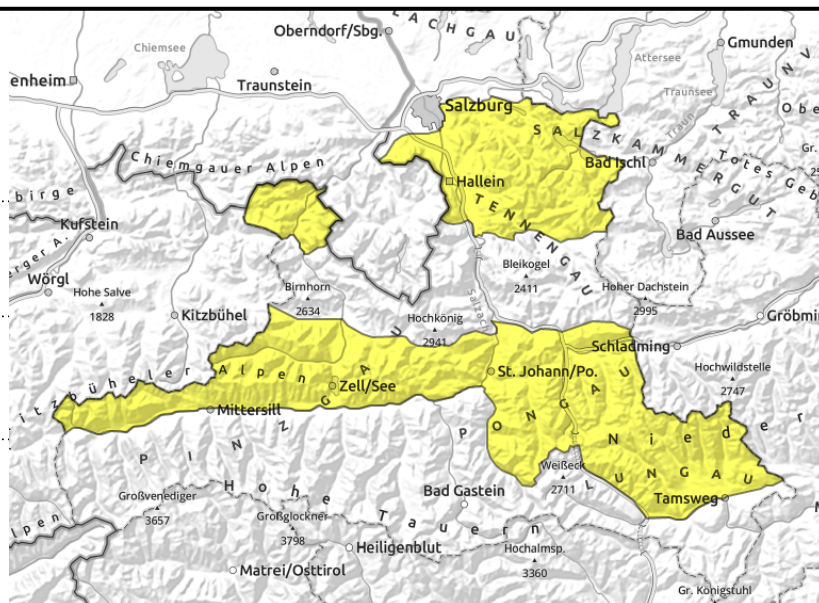


Expositions



09.04.2021

Osterhorngruppe, Gamsfeldgruppe, Untersbergstock, Chiemgauer Alpen, Heutal, Reiteralpe, Kitzbüheler Alpen, Glemmtal, Oberpinzgauer Grasberge, Dientner Grasberge, Pongauer Grasberge, Niedere Tauern Nord, Niedere Tauern Alpenhauptkamm, Niedere Tauern Süd



warmth impulse: powerful



behind protruberances, in gullies, steep bowls

Daytime loss of snowpack firmness, avoid high-altitude snowdrifts

Avalanche danger above 2400 m is MODERATE. Two problems threaten:

1. Snowdrift threat: avalanche prone locations primarily above the treeline behind protruberances near to and distant from ridgelines in steep N-E-S aspects and in steep gullies in all aspects. Proneness to triggering increases with ascending altitude, in high/high-alpine regions even the weight of one single skier is sufficient to release a small-to-medium slab avalanche. Most treacherous of all: extended eastern aspects.
2. Daytime loss of firmness: on sun-drenched steep rocky slopes, naturally triggered small-to-medium sized (wet) loose-snow avalanches are possible. On very steep grassy slopes below about 1800 m, also naturally triggered small-to (in isolated cases) medium sized glide-snow avalanches are possible.

Snowpack structure

The fresh snow of recent days (20-40 cm widespread, 60-70 cm in barrier cloud regions) has settled somewhat and is moistened at least superficially up to altitudes of 2000 m. At high altitudes there is still trigger-sensitive snowdrift (deposited atop a loosely-packed base) which was formed by storm-strength W/N winds and has settled somewhat. At low and intermediate altitudes, the warmth and melt-water seepage has caused a loss of firmness in the fresh snow. On very steep slopes (and at the beginning of the week, already snow-bare slopes) the fresh snow is gliding away as a mass.

Weather

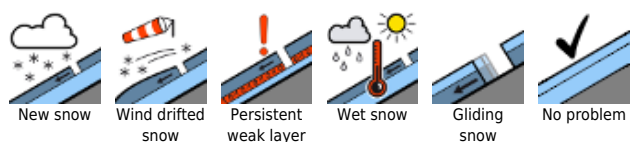
On Friday, initially sunny weather with good visibility. Starting at midday, high-altitude cloudbanks will pass through, visibility can become diffuse. In the Tauern, southerly foehn wind will be blowing (40-50 km/hr), in the Northern Alps the winds will be moderately strong. Warmth is anticipated at all altitudes. At 2000 m: -3 to +2 degrees; at 3000 m: -8 to -5 degrees.

On Saturday, following a night of variably cloudy skies, initially rather overcast. Starting at midday it will turn sunny. Foehn wind influence will continue, with similar temperatures.

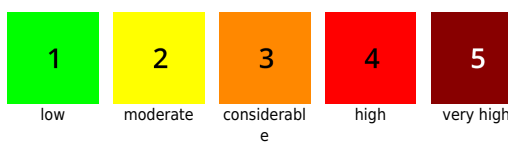
Outlook

On Saturday, foehn-induced snowdrifts require caution in the Tauern region, elsewhere the trigger-sensitivity of snowdrifts will recede. At intermediate altitudes, daytime cycle of naturally triggered

Avalanche problems



Danger ratings



Expositions



09.04.2021

avalanches.

Translated by Jeffrey McCabe, www.creativtrans.com

Avalanche problems



New snow



Wind drifted
snow



Persistent
weak layer



Wet snow



Gliding
snow



No problem

Danger ratings



1

low



2

moderate



3

considerabl
e



4

high



5

very high

Expositions

