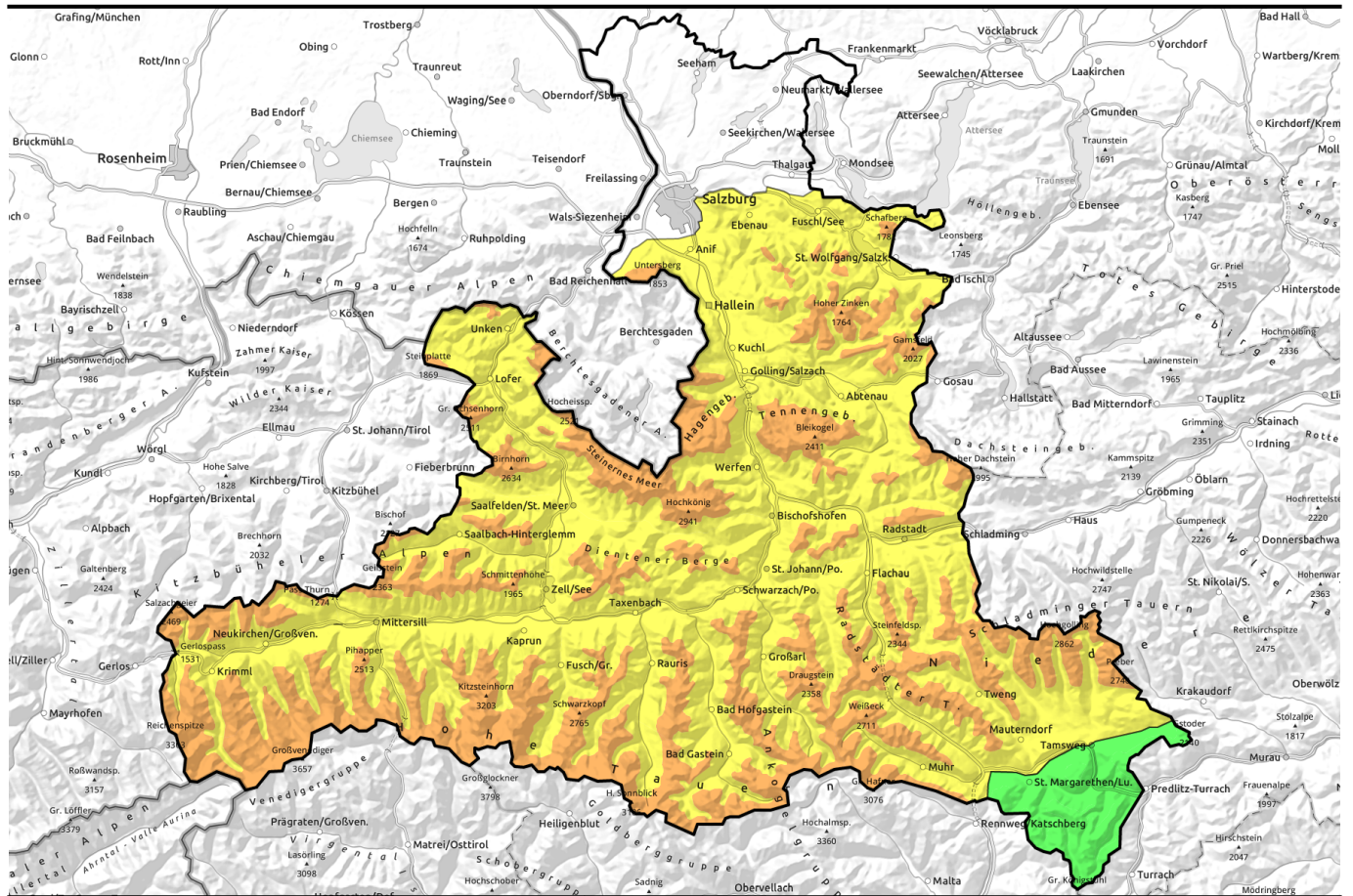


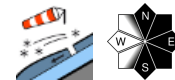
08.04.2021



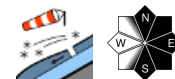
Wind-impacted fresh snow atop a loosely-packed snowbase



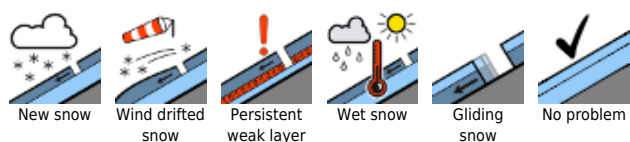
Loferer und Leoganger Steinberge, Steinernes Meer, Hochkönig, Hagengebirge, Göllstock, Tennengebirge, Gosaukamm, Oberpinzgauer Grasberge, Kitzbüheler Alpen, Glemmtal, Dientner Grasberge, Pongauer Grasberge, Großvenedigergruppe Nord, Glocknergruppe Nord, Goldberggruppe Nord, Niedere Tauern Nord, Großvenedigergruppe Alpenhauptkamm, Glocknergruppe Alpenhauptkamm, Goldberggruppe Alpenhauptkamm, Niedere Tauern Alpenhauptkamm, Ankogelgruppe, Muhr, Niedere Tauern Süd, Chiemgauer Alpen, Reiteralpe, Untersbergstock, Osterhorngruppe, Gamsfeldgruppe



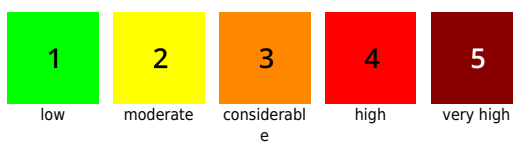
Nockberge



Avalanche problems



Danger ratings

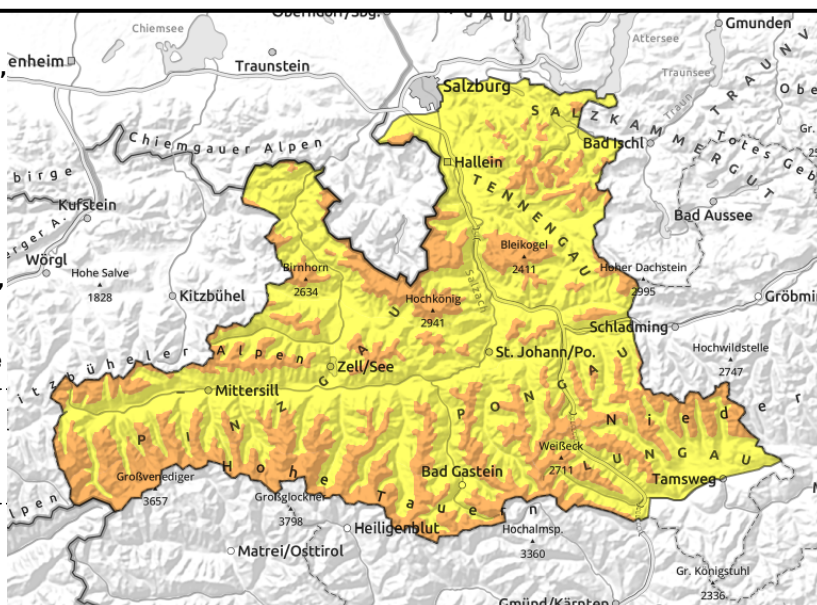


Expositions



08.04.2021

Loferer und Leoganger Steinberge, Steinernes Meer, Hochkönig, Hagengebirge, Göllstock, Tennengebirge, Gosaukamm, Oberpinzgauer Grasberge, Kitzbüheler Alpen, Glemmtal, Dientner Grasberge, Pongauer Grasberge, Großvenedigergruppe Nord, Glocknergruppe Nord, Goldberggruppe Nord, Niedere Tauern Nord, Großvenedigergruppe Alpenhauptkamm, Glocknergruppe Alpenhauptkamm, Goldberggruppe Alpenhauptkamm, Niedere Tauern Alpenhauptkamm, Ankogelgruppe, Muhr, Niedere Tauern Süd, Chiemgauer Alpen, Heutal, Reiteralpe, Untersbergstock, Osterhorngruppe, Gamsfeldgruppe



forestline



near to and distant from ridgelines, behind protruberances, soft and easily triggered snowdrifts

Danger zones becoming more frequent with ascending altitude

Avalanche danger above the treeline is CONSIDERABLE, below that altitude MODERATE. Danger zones from fresh snowdrifts occur near to and distant from ridgelines behind protruberances in N-E-S facing aspects in steep terrain and in steep gullies of all aspects. Triggering a small-to-medium slab avalanche is possible even by the weight of one single skier. The frequency of avalanche prone locations increases with ascending altitude.

On sun-drenched, rocky steep slopes, naturally triggered small-sized loose-snow avalanches are possible.

Snowpack structure

Atop a well-settled old snowpack which is blanketed widespread by a melt-freeze crust, there is now 20-40 cm of cold, fresh snow deposited, up to 60 cm in barrier cloud regions of the Hohe Tauern and Northern Alps, riddled with graupel. Due to the showerlike quality of the precipitation and wind influence, distribution of the snow is highly varied. The latest snowfall is bonded and prone to triggering atop the loosely-packed base. Above the timberline, strong-to-storm strength westerly to northwesterly winds have transported the snow widely.

Weather

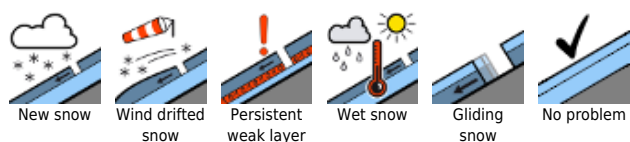
Visibility on Thursday will be starkly limited by snowfall and heavy cloud into the morning hours, particularly in the Northern Alps. Gradually, visibility is expected to improve; in the afternoon, conditions will be dry, sunshine is expected to be more prevalent. Winds will initially be brisk from west to northwest, later on they will slacken off. Temperatures will be slightly higher: at 2000 m, -6 degrees; at 3000 m, -12 degrees.

On Friday, sunny, good visibility, some southerly foehn wind is possible in the Tauern region. Temperatures rising noticeably. Zero-degreere level will approach 2200 m.

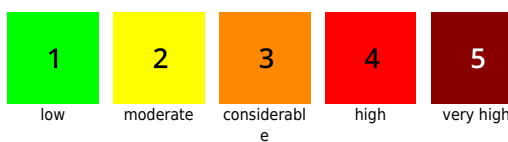
Outlook

On Friday, strong settling impulse due to daytime warmth and solar radiation. Along the Tauern the southerly foehn wind will transport the snow and generate further avalanche prone locations on north-

Avalanche problems



Danger ratings



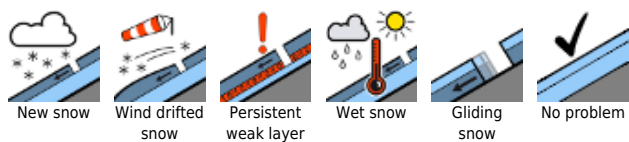
Expositions



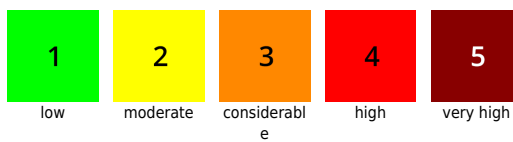
08.04.2021

facing slopes.

Avalanche problems



Danger ratings



Expositions

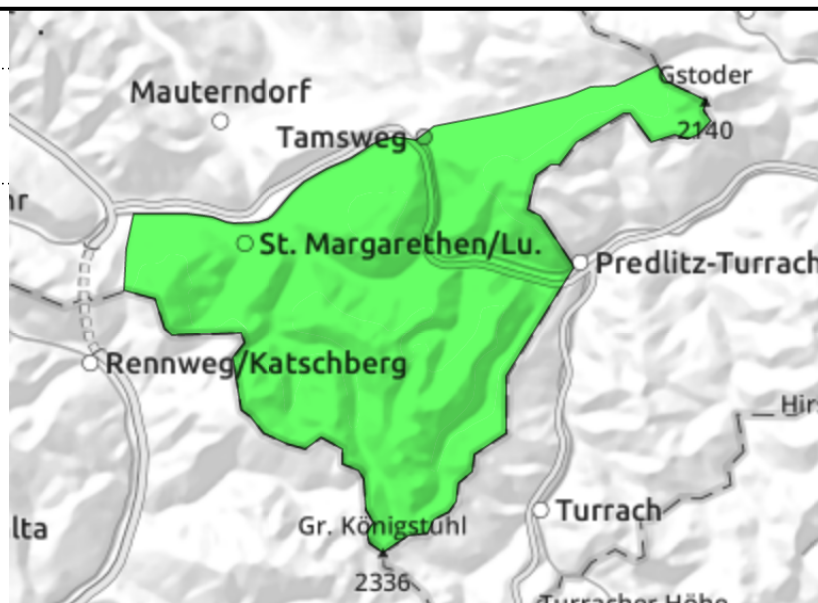


08.04.2021

Nockberge



isolated avalanche prone locations behind protruberances, in gullies



Windy and cold. Isolated danger zones.

Avalanche danger is LOW. Only isolated avalanche prone locations for generally small, dry-snow slab avalanches behind very steep protruberances and in gullies. Triggering a snowdrift patch could lead to forcing a fall.

Snowpack structure

Well-settled, compact old snowpack, a few centimetres of fresh snow in the wind-protected zones. In wind-exposed zones, strong NW winds have transported the fresh snow to leeward slopes and generated thin snowdrifts.

Weather

Amid brisk to strong NW winds (40-50 km/hr) clouds and sunshine will alternate, but it is expected to remain free of precipitation. At 2000 m, between -10 and -7 degrees.

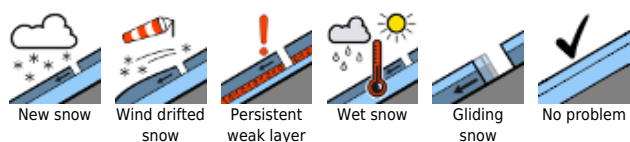
On Friday, sunny, some high-altitude clouds passing through. Intensifying southerly winds during the day. Warmer: at midday: 0 degrees at 2000 m.

Outlook

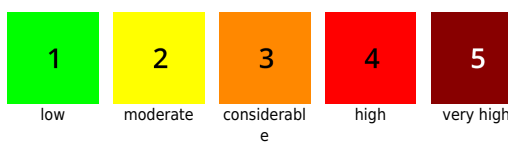
On Friday, superficial loose-snow slides expected on sunny slopes due to daytime warmth. Otherwise, little change.

Translated by Jeffrey McCabe, www.creativtrans.com

Avalanche problems



Danger ratings



Expositions

