

## Moderate snowdrift problem



forestline

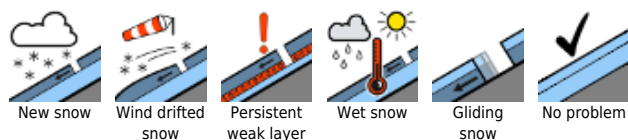
Loferer und Leoganger Steinberge, Steinernes Meer, Hochkönig, Hagengebirge, Göllstock, Tennengebirge, Gosaukamm, Oberpinzgauer Grasberge, Kitzbüheler Alpen, Glemmtal, Dientner Grasberge, Pongauer Grasberge, Großvenedigergruppe Nord, Glocknergruppe Nord, Goldberggruppe Nord, Niedere Tauern Nord, Großvenedigergruppe Alpenhauptkamm, Glocknergruppe Alpenhauptkamm, Goldberggruppe Alpenhauptkamm, Niedere Tauern Alpenhauptkamm, Ankogelgruppe, Muhr, Niedere Tauern Süd, Chiemgauer Alpen, Reiteralpe, Untersbergstock, Osterhorngruppe, Gamsfeldgruppe



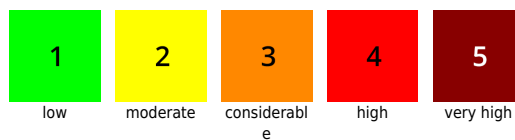
Nockberge



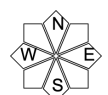
### Avalanche problems



### Danger ratings

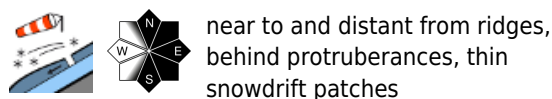
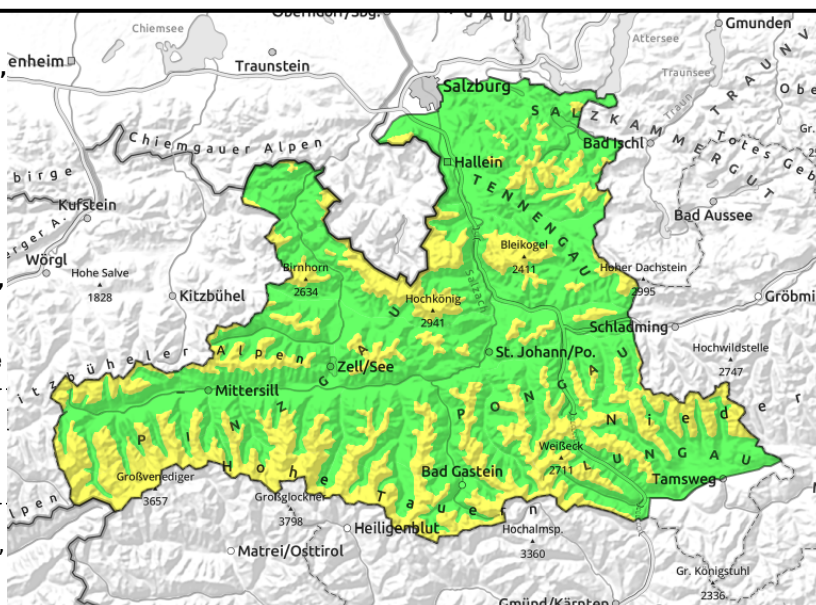


### Expositions



**07.04.2021**

Loferer und Leoganger Steinberge, Steinernes Meer, Hochkönig, Hagengebirge, Göllstock, Tennengebirge, Gosaukamm, Oberpinzgauer Grasberge, Kitzbüheler Alpen, Glemmtal, Dientner Grasberge, Pongauer Grasberge, Großvenedigergruppe Nord, Glocknergruppe Nord, Goldberggruppe Nord, Niedere Tauern Nord, Großvenedigergruppe Alpenhauptkamm, Glocknergruppe Alpenhauptkamm, Goldberggruppe Alpenhauptkamm, Niedere Tauern Alpenhauptkamm, Ankogelgruppe, Muhr, Niedere Tauern Süd, Chiemgauer Alpen, Heutal, Reiteralpe, Untersbergstock, Osterhorngruppe, Gamsfeldgruppe



## Fresh snow, storm-strength NW winds

Avalanche danger above the treeline is MODERATE, below that altitude danger is LOW. Fresh snowdrift patches or a small-to-medium slab can be triggered from behind protruberances (near to and distant from ridgelines) in N-E-S aspects in steep terrain even by the weight of a single skier in some places. Also in gullies and bowls in all aspects the snowdrifts are accumulating. Frequency of avalanche prone locations increase in frequency with ascending altitude.

In wind-protected zones, conditions are good. Atop a hard base there is fine powder snow. Snowdrifts are easily recognized (visibility permitting) and should be circumvented. In sunny phases, small loose-snow slides are possible in extremely steep terrain.

## Snowpack structure

Atop a well-settled snowpack which is sealed by a melt-freeze crust there are 10-30 cm of loose, cold, dry powder deposited which in some places has been / is being transported by winds. A potential weak layer for a slab avalanche: the border to the old snowpack or a layer border to the fresh snow.

## Weather

On Wednesday, visibility will often be limited by fog and clouds, a few snow showers and graupel showers will pass through (minor, about 5 cm). At midday, it will be dry, sunshine will prevail for awhile. In the evening more snowfall is anticipated (about 20 cm). Strong-to-stormy W/NW winds will prevail. Cold: temperature at 1500 m, -8 degrees; at 2000 m, -12 degrees; at 3000 m, -20 degrees.

## Outlook

On Wednesday evening, intensive snowfall, lots of wind will continue. On Thursday, quite sunny, slightly higher temperatures. First strong settling impulses.

### Avalanche problems



### Danger ratings

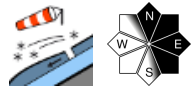


### Expositions

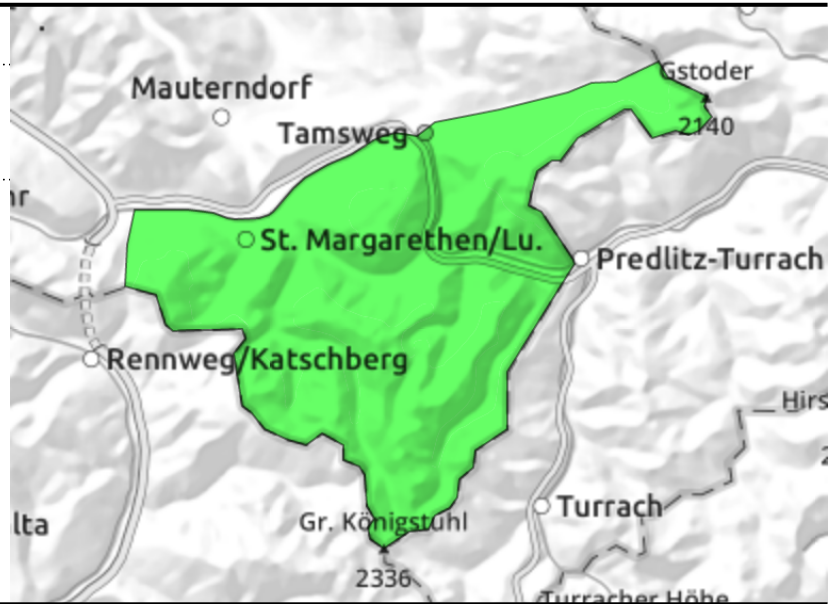


07.04.2021

Nockberge



isolated avalanche prone locations



**Favourable situation, but windy and cold**

Avalanche danger is LOW. Hardly any avalanche prone locations. In extremely steep terrain, snowdrift patches can be triggered and force a fall.

**Snowpack structure**

Well settled snowpack, some fresh snow / snowdrifts atop it, mostly well bonded with the layers below.

**Weather**

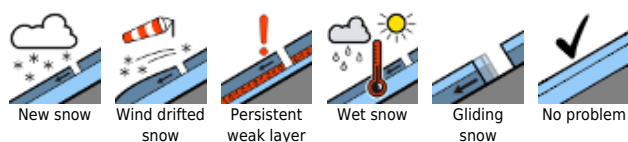
Strong-velocity NW winds. Visibility adequate. Clouds passing through. Intermittent sunshine. At 2000 m: 12 degrees.

**Outlook**

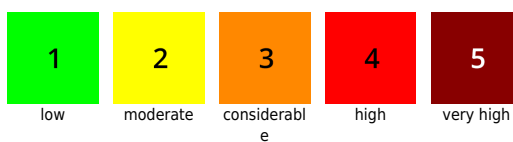
Little change

Translated by Jeffrey McCabe, [www.creativtrans.com](http://www.creativtrans.com)

**Avalanche problems**



**Danger ratings**



**Expositions**

