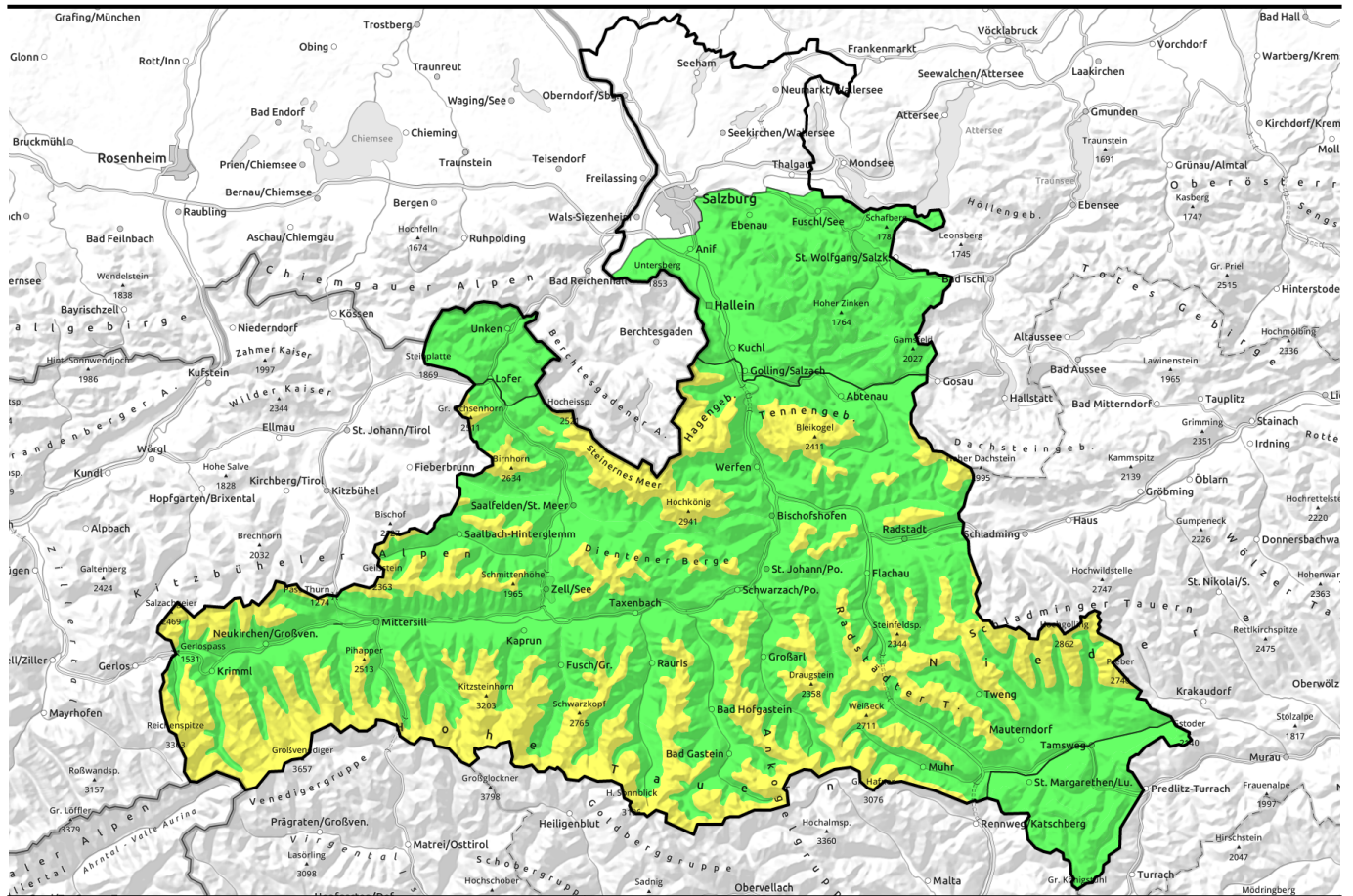


06.04.2021



Moderate snowdrift problem



1800 m

Loferer und Leoganger Steinberge, Steinernes Meer, Hochkönig, Hagengebirge, Göllstock, Tennengebirge, Gosaukamm, Oberpinzgauer Grasberge, Kitzbüheler Alpen, Glemmtal, Dientner Grasberge, Pongauer Grasberge, Großvenedigergruppe Nord, Glocknergruppe Nord, Goldberggruppe Nord, Niedere Tauern Nord, Großvenedigergruppe Alpenhauptkamm, Glocknergruppe Alpenhauptkamm, Goldberggruppe Alpenhauptkamm, Niedere Tauern Alpenhauptkamm, Ankogelgruppe, Muhr, Niedere Tauern Süd



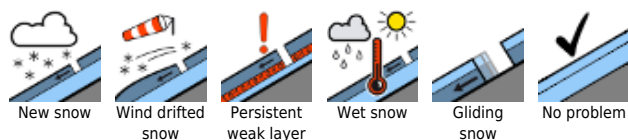
Nockberge



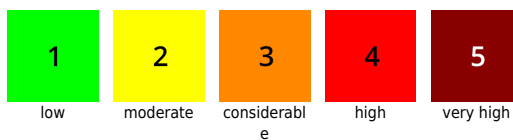
Chiemgauer Alpen, Heutal, Reiteralpe, Untersbergstock, Osterhorngruppe, Gamsfeldgruppe



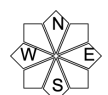
Avalanche problems



Danger ratings

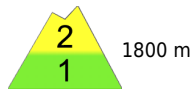
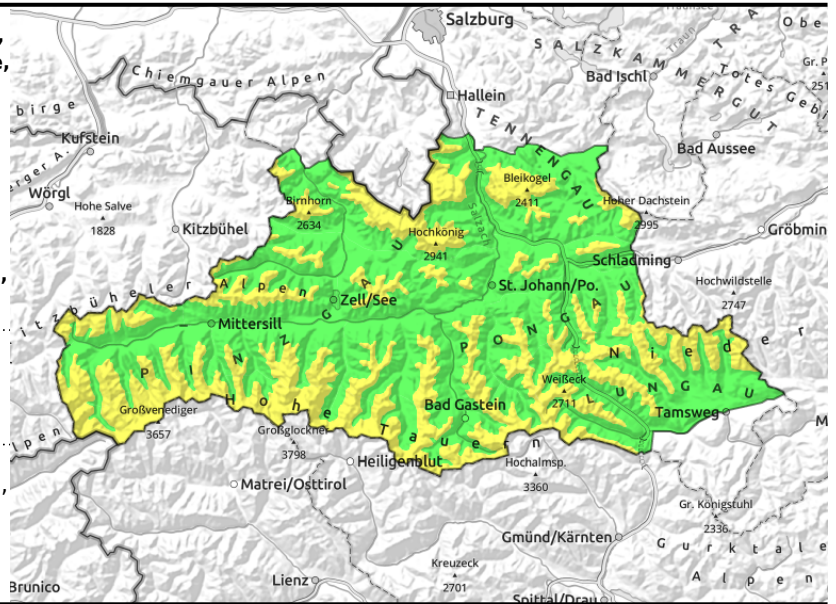


Expositions



06.04.2021

Loferer und Leoganger Steinberge, Steinernes Meer, Hochkönig, Hagengebirge, Göllstock, Tennengebirge, Gosaukamm, Oberpinzgauer Grasberge, Kitzbüheler Alpen, Glemmtal, Dientner Grasberge, Pongauer Grasberge, Großvenedigergruppe Nord, Glocknergruppe Nord, Goldberggruppe Nord, Niedere Tauern Nord, Großvenedigergruppe Alpenhauptkamm, Glocknergruppe Alpenhauptkamm, Goldberggruppe Alpenhauptkamm, Niedere Tauern Alpenhauptkamm, Ankogelgruppe, Muhr, Niedere Tauern Süd



near to and distant from ridges, behind protruberances, thin and small snowdrifts

Some fresh snow and storm-strength NW winds

Avalanche danger above 1800 m is MODERATE, below that altitude danger is LOW. Fresh snowdrift patches or small slabs can often be triggered behind protruberances near to and distant from ridgelines (N-E-S aspects) in steep terrain be minimum additional loading. Also in gullies and bowls in all aspects, snowdrifts are accumulating. The frequency of danger zones increases with ascending altitude.

In sunny phases, small loose-snow slides are possible in extremely steep terrain.

Snowpack structure

On Monday night as the result of a cold front (temperatures plummeting) 5-15 cm of fresh snow and snowdrifts will be deposited atop a well settled old snowpack. With ascending altitude, bonding to the base deteriorates.

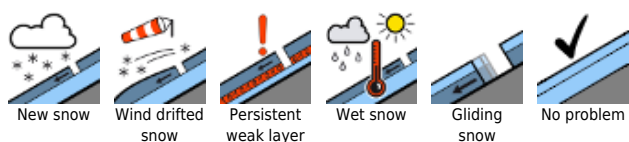
Weather

On Tuesday, the peaks will still be shrouded in clouds, only occasional sunshine is expected. In the morning, snow showers will be isolated, in the afternoon somewhat more frequent but will bring only minor amounts of snow (5 cm). A strong-to-stormy NW wind will be blowing. At 2000 m: -11 degrees; at 3000 m: -19 degrees.

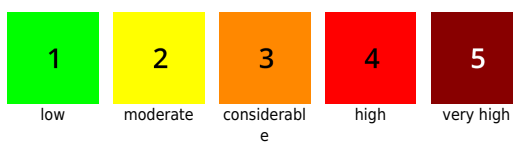
Outlook

On Wednesday the frequency of avalanche prone locations and the depths of drifts will increase.

Avalanche problems



Danger ratings

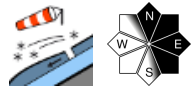


Expositions

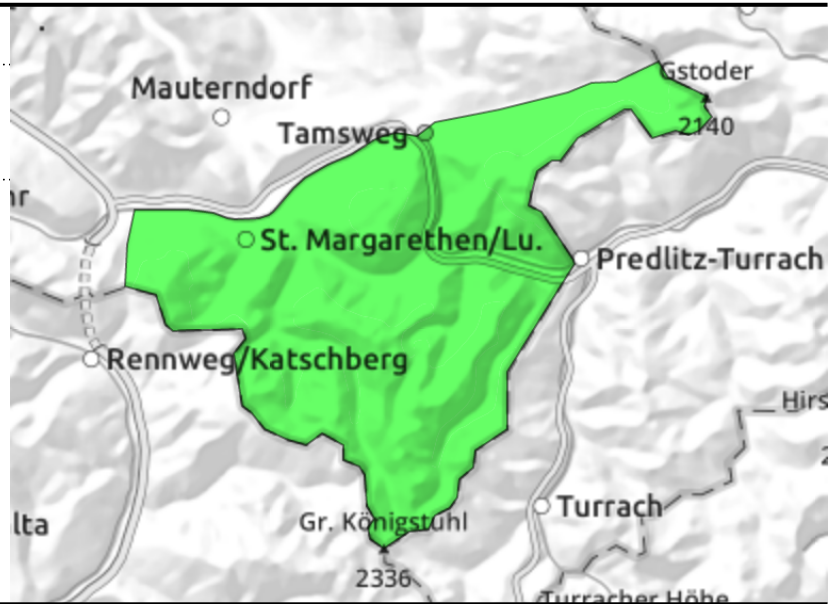


06.04.2021

Nockberge



isolated avalanche prone locations



Favourable situation but very windy

Avalanche danger is LOW. There are hardly any danger zones. In extremely steep terrain, snowdrift patches can release and cause a fall.

Snowpack structure

Well settled snowpack with a small amount of fresh snow / snowdrifts, mostly well bonded with the base.

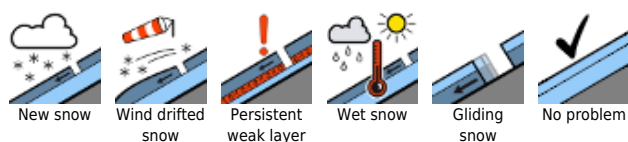
Weather

Strong, cold NW winds, adequate visibility, occasional bright intervals. At 2000 m: -12 degrees.

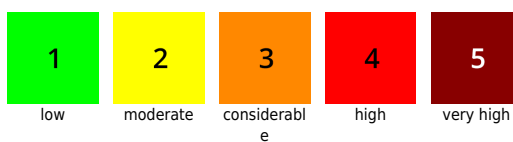
Outlook

Little change.

Avalanche problems



Danger ratings



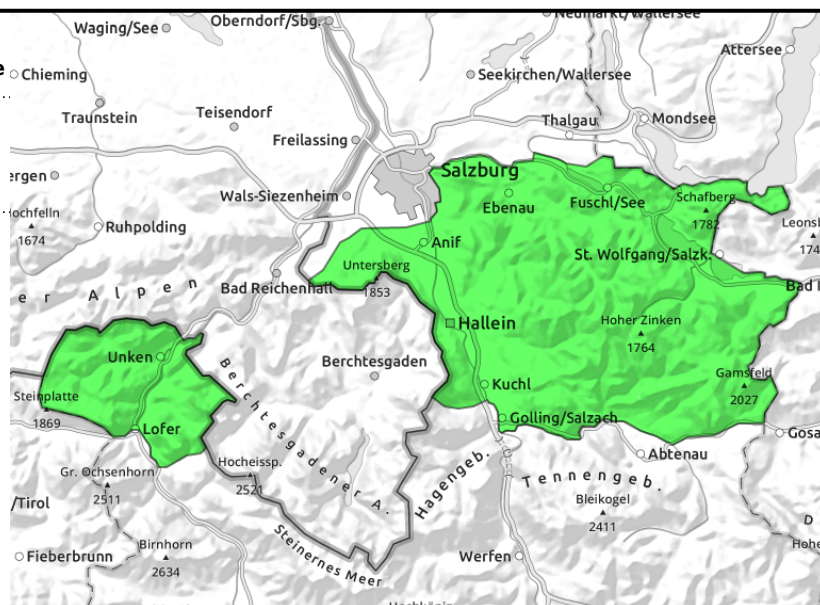
Expositions



Chiemgauer Alpen, Heutal, Reiteralpe, Untersbergstock, Osterhorngruppe, Gamsfeldgruppe



isolated avalanche prone locations



Favourable situation but very windy

Avalanche danger is LOW. There are hardly any danger zones. In extremely steep terrain, snowdrift patches can release and cause a fall.

Snowpack structure

Well settled snowpack with a small amount of fresh snow / snowdrifts, mostly well bonded with the base.

Weather

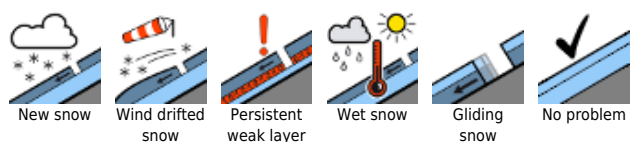
On Tuesday, the peaks will still be shrouded in clouds, only occasional sunshine is expected. In the morning, snow showers will be isolated, in the afternoon somewhat more frequent but will bring only minor amounts of snow (5 cm). A strong-to-stormy NW wind will be blowing. At 1500 m: -8 degrees.

Outlook

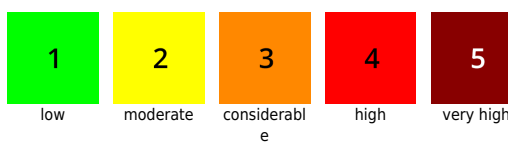
With further snowfall and wind on Wednesday, increasing avalanche danger.

Translated by Jeffrey McCabe, www.creativtrans.com

Avalanche problems



Danger ratings



Expositions

