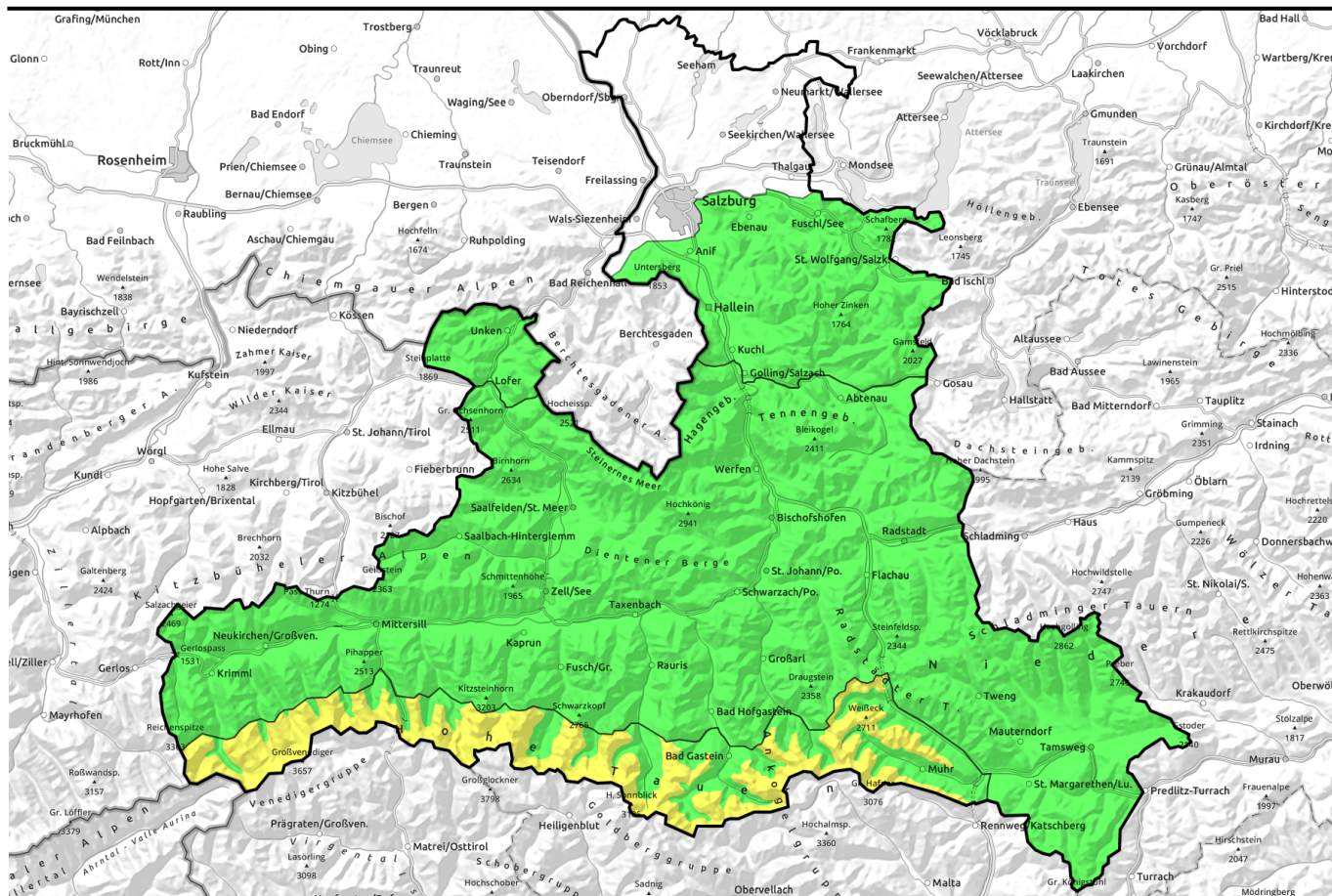


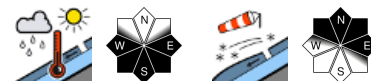
# 05.04.2021, morning



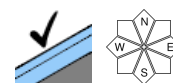
## Daytime danger cycle



Loferer und Leoganger Steinberge, Steinernes Meer, Hochkönig, Hagengebirge, Göllstock, Tennengebirge, Gosaukamm, Pongauer Grasberge, Niedere Tauern Nord, Dientner Grasberge, Kitzbüheler Alpen, Glemmtal, Oberpinzgauer Grasberge, Großvenedigergruppe Nord, Glocknergruppe Nord, Goldberggruppe Nord, Niedere Tauern Alpenhauptkamm, Niedere Tauern Süd, Nockberge



Chiemgauer Alpen, Heutal, Reiteralpe, Untersbergstock, Osterhorngruppe, Gamsfeldgruppe

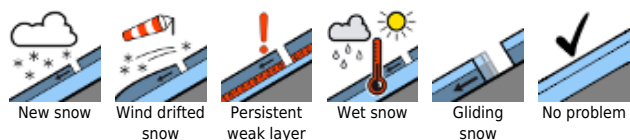


2100 m

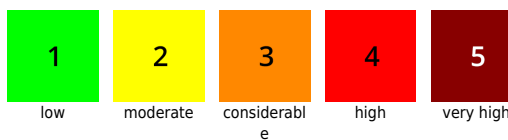
Glocknergruppe Alpenhauptkamm, Goldberggruppe Alpenhauptkamm, Ankogelgruppe, Muhr, Großvenedigergruppe Alpenhauptkamm



### Avalanche problems



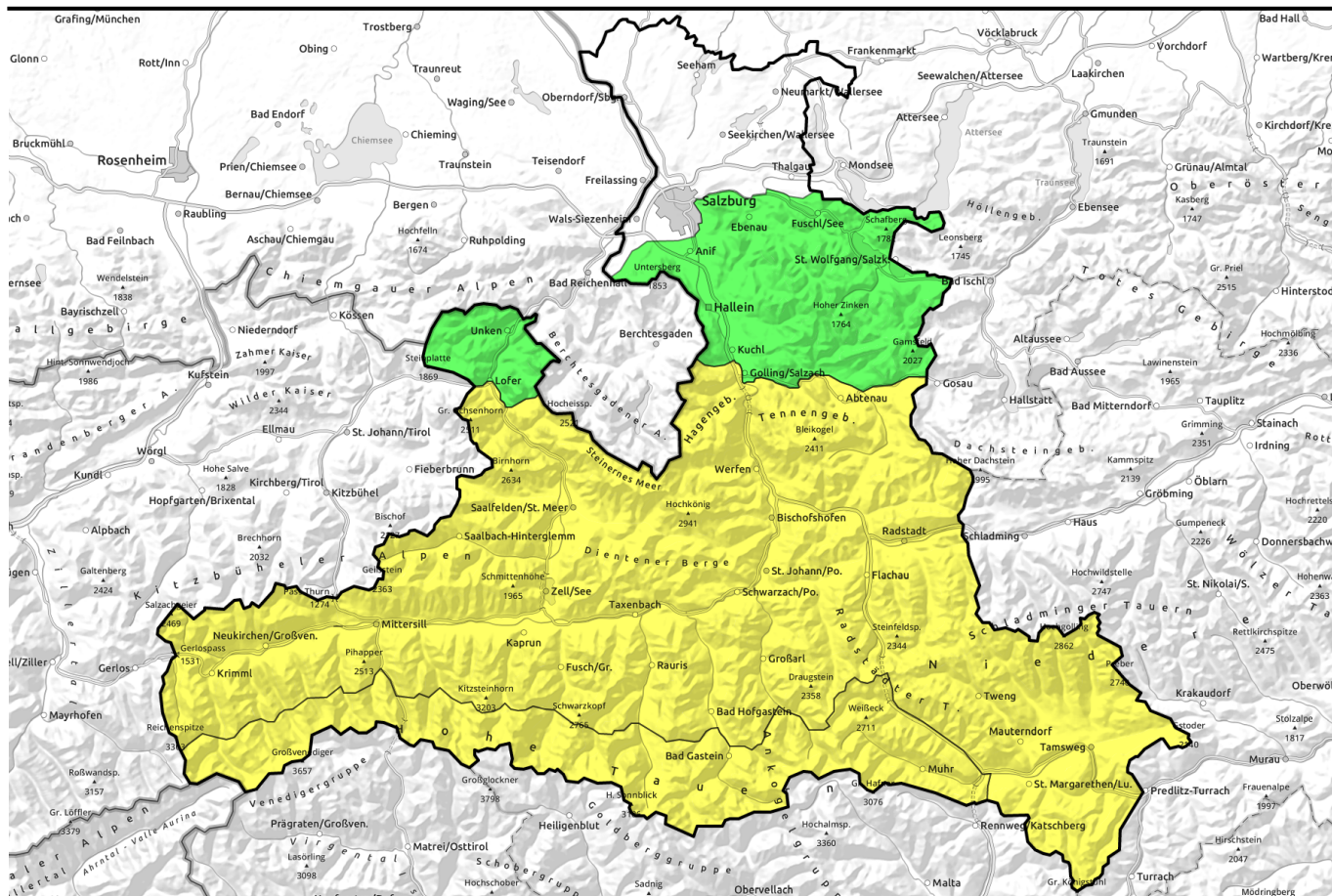
### Danger ratings



### Expositions



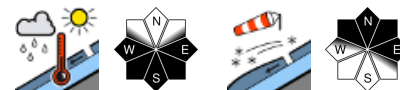
# 05.04.2021, afternoon



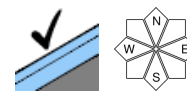
## Leichter Tagesgang



Loferer und Leoganger Steinberge, Steinernes Meer, Hochkönig, Hagengebirge, Göllstock, Tennengebirge, Gosaukamm, Pongauer Grasberge, Niedere Tauern Nord, Dientner Grasberge, Kitzbüheler Alpen, Glemmtal, Oberpinzgauer Grasberge, Großvenedigergruppe Nord, Glocknergruppe Nord, Goldberggruppe Nord, Niedere Tauern Alpenhauptkamm, Niedere Tauern Süd, Nockberge



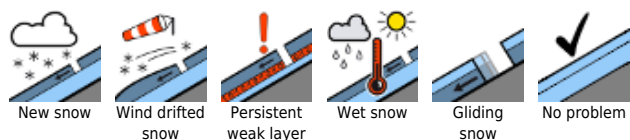
Chiemgauer Alpen, Heutal, Reiteralpe, Untersbergstock, Osterhorngruppe, Gamsfeldgruppe



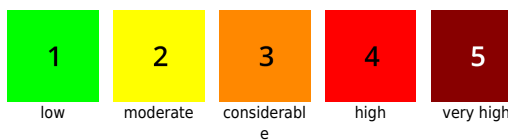
Glocknergruppe Alpenhauptkamm, Goldberggruppe Alpenhauptkamm, Ankogelgruppe, Muhr, Großvenedigergruppe Alpenhauptkamm



### Avalanche problems



### Danger ratings

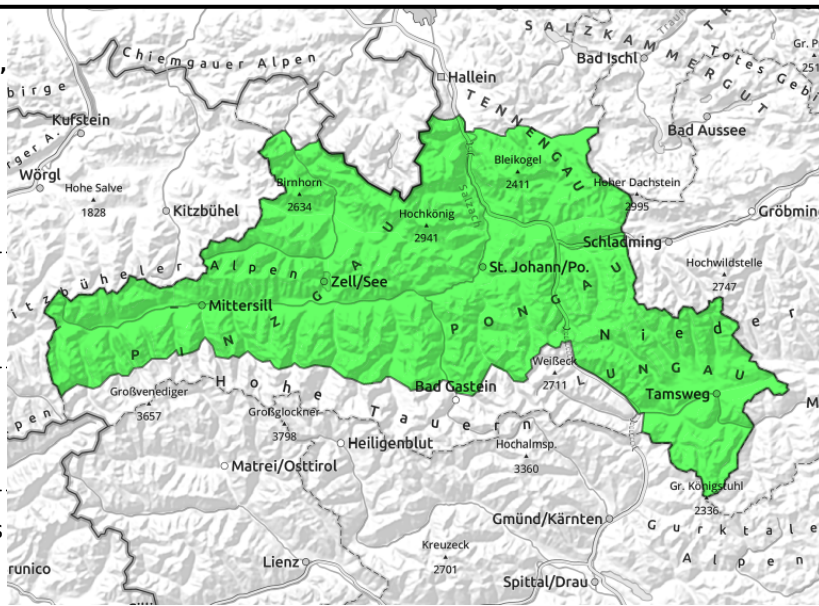


### Expositions



# 05.04.2021, morning

**Loferer und Leoganger Steinberge, Steinernes Meer, Hochkönig, Hagengebirge, Göllstock, Tennengebirge, Gosaukamm, Pongauer Grasberge, Niedere Tauern Nord, Dientner Grasberge, Kitzbüheler Alpen, Glemmtal, Oberpinzgauer Grasberge, Großvenedigergruppe Nord, Glocknergruppe Nord, Goldberggruppe Nord, Niedere Tauern Alpenhauptkamm, Niedere Tauern Süd, Nockberge**



daytime cycle of avalanche activity



thin ridgeline snowdrift patches

## Slight daytime cycle due to daytime warming

In early morning and later in morning hours, favourable conditions. In high and high-alpine regions, possible triggerings in ridgeline terrain of small snowdrift patches in extremely steep terrain. Danger of falling! Avalanche activity will increase in the course of the day. Superficial loosely-packed avalanches are triggerable naturally, also by skiers in sunny steep terrain, but will tend to remain small-sized.

Isolated glide-snow avalanches possible in steep grassy terrain.

### Snowpack structure

The snowpack is compact and stable, often encrusted with a melt-freeze layer which then softens in the daytime. At high and high-alpine altitudes, a few centimetres of powder / snowdrift can be found atop a hardened base.

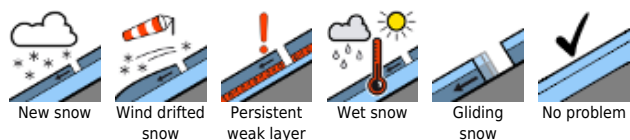
### Weather

On Monday, sunshine unhindered to begin with. In the course of the day, thin cirrus clouds will move in. In the afternoon, cloud cover will intensify. Towards evening, the higher peaks will become shrouded in fog. Temperature at 2000 m: at midday at +2 degrees, at 3000 m at -6 degrees. During the morning, winds will be light, becoming noticeable only later (westerly). In the afternoon, intensifying winds (NW-SW).

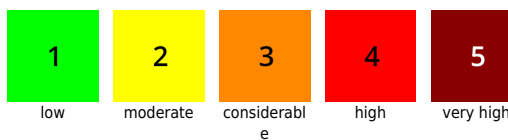
### Outlook

Winter is not yet giving up. In the coming days, a snowdrift problem will arise.

#### Avalanche problems



#### Danger ratings

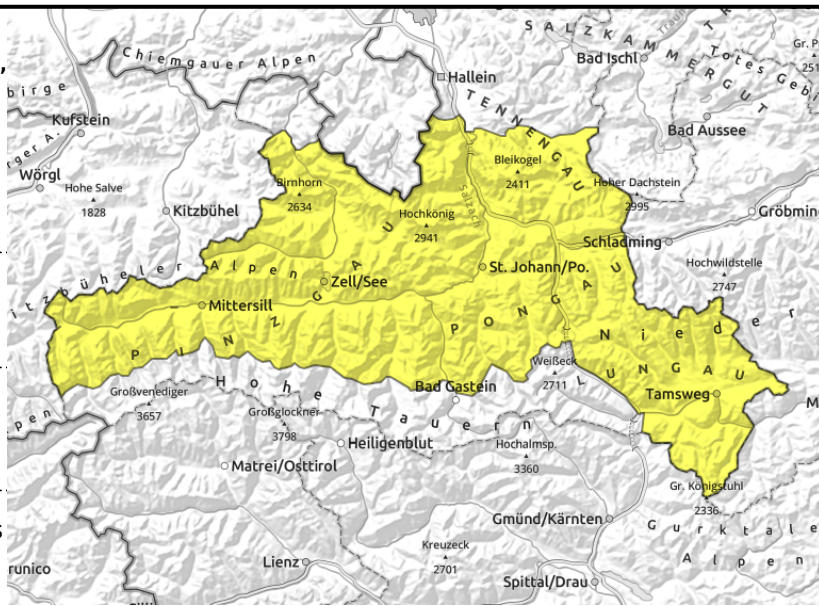


#### Expositions



# 05.04.2021, afternoon

**Loferer und Leoganger Steinberge, Steinernes Meer, Hochkönig, Hagengebirge, Göllstock, Tennengebirge, Gosaukamm, Pongauer Grasberge, Niedere Tauern Nord, Dientner Grasberge, Kitzbüheler Alpen, Glemmtal, Oberpinzgauer Grasberge, Großvenedigergruppe Nord, Glocknergruppe Nord, Goldberggruppe Nord, Niedere Tauern Alpenhauptkamm, Niedere Tauern Süd, Nockberge**



daytime cycle of avalanche activity



thin ridgeline snowdrift patches

## Slight daytime cycle due to daytime warming

In early morning and later in morning hours, favourable conditions. In high and high-alpine regions, possible triggerings in ridgeline terrain of small snowdrift patches in extremely steep terrain. Danger of falling! Avalanche activity will increase in the course of the day. Superficial loosely-packed avalanches are triggerable naturally, also by skiers in sunny steep terrain, but will tend to remain small-sized.

Isolated glide-snow avalanches possible in steep grassy terrain.

### Snowpack structure

The snowpack is compact and stable, often encrusted with a melt-freeze layer which then softens in the daytime. At high and high-alpine altitudes, a few centimetres of powder / snowdrift can be found atop a hardened base.

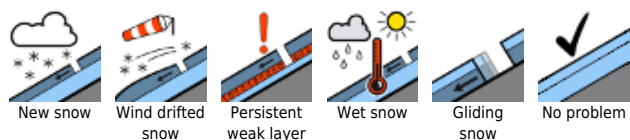
### Weather

On Monday, sunshine unhindered to begin with. In the course of the day, thin cirrus clouds will move in. In the afternoon, cloud cover will intensify. Towards evening, the higher peaks will become shrouded in fog. Temperature at 2000 m: at midday at +2 degrees, at 3000 m at -6 degrees. During the morning, winds will be light, becoming noticeable only later (westerly). In the afternoon, intensifying winds (NW-SW).

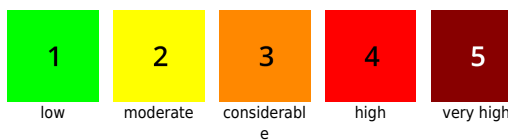
### Outlook

Winter is not yet giving up. In the coming days, a snowdrift problem will arise.

#### Avalanche problems



#### Danger ratings



#### Expositions

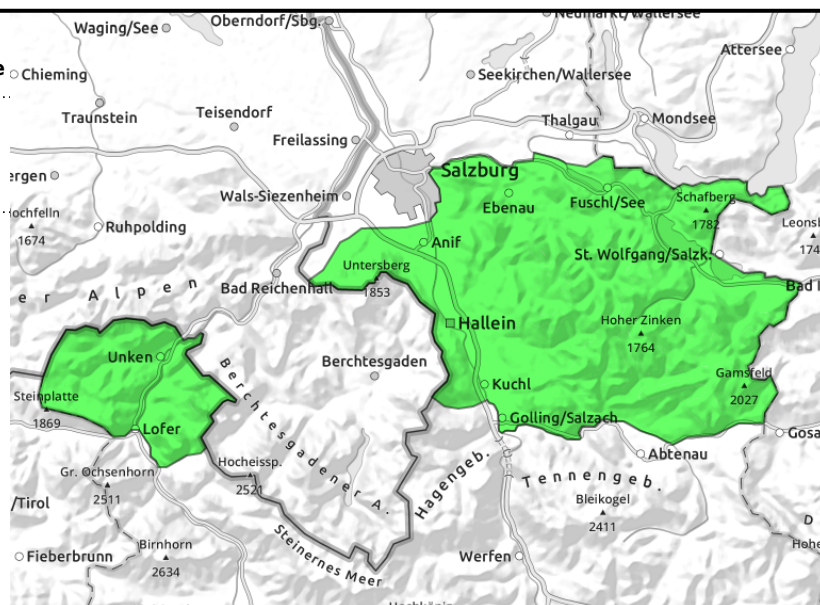


**05.04.2021**

**Chiemgauer Alpen, Heutal, Reiteralpe, Untersbergstock, Osterhorngruppe, Gamsfeldgruppe**



very few danger zones in outlying terrain



## Hardly any avalanche prone locations

Favourable conditions, little snow. Hardly any danger zones. Isolated glide-snow avalanches possible in not-yet-discharged grassy zones.

### Snowpack structure

Compact and stable snowpack, melt-freeze crust, turning to firn in the daytime

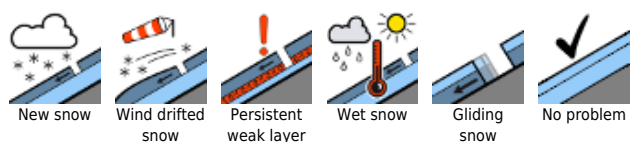
### Weather

On Monday, initially pure sunshine. Thin cirrus clouds will move in during the day. In the afternoon, cloud cover will intensify. Towards evening, the higher peaks will disappear in fog. A strong westerly wind will be blowing, intensifying to storm-strength as of midday. Temperature at 1500 m: 7 degrees at midday.

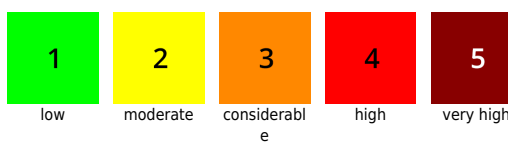
### Outlook

Winter is not yet giving up. In the coming days, a snowdrift problem will arise above the timberline.

#### Avalanche problems



#### Danger ratings





#### Expositions





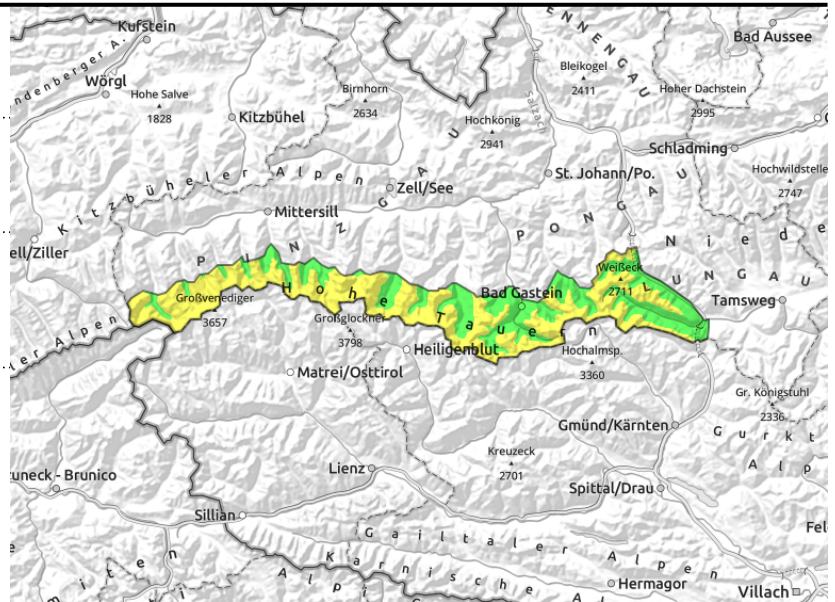
# 05.04.2021, morning

**Glocknergruppe Alpenhauptkamm, Goldberggruppe Alpenhauptkamm, Ankogelgruppe, Muhr, Großvenedigergruppe Alpenhauptkamm**



  ridgelines, triggerable in transition from shallow to deep snow

  daytime cycle of naturally triggered avalanches



## Snowdrifts in very steep terrain merit caution

As of 2100 m, MODERATE danger all day long, due to snowdrifts. Particularly near ridgelines on N-E facing slopes, small-to-medium slab avalanches can trigger by large additional loading (or by minimum additional loading in extremely-steep terrain).

During the course of the day, avalanche danger below 2100 m will increase: naturally triggered or skier-triggered avalanches are possible, most in sunny steep terrain in near-surface layers.

Isolated glide-snow avalanches in grassy terrain which has not yet discharged are possible at any time of day or night.

### Snowpack structure

Atop a relatively compact old snowpack surface there has been 15-30 cm of fresh powder registered. Strong winds have generated new drifts which in some places are 50 cm thick and can be triggered as a slab.

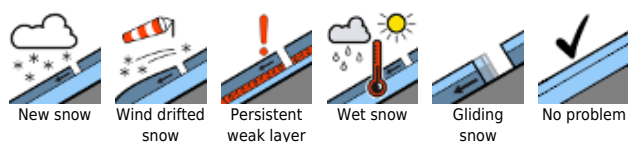
### Weather

On Monday, sunshine unhindered to start with. During the course of the day, thin cirrus clouds will move in. During the afternoon, cloud cover will intensify. Towards evening, the higher peaks will disappear in fog. Temperature at 2000 m: at midday 2 degrees; at 3000 m: -6 degrees. Westerly winds will not be very noticeable in the morning except on wind-exposed summits. Later on, brisk SW winds will prevail.

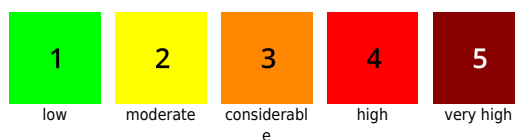
### Outlook

Winter is not yet giving up. In the coming days, a snowdrift problem will arise.

#### Avalanche problems



#### Danger ratings



#### Expositions



# 05.04.2021, afternoon

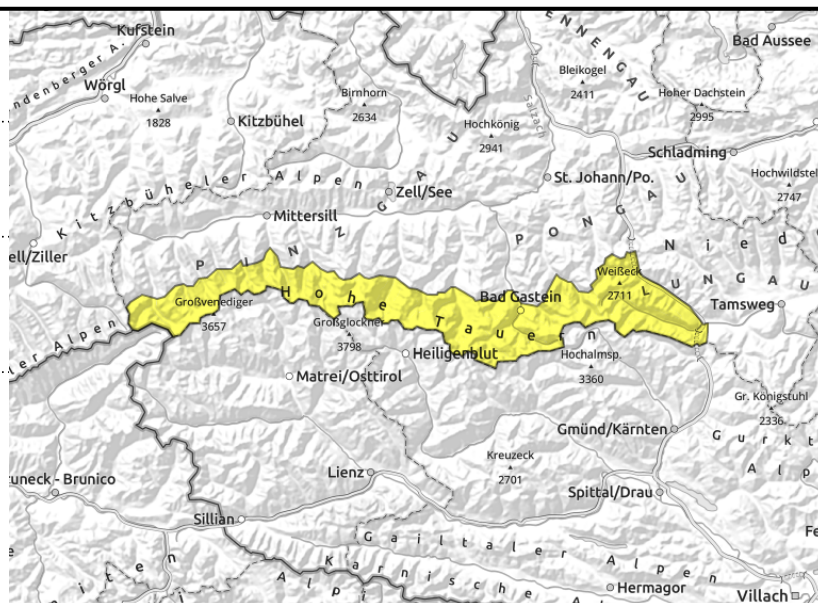
**Glocknergruppe Alpenhauptkamm, Goldberggruppe Alpenhauptkamm, Ankogelgruppe, Muhr, Großvenedigergruppe Alpenhauptkamm**



ridgelines, triggerable in transition from shallow to deep snow



daytime cycle of naturally triggered avalanches



## Snowdrifts in very steep terrain merit caution

As of 2100 m, MODERATE danger all day long, due to snowdrifts. Particularly near ridgelines on N-E facing slopes, small-to-medium slab avalanches can trigger by large additional loading (or by minimum additional loading in extremely-steep terrain).

During the course of the day, avalanche danger below 2100 m will increase: naturally triggered or skier-triggered avalanches are possible, most in sunny steep terrain in near-surface layers.

Isolated glide-snow avalanches in grassy terrain which has not yet discharged are possible at any time of day or night.

### Snowpack structure

Atop a relatively compact old snowpack surface there has been 15-30 cm of fresh powder registered. Strong winds have generated new drifts which in some places are 50 cm thick and can be triggered as a slab.

### Weather

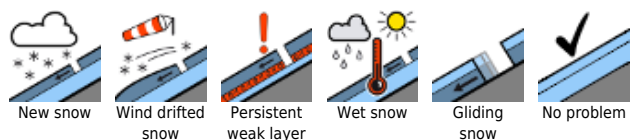
On Monday, sunshine unhindered to start with. During the course of the day, thin cirrus clouds will move in. During the afternoon, cloud cover will intensify. Towards evening, the higher peaks will disappear in fog. Temperature at 2000 m: at midday 2 degrees; at 3000 m: -6 degrees. Westerly winds will not be very noticeable in the morning except on wind-exposed summits. Later on, brisk SW winds will prevail.

### Outlook

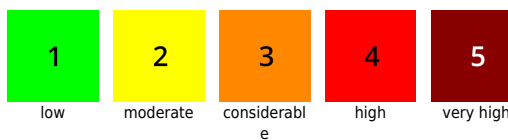
Winter is not yet giving up. In the coming days, a snowdrift problem will arise.

Translated by Jeffrey McCabe, [www.creativtrans.com](http://www.creativtrans.com)

#### Avalanche problems



#### Danger ratings



#### Expositions

