

Lower temperatures having an effect only at high altitude

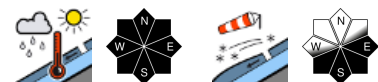


Osterhorngruppe, Gamsfeldgruppe, Untersbergstock, Chiemgauer Alpen, Heutal, Reiteralpe

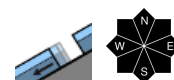


2200 m

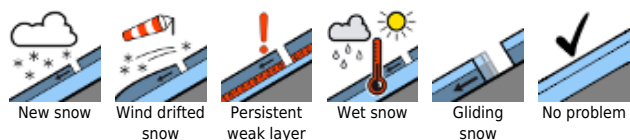
Loferer und Leoganger Steinberge, Oberpinzgauer Grasberge, Großvenedigergruppe Nord, Glocknergruppe Nord, Kitzbüheler Alpen, Glemmtal, Steinernes Meer, Hochkönig, Hagengebirge, Göllstock, Tennengebirge, Gosaukamm, Pongauer Grasberge, Dientner Grasberge, Goldberggruppe Nord, Niedere Tauern Nord, Ankogelgruppe, Muhr, Niedere Tauern Alpenhauptkamm, Niedere Tauern Süd, Goldberggruppe Alpenhauptkamm, Glocknergruppe Alpenhauptkamm, Großvenedigergruppe Alpenhauptkamm



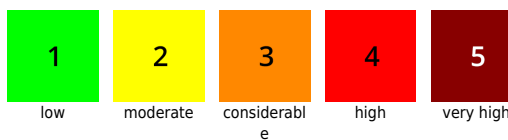
Nockberge



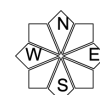
Avalanche problems



Danger ratings



Expositions



03.04.2021

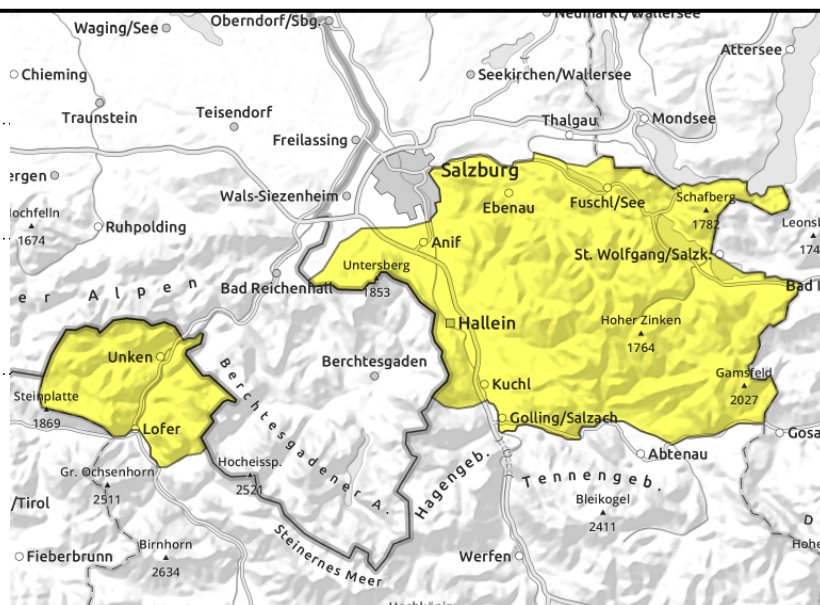
Osterhorngruppe, Gamsfeldgruppe, Untersbergstock, Chiemgauer Alpen, Heutal, Reiteralpe



triggerable at any time of day or night, large snow masses esp. in N-E aspects



naturally triggered avalanche activity



Breakable melt-freeze crusts, thin layer of fresh snow

On extremely steep grassy slopes where avalanches have not yet discharged, small-to-medium glide-snow avalanches can release at any time of day or night. This applies primarily to north-facing slopes. Wet loose-snow avalanches of medium size can be triggered by large additional loading. Superficial releases can then fracture down to deeper layers inside the snowpack.

Snowpack structure

The snowpack is quite moist, often wet in extended southern aspects, the lower temperatures will have an effect on the thin uppermost layers at most. The reserves of cold are minor. At higher altitudes there is a thin layer of fresh snow.

Weather

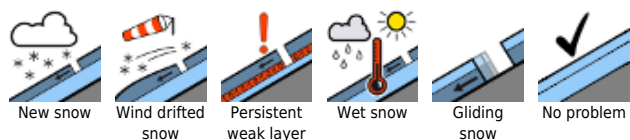
Following a night of predominantly overcast skies, rain and snow showers (often down to low lying areas) will shroud the peaks in fog on Saturday, low-level clouds will reduce visibility. Intermittent snowfall (max: 5 cm) and some graupel showers can be expected. Brisk to strong NW winds will be blowing. Temperature at 1500 m: -4 degrees.

On Sunday, initially low-lying residual clouds. During the daytime sunshine will be frequent. It will remain cold.

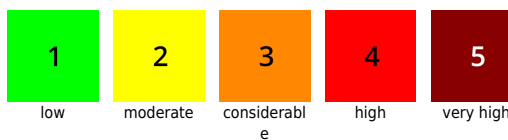
Outlook

The lower temperatures will take effect: wet-snow avalanches will recede on Sunday. The sunshine will cause a slight daytime cycle of naturally triggered avalanche activity at intermediate altitude, bringing the danger level to moderate.

Avalanche problems



Danger ratings

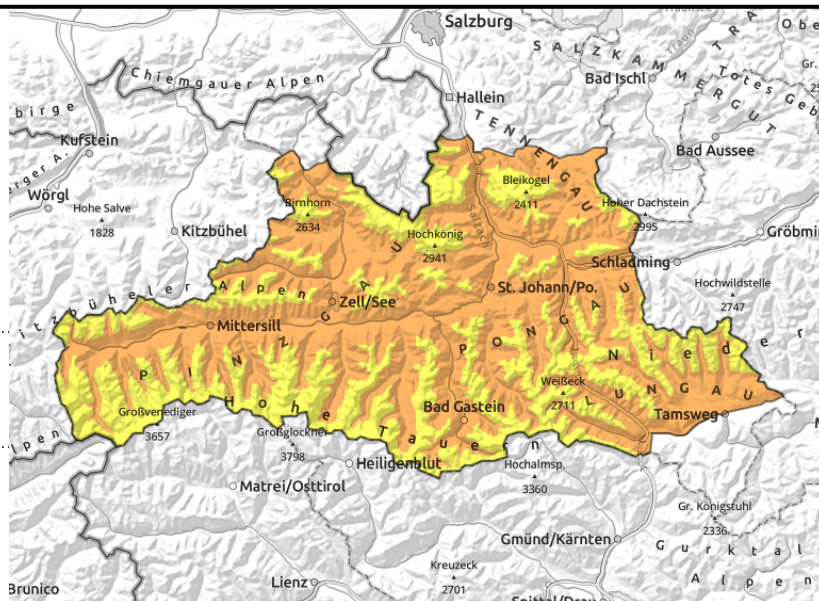


Expositions



03.04.2021

Loferer und Leoganger Steinberge, Oberpinzgauer Grasberge, Großvenedigergruppe Nord, Glocknergruppe Nord, Kitzbüheler Alpen, Glemmtal, Steinernes Meer, Hochkönig, Hagengebirge, Göllstock, Tennengebirge, Gosaukamm, Pongauer Grasberge, Dientner Grasberge, Goldberggruppe Nord, Niedere Tauern Nord, Ankogelgruppe, Muhr, Niedere Tauern Alpenhauptkamm, Niedere Tauern Süd, Goldberggruppe Alpenhauptkamm, Glocknergruppe Alpenhauptkamm, Großvenedigergruppe Alpenhauptkamm



2200 m



below 2200 m, by additional loading, isolated naturally triggered, mostly on sunny slopes



thin, small snowdrifts at high altitudes

Naturally and humanly triggered wet-snow avalanches below 2200 m

On extremely steep grassy slopes in all aspects, small-to-medium, in isolated cases also large-sized glide-snow avalanches, can be naturally triggered. Below 2200 m danger is CONSIDERABLE that wet loose-snow and slab avalanches will trigger naturally or through additional loading. These can grow to large size. Above 2200 m the danger is MODERATE. On a few spots on very steep north-facing slopes, slabs can be triggered even by minimal additional loading, particularly in transitions where snow is shallow. Small danger zones (danger of falling!) are forming in high alpine regions due to thin snowpack patches in steep ridgeline terrain.

Snowpack structure

The entire snowpack is thoroughly moist up to high altitudes and in extended southern aspects up to 2600 m superficially wet. The lower temperatures are having a stabilizing effect above 2200 m, below that altitude there are only breakable crusts. The snowpack on north-facing slopes is measurably drier above 2200m. In high alpine regions, stormy winds are generating fresh snowdrifts. Breakable crusts of thin, soft layers are evident in the old snow and near ground level.

Weather

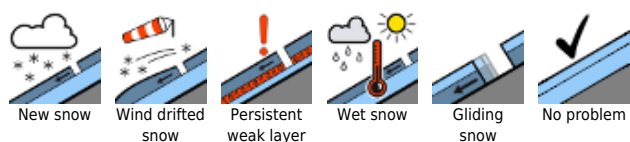
Following a night of predominantly overcast skies with rainfall and snow showers at ever-lower levels, peaks on Saturday will mostly be shrouded in fog, low-lying clouds will reduce visibility. Intermittent snowfall (max: 5 cm) and occasional graupel showers are expected. Brisk to strong NW winds (stormy in the Tauern, at 60-80 km/hr) will be blowing. Temperature at 2000 m: -7 degrees; at 3000 m, -14 degrees.

On Sunday, low-lying residual clouds, gradually it will turn sunny everywhere. In high alpine regions, still unpleasant north winds.

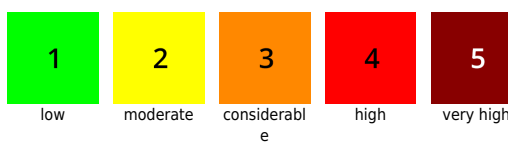
Outlook

The lower temperatures will take effect: wet-snow avalanches will recede on Sunday. The sunshine

Avalanche problems



Danger ratings



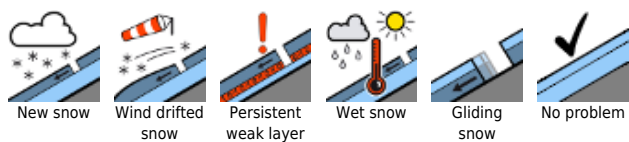
Expositions



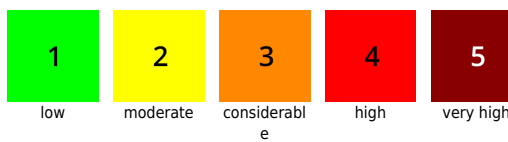
03.04.2021

will cause a slight daytime cycle of naturally triggered avalanche activity at intermediate altitude, bringing the danger level to moderate. Small fresh snowdrifts will be generated at high altitudes.

Avalanche problems



Danger ratings

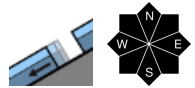


Expositions

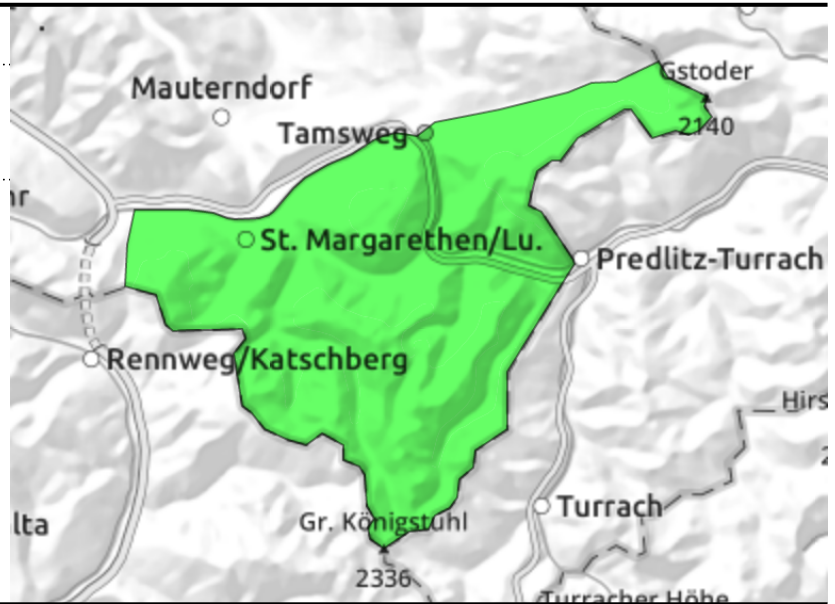


03.04.2021

Nockberge



rare avalanche prone locations in extremely steep terrain



Isolated avalanche prone locations in extremely steep terrain

Danger of avalanches is LOW. Naturally triggered releases will be isolated, in extremely steep grassy terrain (glide-snow problem). Releases from additional loading are possible only in few spots in outlying terrain, e.g. where the snow is shallow in extremely steep north-facing terrain (old-snow problem), and then, primarily by large additional loading.

Snowpack structure

The snowpack is moist and in extended southern aspects often thoroughly wet. The lower temperatures have helped it to regain firmness. Despite sunshine the reserves of cold will persist, amid icy winds. One weak point: the depth hoar at ground level.

Weather

Amid strong-to-stormy NW winds (50-70 km/hr), clouds and sunshine will alternate on Sunday, with a certain dominance of sunshine. It is expected to remain largely dry. Temperature at 2000 m: -7 degrees.

On Sunday, unhampered sunshine, cold. It will remain very windy, but no longer quite as stormy.

Outlook

No significant change is expected on Sunday.

Translated by Jeffrey McCabe, www.creativtrans.com

Avalanche problems



Danger ratings



Expositions

