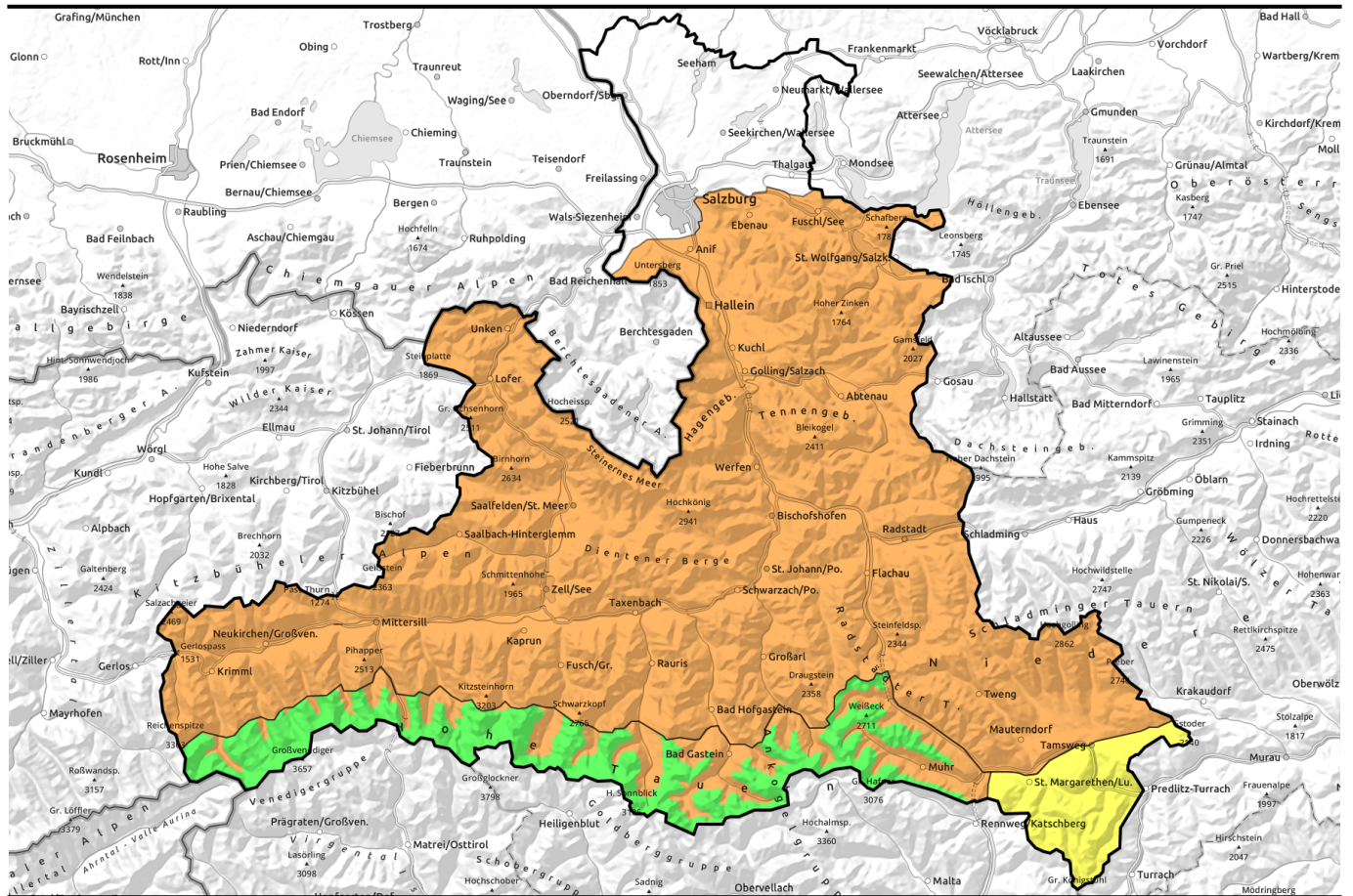


02.04.2021



Moist, often deep, much less favourable than recent days

	<p>2600 m Großenedigergruppe Alpenhauptkamm, Glocknergruppe Alpenhauptkamm, Goldberggruppe Alpenhauptkamm, Ankogelgruppe, Muhr</p>	
	<p>Osterhorngruppe, Gamsfeldgruppe, Untersbergstock, Steinernes Meer, Hochkönig, Hagengebirge, Göllstock, Tennengebirge, Gosaukamm, Chiemgauer Alpen, Heutal, Reiteralpe, Loferer und Leoganger Steinberge, Kitzbüheler Alpen, Glemmtal, Oberpinzgauer Grasberge, Großenedigergruppe Nord, Dientner Grasberge, Pongauer Grasberge, Niedere Tauern Nord, Goldberggruppe Nord, Glocknergruppe Nord, Niedere Tauern Alpenhauptkamm, Niedere Tauern Süd</p>	
	<p>Nockberge</p>	

Avalanche problems



Danger ratings



Expositions



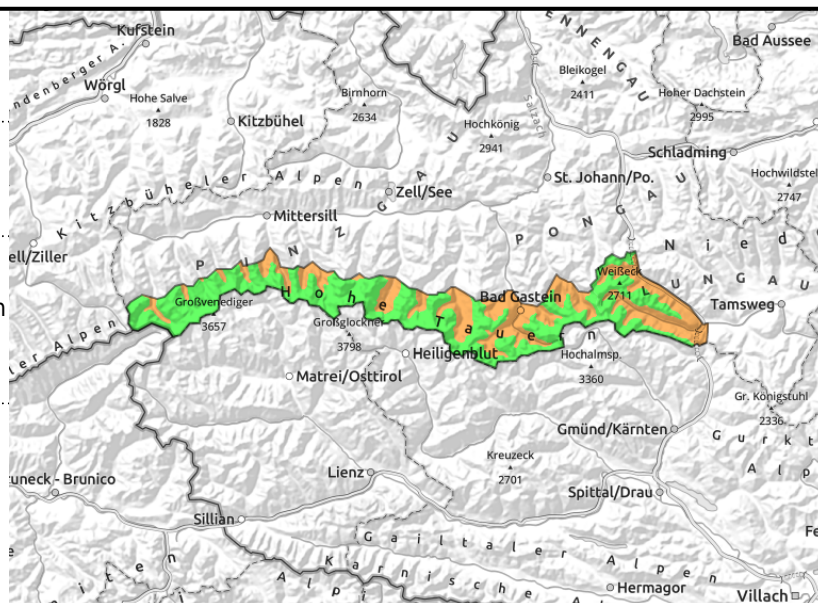
02.04.2021

Großvenedigergruppe Alpenhauptkamm, Glocknergruppe Alpenhauptkamm, Goldberggruppe Alpenhauptkamm, Ankogelgruppe, Muhr



Tendency towards naturally triggered avalanches right from the start, also isolated large avalanches possible

triggerable on extremely steep grassy slopes, possible at any time of day or night



Heightened naturally triggered avalanche activity all day long

Above 2600 m conditions are favourable apart from reduced visibility. There, dry and stable snow dominates, without a daytime cycle.

Below 2600 m there are 2 threats:

Wet-snow avalanches: unfavourable conditions because the snowpack is moist and deep right from the start, depending on aspect. In very steep terrain, wet-snow slides are triggerable. In extremely steep terrain and particularly in W-S-E aspects, naturally triggered medium-to-LARGE wet-snow avalanches are possible. Also in the morning! Avalanches are likely especially where the terrain is rocky and where avalanches have not yet discharged. On north-facing slopes there is more leeway.

Glide-snow problem: In extremely steep grassy terrain. These can release at any time of day or night. Most are medium, some few are large. Applies also to north-facing slopes below 1800 m

Snowpack structure

The snowpack is moist up to high altitudes, on extended south-facing slopes even wet down to deeper layers, up to at least 2500 m. Nocturnal outgoing radiation is lacking, there is no crust or only a very thin film. Rain is possible here and there. On north-facing slopes the snowpack is much drier above 2200 m, where there are still reserves of cold inside it.

Weather

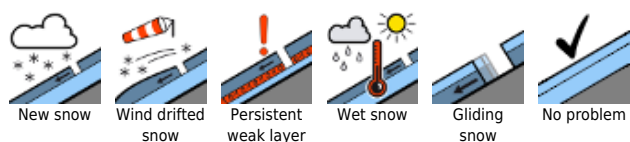
Nighttime skies will be cloudy, a few warm showers will pass through (rainfall up to 2400 m). On **Friday**, clouds and fog right from the beginning (starkly diffuse radiation) in summit regions. Occasional light, short showers (snowfall level 2000 m). The NW winds will be blowing at 40 km/hr in exposed terrain above the treeline. At 2000 m: 2 degrees; at 3000 m, -5 degrees.

On **Saturday**, fog and low lying clouds. Intermittent snowfall is expected, not much but some graupel showers might be included. About 5 cm of fresh snow is anticipated. Much colder, rather windy. At 2000 m: -6 degrees.

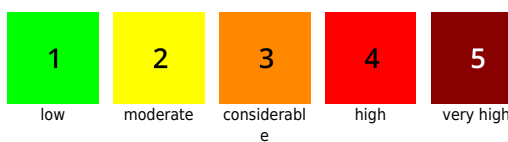
Outlook

On Saturday, the lower temperatures will have a stabilizing effect only above 2000 m. Below that altitude a moist and wet snowpack will dominate. **Conditions on Sunday, and especially on**

Avalanche problems



Danger ratings



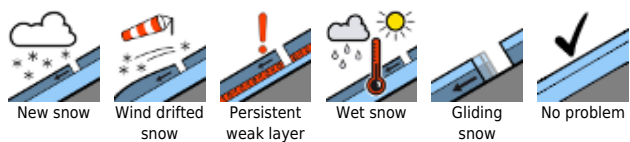
Expositions



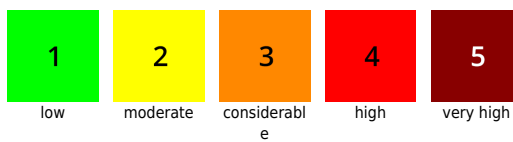
02.04.2021

Monday, will be much better, following a night of clear skies.

Avalanche problems



Danger ratings

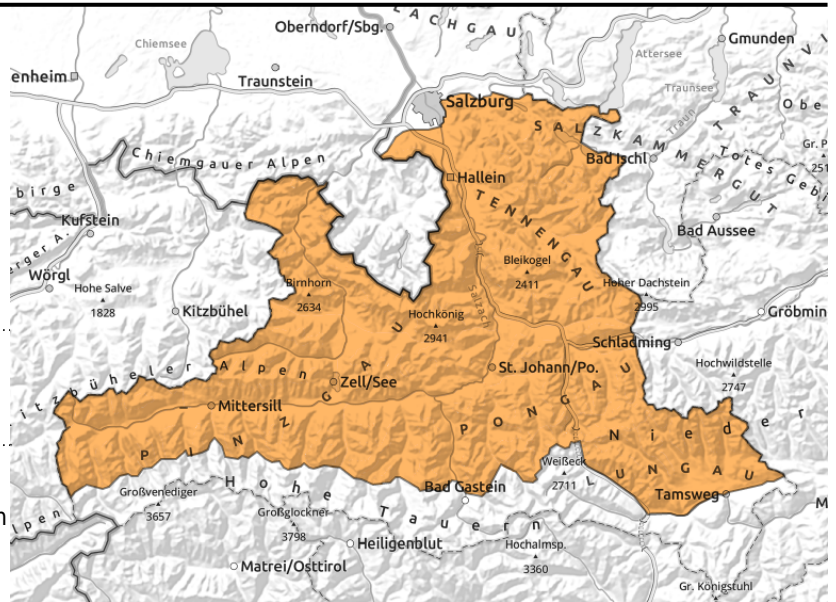


Expositions



02.04.2021

Osterhorngruppe, Gamsfeldgruppe, Untersbergstock, Steinernes Meer, Hochkönig, Hagengebirge, Göllstock, Tennengebirge, Gosaukamm, Chiemgauer Alpen, Heutal, Reiteralpe, Loferer und Leoganger Steinberge, Kitzbüheler Alpen, Glemmtal, Oberpinzgauer Grasberge, Großvenedigergruppe Nord, Dientner Grasberge, Pongauer Grasberge, Niedere Tauern Nord, Goldberggruppe Nord, Glocknergruppe Nord, Niedere Tauern Alpenhauptkamm, Niedere Tauern Süd



Tendency towards naturally triggered avalanches right from the start, also isolated large avalanches possible



triggerable on extremely steep grassy slopes, possible at any time of day or night

Heightened naturally triggered avalanche activity all day long

Wet-snow avalanches: unfavourable conditions because the snowpack is moist and deep right from the start, depending on aspect. In very steep terrain, wet-snow slides are triggerable. In extremely steep terrain and particularly in W-S-E aspects, naturally triggered medium-to-LARGE wet-snow avalanches are possible. Also in the morning! Avalanches are likely especially where the terrain is rocky and where avalanches have not yet discharged. On north-facing slopes there is more leeway.
Glide-snow problem: In extremely steep grassy terrain. These can release at any time of day or night. Most are medium, some few are large. Applies also to north-facing slopes below 1800 m

Snowpack structure

The snowpack is moist up to high altitudes, on extended south-facing slopes even wet down to deeper layers, up to at least 2500 m. Nocturnal outgoing radiation is lacking, there is no crust or only a very thin film. Rain is possible here and there. On north-facing slopes the snowpack is much drier above 2200 m, where there are still reserves of cold inside it.

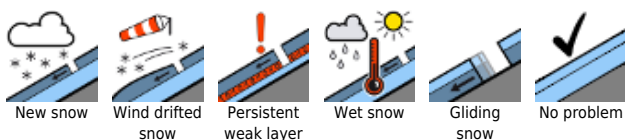
Weather

Nighttime skies will be cloudy, a few warm showers will pass through (rainfall up to 2400 m). On **Friday**, clouds and fog right from the beginning (starkly diffuse radiation) in summit regions. Occasional light, short showers (snowfall level 2000 m). The NW winds will be blowing at 40 km/hr in exposed terrain above the treeline. At 2000 m: 2 degrees; at 3000 m, -5 degrees.
 On **Saturday**, fog and low lying clouds. Intermittent snowfall is expected, not much but some graupel showers might be included. About 5 cm of fresh snow is anticipated. Much colder, rather windy. At 2000 m: -6 degrees.

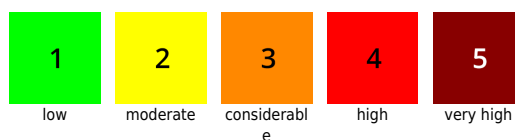
Outlook

On Saturday, the lower temperatures will have a stabilizing effect only above 2000 m. Below that altitude a moist and wet snowpack will dominate. **Conditions on Sunday, and especially on**

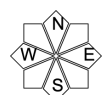
Avalanche problems



Danger ratings



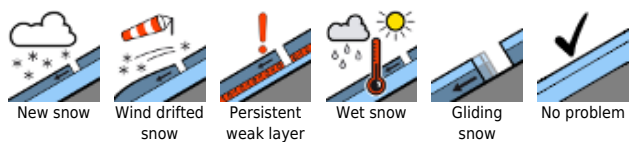
Expositions



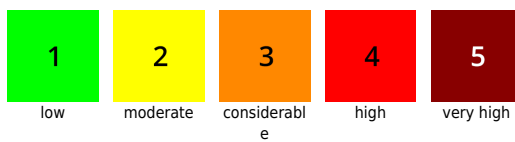
02.04.2021

Monday, will be much better, following a night of clear skies.

Avalanche problems



Danger ratings



Expositions



02.04.2021

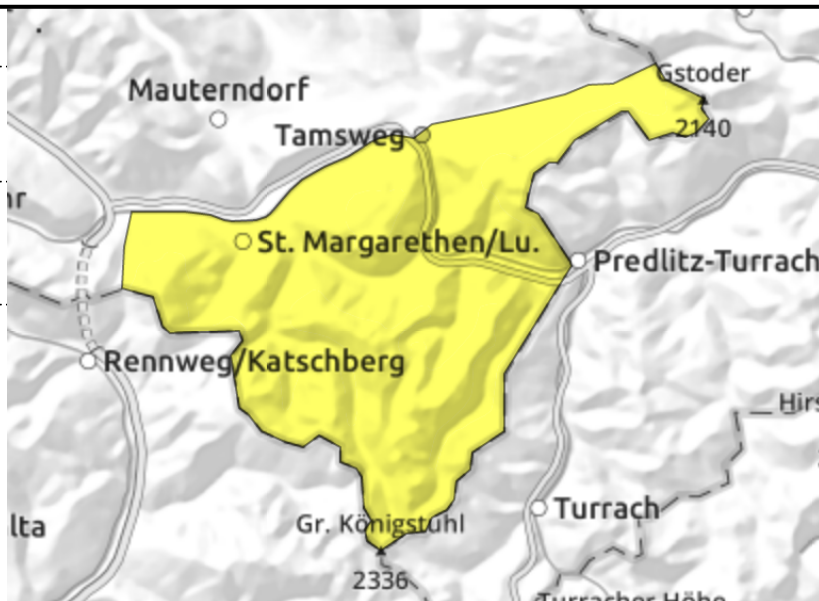
Nockberge



Soft from the start on W-S-E facing slopes



triggerable on extremely steep grassy slopes, possible at any time of day or night



Wet-snow avalanches: unfavourable conditions because the snowpack is moist and deep right from the start, depending on aspect. In very steep terrain, wet-snow slides are triggerable. In extremely steep terrain and particularly in W-S-E aspects, naturally triggered medium-to-LARGE wet-snow avalanches are possible. Also in the morning! Avalanches are likely especially where the terrain is rocky and where avalanches have not yet discharged. On north-facing slopes there is more leeway.
Glide-snow problem: In extremely steep grassy terrain. These can release at any time of day or night. Most are small-to-medium sized.

Snowpack structure

The snowpack is moist up to high altitudes, on extended south-facing slopes even wet down to deeper layers, up to at least 2500 m. Nocturnal outgoing radiation is lacking, there is no crust or only a very thin film. Rain is possible here and there. On north-facing slopes the snowpack is much drier above 2200 m, where there are still reserves of cold inside it.

Weather

Nighttime skies will be cloudy, a few warm showers will pass through (rainfall up to 2400 m). On **Friday**, clouds and fog right from the beginning (starkly diffuse radiation) in summit regions alternating with sunshine. The NW winds will be blowing at 40 km/hr in exposed terrain above the treeline. At 2000 m: 4 degrees.
 On **Saturday**, fog and low lying clouds, but some sunshine might be included. Stormy northerly winds (60-80 km/hr). Much colder. At 2000 m: -6 degrees.

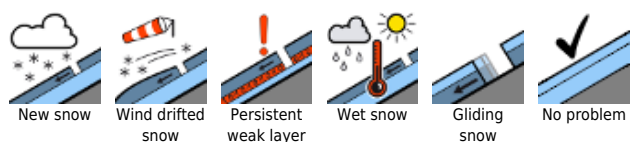
Outlook

On Saturday the lower temperatures will have a stabilizing effect. The wet-snow threat will recede.

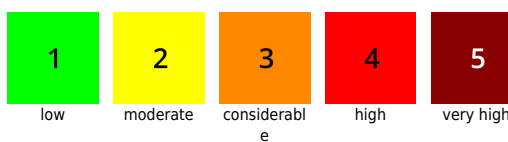
Predominantly LOW danger.

Translated by Jeffrey McCabe, www.creativtrans.com

Avalanche problems



Danger ratings



Expositions

