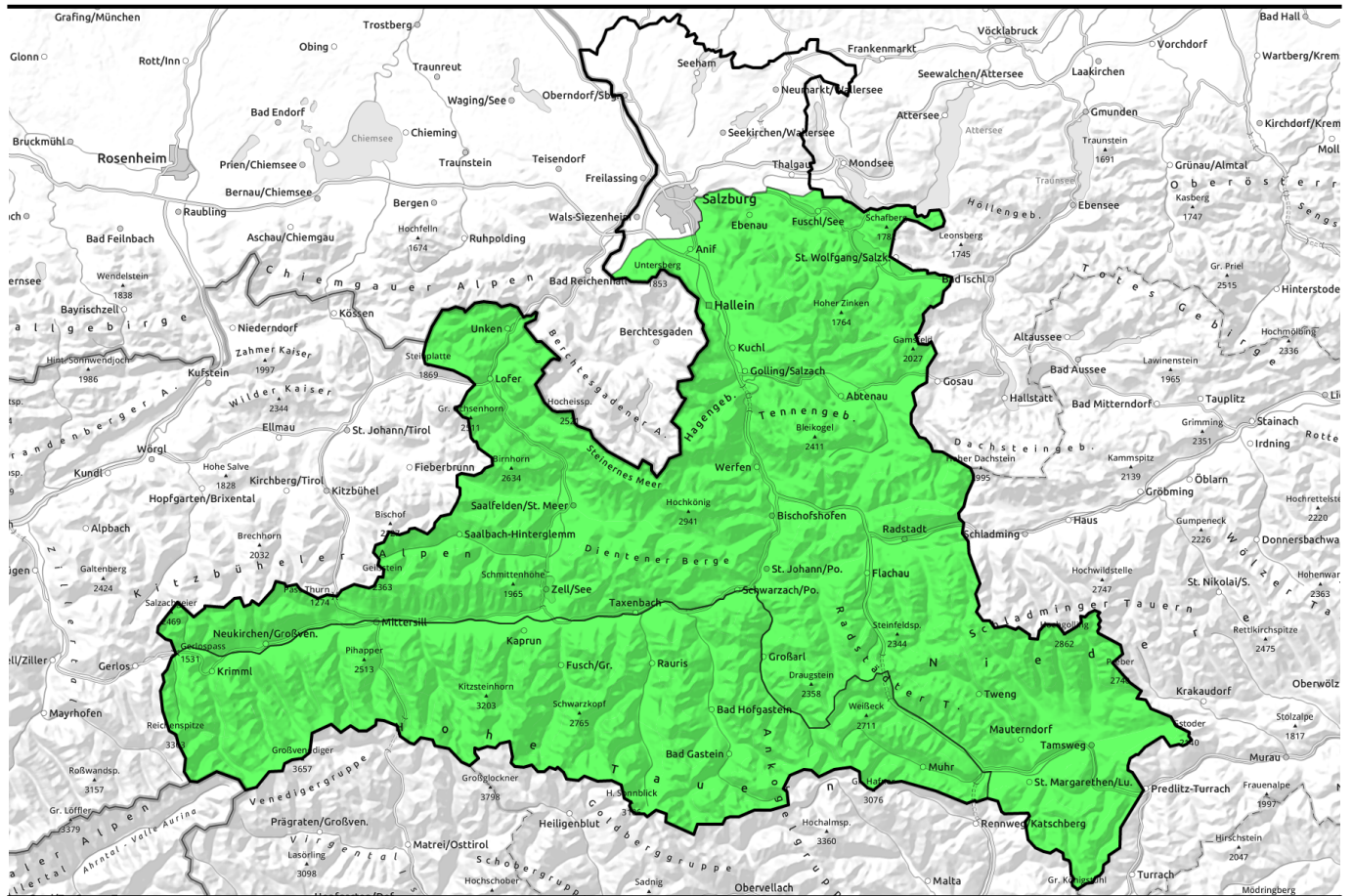


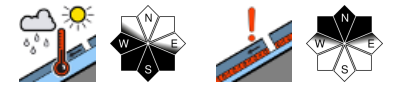
# 01.04.2021, morning



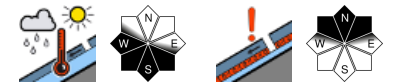
## Super conditions



Großenedigergruppe Nord, Großenedigergruppe Alpenhauptkamm, Glocknergruppe Nord, Glocknergruppe Alpenhauptkamm, Goldberggruppe Nord, Goldberggruppe Alpenhauptkamm, Ankogelgruppe, Muhr



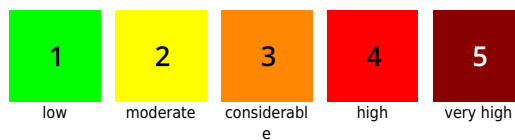
Chiemgauer Alpen, Heutal, Reiteralpe, Loferer und Leoganger Steinberge, Kitzbüheler Alpen, Glemmtal, Oberpinzgauer Grasberge, Steinernes Meer, Hochkönig, Hagengebirge, Göllstock, Osterhorngruppe, Gamsfeldgruppe, Untersbergstock, Tennengebirge, Gosaukamm, Dientner Grasberge, Pongauer Grasberge, Niedere Tauern Nord, Niedere Tauern Alpenhauptkamm, Niedere Tauern Süd, Nockberge



### Avalanche problems



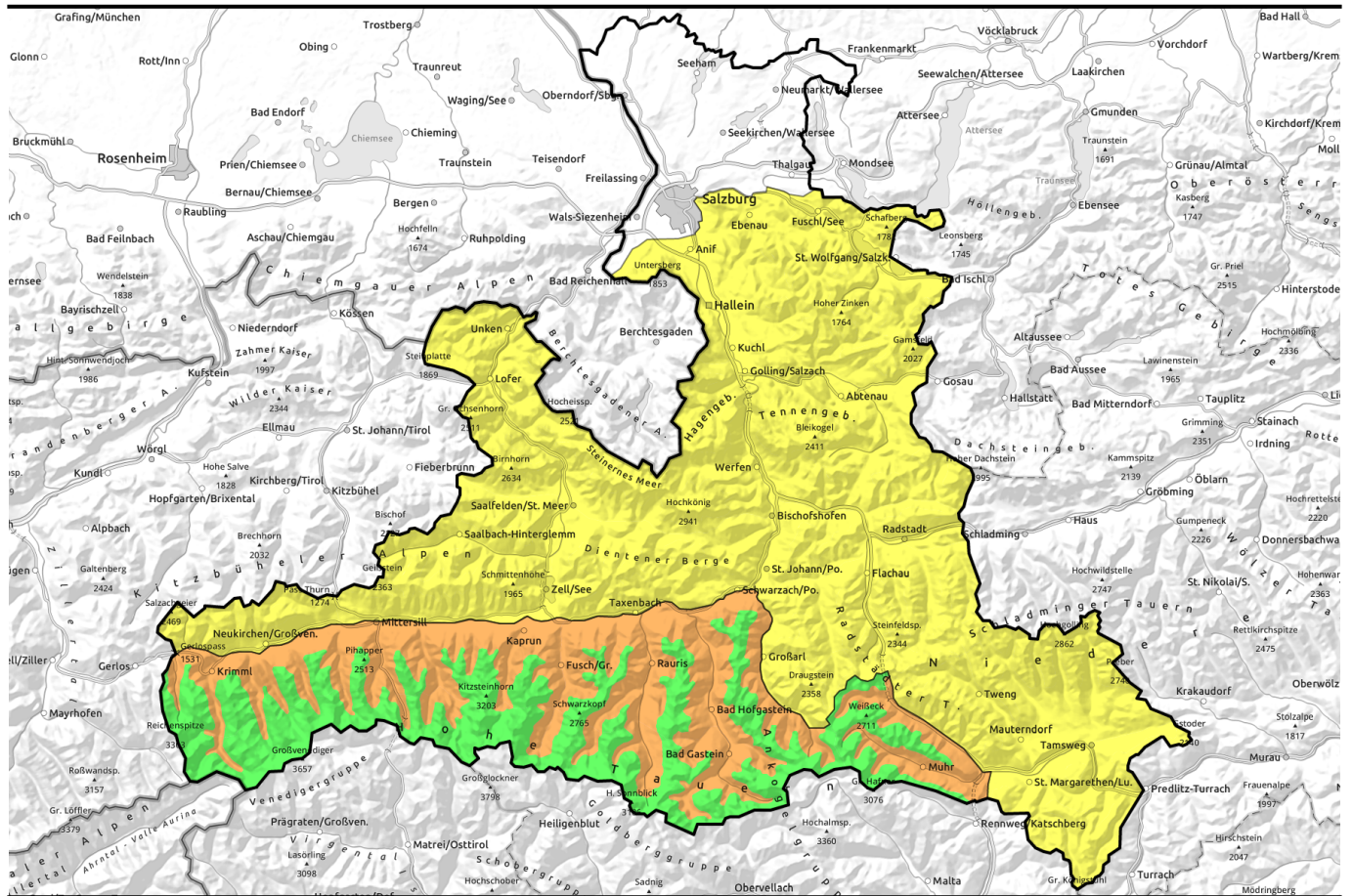
### Danger ratings



### Expositions



# 01.04.2021, afternoon

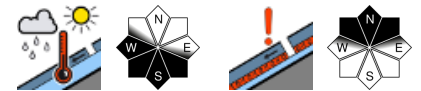


## Top Verhältnisse!

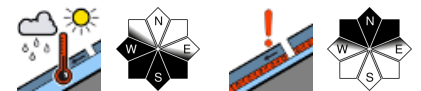


Großvenedigergruppe Nord, Großvenedigergruppe Alpenhauptkamm, Glocknergruppe Nord, Glocknergruppe Alpenhauptkamm, Goldberggruppe Nord, Goldberggruppe Alpenhauptkamm, Ankogelgruppe, Muhr

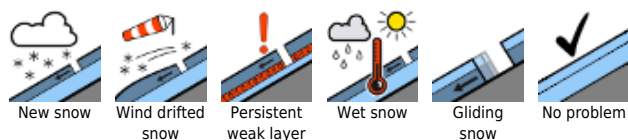
2600 m



Chiemgauer Alpen, Heutal, Reiteralpe, Loferer und Leoganger Steinberge, Kitzbüheler Alpen, Glemmtal, Oberpinzgauer Grasberge, Steinernes Meer, Hochkönig, Hagengebirge, Göllstock, Osterhorngruppe, Gamsfeldgruppe, Untersbergstock, Tennengebirge, Gosaukamm, Dientner Grasberge, Pongauer Grasberge, Niedere Tauern Nord, Niedere Tauern Alpenhauptkamm, Niedere Tauern Süd, Nockberge



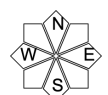
### Avalanche problems



### Danger ratings



### Expositions



# 01.04.2021, morning

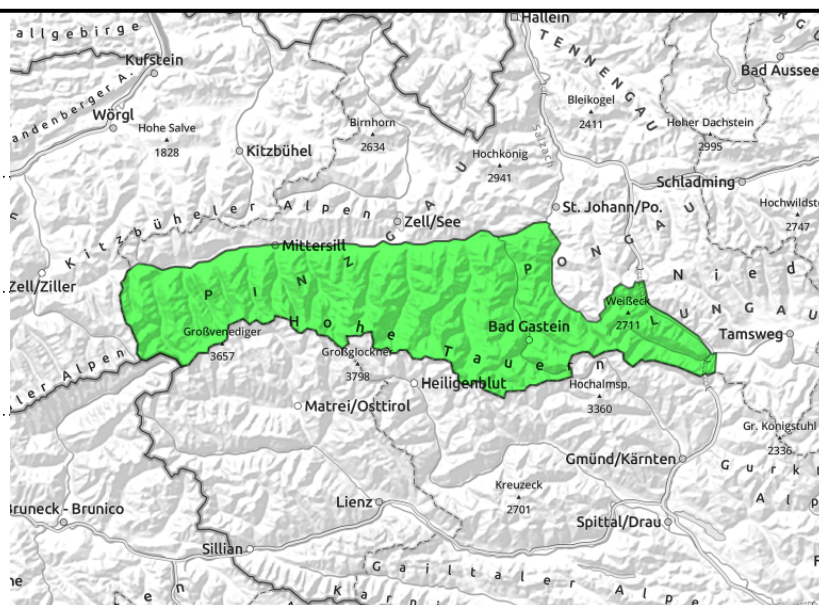
Großvenedigergruppe Nord, Großvenedigergruppe Alpenhauptkamm, Glocknergruppe Nord, Glocknergruppe Alpenhauptkamm, Goldberggruppe Nord, Goldberggruppe Alpenhauptkamm, Ankogelgruppe, Muhr



possible naturally triggered avalanches starting at midday



triggerable in few spots in outlying terrain, extremely steep, shady, above 2300 m



## Heed daytime cycle and aspect

Wet-snow problem: shady slope tours are dry and hard. Pure west-facing slopes turn to firn rather late. **In morning and above 2600m all day long, conditions are very favourable.** Firn snow develops and does not become deep at midday. In the afternoon, small-to-medium-sized wet-snow avalanches are possible. This applies to extremely steep terrain. Some glide-snow avalanches are also possible.

Old-snow problem: an isolated, seldom slab can trigger in a few spots by large additional loading in extremely steep north-facing terrain above 2300 m. This is a risk in very few places.

## Snowpack structure

Good outgoing radiation will be possible at night, a hard melt-freeze crust will form on sunny slopes up to 2800 m, then soften to varying degrees during the daytime. In S/W aspects (SE-SW) the snowpack is thoroughly wet to a deeper level. On north-facing slopes the snowpack above 2000 m is still dry.

Above 2300 m on north-facing slopes there are isolated weak layers which formed in early March (before the recent heavy snowfall) which are well blanketed-over in most cases.

## Weather

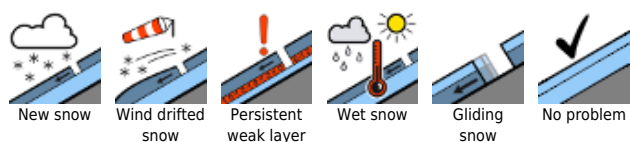
On **Thursday**, following a night of clear skies, sunny, a few cumulus clouds will form at summit altitude, brisk NW winds will intensify. Still warm, although temperatures will recede slightly. At 2000 m: 6 degrees; at 3000 m: -1 degree.

Thursday night, skies will be partially cloudy. On **Friday**, lots of cloud cover, intermittent fog at summit level. Occasional short, light showers. Snowfall level at 2000 m. NW winds blowing at 40 km/hr. At 2000 m, +1 degree.

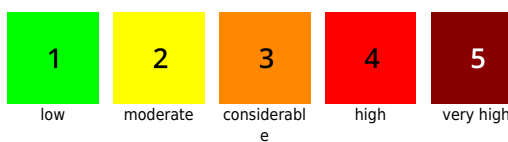
## Outlook

Nighttime skies will be cloudy. Due to rain showers **on Friday, conditions will be less favourable below 2300 m.** Conditions on Sunday and Monday **will be decidedly better.**

### Avalanche problems



### Danger ratings




### Expositions

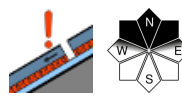


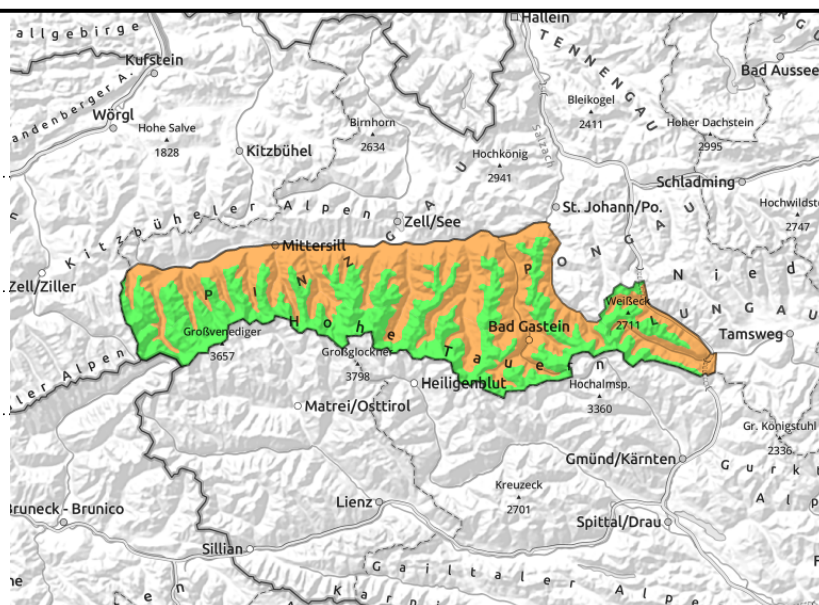
# 01.04.2021, afternoon

Großvenedigergruppe Nord, Großvenedigergruppe Alpenhauptkamm, Glocknergruppe Nord, Glocknergruppe Alpenhauptkamm, Goldberggruppe Nord, Goldberggruppe Alpenhauptkamm, Ankogelgruppe, Muhr



 possible naturally triggered avalanches starting at midday

 triggerable in few spots in outlying terrain, extremely steep, shady, above 2300 m



## Heed daytime cycle and aspect

Wet-snow problem: shady slope tours are dry and hard. Pure west-facing slopes turn to firn rather late. **In morning and above 2600m all day long, conditions are very favourable.** Firn snow develops and does not become deep at midday. In the afternoon, small-to-medium-sized wet-snow avalanches are possible. This applies to extremely steep terrain. Some glide-snow avalanches are also possible.

Old-snow problem: an isolated, seldom slab can trigger in a few spots by large additional loading in extremely steep north-facing terrain above 2300 m. This is a risk in very few places.

## Snowpack structure

Good outgoing radiation will be possible at night, a hard melt-freeze crust will form on sunny slopes up to 2800 m, then soften to varying degrees during the daytime. In S/W aspects (SE-SW) the snowpack is thoroughly wet to a deeper level. On north-facing slopes the snowpack above 2000 m is still dry.

Above 2300 m on north-facing slopes there are isolated weak layers which formed in early March (before the recent heavy snowfall) which are well blanketed-over in most cases.

## Weather

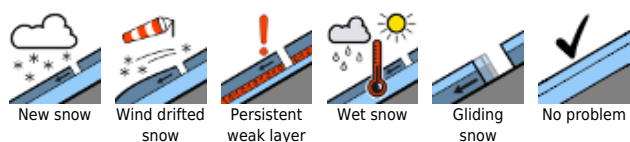
On **Thursday**, following a night of clear skies, sunny, a few cumulus clouds will form at summit altitude, brisk NW winds will intensify. Still warm, although temperatures will recede slightly. At 2000 m: 6 degrees; at 3000 m: -1 degree.

Thursday night, skies will be partially cloudy. On **Friday**, lots of cloud cover, intermittent fog at summit level. Occasional short, light showers. Snowfall level at 2000 m. NW winds blowing at 40 km/hr. At 2000 m, +1 degree.

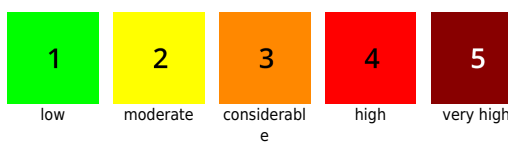
## Outlook

Nighttime skies will be cloudy. Due to rain showers **on Friday, conditions will be less favourable below 2300 m.** Conditions on Sunday and Monday **will be decidedly better.**

### Avalanche problems



### Danger ratings

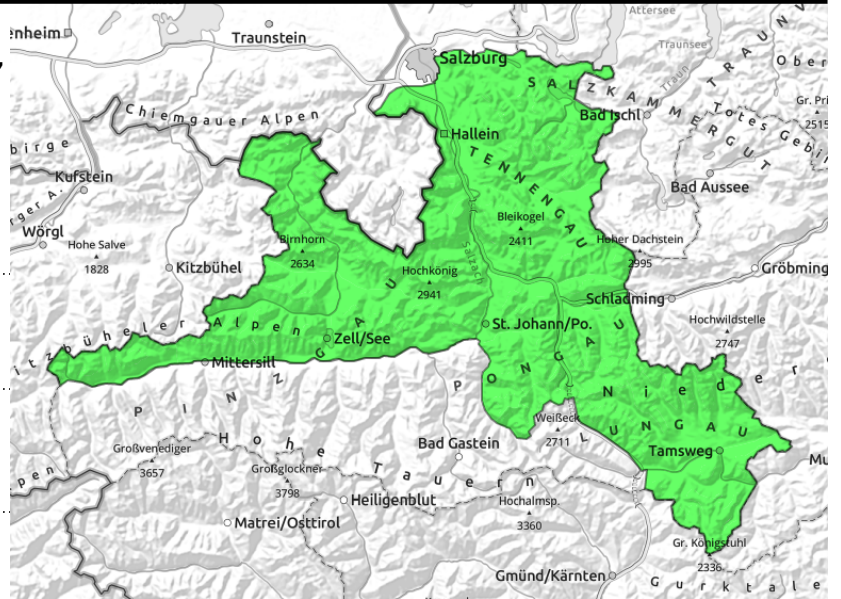


### Expositions



# 01.04.2021, morning

**Chiemgauer Alpen, Heutal, Reiteralpe, Loferer und Leoganger Steinberge, Kitzbüheler Alpen, Glemmtal, Oberpinzgauer Grasberge, Steinernes Meer, Hochkönig, Hagengebirge, Göllstock, Osterhorngruppe, Gamsfeldgruppe, Untersbergstock, Tennengebirge, Gosaukamm, Dientner Grasberge, Pongauer Grasberge, Niedere Tauern Nord, Niedere Tauern Alpenhauptkamm, Niedere Tauern Süd, Nockberge**



possible naturally triggered avalanches starting at midday



triggerable in few spots in outlying terrain, extremely steep, shady, above 2300 m

## Heed daytime cycle and aspect

Wet-snow problem: shady slope tours are dry and hard. Pure west-facing slopes turn to firm rather late. **In morning and above 2600m all day long, conditions are very favourable.** Firm snow develops and does not become deep at midday. In the afternoon, medium-sized, in south and southwestern terrain isolated large-sized wet-snow avalanches are possible. This applies to extremely steep terrain up to 2800 m. Frequent avalanche activity in rocky terrain or where the snow is shallow. In isolated cases, glide-snow avalanches.

Old-snow problem: an isolated, seldom slab can trigger in a few spots by large additional loading in extremely steep north-facing terrain above 2300 m. These slabs could in some circumstances grow to large size.

## Snowpack structure

Good outgoing radiation will be possible at night, a hard melt-freeze crust will form on sunny slopes up to 2800 m, then soften to varying degrees during the daytime. In S/W aspects (SE-SW) the snowpack is thoroughly wet to a deeper level. On north-facing slopes the snowpack above 2000 m is still dry.

Above 2300 m on north-facing slopes there are isolated weak layers which formed in early March (before the recent heavy snowfall) which are well blanketed-over in most cases.

## Weather

On **Thursday**, following a night of clear skies, sunny, a few cumulus clouds will form at summit altitude, brisk NW winds will intensify. Still warm, although temperatures will recede slightly. At 2000 m: 6 degrees; at 3000 m: -1 degree.

Thursday night, skies will be partially cloudy. On **Friday**, lots of cloud cover, intermittent fog at summit level. Occasional short, light showers. Snowfall level at 2000 m. NW winds blowing at 40 km/hr. At 2000 m, +1 degree.

## Outlook

Nighttime skies will be cloudy. Due to rain showers on Friday, conditions will be less favourable below

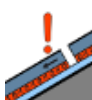
### Avalanche problems



New snow



Wind drifted snow



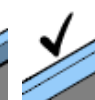
Persistent weak layer



Wet snow

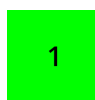


Gliding snow



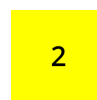
No problem

### Danger ratings



1

low



2

moderate



3

considerable



4

high



5

very high

### Expositions



# 01.04.2021, morning

2300 m. Conditions on Sunday and Monday will be decidedly better.

---

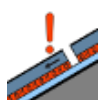
## Avalanche problems



New snow



Wind drifted  
snow



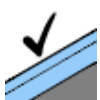
Persistent  
weak layer



Wet snow

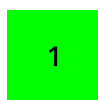


Gliding  
snow



No problem

## Danger ratings



1

low



2

moderate



3

considerabl  
e



4

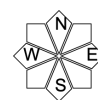
high



5

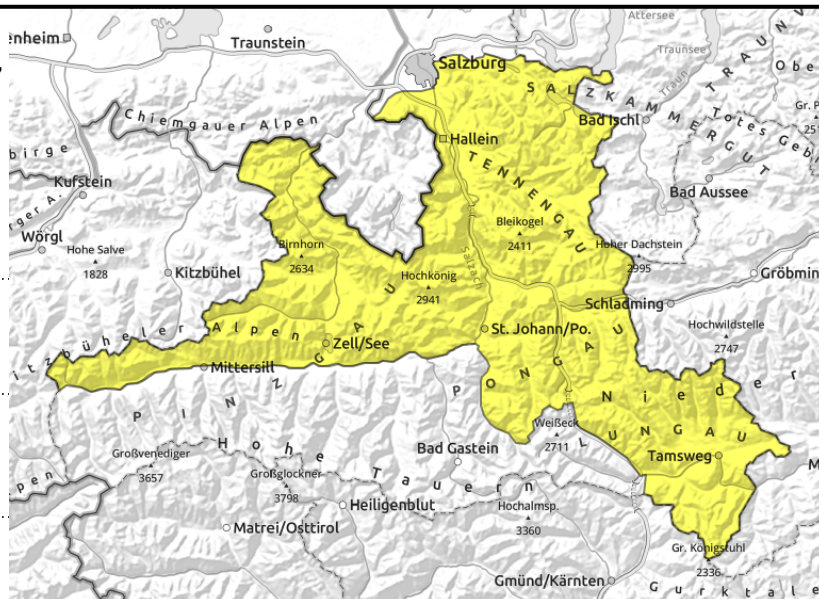
very high

## Expositions



# 01.04.2021, afternoon

Chiemgauer Alpen, Heutal, Reiteralpe, Loferer und Leoganger Steinberge, Kitzbüheler Alpen, Glemmtal, Oberpinzgauer Grasberge, Steinernes Meer, Hochkönig, Hagengebirge, Göllstock, Osterhorngruppe, Gamsfeldgruppe, Untersbergstock, Tennengebirge, Gosaukamm, Dientner Grasberge, Pongauer Grasberge, Niedere Tauern Nord, Niedere Tauern Alpenhauptkamm, Niedere Tauern Süd, Nockberge



possible naturally triggered avalanches starting at midday



triggerable in few spots in outlying terrain, extremely steep, shady, above 2300 m

## Heed daytime cycle and aspect

Wet-snow problem: shady slope tours are dry and hard. Pure west-facing slopes turn to firm rather late. **In morning and above 2600m all day long, conditions are very favourable.** Firm snow develops and does not become deep at midday. In the afternoon, medium-sized, in south and southwestern terrain isolated large-sized wet-snow avalanches are possible. This applies to extremely steep terrain up to 2800 m. Frequent avalanche activity in rocky terrain or where the snow is shallow. In isolated cases, glide-snow avalanches.

Old-snow problem: an isolated, seldom slab can trigger in a few spots by large additional loading in extremely steep north-facing terrain above 2300 m. These slabs could in some circumstances grow to large size.

## Snowpack structure

Good outgoing radiation will be possible at night, a hard melt-freeze crust will form on sunny slopes up to 2800 m, then soften to varying degrees during the daytime. In S/W aspects (SE-SW) the snowpack is thoroughly wet to a deeper level. On north-facing slopes the snowpack above 2000 m is still dry.

Above 2300 m on north-facing slopes there are isolated weak layers which formed in early March (before the recent heavy snowfall) which are well blanketed-over in most cases.

## Weather

On **Thursday**, following a night of clear skies, sunny, a few cumulus clouds will form at summit altitude, brisk NW winds will intensify. Still warm, although temperatures will recede slightly. At 2000 m: 6 degrees; at 3000 m: -1 degree.

Thursday night, skies will be partially cloudy. On **Friday**, lots of cloud cover, intermittent fog at summit level. Occasional short, light showers. Snowfall level at 2000 m. NW winds blowing at 40 km/hr. At 2000 m, +1 degree.

## Outlook

Nighttime skies will be cloudy. Due to rain showers on Friday, conditions will be less favourable below

### Avalanche problems



New snow



Wind drifted snow



Persistent weak layer



Wet snow



Gliding snow



No problem

### Danger ratings



1

low



2

moderate



3

considerable



4

high



5

very high

### Expositions



# 01.04.2021, afternoon

2300 m. Conditions on Sunday and Monday will be decidedly better.

Translated by Jeffrey McCabe, [www.creativtrans.com](http://www.creativtrans.com)

## Avalanche problems



New snow



Wind drifted  
snow



Persistent  
weak layer



Wet snow



Gliding  
snow



No problem

## Danger ratings



1

low



2

moderate



3

considerabl  
e



4

high



5

very high

## Expositions

