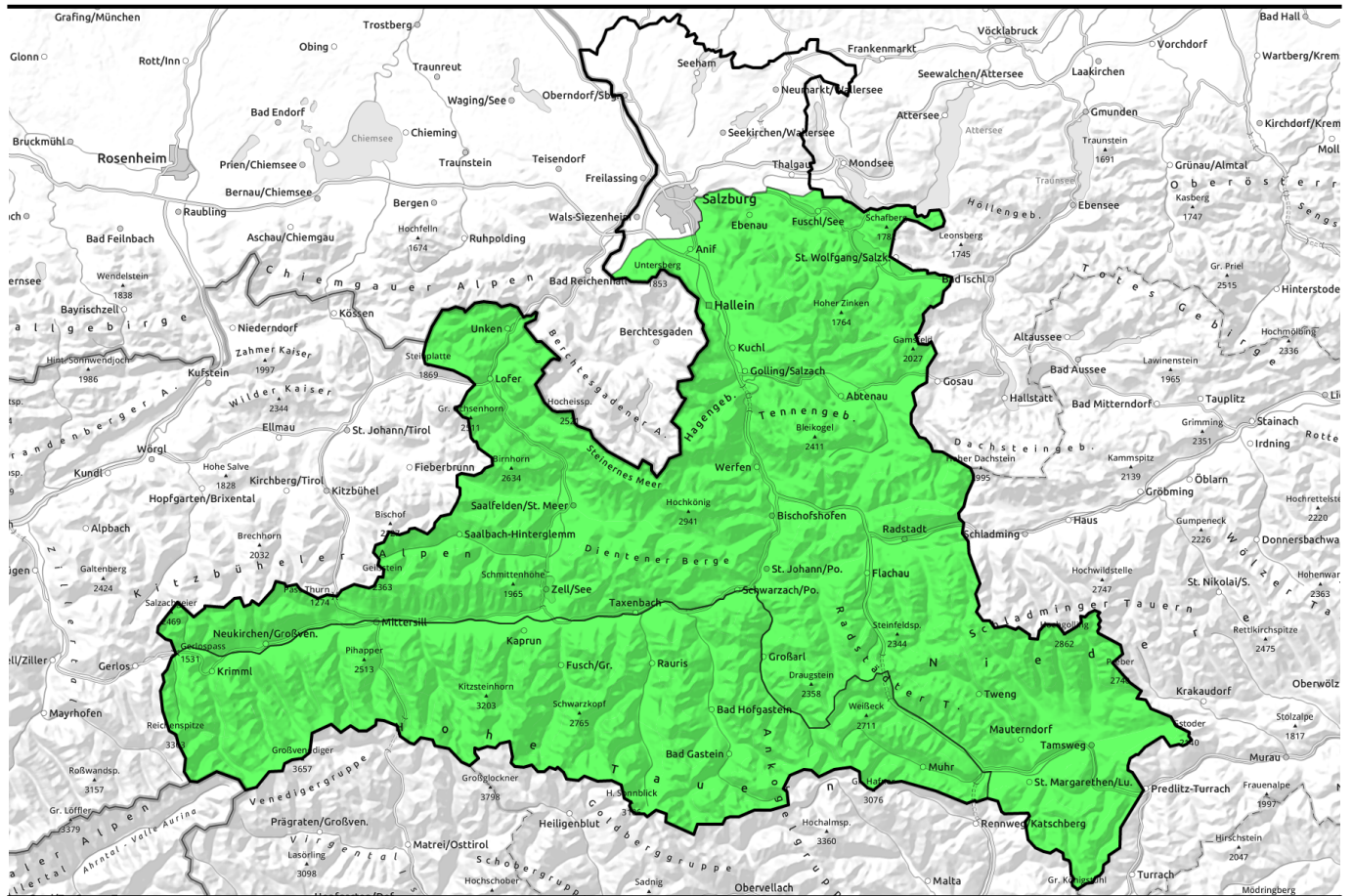


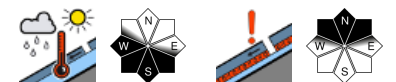
31.03.2021, morning



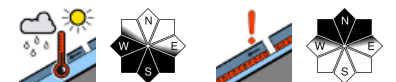
Really warm. Pay attention to naturally triggered avalanches.



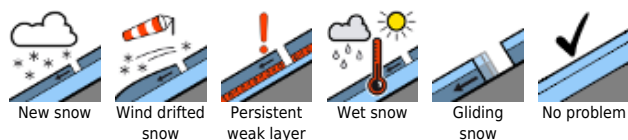
Großenedigergruppe Nord, Großenedigergruppe Alpenhauptkamm, Glocknergruppe Nord, Glocknergruppe Alpenhauptkamm, Goldberggruppe Nord, Ankogelgruppe, Muhr, Goldberggruppe Alpenhauptkamm



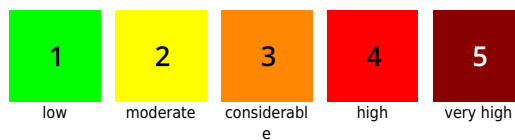
Osterhorngruppe, Gamsfeldgruppe, Untersbergstock, Steinernes Meer, Hochkönig, Hagengebirge, Göllstock, Tennengebirge, Gosaukamm, Chiemgauer Alpen, Heutal, Reiteralpe, Loferer und Leoganger Steinberge, Kitzbüheler Alpen, Glemmtal, Oberpinzgauer Grasberge, Dientner Grasberge, Pongauer Grasberge, Niedere Tauern Nord, Niedere Tauern Alpenhauptkamm, Niedere Tauern Süd, Nockberge



Avalanche problems



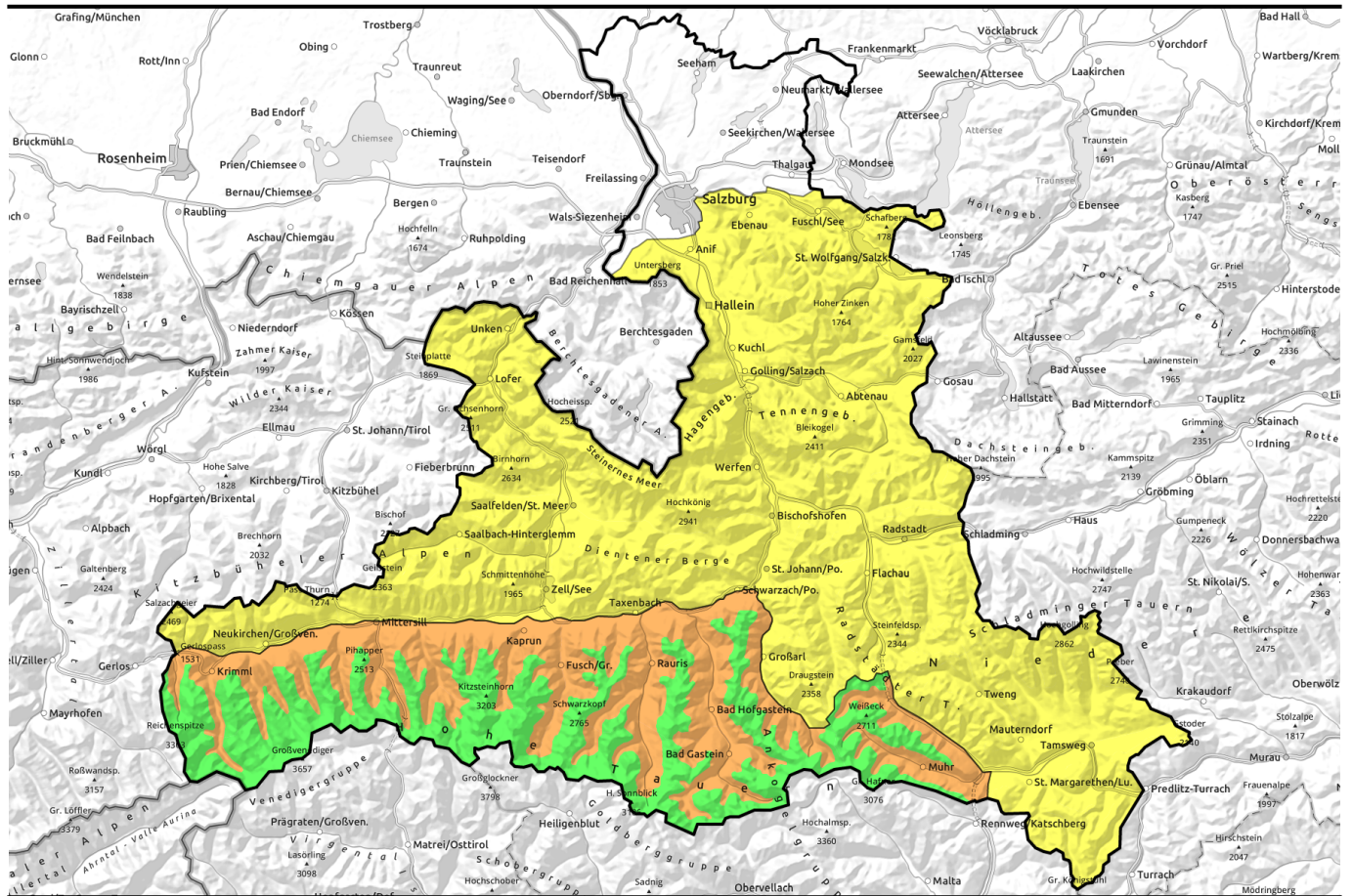
Danger ratings



Expositions



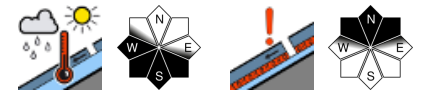
31.03.2021, afternoon



Ausgesprochen warm, an spontane Lawinen denken!



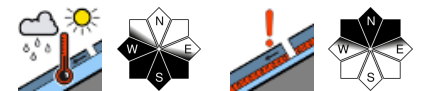
Großvenedigergruppe Nord, Großvenedigergruppe Alpenhauptkamm, Glocknergruppe Nord, Glocknergruppe Alpenhauptkamm, Goldberggruppe Nord, Ankogelgruppe, Muhr, Goldberggruppe Alpenhauptkamm



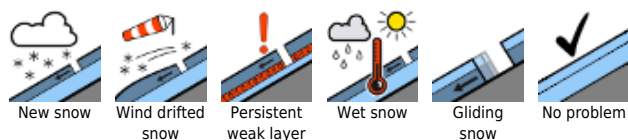
2800 m



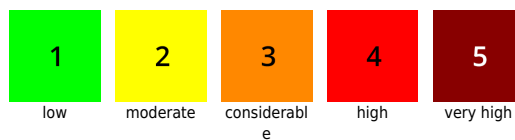
Osterhorngruppe, Gamsfeldgruppe, Untersbergstock, Steinernes Meer, Hochkönig, Hagengebirge, Göllstock, Tennengebirge, Gosaukamm, Chiemgauer Alpen, Heutal, Reiteralpe, Loferer und Leoganger Steinberge, Kitzbüheler Alpen, Glemmtal, Oberpinzgauer Grasberge, Dientner Grasberge, Pongauer Grasberge, Niedere Tauern Nord, Niedere Tauern Alpenhauptkamm, Niedere Tauern Süd, Nockberge



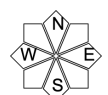
Avalanche problems



Danger ratings



Expositions



31.03.2021, morning

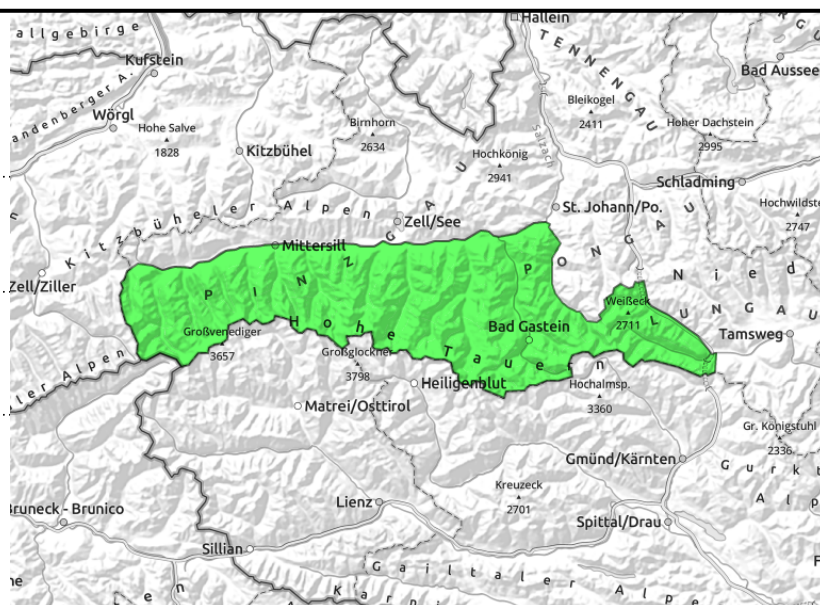
Großvenedigergruppe Nord, Großvenedigergruppe Alpenhauptkamm, Glocknergruppe Nord, Glocknergruppe Alpenhauptkamm, Goldberggruppe Nord, Ankogelgruppe, Muhr, Goldberggruppe Alpenhauptkamm



possible naturally triggered avalanches as of midday



triggerable on few spots in outlying terrain, extremely steep, shady, above 2300 m



Aspect + daytime cycle determine snow quality and risk

Wet-snow problem: shady slope tours are dry and hard. Pure west-facing slopes turn to firn rather late. **In morning, conditions are very favourable.** Firn snow develops and does not become deep at midday. In the afternoon, medium-sized, in south and southwestern terrain isolated large-sized wet-snow avalanches are possible. This applies to extremely steep terrain up to 2800 m. Frequent avalanche activity in rocky terrain or where the snow is shallow. In isolated cases, glide-snow avalanches.

Old-snow problem: an isolated, seldom slab can trigger in a few spots by large additional loading in extremely steep north-facing terrain above 2300 m. These slabs could in some circumstances grow to large size.

Snowpack structure

Good outgoing radiation will be possible at night, a hard melt-freeze crust will form on sunny slopes up to 2600 m, then soften to varying degrees during the daytime. In S/W aspects (SE-SW) the snowpack is thoroughly wet to a deeper level.

Above 2300 m on north-facing slopes there are isolated weak layers which formed in early March (before the recent heavy snowfall) which are well blanketed-over in most cases.

Weather

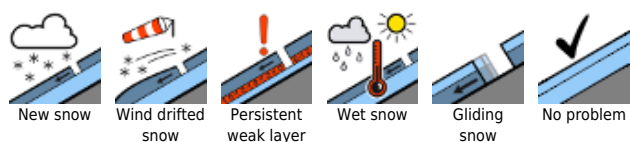
Also on **Wednesday**, stable and pleasant mountain weather continues. No wind, low moisture, intensive solar radiation. At 2000 m: up to 11 degrees; at 3000 m, plus 1 degrees.

On **Thursday**, similar conditions. In the afternoon, some harmless cumulus clouds will form above summit level.

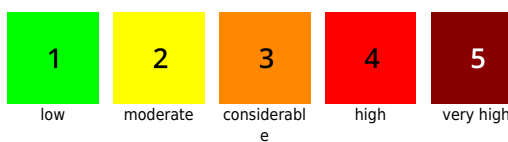
Outlook

No change. **Superb conditions for springtime backcountry tours.**

Avalanche problems



Danger ratings



Expositions



31.03.2021, afternoon

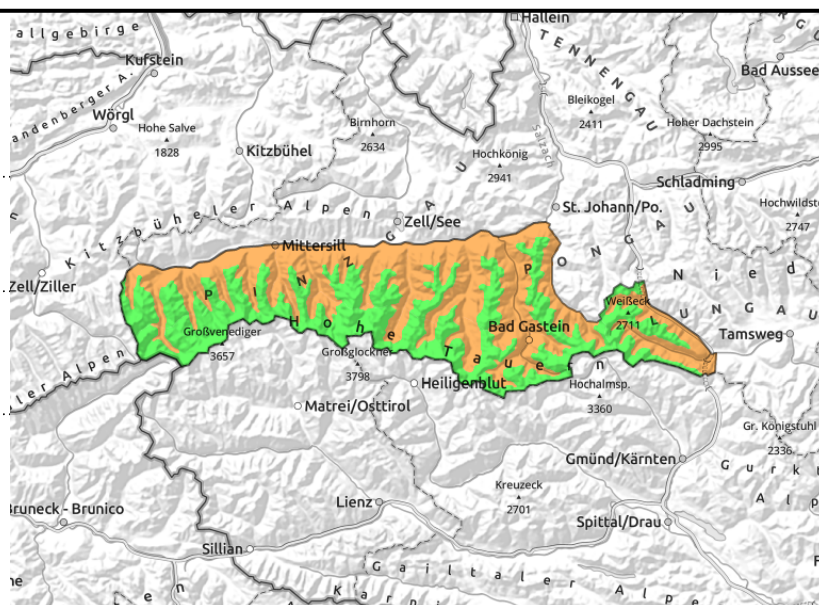
Großvenedigergruppe Nord, Großvenedigergruppe Alpenhauptkamm, Glocknergruppe Nord, Glocknergruppe Alpenhauptkamm, Goldberggruppe Nord, Ankogelgruppe, Muhr, Goldberggruppe Alpenhauptkamm



possible naturally triggered avalanches as of midday



triggerable on few spots in outlying terrain, extremely steep, shady, above 2300 m



Aspect + daytime cycle determine snow quality and risk

Wet-snow problem: shady slope tours are dry and hard. Pure west-facing slopes turn to firn rather late. **In morning, conditions are very favourable.** Firn snow develops and does not become deep at midday. In the afternoon, medium-sized, in south and southwestern terrain isolated large-sized wet-snow avalanches are possible. This applies to extremely steep terrain up to 2800 m. Frequent avalanche activity in rocky terrain or where the snow is shallow. In isolated cases, glide-snow avalanches.

Old-snow problem: an isolated, seldom slab can trigger in a few spots by large additional loading in extremely steep north-facing terrain above 2300 m. These slabs could in some circumstances grow to large size.

Snowpack structure

Good outgoing radiation will be possible at night, a hard melt-freeze crust will form on sunny slopes up to 2600 m, then soften to varying degrees during the daytime. In S/W aspects (SE-SW) the snowpack is thoroughly wet to a deeper level.

Above 2300 m on north-facing slopes there are isolated weak layers which formed in early March (before the recent heavy snowfall) which are well blanketed-over in most cases.

Weather

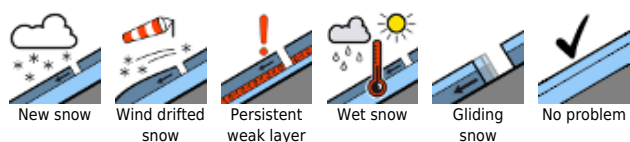
Also on **Wednesday**, stable and pleasant mountain weather continues. No wind, low moisture, intensive solar radiation. At 2000 m: up to 11 degrees; at 3000 m, plus 1 degrees.

On **Thursday**, similar conditions. In the afternoon, some harmless cumulus clouds will form above summit level.

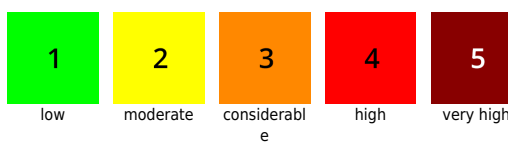
Outlook

No change. **Superb conditions for springtime backcountry tours.**

Avalanche problems



Danger ratings

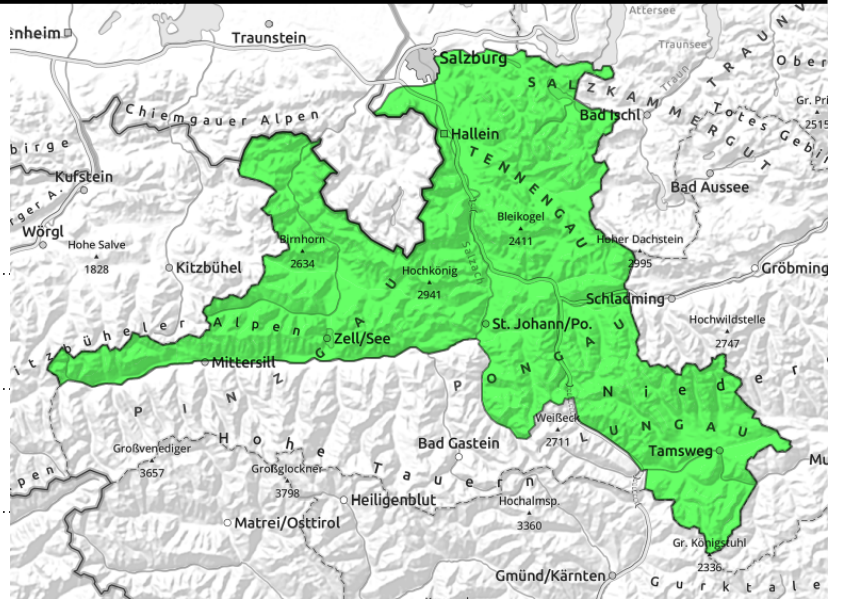


Expositions



31.03.2021, morning

Osterhorngruppe, Gamsfeldgruppe, Untersbergstock, Steinernes Meer, Hochkönig, Hagengebirge, Göllstock, Tennengebirge, Gosaukamm, Chiemgauer Alpen, Heutal, Reiteralpe, Loferer und Leoganger Steinberge, Kitzbüheler Alpen, Glemmtal, Oberpinzgauer Grasberge, Dientner Grasberge, Pongauer Grasberge, Niedere Tauern Nord, Niedere Tauern Alpenhauptkamm, Niedere Tauern Süd, Nockberge



possible naturally triggered avalanches as of midday



triggerable on few spots in outlying terrain, extremely steep, shady, above 2300 m

Aspect + daytime cycle determine snow quality and risk

Wet-snow problem: shady slope tours are dry and hard. Pure west-facing slopes turn to firm rather late. **In morning, conditions are very favourable.** Firm snow develops and does not become deep at midday. In the afternoon, medium-sized, in south and southwestern terrain isolated large-sized wet-snow avalanches are possible. This applies to extremely steep terrain up to 2800 m. Frequent avalanche activity in rocky terrain or where the snow is shallow. In isolated cases, glide-snow avalanches.

Old-snow problem: an isolated, seldom slab can trigger in a few spots by large additional loading in extremely steep north-facing terrain above 2300 m. These slabs could in some circumstances grow to large size.

Snowpack structure

Good outgoing radiation will be possible at night, a hard melt-freeze crust will form on sunny slopes up to 2600 m, then soften to varying degrees during the daytime. In S/W aspects (SE-SW) the snowpack is thoroughly wet to a deeper level.

Above 2300 m on north-facing slopes there are isolated weak layers which formed in early March (before the recent heavy snowfall) which are well blanketed-over in most cases.

Weather

Also on **Wednesday**, stable and pleasant mountain weather continues. No wind, low moisture, intensive solar radiation. At 2000 m: up to 11 degrees; at 3000 m, plus 1 degrees.

On **Thursday**, similar conditions. In the afternoon, some harmless cumulus clouds will form above above summit level.

Outlook

No change. **Superb conditions for springtime backcountry tours.**

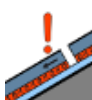
Avalanche problems



New snow



Wind drifted snow



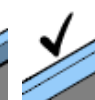
Persistent weak layer



Wet snow

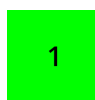


Gliding snow



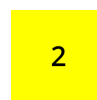
No problem

Danger ratings



1

low



2

moderate



3

considerable



4

high



5

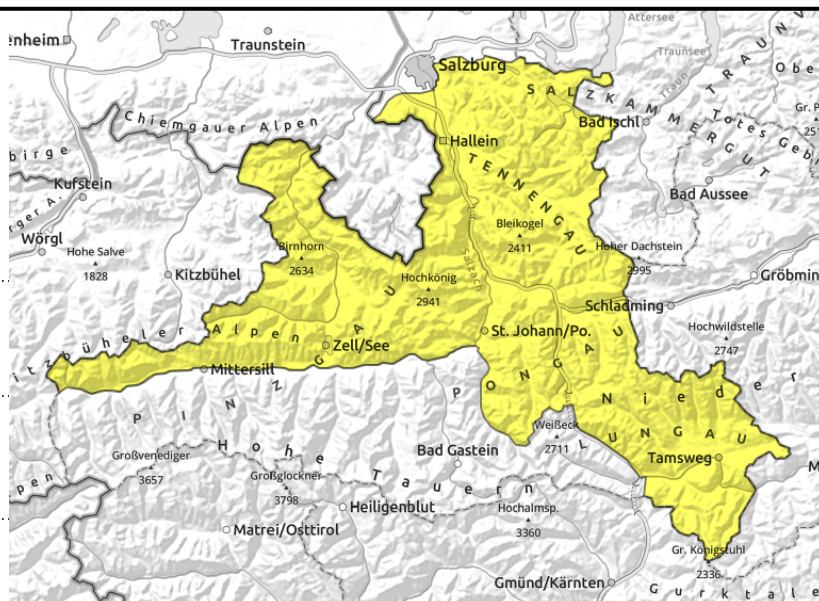
very high

Expositions



31.03.2021, afternoon

Osterhorngruppe, Gamsfeldgruppe, Untersbergstock, Steinernes Meer, Hochkönig, Hagengebirge, Göllstock, Tennengebirge, Gosaukamm, Chiemgauer Alpen, Heutal, Reiteralpe, Loferer und Leoganger Steinberge, Kitzbüheler Alpen, Glemmtal, Oberpinzgauer Grasberge, Dientner Grasberge, Pongauer Grasberge, Niedere Tauern Nord, Niedere Tauern Alpenhauptkamm, Niedere Tauern Süd, Nockberge



possible naturally triggered avalanches as of midday



triggerable on few spots in outlying terrain, extremely steep, shady, above 2300 m

Aspect + daytime cycle determine snow quality and risk

Wet-snow problem: shady slope tours are dry and hard. Pure west-facing slopes turn to firm rather late. **In morning, conditions are very favourable.** Firm snow develops and does not become deep at midday. In the afternoon, medium-sized, in south and southwestern terrain isolated large-sized wet-snow avalanches are possible. This applies to extremely steep terrain up to 2800 m. Frequent avalanche activity in rocky terrain or where the snow is shallow. In isolated cases, glide-snow avalanches.

Old-snow problem: an isolated, seldom slab can trigger in a few spots by large additional loading in extremely steep north-facing terrain above 2300 m. These slabs could in some circumstances grow to large size.

Snowpack structure

Good outgoing radiation will be possible at night, a hard melt-freeze crust will form on sunny slopes up to 2600 m, then soften to varying degrees during the daytime. In S/W aspects (SE-SW) the snowpack is thoroughly wet to a deeper level.

Above 2300 m on north-facing slopes there are isolated weak layers which formed in early March (before the recent heavy snowfall) which are well blanketed-over in most cases.

Weather

Also on **Wednesday**, stable and pleasant mountain weather continues. No wind, low moisture, intensive solar radiation. At 2000 m: up to 11 degrees; at 3000 m, plus 1 degrees.

On **Thursday**, similar conditions. In the afternoon, some harmless cumulus clouds will form above above summit level.

Outlook

No change. **Superb conditions for springtime backcountry tours.**

Translated by Jeffrey McCabe, www.creativtrans.com

Avalanche problems



Danger ratings



Expositions

