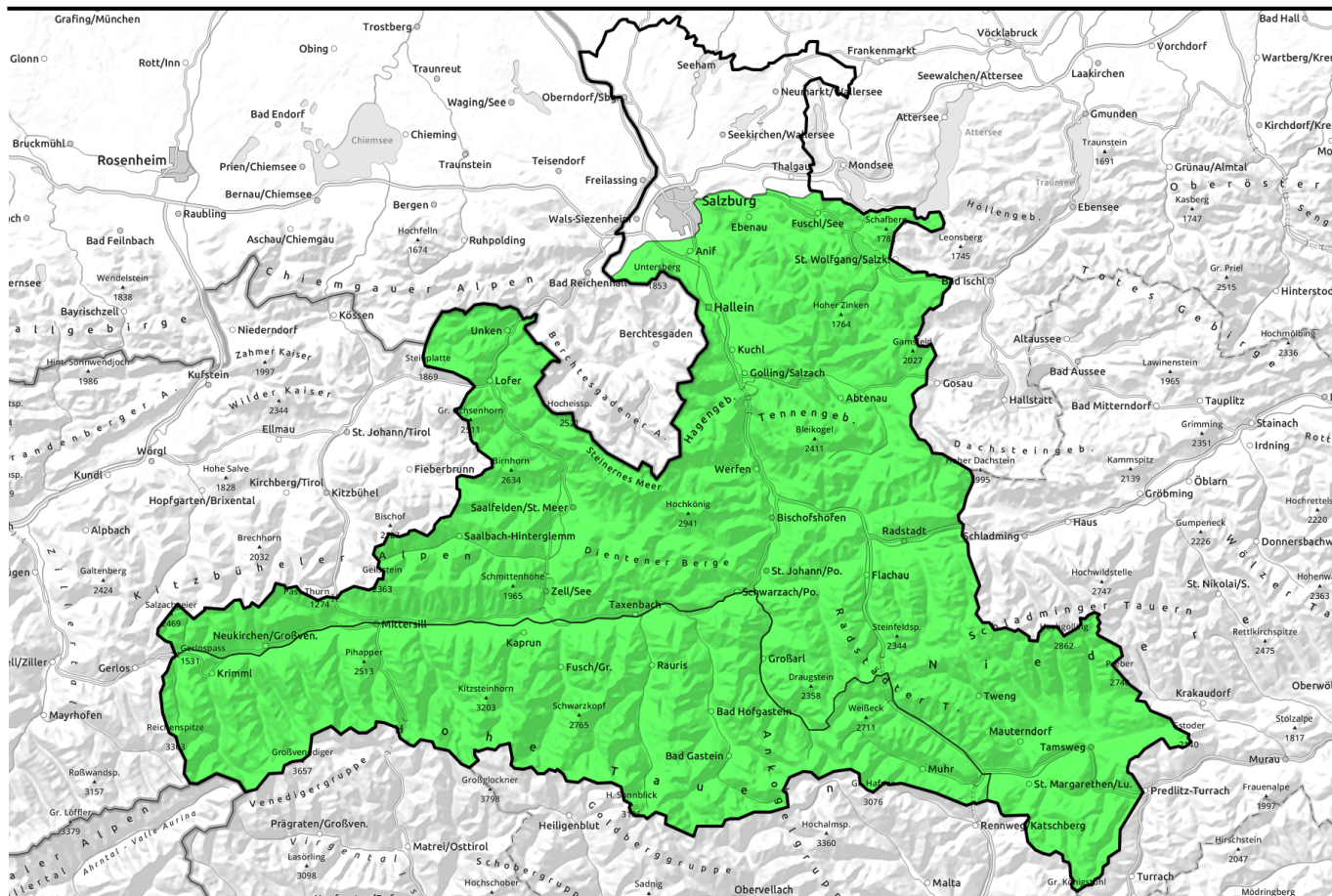


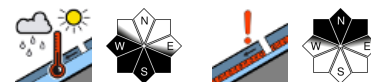
30.03.2021, morning



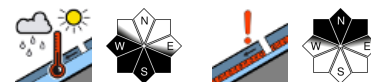
Intensive radiation, pay attention to naturally triggered avalanches!



Großenedigergruppe Nord, Großenedigergruppe Alpenhauptkamm, Glocknergruppe Nord, Glocknergruppe Alpenhauptkamm, Goldberggruppe Nord, Goldberggruppe Alpenhauptkamm, Ankogelgruppe, Muhr



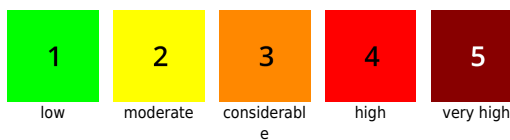
Osterhorngruppe, Gamsfeldgruppe, Untersbergstock, Steinernes Meer, Hochkönig, Hagengebirge, Göllstock, Tennengebirge, Gosaukamm, Pongauer Grasberge, Dientner Berge, Kitzbüheler Alpen, Gemmtal, Loferer und Leoganger Steinberge, Chiemgauer Alpen, Heutal, Reiteralpe, Oberpinzgauer Grasberge, Niedere Tauern Nord, Niedere Tauern Alpenhauptkamm, Niedere Tauern Süd, Nockberge



Avalanche problems



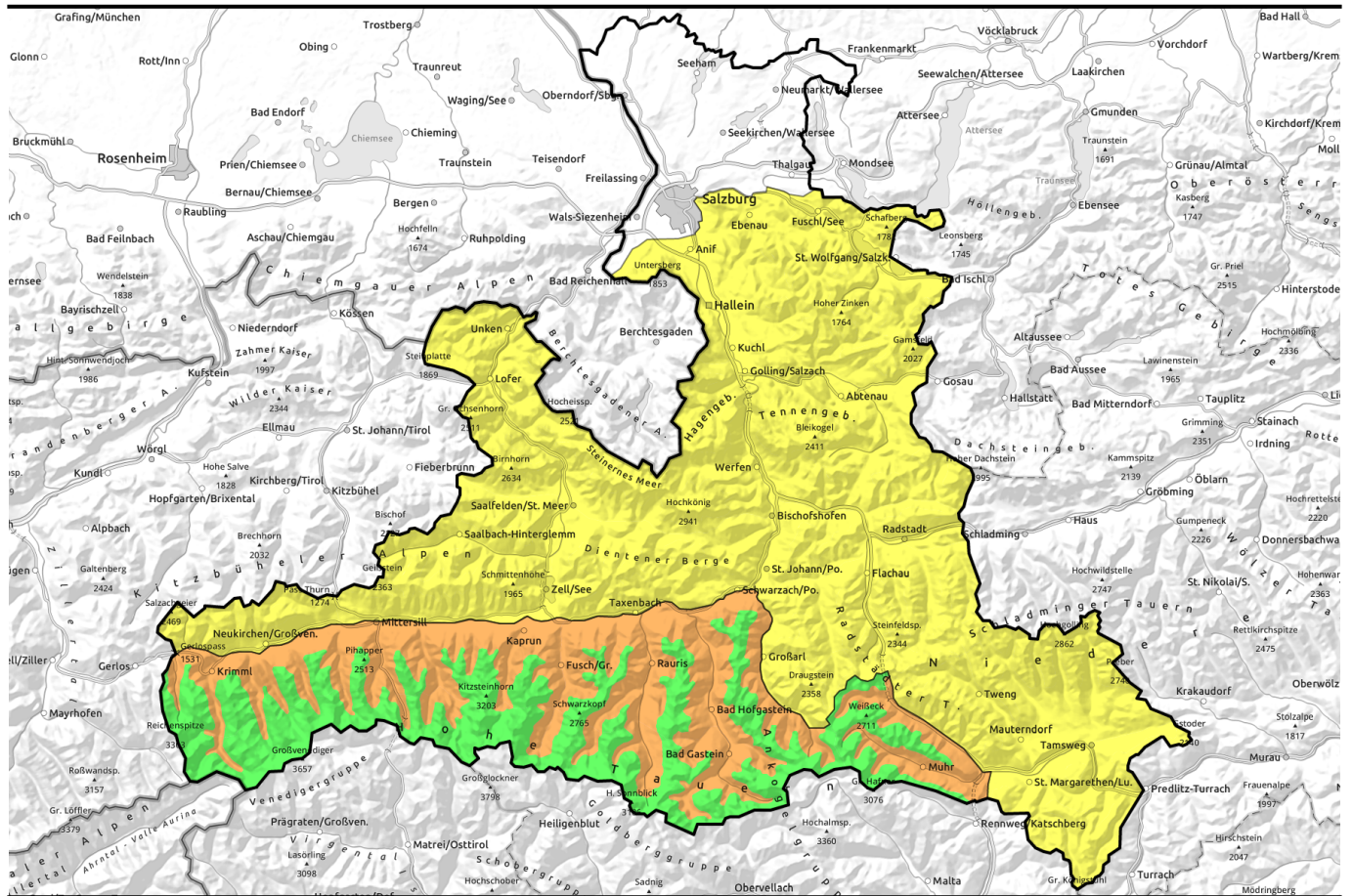
Danger ratings



Expositions



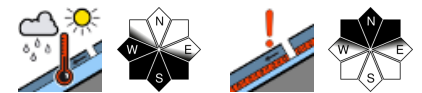
30.03.2021, afternoon



Intensive Strahlung, an spontane Lawinen denken!



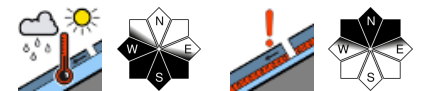
Großvenedigergruppe Nord, Großvenedigergruppe Alpenhauptkamm, Glocknergruppe Nord, Glocknergruppe Alpenhauptkamm, Goldberggruppe Nord, Goldberggruppe Alpenhauptkamm, Ankogelgruppe, Muhr



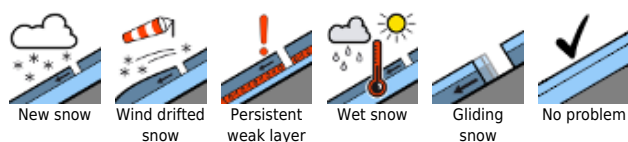
2800 m



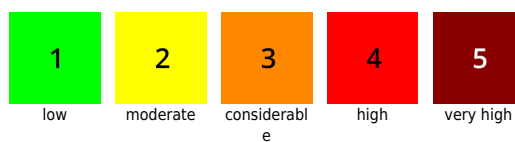
Osterhorngruppe, Gamsfeldgruppe, Untersbergstock, Steinernes Meer, Hochkönig, Hagengebirge, Göllstock, Tennengebirge, Gosaukamm, Pongauer Grasberge, Dientner Grasberge, Kitzbüheler Alpen, Glemmtal, Loferer und Leoganger Steinberge, Chiemgauer Alpen, Heutal, Reiteralpe, Oberpinzgauer Grasberge, Niedere Tauern Nord, Niedere Tauern Alpenhauptkamm, Niedere Tauern Süd, Nockberge



Avalanche problems



Danger ratings

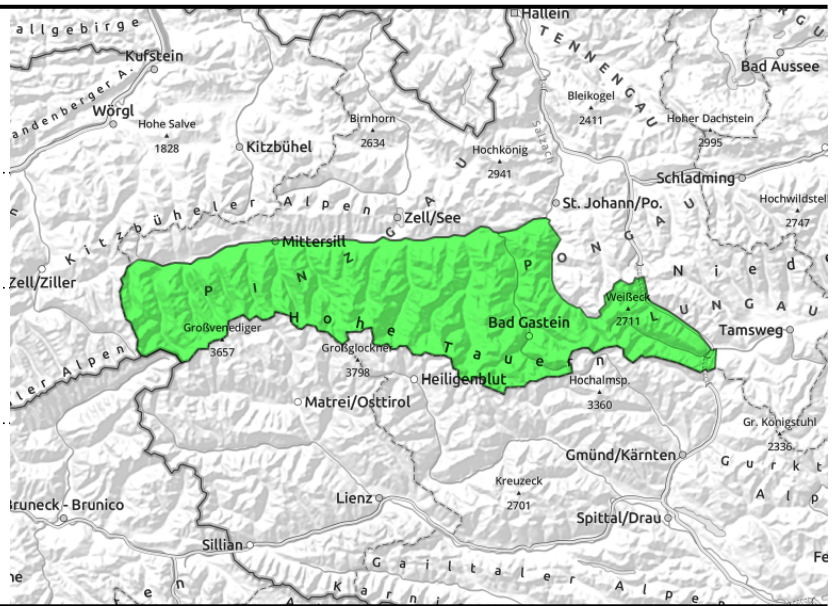


Expositions



30.03.2021, morning

Großvenedigergruppe Nord, Großvenedigergruppe Alpenhauptkamm, Glocknergruppe Nord, Glocknergruppe Alpenhauptkamm, Goldberggruppe Nord, Goldberggruppe Alpenhauptkamm, Ankogelgruppe, Muhr



Daytime cycle of naturally triggered avalanches, starting at midday



few spots in outlying terrain triggerable, on extremely steep, shady slopes above 2300 m

Backcountry tours: plan them with care to aspect and time frame!!

Wet-snow problem: shady slope tours are dry and hard. Pure west-facing slopes turn to firn rather late. In the morning, conditions are very favourable. Firn snow develops and does not become deep at midday. In the afternoon, medium-sized, in south and southwestern terrain isolated large-sized wet-snow avalanches are possible. This applies to extremely steep terrain up to 2800 m. Frequent avalanche activity in rocky terrain or where the snow is shallow. In isolated cases, glide-snow avalanches.

Old-snow problem: an isolated, seldom slab can trigger in a few spots by large additional loading in extremely steep north-facing terrain above 2300 m. These slabs could in some circumstances grow to large size.

Snowpack structure

Nocturnal skies were clear, outgoing longwave radiation was adequate, a hard melt-freeze crust formed up to 2600 m on sunny slopes which then softened to differing degrees during the course of the day. On south-facing and west-facing slopes (S-SW) the snowpack is becoming thoroughly wet down to deeper levels.

Above 2300 m on north-facing slopes there are isolated weak layers from the early part of March embedded in the snowpack, i.e. from prior to the heavy snowfall of last week, which is well blanketed-over in the interim.

Weather

On **Tuesday**, terrific mountain weather. Outstanding visibility, hardly any wind, low air moisture. The sun will be warm, on shady slopes significantly cooler. At 2000 m at midday: up to +10 degrees; at 3000 m, +1 degree.

On **Wednesday**, following a night of clear skies, the same conditions as on Tuesday will continue.

Outlook

No change. **Superb conditions for springtime backcountry tours.** Aspect and daytime danger cycle decide about snow quality and risk level.

Avalanche problems



New snow



Wind drifted snow



Persistent weak layer



Wet snow



Gliding snow



No problem

Danger ratings



1

low



2

moderate



3

considerable



4

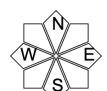
high



5

very high


Expositions

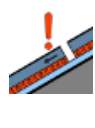


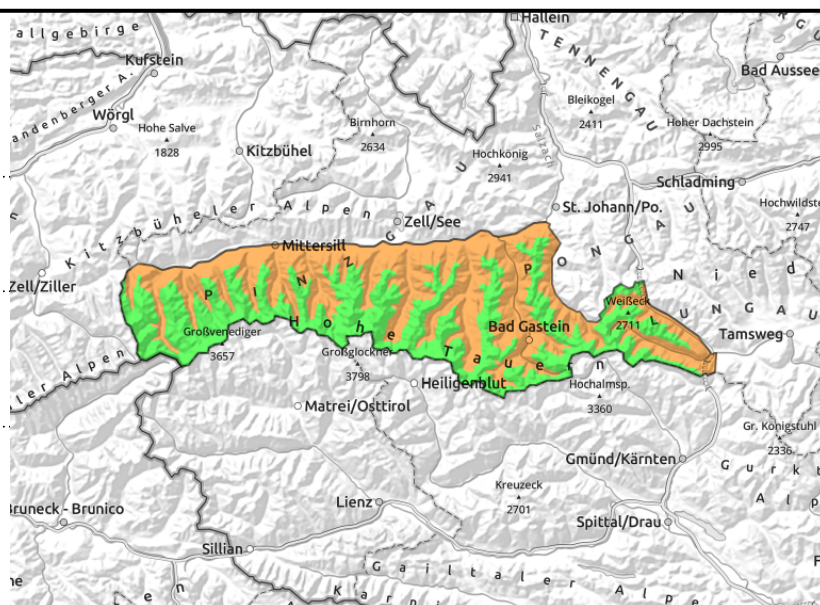
30.03.2021, afternoon

Großvenedigergruppe Nord, Großvenedigergruppe Alpenhauptkamm, Glocknergruppe Nord, Glocknergruppe Alpenhauptkamm, Goldberggruppe Nord, Goldberggruppe Alpenhauptkamm, Ankogelgruppe, Muhr



 Daytime cycle of naturally triggered avalanches, starting at midday

 few spots in outlying terrain triggerable, on extremely steep, shady slopes above 2300 m



Backcountry tours: plan them with care to aspect and time frame!!

Wet-snow problem: shady slope tours are dry and hard. Pure west-facing slopes turn to firn rather late. In the morning, conditions are very favourable. Firn snow develops and does not become deep at midday. In the afternoon, medium-sized, in south and southwestern terrain isolated large-sized wet-snow avalanches are possible. This applies to extremely steep terrain up to 2800 m. Frequent avalanche activity in rocky terrain or where the snow is shallow. In isolated cases, glide-snow avalanches.

Old-snow problem: an isolated, seldom slab can trigger in a few spots by large additional loading in extremely steep north-facing terrain above 2300 m. These slabs could in some circumstances grow to large size.

Snowpack structure

Nocturnal skies were clear, outgoing longwave radiation was adequate, a hard melt-freeze crust formed up to 2600 m on sunny slopes which then softened to differing degrees during the course of the day. On south-facing and west-facing slopes (S-SW) the snowpack is becoming thoroughly wet down to deeper levels.

Above 2300 m on north-facing slopes there are isolated weak layers from the early part of March embedded in the snowpack, i.e. from prior to the heavy snowfall of last week, which is well blanketed-over in the interim.

Weather

On **Tuesday**, terrific mountain weather. Outstanding visibility, hardly any wind, low air moisture. The sun will be warm, on shady slopes significantly cooler. At 2000 m at midday: up to +10 degrees; at 3000 m, +1 degree.

On **Wednesday**, following a night of clear skies, the same conditions as on Tuesday will continue.

Outlook

No change. **Superb conditions for springtime backcountry tours.** Aspect and daytime danger cycle decide about snow quality and risk level.

Avalanche problems



Danger ratings

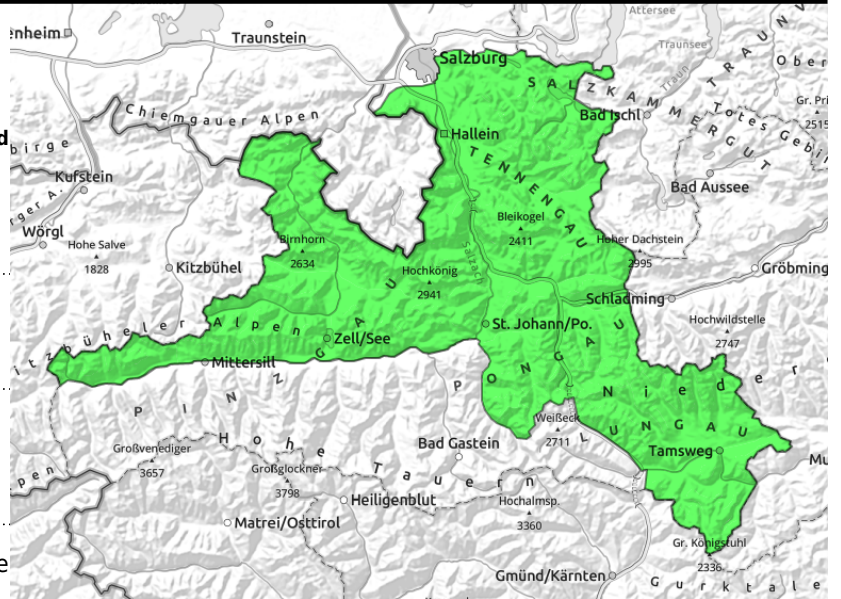


Expositions



30.03.2021, morning

Osterhorngruppe, Gamsfeldgruppe, Untersbergstock, Steinernes Meer, Hochkönig, Hagengebirge, Göllstock, Tennengebirge, Gosaukamm, Pongauer Grasberge, Dientner Grasberge, Kitzbüheler Alpen, Glemmtal, Loferer und Leoganger Steinberge, Chiemgauer Alpen, Heutal, Reiteralpe, Oberpinzgauer Grasberge, Niedere Tauern Nord, Niedere Tauern Alpenhauptkamm, Niedere Tauern Süd, Nockberge



Daytime cycle of naturally triggered avalanches, important starting at midday



few spots in outlying terrain are triggerable, on extremely steep, shady slopes above 2300 m

Backcountry tours: plan them with care to aspect and time frame!!

Wet-snow problem: shady slope tours are dry and hard. Pure west-facing slopes turn to firn rather late. In the morning, conditions are very favourable. Firn snow develops and does not become deep at midday. In the afternoon, medium-sized, in south and southwestern terrain isolated large-sized wet-snow avalanches are possible. This applies to extremely steep terrain up to 2800 m. Frequent avalanche activity in rocky terrain or where the snow is shallow. In isolated cases, glide-snow avalanches.

Old-snow problem: an isolated, seldom slab can trigger in a few spots by large additional loading in extremely steep north-facing terrain above 2300 m. These slabs could in some circumstances grow to large size.

Snowpack structure

The snowpack was able to let loose adequate outgoing longwave radiation during the nighttime hours. On sunny slopes there is a melt-freeze crust which then softens to varying degrees during the daytime. On south-facing and west-facing slopes (S-SW) the snowpack is becoming thoroughly wet down to deeper levels.

Above 2300 m on north-facing slopes there are isolated weak layers from the early part of March embedded in the snowpack, i.e. from prior to the heavy snowfall of last week, which is well blanketed-over in the interim.

Weather

On **Tuesday**, terrific mountain weather. Outstanding visibility, hardly any wind, low air moisture. The sun will be warm, on shady slopes significantly cooler. At 2000 m at midday: up to +10 degrees; at 3000 m, +1 degree.

On **Wednesday**, following a night of clear skies, the same conditions as on Tuesday will continue.

Outlook

No change. **Superb conditions for springtime backcountry tours.** Aspect and daytime danger

Avalanche problems



New snow



Wind drifted snow



Persistent weak layer



Wet snow



Gliding snow



No problem

Danger ratings



1

low



2

moderate



3

considerable



4

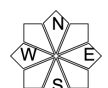
high



5

very high

Expositions



30.03.2021, morning

cycle decide about snow quality and risk level.

Avalanche problems



New snow



Wind drifted
snow



Persistent
weak layer



Wet snow



Gliding
snow



No problem

Danger ratings



1

low



2

moderate



3

considerabl
e



4

high



5

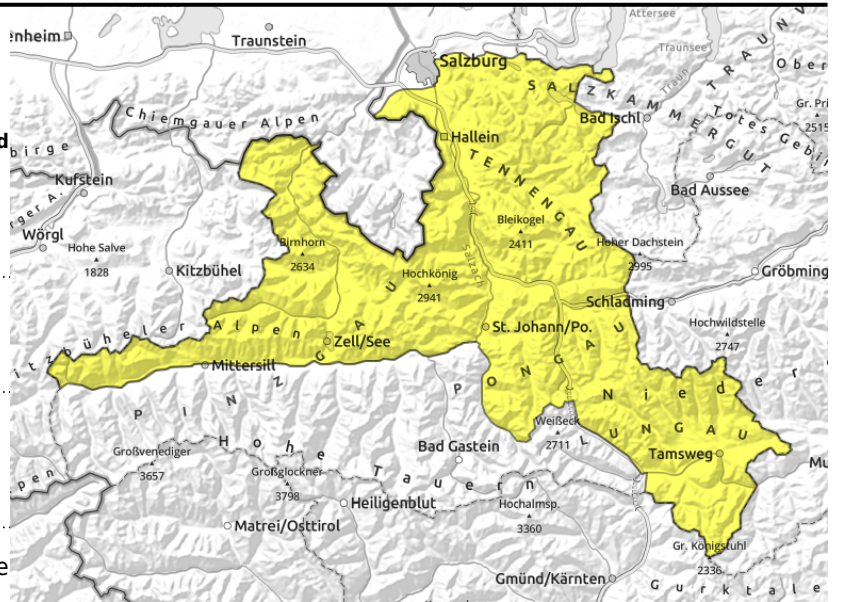
very high

Expositions



30.03.2021, afternoon

Osterhorngruppe, Gamsfeldgruppe, Untersbergstock, Steinernes Meer, Hochkönig, Hagengebirge, Göllstock, Tennengebirge, Gosaukamm, Pongauer Grasberge, Dientner Grasberge, Kitzbüheler Alpen, Glemmtal, Loferer und Leoganger Steinberge, Chiemgauer Alpen, Heutal, Reiteralpe, Oberpinzgauer Grasberge, Niedere Tauern Nord, Niedere Tauern Alpenhauptkamm, Niedere Tauern Süd, Nockberge



Daytime cycle of naturally triggered avalanches, important starting at midday



few spots in outlying terrain are triggerable, on extremely steep, shady slopes above 2300 m

Backcountry tours: plan them with care to aspect and time frame!!

Wet-snow problem: shady slope tours are dry and hard. Pure west-facing slopes turn to firn rather late. In the morning, conditions are very favourable. Firn snow develops and does not become deep at midday. In the afternoon, medium-sized, in south and southwestern terrain isolated large-sized wet-snow avalanches are possible. This applies to extremely steep terrain up to 2800 m. Frequent avalanche activity in rocky terrain or where the snow is shallow. In isolated cases, glide-snow avalanches.

Old-snow problem: an isolated, seldom slab can trigger in a few spots by large additional loading in extremely steep north-facing terrain above 2300 m. These slabs could in some circumstances grow to large size.

Snowpack structure

The snowpack was able to let loose adequate outgoing longwave radiation during the nighttime hours. On sunny slopes there is a melt-freeze crust which then softens to varying degrees during the daytime. On south-facing and west-facing slopes (S-SW) the snowpack is becoming thoroughly wet down to deeper levels.

Above 2300 m on north-facing slopes there are isolated weak layers from the early part of March embedded in the snowpack, i.e. from prior to the heavy snowfall of last week, which is well blanketed-over in the interim.

Weather

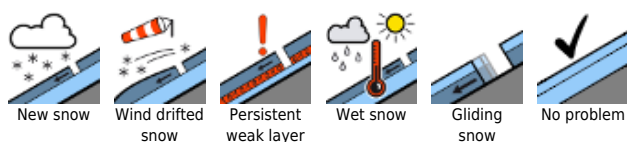
On **Tuesday**, terrific mountain weather. Outstanding visibility, hardly any wind, low air moisture. The sun will be warm, on shady slopes significantly cooler. At 2000 m at midday: up to +10 degrees; at 3000 m, +1 degree.

On **Wednesday**, following a night of clear skies, the same conditions as on Tuesday will continue.

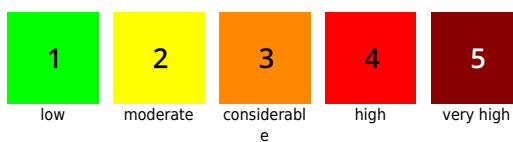
Outlook

No change. **Superb conditions for springtime backcountry tours.** Aspect and daytime danger

Avalanche problems



Danger ratings



Expositions



30.03.2021, afternoon

cycle decide about snow quality and risk level.

Translated by Jeffrey McCabe, www.creativtrans.com

Avalanche problems



New snow



Wind drifted
snow



Persistent
weak layer



Wet snow



Gliding
snow



No problem

Danger ratings



1

low



2

moderate



3

considerabl
e



4

high



5

very high

Expositions

