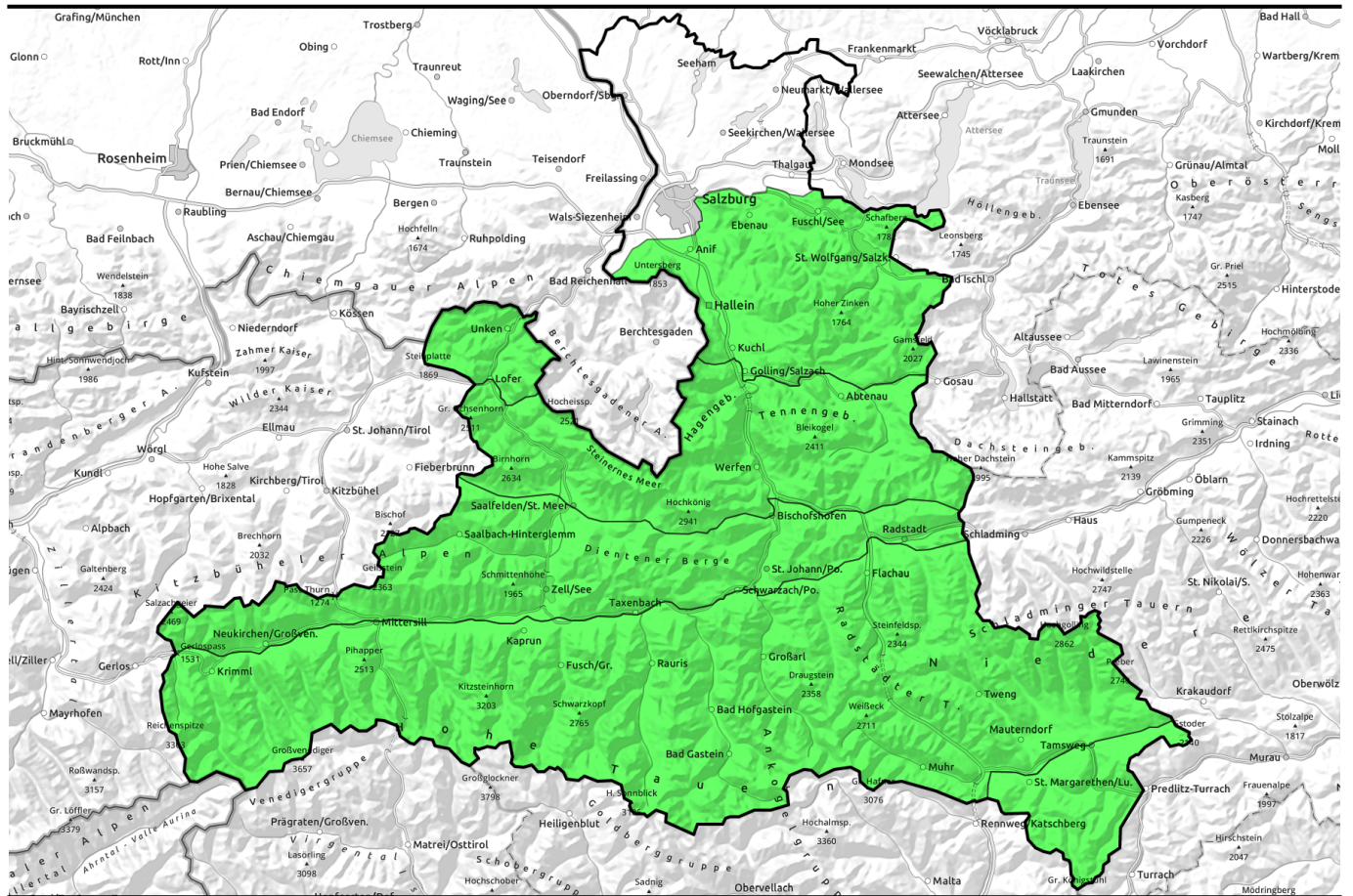


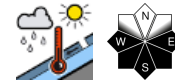
29.03.2021, morning



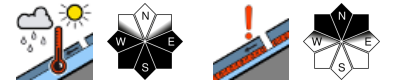
Be attentive to daytime danger cycle



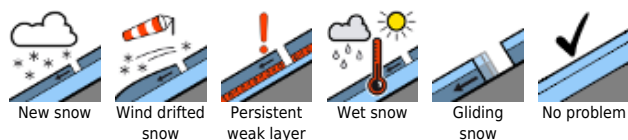
Chiemgauer Alpen, Heutal, Reiteralpe, Untersbergstock, Osterhorngruppe, Gamsfeldgruppe, Kitzbüheler Alpen, Glemmtal, Dientner Grasberge, Pongauer Grasberge, Oberpinzgauer Grasberge, Nockberge



Loferer und Leoganger Steinberge, Steinernes Meer, Hochkönig, Hagengebirge, Göllstock, Tennengebirge, Gosaukamm, Großvenedigergruppe Nord, Großvenedigergruppe Alpenhauptkamm, Glocknergruppe Nord, Glocknergruppe Alpenhauptkamm, Goldberggruppe Nord, Goldberggruppe Alpenhauptkamm, Niedere Tauern Alpenhauptkamm, Ankogelgruppe, Muhr, Niedere Tauern Süd, Niedere Tauern Nord



Avalanche problems



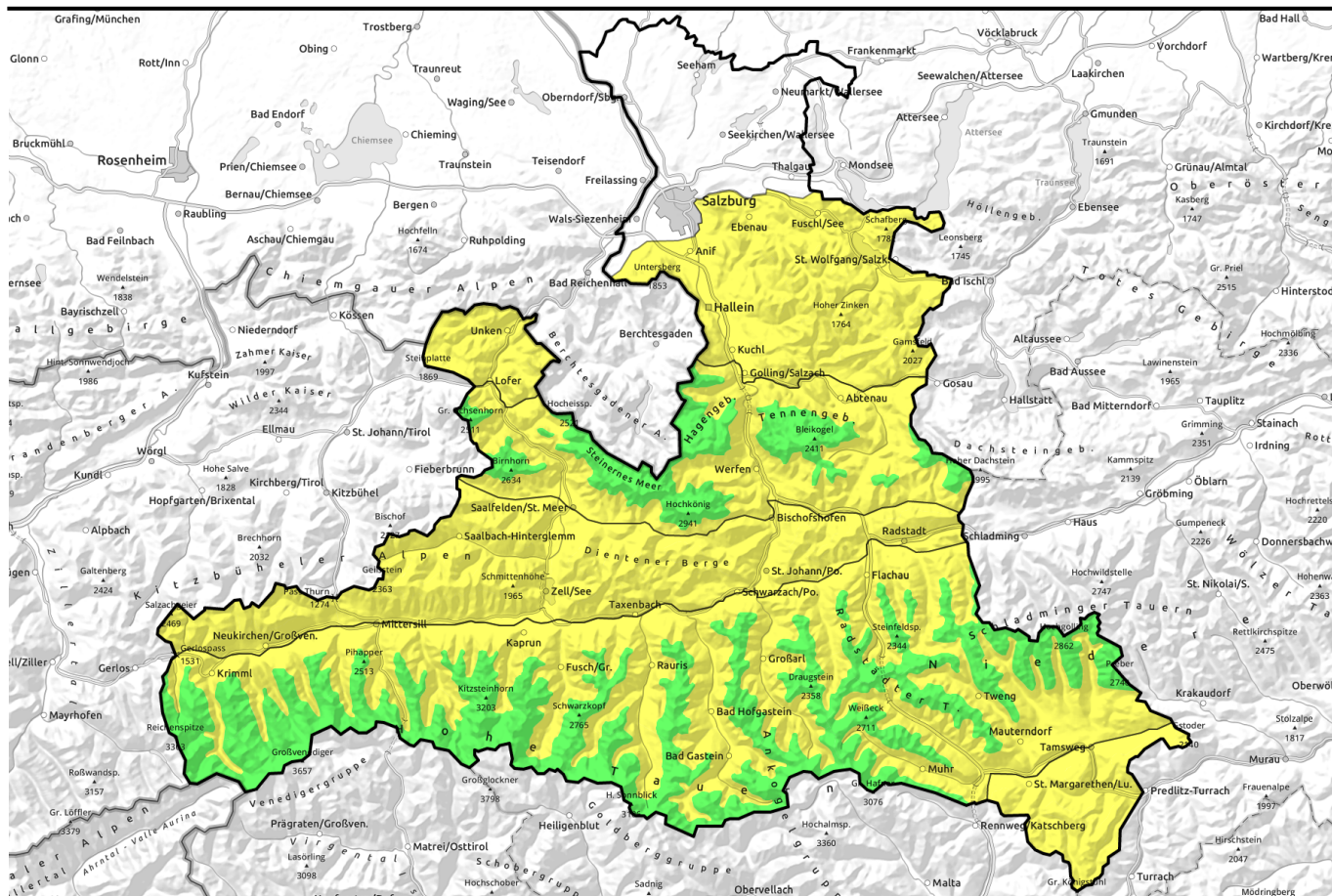
Danger ratings



Expositions



29.03.2021, afternoon



Tagesgang beachten



Chiemgauer Alpen, Heutal, Reiteralpe, Untersbergstock, Osterhorngruppe, Gamsfeldgruppe, Kitzbüheler Alpen, Glemmtal, Dientner Grasberge, Pongauer Grasberge, Oberpinzgauer Grasberge, Nockberge

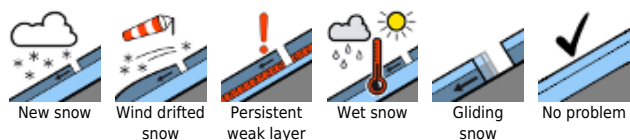


Loferer und Leoganger Steinberge, Steinernes Meer, Hochkönig, Hagengebirge, Göllstock, Tennengebirge, Gosaukamm, Großvenedigergruppe Nord, Großvenedigergruppe Alpenhauptkamm, Glocknergruppe Nord, Glocknergruppe Alpenhauptkamm, Goldberggruppe Nord, Goldberggruppe Alpenhauptkamm, Niedere Tauern Alpenhauptkamm, Ankogelgruppe, Muhr, Niedere Tauern Süd, Niedere Tauern Nord

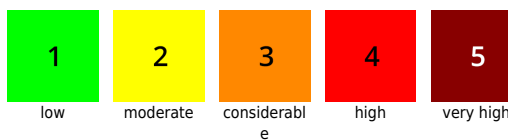


2400 m

Avalanche problems



Danger ratings

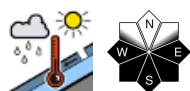


Expositions

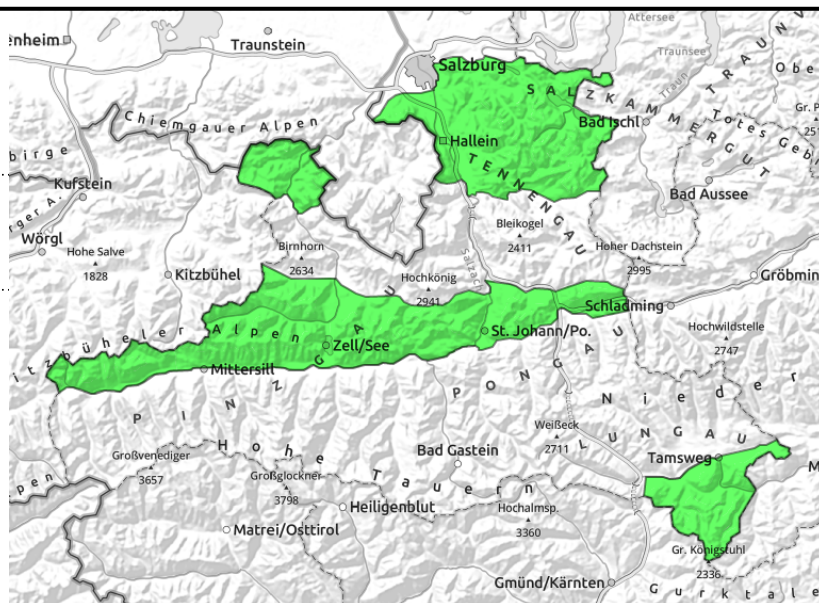


29.03.2021, morning

Chiemgauer Alpen, Heutal, Reiteralpe, Untersbergstock, Osterhorngruppe, Gamsfeldgruppe, Kitzbüheler Alpen, Glemmtal, Dientner Grasberge, Pongauer Grasberge, Oberpinzgauer Grasberge, Nockberge



Daytime cycle of naturally triggered avalanche activity



Slight danger cycle due to daytime warmth

In the morning, favourable conditions. In the afternoon, small-to-medium wet-snow avalanches in sunny extremely steep terrain are possible. These can also be triggered by winter sports enthusiasts. In isolated cases, small glide-snow avalanches.

Snowpack structure

The snowpack has settled well and is stable. All types of snow can be found on the snowpack surface, depending on aspect, altitude and time of day: old powder, firn, corn snow, interspersed by all kinds of crusts) During the day there is a crust capable of bearing loads which turns to firn snow.

Weather

On Monday, good visibility, sunshine. Intermittent thin clouds will pass through above summit level. Winds will remain light. At midday at 1500 m: +7 degrees.

Outlook

Heed the daytime danger cycle.

Avalanche problems



Danger ratings

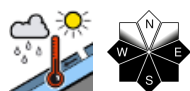


Expositions

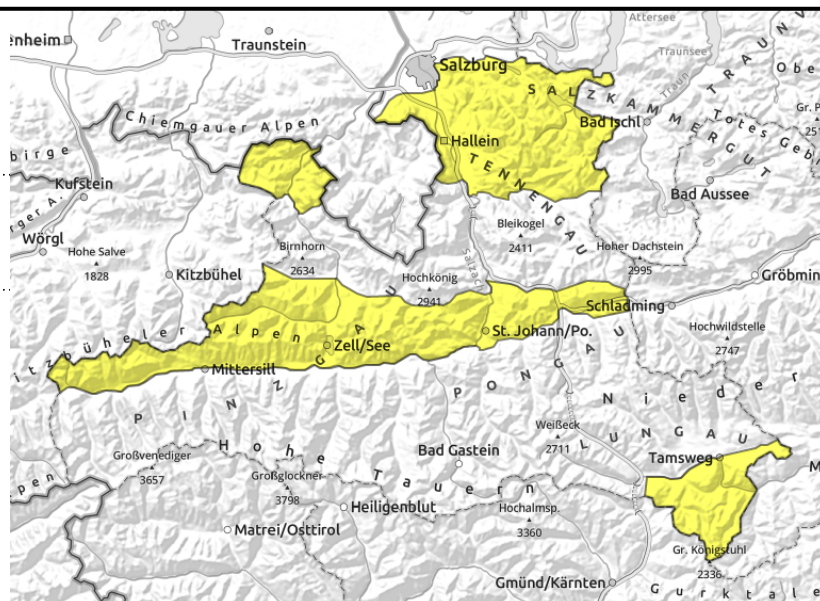


29.03.2021, afternoon

Chiemgauer Alpen, Heutal, Reiteralpe, Untersbergstock, Osterhorngruppe, Gamsfeldgruppe, Kitzbüheler Alpen, Glemmtal, Dientner Grasberge, Pongauer Grasberge, Oberpinzgauer Grasberge, Nockberge



Daytime cycle of naturally triggered avalanche activity



Slight danger cycle due to daytime warmth

In the morning, favourable conditions. In the afternoon, small-to-medium wet-snow avalanches in sunny extremely steep terrain are possible. These can also be triggered by winter sports enthusiasts. In isolated cases, small glide-snow avalanches.

Snowpack structure

The snowpack has settled well and is stable. All types of snow can be found on the snowpack surface, depending on aspect, altitude and time of day: old powder, firn, corn snow, interspersed by all kinds of crusts) During the day there is a crust capable of bearing loads which turns to firn snow.

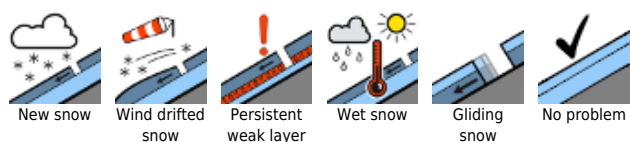
Weather

On Monday, good visibility, sunshine. Intermittent thin clouds will pass through above summit level. Winds will remain light. At midday at 1500 m: +7 degrees.

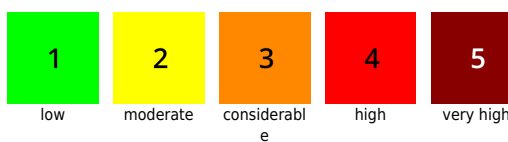
Outlook

Heed the daytime danger cycle.

Avalanche problems



Danger ratings

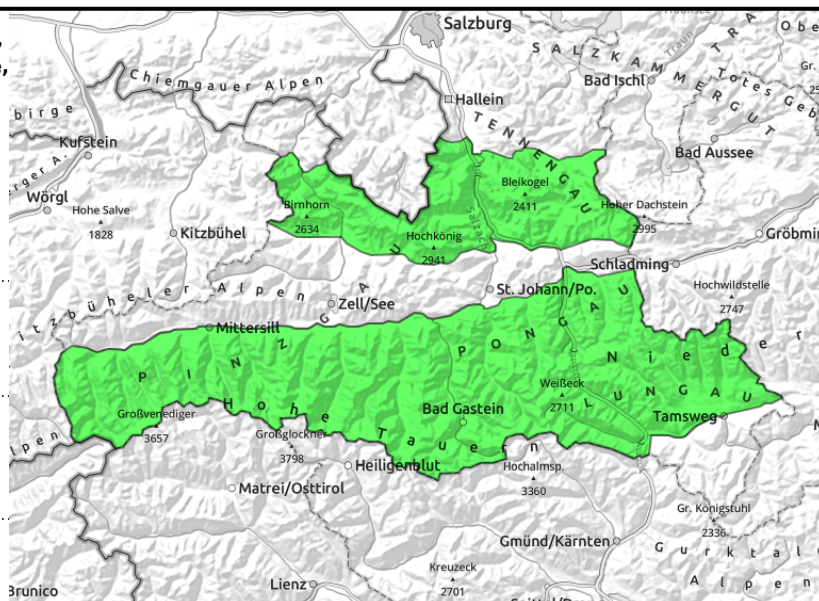


Expositions



29.03.2021, morning

Loferer und Leoganger Steinberge, Steinernes Meer, Hochkönig, Hagengebirge, Göllstock, Tennengebirge, Gosaukamm, Großvenedigergruppe Nord, Großvenedigergruppe Alpenhauptkamm, Glocknergruppe Nord, Glocknergruppe Alpenhauptkamm, Goldberggruppe Nord, Goldberggruppe Alpenhauptkamm, Niedere Tauern Alpenhauptkamm, Ankogelgruppe, Muhr, Niedere Tauern Süd, Niedere Tauern Nord



Daytime cycle of naturally triggered avalanche activity



triggerable in few spots in outlying terrain

Slight danger cycle due to daytime warmth

In the morning, favourable conditions. In the afternoon, small-to-medium wet-snow avalanches in sunny extremely steep terrain are possible. These can also be triggered by winter sports enthusiasts. In isolated cases, small glide-snow avalanches.

A slab can in isolated cases trigger in steep shady terrain above 2300 m.

Snowpack structure

The snowpack has settled well and is stable. All types of snow can be found on the snowpack surface, depending on aspect, altitude and time of day: old powder, firn, corn snow, interspersed by all kinds of crusts) During the day there is a crust capable of bearing loads which turns to firn snow.

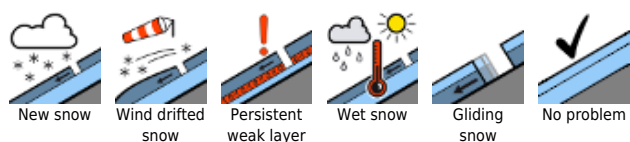
Weather

On Monday, good visibility, sunshine. Intermittent thin clouds will pass through above summit level. Brisk NW winds will be blowing at summit level, otherwise winds will remain light. At 2000 m: 4 degrees; at 3000 m, -2 degrees.

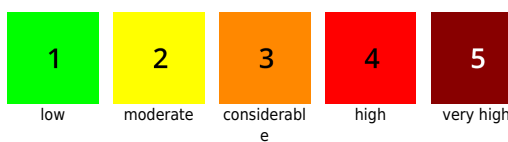
Outlook

Heed the daytime danger cycle.

Avalanche problems



Danger ratings

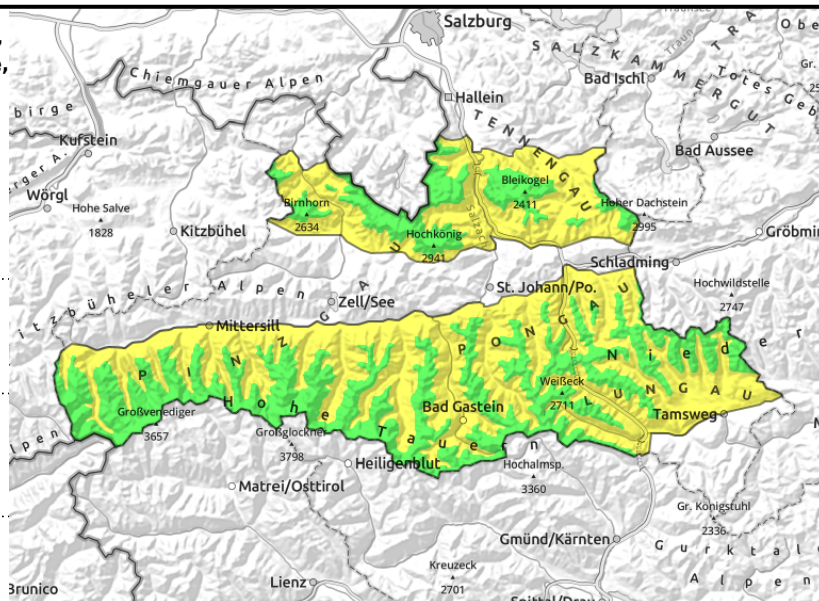


Expositions



29.03.2021, afternoon

Loferer und Leoganger Steinberge, Steinernes Meer, Hochkönig, Hagengebirge, Göllstock, Tennengebirge, Gosaukamm, Großvenedigergruppe Nord, Großvenedigergruppe Alpenhauptkamm, Glocknergruppe Nord, Glocknergruppe Alpenhauptkamm, Goldberggruppe Nord, Goldberggruppe Alpenhauptkamm, Niedere Tauern Alpenhauptkamm, Ankogelgruppe, Muhr, Niedere Tauern Süd, Niedere Tauern Nord



Daytime cycle of naturally triggered avalanche activity

triggerable in few spots in outlying terrain

Slight danger cycle due to daytime warmth

In the morning, favourable conditions. In the afternoon, small-to-medium wet-snow avalanches in sunny extremely steep terrain are possible. These can also be triggered by winter sports enthusiasts. In isolated cases, small glide-snow avalanches.

A slab can in isolated cases trigger in steep shady terrain above 2300 m.

Snowpack structure

The snowpack has settled well and is stable. All types of snow can be found on the snowpack surface, depending on aspect, altitude and time of day: old powder, firn, corn snow, interspersed by all kinds of crusts) During the day there is a crust capable of bearing loads which turns to firn snow.

Weather

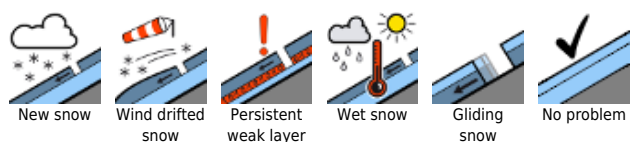
On Monday, good visibility, sunshine. Intermittent thin clouds will pass through above summit level. Brisk NW winds will be blowing at summit level, otherwise winds will remain light. At 2000 m: 4 degrees; at 3000 m, -2 degrees.

Outlook

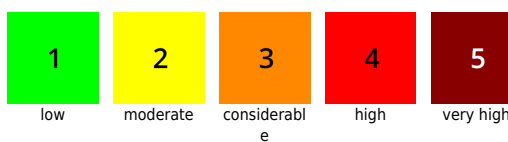
Heed the daytime danger cycle.

Translated by Jeffrey McCabe, www.creativtrans.com

Avalanche problems



Danger ratings



Expositions

